

United States Department of the Interior  
National Park Service

National Register of Historic Places  
Registration Form

1170



This form is for use in nominating or requesting determinations for individual properties and districts. See instructions in *How to Complete the National Register of Historic Places registration Form* (National Register Bulletin 16A). Complete each item by marking "x" in the appropriate box or by entering the information requested. If an item does not apply to the property being documented, enter "N/A" for "not applicable." For functions, architectural classification, materials, and areas of significance, enter only categories and subcategories from the instructions. Place additional entries and narrative items on continuation sheets (NPS Form 10-900a). Use a typewriter, word processor, or computer, to complete all items.

1. Name of Property

historic name East Stone Arch Bridge - Lake Wabaunsee

other names/site number 197-0000-0153

2. Location

street & number East Flint Hills Drive .9 miles south of K-4 (Lake Wabaunsee)  not for publication

city or town Eskridge  vicinity

state Kansas code KS county Wabaunsee code 197 zip code 66423

3. State/Federal Agency Certification

As the designated authority under the National Historic Preservation Act, as amended, I hereby certify that this  nomination  request for determination of eligibility meets the documentation standards for registering properties in the National Register of Historic Places and meets the procedural and professional requirements set for in 36 CFR Part 60. In my opinion, the property  meets  does not meet the National Register criteria. I recommend that this property be considered significant  nationally  statewide  locally. (See continuation sheet for additional comments.)

*Natalie Selman*  
Signature of certifying official/Title

11-18-09  
Date

State Historic Preservation Office, Kansas Historical Society  
State or Federal agency and bureau

In my opinion, the property  meets  does not meet the National Register criteria. ( See Continuation sheet for additional comments.)

Signature of certifying official/Title

Date

State or Federal agency and bureau

4. National Park Service Certification

I hereby certify that the property is:

entered in the National Register.  
 See continuation sheet

determined eligible for the National Register.  
 See continuation sheet

determined not eligible for the National Register

removed from the National Register.

other,

(explain:)

*Love*  
Signature of the Keeper

*Edson K. Beall*

Date of Action

12-30-09

**5. Classification**

**Ownership of Property**  
(Check as many boxes as apply)

**Category of Property**  
(Check only one box)

**Number of Resources within Property**  
(Do not include previously listed resources in count)

- private
- public-local
- public-State
- public-Federal

- building(s)
- district
- site
- structure
- object

Contributing

Noncontributing

_____	buildings
_____	sites
_____ 1 _____	structures
_____	objects
_____ 1 _____	Total

**Name of related multiple property listing**  
(Enter "N/A" if property is not part of a multiple property listing.)

**Number of Contributing resources previously listed in the National Register**

Masonry Arch Bridges of KS MPS; New Deal-era Resources of KS MPS

0

**6. Function or Use**

**Historic Functions**  
(Enter categories from instructions)

**Current Functions**  
(Enter categories from instructions)

Transportation: Road Related (Vehicular)

Transportation: Road Related (Vehicular)

**7. Description**

**Architectural Classification**  
(Enter categories from instructions)

**Materials**  
(Enter categories from instructions)

Other: Works Progress Administration (WPA) - Three-Arch Stone Bridge

foundation Stone: Limestone

walls Stone: Limestone

roof

other

**Narrative Description**

(Describe the historic and current condition of the property on one or more continuation sheets.)

United States Department of the Interior  
National Park Service

National Register of Historic Places  
Continuation Sheet

East Stone Arch Bridge – Lake Wabaunsee  
Wabaunsee County, Kansas

Section number   7   Page   1  

Masonry Arch Bridges of KS / New Deal-era Resources of KS

---

## PROPERTY DESCRIPTION

### *Summary*

The East Stone Arch Bridge at Lake Wabaunsee (1937-1938) is located .9 miles south of Highway K-4/99 along East Flint Hills Drive, an asphalt roadway that encircles Lake Wabaunsee. The lake is located 4.4 miles west of Eskridge, Kansas, and 14.6 miles southeast of Alma, the Wabaunsee County seat. K-4/99 is on the Kansas Native Stone Scenic Byway.

### *Elaboration*

The bridge was completed in 1938 as part of a Works Progress Administration (WPA) job, but there is no signifying marker or keystone on the bridge. The bridge spans a waterway formed by springs and watershed runoff. Due to the washing-out of the lake and lake silt problems, the Conservation District built containment ponds. There is a containment pond is 9,000 feet from the bridge.

The bridge roadway is asphalt with a compacted earth subsurface measuring twenty-four feet across. A compacted surface of three feet (width from asphalt edge to bridge sidewall) parallels the asphalt roadway's edge along the entire length of the bridge.

The bridge measures thirty feet in length from north to south, with a deck width (curb-to-curb) measurement of thirty feet. The bridge has approaches on the north and south of eleven feet each. The bridge spans the waterway with three stone arches measuring seven feet in width. The materials of the settings of the arches, as well as underground components, are unknown. The vertical stone face extends thirteen feet from the water's surface and extends six feet above each arch, creating a bridge rail the length of the bridge extending four feet above the roadway. Stepped down from both ends of each side rail or sidewall are slightly angled wingwalls built into the roadside embankment. These wingwalls protect the structure from erosion during high water flows.

The structure consists of native limestone blocks and mortar joints. The limestone blocks, which were quarried from the lakebed and adjoining pastures, are rectangular and feature a rusticated face and many retain the tool markings from when they were quarried. The bridge was designed and constructed in the Roman-arch style, which relies on the compression of the stones for structural strength. The compact fill within the structure provides distribution of both live and dead loads among the arches.

As part of a larger lake development project, the bridge and roadway were built jointly by Wabaunsee County, the City of Eskridge, the WPA, and an association of future residents.

**United States Department of the Interior**  
National Park Service

**National Register of Historic Places**  
**Continuation Sheet**

East Stone Arch Bridge – Lake Wabaunsee  
Wabaunsee County, Kansas

Section number   7   Page   2  

Masonry Arch Bridges of KS / New Deal-era Resources of KS

---

The bridge has natural ground disturbing activity that involves the creek's hydrodynamics and distribution of a raft at the east face and two southern arches footings. The raft interrupts flow; thereby creating eddies that have weakened and washed out a portion of the arch support over time. While showing some deterioration from erosion of the limestone (especially at water level), the bridge has remained in use for public vehicular and pedestrian traffic since completion in 1938.

The East Bridge is located at approximate UTM coordinates 14R 744684E 4305205N—approximate latitude, longitude 38°51'42" N, 96°10'48" W

**8. Statement of Significance**

**Applicable National Register Criteria**

(Mark "x" in one or more boxes for the criteria qualifying the property for National Register listing.)

- A** Property is associated with events that have made a significant contribution to the broad patterns of our history.
- B** Property is associated with the lives of persons significant in our past.
- C** Property embodies the distinctive characteristics of a type, period, or method of construction or represents the work of a master, or possesses high artistic values, or represents a significant and distinguishable entity whose components lack individual distinction.
- D** Property has yielded, or is likely to yield, information important in prehistory or history.

**Criteria Considerations** N/A

(Mark "x" in all boxes that apply.)

Property is:

- A** owned by a religious institution or used for religious purposes.
- B** removed from its original location.
- C** a birthplace or grave
- D** a cemetery.
- E** a reconstructed building, object, or structure.
- F** a commemorative property
- G** less than 50 years of age or achieved significance within the past 50 years.

**Areas of Significance**

(Enter categories from instructions)

- Social History \_\_\_\_\_
- Government \_\_\_\_\_
- Architecture \_\_\_\_\_
- \_\_\_\_\_
- \_\_\_\_\_
- \_\_\_\_\_

**Period of Significance**

1937-1938  
 \_\_\_\_\_  
 \_\_\_\_\_

**Significant Dates**

1937-1938  
 \_\_\_\_\_  
 \_\_\_\_\_

**Significant Person**

(complete if Criterion B is marked)

N/A  
 \_\_\_\_\_

**Cultural Affiliation**

N/A  
 \_\_\_\_\_  
 \_\_\_\_\_

**Architect/Builder**

John Brink, WPA Engineer  
 \_\_\_\_\_  
 \_\_\_\_\_

**Narrative Statement of Significance**

(Explain the significance of the property on one or more continuation sheets.)

**9. Major Bibliographical References**

**Bibliography**

(Cite the books, articles, and other sources used in preparing this form on one or more continuation sheets.)

**Previous documentation on file (NPS):** N/A

- preliminary determination of individual listing (36 CFR 67) has been requested
- previously listed in the National Register
- Previously determined eligible by the National Register
- designated a National Historic Landmark
- recorded by Historic American Buildings Survey # \_\_\_\_\_
- recorded by Historic American Engineering Record # \_\_\_\_\_

**Primary location of additional data:**

- State Historic Preservation Office
- Other State Agency
- Federal Agency
- Local Government
- University
- Other

Name of repository:

Wabaunsee County Government  
 \_\_\_\_\_

United States Department of the Interior  
National Park Service

National Register of Historic Places  
Continuation Sheet

East Stone Arch Bridge – Lake Wabaunsee  
Wabaunsee County, Kansas  
Masonry Arch Bridges of KS / New Deal-era Resources of KS

Section number 8 Page 3

---

**STATEMENT OF SIGNIFICANCE**

The East Stone Arch Bridge at Lake Wabaunsee (1937-1938) is being nominated to the National Register of Historic Places under Criterion C for its engineering significance as limestone, three-arch bridge as part of the “Masonry Arch Bridges of Kansas” multiple property nomination.<sup>1</sup> The bridge is simple, yet functional in its triple-arch design. Its native limestone construction is typical of structures built in the area and uses local material abundant in the surrounding Flint Hills.

The bridge is also nominated under Criterion A as part of the “New Deal-era Resources of Kansas” multiple property nomination.<sup>2</sup> The bridge’s native stone construction is representative of the New Deal-era work projects in rural Kansas that the Federal Government undertook to provide employment during the economic depression of the 1930s. The construction of this bridge was the result of collaboration between all levels of government (the City of Eskridge, Wabaunsee County, the Kansas Emergency Relief Corporation, the federal Works Progress Administration), and an association of future residents.

The period of significance is 1937-1938, which includes the years the bridge was being constructed.

*Elaboration*<sup>3</sup>

Efforts to construct a water supply and recreation area near Eskridge began in the 1920s when businessmen, cattlemen, farmers, and sportsmen came together to propose the idea of a state lake in Wabaunsee County. During this same period, Kansas’ first state fishing lakes (Neosho and Meade) were opened (in 1926) for public fishing, boating, and swimming. There was much discussion among elected officials and local boosters, but a firm commitment was never finalized for a state lake in Wabaunsee County.

---

<sup>1</sup> For context relating to the masonry arch bridge construction in Kansas, see “Masonry Arch Bridges of Kansas” multiple property documentation form. Larry Jochims, “Masonry Arch Bridges of Kansas.” National Register Multiple Property Documentation Form. 1985. Filed at the Kansas State Historic Preservation Office. Available online at: [http://www.kshs.org/resource/national\\_register/mps.htm](http://www.kshs.org/resource/national_register/mps.htm)

<sup>2</sup> For context relating to the Kansas Emergency Relief Corporation, the Works Progress Administration, and the Great Depression years in Kansas, see “New Deal-era Resources of Kansas” multiple property documentation form. Elizabeth Rosin, et. al. “New Deal-era Resources of Kansas.” National Register Multiple Property Documentation Form. 2002. Filed at the Kansas State Historic Preservation Office. Available online at: [http://www.kshs.org/resource/national\\_register/mps.htm](http://www.kshs.org/resource/national_register/mps.htm)

<sup>3</sup> The history of Lake Wabaunsee is primarily taken from two sources: 1) A. V. (Pete) Lungren, A. V., “General History of Lake Wabaunsee.” Lake Wabaunsee Sportsmen Association, 1970. Dedicated to the Wabaunsee County Historical Society, Alma, KS. Available online at: [www.lakewabaunsee.com/Communities/History/GenHist.html](http://www.lakewabaunsee.com/Communities/History/GenHist.html) . 2) Greg A. Hoots *The Complete History of Lake Wabaunsee*. Alma, KS: Flint Hills Publishing, 2008.

United States Department of the Interior  
National Park Service

National Register of Historic Places  
Continuation Sheet

East Stone Arch Bridge – Lake Wabaunsee  
Wabaunsee County, Kansas

Section number 8 Page 4

Masonry Arch Bridges of KS / New Deal-era Resources of KS

By 1932 – as the economic depression was taking hold – local efforts to obtain funding for the construction of a lake intensified. In 1933, the Lake Wabaunsee Corporation obtained options to purchase nearly 500 acres and secured more than \$20,000 in pledges toward the purchase of a site. An application for assistance through the Civilian Conservation Corps was denied. The Kansas Emergency Relief Corporation (KERC) stepped in and agreed to establish a camp for workers, who did not qualify for CCC jobs, to build the lake. The camp was designed to accommodate some 400 workers.

Work at the lake site began under the auspices of KERC and continued until 1936, when the project was taken over by the WPA.<sup>4</sup> By the end of 1936, only about 15 percent of the project, which primarily included the quarrying of stone and the major earthwork, had been completed.

In early 1937, the Lake Wabaunsee Corporation still needed \$12,000 to clear the title to the site and pay expenses. The Kansas Forestry, Fish and Game Commission refused to take ownership of the property, as did the Wabaunsee County government. The City of Eskridge hosted a lottery selling 150 lots at \$100 each with the funds raised going into a special fund for the lake project. Ultimately, the bonds, principal, and interest (amounting to about \$20,000) were paid over ten years by a levy on property within the City of Eskridge.

As the lake began to fill with water in early 1938, work continued on the road encircling the lake. The construction of three stone arch bridges was underway.<sup>5</sup> John Brink, a WPA engineer, oversaw the construction of the bridges. The road and bridge project was undertaken to furnish residents and visitors a perimeter road around the newly constructed lake and dam.

Lake Wabaunsee's grand opening was held on August 26, 1939.

Today, lakefront houses dating from the middle and late 20<sup>th</sup> century line the perimeter. New Deal-era camp buildings are no longer extant and modern development prevents listing the entire lake site in the National Register. Both the East Bridge and Southeast Bridge remain an integral part of the historic road system encircling Lake Wabaunsee. The bridges are owned and maintained by Wabaunsee County. County Commissioners slated this bridge for replacement between now and

<sup>4</sup> The WPA project that included the construction of both the East and Southeast bridges at Lake Wabaunsee was project # is 465-82-2-65. It was superseded by WPA project # 65-1-82-61. The final project amount was \$48,682.70.

<sup>5</sup> The lake's south bridge was washed out by run-off in the 1950s and replaced with a steel and concrete structure. The stone abutments are all that remain of the original construction.

**United States Department of the Interior**  
National Park Service

**National Register of Historic Places**  
**Continuation Sheet**

East Stone Arch Bridge – Lake Wabaunsee  
Wabaunsee County, Kansas  
Masonry Arch Bridges of KS / New Deal-era Resources of KS

Section number   8   Page   5  

---

2012 under a KDOT five-year bridge plan; however, they are interested in researching was to save this bridge due to the preservation concerns of local and county citizens.



**United States Department of the Interior**  
National Park Service

**National Register of Historic Places**  
**Continuation Sheet**

East Stone Arch Bridge – Lake Wabaunsee  
Wabaunsee County, Kansas

Section number   9   Page   6  

Masonry Arch Bridges of KS / New Deal-era Resources of KS

---

**BIBLIOGRAPHY**

Hoots, Greg A. *The Complete History of Lake Wabaunsee*. Alma, KS: Flint Hills Publishing, 2008.

Jochims, Larry. "Masonry Arch Bridges of Kansas." National Register Multiple Property Documentation Form. 1985. Filed at the Kansas State Historic Preservation Office. Available online at: [http://www.kshs.org/resource/national\\_register/mps.htm](http://www.kshs.org/resource/national_register/mps.htm)

Rosin, Elizabeth, et. al. "New Deal-era Resources of Kansas." National Register Multiple Property Documentation Form. 2002. Filed at the Kansas State Historic Preservation Office. Available online at: [http://www.kshs.org/resource/national\\_register/mps.htm](http://www.kshs.org/resource/national_register/mps.htm)

Wabaunsee County Historical Society. *New Branches From Old Trees*. Alma, KS: Wabaunsee County Historical Society, ND.

Wabaunsee County Historical Society. *Stories of the Past: Third Edition of Wabaunsee County History*. Alma, KS: Wabaunsee County Signal Enterprise, 2000.

Works Progress Administration project rolls. Compiled by the National Archives and accessible via microfilm at the Kansas Historical Society's State Archives and Library.

East Stone Arch Bridge – Lake Wabaunsee  
Name of Property

Wabaunsee County, Kansas  
County and State

---

## 10. Geographical Data

---

**Acreage of Property** Less than one acre

### UTM References

(place additional UTM references on a continuation sheet.)

1 14 744770 4305090  
Zone Easting Northing  
2 \_\_\_\_\_

3 \_\_\_\_\_  
Zone Easting Northing  
4 \_\_\_\_\_

See continuation sheet

### Verbal Boundary Description

(Describe the boundaries of the property on a continuation sheet.)

### Boundary Justification

(Explain why the boundaries were selected on a continuation sheet.)

---

## 11. Form Prepared By

---

name/title Ron D. Martinek  
organization Lake Wabaunsee Arch Bridge Committee date \_\_\_\_\_  
street & number 258 Ponderosa telephone 785-449-2790  
city or town Alma state KS zip code 66401

---

## Additional Documentation

---

submit the following items with the completed form:

### Continuation Sheets

#### Maps

A **USGS map** (7.5 Or 15 minute series) indicating the property's location

A **Sketch map** for historic districts and properties having large acreage or numerous resources.

#### Photographs

Representative **black and white photographs** of the property.

#### Additional items

(Check with the SHPO) or FPO for any additional items

---

## Property Owner

---

(Complete this item at the request of SHPO or FPO.)

name Wabaunsee County, Kansas  
street & number 215 Kansas telephone 785-765-2406  
city or town Alma state KS zip code 66401

---

**Paperwork Reduction Act Statement:** This information is being collected for applications to the National Register of Historic Places to nominate properties for listing or determine eligibility for listing, to list properties, and to amend existing listing. Response to this request is required to obtain a benefit in accordance with the National Historic Preservation Act, as amended (16 U.S.C. 470 *et seq.*)

**Estimated Burden Statement:** Public reporting burden for this form is estimated to average 18.1 hours per response including time for reviewing instructions, gathering and maintaining data, and completing and reviewing the form. Direct comments regarding this burden estimate or any aspect of this form to the Chief, Administrative Services Division, National Park Service, P. O. Box 37127, Washington, DC 20013-7127; and the Office of Management and Budget, Paperwork Reductions Projects (1024-0018), Washington, DC 20303.

**United States Department of the Interior**  
National Park Service

**National Register of Historic Places**  
**Continuation Sheet**

East Stone Arch Bridge – Lake Wabaunsee  
Wabaunsee County, Kansas

Section number 10 & Photos Page 7

Masonry Arch Bridges of KS / New Deal-era Resources of KS

---

**VERBAL BOUNDARY DESCRIPTION**

The East Stone Arch Bridge at Lake Wabaunsee is located on East Flint Hills Drive .9 miles south of K-4 in the SW quarter of Section 3, Township 14S, Range 11E.

**BOUNDARY JUSTIFICATION**

The nominated property includes the bridge and the right-of-way, which totals less than one acre.

Property: East Stone Arch Bridge at Lake Wabaunsee  
Location: East Flint Hills Drive .9 miles south of K-4, Wabaunsee County  
Date: 18 September 2009  
Photographer: Sarah Martin, KSHS Staff

Location of Digital Negatives: Cultural Resources Division, Kansas State Historical Society

Photo 1: West elevation of bridge viewed from a distance, looking SE

Photo 2: View of bridge from roadway, looking NE

Photo 3: Looking west toward the lake, showing west wall along roadway

Photo 4: West elevation of bridge, looking S

UNITED STATES DEPARTMENT OF THE INTERIOR  
NATIONAL PARK SERVICE

NATIONAL REGISTER OF HISTORIC PLACES  
EVALUATION/RETURN SHEET

REQUESTED ACTION: NOMINATION

PROPERTY East Stone Arch Bridge - Lake Wabaunsee  
NAME:

MULTIPLE Masonry Arch Bridges of Kansas TR  
NAME:

STATE & COUNTY: KANSAS, Wabaunsee

DATE RECEIVED: 11/20/09 DATE OF PENDING LIST: 12/09/09  
DATE OF 16TH DAY: 12/24/09 DATE OF 45TH DAY: 1/03/10  
DATE OF WEEKLY LIST:

REFERENCE NUMBER: 09001170

REASONS FOR REVIEW:

APPEAL: N DATA PROBLEM: N LANDSCAPE: N LESS THAN 50 YEARS: N  
OTHER: N PDIL: N PERIOD: N PROGRAM UNAPPROVED: N  
REQUEST: N SAMPLE: N SLR DRAFT: N NATIONAL: N

COMMENT WAIVER: N

ACCEPT  RETURN  REJECT 12.30.09 DATE

ABSTRACT/SUMMARY COMMENTS:

**Entered in  
The National Register  
of  
Historic Places**

RECOM./CRITERIA \_\_\_\_\_

REVIEWER \_\_\_\_\_ DISCIPLINE \_\_\_\_\_

TELEPHONE \_\_\_\_\_ DATE \_\_\_\_\_

DOCUMENTATION see attached comments Y/N see attached SLR Y/N

If a nomination is returned to the nominating authority, the nomination is no longer under consideration by the NPS.

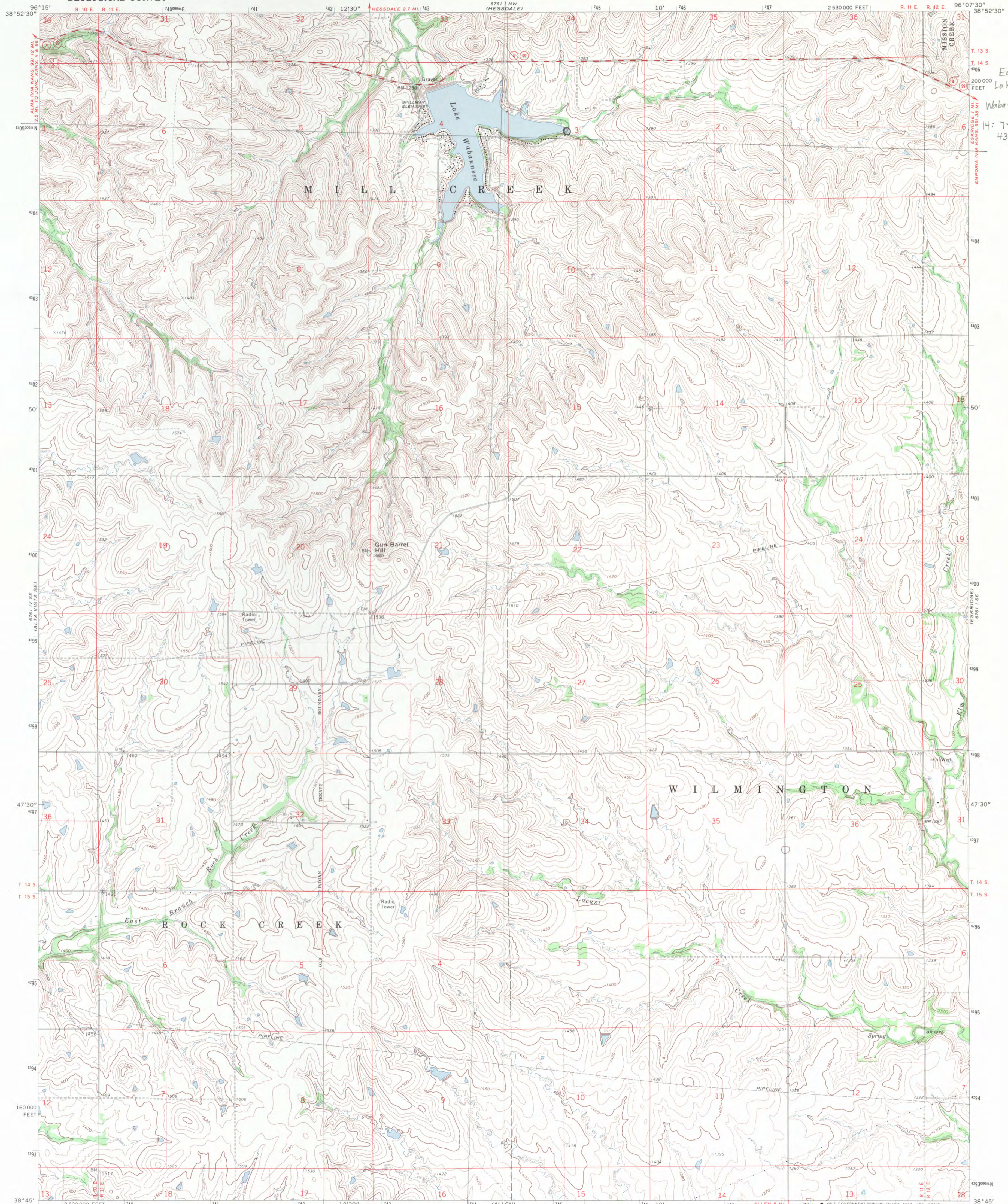






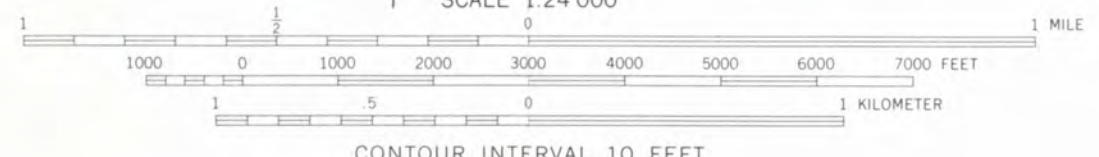




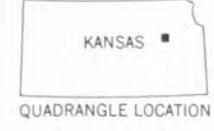


East Bridge -  
Lake Wabauunsee  
Wabauunsee Co., KS  
14: 74770 E  
4305090 N

Maped, edited, and published by the Geological Survey  
in cooperation with State of Kansas agencies  
Control by USGS and USC&GS  
Topography by photogrammetric methods from aerial  
photographs taken 1970. Field checked 1971  
Polyconic projection. 1927 North American datum  
10,000-foot grid based on Kansas coordinate system, north zone  
1000-meter Universal Transverse Mercator grid ticks,  
zone 14, shown in blue  
Fine red dashed lines indicate selected fence and field lines where  
generally visible on aerial photographs. This information is unchecked



CONTOUR INTERVAL 10 FEET  
DATUM IS MEAN SEA LEVEL



ROAD CLASSIFICATION

Primary highway, hard surface	Light-duty road, hard or unimproved surface
Secondary highway, hard surface	Unimproved road

○ Interstate Route   □ U. S. Route   ○ State Route

THIS MAP COMPLIES WITH NATIONAL MAP ACCURACY STANDARDS  
FOR SALE BY U. S. GEOLOGICAL SURVEY, DENVER, COLORADO 80225, OR WASHINGTON, D. C. 20242  
AND BY THE STATE GEOLOGICAL SURVEY, LAWRENCE, KANSAS 66044  
A FOLDER DESCRIBING TOPOGRAPHIC MAPS AND SYMBOLS IS AVAILABLE ON REQUEST

LAKE WABAUNSEE, KANS.  
N3845—W9607.5/7.5

1971

AMS 6761 I SW—SERIES V878

# KANSAS



Kansas Historical Society  
Cultural Resources Division

MARK PARKINSON, GOVERNOR

November 19, 2009

Dr. Janet Matthews  
National Register of Historic Places  
National Park Service  
1201 Eye Street, N. W.  
8<sup>th</sup> Floor (MS 2280)  
Washington, DC 20005

Dear Dr. Matthews:

Please find enclosed the following National Register nominations (all new submissions):

- Fairview Apartments – Wichita, Sedgwick Co., Kansas
- Fairmount Apartments – Wichita, Sedgwick Co., Kansas
- Independence Junior High School – Independence, Montgomery Co., Kansas
- Cossaart Barn – Republic Co., Kansas
- Transue Brothers Blacksmith & Wagon Shop – Summerfield, Marshall Co., Kansas
- Topeka Council of Colored Women's Clubs Building – Topeka, Shawnee Co., Kansas
- Southeast Stone Arch Bridge – Lake Wabaunsee – Wabaunsee Co., Kansas
- East Stone Arch Bridge – Lake Wabaunsee – Wabaunsee Co., Kansas

Do not hesitate to contact me if you have any questions. I may be reached at 785-272-8681 ext. 216 or [smartin@kshs.org](mailto:smartin@kshs.org).

Sincerely yours,

Sarah J. Martin  
National Register Coordinator

Enclosures