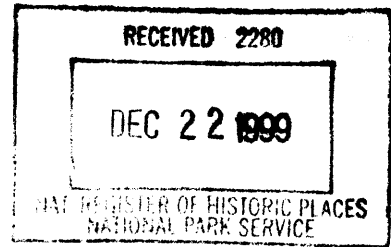


United States Department of the Interior  
National Park Service

1705



# National Register of Historic Places Registration Form

This form is for use in nominating or requesting determination for individual properties and districts. See instruction in *How to Complete the National Register of Historic Places Registration Form* (National Register Bulletin 16A). Complete each item by marking "x" in the appropriate box or by entering the information requested. If an item does not apply to the property being documented, enter "N/A" for "not applicable." For functions, architectural classification, materials and areas of significance, enter only categories and subcategories from the instructions. Place additional entries and narrative items on continuation sheets (NPS Form 10-900a). Use a typewriter, word processor, or computer, to complete all items.

### 1. Name of Property

historic name McGregor Hall

other names/site number 5EP3481

### 2. Location

street & number 930 North Cascade Avenue [N/A] not for publication

city or town Colorado Springs [N/A] vicinity

state Colorado code CO county El Paso code 041 zip code 80903

### 3. State/Federal Agency Certification

As the designated authority under the National Historic Preservation Act, as amended, I hereby certify that this [ x ] nomination [ ] request for determination of eligibility meets the documentation standards for registering properties in the National Register of Historic Places and meets the procedural and professional requirements set forth in 36 CFR Part 60. In my opinion, the property [ x ] meets [ ] does not meet the National Register criteria. I recommend that this property be considered significant [ ] nationally [ ] statewide [ x ] locally.  
( See continuation sheet for additional comments [ ]. )

Stephanie Cortez Signature of certifying official/Title 12/15/99 Date

State Historic Preservation Office, Colorado Historical Society  
State or Federal agency and bureau

In my opinion, the property [ ] meets [ ] does not meet the National Register criteria.  
( See continuation sheet for additional comments [ ]. )

\_\_\_\_\_  
Signature of certifying official/Title Date

\_\_\_\_\_  
State or Federal agency and bureau

### 4. National Park Service Certification

I hereby certify that the property is:

- entered in the National Register  
See continuation sheet [ ].
- determined eligible for the  
National Register  
See continuation sheet [ ].
- determined not eligible for the  
National Register.
- removed from the  
National Register
- other, explain  
See continuation sheet [ ].

Edson H. Beall Signature of the Keeper Date 1-27-00

McGregor Hall  
Name of Property

El Paso / Colorado  
County/State

**5. Classification**

**Ownership of Property**  
(Check as many boxes as apply)

- private
- public-local
- public-State
- public-Federal

**Category of Property**  
(Check only one box)

- building(s)
- district
- site
- structure
- object

**Number of Resources within Property**  
(Do not count previously listed resources.)

Contributing	Noncontributing	
1	0	buildings
0	0	sites
0	0	structures
0	0	objects
1	0	Total

**Name of related multiple property listing.**  
(Enter "N/A" if property is not part of a multiple property listing.)

Historic Resources of Colorado College,  
Colorado Springs, Colorado

**Number of contributing resources previously listed in the National Register.**

N/A

**6. Function or Use**

**Historic Function**

(Enter categories from instructions)

EDUCATION/education-related housing

---



---



---



---

**Current Functions**

(Enter categories from instructions)

EDUCATION/Education-related housing

---



---



---



---

**7. Description**

**Architectural Classification**

(Enter categories from instructions)

LATE 19TH AND EARLY 20TH CENTURY  
REVIVALS/Colonial Revival

---



---



---



---

**Materials**

(Enter categories from instructions)

foundation STONE/sandstone

walls STONE/sandstone

roof ASPHALT

other \_\_\_\_\_

**Narrative Description**

(Describe the historic and current condition of the property on one or more continuation sheets.)

### 8. Statement of Significance

#### Applicable National Register Criteria

(Mark "x" in one or more boxes for the criteria qualifying the property for National Register listing.)

**A** Property is associated with events that have made a significant contribution to the broad patterns of our history

**B** Property is associated with the lives of persons significant in our past.

**C** Property embodies the distinctive characteristics of a type, period, or method of construction or represents the work of a master, or possesses high artistic values, or represents a significant and distinguishable entity whose components lack individual distinction.

**D** Property has yielded, or is likely to yield, information important in prehistory or history.

#### Criteria Considerations

(Mark "x" in all the boxes that apply.)

Property is:

**A** owned by a religious institution or used for religious purposes.

**B** removed from its original location.

**C** a birthplace or grave.

**D** a cemetery.

**E** a reconstructed building, object, or structure.

**F** a commemorative property.

**G** less than 50 years of age or achieved significance within the past 50 years.

#### Areas of Significance

(Enter categories from instructions)

EDUCATION

ARCHITECTURE

#### Periods of Significance

1903-1949

#### Significant Dates

1903

#### Significant Person(s)

(Complete if Criterion B is marked above).

N/A

#### Cultural Affiliation

N/A

#### Architect/Builder

Douglas, Walter F. and  
Hetherington, T. Duncan (architects)  
Harmer, J.B. (builder)

### Narrative Statement of Significance

(Explain the significance of the property on one or more continuation sheets.)

### 9. Major Bibliographic References

#### Bibliography

(Cite the books, articles and other sources used in preparing this form on one or more continuation sheets.)

#### Previous documentation on file (NPS):

preliminary determination of individual listing (36 CFR 67) has been requested

previously listed in the National Register

previously determined eligible by the National Register

designated a National Historic Landmark

recorded by Historic American Buildings Survey

# \_\_\_\_\_

recorded by Historic American Engineering Record

# \_\_\_\_\_

#### Primary location of additional data:

State Historic Preservation Office

Other State Agency

Federal Agency

Local Government

University

Other:

Name of repository:

Special Collections Archives, Colorado College  
Library

McGregor Hall  
Name of Property

El Paso / Colorado  
County/State

## 10. Geographical Data

Acreage of Property Less than one acre

### UTM References

(Place additional UTM references on a continuation sheet.)

A. Zone 13	Easting 515040	Northing 4299800	B. Zone	Easting	Northing
C. Zone	Easting	Northing	D. Zone	Easting	Northing

[ ] See continuation sheet

### Verbal Boundary Description

(Describe the boundaries of the property on a continuation sheet.)

### Boundary Justification

(Explain why the boundaries were selected on a continuation sheet.)

## 11. Form Prepared By

name/title R. Laurie Simmons and Thomas H. Simmons, historians  
organization Front Range Research Associates, Inc. date 27 August 1999  
street & number 3635 W. 46th Ave. telephone (303) 477-7597  
city or town Denver state CO zip code 80211

### Additional Documentation

Submit the following items with the completed form:

### Continuation Sheets

### Maps

A USGS map (7.5 or 15 minute series) indicating the property's location.

A Sketch map for historic districts and properties having large acreage or numerous resources.

### Photographs

Representative black and white photographs of the property.

### Additional Items

(Check with the SHPO or FPO for any additional items)

### Property Owner

(Complete this item at the request of SHPO or FPO.)

name The Colorado College, c/o Office of the President  
street & number 14 E. Cache La Poudre telephone (719) 389-6700  
city or town Colorado Springs state CO zip code 80903

**Paperwork Reduction Act Statement:** This information is being collected for applications to the National Register of Historic Places to nominate properties for listing or determine eligibility for listing, to list properties, and to amend existing listings. Response to this request is required to obtain a benefit in accordance with the National Historic Preservation Act, as amended (16 U.S.C. 470 *et seq.*).

**Estimated Burden Statement:** Public reporting burden for this form is estimated to average 18.1 hours per response including time for reviewing instructions, gathering and maintaining data, and completing and reviewing the form. Direct comments regarding this burden estimate or any aspect of this form to the Chief, Administrative Services Division, National Park Service, P.O. Box 37127, Washington, DC 20013-7127; and the Office of Management and Budget, Paperwork Reductions Projects (1024-0018), Washington, DC 20503.

United States Department of the Interior  
National Park Service

## National Register of Historic Places Continuation Sheet

Section number 7 Page 1

McGregor Hall, El Paso County, Colorado  
(Historic Resources of Colorado College MPS)

### Description

McGregor Hall is a collegiate dormitory on the Colorado College campus which meets the registration requirements specified in the Multiple Property Documentation form "Historic Resources of Colorado College, Colorado Springs, Colorado." McGregor Hall is associated with the growth of the college during the administration of President William F. Slocum during the early twentieth century, the expansion in the number of women enrolled at the college and the development of physical education programs for women during that era, and with the Woman's Educational Society of Colorado College. The building is associated with the historic context "The Growth of Colorado College During President Slocum's Administration and the Impact of Cripple Creek Prosperity, 1888-1917." The building is significant as representative of the Dutch Colonial Revival style adapted to collegiate buildings, and is also notable for its construction of Colorado sandstone and its design by the architectural firm of Douglas and Hetherington. The property type represented is Residential and Social Collegiate Buildings. The building exhibits a high degree of historic integrity and is in good condition.

McGregor Hall is located on the western edge of a small landscaped open space, historically known as the Women's Quadrangle, around which women's residential buildings were erected at Colorado College during the late nineteenth and early twentieth centuries. The 1891 Montgomery Hall lies across the quadrangle to the northeast, while the 1898 Ticknor Hall is situated to the east. Bemis Hall, a women's dormitory erected in 1908, forms the southern boundary of the quadrangle. McGregor Hall is a massive, three-and-a-half-story, rectangular, red sandstone and dark brown frame building with raised basement level (Photograph 1). The building has a side gambrel roof with eave return and plain trim boards, a third-story shed roofed dormer on the front, a center front gable ornamented with shingles and stucco and half-timbering, and projecting eaves which shelter the lower stories on the front and rear. The basement level and first two stories of the building are composed of rock-faced, Greenlee red arkosic sandstone laid in random ashlar with protruding mortar, while the upper two stories are frame, with walls clad with coursed wood shingles. At the corners of the building are stone quoins, and the foundation is also stone. Windows have very wide stone lintels and narrower stone sills. The land behind the building drops away sharply, descending to the college athletic fields, and providing an unobstructed view of Pike's Peak in the distance and the surrounding landscape below the bluff.

The basically symmetrical front (east) of the dormitory features a central, one-story hipped roof porch with wood column supports atop a solid stone balustrade (Photograph 1). Stone podia flank the stone steps leading to the wood porch floor. Facing the porch is a center entrance with a door with a light with diamond panes flanked by glazed sidelights. A stone plaque adjacent to the entrance is inscribed "McGregor Hall." The south side of the porch has stairs leading to a basement level entrance. Windows on either side of the porch are one-over-one-light double-hung

United States Department of the Interior  
National Park Service

## National Register of Historic Places Continuation Sheet

McGregor Hall, El Paso County, Colorado  
(Historic Resources of Colorado College MPS)

Section number 7 Page 2

---

sash, principally arranged in groups of two. Basement windows are aligned below those of the first story. A cornerstone at the northeast corner is inscribed "1903."

The second and third story windows of the front of the building are aligned with the first story windows. Above the porch on the second and third stories are three evenly spaced windows which are sheltered by the gable eaves. The face of the gable is ornamented with stucco and half-timbering and has a single double-hung sash window at the apex. On each side of the gable is a narrow eyebrow dormer. There is a small, center brick chimney north of the gable.

The symmetrical north wall has three evenly spaced double-hung sash windows on the first story (Photograph 2). There are two above-ground basement level windows (one is boarded up and one has a security grille). The second story has a center entrance with nonhistoric door facing a metal fire escape and flanked by double-hung sash windows. The gambrel face is clad with coursed shingles. The third story has a center entrance with flush panel door which faces the fire escape and is flanked by double-hung sash windows. The windows have frame surrounds with lintels with drip caps. Near the apex of the gambrel is a door with rectangular light and adjacent to a double-hung sash window with shared lintel with drip cap which faces the fire escape.

The rear (west) of the building has a center entrance to the basement level sheltered by a hipped roof porch which has column supports atop a stone base and a modern metal balustrade (Photograph 3). A stairway leads to a modern metal door. The fenestration of the rear wall lacks symmetry. Above-ground basement level windows on either side of the porch are aligned with windows of the upper stories and are two-over-two-light double-hung sash. The first and second stories of the building have stepped windows above the porch. The seven bays of the rear wall are divided into groups of two windows and single windows. A shed roofed dormer projects above the second story, which is broken by a central through-the-cornice window. The third story is frame, clad with wood shingles, and has one-over-one-light double-hung sash windows with wood surrounds. The windows of the third story are aligned with those of the second. A series of five shed roof, shingled dormers on the west roof slope have double-hung sash windows (Photograph 4). Toward the north end of the building is a large dormer with a central section which projects further forward than its flanking sections.

The south wall of the building is almost identical to the north, with the exception of the basement level windows which are rectangular two-over-two-light double-hung sash (Photograph 5). In addition, the door and window at the apex of the gable share a plain wood surround. A stone wall extends from the southeast corner of the building.

United States Department of the Interior  
National Park Service

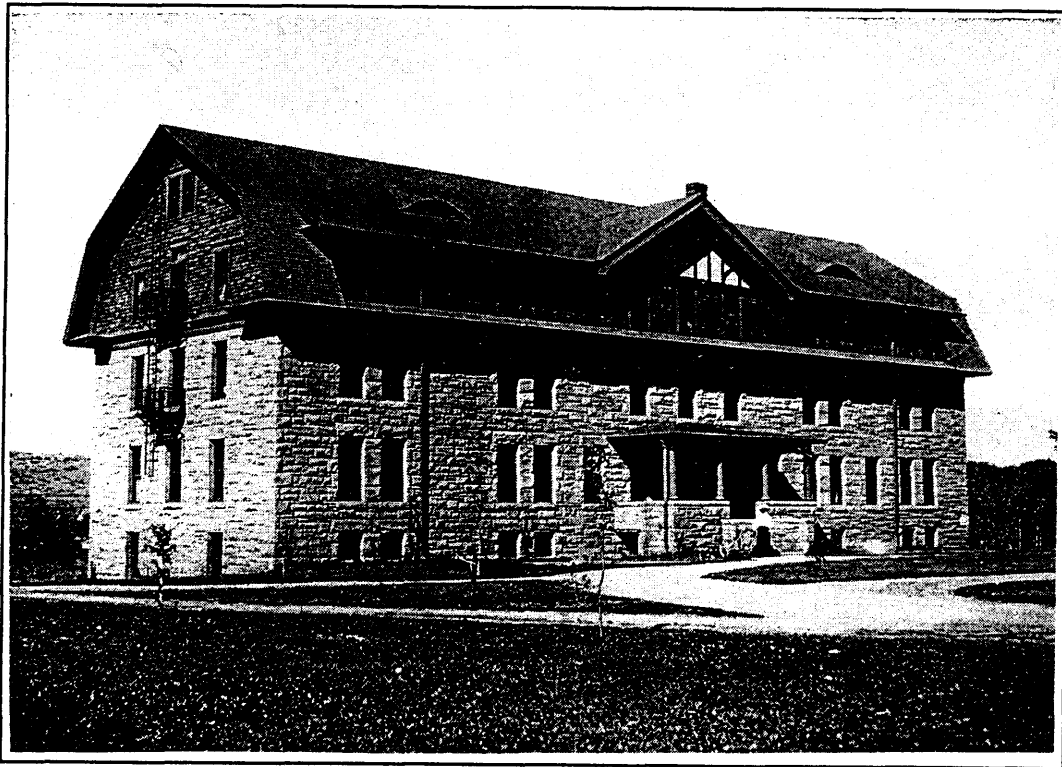
## National Register of Historic Places Continuation Sheet

Section number 7 Page 3

McGregor Hall, El Paso County, Colorado  
(Historic Resources of Colorado College MPS)

### Alterations

Doors have been added at the gambrel apexes on the north and south, and modern fire escapes have replaced those originally included on the building. Doors facing the fire escapes are modern, as is the front door to the hall. Some basement level windows on the west are covered with plywood or security grilles. Some windows of the third story on the west have security bars on the lower sashes. At an unknown date, the roof of the porch was extended to the north and south (possibly to shelter a basement entrance on the south). The wall outside the building at the southeast corner is an addition. The interior of the building has been extensively altered.



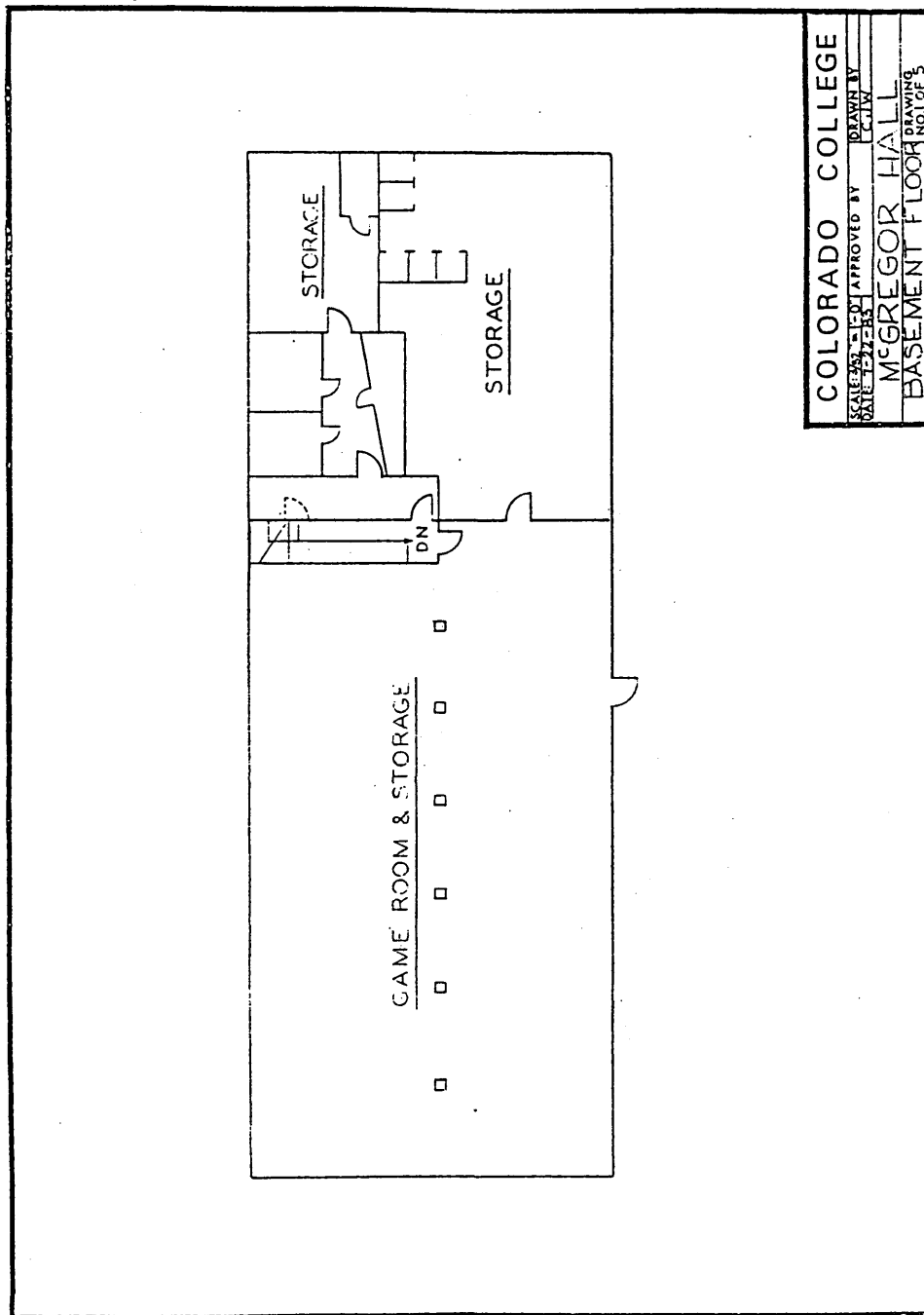
The front (east) and south sides of McGregor Hall is shown in this undated historic photograph (view northwest). SOURCE: Special Collections and Archives, The Colorado College Library.

United States Department of the Interior  
National Park Service

**National Register of Historic Places  
Continuation Sheet**

McGregor Hall, El Paso County, Colorado  
(Historic Resources of Colorado College MPS)

Section number 7 Page 4



McGregor Hall, Basement, 1983. SOURCE: Facilities Services, The Colorado College.

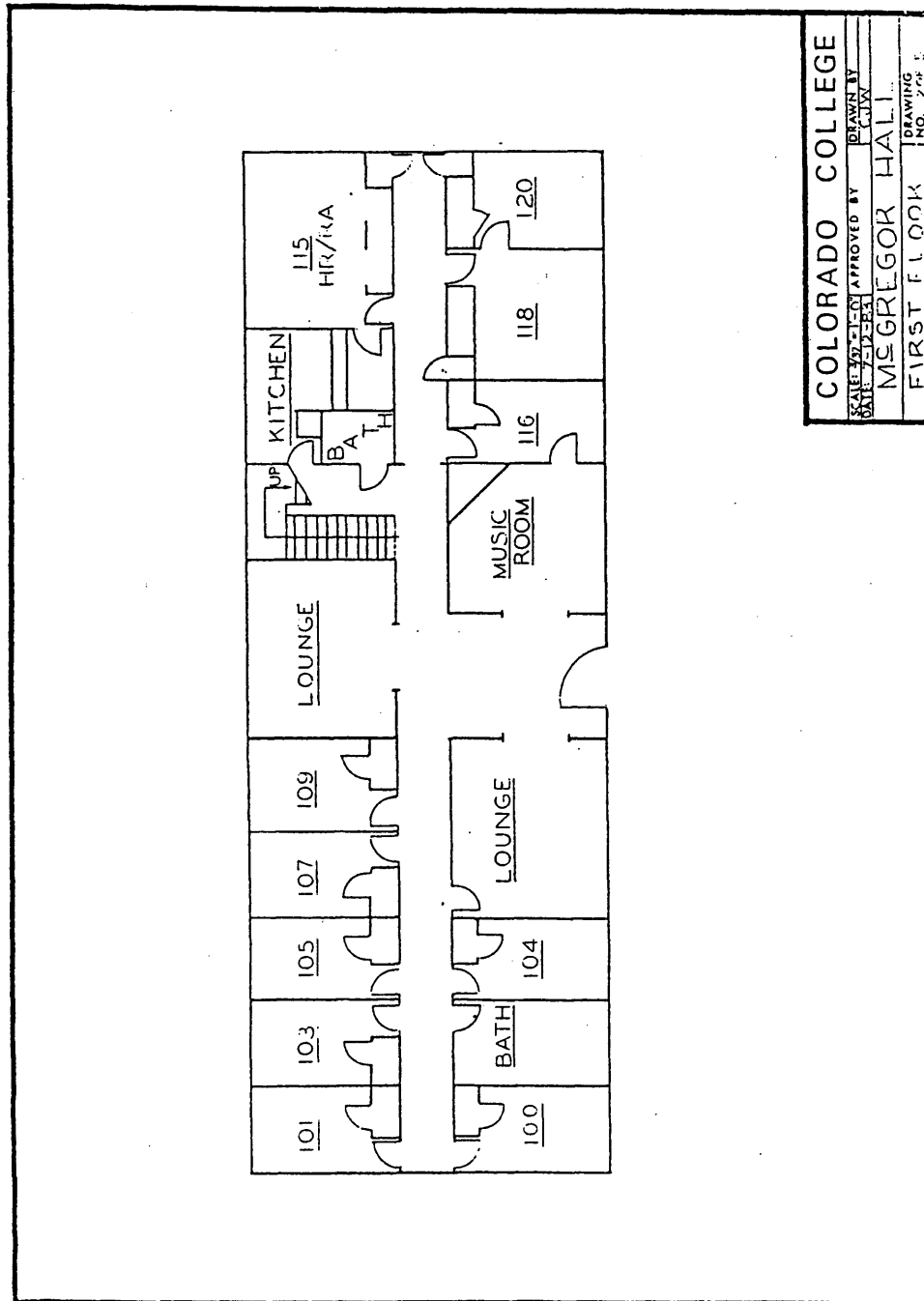


United States Department of the Interior  
National Park Service

### National Register of Historic Places Continuation Sheet

McGregor Hall, El Paso County, Colorado  
(Historic Resources of Colorado College MPS)

Section number 7 Page 5



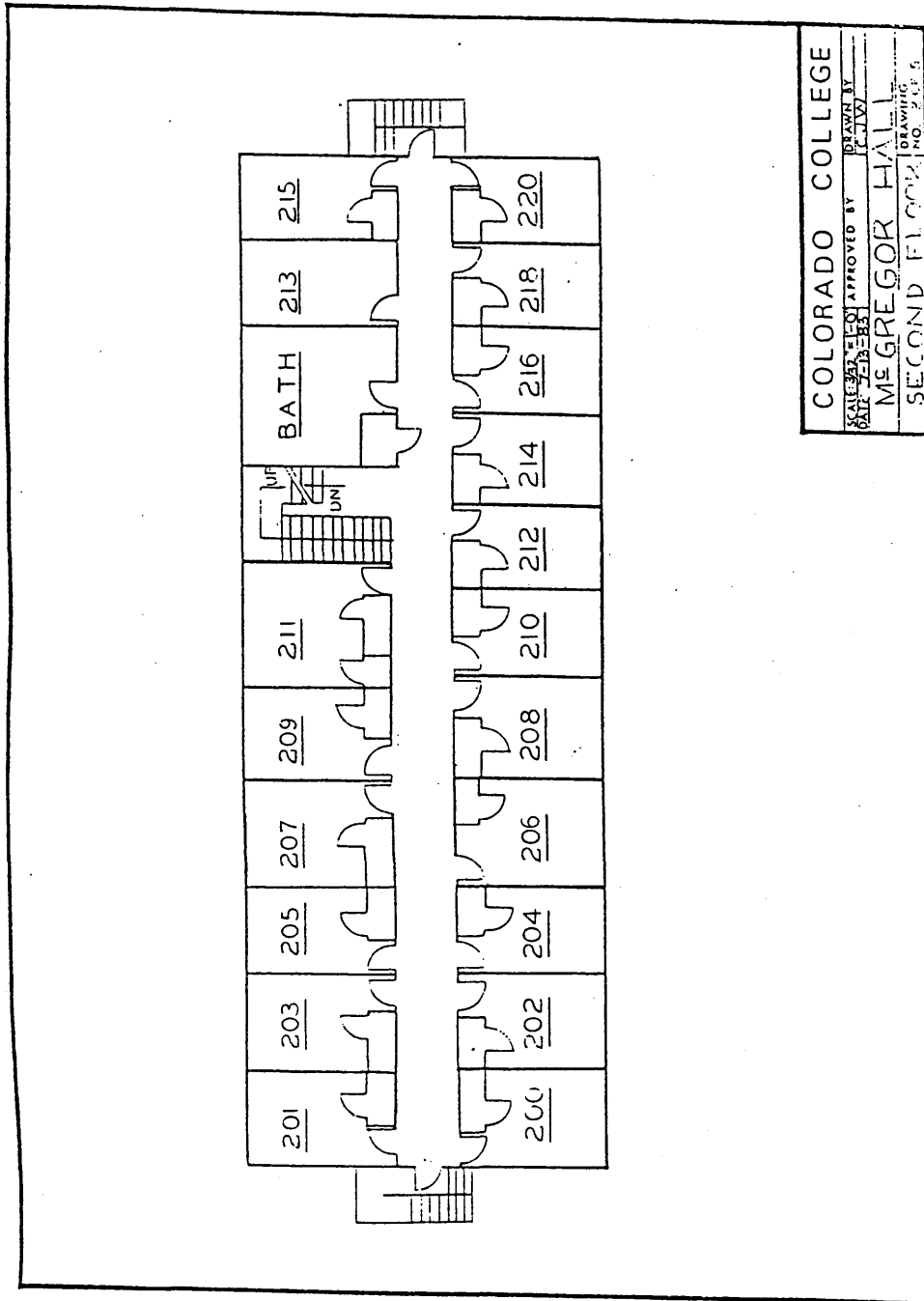
McGregor Hall, First Floor, 1983. SOURCE: Facilities Services, The Colorado College.

United States Department of the Interior  
National Park Service

### National Register of Historic Places Continuation Sheet

Section number 7 Page 6

McGregor Hall, El Paso County, Colorado  
(Historic Resources of Colorado College MPS)



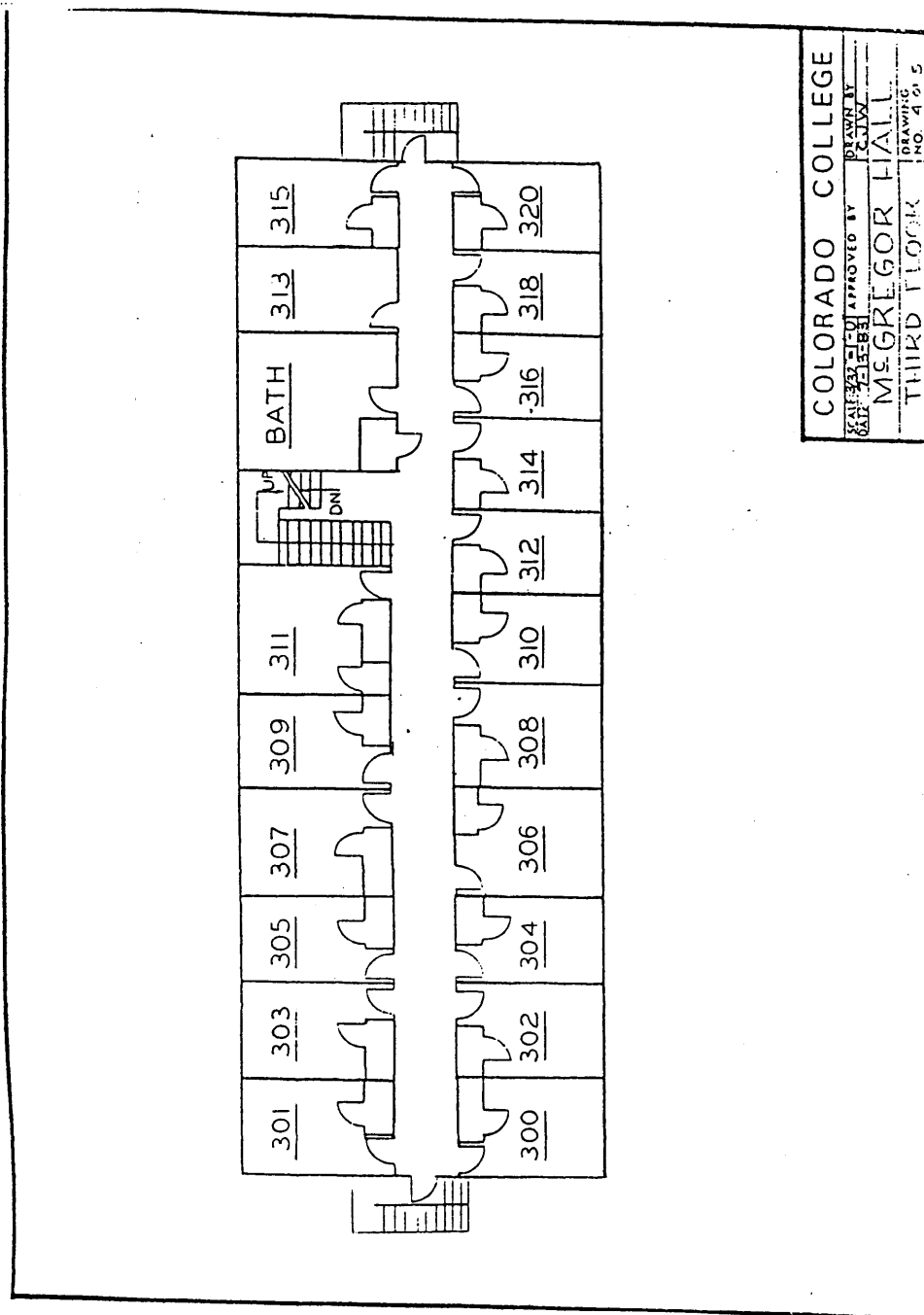
McGregor Hall, Second Floor, 1983. SOURCE: Facilities Services, The Colorado College.

United States Department of the Interior  
National Park Service

**National Register of Historic Places  
Continuation Sheet**

Section number 7 Page 7

McGregor Hall, El Paso County, Colorado  
(Historic Resources of Colorado College MPS)



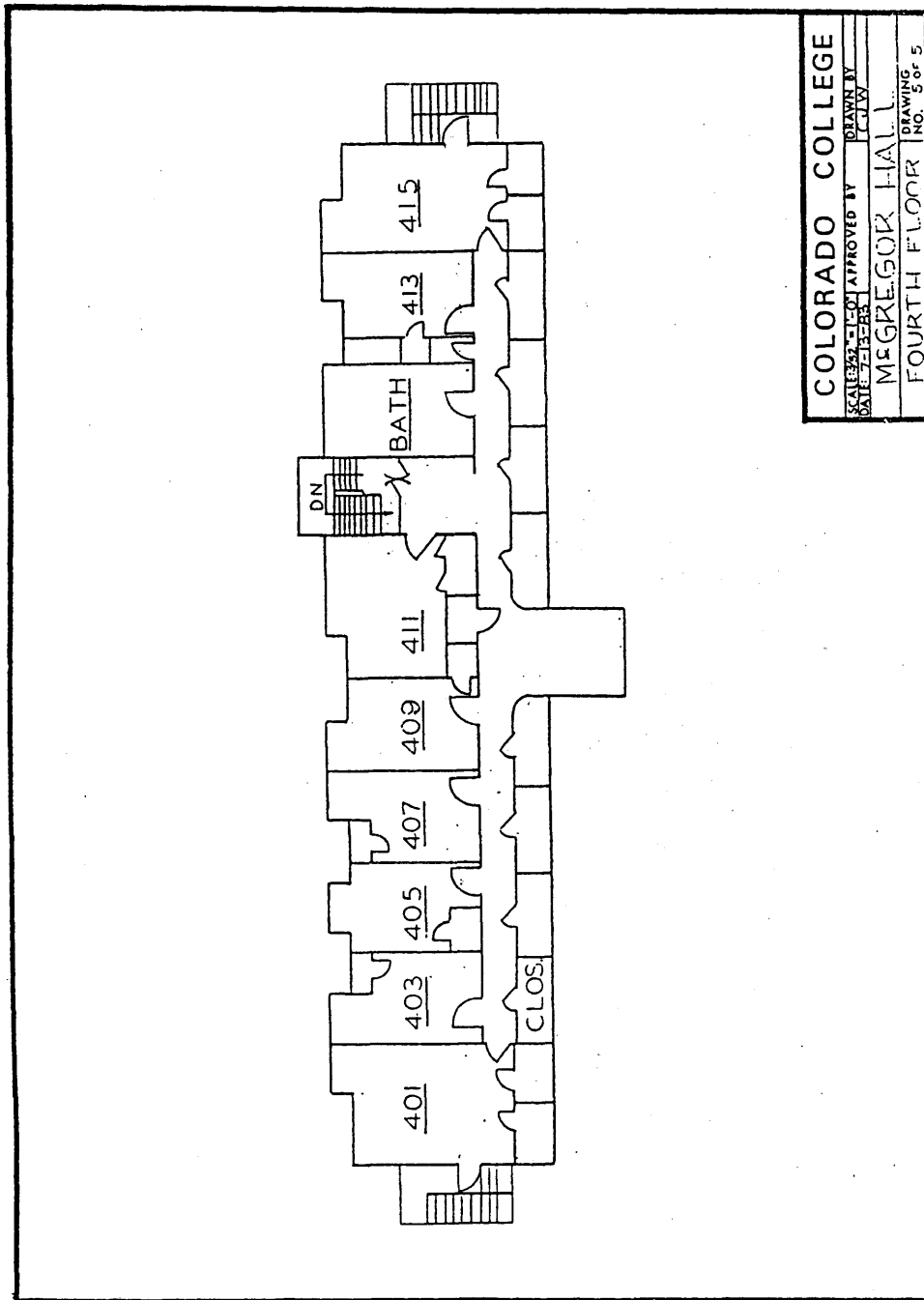
McGregor Hall, Third Floor, 1983. SOURCE: Facilities Services, The Colorado College.

United States Department of the Interior  
National Park Service

### National Register of Historic Places Continuation Sheet

McGregor Hall, El Paso County, Colorado  
(Historic Resources of Colorado College MPS)

Section number 7 Page 8



McGregor Hall, Fourth Floor, 1983. SOURCE: Facilities Services, The Colorado College.

United States Department of the Interior  
National Park Service

## National Register of Historic Places Continuation Sheet

McGregor Hall, El Paso County, Colorado  
(Historic Resources of Colorado College MPS)

Section number 8 Page 9

---

### Statement of Significance

McGregor Hall is significant under Criterion A, for its association with the growth of Colorado College during the administration of President William F. Slocum. The building is also significant for its association with the history of residential housing on the campus, having been erected as the college's third women's dormitory in 1903. Not only does the building represent the growth in the number of women students at the college during the early twentieth century, it is also associated with the development of programs relating to the education of women. As well as providing a residence for women, the building housed the first women's athletic facility on the campus and was the location of the women's physical education department after its completion. The building is further significant for its association with the Woman's Educational Society, a Colorado College organization founded to assist women students. The Society provided guidance in the design and construction of the dormitory and raised funds for its interior decoration and furnishing.

The building is also significant under Criterion C, for its architecture, which represents early twentieth century collegiate dormitory design with Dutch Colonial Revival style elements. The building's stone and shingled walls, eyebrow dormers, stucco and half-timbering, evenly spaced windows, and porch with column supports were elements found in varied combinations on the other residential buildings of the college and were influenced by residential architecture of the late Victorian era and by the other campus buildings. McGregor Hall is a significant element of the designed landscape of the campus, serving as the western boundary of the open space historically known as the "Women's Quadrangle. The building is notable for its construction of Colorado Springs red sandstone. The building is also significant as representative of the work of the Colorado Springs architectural firm of Douglas and Hetherington, which designed two other women's residences at Colorado College (Montgomery and Ticknor), as well as local public buildings and houses of numerous prominent citizens of Colorado Springs. Montgomery Hall, completed in 1891, was designed by Walter Douglas and constructed of the same Castle Rock ignimbrite as the college's first building, Cutler Hall. In contrast, Ticknor Hall's design featured Manitou Springs red and green dolostone, stucco, and half-timbering. Douglas and Hetherington were among the leading architects in the city during the early twentieth century. The Period of Significance for the building, 1903-1949, begins with the date of completion of the dormitory and extends through the historic period of its use by the college. The year 1949 was selected as the closing date for the Period of Significance because the building's use by the college continues today, and no more specific date appropriately ends the historic period.

Colorado College erected two residential halls for women during the 1890s, Montgomery (1891) and Ticknor (1898). In the early 1900s, the number of women students attending the college increased steadily, taxing the institution's existing housing facilities. The west wing of the nearby

United States Department of the Interior  
National Park Service

## National Register of Historic Places Continuation Sheet

Section number 8 Page 10

McGregor Hall, El Paso County, Colorado  
(Historic Resources of Colorado College MPS)

Plaza Hotel (then referred to as "South Hall") and nearby private residences were rented to provide additional space. In 1902, **Facts** reported that "on every side the College is pressed for room." When the lease on the hotel wing expired, the college decided to erect a third women's dormitory, with the understanding that room rental fees could be used to help pay for the project. The use of college funds for the construction was viewed as an investment. In launching the endeavor, President William Slocum requested that the institution's Woman's Educational Society provide suggestions and support for the development plan.<sup>1</sup>

The Woman's Educational Society had been founded at Colorado College in April 1889 under the leadership of Mrs. William Slocum to provide "physical, intellectual, and spiritual aid to young women" students. The first project the group undertook was to raise funds for the construction of the first women's residence hall on the campus, Montgomery Hall. The organization also obtained donations for the furnishing and decoration of Ticknor Hall, and was involved in the planning and design of that building. After hearing President Slocum's appeal for support, the group decided to solicit funds for the furnishing and decoration of the new building. The Society also provided guidance in the design and construction of the building, insuring that it had a home-like atmosphere appropriate for young women.<sup>2</sup>

The site of the new building was west of Montgomery and Ticknor halls, and its erection established the western boundary of the open space which came to be known as the "Women's Quadrangle." The location was described as "high land overlooking the College park with an unbroken view to [the] west and south of [the] Pike's Peak range and Cheyenne mountain." The three-story building was erected of Greenlee red arkosic sandstone from the Red Rock Canyon Quarry near Colorado Springs. J.B. Harmer was hired to build the new women's dormitory at a cost of about \$23,000. Subcontractors included Frazer and Richardson, who performed the masonry on the building, and St. John and Barnes, who handled the plumbing and heating.<sup>3</sup>

The Colorado Springs firm of Douglas & Hetherington, who also worked on Montgomery and Ticknor halls, were the architects. Walter F. Douglas and T. Duncan Hetherington established one of the most prominent partnerships in the city. Both men received their architectural training in Scotland. Hetherington came to the United States at the age of twenty-three and settled in

---

<sup>1</sup>J. Juan Reid, **Colorado College: The First Century, 1874-1974**. (Colorado Springs: The Colorado College, 1979), 142; Colorado Springs **Facts** 23 August 1902, 24.

<sup>2</sup>Reid, 39 and 49; Robert D. Loevy, **Colorado College: A Place of Learning, 1874-1999** (Colorado Springs: The Colorado College, 1999), 100. The group continued to support the college in subsequent years, through such projects as the purchase and equipping of a building to serve as a student health center, establishing a women's scholarship program, and raising funds for the remodeling of college facilities.

<sup>3</sup>**Colorado Springs Gazette**, 24 March 1903, 5; Colorado College, Tutt Library, Special Collections and Archives, Clipping Files, McGregor Hall; Bruce M. Loeffler, Professor of Geology, to Elaine Freed, 14 October 1996.

United States Department of the Interior  
National Park Service

## National Register of Historic Places Continuation Sheet

McGregor Hall, El Paso County, Colorado  
(Historic Resources of Colorado College MPS)

Section number 8 Page 11

Chicago before moving to Colorado for his health. He was chief assistant to architect Robert Roeschlaub for several years in Denver. Hetherington moved to Colorado Springs and became associated with Douglas in 1896. Douglas came to the United States in 1898, and lived in Florida and Denver before moving to Colorado Springs in 1888. The partnership of Douglas and Hetherington designed "many of the principal buildings in Colorado Springs," including several buildings at Colorado College, the Country Club, and several Broadmoor cottages. The firm designed the Unitarian Church, the Ute Park Hotel, the Odd Fellows Hall, and the McIntyre and Barnett Block. The partners were described as "prominent among the architects of the city who have contributed their genius and skill to beautifying the garden spot of Colorado." Following the departure of Douglas in 1914, Hetherington established a partnership with Thomas McLaren.<sup>4</sup>

Construction of the dormitory began in the spring of 1903, and the building was ready to be occupied when classes resumed in the fall. The Peachblow sandstone cornerstone of the building was laid at the northeast corner on 4 April 1903, with an attendant ceremony organized by the Woman's Educational Society. The simple cornerstone laying services included a short speech by President Slocum and a hymn sung by the student body. Ministers from the First Baptist Church and the First Congregational Church led prayers.<sup>5</sup>

The building was named in honor of Marion McGregor Noyes, a popular member of the Colorado College faculty who had previously worked at Wellesley College. Miss Noyes served as President Slocum's assistant in the Philosophy Department from 1891-1897, and also taught Latin. She had obtained several major contributions for the construction of the new building.<sup>6</sup>

The design of McGregor Hall reflected President Slocum's strong support of the athletic program at Colorado College. The basement of the building contained a women's gymnasium, the first athletic facility designed exclusively for women on the campus. The office of the women's director of physical education was also in the building. The landscaping of the adjacent Women's Quadrangle also reflected the increased emphasis on athletics: tennis courts were erected in the open space bounded on three sides by women's residence halls.<sup>7</sup>

The building harmonized with the existing women's residence halls in its stone construction,

---

<sup>4</sup>Ginny Kiefer, Curator Special Collections & Archives, Colorado College, Tutt Library, Telephone Interview by Thomas H. Simmons, 12 August 1999; **Mountain Sunshine**, 2(December-February 1900-01); **Rocky Mountain News**, 9 December 1934, 7; Sargent & Rohrbacher, **The Fortunes of a Decade** (Colorado Springs: the Colorado Springs Evening Telegraph, 1900; reprint Colorado Springs: Old Times Publishers Co., 1979), 98; Manly D. and Eleanor R. Ormes, **The Book of Colorado Springs** (Colorado Springs: the Dentan Printing Co., 1933), 350.

<sup>5</sup>**Colorado Springs Gazette**, 24 March 1903, 5; and 4 April 1903, 5.

<sup>6</sup>Loevy, 87.

<sup>7</sup>Loevy, 87 and 100.

United States Department of the Interior  
National Park Service

## National Register of Historic Places Continuation Sheet

Section number 8 Page 12

McGregor Hall, El Paso County, Colorado  
(Historic Resources of Colorado College MPS)

---

symmetrical composition with central porch, evenly spaced windows, wood shingles, and stucco and half-timber ornament. However, the massive rectilinear composition belied the building's status as an institutional facility. The first floor included a parlor, an apartment for the mistress of the house, and a few sleeping rooms. The upper two stories included the remainder of the bedrooms, which totalled sixty. The building was occupied originally by junior and freshman women. No provision was made for kitchen or dining facilities; occupants took their meals in the other halls. When the dormitory opened, it was described as "a building of most attractive design."<sup>8</sup>

Like many other educational institutions, Colorado College suffered declining enrollments and reduced income during the early 1930s. When the number of women enrolled at the college dropped precipitously in 1933, McGregor Hall was closed. The college was able to reopen the building the following year. In the 1940s, the building accommodated forty-five women, as well as housing the women's gymnasium. In its later years, McGregor was converted to a men's dormitory, which is its present function.<sup>9</sup>

---

<sup>8</sup>Louise Buckley, "History of Colorado College, 1874-1904," M.A. Thesis, 1935; and Colorado College, Tutt Library, Special Collections, McGregor Hall.

<sup>9</sup>Loevy, 121, 124; Colorado Springs Gazette-Telegraph, "Special Section," 31 January 1949.



United States Department of the Interior  
National Park Service

## National Register of Historic Places Continuation Sheet

McGregor Hall, El Paso County, Colorado  
(Historic Resources of Colorado College MPS)

Section number   9   Page  13 

---

### Bibliography

- Buckley, Louise. "History of Colorado College, 1874-1904." M.A. Thesis. Colorado Springs: Colorado College, 1935.
- Colorado College. Tutt Library. Special Collections and Archives. College archives and photographs.
- Colorado Historical Society. Office of Archaeology and Historic Preservation. Architects Files: Douglas and Hetherington.
- Colorado Springs Gazette.** 24 March 1903 and 4 April 1903.
- Colorado Springs Gazette-Telegraph.** "Special Section." 31 January 1949.
- Denver Public Library. Western History Department. Colorado College Clipping file.
- Facts.** 1898, and 23 August 1902.
- Hill, Robert. **Colorado College, 1874-1999, A History of Distinction.** Colorado Springs: Colorado College Office of College Relations, 1998.
- Kiefer, Ginny. Curator Special Collections & Archives. Colorado College. Interview by Thomas H. Simmons, 12 August 1999.
- Loevy, Robert D. **Colorado College: A Place of Learning, 1874-1999** Colorado Springs: Colorado College, 1999.
- Mountain Sunshine.** December-February 1900-1901.
- Ormes, Manley D. and Eleanor R. **The Book of Colorado Springs.** Colorado Springs: the Dentan Printing Co., 1933.
- Pike's Peak Regional Library. Local History Department. Clipping File: Architects Associated with Development of the North End.
- Reid, J. Juan. **Colorado College: The First Century, 1874-1974.** Colorado Springs: The Colorado College, 1979.

United States Department of the Interior  
National Park Service

**National Register of Historic Places  
Continuation Sheet**

McGregor Hall, El Paso County, Colorado  
(Historic Resources of Colorado College MPS)

Section number   9   Page  14 

---

Sargent & Rohrbacher. **The Fortunes of a Decade.** Colorado Springs: The Colorado Springs Evening Telegraph, 1900; reprint Colorado Springs: Old Times Publishers Co., 1979.

United States Department of the Interior  
National Park Service

**National Register of Historic Places  
Continuation Sheet**

McGregor Hall, El Paso County, Colorado  
(Historic Resources of Colorado College MPS)

Section number   10   Page   15  

---

**Boundary Description**

The nominated property consists of the perimeter (footprint) of the building plus fifteen feet on all sides, in Section 7 (SE 1/4 of the NE 1/4 of the SW 1/4/ of the NW 1/4), Township 14 South, Range 66 West, Colorado Springs, El Paso County, Colorado.

**Boundary Justification**

The nominated property encompasses the entire extent of the building and excludes other buildings.

United States Department of the Interior  
National Park Service

**National Register of Historic Places  
Continuation Sheet**

McGregor Hall, El Paso County, Colorado  
(Historic Resources of Colorado College MPS)

Section number Photographs Page 16

---

**Photographic Index**

The location and camera direction of photographic views are indicated on the Sketch Map. Information that is the same for all photographs:

Name of the Property: McGregor Hall, Colorado College  
City and State: Colorado Springs, Colorado  
Photographer: Thomas H. Simmons  
Date: May 1999  
Location of Original Negatives:

Colorado College  
14 E. Cache La Poudre  
Colorado Springs, Colorado 80903

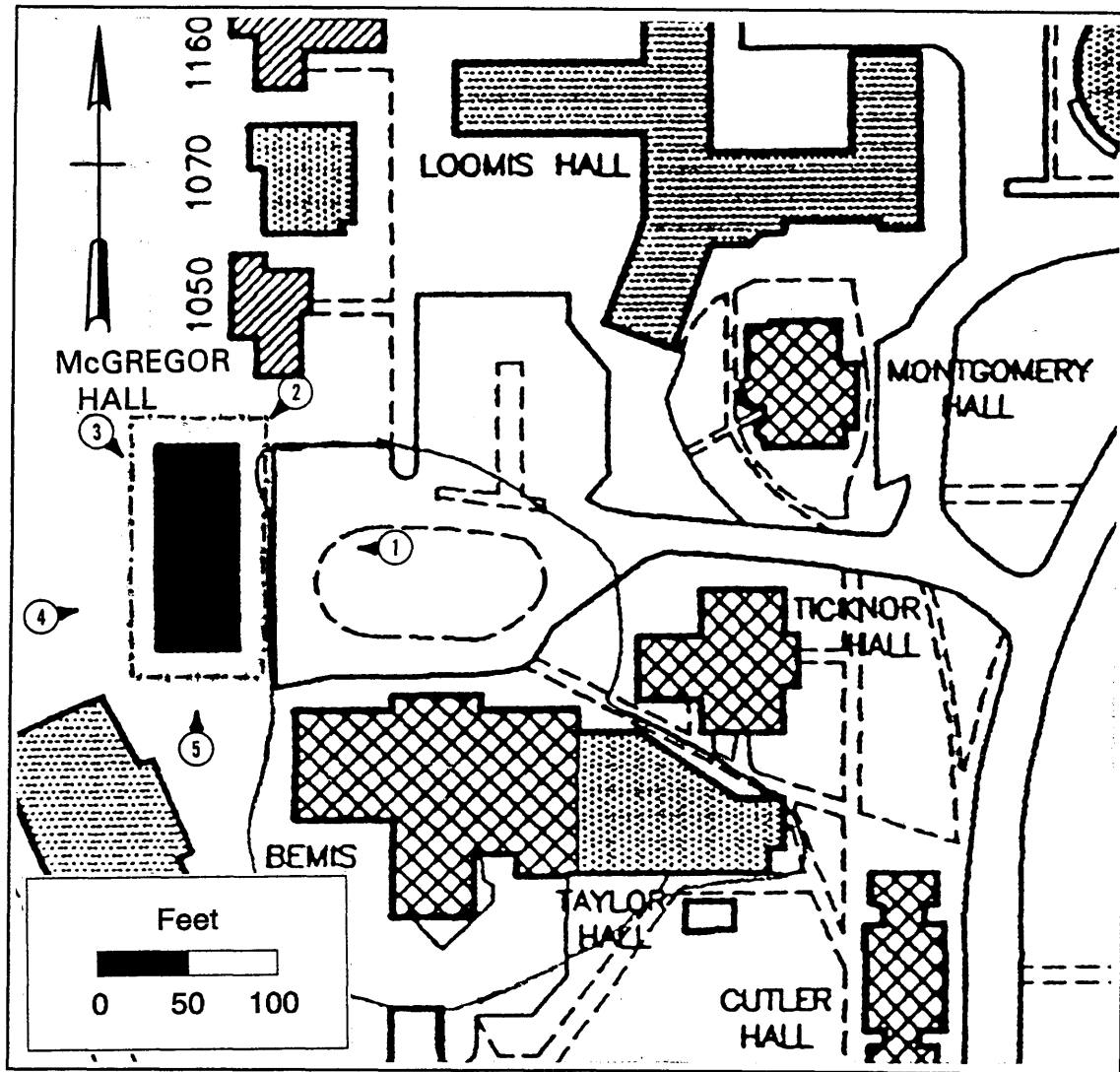
<b>Photograph Number</b>	<b>Camera Direction</b>	<b>Description of View</b>
1	West	Front (east side)
2	Southwest	North side
3	Southeast	Rear (west side) and part of the north side
4	East- Northeast	Rear (west side)
5	North	South side

United States Department of the Interior  
National Park Service

**National Register of Historic Places  
Continuation Sheet**

McGregor Hall, El Paso County, Colorado  
(Historic Resources of Colorado College MPS)

Section number Sketch Map Page 17



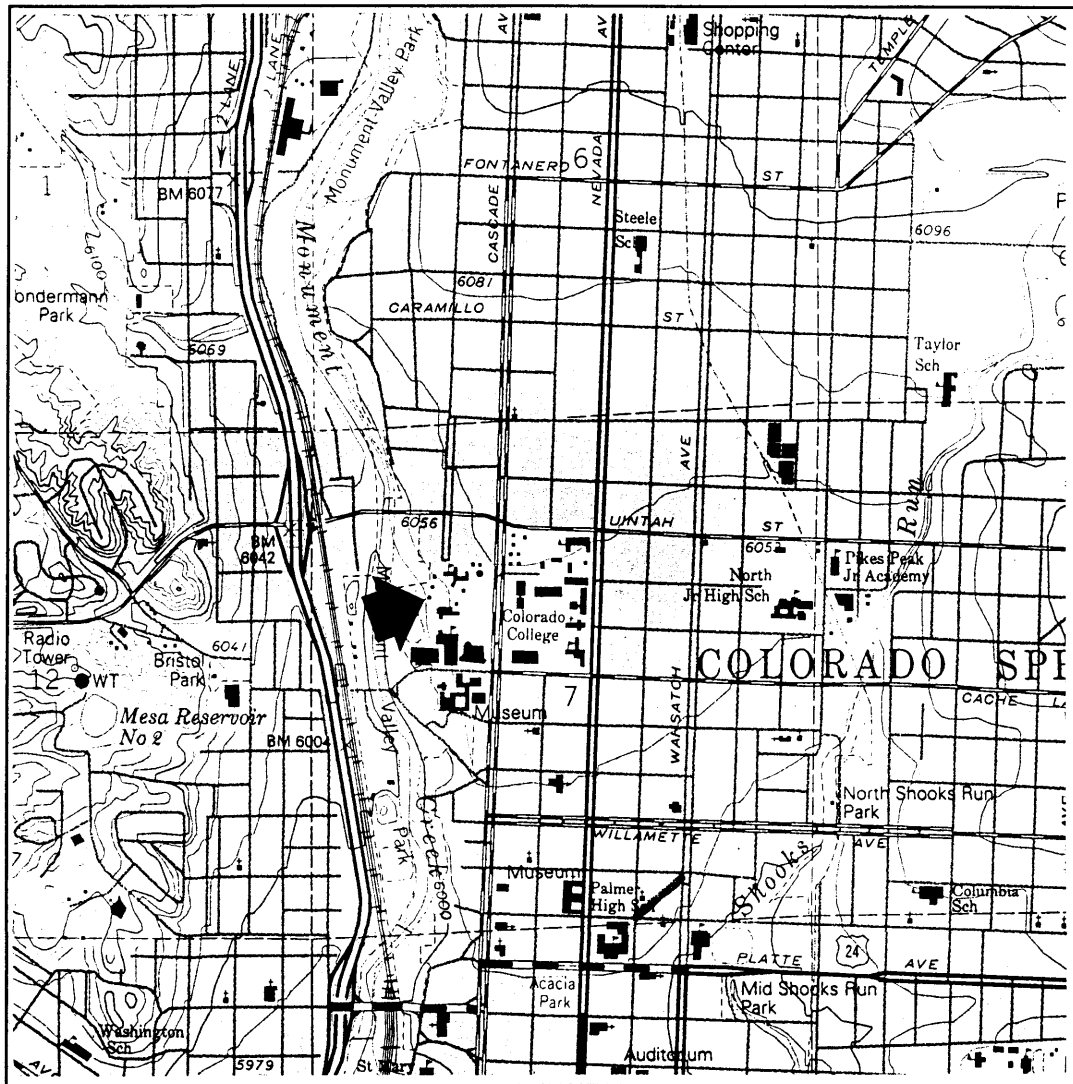
The dot-and-dash line shows the boundary of the nominated area. Photograph numbers and locations are keyed to the discussion in the narrative. SOURCE: Based on extract of Exhibit 1 in Manning et al, *Colorado College Historic Preservation Project* (1993).

United States Department of the Interior  
National Park Service

# National Register of Historic Places Continuation Sheet

McGregor Hall, El Paso County, Colorado  
(Historic Resources of Colorado College MPS)

Section number USGS Map Page 18



Arrow indicates location of McGregor Hall. SOURCE: U.S. Geological Survey, "Colorado Springs, Colo.," 7.5. minute map (Denver, Colorado: U.S. Geological Survey, 1961, revised 1994).