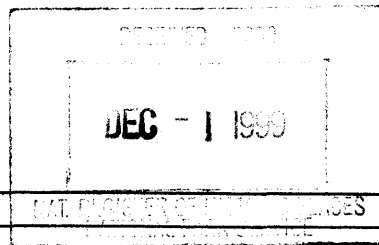


1615



**NATIONAL REGISTER OF HISTORIC PLACES  
REGISTRATION FORM**

**1. Name of Property**

historic name: Railroad Section Foreman's House  
other names/site number:

**2. Location**

street & number: No.3 Railroad Road not for publication  
city or town: Valley Park vicinity  
state: Mississippi code: MS county: Issaquena code: 055 zip code: 39177

**3. State/Federal Agency Certification**

As the designated authority under the National Historic Preservation Act of 1966, as amended, I hereby certify that this  nomination \_\_\_ request for determination of eligibility meets the documentation standards for registering properties in the National Register of Historic Places and meets the procedural and professional requirements set forth in 36 CFR Part 60. In my opinion, the property  meets \_\_\_ does not meet the National Register Criteria. I recommend that this property be considered significant \_\_\_ nationally \_\_\_ statewide  locally. (\_\_\_ See continuation sheet for additional comments.)

Kenneth H. P. Park Nov. 23, 1999  
Signature of certifying official Date

Deputy State Historic Preservation Officer  
State or Federal agency and bureau

In my opinion, the property \_\_\_ meets \_\_\_ does not meet the National Register criteria. (\_\_\_ See continuation sheet for additional comments.)

\_\_\_\_\_  
Signature of commenting or other official Date

\_\_\_\_\_  
State or Federal agency and bureau

**4. National Park Service Certification**

I, hereby certify that this property is:  
 entered in the National Register,  
\_\_\_ See continuation sheet.  
\_\_\_ determined eligible for the  
National Register  
\_\_\_ See continuation sheet.  
\_\_\_ determined not eligible for the  
National Register  
\_\_\_ removed from the National Register  
\_\_\_ other (explain): \_\_\_\_\_

for Signature of the Keeper Date of Action  
Edson H. Beall 12/30/99

Railroad Section Foreman's House

Issaquena County, Mississippi

Name of Property

County, State

**5. Classification**

**Ownership of Property:** private

**Number of Resources within Property:**  
(Do not include previously listed resources in the count)

**Category of Property:** building

Contributing

Noncontributing

2

buildings

sites

structures

objects

2

Total

**Name of related multiple property listing**  
(Enter "N/A" if property is not part of a multiple property listing.)

**Number of contributing resources previously listed  
in the National Register**

**6. Function or Use**

**Historic Functions:**  
DOMESTIC: single dwelling

**Current Functions:**  
DOMESTIC: single dwelling

**7. Description**

**Architectural Classification(s):** no style

**Materials:**

foundation: wood, brick  
roof: other: composition shingles  
walls: wood  
other

**Narrative Description:**

See Continuation Sheets

**United States Department of the Interior  
National Park Service**

**NATIONAL REGISTER OF HISTORIC PLACES  
CONTINUATION SHEET**

Section: 7

Page: 1

Railroad Section Foreman's House  
Valley Park, Issaquena County, Mississippi

---

**DESCRIPTION**

The former Railroad Section Foreman's House at Valley Park, Mississippi, is a small wooden house that faces eastward about fifty feet west of the tracks that once carried the trains of the Yazoo & Mississippi Valley Railroad and later the Illinois Central Railroad. This rail line has been inactivated and has been removed through Issaquena County except for a mile-long stretch of tracks that remain in place in front of the section house. Beyond the house to the west is a wide expanse of flat, open cropland that is characteristic of the Mississippi Delta.

The Section Foreman's House is a one-story, wood-frame, gable-roofed cottage with a hip-roofed addition at the south end and a shed-roofed front porch on the east. It is raised about four or five feet off the ground on brick piers and creosote-treated wooden posts.

The house was originally clad in random-width board-and-batten wood siding. Some of the vertical planks are as wide as 16 inches or more. About 1935, when the south wing was added, the house was covered with horizontal round-edged "novelty" wooden siding which was laid over the original board-and-batten siding. This was, in turn, covered with vinyl siding about 1990. During the restoration of the house between 1995 and 1999, the vinyl siding and most of the horizontal siding were removed, revealing the original wall surfaces. The board-and-batten siding is all original except on the south addition. During the restoration, remnants were found of the Yazoo & Mississippi Valley Railroad paint scheme applied in 1923, consisting of a bold golden-yellow on the upper part of the walls and a dark reddish brown on the lower walls. This scheme was used in repainting the restored board-and-batten walls. A portion of the later horizontal siding was retained within the screened front porch, and it retains the gray paint color used when the Illinois Central Railroad owned the property.

The plan of the house consists of two large, roughly square front rooms, behind which is a range of three smaller rooms, and beyond them a back porch recessed between two tiny cabinet rooms. Between the two front rooms is a space containing a closet and back-to-back fireplaces served by a central chimney. The northern front room serves as a parlor, and the southern front room is a bedroom. Both of the front rooms open out to the front porch. The central room of the rear portion is the dining room, which connects to the back porch. North of the dining room is the kitchen, off of which is the pantry, located in the northern rear cabinet room. To the south of the dining room is a second bedroom, which connects to a bathroom located in the southern rear cabinet room. Directly south of the southern front room is a roughly-square addition, containing a third bedroom, which has its own exterior door at the south end.

The walls in all of the rooms are surfaced in vertical boards. The ceilings throughout are also finished with painted boards. Trim boards and window and door casings throughout the house are simple, unmolded boards. The only decorative features on the interior are the mantelpieces in the two front rooms. The parlor has a wood-burning fireplace with a plaster facing, surrounded by a simple wooden mantelpiece of roughly square proportions, in the form of a pair of slightly-raised flat pilasters surmounted by a lintel, supporting a simple shelf with rounded corners. The southern front room has an iron coal-grate within a plaster facing, surrounded by a mantel similar in proportion to that in the northern room, but with somewhat different detailing. Interior doors throughout the house are original two-panel wooden doors with original hardware. The original front doors had been lost, and have been replaced by 15-light glazed wooden doors. The exterior windows, mostly six-over-six double-hung sash, are all recent replacements, but are similar in form to the originals.

**United States Department of the Interior  
National Park Service**

**NATIONAL REGISTER OF HISTORIC PLACES  
CONTINUATION SHEET**

Section: 7

Page: 2

Railroad Section Foreman's House  
Valley Park, Issaquena County, Mississippi

---

(Description, continued)

On the grounds of the house are a garage, a reconstructed privy, a pump house, an original ice house, and a "storm pit." The garage (which is counted as a secondary contributing building) is a simple wood-frame gable-roofed building with board-and-batten siding. The other outbuildings are all very minor structures (not counted in the list of resources) but all are contemporary with the house except for the reconstructed privy. The railroad track, which runs north-south a short distance east of the house, falls outside of the boundary of the nominated property.

The Railroad Section Foreman's House at Valley Park is an exceptionally well-preserved and well-maintained example of railroad worker housing, retaining a high degree of integrity in all respects. Especially noteworthy is its integrity of location and setting alongside a preserved segment of railroad track now owned by the owner of the section house, insuring the protection of the tracks, and thus of the setting of the section house, from the threat of removal of rail lines that has diminished the setting of many other historic railroad-related resources throughout Mississippi.

**8. Statement of Significance**

**Applicable National Register Criteria**

- X    **A**    Property is associated with events that have made a significant contribution to the broad patterns of our history.
- B**    Property is associated with the lives of persons significant in our past.
- X    **C**    Property embodies the distinctive characteristics of a type, period, or method of construction or represents the work of a master, or possesses high artistic values, or represents a significant and distinguishable entity whose components lack individual distinction.
- D**    Property has yielded, or is likely to yield information important in prehistory or history.

**Areas of Significance**

transportation  
architecture

**Period of Significance**

circa 1882-84 to 1946

**Significant Dates**

circa 1882-84, 1935

**Criteria Considerations:**

Property is:

- A**    owned by a religious institution or used for religious purposes.
- B**    removed from its original location.
- C**    a birthplace or a grave.
- D**    a cemetery.
- E**    a reconstructed building, object, or structure.
- F**    a commemorative property.
- G**    less than 50 years of age or achieved significance within the past 50 years.

**Significant Person(s)** N/A

**Cultural Affiliation(s)** N/A

**Architect/Builder**  
unknown

**Narrative Statement of Significance:**            See continuation sheets.

**9. Major Bibliographical References**

**Bibliography**            See continuation sheet.

**Previous documentation on file (NPS)**

- preliminary determination of individual listing (36 CFR 67) has been requested.
- previously listed in the National Register
- previously determined eligible by the National Register
- designated a National Historic Landmark
- recorded by Historic American Buildings Survey  
# \_\_\_\_\_
- recorded by Historic American Engineering Record  
# \_\_\_\_\_

**Primary Location of Additional Data**

- State Historic Preservation Office
- Other State agency
- Federal agency
- Local government
- University
- Other

Name of repository:

MS Dept. of Archives & History

**United States Department of the Interior  
National Park Service**

**NATIONAL REGISTER OF HISTORIC PLACES  
CONTINUATION SHEET**

Section: 8

Page: 3

Railroad Section Foreman's House  
Valley Park, Issaquena County, Mississippi

---

**STATEMENT OF SIGNIFICANCE**

The former Railroad Section Foreman's House at Valley Park, Mississippi, is locally significant under Criterion A in the area of Transportation, for its association with the development and operation of the rail transportation network in the Mississippi Delta in the late nineteenth and early twentieth centuries, and also under Criterion C in the area of architecture as a well preserved example of the type of building constructed for railroad worker housing during that period. The period of significance extends from circa 1882, when the house is believed to have been constructed, to 1946, the year the Yazoo & Mississippi Valley Railroad was fully merged with the Illinois Central Railroad and a time when the patterns of American rail transportation were beginning to change substantially following the end of the Second World War.

The Railroad Section Foreman's House at Valley Park is an exceptionally well-preserved and well-maintained example of railroad worker housing, retaining a high degree of integrity in all respects. Especially noteworthy is its integrity of location and setting alongside a preserved segment of railroad track now owned by the owner of the section house.

The rail line on which this house was built was begun about 1882 and was completed between Memphis and New Orleans in September of 1884 by the Louisville, New Orleans and Texas Railroad. In 1892 the Louisville, New Orleans, and Texas Railroad was acquired by the rival Yazoo and Mississippi Valley Railroad, which had been chartered in 1882 as a subsidiary of the Illinois Central Railroad. Prior to 1892 the Y&MV had served largely as a local feeder line for the Illinois Central, but with its acquisition of the LNO&T it gained possession of a recently completed direct route between New Orleans and Memphis, enabling it to become one of the major carriers between those two cities and the major railroad in the Delta region of Mississippi. The Y&MV eventually grew to serve a large area throughout eastern Mississippi and southeastern Louisiana, linking New Orleans, Baton Rouge, Natchez, Vicksburg, Jackson, Memphis, and many communities in the Mississippi Delta, including Yazoo City, Greenwood, Greenville, Cleveland, and Clarksdale. It played an important role in the settlement and economic growth of the Delta from the 1890s to the 1930s. The operations of the Y&MV were closely coordinated with those of the Illinois Central Railroad, but it functioned as a separate company until it was formally merged with the Illinois Central in 1946.<sup>1</sup> The rail line through Valley Park was abandoned in 1984. In 1985, Mr. C. B. (Buddie) Newman purchased a half-mile-long stretch of the tracks adjacent to the house in order to preserve them, but apart from this portion the tracks were taken up.<sup>2</sup>

---

<sup>1</sup> The historical information about the Yazoo and Mississippi Valley Railroad is largely drawn from Carlton J. Corliss, *Main Line of Mid-America: the Story of the Illinois Central Railroad* (New York: Creative Age Press, 1950), pp. 240-243. Additional information has also been compiled in an unpublished reference document entitled "Railroads in Mississippi" assembled for the Historic Preservation Division, Mississippi Department of Archives and History.

<sup>2</sup> C. B. (Buddie) Newman, personal notes and correspondence. At that time Mr. Newman was serving as Speaker of the Mississippi House of Representatives.

**United States Department of the Interior  
National Park Service**

**NATIONAL REGISTER OF HISTORIC PLACES  
CONTINUATION SHEET**

Section: 8 Page: 4 Railroad Section Foreman's House  
Valley Park, Issaquena County, Mississippi

---

(Statement of Significance, continued)

Valley Park was established on the main line of the LNO&T Railroad, which was subsequently one of the main lines of the Y&MV, connecting New Orleans and Memphis. Originally named Halpin in 1884, the community was renamed Valley Park in 1890, taking the name of a plantation owned by Mr. Harvey Aden. The community began as a service point for the railroad, eventually containing a large, two-story depot, a cluster of section houses for a section maintenance crew, a large water tank, a water well, and a pump house. A settlement grew up around the railroad facilities. The Railroad Section Foreman's House and a nearby toolhouse are the only railroad-related buildings that still survive at Valley Park.

The maintenance section based at Valley Park was the third section on the Y&MV line running northward from Vicksburg. The second section crew north of Vicksburg was based at the little community of Kings, and the second was located about eleven miles to the south of Valley Park at a settlement called Floweree, but the section houses at Kings and Floweree no longer survive.<sup>3</sup> Other surviving section foreman's houses are located at the communities of Nitta Yuma and Onward, north of Valley Park on the same rail line. Some others undoubtedly survive elsewhere in the Delta region, but no others have yet been documented, and relatively few have yet been identified elsewhere in the state.

The house is believed to have been built between 1882 and 1884, when the rail line was constructed. It is known to have been standing by 1888, when it is mentioned in a deed. A date of construction in the 1880s is supported by certain physical features of the house, such as the wide, random-width cypress planking in the board-and-batten walls and in the use of square nails in the construction.

In 1918 the Section Foreman's House became the home of J. C. Newman, Sr. and his family. J. C. Newman, Sr. served as section foreman from 1917 until his death in 1945 and also served for several terms in the Mississippi Legislature during the 1930s and 40s. His son C. B. (Buddie) Newman, who was born in the Section Foreman's House in 1921, followed his father into public office. He served a long and distinguished tenure in the Mississippi Legislature from 1948 to 1988, serving as Speaker of the House of Representatives from 1976 to 1988.<sup>4</sup>

The house was remodeled about 1935, when several major changes were made: A wing containing a third bedroom was added at the south, a bathroom was added, and the house was clad in horizontal milled siding which was laid over the original siding. About 1937 the house was wired for electricity.

The house continued to be owned by the Y&MV Railroad and subsequently the Illinois Central Railroad, and used as housing for railroad personnel, until 1969, when it was sold by the Illinois Central to C. O. Peeples, who served as Section Foreman from 1967 to 1986. C. B. (Buddie) Newman purchased the house from E. C. Peeples, Sr., son of C. O. Peeples, in 1995, and undertook its restoration between 1995 and 1999.

---

<sup>3</sup> The section houses at Floweree were the subject of a study done for the Mobile District, US Army Corps of Engineers in 1994 entitled *National Register Documentation of the Mahannah Farms Railroad Section Houses at Floweree, Mississippi*, by Robert E. Johnson and William R. Adams or Florida Archaeological Services, Inc. This study includes an extensive discussion of the history of railroads in the Mississippi Delta, which contains detailed information about the organization and activities of section crews. The section houses at Floweree were demolished about 1997.

<sup>4</sup> Information about the history of the house is from C. B. (Buddie) Newman, personal notes and correspondence.

**United States Department of the Interior  
National Park Service**

**NATIONAL REGISTER OF HISTORIC PLACES  
CONTINUATION SHEET**

Section: 8 Page: 5 Railroad Section Foreman's House  
Valley Park, Issaquena County, Mississippi

---

(Statement of Significance, continued)

As it stands today, the house has been restored largely to its pre-1935 appearance, inside and out, with the exception of the south wing and bathroom, which were retained, and the porch and front facade, which have their 1935 appearance. In its restored condition, and retaining its historic setting in relationship to the preserved segment of tracks, it is a well-preserved example of a late-nineteenth-century railroad section house.

**BIBLIOGRAPHY**

Corliss, Carlton J. *Main Line of Mid-America: the Story of the Illinois Central Railroad*. New York: Creative Age Press, 1950.

Johnson, Robert E., and William R. Adams. *National Register Documentation of the Mahannah Farms Railroad Section Houses at Floweree, Mississippi*. Mobile, Alabama: Mobile District, US Army Corps of Engineers, 1994.

Newman, C. B. (Buddie). Personal notes and correspondence.

**VERBAL BOUNDARY DESCRIPTION**

The nominated property consists of a tract of land of approximately 1.14 acres, described as follows: The section house property lying westerly of the abandoned Illinois Central Railroad Company's main track and situated in the Southeast Quarter of Section 12, Township 9 North, Range 7 West of the Choctaw Meridian, at Valley Park, Mississippi, more particularly described as follows, to-wit: Beginning at the northwest corner of said Section House lot, said point being 206.4 feet northerly from Mile Post M-198, as measured along the centerline of said main track and 150 feet westerly therefrom as measured at a right angle thereto; thence easterly along said Section House northerly property line a distance of 115 feet, more or less, to a point which is 35 feet westerly from said centerline of main track, as measured at a right angle thereto; thence southerly parallel with and 35 feet westerly from said centerline of main track a distance of 430 feet, more or less, to said Section House southerly lot line; thence westerly along said Section House lot southerly line a distance of 115 feet; thence northerly parallel with and 150 feet westerly from said centerline of main track also along west line of Section House lot a distance of 430 feet to the point of beginning.

**BOUNDARY JUSTIFICATION**

This is the parcel of land on which the Railroad Section Foreman's House is located, and was the parcel sold by the Illinois Central Railroad when the property passed into private hands in 1969. It consists of the house and its immediate grounds and outbuildings, but does not include the adjacent railroad track.



**10. Geographical Data**

Acreage of Property: approximately 1.14 acres

| UTM References: | Zone | Easting | Northing | Zone | Easting | Northing |
|-----------------|------|---------|----------|------|---------|----------|
| A               | 15   | 700280  | 3612780  | C    |         |          |
| B               |      |         |          | D    |         |          |

Verbal Boundary Description See continuation sheet.

Boundary Justification: See continuation sheet.

**11. Form Prepared By**

|                  |   |                           |
|------------------|---|---------------------------|
| name/title:      | Richard J. Cawthon, Chief Architectural Historian | date: 26 August 1999      |
| organization:    | Mississippi Department of Archives and History    | telephone: (601) 359-6940 |
| street & number: | P. O. Box 517                                     | zip code: 39205-0517      |
| city or town:    | Jackson   | state: MS                 |

**Additional Documentation**

Submit the following items with the completed form:

Continuation Sheets

Maps

A USGS map (7.5 or 15 minute series) indicating the property's location.

A sketch map for historic districts and properties having large acreage or numerous resources.

Photographs

Representative black and white photographs of the property.

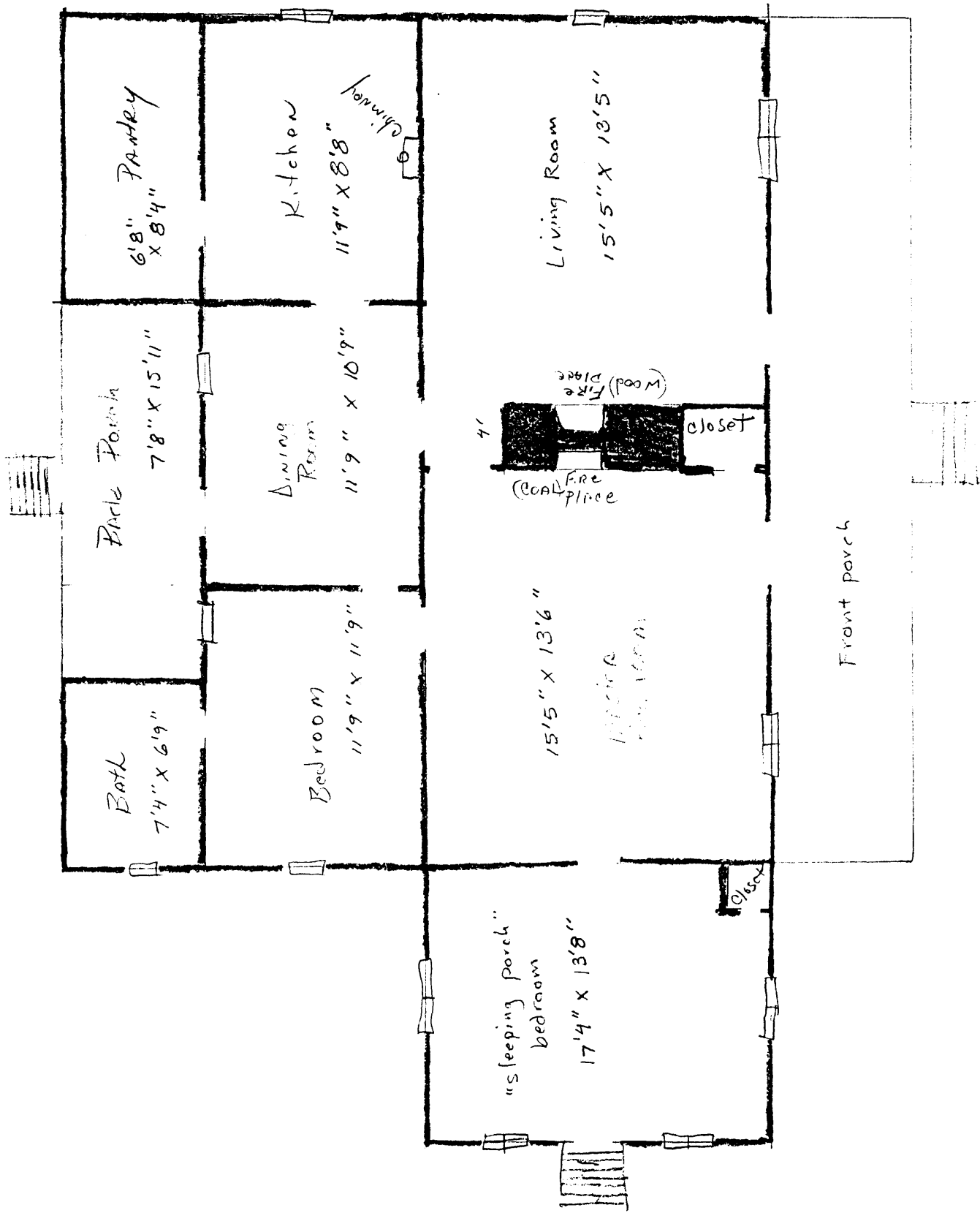
Additional items (Check with the SHPO or FPO for any additional items)

**Property Owner(s)**

|                  |                                  |                 |
|------------------|----------------------------------|-----------------|
| name:            | Mr. & Mrs. C. B. (Buddie) Newman | telephone:      |
| street & number: | P. O. Box 200                    | zip code: 39177 |
| city or town:    | Valley Park                      | state: MS       |

**Paperwork Reduction Act Statement:** This information is being collected for applications to the National Register of Historic Places to nominate properties for listing or determine eligibility for listing, to list properties, and to amend existing listings. Response to this request is required to obtain a benefit in accordance with the National Historic Preservation Act, as amended (16 U.S.C. 470 et seq.).

**Estimated Burden Statement:** Public reporting burden for this form is estimated to average 18.1 hours per response including the time for reviewing instructions, gathering and maintaining data, and completing and reviewing the form. Direct comments regarding this burden estimate or any aspect of this form to the Chief, Administrative Services Division, National Park Service, P.O. Box 37127, Washington, DC 20013-7127; and the Office of Management and Budget, Paperwork Reductions Projects (1024-0018), Washington, DC 20503.



RAILROAD SECTION FOREMAN HOUSE  
 VALLEY PARK, MS 39177  
 ISSAQUENA COUNTY

(not to scale)

**United States Department of the Interior  
National Park Service**

**NATIONAL REGISTER OF HISTORIC PLACES  
CONTINUATION SHEET**

Section:        Photos        Page: 6        Railroad Section Foreman's House  
Valley Park, Issaquena County, Mississippi

---

**PHOTOGRAPHS**

The following information is the same for all photographs:

1. Railroad Section Foreman's House
2. Valley Park, Issaquena County, Mississippi
3. photo by Richard J. Cawthon
4. June 1999
5. Historic Preservation Division, Mississippi Department of Archives and History

The photos are individually identified as follows:

- |               |   |
|---------------|---|
| Photo 1 of 4. | Oblique frontal view of the exterior of the house, from the northeast   |
| Photo 2 of 4  | Oblique view of the exterior of the house from the southeast, showing the house in relation to the railroad tracks.                 |
| Photo 3 of 4. | Rear view of the house from the southwest   |
| Photo 4 of 4. | Interior of the principal bedroom, viewed from the south, showing the fireplace, mantelpiece, and the surface and trim of the wall. |