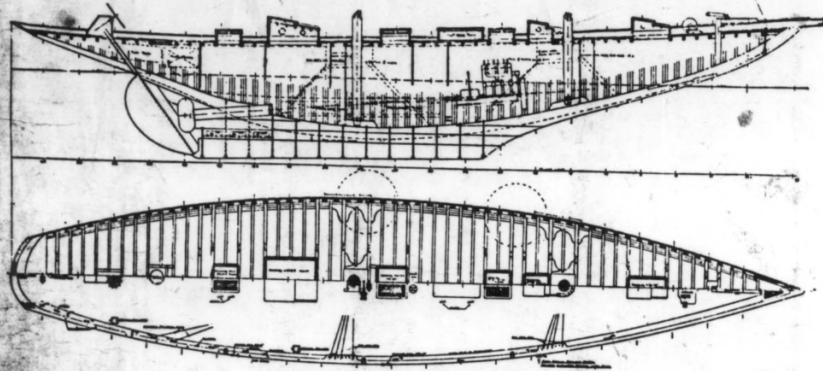


ADVENTURESS, Seattle, Washington  
Youth Adventure, Inc. Photo, 1986  
Youth Adventure, Inc.  
Adventureess under sail.  
Photo No. 1



Auxiliary Schooner Adventuress

### AUXILIARY SCHOONER ADVENTURESS

This schooner, from the designs of B. B. Crowninshield, has just been built by the Rice Brothers Company for Mr. John Borden, of Chicago. She will be taken to Seattle, Wash., by way of Magellan Straits.

From Seattle she will start for a trip to Alaska and the Arctic Ocean next May, and if conditions permit, will go to Wrangel Island in search of big game.

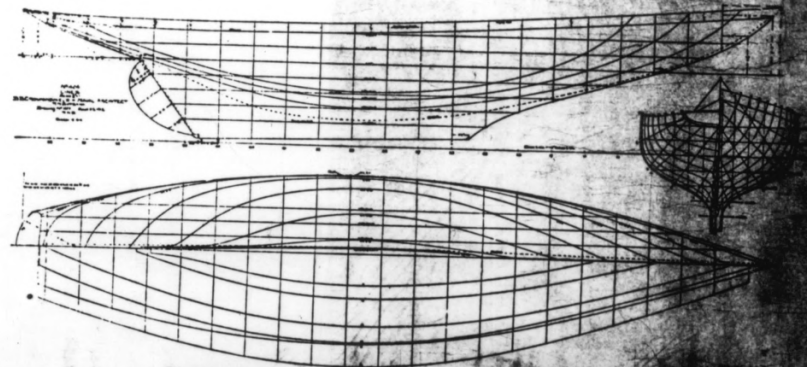
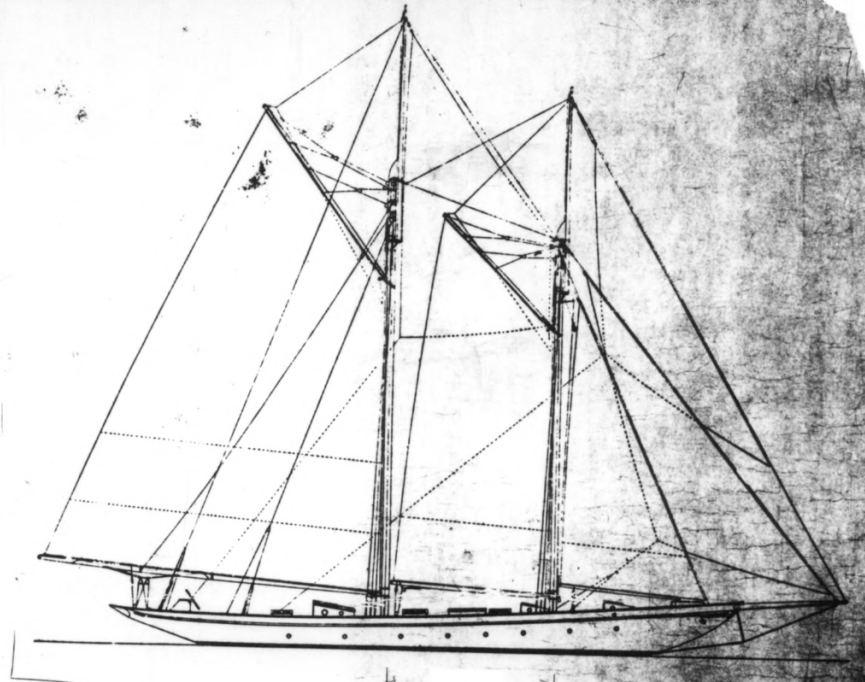
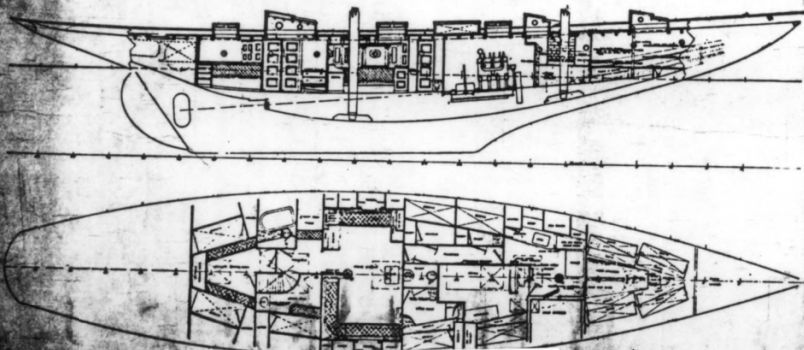
Adventuress will carry a 21-foot Atlantic Company dory launch. A regulation New Bedford 28-foot Arctic whale-boat by C. D. Beetle, of New Bedford, with full equipment of guns, lances, etc. A Hiram Lowell & Son (Boston) haddock dory and a 10-foot dinghy.

For auxiliary power she is equipped with an 80-h.p. three-cylinder Standard engine, for which her fuel tank will carry a supply of 1,400 gallons of distillate.

Electric lights will be supplied by an Edison storage battery, charged by a 5-h.p. engine and an Eck generator direct-connected. This generator will also furnish current to operate a refrigerating machine and an engine bolted under deck forward to operate the windlass.

#### General dimensions are:

Length o. a. ....	101 feet 10 inches
Length w. l. ....	71 " 2 "
Breadth .....	21 " 0 "
Draught .....	10 " 6 "
Displacement .....	98.2 long tons
Ballast, outside. ....	18 " "
Ballast, inside. ....	12 " "
Sail area (four lower sails) .....	4,571 square feet

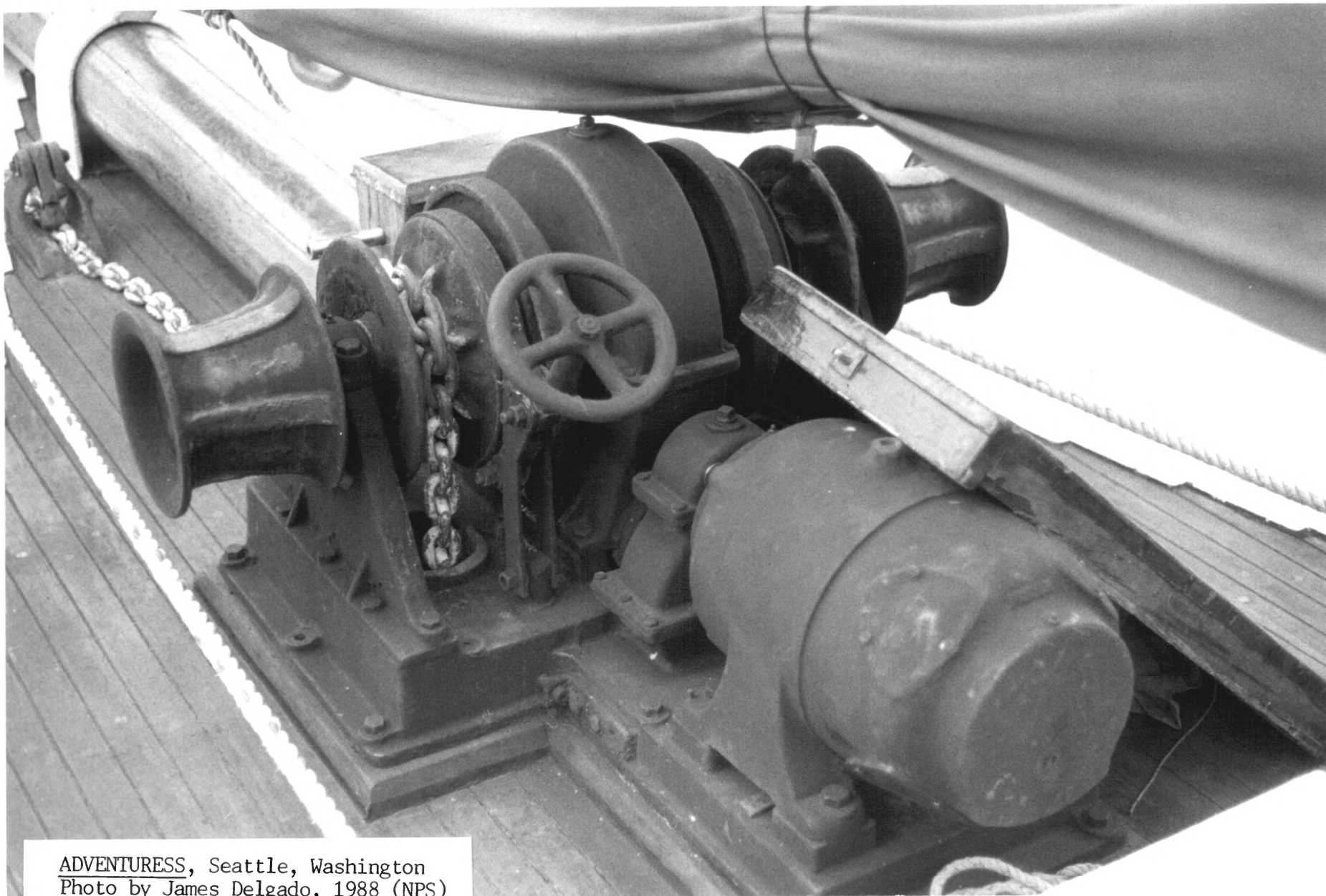


Auxiliary Schooner Adventuress, Designed by B. B. Crowninshield

ADVENTURESS, Seattle, Washington  
 Youth Adventure, Inc. Photo, 1913  
 Youth Adventure, Inc.  
 Rudder article and plans, 1913  
 Photo No. 2



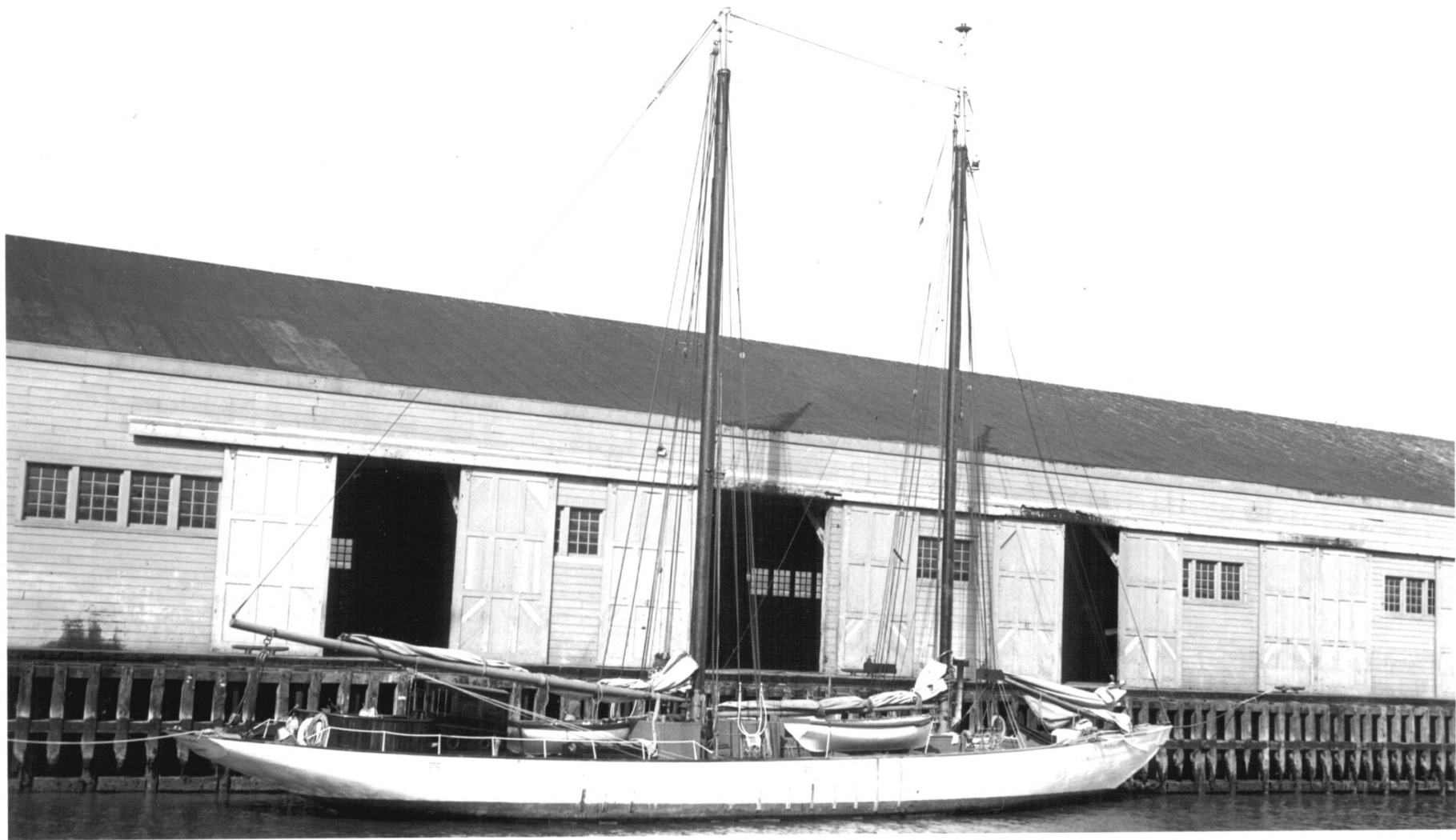
ADVENTURESS, Seattle, Washington  
Photo by James Delgado, 1988 (NPS)  
Youth Adventure, Inc.  
View of deck, looking aft.  
Photo No. 3



ADVENTURESS, Seattle, Washington  
Photo by James Delgado, 1988 (NPS)  
Youth Adventure, Inc.  
Ship's Windlass  
Photo No. 4



ADVENTURESS, Seattle, Washington  
Photo by James Delgado, 1988 (NPS)  
Youth Adventure, Inc.  
Ship's bell.  
Photo No. 5



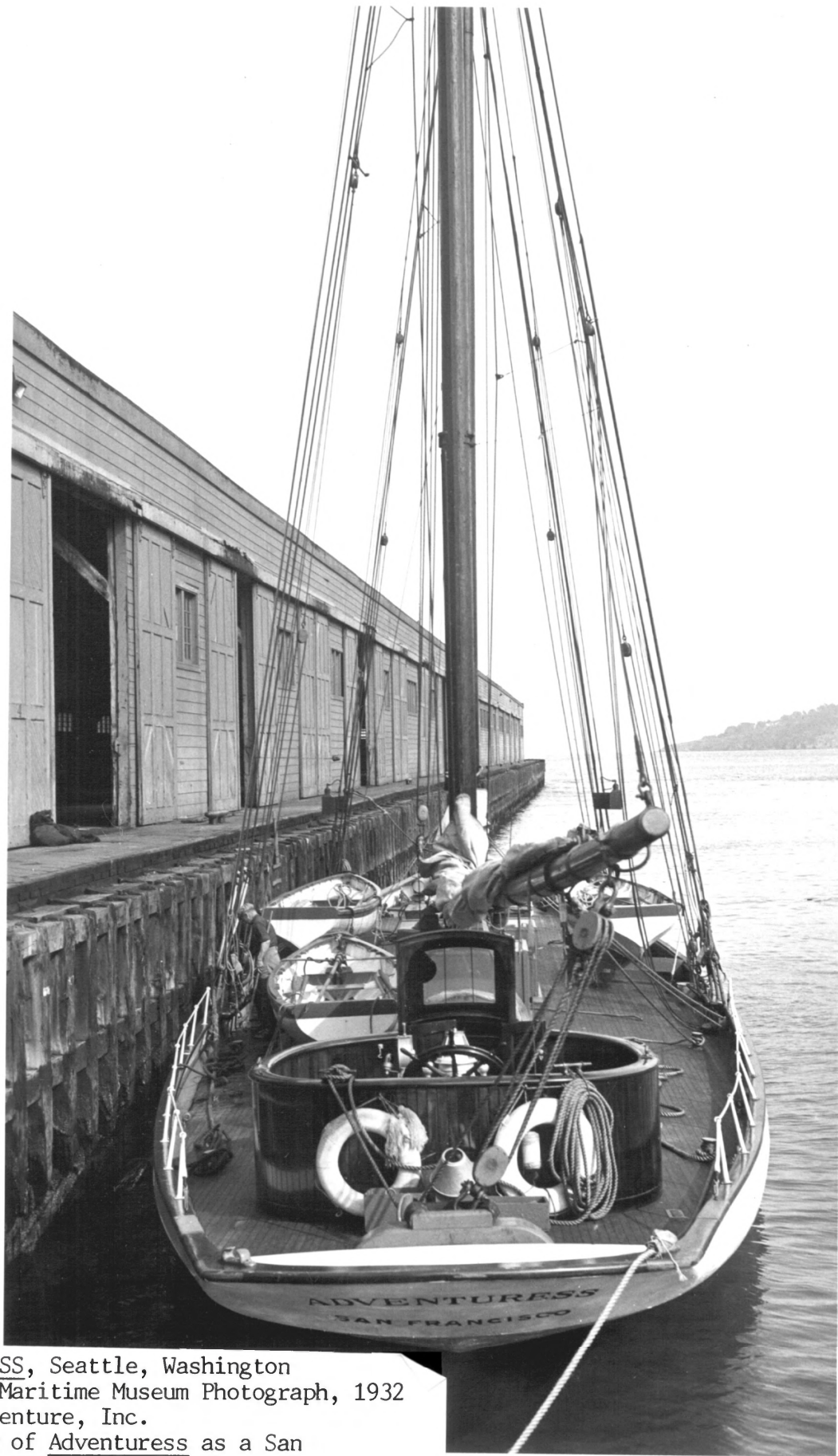
A1.21,063<sub>n</sub>

ADVENTUREES

(BUILT 1913; SCHOONER, 2m; PILOT BOAT)

PHOTO: JOHN W. PROCTOR

SAN FRANCISCO, CA: FEB 2, 1932



ADVENTURESS, Seattle, Washington  
National Maritime Museum Photograph, 1932  
Youth Adventure, Inc.  
Deck view of Adventure as a San  
Francisco Pilot schooner  
Photo No. 7



A1.21, 064 in

# ADVENTURESS

(BUILT 1913; SCHOONER, 2 m;  
PILOT VESSEL) PHOTO: JOHN  
PROCTOR - S. F. CA; 2/2/1932