



STREETSCAPE SHOWING WINDSOR HOTEL/ GEORGE  
MURPHY GROCERY AND SALOON/ ST. JAMES HOTEL  
LOWER 25TH STREET HISTORIC DISTRICT

Photo by J. Chipman 9-77

Neg. at Utah State Historic Society

Perspective view of northwest corner

NOV 2 1977 *Weber Co.*

*JAN 3 - 1978*

*1922*



ESTABLISHED  
1889

ANTIQUE  
JULY

OPEN

W.A. SCUDDER SALOON/ THE SENATE SALOON  
LOWER 25th STREET HISTORIC DISTRICT

Photo by J. Chipman 9-77

Neg. at Utah State Historic Society

View of north facade

*Webster Co.*

*100* JAN 31 1978

NOV 2 1977

*2922*



THE CONGRESS HOUSE/ ARCADE HOTEL  
LOWER 25TH STREET HISTORIC DISTRICT  
Photo by J. Chipman 9-77  
Neg. at Utah State Historic Society  
View of north facade

~~XX~~ 40 Weber Co.

NOV 2 1977

3922  
JAN 31 1978



NOV 2 1977

STREETSCAPE SHOWING NORTH SIDE OF 25TH  
STREET BETWEEN LINCOLN AND GRANT  
LOWER 25TH STREET HISTORIC DISTRICT

Photo by J. Chipman 9-77

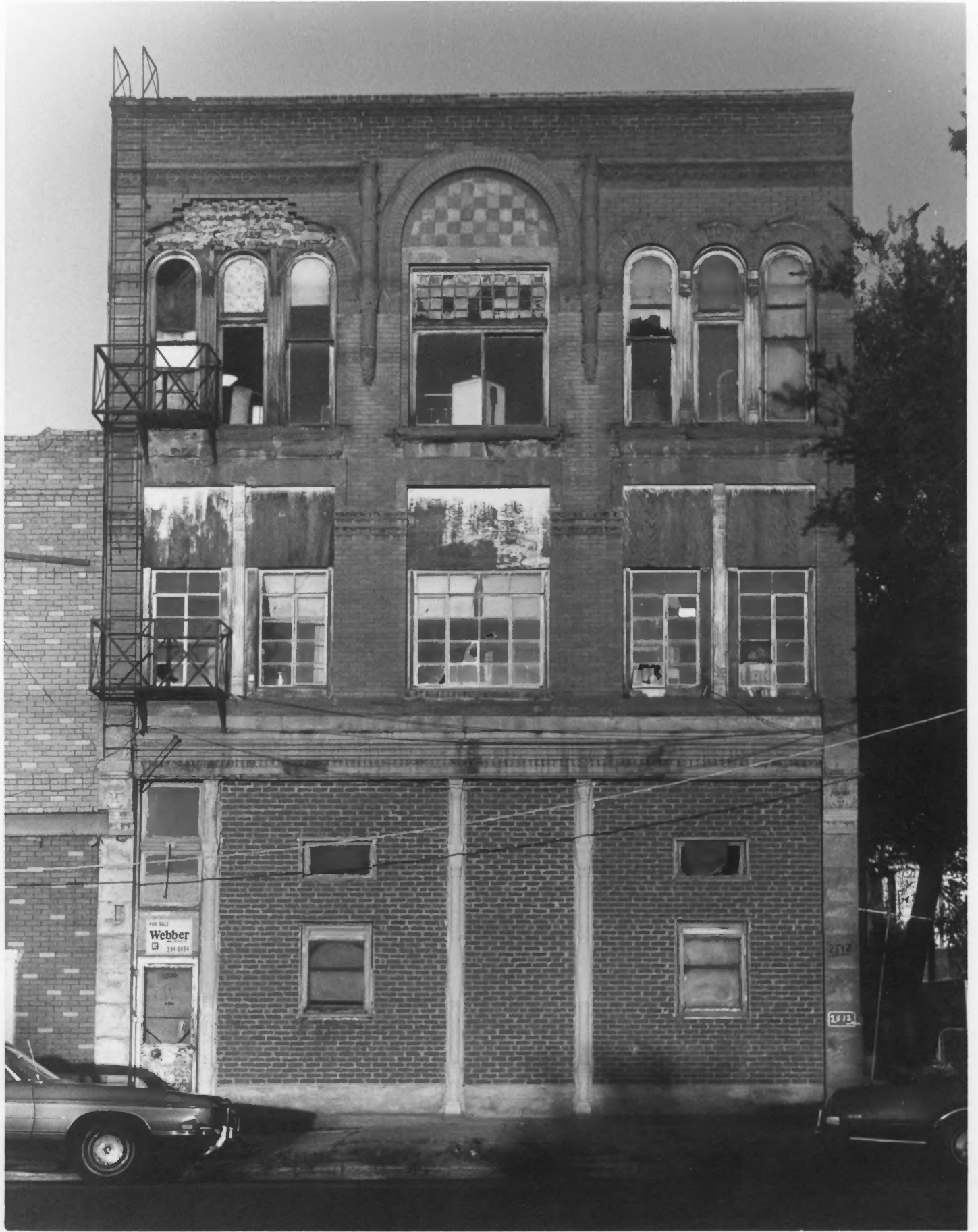
Neg. At Utah State Historic Society  
View looking east

W. L. Co.

4922

JAN 31 1978





FOR SALE  
**Webber**  
334-6664

2512

2512

BAMBERGER DEPOT/ ALLEN HOTEL  
LOWER 25TH STREET HISTORIC DISTRICT  
Photo by J. Chipman 9-77  
Neg. at Utah State Historic Society  
View of west facade

*Weber Co.*

**NOV 2 1977**

*5 y 22*

**JAN 31 1978**



El Borracho

10117  
Coke adds life to...  
Coca-Cola

5

NOV 2 1977

STREETSCAPE SHOWING C.C. KELLER ROOMS &  
RESTAURANT/ SALT LAKE & OGDEN RAILROAD CO.

LOWER 25TH STREET HISTORIC DISTRICT

Photo by J. Chipman 9-77

Neg. at Utah State Historic Society

Perspective view of northwest corner

~~XX~~ 30 Weber Co.

JAN 31 1978

6922



HELENA

211

LEASE  
OR RENT 3990738

ALCO  
ANTIQUES  
OR RENT

LEASE - RENT

NOV 2 1977

THE HELENA HOTEL/ SENATE CAFE  
LOWER 25TH STREET HISTORIC DISTRICT  
PHOTO BY J. Chipman 9-77  
Neg. at Utah State Historic Society  
View of north facade

*Weber Co.*

*7922*

*# 37*

JAN 31 1978

# FURNITURE BIN

**CUT RATE FURNITURE & UPHOLSTERY CO.**

2115

**CUT-RATE SUPPLIES**  
DO IT YOURSELF!  
USED  
SOFA & CHAIR FRAMES  
& FABRICS  
VINYL VELVET NYLON  
TOOLS TO FINISH

FURNITURE

**CUT-RATE UPHOLSTERY AND FURNITURE**

OPEN

OPEN



NOV 2 1977

LEFT: LUKE CRAWSHAW PHOTOGRAPHY/OHIO HOUSE  
RIGHT: VIVA CREAMER ROOMS, A.P. CHAPMAN  
ROOMS

LOWER 25TH STREET HISTORIC DISTRICT

Photo by J. Chipman 9-77

Neg. at Utah State Historic Society  
View of north facade

8422

# 35 Weber Co.

JAN 31 1978





12

NOV 2 1977

GRAND PACIFIC RESTAURANT/ HAFTEKE & CO./  
CRESTON HOTEL

LOWER 25TH STREET HISTORIC DISTRICT

Photo by J. Chipman 9-77

Neg. at Utah State Historic Society

Perspective view of southeast corner

H. 29 Weber Co. 9 of 22  
JAN 31 1978



GREAT WALL



GREAT WALL

274

AMERICAN FOOD

CHINESE DISHES

OPEN

27  
NOV 2 1977

~~X~~ JOAN W. MADDY FRUIT STORE/ WILLIAM GIDDINGS  
PHOTOGRAPHY/ JOHN DAVIS BOARDING HOUSE  
LOWER 25TH STREET HISTORIC DISTRICT

Photo by J. Chipman 9-77

Neg. at Utah State Historic Society

View of south facade

10 of 22

JAN 31 1978  
Walker Co.

PORTER BLOCK

'GRILL TAVERN

*Kings Court*  
MIXERS

NOODLES SHOYU  
TOFU AGE

CAFE  
AMERICAN EAGLE

MI CANTINA

Cool's  
OPEN



PORTER BLOCK/LOUIS WEINBERGER, TAI-  
LOR/WM. KENT, BAKER/LAURENCE BAR-  
SOTTI, CANDY

LOWER 25TH STREET HISTORIC DISTRICT

PHOTO BY J. CHIPMAN, 9-77

NEG. AT UTAH STATE HISTORICAL SOC.

VIEW OF SOUTH FACADE NOV 2 1977

*Webster Co.*

*119 22*



AL DE CORSO  
WE BUY-SELL-TRADE

AL DE CORSO  
USED APPLIANCE

Al De Corso  
USED  
APPLIANCE

Al De Corso  
USED  
FURNITURE

AMERICAN  
EAGLE

RICE NOODLES SHOYU  
TOFU AGE

AMERICAN EAGLE



JAN 31 1978

NOV 2 1977

12122

UNION RESTAURANT/TING KEE CO./  
THE SWITCH/ EUROPEAN LODGINGS  
FRAZZINI BROS. SALOON  
LOWER 25TH STREET HISTORIC DISTRICT  
PHOTO BY J. CHIPMAN 9-77  
NEG. AT UTAH STATE HISTORICAL SOC.  
VIEW OF SOUTH FACADE

W. Co.





ire  
TICS

MAGAZINES  
ED'S  
VARIETY STORE  
SHINE PARLOR

Swan

GRE  
WA

AMERICAN  
FOOD

JAN 31 1978

CITY EMPLOYMENT OFFICE/PALACE BILLIARD  
HALL/ YANARI AND TOMONO POOL HALL  
LOWER 25TH STREET HISTORIC DISTRICT

Photo by J. Chipman 9-77

Neg. at Utah State Historic Society

View of south facade

*Walter G.*  
*H 26*

NOV 2 1977

*13922*



Michigan  
CAFE

9

LONDON ICE CREAM PARLOR/CHICAGO SHOE  
STORE/ BON TON RESTAURANT  
LOWER 25TH STREET HISTORIC DISTRICT  
Photo by J. Chipman 9-77  
Neg. at Utah State Historic Society  
View of south facade

*H. Weber* NOV 2 1977

14922  
JAN 31 1978



1901

STOP  
FOR  
PEDESTRIANS

246

HELP KEEP  
STREETS CLEAN

BOOKING

DAVE'S  
BARBER SHOP

248

JOSEPH ROGERSON RESTAURANT/ J.E.  
DAVENPORT & CO. SALOON  
LOWER 25TH STREET HISTORIC DISTRICT  
Photo by J. Chipman 9-77  
Neg. at Utah State Historic Society  
View of south facade

*Webster Co.*

NOV 2

1977

# 21 JAN 31 1978

15122



ONE WAY

ONE WAY

ERVEZA

Pancho's  
CAFE  
BAR

NICHOLAS  
MARKET

WONDERBREAD

MEXICAN  
FOOD  
OPEN

PASTRY

7

STREETSCAPE SHOWING BOARD OF TRADE  
SALOON/ ZONG PHE BREWING CO.; AND  
WATKINS AND NICHOLAS GROCERS/ EMPIRE  
ROOMING HOUSE

LOWER 25TH STREET HISTORIC DISTRICT

Photo by J. Chipman 9-77

Neg. at Utah Historic Society

View of south facades

16922

# 13 Weber Co.

JAN 31 1978

NOV 2 1977





69

MILNER HOTEL/MARION HOTEL  
LOWER 25TH STREET HISTORIC DISTRICT  
Photo by J. Chipman 9-77  
Neg. at Utah Historical Society  
Perspective view of southeast corner

Weber Co.

17 of 22

#12

JAN 3 1 1978

NOV 2 1977

BEER

100



5

WESTERN BAR/WEBER HOTEL/OKAMURA RESTAURANT  
LOWER 25TH STREET HISTORIC DISTRICT

Photo by J. Chipman 9-77

Neg. at Utah Historical Society

View of south facade

Webster Co.

18 g 22

#10

NOV 2 1977

JAN 31 1978



4

VAN NESS HOTEL/CHARLES IVERSON SALOON/  
JOSEPH BRODY CLOTHING  
LOWER 25TH STREET HISTORIC DISTRICT  
Photo by J. Chipman 9-77

Neg. at Utah Historical Society  
View of south facade

Weber Co.

19922

NOV 2 1977

H. 8  
JAN 3 1 1978



Havana  
CLUB

113



3

CHUNG TOM RESTAURANT/ LOUIS AVONDIT ROOMS/  
BANQUET ROOMING HOUSE & RESTAURANT/U.S.CAFE  
LOWER 25TH STREET HISTORIC DISTRICT

Photo by J. Chipman 9-77

Neg. at Utah Historical Society

View of south facade

Wahner Co.

# 7

NOV 2

1977

20922

JAN 31 1978





2

THE GRAND (HOTEL) / THE ALPINE (HOTEL)  
LOWER 25TH STREET HISTORIC DISTRICT

Photo by J. Chipman 9-77

Neg. at Utah Historical Society

View of south facade

Weber Co.

21 g 22

NOV 2 1977

Site # 6

JAN 31 1978



UNION STATION

FORD

2M 3975

1.

OGDEN UNION STATION

LOWER 25TH STREET HISTORIC DISTRICT

Photo by J. Chipman 9-77

Neg. at Utah Historical Society

Perspective view of front facade from  
southeast.

Weber Co.

22 g22

NOV 2 1977

JAN 3 1 1978