

JOSEPH WOLF BREWERY, 402 SOUTH MAIN (LEFT) & 239 NELSON STREET (RIGHT)
STILLWATER HISTORIC COMMERCIAL DISTRICT
STILLWATER, WASHINGTON CO., MN
PHOTO # 04268-19

JOSEPH WOLF BREWERY, 402 S. MAIN & 239 NELSON ST.
STILLWATER HISTORIC COMMERCIAL DISTRICT
STILLWATER, MN
THOMAS HARVEY
MARCH, 1981

A. V. DEPT., MN. HIST. SOC., 690 CEDAR ST.,
ST. PAUL, MN 55101

LOOKING SE

SITES: #259 & #337, RESPECTIVELY

From the Collection of the
MINNESOTA HISTORICAL SOCIETY

DO NOT REPRODUCE
WITHOUT WRITTEN PERMISSION

JOSEPH WOLF BREWERY OFFICE (L) AND BREWERY BUILDING (R)
414 & 412 S. MAIN
STILLWATER HISTORIC COMMERCIAL DISTRICT
STILLWATER, WASHINGTON CO., MN
PHOTO # 010066-7



JOSEPH WOLF BREWERY OFFICE (L)

! BREWERY BUILDING (R), 414 & 412 S. MAIN

STILLWATER HISTORIC COMMERCIAL DISTRICT
NORENE ROBERTS
STILLWATER, MN

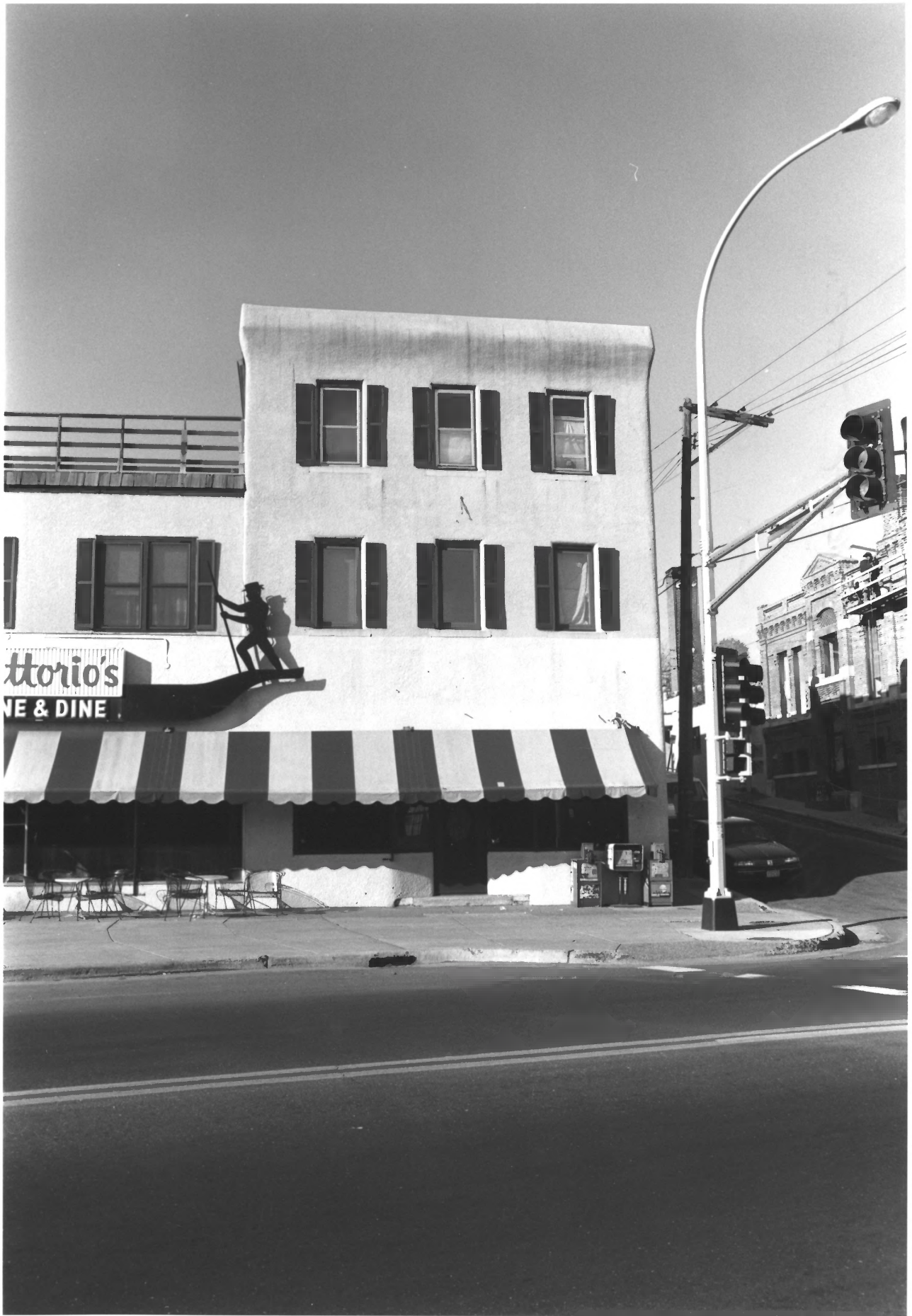
OCTOBER, 1988

A. V. DEPT., 690 CEDAR ST., MN. HIST. SOC.,
ST. PAUL, MN 55101

LOOKING WEST

SITES: #257 & #335, RESPECTIVELY

PACIFIC HOTEL, 402 S. MAIN
STILLWATER HISTORIC COMMERCIAL DISTRICT
STILLWATER, WASHINGTON CO., NY
PHOTO # 0100 66-9



PACIFIC HOTEL
402 S. MAIN, STILLWATER HISTORIC COMMERCIAL
DISTRICT

STILLWATER, MN.
NORENE ROBERTS
OCTOBER, 1988

A.V. DEPT., MINN. HIST. SOC., 690 CEDAR ST.,
ST. PAUL, MN 55101

LOOKING WEST
SITE #259

From the Collection of the
MINNESOTA HISTORICAL SOCIETY

DO NOT REPRODUCE
WITHOUT WRITTEN PERMISSION



(COMMERCIAL BUILDING) 330 S. MAIN
STILLWATER HISTORIC COMMERCIAL DISTRICT
STILLWATER, WASHINGTON CO., MN
PHOTO # 010066 - 11

(COMMERCIAL BUILDING), 330 S. MAIN
STILLWATER HISTORIC COMMERCIAL DISTRICT
STILLWATER, MN
NORENE ROBERTS
OCTOBER, 1988
A.V. DEPT., 690 CEDAR ST., MN. HIST. SOC.,
ST. PAUL, MN 55101
LOOKING NW
SITE #260

From the Collection of the
MINNESOTA HISTORICAL SOCIETY

DO NOT REPRODUCE
WITHOUT WRITTEN PERMISSION



GRAND GARAGE, 324 S. MAIN (NON-CONTRIBUTING)
STILLWATER HISTORIC COMMERCIAL DISTRICT
STILLWATER, WASHINGTON CO., MN
PHOTO # 010066-12

GRAND GARAGE, 324 S. MAIN (NON-CONTRIBUTING)
STILLWATER HISTORIC COMMERCIAL DISTRICT
STILLWATER, MN

NORENE ROBERTS

OCTOBER, 1988

A. U. DEPT., MN. HIST. SOC., 690 CEDAR ST.,
ST. PAUL, MN 55101

LOOKING WEST

SITE #261

From the Collection of the
MINNESOTA HISTORICAL SOCIETY

DO NOT REPRODUCE
WITHOUT WRITTEN PERMISSION



UNION BLOCK, FROM LEFT: 312, 310 (NON-CONTRIBUTING), 308, & 302 S. MAIN ST.
STILLWATER, HISTORIC COMMERCIAL DISTRICT
STILLWATER, WASHINGTON CO., MAINE
PHOTO # 010066-13

UNION BLOCK, FROM LEFT: 312, 310, 308 & 302 S. MAIN ST.
STILLWATER HISTORIC COMMERCIAL DISTRICT
STILLWATER, MN
NORENE ROBERTS
OCTOBER, 1988

A. U. DEPT., 690 CEDAR ST., MN. HIST. SOC.,
ST. PAUL, MN 55101

LOOKING NW

SITES: # 262, # 263 (NON-CONTRIBUTING), # 264, & 265, RESPECTIVELY



NORTHERN STATES POWER DIVISION OFFICES, 236 S. MAIN
STILLWATER HISTORIC COMMERCIAL DISTRICT
STILLWATER, WASHINGTON CO., MN
PHOTO # 010066-17

NORTHERN STATES POWER DIVISION OFFICES, 236 S. MAIN,
STILLWATER HISTORIC COMMERCIAL DISTRICT
STILLWATER, MN.

NORENE ROBERTS

OCTOBER, 1988

A.V. DEPT., MN. HIST. SOC., 690 CEDAR ST.,
ST. PAUL, MN 55101

LOOKING N.W.

SITE #266



(COMMERCIAL BUILDING) 232 S. MAIN (NON-CONTRIBUTING)
STILLWATER HISTORIC COMMERCIAL DISTRICT
STILLWATER, WASHINGTON CO., MN
PHOTO # 010066-18

(COMMERCIAL BLDG.) 232 S. MAIN (NON CONTRIB)

STILLWATER HISTORIC COMMERCIAL DISTRICT

STILLWATER, MN

NORENE ROBERTS

OCTOBER, 1988

A. U. DEPT., MN HIST SOC, 690 CEDAR ST.,

ST. PAUL, MN 55101

LOOKING WEST

SITE #267

From the Collection of the
MINNESOTA HISTORICAL SOCIETY

DO NOT REPRODUCE
WITHOUT WRITTEN PERMISSION



(COMMERCIAL BLDG.) LEFT: 224 S. MAIN ST., RIGHT: 214-218 S. MAIN ST.
STILLWATER HISTORIC COMMERCIAL DISTRICT
STILLWATER, WASHINGTON CO., MN
PHOTO # 010066-22

COMMERCIAL BUILDINGS, 22A & 214-218 S. MAIN ST.
STILLWATER HISTORIC COMMERCIAL DISTRICT
STILLWATER, MN.

NORENE ROBERTS

OCTOBER, 1988

A. V. DEPT., MN. HIST. SOC., 690 CEDAR ST.,
ST. PAUL, MN 55101

LOOKING WEST

SITES: # 269 & # 270, RESPECTIVELY



(COMMERCIAL BUILDING) 204 S. MAIN
STILLWATER HISTORIC COMMERCIAL DISTRICT
STILLWATER, WASHINGTON CO., MN
PHOTO# 010067#3

(COMMERCIAL BUILDING) 204 S. MAIN
STILLWATER HISTORIC COMMERCIAL DISTRICT
STILLWATER, MN
NORENE ROBERTS
OCTOBER, 1988
A. V. DEPT., MN. HIST. SOC., 690 CEDAR ST.,
ST. PAUL, MN 55101
LOOKING WEST
SITE # 273

From the Collection of the
MINNESOTA HISTORICAL SOCIETY

DO NOT REPRODUCE
WITHOUT WRITTEN PERMISSION



(COMMERCIAL BUILDING) 132 S. MAIN (NON-CONTRIBUTING)
STILLWATER HISTORIC COMMERCIAL DISTRICT
STILLWATER, WASHINGTON CO., MN
PHOTO # 010067-4

(COMMERCIAL BUILDING) 132 S. MAIN (NON-CONTRIB.)
STILLWATER HISTORIC COMMERCIAL DISTRICT
STILLWATER, MN

NORENE ROBERTS

OCTOBER, 1988

A. V. DEPT, MN. HIST. SOC., 690 CEDAR ST.,
ST. PAUL, MN 55101

LOOKING NW

SITE #274



JOSEPH WOLF CO. BUILDING, 102 S. MAIN
STILLWATER HISTORIC COMMERCIAL DISTRICT
STILLWATER, WASHINGTON CO., MN
PHOTO # 010067-9

JOSEPH WOLF CO. BLDG., 102 S. MAIN,
STILLWATER HISTORIC COMMERCIAL DISTRICT
STILLWATER, MN
NORENE ROBERTS
OCTOBER, 1988

A.V. DEPT., MN. HIST. SOC., 690 CEDAR ST.,
ST. PAUL, MN 55101

LOOKING N.W.
SITE #279

From the Collection of the
MINNESOTA HISTORICAL SOCIETY

DO NOT REPRODUCE
WITHOUT WRITTEN PERMISSION



MCKUSICK BLOCK, 102-106 N. MAIN (NON CONTRIBUTING)
STILLWATER HISTORIC COMMERCIAL DISTRICT
STILLWATER, WASHINGTON CO., MN
PHOTO # 010067-10

MC KUSICK BLOCK, 102-106 N. MAIN, (NON-contributing)
STILLWATER HISTORIC COMMERCIAL DISTRICT
STILLWATER, MN
NORENE ROBERTS
OCTOBER, 1989

A. V. DEPT., MN. HIST. SOC., 690 CEDAR ST.,
ST. PAUL, MN 55101

LOOKING N.W.

SITE # 282

From the Collection of the
MINNESOTA HISTORICAL SOCIETY

DO NOT REPRODUCE
WITHOUT WRITTEN PERMISSION



EXCESIOR BLOCK, 118-126 N. MAIN
STILLWATER HISTORIC COMMERCIAL DISTRICT
STILLWATER, WASHINGTON CO., MN
PHOTO# 010070-10

EXCESIOR BLOCK, 118-126 N. MAIN
STILLWATER HISTORIC COMMERCIAL DISTRICT
STILLWATER, MN.

NORENE ROBERTS

OCTOBER, 1988

A.V. DEPT, MN. HIST. SOC. 690 CEDAR ST.,
ST. PAUL, MN 55101

LOOKING WEST

SITE # 286

From the Collection of the
MINNESOTA HISTORICAL SOCIETY

DO NOT REPRODUCE
WITHOUT WRITTEN PERMISSION



EAST SIDE OF SOUTH MAIN ST., FROM EAST OLIVE
STILLWATER HISTORIC COMMERCIAL DISTRICT
STILLWATER, WASHINGTON CO., MN
PHOTO # 010282 - 10

EAST SIDE OF SOUTH MAIN ST., FROM EAST OLIVE
STILLWATER HISTORIC COMMERCIAL DISTRICT
STILLWATER, MN

NORENE ROBERTS

AUGUST, 1989

A.V. DEPT., MN. HIST. SOC., 690 CEDAR ST.,
ST. PAUL, MN 55101

LOOKING NE

From the Collection of the
MINNESOTA HISTORICAL SOCIETY

DO NOT REPRODUCE
WITHOUT WRITTEN PERMISSION



SMITHSON PAPER BOX CO., 323 S. MAIN
STILLWATER HISTORIC COMMERCIAL DISTRICT
STILLWATER, WASHINGTON CO., MN
PHOTO I.D. # 010068-17

SMITHSON PAPER BOX CO. BLDG.,
323 SOUTH MAIN, STILLWATER HISTORIC COMMERCIAL
DISTRICT

STILLWATER, MN

NORENE ROBERTS

OCTOBER, 1988

A.V. DEPT., MN. HIST. SOC., 690 CEDAR ST.,
ST. PAUL, MN 55101

LOOKING N.E.

SITE #302

From the Collection of the
MINNESOTA HISTORICAL SOCIETY

DO NOT REPRODUCE
WITHOUT WRITTEN PERMISSION



EAST SIDE OF SOUTH MAIN ST., FROM EAST NELSON
STILLWATER HISTORIC COMMERCIAL DISTRICT
STILLWATER, WASHINGTON CO., MN
PHOTO # 010282-11

EAST SIDE OF SOUTH MAIN ST., FROM EAST NELSON
STILLWATER HISTORIC COMMERCIAL DISTRICT
STILLWATER, MN.

NORENE ROBERTS

AUGUST, 1989

A.V. DEPT., MN. HIST. SOC., 690 CEDAR ST.,
ST. PAUL, MN. 55101

LOOKING NE

From the Collection of the
MINNESOTA HISTORICAL SOCIETY

DO NOT REPRODUCE
WITHOUT WRITTEN PERMISSION



SIMONET FURNITURE : CARPET CO., BLDG., 301 S. MAIN
STILLWATER HISTORIC COMMERCIAL DISTRICT
STILLWATER, WASHINGTON CO., MN
PHOTO # 010068-20

SIMONET'S FURNITURE ; CARPET CO. BLDG.,
301 S. MAIN, STILLWATER HISTORIC
COMMERCIAL DISTRICT

STILLWATER, MN.

NORENE ROBERTS

OCTOBER, 1988

A.V. DEPT., MN. HIST. SOC., 690 CEDAR ST.,
ST. PAUL, MN 55101

LOOKING EAST
SITE # 305

From the Collection of the
MINNESOTA HISTORICAL SOCIETY

DO NOT REPRODUCE
WITHOUT WRITTEN PERMISSION

(COMMERCIAL BUILDING), 227 S. MAIN
STILLWATER HISTORIC COMMERCIAL DISTRICT
STILLWATER, WASHINGTON CO., NY
PHOTO # 010069-2



(COMMERCIAL BLDG), 227 S. MAIN, STILLWATER
HISTORIC COMMERCIAL DISTRICT

STILLWATER, MN
NORENE ROBERTS

OCTOBER, 1988

A.V. DEPT., MN. HIST. SOC., 690 CEDAR ST.,
ST. PAUL, MN 55101

LOOKING EAST
SITE # 310

From the Collection of the
MINNESOTA HISTORICAL SOCIETY

DO NOT REPRODUCE
WITHOUT WRITTEN PERMISSION

(COMMERCIAL BUILDING) 223 S. MAIN
STILLWATER HISTORIC COMMERCIAL DISTRICT
STILLWATER, WASHINGTON CO., MN
PHOTO # 010069-3

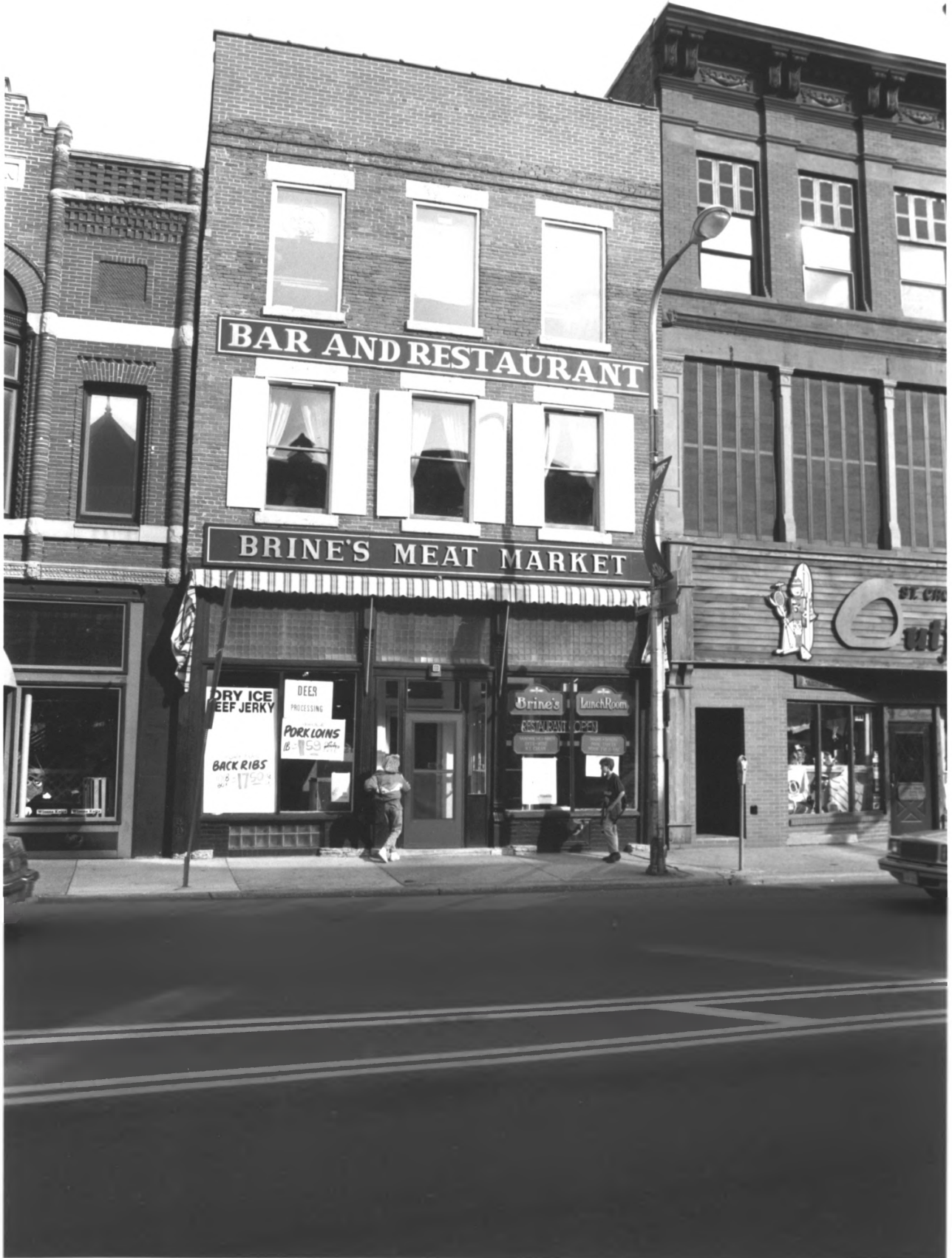


(COMMERCIAL BLDG) 223 S. MAIN
STILLWATER HISTORIC COMMERCIAL DISTRICT
STILLWATER, MN
NORENE ROBERTS
OCTOBER, 1988
A.V. DEPT., MN HIST. SOC., 690 CEDAR ST.,
ST. PAUL, MN 55101
LOOKING EAST
SITE # 311

From the Collection of the
MINNESOTA HISTORICAL SOCIETY

DO NOT REPRODUCE
WITHOUT WRITTEN PERMISSION

(COMMERCIAL BUILDING), 219 S. MAIN
STILLWATER HISTORIC COMMERCIAL DISTRICT
STILLWATER, WASHINGTON CO., MN
PHOTO # 010069-4



(COMMERCIAL BLDG), 219 S. MAIN,
STILLWATER HISTORIC COMMERCIAL DISTRICT

STILLWATER, MN
NORENE ROBERTS

OCTOBER, 1988

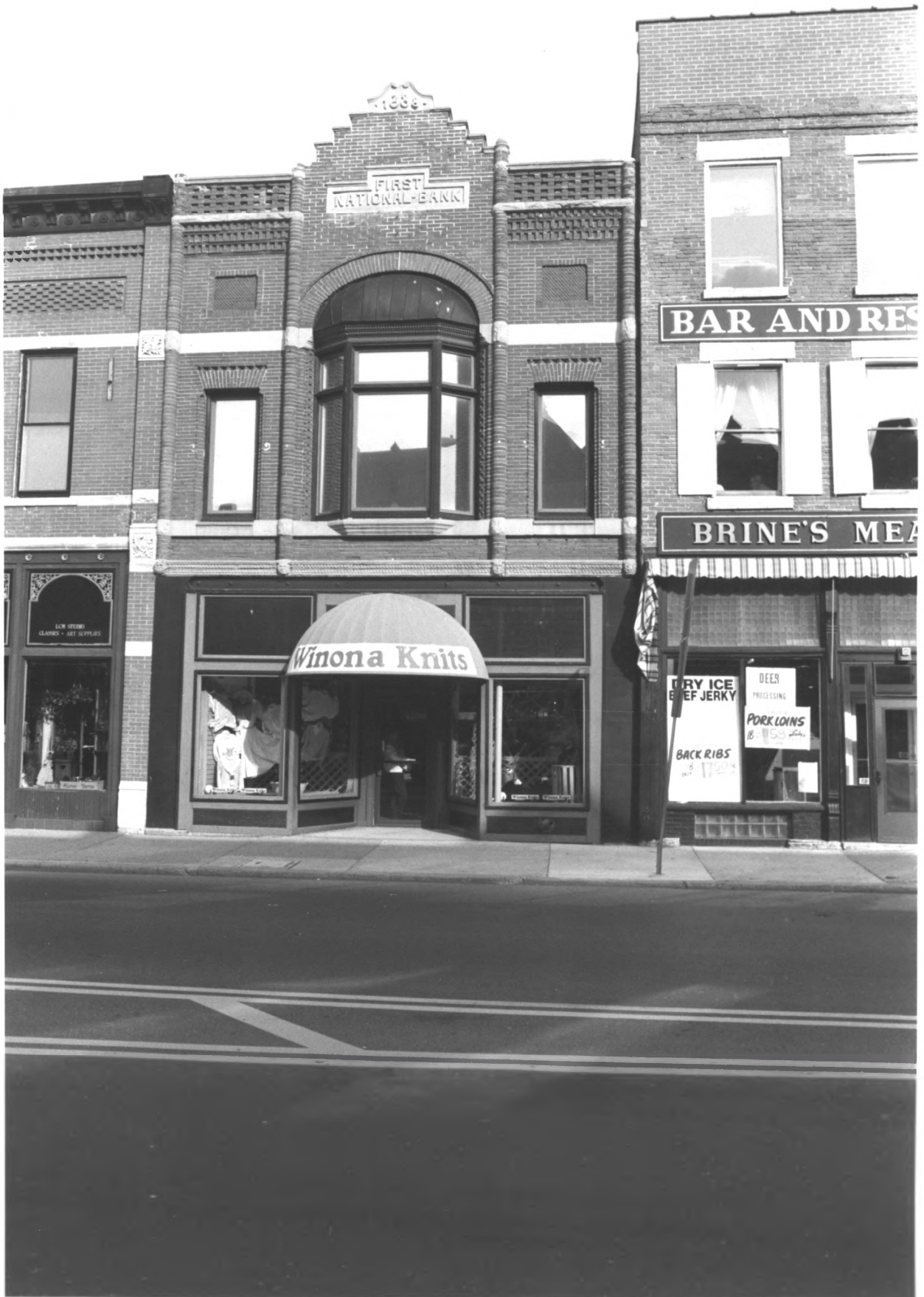
A.V. DEPT., MN. HIST. SOC., 690 CEDAR ST.,
ST. PAUL, MN 55101

LOOKING EAST
SITE #312

From the Collection of the
MINNESOTA HISTORICAL SOCIETY

DO NOT REPRODUCE
WITHOUT WRITTEN PERMISSION

FIRST NATIONAL BANK BUILDING, 215 S. MAIN
STILLWATER HISTORIC COMMERCIAL DISTRICT
STILLWATER WASHINGTON CO, MN
PHOTO # 010069-5



FIRST NATIONAL BANK BLDG., 215 S. MAIN
STILLWATER HISTORIC COMMERCIAL DISTRICT
STILLWATER, MN
NORENE ROBERTS
OCTOBER, 1988
A. V. DEPT., MN. HIST. SOC. 690 CEDAR ST.
ST. PAUL, MN 55101
LOOKING EAST
SITE #313

From the Collection of the
MINNESOTA HISTORICAL SOCIETY

DO NOT REPRODUCE
WITHOUT WRITTEN PERMISSION



REED'S BLOCK, 201 S. MAIN (NON-CONTRIBUTING)
STILLWATER HISTORIC COMMERCIAL DISTRICT
STILLWATER, WASHINGTON CO., MN
PHOTO* 010069#7

REED'S BLOCK, 201 S. MAIN (NON-CONT'IB)
STILLWATER HISTORIC COMMERCIAL DISTRICT
STILLWATER, MN
NORENE ROBERTS
OCTOBER, 1988

A. V. DEPT, MN. HIST. SOC., 690 CEDAR ST.,
ST. PAUL, MN 55701

LOOKING EAST
SITE #315

From the Collection of the
MINNESOTA HISTORICAL SOCIETY

DO NOT REPRODUCE
WITHOUT WRITTEN PERMISSION



EAST SIDE OF SOUTH MAIN ST., FROM LEFT: 119, 125, 127, & 129 S. MAIN ST.
STILLWATER HISTORIC COMMERCIAL DISTRICT
STILLWATER, WASHINGTON CO., MN
PHOTO # 010282-8

EAST SIDE, SOUTH MAIN ST., FROM LEFT: 119, 125, 127, & 129 S. MAIN.
STILLWATER HISTORIC COMMERCIAL DISTRICT
STILLWATER, MN
NORENE ROBERTS

AUGUST, 1989

A.V. DEPT., MN. HIST. SOC., 690 CEDAR ST.,
ST. PAUL, MN 55101

LOOKING NE

SITES: #320, #319, #318, & #317, RESPECTIVELY



STAPLES BLOCK, 119 S. MAIN ST. (AT LEFT: 101 S. MAIN, NON-CONTRIBUTING)
STILLWATER HISTORIC COMMERCIAL DISTRICT
STILLWATER, WASHINGTON CO., MN
PHOTO # 010069-12

STAPLES BLOCK, 119 SOUTH MAIN
STILLWATER HISTORIC COMMERCIAL DISTRICT

STILLWATER, MN

NORENE ROBERTS

OCTOBER, 1988

A.V. DEPT. MN. HIST. SOC., 690 CEDAR ST.,
ST. PAUL, MN 55101

LOOKING EAST

SITE # 320

(BUILDING AT LEFT: 101 S. MAIN ST, SITE # 321,
NON-CONTRIBUTING)

MOSIER BROTHERS BLOCK, 129 S. MAIN
STILLWATER HISTORIC COMMERCIAL DISTRICT
STILLWATER, WASHINGTON CO., NY
PHOTO # 010069-9



MOSIER BROS. BLOCK, 129 SOUTH MAIN
STILLWATER HISTORIC COMMERCIAL DISTRICT
STILLWATER, MN.

NORENE ROBERTS

OCTOBER, 1988

A.V. DEPT., MN. HIST. SOC., 690 CEDAR ST.,
ST. PAUL, MN 55101

LOOKING NE

SITE #317

From the Collection of the
MINNESOTA HISTORICAL SOCIETY

DO NOT REPRODUCE
WITHOUT WRITTEN PERMISSION



BARN & STORAGE BUILDING, 211½ - 239 E. NELSON
STILLWATER HISTORIC COMMERCIAL DISTRICT
STILLWATER, WASHINGTON CO., MN
PHOTO # 010282-5

BARN; STORAGE BUILDING, 211 $\frac{1}{2}$; 239 E. NELSON

STILLWATER HISTORIC COMMERCIAL DISTRICT

STILLWATER, MN

NORENE ROBERTS

AUGUST, 1989

A.N. DEPT., MN HIST SOC., 690 CEDAR ST., ST. PAUL, MN 55101

LOOKING SW

SITES: #336 & #337, RESPECTIVELY

From the Collection of the
MINNESOTA HISTORICAL SOCIETY

DO NOT REPRODUCE
WITHOUT WRITTEN PERMISSION



LOWELL PARK & PAVILION
STILLWATER HISTORIC COMMERCIAL DISTRICT
STILLWATER, WASHINGTON CO., MN
PHOTO # 010044-1

LOWELL PARK AND PAVILLION, RIVERFRONT,
STILLWATER HISTORIC COMMERCIAL DISTRICT

STILLWATER, MN

NORENE ROBERTS

APRIL, 1989

A.V. DEPT., MINN. HIST. SOC., 690 CEDAR ST.,
ST. PAUL, MN 55101

LOOKING SE

SITE #325

From the Collection of the
MINNESOTA HISTORICAL SOCIETY

DO NOT REPRODUCE
WITHOUT WRITTEN PERMISSION



TEPASS BLOCK, 223 E. CHESTNUT
STILLWATER HISTORIC COMMERCIAL DISTRICT
STILLWATER, WASHINGTON CO., MN
PHOTO # 010070-3

TEPASS BLOCK, 223 E. CHESTNUT
STILLWATER HISTORIC COMMERCIAL DISTRICT
STILLWATER, MN
NORENE ROBERTS
OCTOBER, 1988
A. V. DETT, MN. HIST. SOC., 690 CEDAR ST.,
ST. PAUL, MN 55101
LOOKING SE
SITE #281

From the Collection of the
MINNESOTA HISTORICAL SOCIETY

DO NOT REPRODUCE
WITHOUT WRITTEN PERMISSION



BANK ADDITION, 213 E. CHESTNUT. (NON-CONTRIBUTING)
STILLWATER HISTORIC COMMERCIAL DISTRICT
STILLWATER, WASHINGTON CO., MN
PHOTO # 010063-14

ADDITION TO BANK, 213 E. CHESTNUT (NON-CONTRIBUTING)
STILLWATER, MN
STILLWATER HISTORIC COMMERCIAL DISTRICT
NORENE ROBERTS

OCTOBER, 1988

A. V. DEPT., MN. HIST. SOC., 690 CEDAR ST.,
ST. PAUL, MN 55101

LOOKING EAST

SITE # 23A

From the Collection of the
MINNESOTA HISTORICAL SOCIETY

DO NOT REPRODUCE
WITHOUT WRITTEN PERMISSION



OLD FEDERAL BUILDING, 220 E. MYRTLE
STILLWATER HISTORIC COMMERCIAL DISTRICT
STILLWATER, WASHINGTON CO., MN
DATA # A10065 - 22

OLD FEDERAL BLDG., 220 E. MYRTLE,
STILLWATER HISTORIC COMMERCIAL DISTRICT
STILLWATER, MN.

NORENE ROBERTS

OCTOBER, 1988

A.V. DEPT, MINN. HIST. SOC., 690 CEDAR ST.,
ST. PAUL, MN. 55101

LOOKING NORTH
SITE #225

From the Collection of the
MINNESOTA HISTORICAL SOCIETY

DO NOT REPRODUCE
WITHOUT WRITTEN PERMISSION



H.C. FARMER SUNKEN GARDEN FOUNTAIN, 113 N. SECOND
STILLWATER HISTORIC COMMERCIAL DISTRICT
STILLWATER, WASHINGTON CO., MN
PHOTO # 010065-20

H.C. FARMER SUNKEN GARDEN; FOUNTAIN 113 N. SECOND
STILLWATER HISTORIC COMMERCIAL DISTRICT
STILLWATER, MN

NORENE ROBERTS

OCTOBER, 1988

A.U. DEPT. MN. HIST. SOC., 690 CEDAR ST.,
ST. PAUL, MN 55101

LOOKING EAST

SITE #22A

From the Collection of the
MINNESOTA HISTORICAL SOCIETY

DO NOT REPRODUCE
WITHOUT WRITTEN PERMISSION



CONNOLLY SHOE CO. BLDG., 123 N. SECOND
STILLWATER HISTORIC COMMERCIAL DISTRICT
STILLWATER, WASHINGTON CO., MN
PHOTO # 010065 - 18

CONNOLLY SHOE CO. BLDG., 123 N. SECOND
STILLWATER HISTORIC COMMERCIAL DISTRICT
STILLWATER, MN.

NORENE ROBERTS

OCTOBER, 1988

A. V. DEPT., MINN. HIST. SOC., 690 CEDAR ST.,
ST. PAUL, MN 55101

LOOKING N. E.

SITE #223



LOWELL INN, 102 N. SECOND
STILLWATER HISTORIC COMMERCIAL DISTRICT
STILLWATER, WASHINGTON CO., MN
PHOTO # 010065-16

LOWELL INN, 102 N. SECOND
STILLWATER HISTORIC COMMERCIAL DISTRICT
STILLWATER, MN
NORENE ROBERTS
OCTOBER, 1988
A. V. DEPT., MN HIST SOC., 690 CEDAR ST.,
ST. PAUL, MN 55101

LOOKING WEST
SITE # 221

From the Collection of the
MINNESOTA HISTORICAL SOCIETY

DO NOT REPRODUCE
WITHOUT WRITTEN PERMISSION



JASSOY BLOCK, 200 S. THIRD
STILLWATER, HISTORIC COMMERCIAL DISTRICT
STILLWATER, WASHINGTON CO., MN
PHOTO # 010065-6

JASSOY BLOCK, 200 S. THIRD
STILLWATER HISTORIC COMMERCIAL DISTRICT
STILLWATER, MN

NORENE ROBERTS

OCTOBER, 1988

A. V. DETT, MN. HIST. SOC., 640 CEDAR ST., ST. PAUL,
MN 55101

LOOKING WEST

SITE #212

From the Collection of the
MINNESOTA HISTORICAL SOCIETY

DO NOT REPRODUCE
WITHOUT WRITTEN PERMISSION



LUMBERMAN'S EXCHANGE, 113-121 S. WATER
STILLWATER HISTORIC COMMERCIAL DISTRICT
STILLWATER, WASHINGTON CO., MN
PHOTO # 010044-5

LUMBERMAN'S EXCHANGE, 113-121 S. WATER 010044-5
STILLWATER HISTORIC COMMERCIAL DISTRICT

STILLWATER, MN.

NORENE ROBERTS

APRIL, 1989

A.V. DEPT., MINN. HIST. SOC., 690 CEDAR ST.,
ST. PAUL, MN. 55101

LOOKING NW
SITE #328

From the Collection of the
MINNESOTA HISTORICAL SOCIETY

DO NOT REPRODUCE
WITHOUT WRITTEN PERMISSION



(HOOLEY'S MARKET) 127 S. WATER (NON-CONTRIBUTING)
STILLWATER HISTORIC COMMERCIAL DISTRICT
STILLWATER, WASHINGTON CO., MN
PHOTO # 010044-4

HOOLEY'S MARKET, 127 SO. WATER, (NON-CONTIG)
STILLWATER HISTORIC COMMERCIAL DISTRICT
STILLWATER, MN.

NORENE ROBERTS

APRIL, 1989

A.V. DEPT., MINN. HIST. SOC., 690 CEDAR ST,
ST. PAUL, MN. 55101

LOOKING S.W.

SITE # 327

From the Collection of the
MINNESOTA HISTORICAL SOCIETY

DO NOT REPRODUCE
WITHOUT WRITTEN PERMISSION