

202

MAR 03 2010

United States Department of the Interior
National Park Service

National Register of Historic Places
Registration Form



This form is for use in nominating or requesting determinations for individual properties and districts. See instructions in *How to Complete the National Register of Historic Places Registration Form* (National Register Bulletin 16A). Complete each item by marking "x" on the appropriate line or by entering the information requested. If an item does not apply to the property being documented, enter "N/A" for "not applicable." For functions, architectural classification, materials, and areas of significance, enter only categories and subcategories from the instructions. Place additional entries and narrative items on continuation sheets (NPS Form 10-900a). Use a typewriter, word processor, or computer, to complete all items.

1. Name of Property

historic name PEOPLES NATIONAL BANK
other names/site number People's Trust Co., People's Bank for Savings, Pella City Hall

2. Location

street & number 717 Main Street N/A not for publication
city or town Pella N/A vicinity
state Iowa code IA county Marion code 125 zip code 50219

3. State/Federal Agency Certification

As the designated authority under the National Historic Preservation Act, as amended, I hereby certify that this (nomination request for determination of eligibility) meets the documentation standards for registering properties in the National Register of Historic Places and meets the procedural and professional requirements set forth in 36 CFR Part 60. In my opinion, the property (meets does not meet) the National Register criteria. I recommend that this property be considered significant (nationally statewide locally). (See continuation sheet for additional comments.)
Raymond O. Mitchell DSHD March 3, 2010
Signature of certifying official Title Date
STATE HISTORICAL SOCIETY OF IOWA
State or Federal agency and bureau

In my opinion, the property (meets does not meet) the National Register criteria. (See continuation sheet for additional comments.)
Signature of certifying official/Title Date
State or Federal agency and bureau

4. National Park Service Certification

- I hereby certify that the property is:
- entered in the National Register.
 - See continuation sheet.
- determined eligible for the National Register
 - See continuation sheet
- determined not eligible for the National Register
- removed from the National Register.
- Other, (Explain)

Edson H. Beall Signature of Keeper Date of Action 4-21-10

Peoples National Bank
Name of Property

Marion County, Iowa
County and State

5. Classification

Ownership of Property (Check as many lines as apply)
Category of Property (Check only one line)

- | | |
|---|---|
| <input checked="" type="checkbox"/> private | <input checked="" type="checkbox"/> building(s) |
| <input type="checkbox"/> public-local | <input type="checkbox"/> district |
| <input type="checkbox"/> public-State | <input type="checkbox"/> site |
| <input type="checkbox"/> public-Federal | <input type="checkbox"/> structure |
| | <input type="checkbox"/> object |

Number of Resources within Property
(Do not include previously listed resources in the count.)

Contributing	Noncontributing	
1		buildings
		sites
		structures
2		objects
3		Total

Name of related multiple property listing
(Enter "N/A" if property is not part of a multiple property listing)

**Number of contributing resources
previously listed in the National Register**

N/A

N/A

6. Function or Use

Historic Functions
(Enter categories from instructions)

COMMERCE/TRADE/financial institution
INDUSTRY/PROCESSING/EXTRACTION/communications facility
GOVERNMENT/city hall

Current Functions
(Enter categories from instructions)

VACANT/NOT IN USE

7. Description

Architectural Classification
(Enter categories from instructions)

LATE 19TH & 20TH CENTURY REVIVALS/
Classical Revival

Materials
(Enter categories from instructions)

foundation Brick
walls Brick
roof Asphalt
other Concrete

Narrative Description

(Describe the historic and current condition of the property on one or more continuation sheets.)

United States Department of the Interior
National Park Service

NATIONAL REGISTER OF HISTORIC PLACES CONTINUATION SHEET

Section number 7 Page 1

CFN-259-1116

Peoples National Bank, Marion County, IA.

Constructed in 1905, the Peoples National Bank is a masonry, 2-story building with full basement, originally constructed for multiple commercial purposes. The City of Pella purchased this building in 1917 and converted it for use as a city hall, a purpose it served until 2007, when the city relocated its offices. In 2008, the city sold the Peoples National Bank to a private party. Today, the building is poised for adaptive reuse and rehabilitation.

The surroundings of Peoples National Bank are densely built-up with commercial improvements. The 500 block of Main Street is situated one block to the south of Pella's Central Park (or public square) and forms an extension of the city's central business district. Commercial buildings line both sides of the block. The Molengracht, a recently constructed shopping mall and hotel, stands on the northeast intersection of Main and Liberty Streets directly across from the property.

EXTERIOR

The footprint of the Peoples National Bank measures approximately 35 x 160 feet, the narrower dimension forming the front façade. The building rests on a brick foundation.

Walls and Roof

The east elevation of the building is its most developed architectural expression and features a symmetrical arrangement of bays. The first floor possesses three bays, with a large window in the central bay flanked by a window on the north and the main entrance on the south. The second floor possesses two bays, each with a pair of windows. The basement podium repeats the pattern of bays on the first floor.

The east elevation features a symmetrical placement of bays, a belt course separating the basement podium and the first floor, arches with keystones over two windows on the first floor, and the suggestion of pilasters on each end of the second floor created by the balance of the wall being inset from the plane of the façade.

Cast concrete is used extensively and includes the belt course between the basement and first floor, window sills, arched lintels on the first floor and plain lintels on the second floor, and bulkheads flanking the flight of steps to the main entrance. Two horizontal rows of decorative patterns worked in white-glazed brick surmount the second floor windows.

United States Department of the Interior
National Park Service

NATIONAL REGISTER OF HISTORIC PLACES

CONTINUATION SHEET

Section number 7 Page 2

CFN-259-1116

Peoples National Bank, Marion County, IA.

Some changes have occurred at the top of the east elevation. A 1930 photograph of the building shows a pressed metal cornice surmounting the second floor. (See Continuation Sheet 28.) This cornice was removed following World War II.

The east façade and the secondary façades of the building are clad with different types of brick. On the east façade, the basement podium is faced with beige, light brown, and grayish beige-colored brick. The first and second floors on the east façade are faced with orangish red-color brick. The podium on the north and west elevations features dark beige, light purple, and dark purple mottled-colored brick. The balance of the north and west walls are of orange-colored brick. The basement podium and the first floor of the south elevation are not visible because of the adjoining commercial building. The mortar throughout the building is of light beige color. The source of the face brick used for the east façade and the basement podium on the north and west elevations remains unknown.

A horizontal repair is visible on the brick across the west elevation of the building between the first and second floors. A balcony and fire escape stood at one time in this area. Perhaps the repair, in light brown brick, fixed some damage when they were removed.

The orange-colored common brick on the north, west, and south walls was manufactured locally at the Pella Drain and Tile Company. The bright orange color and soft consistency of this brick—known locally as “Pella brick”—are its notable characteristics. Herman Rietveld served as the manager of this company and subsequently bought it. The Pella Opera House at 611 Franklin Street (NRHP, 1992) is another documented example of Pella brick. Its color, density, and texture match that of the Peoples National Bank. Because Rietveld’s operation lacked the equipment to manufacture high-fired brick, the face brick for the front façade of the bank building must have originated from another source.

The roof of the Peoples National Bank is flat, low pitched from east to west, and clad with modern membrane covering.

Doors and Fenestration

There are four outside doors to the building. The main entrance is situated in the south bay on the east façade. This entrance is raised about three feet above grade. A flight of five concrete steps, flanked by cast concrete bulkheads, provides the access to this door. The door itself is of solid oak,

United States Department of the Interior
National Park Service

NATIONAL REGISTER OF HISTORIC PLACES
CONTINUATION SHEET

Section number 7 Page 3

CFN-259-1116

Peoples National Bank, Marion County, IA.

with a large, oval window, surmounted by two transoms. An historic photograph of the building shows "City Hall/Clerks Office" painted on the lower transom.

The cast concrete figures of two recumbent dogs flank the steps to the main door. Each is counted as an object and a contributing resource in this nomination. The dog on the left is awake and alert. The dog on the right is asleep. These large figures are the subject of local lore. Legend has it that an elderly bank patron took these two dogs everywhere with him. While he did business, one dog slept, while the other kept watch, and vice-a-versa. The source of these cast concrete sculptures is unknown. Ask anyone in Pella today where the dogs are, and they know. When the City of Pella relocated to its new offices, a public debate ensued concerning these dogs. Some wanted the sculptures relocated to the new location. Others wanted the dogs to remain at their original site. The latter prevailed.

A secondary entrance is situated in a basement well on the east elevation of the building. A flight of four outside steps leads down from the public right-of-way to enter the door. The present door and its flanking sidelights are modern replacements.

The third outside door is situated at grade at the west end of the building. It provides access to the basement.

The fourth door is situated on the second floor of the west elevation near its south corner. Fire insurance maps show that an outside flight of steps provided at one time the access to this door from grade, but these steps have been removed. Today, a makeshift platform projects from the threshold of the door, supported by metal braces attached to the building.

The building's fenestration varies in design. On the east façade, the basement features one window with 1/1 double-hung wood sash. The first floor features one large, fixed window surmounted with a transom. The second floor features two sets of paired windows with 1/1 double-hung wood sash. The north elevation features ranks of windows in the basement, first floor, and second floor. Nine windows are situated in the basement with cast concrete lintels and openings now clad with cover-up materials. Eight windows are situated on the first floor. They feature cast concrete lintels and sills and 1/1 double-hung wood sash. The four windows on the west end of this rank are taller than the other five. Ten windows are situated on the second floor. They feature cast concrete lintels and sills and 1/1 double-hung sash windows. These windows are arranged so that each room on the second floor receives natural light. The west elevation features two windows in the basement, two windows on the first floor, and one window on the second floor. All of these windows are of wood and feature 1/1 double-hung sash. Although they are now clad with cover-up materials, the original sash

United States Department of the Interior
National Park Service

NATIONAL REGISTER OF HISTORIC PLACES
CONTINUATION SHEET

Section number 7 Page 4

CFN-259-1116

Peoples National Bank, Marion County, IA.

remain extant underneath them. There is only one window on the south elevation because that elevation is shared with another building. The one window is on the second floor and features 1/1 double-hung sash of wood.

The basement rises about four feet above grade and possesses a high ceiling as a result. This height is unusual among commercial buildings in Pella. The basement was originally intended to house printing equipment, and the high basement ceiling allowed for the placement of windows above grade to flood natural light into the room for the benefit of the pressmen. This equipment included a printing press, typesetter, and a gasoline engine. The engine powered the press and the other machinery necessary to publish the *Baptist Record* and the *Pella Chronicle* and to operate the building's electric lights and fans. (*Ibid.*, October 18, 1905) The basement's concrete floor provided a solid and stable base for this heavy equipment. Printing plants are often situated in basements for this reason.

A flagpole rises about 15 feet from the roof of the building and is centered on the east façade. The preservation of this flagpole is strongly encouraged, as it originally announced the allegiance of this ethnic community to the United States.

Historic Image

At the time of the building's completion, the *Pella Chronicle* published a photograph of a crowd in front of the building gathered to participate in a real estate sale. (*Ibid.*, November 9, 1905) (See Continuation Sheet 25.) The existence of this historic image, although somewhat blotchy, documents the appearance of the Peoples National Bank soon after its completion. The photo clearly shows a sign reading "Peoples National Bank" stretching across the front façade of the building between the first and second floors. This was an early use of photography for the *Chronicle*, prompted perhaps in part because the photo pictured the newspaper's new home.

INTERIOR

First Floor

One gains access to the first floor through the main entrance of the building and a flight of steps to a vestibule. From this vestibule another flight of stairs leads to the second floor and a door on the north leads to the first floor proper. A walk-in vault is located about midway down the south side of

United States Department of the Interior
National Park Service

NATIONAL REGISTER OF HISTORIC PLACES
CONTINUATION SHEET

Section number 7 Page 5

CFN-259-1116

Peoples National Bank, Marion County, IA.

the first floor. The east and north walls of this vault are of brick with a white glazed finish. The vault door and door surround are of steel. The vault door features a small landscape painting situated at eye-level. Pilasters surmounted by a broken arched pediment flank this door. The staircase to the basement is situated adjacent to the vault's east wall.

The first floor is richly embellished with oak woodwork, which retains its original natural finishes. This woodwork includes baseboards, paneled wainscoting, 6-panel doors surmounted by transoms, and door and window surrounds. The ceilings are now dropped, but original pressed metal ceilings likely remain extant underneath.

Second Floor

The second floor features a single-loaded hallway along the south side of the building with six rooms situated on its north side and a seventh room and toilet situated in the southeast corner. There is one window located about midway down the hall. The floors on the second floor currently are covered with carpeting except the far west room, which features a soft wood floor with its original natural finish. The walls feature plaster surfaces with ceilings of pressed metal in geometric designs. Woodwork includes the staircase railing, baseboard, 6-panel doors, and door and window surrounds. All these features are in excellent condition. Most of the woodwork and all of the metal ceilings are painted except for a few doors, which retain their original natural finishes.

The floor plan is arranged in such a way that one can enter each of the six rooms either from the hallway or from an enfilade of doors within the rooms linking all of them together. (See Continuation Sheet 30.) The exception to this is a toilet, which is located in the southeast corner of the second floor and is only entered from the hall.

Basement

One enters the basement by outside steps from grade or from a staircase from the first floor. The basement floor plan now features a series of partitions, which define office, storage, and hallway spaces, although the original floor plan featured fewer rooms. A vault is situated about midway down the south side of the basement, directly beneath the first floor vault. The east and north walls of this vault are of brick with a white glazed finish. The staircase to the first floor is situated adjacent to the east wall of the vault. The risers and treads of this staircase retain their original

United States Department of the Interior
National Park Service

NATIONAL REGISTER OF HISTORIC PLACES CONTINUATION SHEET

Section number 7 Page 6

CFN-259-1116

Peoples National Bank, Marion County, IA.

natural wood finishes, while the banister and newel post are painted white. The floors are now covered with carpeting. The basement now has dropped ceilings.

CONDITION AND INTEGRITY

This building is in excellent condition. The building remained occupied for most of its life and continues to be well maintained although now unoccupied. The foundation, walls, and roof are solid. The building is heated in the winter. Some water penetration to the far west room on the second floor has caused some plaster deterioration, but this is minor, and repairs to the roof have remedied the problem.

The Peoples National Bank House possesses high integrity according to the National Register's seven qualities.

The property's integrity of *location* is excellent. The building remains on its original site.

The integrity of the building's *design* is high. Although a horizontal strip of repointed brick stands between the first and second floors on the east façade and is visually distracting, this area originally featured commercial signage, an excellent place for the same use in the building's rehabilitation. The pressed metal cornice has been removed from the east elevation. While this loss is regrettable, an historic image of the cornice exists and could document its recreation. In the interior, the second floor enfilade arrangement of rooms and inter-connecting doors—a character-defining feature of the building—remains virtually unchanged since its original construction.

The *setting* of the Peoples National Bank House is excellent. The surrounding land use remains densely built-up with commercial building commensurate in scale and materials to the street's historic character. Many of these buildings are themselves of 19th and early 20th century construction. Although large and visually prominent, the 4-story Mollen Gracht (a new and mixed-use development across the street to the east) is massed and scaled to blend into the historic streetscape.

The integrity of *materials* in this building's materials is fine. Although the building has lost its cornice, historic photographs picture this architectural element, and it could be replicated. Otherwise, the integrity of the exterior building materials remains excellent. Although a remodeling of the interior's first floor installed dropped ceilings, these are easily removed. Original pressed

United States Department of the Interior
National Park Service

NATIONAL REGISTER OF HISTORIC PLACES CONTINUATION SHEET

Section number 7 Page 7

CFN-259-1116

Peoples National Bank, Marion County, IA.

metal ceilings remain above them. The cast concrete dogs flanking the main entrance to the building have somewhat weathered from the elements, but they remain generally intact.

The *workmanship* evident in the building is best seen in the fabrication of its interior woodwork, whose integrity is excellent. Constructed under the supervision of local carpenter-builder George Heeren, this oak woodwork retains its natural finishes.

The Peoples National Bank retains an excellent historic *feeling*. The sense of commercial vitality, which characterized the building and its surroundings historically, continues to invigorate the area today. The iconic dogs on the front steps of the building continue their unabated sleep and watch. Highly visible because they project beyond the front façade, these figures can be seen from some distance when approaching the building from any direction. From their installation in 1905, these dogs and their story have charmed generations of Pella residents and visitors alike. Today, they continue to evoke in the viewer a feeling of companionable familiarity. A proposal to move them to the new site of Pella's city hall is, thankfully, dead, scotched by residents, who urged the City of Pella to let sleeping dogs lie.

Peoples National Bank possesses an excellent quality of *association*. Visitors from its period of significance would immediately recognize the building.

Peoples National Bank
Name of Property

Marion County, Iowa
County and State

8. Statement of Significance

Applicable National Register Criteria

(Mark "x" on one or more lines for the criteria qualifying the property for National Register listing)

- A** Property is associated with events that have made a significant contribution to the broad patterns of our history.
- B** Property is associated with the lives of persons significant in our past.
- C** Property embodies the distinctive characteristics of a type, period, or method of construction or represents the work of a master, or possesses high artistic values, or represents a significant and distinguishable entity whose components lack individual distinction.
- D** Property has yielded, or is likely to yield, information important in prehistory or history.

Criteria Considerations

(Mark "x" on all the lines that apply)

Property is:

- A** owned by a religious institution or used for religious purposes.
- B** removed from its original location.
- C** a birthplace or grave.
- D** a cemetery.
- E** a reconstructed building, object, or structure.
- F** a commemorative property.
- G** less than 50 years of age or achieved significance within the past 50 years.

Areas of Significance

(Enter categories from instructions)

COMMERCE

ARCHITECTURE

Period of Significance

1905-1915

Significant Dates

1905

1915

Significant Person

(Complete if Criterion B is marked above)

Rietveld, Herman

Cultural Affiliation

Architect/Builder

Heeren, George

Narrative Statement of Significance - (Explain the significance of the property on one or more continuation sheets)

9. Major Bibliography References

Bibliography

(Cite the books, articles and other sources used in preparing this form on one or more continuation sheets.)

Previous documentation on file (NPS):

- previous determination of individual listing (36 CFR 67) has been requested
- previously listed in the National Register
- previously determined eligible by the National Record
- designated a National Historic Landmark
- recorded by American Buildings Survey # _____
- recorded by Historic American Engineering Record # _____

Primary location of additional data:

- State Historical Preservation Office
- Other State agency
- Federal agency
- Local government
- University
- Other

Name of repository

United States Department of the Interior
National Park Service

NATIONAL REGISTER OF HISTORIC PLACES
CONTINUATION SHEET

Section number 8 Page 8

CFN-259-1116

Peoples National Bank, Marion County, IA.

SUMMARY OF SIGNIFICANCE

Constructed in 1905, the Peoples National Bank is National Register eligible, locally under Criterion B. The building calls attention to Herman Rietveld, an early 20th century entrepreneur and civic leader in Pella, whose vision, drive, and commitment to improvement exemplified the local booster during the Progressive era. In 1905, Rietveld established several banking institutions and erected the Peoples National Bank to house them. The design of the building calls attention to Rietveld's progressive ideas. Its floor plan is designed to facilitate multiple occupancy and multi-functions. The building originally housed a printing plant, two newspaper offices, two banks, and rental areas for other offices on the second floor. This dense occupancy promoted efficiency and lowered the building's costs. Herman Rietveld's attractive personality and ability to cajole people to follow his lead were largely responsible for the success of this innovative plan.

The Peoples National Bank is National Register eligible, under Criterion C, as an outstanding example of a small bank, designed under the influence of Classical Revival styling. The design of the building is attributed to local architect Henry DeGoyer. On the second floor, the Peoples National Bank features an enfilade of interconnecting rooms, suggesting a European source of inspiration. Two works of art, the cast concrete sculptures of two dogs, flank the main entrance of the building and serve as icons for the building. George Heeren, a local cabinetmaker, crafted the building's interior woodwork.

The period of significance for this building is 1905-1915. This period indicates the time that the building functioned under Rietveld's multi-functional plan. Significant dates include 1905, when the Peoples National Bank began operations, and 1915 when it failed. The property possesses three contributing resources, the building itself, which is classified as a building, and the two dog sculptures, which are classified as contributing objects.

HERMAN RIETVELD

Herman Rietveld (1864-1959) is significant as an early 20th century entrepreneur in Pella, whose drive and boosterism acted as leaven in this conservative community and resulted in improvements to its business, industrial, and civic life. Rietveld exemplified the progressive businessman at the turn-of-the-century, and his vigor was largely responsible for the construction of the Pella Opera House, the formation of the Peoples National Bank, People's Trust Co., and the People's Savings Bank, and the bringing of new editors to Pella for *The Chronicle*, a local newspaper.

United States Department of the Interior
National Park Service

NATIONAL REGISTER OF HISTORIC PLACES
CONTINUATION SHEET

Section number 8 Page 9

CFN-259-1116

Peoples National Bank, Marion County, IA.

Born Herman van Dam in Pella, Iowa, Rietveld became the adoptive son of Wiggert and Anna Rietveld and subsequently took their name. He attended public schools in Pella and graduated from Central University in Pella in 1888, having trained for the Christian ministry. Instead, Rietveld entered business.

Rietveld became involved in the Pella Drain and Tile Company. According to one source, "the business was owned by Harve Fisk and Herman Rietveld." (Pella Historical Society: Vol. 2, 263) This factory was located on the south side of Pella at the present site of Caldwell Park (Swimming Pool Park). (*Ibid.*) Documented buildings constructed of Pella brick include the Pella Opera House (NRHP, 1992), Peoples National Bank, and Ideal Pharmacy (southeast corner Franklin and Main Streets). Some of the brick used for the latter property are impressed "Pella Drain Tile Co./Pella, Iowa."

Later, Rietveld joined the Garden City Feeder Company. Begun in 1888 in a local workshop, the firm was also known as the Pella Stacker Company. The company manufactured a device with an oscillating arm, which scattered straw as it was processed from a threshing machine. The arm spread the straw in nearly an arc, so that it could be bound more efficiently than in using other stacking equipment, which left the straw in piles. By 1900 or so, Rietveld had become a director of the Garden City firm along with Jake H. Van Gorp, P. H. Van Gorp, A. N. Kuyper, Arie Van Housweling, and several others. (*Ibid.*: Vol. 2, 248)

By the turn-of-the-century, Rietveld had established his reputation in Pella as an entrepreneur. Good-looking and charismatic, he charmed others to follow his lead in civic as well as business affairs. His push to build the Pella Opera House, completed in 1900, demonstrated Rietveld's effectiveness. (Page 1992) In 1905, Rietveld entered the banking business along with John Rhynsberger and B. H. Van Spanckeren. Together they formed the Peoples National Bank, People's Trust Co., and the People's Savings Bank and constructed the subject of this nomination to house them.

Rietveld's own words describe his populist style and mercurial personality:

After college, and training to be a preacher, I, like a dam [*sic*] fool, went into business. I spent \$100,000.00 in building up Pella, but like the graduating class in 1888 in old Central, I had to do this alone too. And that wasn't enough; like a big fool I started to build Harvey, Iowa, for \$35,000 more and when I got done with this it was not worth 35 cents. Ambition gone wild; judgment rotten. (*The Pella Chronicle*, June 11, 1931)

United States Department of the Interior
National Park Service

NATIONAL REGISTER OF HISTORIC PLACES
CONTINUATION SHEET

Section number 8 Page 10

CFN-259-1116

Peoples National Bank, Marion County, IA.

Harvey, Iowa, is located some seven miles south of Pella. During the early 20th century, the bituminous coal deposits around this small town offered potential for exploitation by the railroads. In 1901, Rietveld founded the Harvey Land Company to promote local real estate and established, along with several other investors, a factory to manufacture paving brick using local clay.

The Des Moines Daily Capital published a full-page story describing Harvey during this boom period, replete with a prominent photograph of Rietveld. (See Continuation Sheet 31.) As Rietveld noted in the newspaper article quoted above, success eluded him in these ventures.

In 1915, Rietveld's banks failed. The immediate cause of their collapse is a mystery but poor judgment—or "judgment rotten," as Rietveld himself admits—lay at the root. Rietveld's investments gone sour in Harvey likely played a role in this collapse.

Rietveld remained in Pella for another decade after these failures, but he never regained his position of respect and influence. In 1926, he relocated to Longview, Washington, where he became circulation manager of the *Longview Daily News*. He subsequently returned to Pella and later to Fairfield, Iowa, where he farmed. In 1959, Rietveld died in Knoxville, Iowa, where he was living with his daughter. Rietveld is buried in Oakwood Cemetery in Pella with his adoptive parents. (Pella Historical Society: Vol. 2, 458)

In his glory days in Pella, Herman Rietveld stands as a colorful and representative example of the progressive booster. This icon of Midwestern life in the early 20th century pushed to improve local business, industry, education, civic life, and community infrastructure. The Pella Opera House remains as a testament of Rietveld's civic contributions to his community. The Peoples National Bank calls attention to his ability to bring people together in joint business ventures. By the same token, Rietveld's failure calls attention to the lack of business acumen, which sometimes lay behind boosterism.

Other Pella Properties Associated with Rietveld

In addition to the Peoples National Bank, two others properties in Pella are extant with known Rietveld associations. One of them, the Pella Opera House, is described above. During Rietveld's childhood, he lived with his adopted parents at 1008 East Second Street. Built in 1853 by the McClatchey family, this 2-story, frame, single-family dwelling shows the influence of Italianate styling on its design and is likely National Register eligible in its own right under Criterion C. As

United States Department of the Interior
National Park Service

NATIONAL REGISTER OF HISTORIC PLACES CONTINUATION SHEET

Section number 8 Page 11

CFN-259-1116

Peoples National Bank, Marion County, IA.

the childhood home of Rietveld, the McClatchey House lacks significance under Criterion B for Rietveld's adult career. Rietveld's other residences in Pella are unknown. If identified and found extant, they too would lack a direct association with Rietveld's business interests. Other properties associated with Rietveld's career as an entrepreneur are nonextant, including the Garden City Feeder Co. and the Pella Drain and Tile plants.

ARCHITECTURE

The Peoples National Bank is architecturally significant as fine example of Classical Revival influence applied to a small bank building and attributed to Stanley DeGoyer as its architect. The two cast concrete dogs, which flank the main entrance of the building, are commercial works of art in their own right. The interior woodwork by local cabinetmaker George Heeren is of architectural interest.

Stanley DeGoyer

Stanley DeGoyer was an architect working in Pella at the turn-of-the-20th century. Mystery surrounds his career. Perhaps he studied architecture or a related discipline at a 19th century institution in Iowa or out-of-state. Wesley I. Shank's *Iowa Historic Architects: A Biographical Dictionary* makes no mention of DeGoyer, so he was never registered in Iowa as an architect by exemption or examination. The DeGoyer name disappears from the public record in Pella after the first years of the 20th century. He likely removed from Pella to seek his fortune elsewhere.

This nomination attributes the design of the Peoples National Bank to Stanley DeGoyer based upon his business associations with Herman Rietveld and circumstantial evidence. The *Pella Chronicle* documents the Peoples National Bank as architect-designed but gives no name of the responsible individual or firm. (*Pella Chronicle*, April 13, 1905)

In 1900, five years before the construction of the Peoples National Bank, DeGoyer had designed the Pella Opera House for Herman Rietveld. (Page 1992: 8-26) Given the acclaim this design of building received, it stands to reason that Rietveld would commission DeGoyer to design his new bank. Pella brick was used in the construction of both these buildings, another sign of Rietveld's propensity for continuity. As to other architects practicing in Pella at this or any other time, Shank's definitive work lists none.

United States Department of the Interior
National Park Service

NATIONAL REGISTER OF HISTORIC PLACES CONTINUATION SHEET

Section number 8 Page 12

CFN-259-1116

Peoples National Bank, Marion County, IA.

As the Pella Opera House demonstrates, DeGoyer worked in the Classical Revival style and showed a talent for practical solutions to architectural problems. His façades are notable for their extensive use of window glass. The Pella Opera House is likely his largest building and features a variety of fenestration designs, including four prominently placed oculus windows filled with colored glass and surrounded by polychrome brickwork.

The front façade of the Peoples National Bank also exhibits a penchant for glass. The building features a large storefront window, a basement door flanked by sidelights, six other double-hung sash windows, and a front door with a large oval light surmounted by a double transom—all configured in a tight space without any feeling of clutter. This extensive employment of window glass calls attention to the predilection among Pellans to infuse interior spaces with quantities of natural light, itself a carry-over from their homeland

A variety of Classical Revival-influenced architectural elements embellishes the east elevation. These features include a symmetrically designed placement of bays, a belt course separating the basement podium and the first floor, arches with keystones over two windows on the first floor, and the suggestion of pilasters on each end of the second floor created by the balance of the wall being inset from the plane of the façade.

Floor Plan

In addition to a standard corridor on the second floor, an enfilade of doors connects six of its rooms. This innovative floor plan creates a well-articulated building of enduring practicality. The employment of such an enfilade is not unique in Iowa, but it is unusual and suggests of an overseas source of inspiration. (Page 1997b) Palaces and other large buildings in Britain and on the Continent frequently featured rooms interconnected in this fashion during the 18th century. DeGoyer appears to have transferred this design on a modest scale to Pella.

The offices of the *Pella Chronicle* and *Baptist Record* were located in the east end of the basement. The office of the People's Trust Company was situated to the west of them in the basement. The pressroom of the *Chronicle* and *Record* was located at the rear of the basement. (*Pella Chronicle*, November 30, 1905)

The first floor contained the banking room and offices in the front and the main job and composing rooms for the *Pella Chronicle* and *Baptist Record* in the rear. The separation of the printing

United States Department of the Interior
National Park Service

NATIONAL REGISTER OF HISTORIC PLACES
CONTINUATION SHEET

Section number 8 Page 13

CFN-259-1116

Peoples National Bank, Marion County, IA.

operations (with their machinery and ink) in the basement from the publication offices on the first floor resulted in a "neatness of everything" lacking at their former location. (*Ibid.*)

Under the new arrangement access to the offices will be much more convenient to patrons in every way, and in many ways it is thought the new location will be a great improvement over the old. (*Ibid.*)

On the second floor, the arrangement of hall, offices, and their interconnecting doors facilitated a flexible use of space. An enterprise could rent one or more of these rooms, as needed, and have internal access to their operations without recourse to the common hall on the floor. This design proved popular.

It has been said that "birds of a feather flock together," and the present case is no exception to the rule. Some of Pella's best as well as most influential business men will have office quarters within these walls. (*Ibid.*)

The construction of the building in 1905 featured other unusual features, according to local descriptions of it:

We understand there are to be several new and original features about this Bank for Savings. The room will be easily accessible for women and children.

On this floor will also be situated the large vaults containing the two hundred and fifty safety deposit boxes. These vaults are of modern design; constructed of fire proof material. Those vaults are neatly finished with beautiful white tile brick, making them neat and unique in appearance. It is said that these vaults can not be surpassed in Iowa for their solidity and fire safety. Many of the boxes have already been spoken for by business men and farmers.

In connection with the safety deposit vaults are the coupon rooms. These rooms are, we might say, small private offices. One may take his safety box from the vaults, go to one of these rooms and there be as private with his papers and valuables as in his own home.

A nice feature of this room is that it will contain a device which will make it impossible to ever lose a paper or a valuable. As soon as the occupant of the coupon room has left with his safety deposit box, the door of the room closes and locks and none can enter until the

United States Department of the Interior
National Park Service

**NATIONAL REGISTER OF HISTORIC PLACES
CONTINUATION SHEET**

Section number 8 Page 14

CFN-259-1116

Peoples National Bank, Marion County, IA.

attendant opens it to see if any paper has been forgotten. One feature of the safety deposit box is that there will be absolute privacy.

On the bottom floor in the front and rear will be the offices of the Chronicle and the Baptist Record with all of the machinery, type, etc. This will be the most complete and conveniently arranged office in Marion county by far. The rear half of the first floor will also be occupied by printing material. A fine, new press, book and job as well as a quantity of other machinery and material will be added to this already well equipped plant.

In this room will also be located the desks of the Peoples Trust Co.

On the floor above [the main floor] are the splendid banking rooms of the Peoples National Bank. Here will be conducted a general commercial banking business. The beautiful interior of this room will be appreciated by all. For the last two months Geo. Heeren and his whole force of workmen have been working on the furniture. It is to be antique oak and of dark finish. All through this room the combination of elegance and simplicity will be in evidence. The walls will be beautifully frescoed and the ceilings of paneled steel.

On the upper floor are the numerous office rooms. The fact that three rooms are to have free janitor service, free light and free heat makes them very attractive.

The exterior of the building is as artistic and modern as the interior.

The building all through, reflects much credit upon the mechanics and owners and has been so arranged that not one inch of space will be lost.

The entire building will be heated, lighted, provided with a day current and all modern conveniences. The power for the electric plant, as well as that for running the printing presses and type setting machines, will be supplied by a heavy gasoline engine. (*Ibid.*)

Dog Statues

The origin of the life-size cast concrete dogs, which flank the front entrance to the building, is unknown. The Peoples National Bank likely bought these commercial art castings from an out-of-state statuary supply house. Upon their arrival in Pella, they became the mascots of the bank. Indeed, bank officials used them in advertisements when inviting customers to visit the bank "At the sign of the dogs." (See Continuation Sheet 29.) The presence of statues at a bank entrance is not unknown in Iowa. Louis Sullivan placed two terra cotta griffins to guard the entrance of his jewel box bank in Grinnell (Merchants' National Bank NRHP). But these guards stand at fierce

United States Department of the Interior
National Park Service

NATIONAL REGISTER OF HISTORIC PLACES
CONTINUATION SHEET

Section number 8 Page 15

CFN-259-1116

Peoples National Bank, Marion County, IA.

attention—not at all the sentimental mascots at the entrance to the Pella bank. These figures complement the light-hearted side of Herman Rietveld's personality,

George Heeren

George Heeren was responsible for the interior finish work and some of the furniture of the People National Bank. Heeren learned cabinetry in his native home in the Netherlands and emigrated to the United States at the age of 22. (*The Pella Chronicle*, October 30, 1930, 93)

Although none of Heeren's furniture for Rietveld's bank has been identified as such, his staircase to the basement remains intact. Its banister shows the influence of Art Nouveau styling. Their twisting organic shapes suggest a whiplash. By the time Heeren immigrated, Art Nouveau was an art force in the Netherlands. Perhaps Heeren got the idea for such a design in his homeland.

CITY HALL

Converted to a city hall in 1917 from its original purposes as offices and a printing plant, the Peoples National Bank is of historical interest because of its associations with progressivism in Pella. The conversion of the building consolidated various functions of city government under one roof and symbolized the push for efficiency and economy then emerging in the community. The City of Pella purchased this building in 1916 for use as its municipal building, ending decades in rented quarters.

It should be noted that many communities throughout Iowa undertook improvements to their municipal buildings during the early 20th century. Big cities in the state had shown the way. (Page 1997a) As the enthusiasm for Progressivism accelerated, small towns, such as Pella, followed suit. The purchase of the Peoples National Bank by the City of Pella calls attention to this historic context with a local variation. Instead of a new building, Pellans adapted an old one to a new use.

TO BUY PEOPLE'S TRUST BUILDING

City Council Procures Vaults for
Records—Must Vacate Present
Office or Pay more Rent.
[continued on next page]

United States Department of the Interior
National Park Service

NATIONAL REGISTER OF HISTORIC PLACES
CONTINUATION SHEET

Section number 8 Page 16

CFN-259-1116

Peoples National Bank, Marion County, IA.

G. G. Gaass, agent of F. W. Brinkhoff, presented a communication to the [city] council informing them that he had opportunity to rent the office now used by the city for \$15.00 per month, which is more than is now paid by the city. He asked that the city enter into contract to lease the building for a term of years at \$15.00 per month or to vacate not later than September, 1916. The city is now paying \$10.00 per month.

The mayor read to the council an offer from the agent of the People's Trust building to sell this building to the city for \$7,250, the offer subject to ratification by his board of directors. The mayor stated that he had conferred with many citizens concerning the wisdom of this purchase and that they approved the plan.

A resolution was introduced providing for the purchase, which was carried. The plan is to pay \$1000 down, \$200, March 1, 1917, and the balance before September 1, 1920. This money is to come from the light fund which is ample to meet it. All that now remains to complete the deal is the formal ratification of the contract by the board of directors of the Monroe bank which owns the building. The purchase of this building will give the city not only office room but also vaults in which the maps, records, etc., of the city can be protected from fire, and other rooms needed for the work of the light and other departments. (*Pella Chronicle*, August 17, 1916)

Ever cautious of expense, the Pella Dutch recognized that they had a bargain.

The conversion of the Peoples National Bank into a city hall required relatively little effort or expense. Stories about this conversion appeared frequently in the local newspapers. The presence of vaults, bank counters, and other bank fixtures fit nicely into the needs of a city hall. (*Ibid.*: September 28, 1916) Some repairs, such as a new roof, were needed but were generally minor. (*Ibid.*: April 5, 1917) Indeed, the mayor of Pella showcased the purchase of the building in his 1917 Annual Report:

The need for better quarters for the city officers had long been felt. The city has very valuable records and maps and had no safe place to keep them, if destroyed they could not have been replaced for many thousands of dollars. The city was fortunate therefore to acquire the building known as the People's Trust building for the sum of \$7,250 this building is worth not less than \$10,000 it gives the city a safe place for all records and maps, ample room for council chamber, clerks office and a large room for the superintendent of water and sewer and light department and the rent from the basement and upper rooms more than pays the interest on the investment. (*Ibid.*)

United States Department of the Interior
National Park Service

NATIONAL REGISTER OF HISTORIC PLACES

CONTINUATION SHEET

Section number 8 Page 17

CFN-259-1116

Peoples National Bank, Marion County, IA.

REPRESENTATION IN OTHER CULTURAL RESOURCES SURVEYS

In 1978, the Central Iowa Regional Association of Governments (CIRALG) conducted a historic resources survey of Pella. This survey did not find the Peoples National Bank National Register eligible at that time, however, that evaluation did not consider the man who had the property built, the architect, or the interior.

Nine National Register nominations have evaluated individual properties in Pella; but, in spite of Pella's historical significance as a premier ethnic settlement in Iowa, the community still lacks a comprehensive survey of its historic and architectural resources. Such a survey should be undertaken and include as many property types as possible.

POTENTIAL FOR HISTORICAL ARCHAEOLOGY

The site's potential for archaeological significance is, as yet, unevaluated but of very limited probability, given the extensive excavation required for the construction of the Peoples National Bank whose footprint extends over virtually the entire site.

RECOMMENDATIONS FOR FURTHER RESEARCH AND REGISTRATION

Further research and survey is recommended to identify other candidate buildings of Pella brick construction. The soft consistency of its body and its orange color are key characteristics. Intensive investigation might then conclusively document its use.

Herman Rietveld's significance for the upbuilding of Harvey, Iowa, is an unexplored story, which also merits research.

SELECTION OF HISTORIC NAME

The selection of an historic name for this property posed a challenge. Because of its original multi-functional purposes, the building bore different names accordingly. They included People's Trust Co., People's Bank for Savings, and Peoples National Bank. An original sign affixed on the front facade of the building (see Continuation Sheet 27.) identified the building as "Peoples National Bank." This name was chosen for the building's historic name, including its lack of an apostrophe,

United States Department of the Interior
National Park Service

NATIONAL REGISTER OF HISTORIC PLACES

CONTINUATION SHEET

Section number 8

Page 18

CFN-259-1116

Peoples National Bank, Marion County, IA.

because it was the owners' choice for the building's signage. Each of the others names, including Pella City Hall, is included in this nomination as common names for the building.

ACKNOWLEDGEMENTS

The author acknowledges with appreciation the assistance of the Historic Pella Trust, Inc., which underwrote this nomination and underwrote its preparation, and Ronald D. Rietveld, emeritus professor of history at Cal-State University Fullerton, who provided a rich selection of newspaper references and other archival records for this nomination. He is a descendant of the family who adopted Herman Rietveld.

United States Department of the Interior
National Park Service

NATIONAL REGISTER OF HISTORIC PLACES CONTINUATION SHEET

Section number 9

Page 19

CFN-259-1116

Peoples National Bank, Marion County, IA.

BIBLIOGRAPHY

PRIMARY

Abstract of Title. Property of Historic Pella Trust, Inc., Pella, Iowa.

Des Moines Daily Capital, The
1902 "Harvey, The Most Promising Town in Central Iowa." May 31, 1902.

Donnel, William
1872 *Pioneers of Marion County, Iowa*; Republican Steam Printing Company; Des Moines, Iowa.
Reprinted circa 1976.

Marion County Auditor's Office
various Transfer Books E and F Town Lots.

Marion County Assessor's Office
n.d. Property Record Card.

"Pella Advertiser Souvenir Edition"
1895 Special publication of *The Saturday Advertiser*, Pella, IA.

Pella Cemetery Records
n.d. Pella Public Library.

Pella Chronicle
various Pella, IA.

Pella History
n.d. Newspaper clippings, including those from *Pellas Weekblad*, in 3-ring binder. Pella Public Library, Local History Room.

SECONDARY

Carlson, Richard
2009 State Nominations Review Committee comments, June 12, 2009. On file at the State Historical Society of Iowa, Des Moines.

CIRALG

1978 "Historic Resources in Central Iowa; Architecture." Survey report of Central Iowa Regional Association of Local Governments, Des Moines, Iowa.

United States Department of the Interior
National Park Service

NATIONAL REGISTER OF HISTORIC PLACES
CONTINUATION SHEET

Section number 9 Page 20

CFN-259-1116

Peoples National Bank, Marion County, IA.

Page, William C.

1989 "The Upbuilding of Pella's Town Center as a Commercial Node, 1847-1941." Prepared for the Community Development Committee of Pella, Iowa, and on file in Pella and at the State Historical Society of Iowa, Des Moines, Iowa.

Page, William C.

1992 "Pella Opera House." National Register of Historic Places Nomination. On file at the State Historical Society of Iowa, Des Moines, Iowa.

Page, William C.

1997a "Municipal Building [Ames, Iowa]." National Register of Historic Places Nomination. On file at the State Historical Society of Iowa, Des Moines, Iowa.

Page, William C.

1997b "Commercial Block" Iowa Site Inventory Form #27-00118, prepared for the Citizens National Bank of Leon, Iowa, and on file at the State Historical Society of Iowa, Des Moines.

Pella Historical Society

1988-1989 *History of Pella 1847-1987*. Two volumes. Curtis Media Corporation, Dallas, Texas.

Shank, Wesley, I

1999 *Iowa's Historic Architects, A Biographical Dictionary*. University of Iowa Press, Iowa City, IA.

Souvenir History of Pella, Iowa

1922 Privately printed, The Booster Press, Pella, Iowa.

Steinmetz, Douglas J.

2006 "Schematic Design." Technical Advisory Network report (TAN) prepared for the City of Pella and State Historical Society of Iowa, Des Moines, Iowa.

Union Historical Company

1881 *History of Marion County, Iowa*. Union Historical Company, Des Moines.

Wright, John W., and William A. Young

1915 *History of Marion County, Iowa*. S. J. Clarke Publishing Co., Chicago. Two volumes.

MAPS

Marion County Assessor's Office

n.d. GIS maps of Pella, Iowa.

Sanborn Fire Insurance Maps of Pella, Iowa: 1906, 1911.

United States Department of the Interior
National Park Service

NATIONAL REGISTER OF HISTORIC PLACES
CONTINUATION SHEET

Section number 9 Page 21

CFN-259-1116

Peoples National Bank, Marion County, IA.

United States Geological Survey
1976 "Pella Quadrangle."

ORAL HISTORY

Rietveld, Ronald D., Ph.D., with William C. Page, October 2008.

Peoples National Bank
Name of Property

Marion County, Iowa
County and State

10. Geographical Data

Acreage of Property Less than one acre

UTM References

(Place additional UTM references on a continuation sheet.)

1 | 15 | 506990 | 4583630

Zone Easting Northing

2 | | |

Zone Easting Northing

3 | | |

Zone Easting Northing

4 | | |

Verbal Boundary Description

(Describe the boundaries of the property on a continuation sheet)

Boundary Justification

(Explain why the boundaries were selected on a continuation sheet)

11. Form Prepared By

name/title William C. Page, Public Historian

organization Historic Pella Trust, Inc. date January 20, 2008

street & number 520 East Sheridan Avenue (Page) telephone 515-243-5740; FAX 515-243-7285

city or town Des Moines state Iowa zip code 50313-5017

Additional Documentation

Submit the following items with the completed form:

Continuation Sheets

Maps

A **USGS map** (7.5 or 15 minute series) indicating the property's location.

A **Sketch map** for historic districts and properties having large acreage or numerous resources.

Photographs - Representative **black and white photographs** of the property.

Additional items - (Check with the SHPO or FPO for any additional items)

Property Owner

(Complete this item at the request of SHPO or FPO.)

name Horizon Distribution, Inc.

street & number 2074 Hawthorn Drive telephone 641-620-9048 (Neil Wilson)

city or town Pella state Iowa zip code 50219

Paperwork Reduction Act Statement: This information is being collected for applications to the National Register of Historic Places to nominate properties for listing or determine eligibility for listing, to list properties, and to amend existing listings. Response to this request is required to obtain a benefit in accordance with the National Historic Preservation act, as amended (16 U.S.C. 470 et seq.).

Estimated Burden Statement: Public reporting burden for this form is estimated to average 18.1 hours per response including time for reviewing instructions, gathering and maintaining data, and completing and reviewing the form. Direct comments regarding this burden estimate or any aspect

United States Department of the Interior
National Park Service

NATIONAL REGISTER OF HISTORIC PLACES
CONTINUATION SHEET

Section number 10 Page 22

CFN-259-1116

Peoples National Bank, Marion County, IA.

VERBAL BOUNDARY DESCRIPTION

North 24 feet of the east 95 feet of Lot 8, in Block 39, Original Town of Pella,
Iowa.

BOUNDARY JUSTIFICATION

Contains all the land historically associated with the resource.

United States Department of the Interior
National Park Service

NATIONAL REGISTER OF HISTORIC PLACES CONTINUATION SHEET

Section number 10

Page 23

CFN-259-1116

Peoples National Bank, Marion County, IA.

LIST OF PHOTOGRAPHS

1. Peoples National Bank
717 Main Street
Pella, IA 50219
Looking west
William C. Page, Photographer
October 23, 2007
2. Peoples National Bank
717 Main Street
Pella, IA 50219
Looking southwest
William C. Page, Photographer
October 23, 2007
3. Peoples National Bank
717 Main Street
Pella, IA 50219
Looking southeast
William C. Page, Photographer
October 23, 2007
4. Peoples National Bank
717 Main Street
Pella, IA 50219
Looking northeast
William C. Page, Photographer
October 23, 2007
5. Peoples National Bank
717 Main Street
Pella, IA 50219
Looking west, detail of dogs
William C. Page, Photographer
October 23, 2007
6. Peoples National Bank
717 Main Street
Pella, IA 50219
Looking southwest, detail of banister in basement
William C. Page, Photographer
October 23, 2007
7. Peoples National Bank 717 Main Street
Pella, IA 50219
Looking southeast, 1st fl. vault
William C. Page, Photographer
October 23, 2007
8. Peoples National Bank
717 Main Street
Pella, IA 50219
Looking west, 2nd floor hall
William C. Page, Photographer
October 23, 2007
9. Peoples National Bank
717 Main Street
Pella, IA 50219
Looking east, 2nd floor enfilade
William C. Page, Photographer
October 23, 2007

Printed on HP Premium Plus Photo Paper, high gloss,
paper using HP 84/85 ink.

United States Department of the Interior
National Park Service

NATIONAL REGISTER OF HISTORIC PLACES CONTINUATION SHEET

Section number _____

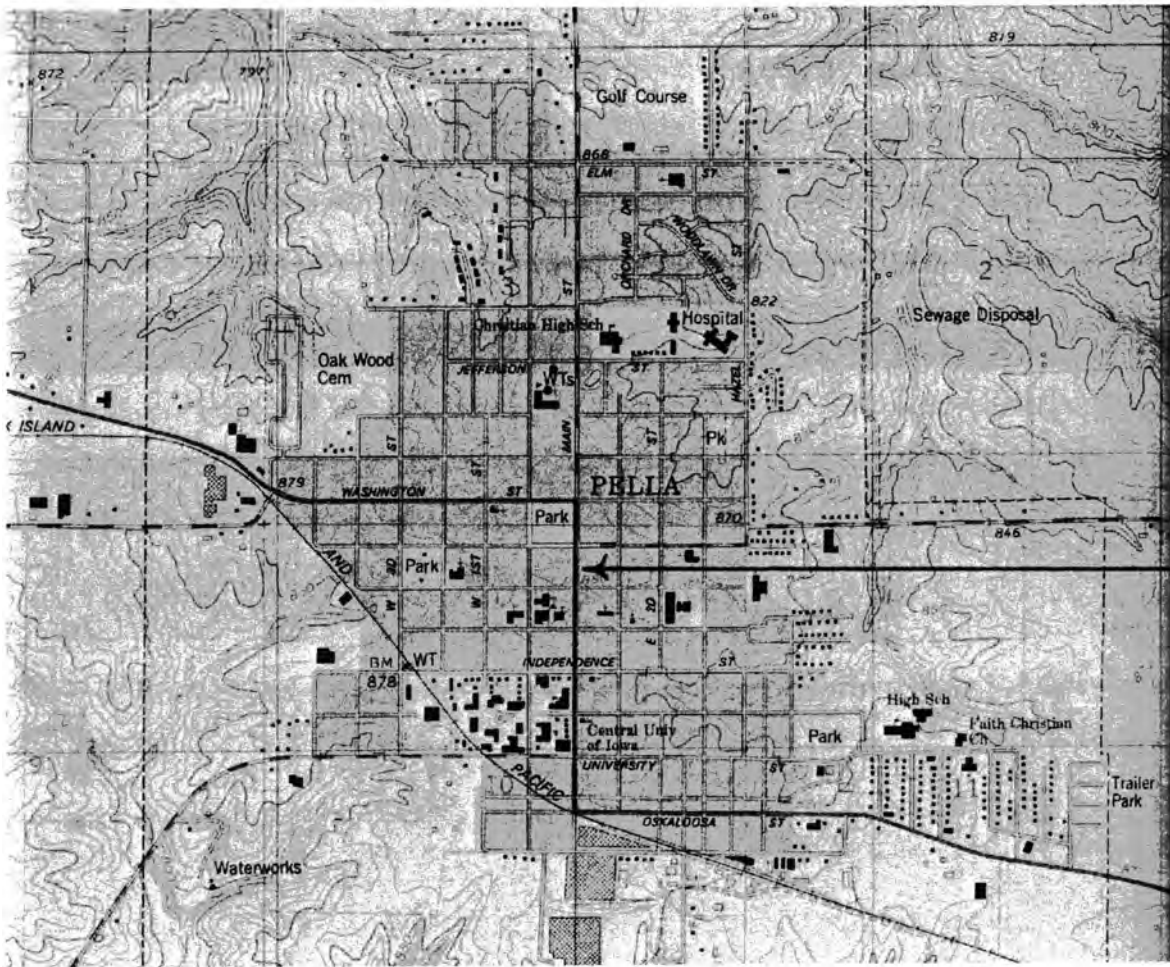
Page 24

CFN-259-1116

Peoples National Bank, Marion County, IA.

MAP

ARROW LOCATES PROPERTY



Source: U.S.G.S. Map (7.5 Minute Series), Pella, Iowa, Quadrangle, 1980.

United States Department of the Interior
National Park Service

NATIONAL REGISTER OF HISTORIC PLACES CONTINUATION SHEET

Section number _____

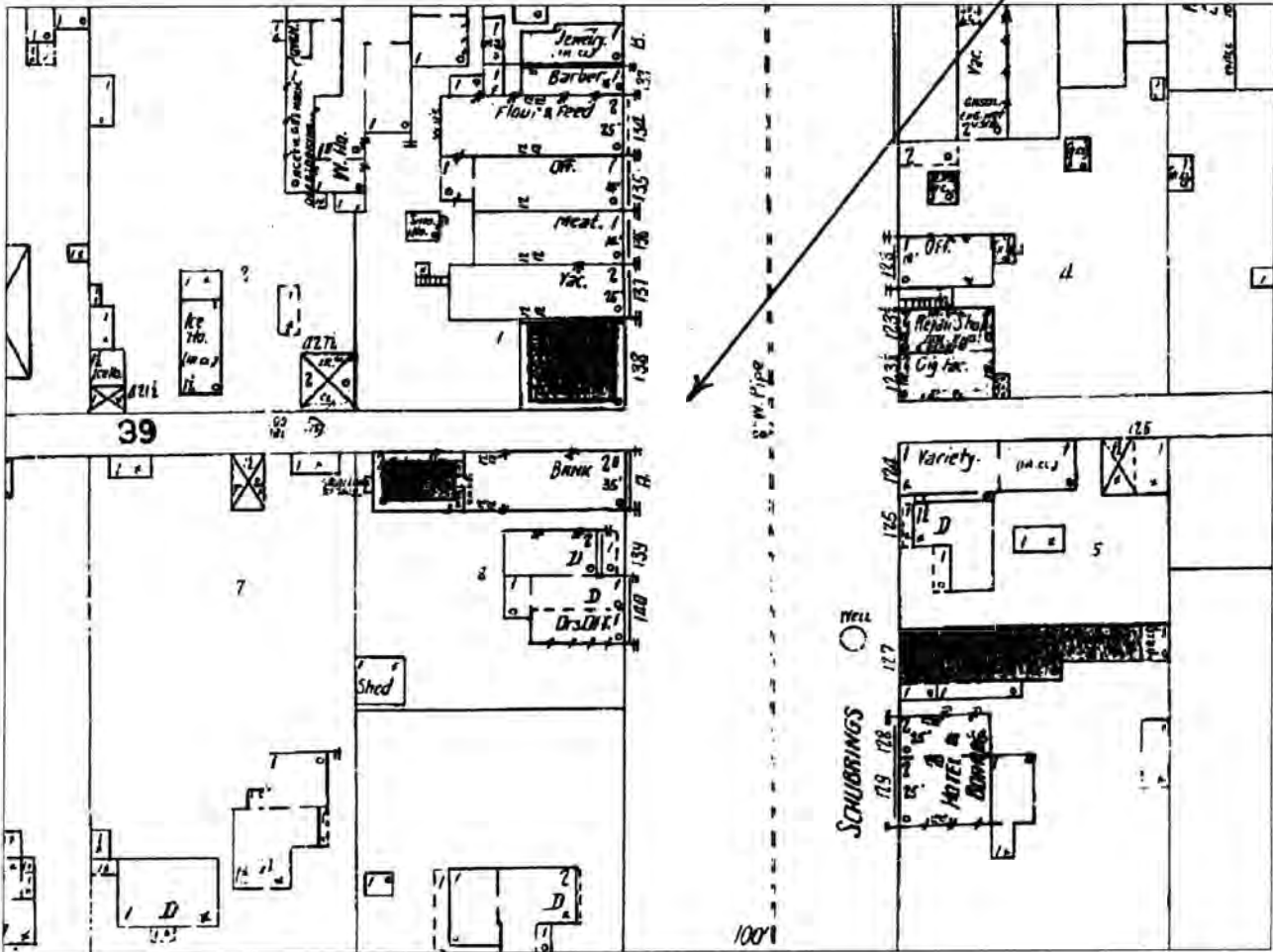
Page 25

CFN-259-1116

Peoples National Bank, Marion County, IA.

SANBORN MAP 1906

ARROW LOCATES PROPERTY



This map shows the footprint of the newly constructed bank and its surroundings to the south still residential.

Source: Sanborn Fire Insurance Map, Pella, Iowa, 1906, p. 3.



United States Department of the Interior
National Park Service

NATIONAL REGISTER OF HISTORIC PLACES CONTINUATION SHEET

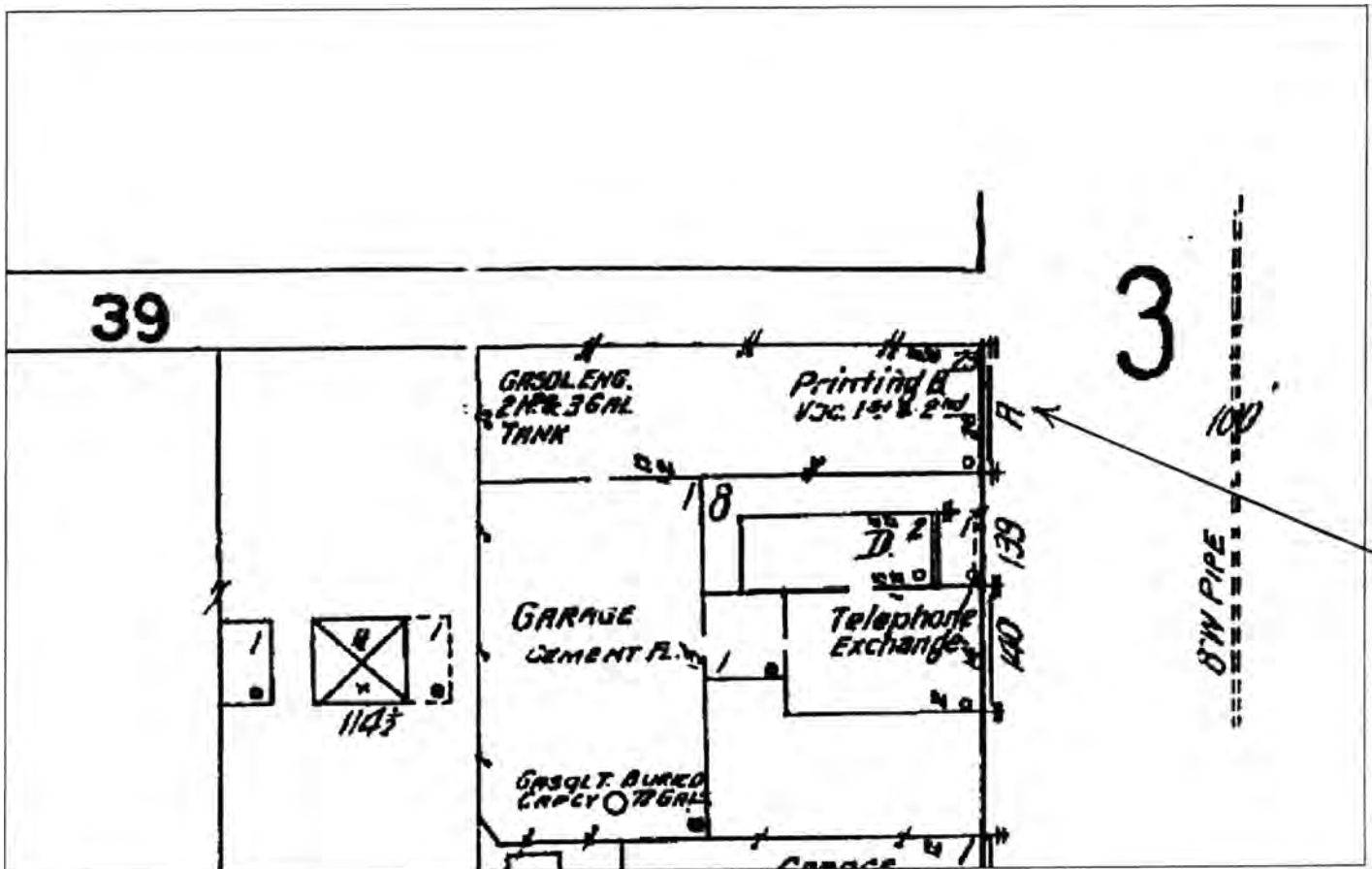
Section number _____ Page 26

CFN-259-1116

Peoples National Bank, Marion County, IA.

SANBORN MAP 1911

ARROW LOCATES PROPERTY



This map documents a 2-horsepower gasoline engine and a fuel tank at the rear of the building.
Printing operations are located in the basement.

Source: Sanborn Fire Insurance Map, Pella, Iowa, 1911, p. 6.



United States Department of the Interior
National Park Service

NATIONAL REGISTER OF HISTORIC PLACES CONTINUATION SHEET

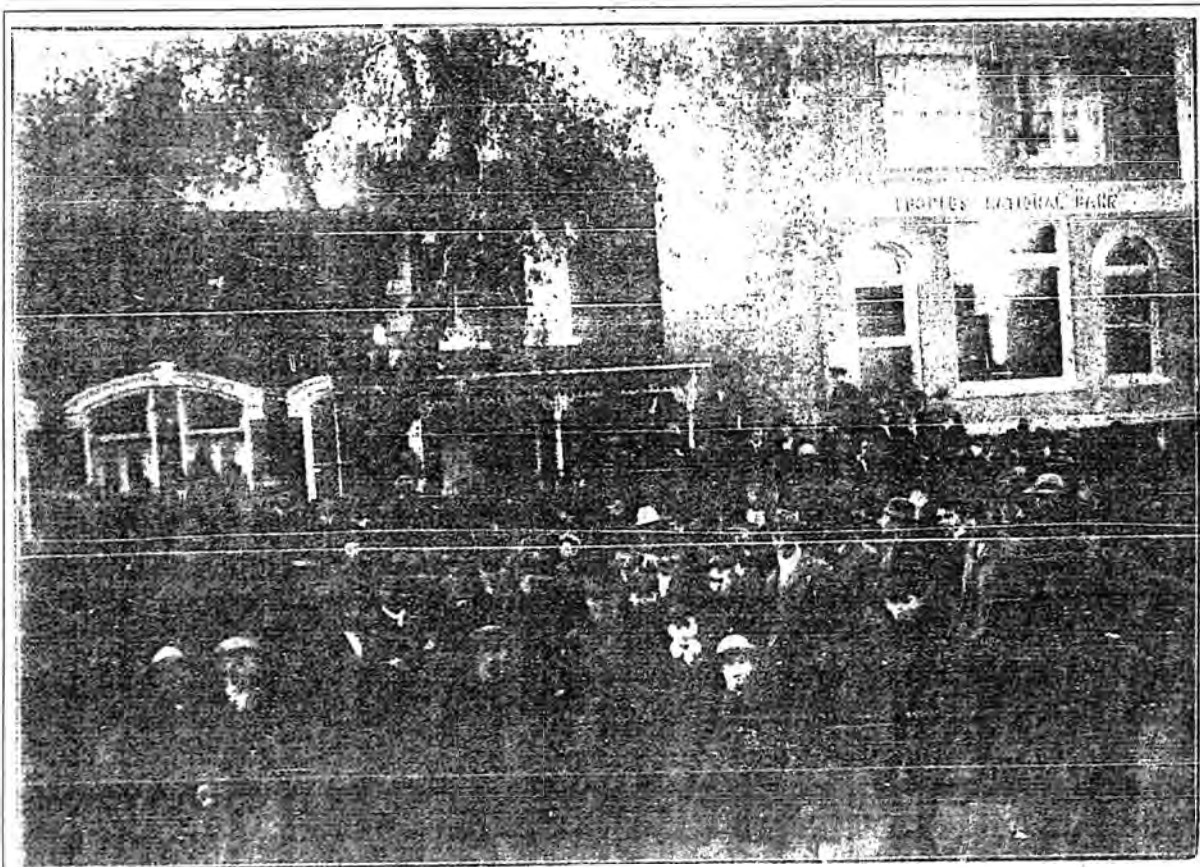
Section number _____

Page 27

CFN-259-1116

Peoples National Bank, Marion County, IA.

1905 PHOTOGRAPH



A sample crowd at the 3 o'clock Saturday afternoon sales
in front of the new bank

This photograph pictures a large crowd in front of the Peoples National Bank in anticipation of a public auction of real estate. The bank provided a venue for the exchange of property in a diluted but somewhat similar fashion to bourses in the Netherlands.

The practice of auctions at banking houses stands outside mainstream American commerce and points to Pella's European heritage. Although dark and blurry, this photograph pictures how signage—in this case "Peoples National Bank"—occupied the horizontal band between the first and second floors of the building. The City of Pella removed the sign when it converted the building into its city hall. (See following page.)

United States Department of the Interior
National Park Service

NATIONAL REGISTER OF HISTORIC PLACES CONTINUATION SHEET

Section number _____

Page 28

CFN-259-1116

Peoples National Bank, Marion County, IA.

1930 PHOTOGRAPH



This photograph pictures the Peoples National Bank, now converted to the Pella City Hall, with its cornice intact. Little else has changed physically since this time on the exterior.

Source: *The Pella Chronicle*, October 30, 1930, p. 10.

United States Department of the Interior
National Park Service

NATIONAL REGISTER OF HISTORIC PLACES
CONTINUATION SHEET

Section number _____

Page 29

CFN-259-1116

Peoples National Bank, Marion County, IA.

1905 NEWSPAPER ADVERTISEMENT

**If you need anything come and see us.
We perhaps can help you in
many respects.**

Peoples Trust Co.

“At the sign of the dogs.”

The People's Trust Co. played up the appeal of its canine mascots guarding and snoozing at the bank's front door. "At the sign of the dogs," as used in this ad, referenced the early American and Old World custom of displaying a rebus sign on the outside of a commercial establishment to advertise its location and identify the nature of its business. This antiquarian practice finds a charming counterpart in this 1905 advertisement. If the dogs ever had pet names, they have been forgotten, although they still call attention to the building. Anyone in Pella today, if asked, will immediately tell the visitor where the dogs can be found.

United States Department of the Interior
National Park Service

NATIONAL REGISTER OF HISTORIC PLACES CONTINUATION SHEET

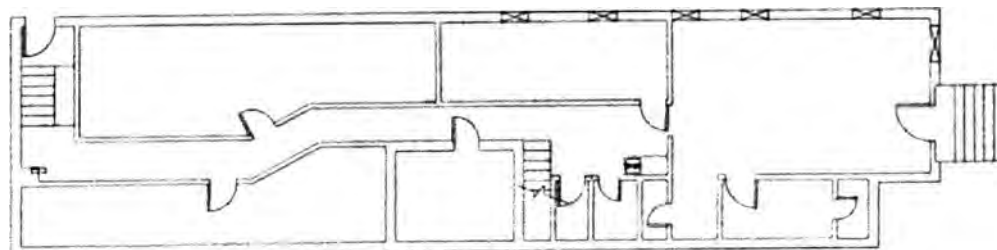
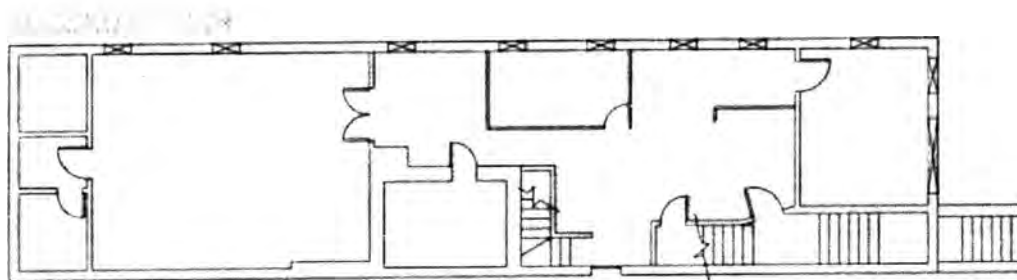
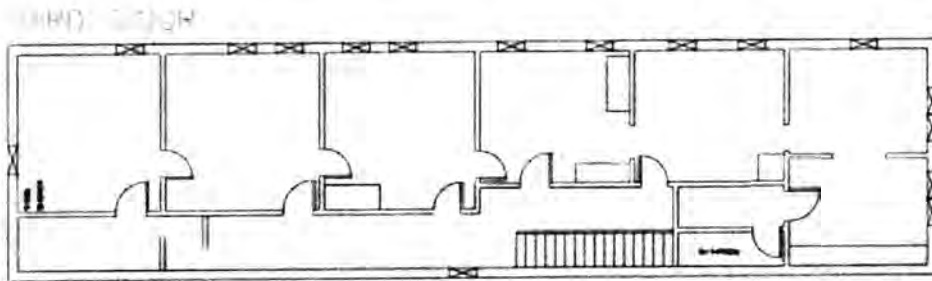
Section number _____

Page 30

CFN-259-1116

Peoples National Bank, Marion County, IA.

FLOOR PLANS



Source: City of Pella's Public Works Department, 2009.



United States Department of the Interior
National Park Service

NATIONAL REGISTER OF HISTORIC PLACES
CONTINUATION SHEET

Section number _____

Page 31

CFN-259-1116

Peoples National Bank, Marion County, IA.

HERMAN RIETVELD

1902



Source: *The Des Moines Daily Capital*, May 31, 1902.

UNITED STATES DEPARTMENT OF THE INTERIOR
NATIONAL PARK SERVICE

NATIONAL REGISTER OF HISTORIC PLACES
EVALUATION/RETURN SHEET

REQUESTED ACTION: NOMINATION

PROPERTY Peoples Nationals Bank
NAME:

MULTIPLE
NAME:

STATE & COUNTY: IOWA, Marion

DATE RECEIVED: 3/12/10 DATE OF PENDING LIST: 3/30/10
DATE OF 16TH DAY: 4/14/10 DATE OF 45TH DAY: 4/26/10
DATE OF WEEKLY LIST:

REFERENCE NUMBER: 10000202

REASONS FOR REVIEW:

APPEAL: N DATA PROBLEM: N LANDSCAPE: N LESS THAN 50 YEARS: N
OTHER: N PDIL: N PERIOD: N PROGRAM UNAPPROVED: N
REQUEST: N SAMPLE: N SLR DRAFT: N NATIONAL: N

COMMENT WAIVER: N

ACCEPT RETURN REJECT 4.21.10 DATE

ABSTRACT/SUMMARY COMMENTS:

**Entered in
The National Register
of
Historic Places**

RECOM./CRITERIA _____

REVIEWER _____ DISCIPLINE _____

TELEPHONE _____ DATE _____

DOCUMENTATION see attached comments Y/N see attached SLR Y/N

If a nomination is returned to the nominating authority, the nomination is no longer under consideration by the NPS.



PEOPLES NATIONAL BANK
MARION CO., IA
#1



PEOPLES NATIONAL BANK
MARION CO., IA
#2



PEOPLES NATIONAL BANK
MARION CO., IA
#3



PEOPLES NATIONAL BANK
MARION CO., IA
4



PEOPLES NATIONAL BANK
MARION CO., IA
#5



PEOPLES NATIONAL BANK
MARION CO., IA
#6



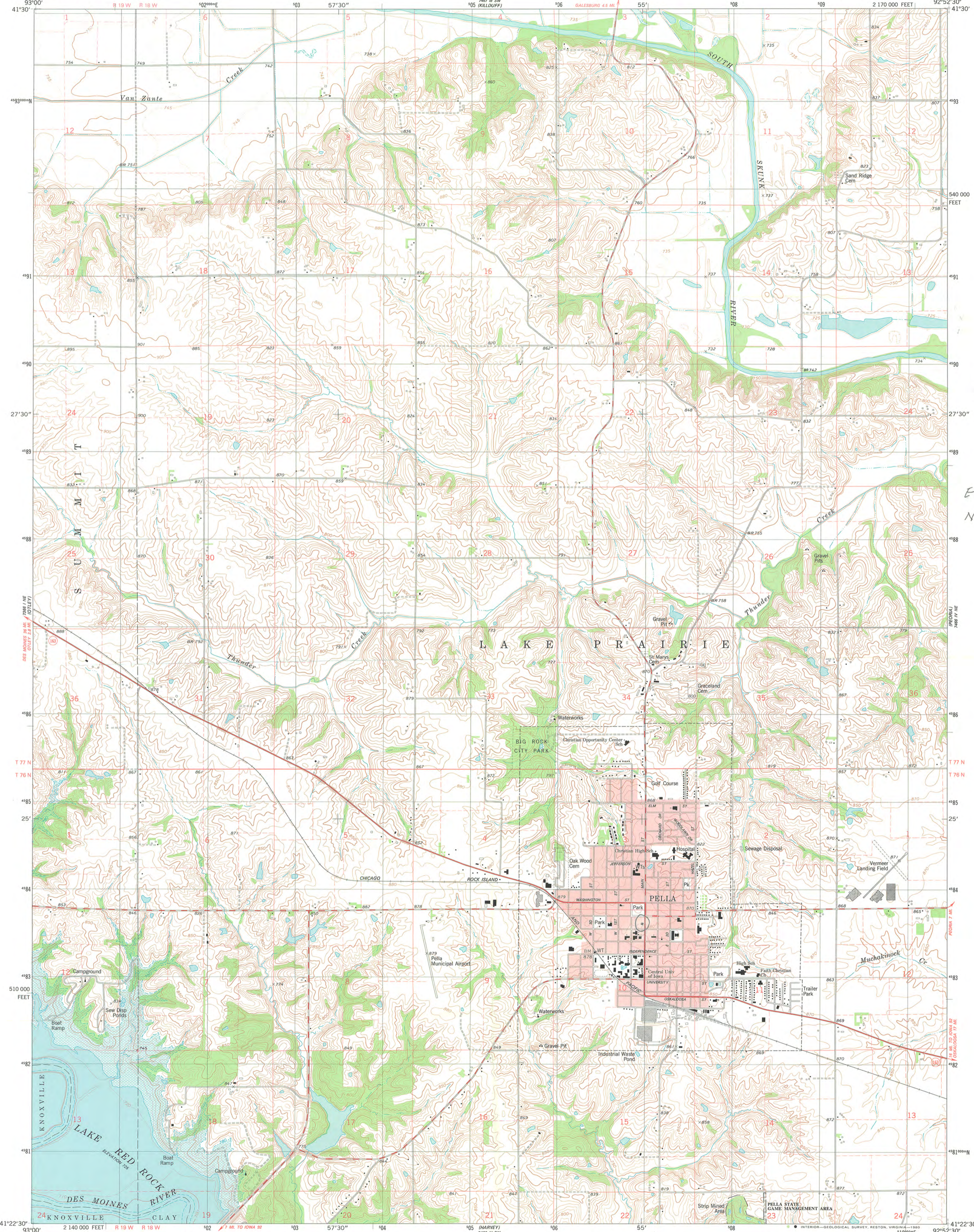
PEOPLES NATIONAL BANK
MARION CO., IA
#7



PEOPLES NATIONAL BANK
MARION CO., IA
#8



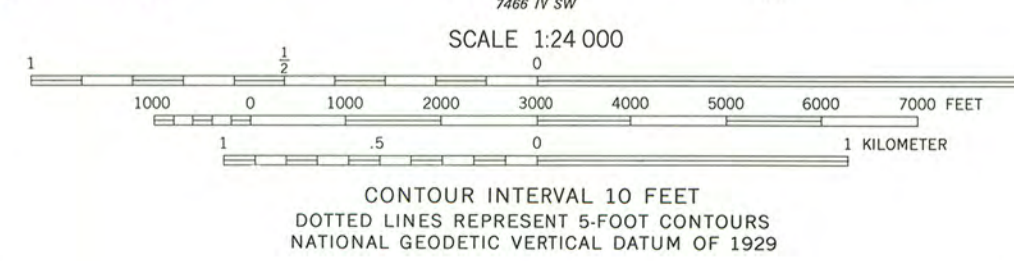
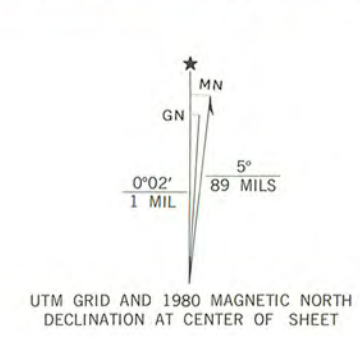
PEOPLES NATIONAL BANK
MARION CO., IA
#9



PELLA,
MARION
COUNTY,
IA

E 506990
N 4583630

Mapped, edited, and published by the Geological Survey
Control by USGS and NOS/NOAA
Topography by photogrammetric methods from aerial photographs
taken 1974. Field checked 1975. Map edited 1980
Projection and 10,000-foot grid ticks. Iowa coordinate
system, south zone (Lambert conformal conic)
1000-meter Universal Transverse Mercator grid, zone 15
1927 North American Datum
To place on the predicted North American Datum 1983
move the projection lines 3 meters north and
16 meters east as shown by dashed corner ticks
There may be private holdings within the boundaries of the
National or State reservations shown on this map
Areas covered by dashed light-blue pattern
are subject to controlled inundation
Red tint indicates area in which only landmark buildings are shown



ROAD CLASSIFICATION
Primary highway, hard surface
Secondary highway, hard surface
Light-duty road, hard or improved surface
Unimproved road
Interstate Route
U. S. Route
State Route

THIS MAP COMPLIES WITH NATIONAL MAP ACCURACY STANDARDS
FOR SALE BY U. S. GEOLOGICAL SURVEY, DENVER, COLORADO 80225, OR RESTON, VIRGINIA 22092
AND BY THE IOWA GEOLOGICAL SURVEY, IOWA CITY, IOWA 52240
A FOLDER DESCRIBING TOPOGRAPHIC MAPS AND SYMBOLS IS AVAILABLE ON REQUEST

PELLA, IOWA
NW4 PELLA 15' QUADRANGLE
N4122.5-W9252.5/7.5

1980
DMA 7466 IV NW-SERIES V876



March 3, 2010

Carol Shull, Chief
National Park Service
National Register of Historic Places
1201 Eye Street, N.W.-- 8th Floor
Washington, D.C. 20005

Dear Ms. Shull:

The following National Register nomination(s) are enclosed for your review and listed if acceptable.

- Peoples National Bank, 717 Main Street, Pella, Marion County, Iowa

Sincerely,

A handwritten signature in cursive script that reads "Elizabeth Foster Hill".

Elizabeth Foster Hill
Tax Incentive Programs Manager/
National Register Coordinator