



AQUEDUCT BRIDGE, CLAY COUNTY, INDIANA

JOHN WARNER

22 MARCH 1999

402 W. WASHINGTON STREET, INDIANAPOLIS, IN

SOUTH TRUSS (DOWNSTREAM) OF PONY

LOOKING NORTH/NORTHEAST

#1



AQUEDUCT BRIDGE, CLAY COUNTY, INDIANA

JOHN WARNEIZ

22 MARCH 1999

402 W. WASHINGTON STREET, INDIANAPOLIS, IN

SOUTH TRUSS, THROUGH SPAN; LOOKING NORTH

#2



AQUEDUCT BRIDGE, CLAY COUNTY, INDIANA

JOHN WARNER

22 MARCH 1999

402 W. WASHINGTON STREET, INDIANAPOLIS, IN

1917 CENTER PIER

#3



AQUEDUCT BRIDGE, CLAY COUNTY, INDIANA

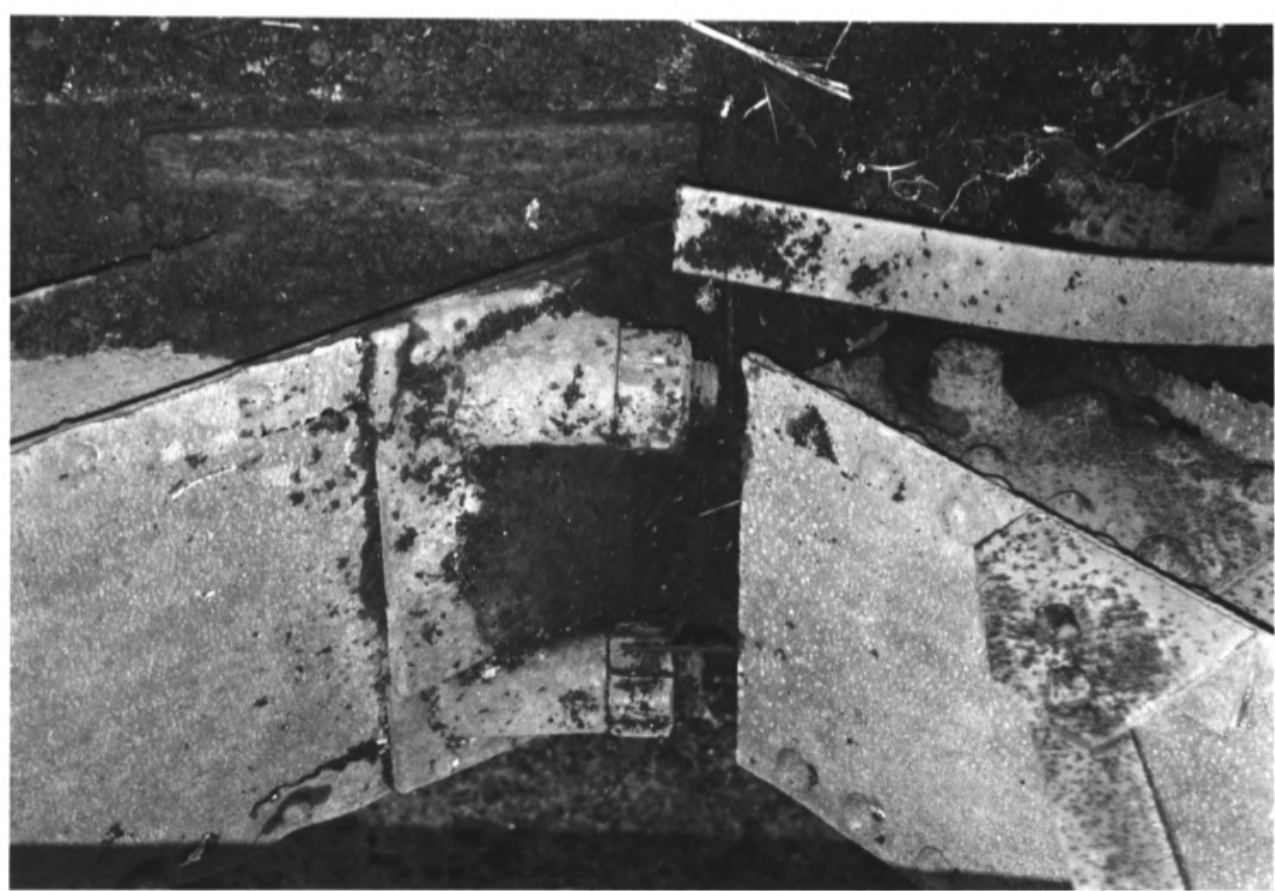
JOHN WARNER

22 MARCH 1999

402 W. WASHINGTON STREET, INDIANAPOLIS, IN

FLOOR I-BEAM, U-BOLT AND PIN CONNECTION, PONY TRUSS

#4



AQUEDUCT BRIDGE, CLAY COUNTY, INDIANA

JOHN WARNER

22 MARCH 1999

402 W. WASHINGTON STREET, INDIANAPOLIS, IN

VIEW OF PONY & THROUGH SPAN END POSTS ON CENTER PIER

#5



AQUEBUCT BRIDGE, CLAY COUNTY, INDIANA

JOHN WARNER

22 MARCH 1999

402 W. WASHINGTON STREET, INDIANAPOLIS, IN
WEST PORTAL OF THROUGH TRUSS; LOOKING EAST
6



AQUEDUCT BRIDGE, CLAY COUNTY, INDIANA

JOHN WARNER

22 MARCH 1999

402 W. WASHINGTON STREET, INDIANAPOLIS, IN

WEST ABUTMENT OF THROUGH SPAN, ENDPOST AND LOWER CHORD

#7



AQUEDUCT BRIDGE, CLAY COUNTY, INDIANA

JOHN WARNER

22 MARCH 1999

402 W. WASHINGTON STREET, INDIANAPOLIS, IN
I-BEAMS & STRINGERS OF THROUGH SPAN

#8



AQUEDUCT BRIDGE, CLAY COUNTY, INDIANA

JOHN WARNER

22 MARCH 1999

402 W. WASHINGTON STREET, INDIANAPOLIS, IN

I-BEAM (FLOOR) CONNECTION w/ VERTICAL IN THROUGH SPAN

#9