



1. Old San Antonio Hospital NOV 20 1979
2. Upland, California, *San Bernardino County, C.A.*
3. Loulie M. Sprague
4. May, 1979
5. Astara, Inc.
6. View from north
7. #1 *of 9*

DOE
JAN 2 1980



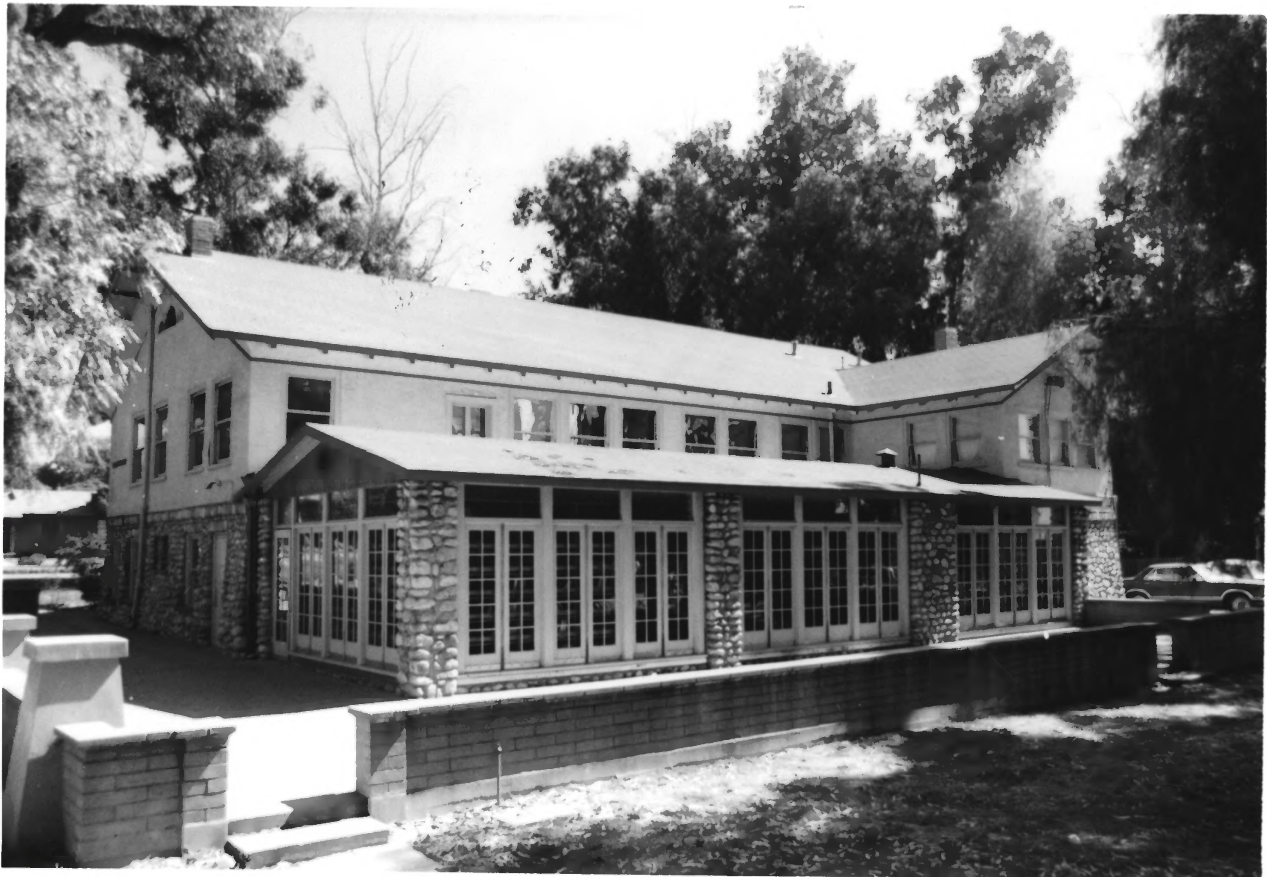
1. Old San Antonio Hospital NOV 20 1979
2. Upland, California, *San Bernardino County, CA.*
3. Loulie M. Sprague
4. May, 1979
5. Astara, Inc.
6. View from northeast
7. #20/9

DOE
JAN 2 1980



1. Old San Antonio Hospital NOV 20 1979
2. Upland, California, *San Bernardino County*
3. Loulie M. Sprague
4. May, 1979
5. Astara, Inc.
6. View from northwest
7. #3019

DOE
JAN 2 1980



1. Old San Antonio Hospital NOV 20 1979
2. Upland, California, *San Bernardino County*
3. Loulie M. Sprague
4. May, 1979
5. Astara, Inc.
6. View from southwest
7. #40/9

DOE
JAN 2 1980



NOV 20 1979

1. Old San Antonio Hospital

2. Upland, California

San Bernardino County

3. Loulie M. Sprague

4. May, 1979

5. Astara, Inc.

6. View from south

7. #5/9

DOE

JAN 2 1980



NOV 20 1979

1. Old San Antonio Hospital
2. Upland, California, *San Bernardino County*
3. Loulie M. Sprague
4. May, 1979
5. Astara, Inc.
6. View from southeast
7. #6/9

DOE

JAN 2 1980



NOV 20 1979

1. Old San Antonio Hospital
2. Upland, California, *San Bernardino County*
3. Loulie M. Sprague
4. May, 1979
5. Astara, Inc.
6. View of patio from north
7. *#70/9*

PDE
JAN 2 1980



NOV 20 1979

1. Old San Antonio Hospital
2. Upland, California, *San Bernardino County*
3. Loulie M. Sprague
4. May, 1979
5. Astara, Inc.
6. View of patio from south
7. #899

DOE
JAN 2 1980



NOV 20 1979

1. Old San Antonio Hospital
2. Upland, California, *San Bernardino County*
3. Loulie M. Sprague
4. May, 1979
5. Astara, Inc.
6. Interior view of French door
7. #999

DOE
JAN 2 1980