







100 DELAWARE AVENUE AND 105

BRIDGE VILLE HISTORIC DISTRICT

SUSSEX COUNTY, DE

PHOTO BY: ROBIN BODO, 12/93

NEG: DESHP6

FACING NORTHEAST, STREETSCAPE

PHOTO  2 OF 19



NONE SUCH FARMS (-53)  
201 SOUTH MAIN STREET  
BRIDGEVILLE HISTORIC DISTRICT  
SUSSEX COUNTY, DE

PHOTO BY: ROBIN BODC

NEG: DE SHPO

FACING EAST, WEST ELEVATION

PHOTO  3 OF 19





21, 1963 (32.00)

370-14 South Main Street  
DeSotoville Historic District  
Sussex County DE  
July 21, 1963  
1053  
Frank Smith, Street Scene  
Photography of DE





121 101 20 MARKET STREET (421, 390, 341)

DEPARTMENT Historic District

ESSEX COUNTY, DE

INSTD BY BOBBI BROWN, 12/93

NO. DE 1110

FACING WEST, STREETSCAPE

PHOTO 5 OF 11







FOR SALE  
BY APPOINTMENT  
CALL 1-800-555-1234

103 S. 307 500 MARKET STREET (42, 370, 387, 388)

BRIDGEVILLE HISTORIC DISTRICT

WILSON COUNTY, IN

PHOTO BY ROBIN BOCK, 12/93

NSA, IN SHPO

FACING EAST, STREETSCAPE

PHOTO BY 4/94



FARMERS SUPPLY SERVICE  
INC.



102 NORTH CANNON STREET (.381)

BRIDGEVILLE HISTORIC DISTRICT

SUSSEX COUNTY, DE

PHOTO BY: ROBIN BODO, 12/93

NEG: DE SHPO

FACING SOUTHWEST, EAST ELEVATION

PHOTO  8 OF 19

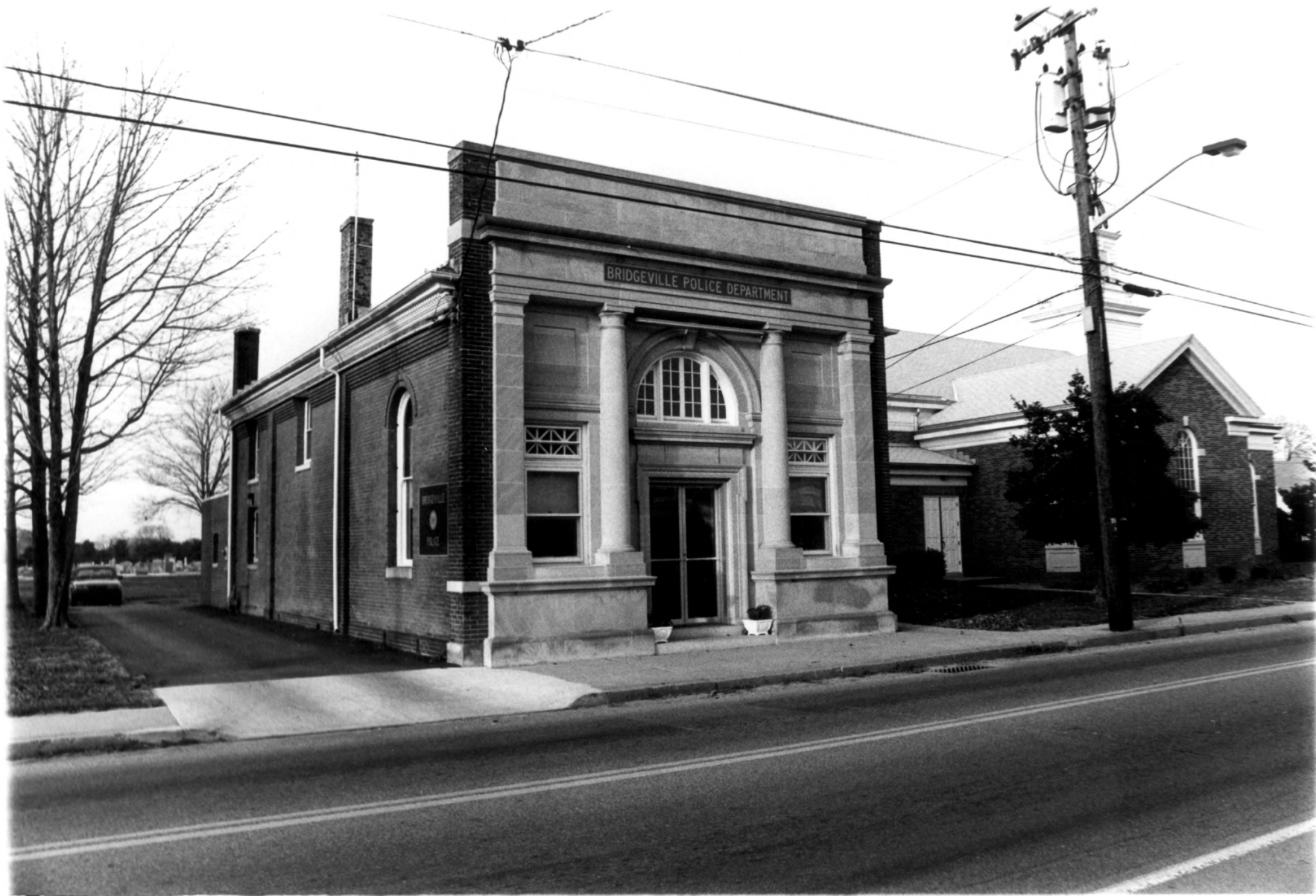


1875  
1876  
1877  
1878  
1879  
1880  
1881  
1882  
1883  
1884  
1885  
1886  
1887  
1888  
1889  
1890  
1891  
1892  
1893  
1894  
1895  
1896  
1897  
1898  
1899  
1900









BRIDGEVILLE POLICE DEPARTMENT

BRIDGEVILLE  
POLICE

INVESTMENT REPORT [unclear] [unclear] [unclear] [unclear]

RESEARCH AND ANALYSIS REPORT

JANUARY 2000

PREPARED BY [unclear] [unclear] [unclear]

NEW YORK, NY

FOR THE [unclear] [unclear] [unclear]

FIGURE 1



1. The number of people who  
attended the meeting was  
approximately 100.

2. The number of people who  
attended the meeting was  
approximately 100.

3. The number of people who  
attended the meeting was  
approximately 100.



North side of the 500 block of Chicago Street (18, 19, 20, 21, 22, 23, 24, 25)

BRIDGEMAN HOUSE, 1800

SUBJECT MATTER, 18

PHOTO BY JOHN BROWN, 1893

SEE 18 DATE

PACIFIC, NORTHWEST, STREETScape

PHOTO 1893





300 W. 12th Avenue  
Boulder, Colorado 80502  
Phone: 440-1234  
Fax: 440-5678  
www.boulder.com



THE STATE OF CALIFORNIA  
COUNTY OF SAN DIEGO  
I, the undersigned, Clerk of the Court,  
do hereby certify that the within and  
above described instrument is a true and  
correct copy of the original as the same  
appears in the records of the County of  
San Diego.



200 MARKET STREET  
BRIDGEVILLE HISTORIC DISTRICT  
SUSSEX COUNTY, DE

Photo By: Robin Bado 12/93

NEG: DE 1SHPO

FACING NORTH, SOUTH ELEVATION

PHOTO  16 OF 19





206 MARKET STREET

BRIDGEVILLE HISTORIC DISTRICT

SUSSEX COUNTY, DE

PHOTO BY: ROBIN BODO, 12/93

NEG: DE SHPO

FACING NORTH, SOUTH ELEVATION

PHOTO  17 OF 19



211.315, 315 BELMONT AVENUE, (N.W.), 195, (198)

WINDSORVILLE HISTORIC DISTRICT

SUSSEX COUNTY, DE

PHOTO BY: [unclear] 1983

REF. TO PHOTO

VIEWS SOUTH EAST, STREETSCAPE

PHOTO OF 19





507 DELAWARE AVENUE C 1903

DELAWARE HISTORICAL DISTRICT

SUSSEX COUNTY, DE

Drawn by John Beck, 1913

MS. DE 2000

Facing North East, with house on right

Photo 4 of 19