



Willow Hill

Daviess County, Ky.

Bill Hearn, Sept. 1981

Heritage Division

MAY 28 1982

Photo 1 of 11

Main house, looking northwest.



Willow Hill

Daviess County, Ky.

Bill Hearn, Sept. 1981

Heritage Division

MAY 28 1982

Photo 2 of 11

East elevation. Front facade (east elevation) of main house.



Willow Hill

Daviess County, Ky.

Bill Hearn, September 1981

Heritage Division

Photo 3 of 11

MAY 28 1982

View of rear (west wall) of house and  
root cellar.



Willow Hill

Daviess County, Ky.

Bill Hearn, September 1981

Heritage Division

Photo 4 of 11

North wall of main house.

MAY 28 1982





Willow Hill

Daviess County, Ky.

Tom Blue 1974

Route 1, Owensboro

Photo 5 of 11

MAY 28 1982

North wall of one-story log section



Willow Hill

Daviess County, Ky

Tom Blue 1974

Route 1, Owensboro

Photo 6 of 11

South wall of left parlor of two-story  
block.

MAY 28 1982



MAY 28 1982

Willow Hill

Daviess County, Ky.

Bill Hearn, September 1981

Heritage Division

Photo 7 of 11

c.1890 tobacco barn looking south.



Willow Hill

Daviess County, Ky.

Bill Hearn, September 1981

Heritage Division

Photo 8 of 11

MAY 28 1982

c.1890 tobacco barn east side.





Willow Hill

Daviess County, Ky.

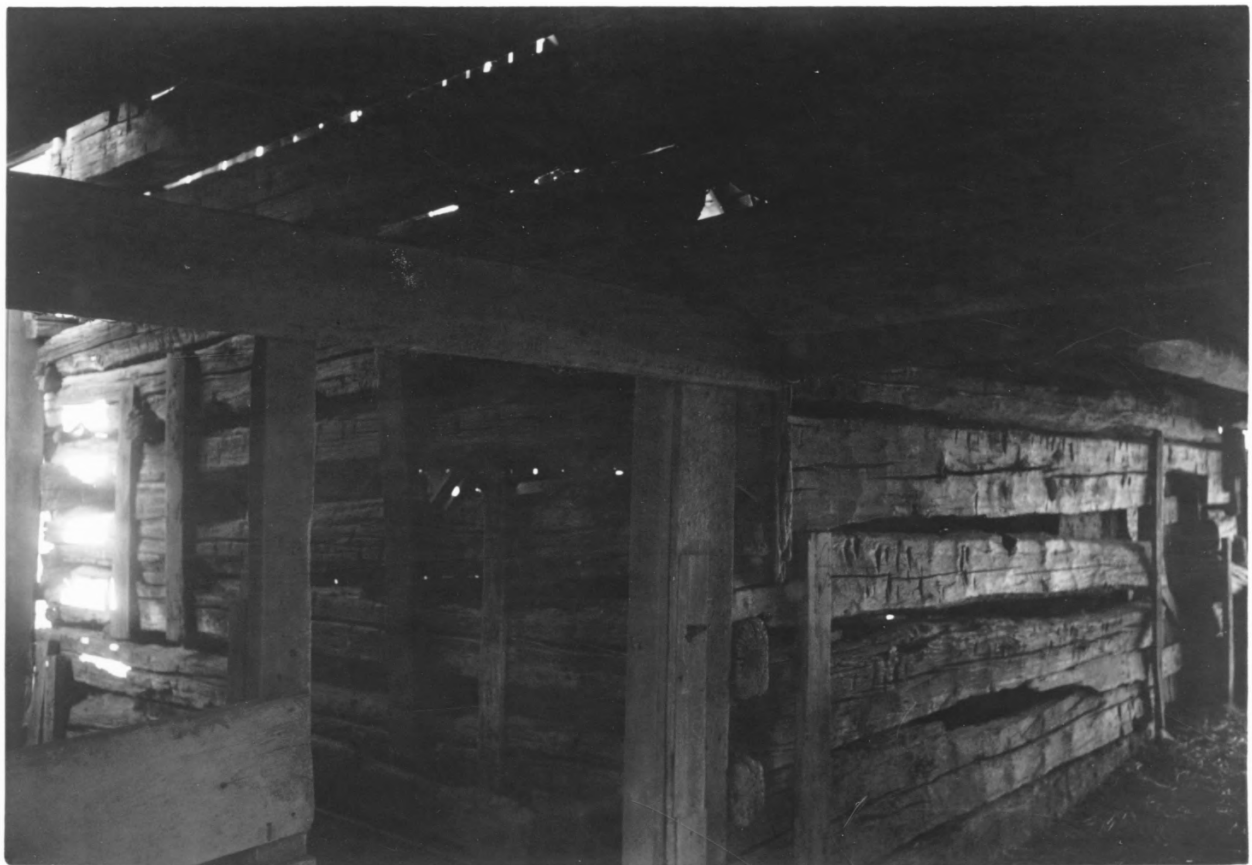
Bill Hearn, September 1981

Heritage Division

Photo 9 of 11

c. 1890 barn west side

MAY 28 1982



Willow Hill

Daviess County, Ky.

Bill Hearn, September 1981

Heritage Division

Photo 10 of 11

Interior of livestock barn.

MAY 28 1982



Willow Hill

Daviess County, Ky.

Bill Hearn, September 1981

Heritage Division

Photo 11 of 11

MAY 28 1982

Interior of livestock barn.