



Frank M. Spalding House (LC13:D5-463)

Lincoln, Lancaster County, NE

Photo by Matt Hansen, Oct. 20, 1998

Negative: Lincoln/Lancaster County Planning Dept.

View to SE of east (left) and north (right) facades.

Photo 1 of 7



Frank M. Spalding House (LC13:05-463)

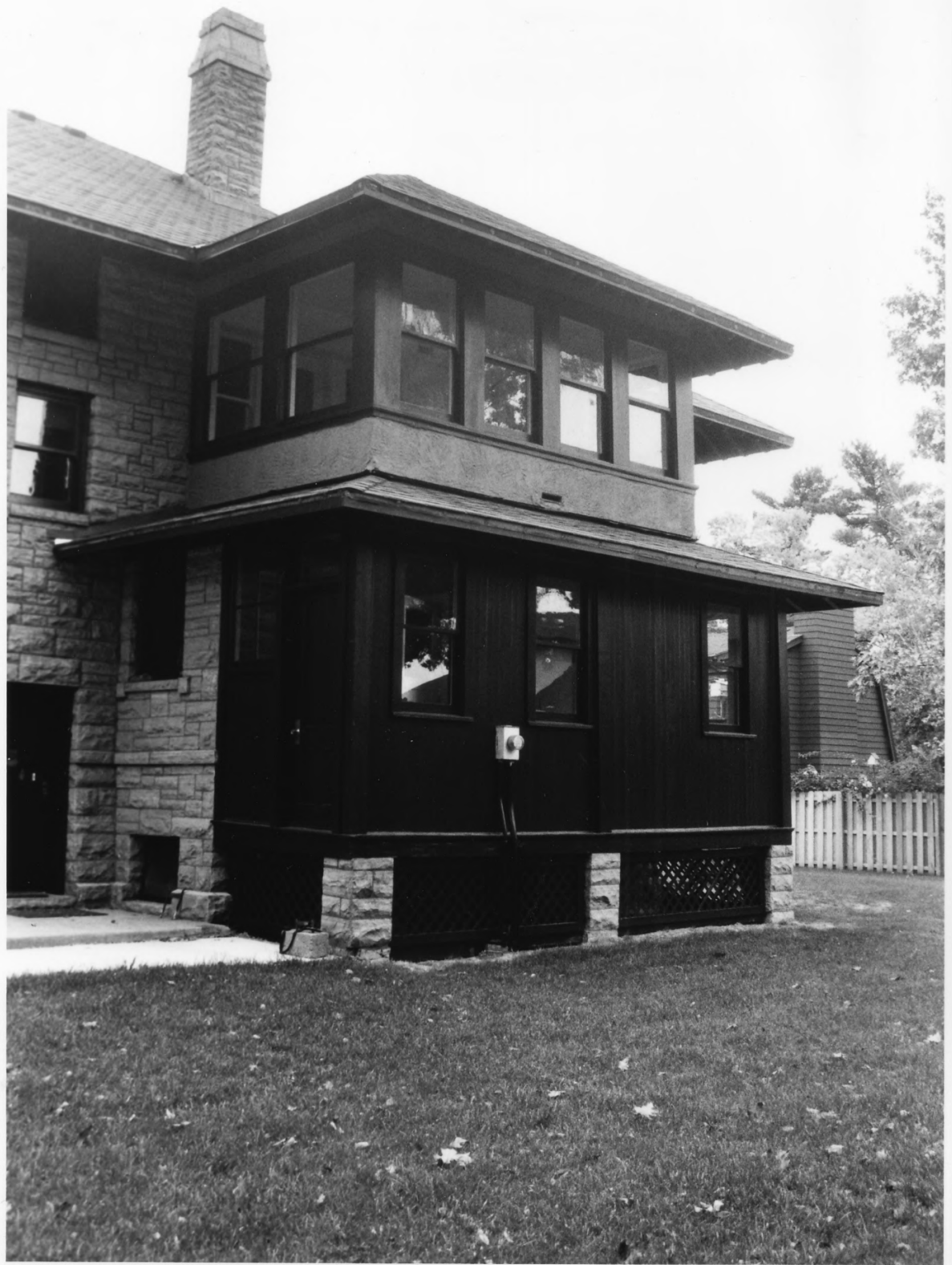
Lincoln, Lancaster County, NE

Photo by Matt Hansen, Oct. 20, 1998

Negative: Lincoln/Lancaster County Planning Dept

View to NW of south porch

Photo 2 of 7



Frank M. Spalding House (LC13: D5-463)

Lincoln, Lancaster County, NE

Photo by Matt Hansen, Oct. 20, 1998

Negative; Lincoln/Lancaster County Planning Dept,  
View to SE of west facade

Photo 3 of 7



Frank M. Spalding House, (LC13; D5-463)

Lincoln, Lancaster County, NE

Photo by Matt Hansen, Oct. 20, 1998

Negative: Lincoln/Lancaster County Planning Dept.

View of principal east entryway, facing W

Photo 4 of 7





Frank M. Spalding House, (LC13:D5-463)

Lincoln, Lancaster County, ME

Photo by Matt Hansen, Oct. 20, 1998

Negative: Lincoln/Lancaster County Planning Dept.

View of entry hall and main staircase, facing W

Photo 5 of 7



Frank M. Spalding House, (LC13:D5-4G3)

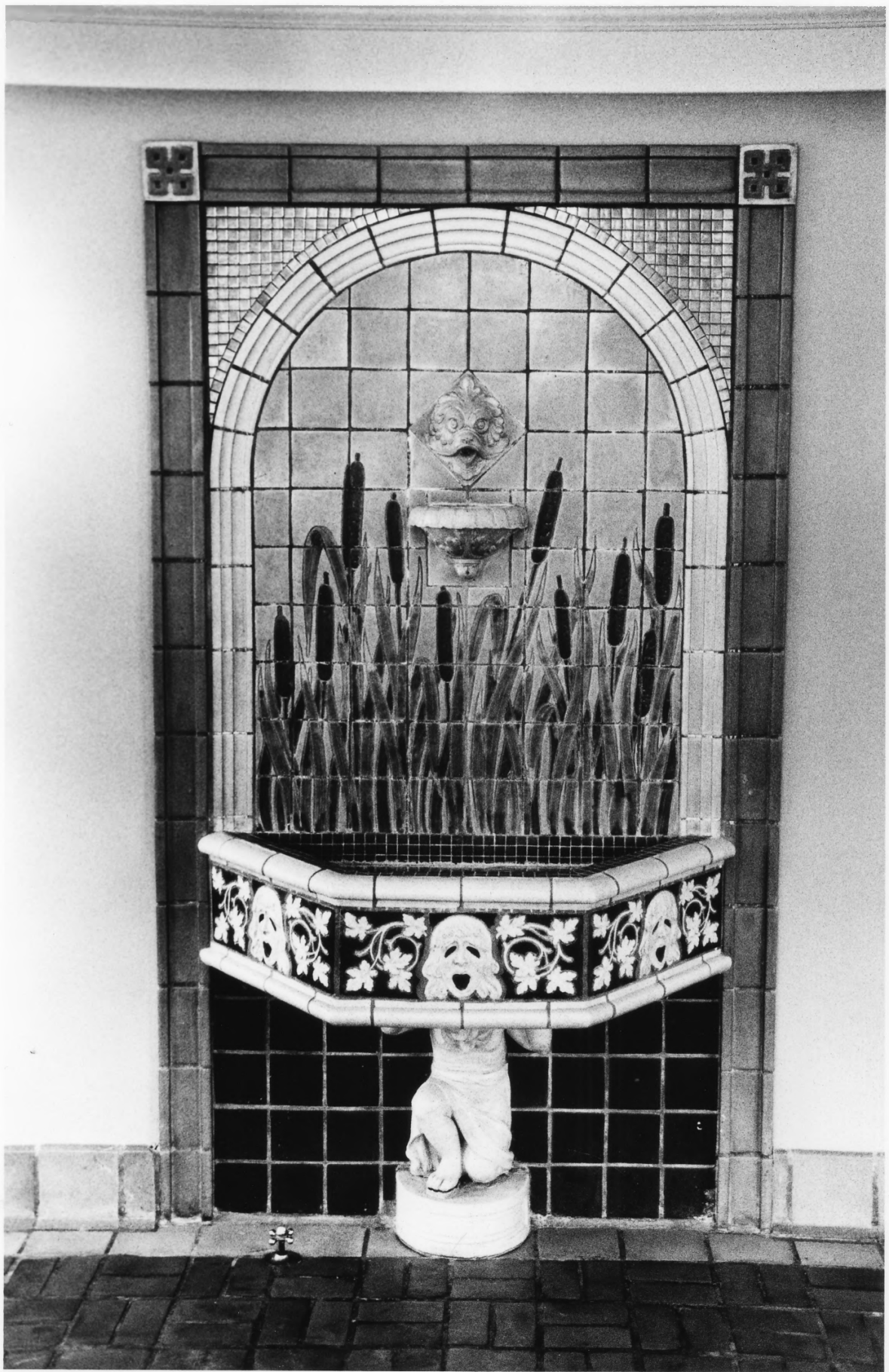
Lincoln, Lancaster County, ME

Photo by Matt Hansen, Oct 20, 1998

Negative: Lincoln/Lancaster County Planning Dept.

Detail of built-in buffet in dining room, facing NW

Photo 6 of 7



Frank M. Spalding House, (LC13:D5-463)

Lincoln, Lancaster County, ME

Photo by Matt Hansen, Oct 20, 1998

Negative: Lincoln/Lancaster County Planning Dept.

Detail of terra-cotta wall fountain in south sun porch,  
facing N

Photo 7 of 7