



21B

NAME: Nez Perce camp from  
Howitzer Capture Site

LOCATION: Big Hole National Battlefield, MT

PHOTOGRAPHER: Dennis Glick

DATE: August 1983

LOCATION OF NEGATIVE: National Park Service,  
Rocky Mountain Regional Office, Denver, CO

VIEW: Northeast

PHOTO NUMBER: 1



NAME: Nez Perce Camp (overview)

LOCATION: Big Hole National Battlefield, MT

PHOTOGRAPHER: Dennis Glick

DATE: August 1983

LOCATION OF NEGATIVE: National Park Service,  
Rocky Mountain Regional Office, Denver, CO

VIEW: North

PHOTO NUMBER: 2



20A

NAME: Nez Perce camp in foreground, bald  
hillside where Nez Perce horses grazed  
LOCATION: Big Hole National Battlefield, MT  
PHOTOGRAPHER: Dennis Glick  
DATE: August 1983  
LOCATION OF NEGATIVE: National Park Service,  
Rocky Mountain Regional Office, Denver, CO  
VIEW: West  
PHOTO NUMBER: 3



NAME: Nez Perce Camp

LOCATION: Big Hole National Battlefield, MT

DATE: August 1983

PHOTOGRAPHER: Dennis Glick

LOCATION OF NEGATIVE: National Park Service,  
Rocky Mountain Regional Office, Denver, CO

VIEW: North

PHOTO NUMBER: 4





NAME: Nez Perce Camp

LOCATION: Big Hole National Battlefield, MT

DATE: August 1983

PHOTOGRAPHER: Dennis Glick

LOCATION OF NEGATIVE: National Park Service,  
Rocky Mountain Regional Office, Denver, CO

VIEW: South

PHOTO NUMBER: 5



NAME: Battle Mountain (overview)

Siege Area to left--Nez Perce Camp to right

LOCATION: Big Hole National Battlefield, MT

PHOTOGRAPHER: Dennis Glick

DATE: August 1983

LOCATION OF NEGATIVE: National Park Service,

Rocky Mountain Regional Office, Denver, CO

VIEW: Northwest from Visitor Center

PHOTO NUMBER: 6



NAME: Siege Area (overview)

LOCATION: Big Hole National Battlefield, MT

PHOTOGRAPHER: Dennis Glick

DATE: August 1983

LOCATION OF NEGATIVE: National Park Service,

Rocky Mountain Regional Office, Denver, CO

VIEW: Northwest from Visitor Center

PHOTO NUMBER: 7



29 B

NAME: Siege Area  
LOCATION: Big Hole National Battlefield, MT  
PHOTOGRAPHER: Dennis Glick  
DATE: August 1983  
LOCATION OF NEGATIVE: National Park Service,  
Rocky Mountain Regional Office, Denver, CO  
VIEW: Looking north  
PHOTO NUMBER: 8





6. 11. 12

NAME: Three Nez Perce positions in  
southwest side of siege area

LOCATION: Big Hole National Battlefield, MT

PHOTOGRAPHER: Dennis Glick

DATE: August 1983

LOCATION OF NEGATIVE: National Park Service,  
Rocky Mountain Regional Office, Denver, CO

VIEW: Northwest

PHOTO NUMBER: 9



NAME: Siege Area--Nez Perce position  
in foreground; soldier position in rear  
LOCATION: Big Hole National Battlefield, MMT  
PHOTOGRAPHER: Dennis Glick  
DATE: August 1983  
LOCATION OF NEGATIVE: National Park Service,  
Rocky Mountain Regional Office, Denver, CO  
VIEW: Southwest  
PHOTO NUMBER: 10



18  
(0)

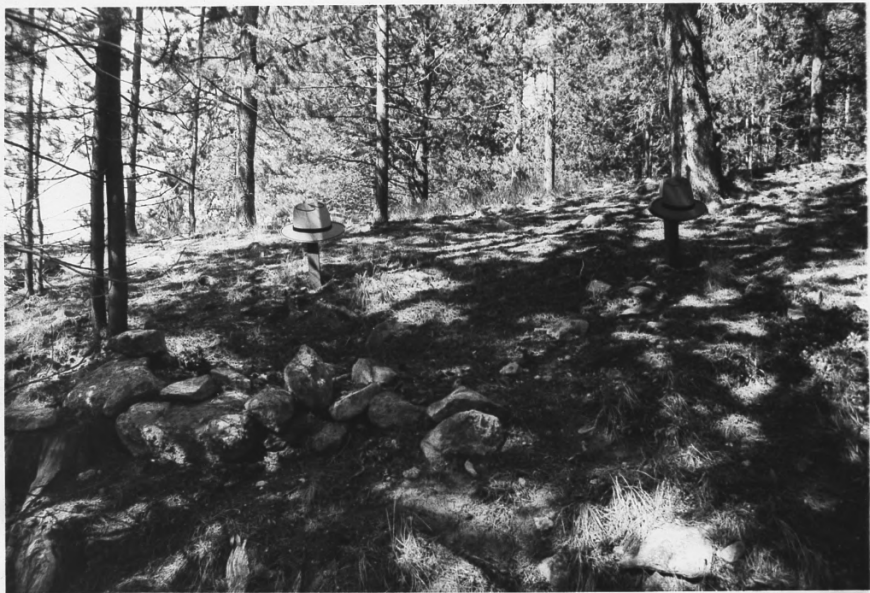
NAME: Volunteer positions and shallow trenches  
in Siege Area  
LOCATION: Big Hole National Battlefield, MT  
PHOTOGRAPHER: Dennis Glick  
DATE: August 1983  
LOCATION OF NEGATIVE: National Park Service,  
Rocky Mountain Regional Office, Denver, CO  
VIEW: Northwest  
PHOTO NUMBER: 11



24A

NAME: Soldier postions in siége area-  
shallow trenches visible  
LOCATION: Big Hole National Battlefield, MT  
PHOTOGRAPHER: Dennis Glick  
DATE: August 1983  
LOCATION OF NEGATIVE: National Park Service,  
Rocky Mountain Regional Office, Denver, CO  
VIEW: Northeast  
PHOTO NUMBER: 12





NAME: Soldier/civilian volunteer  
positions in Siege Area

LOCATION: Big Hole National Battlefield, MT

PHOTOGRAPHER: Dennis Glick

DATE: August 1983

LOCATION OF NEGATIVE: National Park Service,  
Rocky Mountain Regional Office, Denver, CO

VIEW: Southwest

PHOTO NUMBER: 13



NAME: Howitzer replica at capture site  
LOCATION: Big Hole National Battlefield, MT  
PHOTOGRAPHER: Dennis Glick  
DATE: August 1983  
LOCATION OF NEGATIVE: National Park Service,  
Rocky Mountain Regional Office, Denver, CO  
VIEW: Northeast  
PHOTO NUMBER: 14



NAME: Soldier Monument

LOCATION: Big Hole National Battlefield, MT

PHOTOGRAPHER: Dennis Glick

DATE: August 1983

LOCATION OF NEGATIVE: National Park Service,  
Rocky Mountain Regional Office, Denver, CO

VIEW: Northwest

PHOTO NUMBER: 15

TO  
THE OFFICERS AND SOLDIERS OF THE ARMY  
AND  
CITIZENS OF MONTANA  
WHO FELL AT  
BIG HOLE  
AUGUST 31<sup>ST</sup> 1877  
IN BATTLE WITH NEZ-PERCE INDIANS.

321  
NAME: Soldier Monument

LOCATION: Big Hole National Battlefield, MT

PHOTOGRAPHER: Dennis Glick

DATE: August 1983

LOCATION OF NEGATIVE: National Park Service,  
Rocky Mountain Regional Office, Denver, CO

VIEW: North

PHOTO NUMBER: 16



ON THIS FIELD

17 OFFICERS AND 138 ENLISTED MEN OF

THE 7TH. U. S. INFANTRY

UNDER ITS COLONEL

BVT. MAJOR GENERAL JOHN GIBBON WITH 8 OTHER

SOLDIERS AND 36 CITIZENS

SURPRISED AND FOUGHT ALL DAY A SUPERIOR

FORCE OF NEZ-PERCÉ INDIANS

MORE THAN ONE-THIRD OF THE COMMAND BEING

KILLED AND WOUNDED

NAME: Soldier Monument

LOCATION: Big Hole National Battlefield, MT

PHOTOGRAPHER: Dennis Glick

DATE: August 1983

LOCATION OF NEGATIVE: National Park Service,  
Rocky Mountain Regional Office, Denver, CO

VIEW: West

PHOTO NUMBER: 17

KILLED

CAPTAIN WILLIAM LOGAN

1ST. LIEUT. JAMES H. CHAPLEY 1ST. LIEUT. WILLIAM L. ENGLISH

1ST. SERGT. ROBERT L. EGGERTS CO. C. 1ST. SERGT. FREDERICK STORTZ CO. K.

SERGT. MICHAEL HOGAN CO. L. SERGT. WM. H. MARTIN CO. G.

SERGT. WM. W. WATSON CO. F.

CORPORAL WM. H. PAYNE CO. D. CORPORAL ROBT. E. SAFF CO. C.

CORPORAL DANIEL McCAFFERTY CO. I. CORPORAL DOMINICK O'DONNAN CO. D.

CORPORAL JACOB EISENHUT CO. U.

MUSICIAN MICHAEL CALLAGHAN CO. D. MUSICIAN THOMAS STINEBAUGH CO. J.

ARTIFICER JOHN KLEIS CO. K.

PROBATES MATTHEW SUTTERLY CO. E. WILLIAM D. PHEEDY CO. F.

JAMES McSHANE CO. F. JOHN D. O'BRIEN CO. C.

COTT OR MAUZ CO. M. McKEON L. DEANE CO. H.

HERMANN BROETZ CO. T. JOHN E. SMITH CO. A.

SERGT. EDWARD FACE CO. L. 2ND. CAVALRY.

H. S. BUSTICK. POST GUIDE AT FORT SHERIDAN.

CITIZEN VOLUNTEERS

L. E. ELLIOTT. JOHN ARMSTRONG. DAVID MORROW.

ALVIN LACKWOOD. CAMPBELL MITCHELL.

34A

NAME: Soldier Monument

LOCATION: Big Hole National Battlefield, MT

PHOTOGRAPHER: Dennis Glick

DATE: August 1983

LOCATION OF NEGATIVE: National Park Service,  
Rocky Mountain Regional Office, Denver, CO

VIEW: East

PHOTO NUMBER: 18

ERECTED BY THE UNITED STATES

35A

NAME: Soldier Mounment

LOCATION: Big Hole National Battlefield, MT

PHOTOGRAPHER: Dennis Glick

DATE: August 1983

LOCATION OF NEGATIVE: National Park Service,  
Rocky Mountain Regional Office, Denver, CO

VIEW: South

PHOTO NUMBER: 19