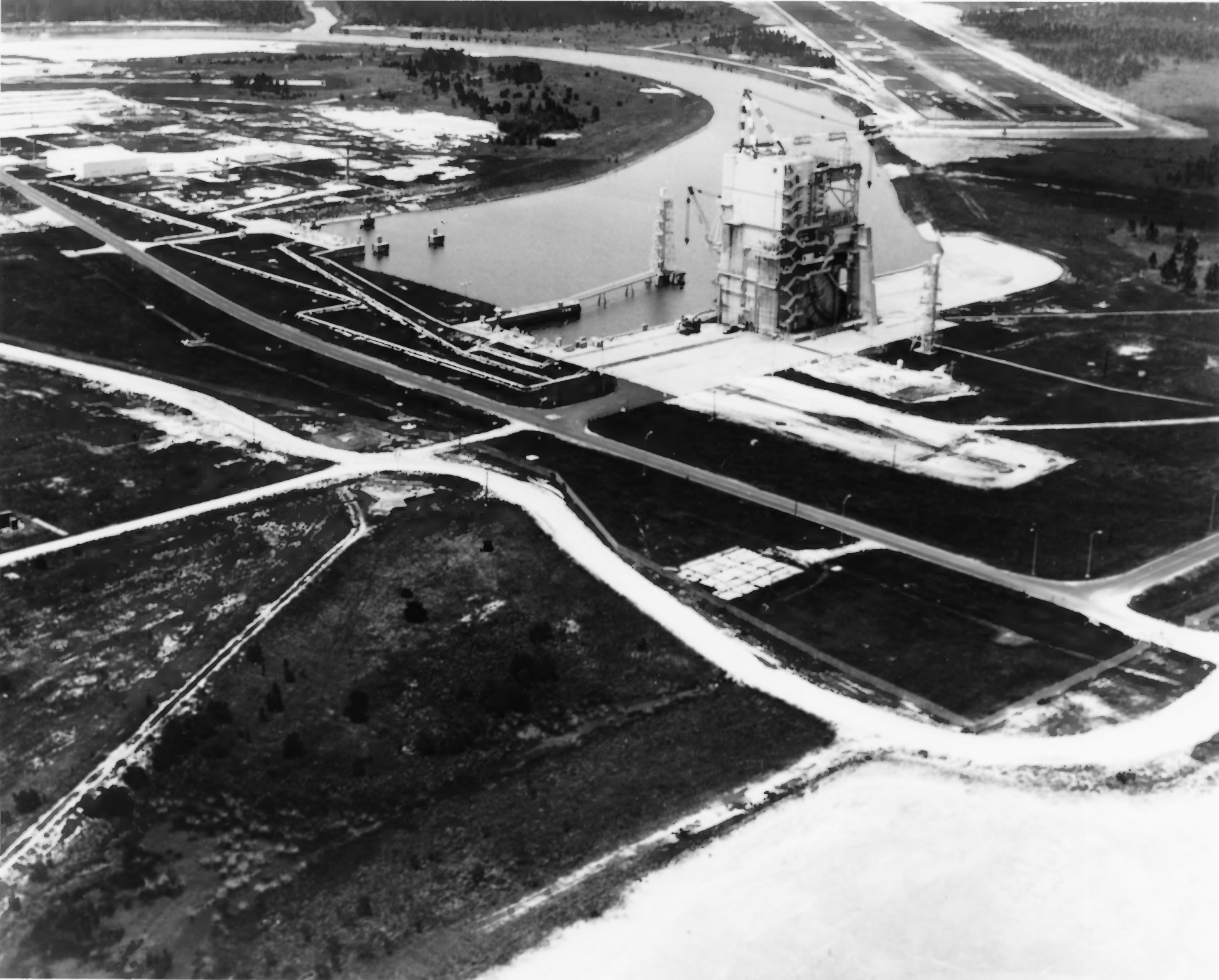




1. Rocket Propulsion Test Complex B-1/B-2
2. Bay St. Louis, Mississippi
3. NASA
4. 1973
5. Marshall Space Flight Center, Facilities Office
6. Aerial View of B-1/B-2 Test Stand
7. 28

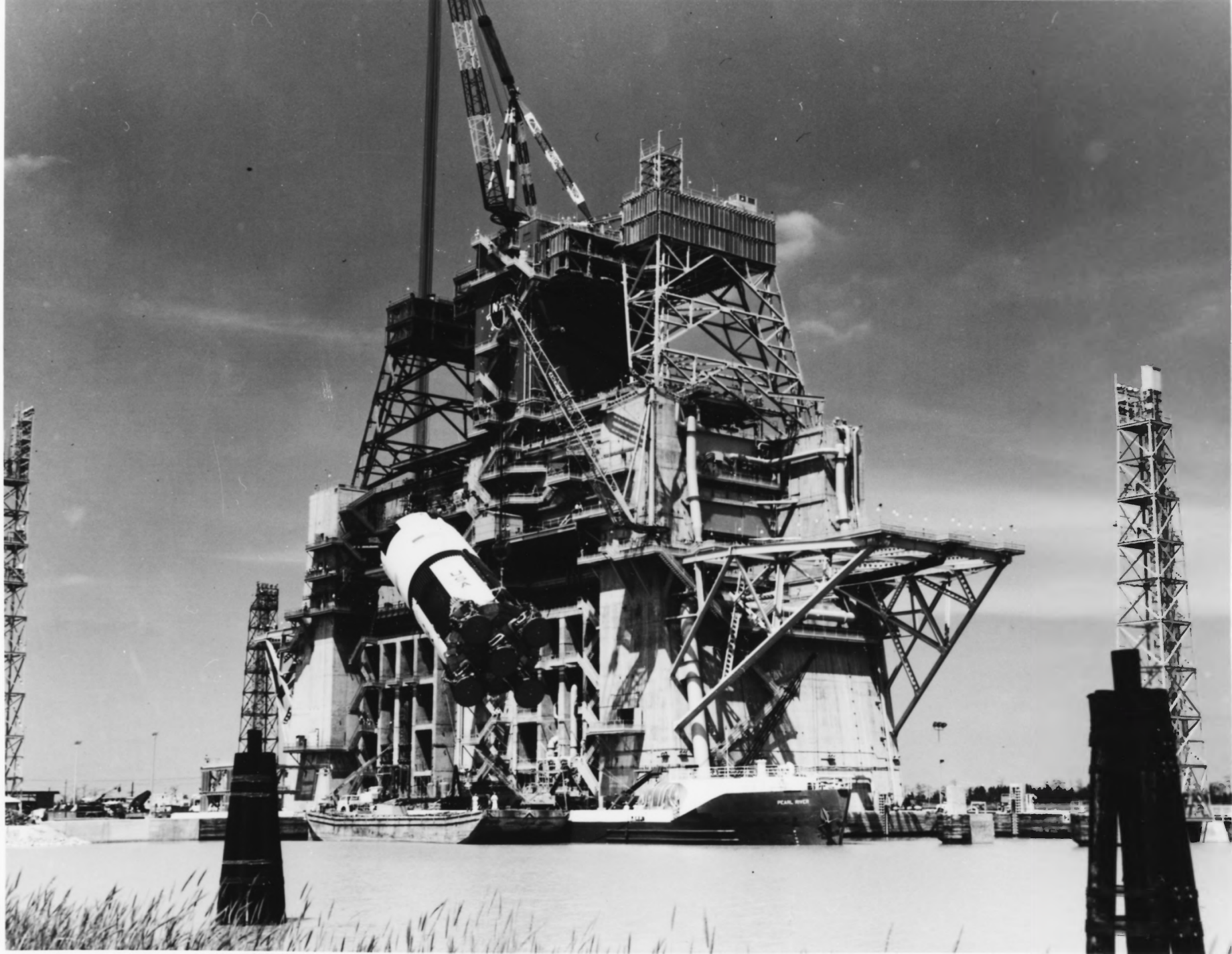


1. Rocket Propulsion Test Complex
2. Bay St. Louis, Mississippi
3. NASA
4. 1973.
5. NASA, Marshall Space Flight Center Facilities Office
6. Aerial View of A-2 Test Stand
7. 35



1. Rocket Propulsion Test Complex A-1
2. Bay St. Louis, Mississippi
3. NASA
4. 1967
5. NASA, Marshall Space Flight Center Facilities Office
6. A-1 Test Stand with Saturn V S-11 stage in place ready for firing.
7. 33

251



S-IC TEST STAND AT MISSISSIPPI TEST FACILITY
(NSTL)

S-IC STAGE BEING OFF-LOADED FROM
BARGE "PEARL RIVER".

NASA - NSTL (NATIONAL SPACE
TECHNOLOGY LABORATORIES)



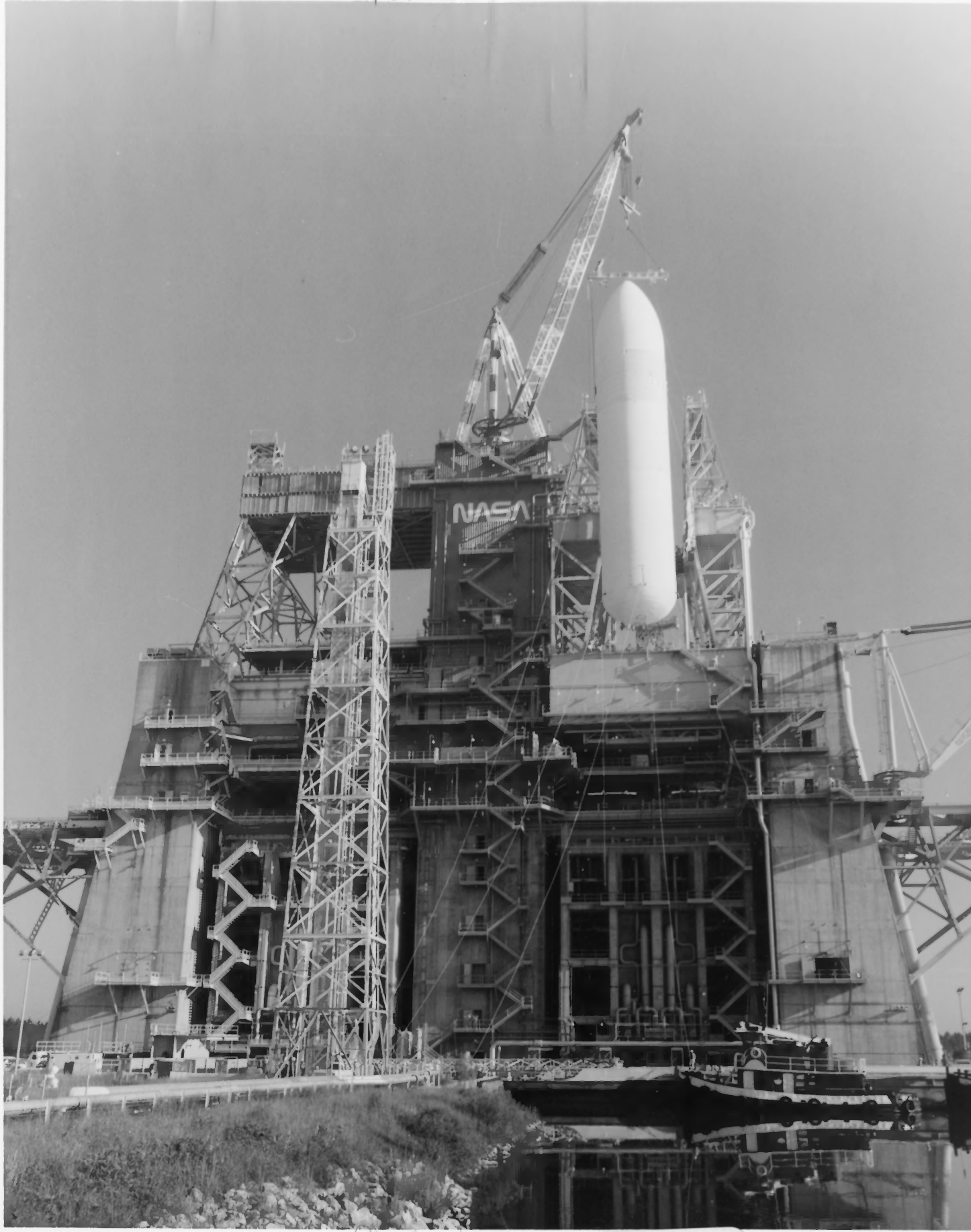
1. Rocket Propulsion Test Complex A-2
2. Bay St. Louis, Mississippi
3. NASA
4. 1966
5. NSTL Facilities Office
6. Installation of S-11 stage of Saturn V Rocket in
A-2 Test Stand
7. 34



1. Rocket Propulsion Test Complex B-1/B-2
2. Bay St. Louis, Mississippi
3. NASA
4. 1967
5. NSTL Facilities Office
6. Test of Saturn V 1st stage booster
7. 30



1. Rocket Propulsion Test Complex A-1
2. Bay St. Louis, Mississippi
3. NASA
4. 1971
5. NSTL Facilities Office
6. Exterior View of A-1 Test Stand
7. 32



1. Rocket Propulsion Test Complex B-1/B-2
2. Bay St. Louis, Mississippi
3. NASA
4. 1977
5. NSTL Facilities Office
6. External Tank of Space Shuttle being hoisted into test stand
7. 31