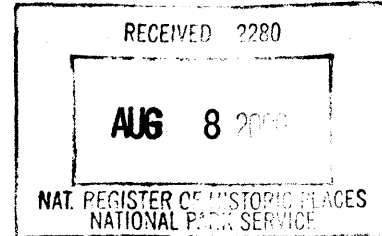


United States Department of the Interior  
National Park Service

**National Register of Historic Places  
Registration Form**

MAR 22 2002

1055  
resub



This form is for use in nominating or requesting determinations for individual properties and districts. See instructions in *How to Complete the National Register of Historic Places Registration Form* (National Register Bulletin 16A). Complete each item by marking "x" in the appropriate box or by entering the information requested. If an item does not apply to the property being documented, enter "N/A" for "not applicable." For functions, architectural classification, materials, and areas of significance, enter only categories and subcategories from the instructions. Place additional entries and narrative items on continuation sheets (NPS Form 10-900a). Use a typewriter, word processor, or computer, to complete all items.

**1. Name of Property**

historic name Carr Junior High School

other names/site number Carr Central High School

**2. Location**

street & number 1805 Cherry Street  not for publication

city or town Vicksburg  vicinity

state MS code 28 county Warren code 149 zip code 39180

**3. State/Federal Agency Certification**

As the designated authority under the National Historic Preservation Act, as amended, I hereby certify that this  nomination  request for determination of eligibility meets the documentation standards for registering properties in the National Register of Historic Places and meets the procedural and professional requirements set forth in 36 CFR Part 60. In my opinion, the property  meets  does not meet the National Register criteria. I recommend that this property be considered significant  nationally  statewide  locally. ( See continuation sheet for additional comments.)

Kenneth H. P. Paul JUNE 30, 2000  
Signature of certifying official/Title Date

Deputy State Historic Preservation Officer  
State of Federal agency and bureau

In my opinion, the property  meets  does not meet the National Register criteria. ( See continuation sheet for additional comments.)

\_\_\_\_\_  
Signature of certifying official/Title Date

\_\_\_\_\_  
State or Federal agency and bureau

**4. National Park Service Certification**

I hereby certify that the property is:

<input type="checkbox"/> entered in the National Register. <input type="checkbox"/> See continuation sheet.	Signature of the Keeper	Date of Action
<input type="checkbox"/> determined eligible for the National Register <input type="checkbox"/> See continuation sheet.	_____	_____
<input type="checkbox"/> determined not eligible for the National Register.	_____	_____
<input type="checkbox"/> removed from the National Register.	_____	_____
<input type="checkbox"/> other, (explain:)	_____	_____

5. Classification

Ownership of Property  
(Check as many boxes as apply)

- private
- public-local
- public-State
- public-Federal

Category of Property  
(Check only one box)

- building(s)
- district
- site
- structure
- object

Number of Resources within Property  
(Do not include previously listed resources in the count.)

Contributing	Noncontributing	
1	0	buildings
		sites
		structures
		objects
1	0	Total

Name of related multiple property listing  
(Enter "N/A" if property is not part of a multiple property listing.)

Number of contributing resources previously listed  
in the National Register

Historic Resources of Vicksburg, Mississippi 0

6. Function or Use

Historic Functions  
(Enter categories from instructions)

EDUCATION/school  
\_\_\_\_\_  
\_\_\_\_\_  
\_\_\_\_\_  
\_\_\_\_\_  
\_\_\_\_\_  
\_\_\_\_\_

Current Functions  
(Enter categories from instructions)

VACANT/NOT IN USE  
\_\_\_\_\_  
\_\_\_\_\_  
\_\_\_\_\_  
\_\_\_\_\_  
\_\_\_\_\_  
\_\_\_\_\_

7. Description

Architectural Classification  
(Enter categories from instructions)

Tudor Gothic  
\_\_\_\_\_  
\_\_\_\_\_

Materials  
(Enter categories from instructions)

foundation brick, concrete  
walls brick  
\_\_\_\_\_  
roof tar  
other \_\_\_\_\_  
\_\_\_\_\_

Narrative Description

(Describe the historic and current condition of the property on one or more continuation sheets.)

8. Statement of Significance

Applicable National Register Criteria

(Mark "x" in one or more boxes for the criteria qualifying the property for National Register listing.)

- A Property is associated with events that have made a significant contribution to the broad patterns of our history.
- B Property is associated with the lives of persons significant in our past.
- C Property embodies the distinctive characteristics of a type, period, or method of construction or represents the work of a master, or possesses high artistic values, or represents a significant and distinguishable entity whose components lack individual distinction.
- D Property has yielded, or is likely to yield, information important in prehistory or history.

Criteria Considerations

(Mark "x" in all the boxes that apply.)

Property is:

- A owned by a religious institution or used for religious purposes.
- B removed from its original location.
- C a birthplace or grave.
- D a cemetery.
- E a reconstructed building, object, or structure.
- F a commemorative property.
- G less than 50 years of age or achieved significance within the past 50 years.

Areas of Significance

(Enter categories from instructions)

architecture

education

Period of Significance

1924 - 1950

Significant Dates

1924

1932

Significant Person

(Complete if Criterion B is marked above)

n/a

Cultural Affiliation

Architect/Builder

Stanton, William A.-architect

E. G. Parish Construction Company

Narrative Statement of Significance

(Explain the significance of the property on one or more continuation sheets.)

9. Major Bibliographical References

Bibliography

(Cite the books, articles, and other sources used in preparing this form on one or more continuation sheets.)

Previous documentation on file (NPS):

- preliminary determination of individual listing (36 CFR 67) has been requested
- previously listed in the National Register
- previously determined eligible by the National Register
- designated a National Historic Landmark
- recorded by Historic American Buildings Survey # \_\_\_\_\_
- recorded by Historic American Engineering Record # \_\_\_\_\_

Primary location of additional data:

- State Historic Preservation Office
- Other State agency
- Federal agency
- Local government
- University
- Other

Name of repository:

Carr Junior High School  
Name of Property

Warren Mississippi  
County and State

**10. Geographical Data**

Acreage of Property approx. 6 acres

**UTM References**  
(Place additional UTM references on a continuation sheet.)

1 | 1 | 5 | 6 | 996 | 6 | 0 | 3 | 5 | 80 | 4 | 50 |  
Zone Easting Northing  
2 | | | | | | | | | | | | |

3 | | | | | | | | | | | | |  
Zone Easting Northing  
4 | | | | | | | | | | | | |

See continuation sheet

**Verbal Boundary Description**  
(Describe the boundaries of the property on a continuation sheet.)

**Boundary Justification**  
(Explain why the boundaries were selected on a continuation sheet.)

**11. Form Prepared By**

name/title Nancy H. Bell, Executive Director  
organization Vicksburg Foundation for Historic Preservation date 12/4/99  
street & number P. O. Box 254 telephone 601-636-5010  
city or town Vicksburg state MS zip code 39181

**Additional Documentation**

Submit the following items with the completed form:

**Continuation Sheets**

**Maps**

- A USGS map (7.5 or 15 minute series) indicating the property's location.
- A Sketch map for historic districts and properties having large acreage or numerous resources.

**Photographs**

Representative **black and white photographs** of the property.

**Additional items**

(Check with the SHPO or FPO for any additional items)

**Property Owner**

(Complete this item at the request of SHPO or FPO.)

name Vicksburg Senior Associates LP  
street & number 4945 South Drive telephone \_\_\_\_\_  
city or town Jackson state MS zip code 39209

**Paperwork Reduction Act Statement:** This information is being collected for applications to the National Register of Historic Places to nominate properties for listing or determine eligibility for listing, to list properties, and to amend existing listings. Response to this request is required to obtain a benefit in accordance with the National Historic Preservation Act, as amended (16 U.S.C. 470 et seq.).

**Estimated Burden Statement:** Public reporting burden for this form is estimated to average 18.1 hours per response including time for reviewing instructions, gathering and maintaining data, and completing and reviewing the form. Direct comments regarding this burden estimate or any aspect of this form to the Chief, Administrative Services Division, National Park Service, P.O. Box 37127, Washington, DC 20013-7127; and the Office of Management and Budget, Paperwork Reductions Projects (1024-0018), Washington, DC 20503.

United States Department of the Interior  
National Park Service

## National Register of Historic Places Continuation Sheet

Section number 7 Page 1

Carr Junior High  
Vicksburg, Warren, MS

---

### Description

Located on the east side of Cherry Street in downtown Vicksburg, Carr Junior High School is a symmetrical three-story red brick institutional building designed in the Tudor Gothic style. The roof is flat and hidden behind a stepped parapet wall capped with a limestone coping.

The main facade of the building features a central projecting rectangular bay that houses the main entrance at the second floor level and a three-part metal window with pivot sash on the third story. A stepped parapet rises above the parapet of the main part of the roof and bears the inscription "Carr Junior High School" in limestone. The main entrance, originally recessed behind a segmental-arched opening, is accessed by a three-platform staircase. In front of the first platform is a marble plaque which lists the names of the mayor and aldermen, city clerk, school board trustees, superintendent, architect, and builder. On either side of this central bay is a three-part multi-pane metal window with pivot sash on each of the three floors. A rectangular bay projects forward at each end of the building and features a four-part metal window containing four six-over-three-over-six pivot sash windows on each floor. A plain stone belt course separates the first and second floors and another divides the third floor from the parapet. The four bays on the second story are enhanced with limestone label lintels.

The south elevation is broken by eight bays on the first floor: a pair of six-over-three windows with pivot sash, two single-leaf entries filled with non-historic doors, a six-over-three-over-six window with pivot sash, and four three-part windows like those found on the facade. The belt course continues from the facade to this elevation and the windows are enhanced with label lintels. The north elevation features ten bays: double doors with a label lintel in the front section of the building, a pair of six-over-three windows with pivot sash and six paired six-over-three-over-six windows with pivot sash in the middle section, and two bays filled with non-historic sash in the rear section. The belt course continues to divide the building on this elevation as well. A two-bay classroom (24' x 54') at the rear of the center section of the building rises above the third floor and is the only room at the four story level. There are no bays on the first floor of the rear elevation. However, three paired six-over-three-over-six windows with pivot sash are found on each of the other two floors.

As originally built, the basement, located on the north side toward the rear, housed the boilers, coal storage and hot water supply. On all three floors, a wide corridor runs the width of the building (N-S) with concrete stairs at each end which run to the third floor. This corridor also runs the depth of the building (E-W) from the south end of the corridor. The first floor housed the cafeteria (59' x 67') in the center with rooms off of it containing the kitchen, dish-washing and storage facilities. In addition, the first floor was occupied by large classrooms, bathrooms with showers and dressing rooms, boys and girls play rooms, and the kindergarten department with its own bathrooms, office and storage area.

United States Department of the Interior  
National Park Service

## National Register of Historic Places Continuation Sheet

Section number 7 Page 2

Carr Junior High School  
Vicksburg, Warren County, MS

---

### Description (cont.)

The main entrance on the second floor opens onto a vestibule through which is the main hall (the configuration of which mirrors that below) and the entrance into the main floor of the auditorium (67' x 80'). The floor of the auditorium slopes slightly to the stage (27' x 67' with a proscenium opening of 45'). Originally a balcony at the back one-fourth of the auditorium provided additional seating and was accessed by two sets of doors on the third floor. This balcony was removed in the 1960s for safety reasons. The fixed seating on the floor and balcony provided for an audience of thirteen hundred. Windows on each side of the auditorium provide light and ventilation. The remainder of this floor contains administrative offices and classrooms. In addition, the school superintendent's offices were housed on this floor for many years. The third floor housed classrooms and the library.

The floors throughout the building are concrete overlaid with a variety of non-historic materials. The original interior doors have, for the most part, been replaced over the life of the building. With the exception of a vault that originally housed student's records, there is no original built-in furniture remaining.

Also of note on the Carr Junior property are two tennis courts and a football field behind the building and eighty-year old live oak trees in front of the building.

The building, while vacant for over twenty years, is structurally sound and retains its architectural integrity.

United States Department of the Interior  
National Park ServiceNational Register of Historic Places  
Continuation SheetSection number 8 Page 3Carr Junior High School  
Vicksburg, Warren County, MS**Statement of Significance****Criterion A- Education**

Carr Junior High School is eligible for listing in the National Register under Criterion A- Education, being locally significant in the field of education. Constructed in 1924, Carr Junior was the city's only white junior high school until 1932 when it became the city's only white high school. When Cooper High School was built in 1959 Carr once again was used as a junior high. The school was closed in 1979 when white and colored schools were combined as a result of integration.

**Criterion C- Architecture**

Carr Junior High School is eligible for listing in the National Register under Criterion C- Architecture, having local significance as being one of the largest and most prominent surviving buildings designed by William A. Stanton, Vicksburg's premier architect. Stanton practiced in Vicksburg from the 1870s to the 1920s and designed many of Vicksburg's religious, public, commercial and residential buildings including: Holy Trinity Church (NR), St. Francis Xavier Auditorium (NRD, ML), Yokena Presbyterian Church (NR), South Vicksburg Public School (NR), Warren County Jail (ML), Adolph Rose Building (NR), Susman Residence, Warner Residence (not extant), and Temple Anshe Chesed (not extant). Additionally, this building is eligible for listing as a locally important example of Tudor Gothic institutional architecture. The school retains a high degree of integrity in regard to design, materials, and workmanship, as well as, conveying a sense of time and place.

**Historical Summary**

Vicksburg's public school system was formed in 1835, ten years after the incorporation of the City of Vicksburg.<sup>1</sup> In these early years classes were held for both boys and girls in the old Vicksburg Hotel on Main Street. In 1870 the Vicksburg Municipal Separate School District was created as one of the first such districts established under the 1870 Legislative Enactment implementing a program of public education in accordance with the Constitutional Provisions of 1868.<sup>2</sup> In 1885 the district hired William Stanton to design and supervise the construction of the Main Street School (on the site of the Vicksburg Hotel) and the Walnut Street School, both for white children, and the Cherry Street School for colored students.<sup>3</sup> By 1895 the Main Street School was referred to as the "Girl's High"

<sup>1</sup>William F. Bruce, "A History of the Vicksburg Public Schools: 1825-1975." nonpublished manuscript.

<sup>2</sup>Dr. Merrill M. Hawkins, "Vicksburg's Schools Date Back to Ante-bellum Days." *The Vicksburg Evening Post*, July 1, 1963.

<sup>3</sup>Nancy H. Bell, "South Vicksburg Public School No. 200." National Register of Historic Places Nomination Form, 1985.

United States Department of the Interior  
National Park Service

## National Register of Historic Places Continuation Sheet

Section number 8 Page 4

Carr Junior High School  
Vicksburg, Warren County, MS

---

### Statement of Significance (cont.)

while the grammar and high school boys attended the Walnut Street School.<sup>4</sup> An additional building, South Vicksburg (also known as Speed Street School (NR) and designed by Stanton) had also been added by this time for boys and girls in the south end of the city.<sup>5</sup>

In 1914 a new high school was built on the corner of Howard and Clay Streets and the Main Street School became an elementary school. Carr Junior was the next school to be built by the district and it housed elementary classes and the administrative offices of the school district, in addition to junior high classes. According to an article in the Vicksburg Evening Post on September 11, 1924, William A. Stanton offered his services to the school board when a proposed school building program was announced. Having worked with Stanton on its previous projects, the board retained his services to build Carr Junior. William Stanton moved to Vicksburg from Natchez in the 1870s. He designed many public, commercial and religious buildings in Vicksburg over the next fifty years, as well as many of the most prominent residential buildings in the city. Among his designs were the Hotel Piazza (not extant), the first B'nai B'rith Literary Stock Club (not extant), the Willis Home (not extant), the American National Bank Building (not extant), the Citizens National Bank Building, and Bud Bazsinsky's Stable (NRD). Stanton was also the supervising architect for the erection of many of the monuments in the Vicksburg National Military Park including the Iowa Monument and the Illinois Monument. Carr School was designed by Stanton after careful study of school buildings across the United States and was built for \$220,000 by E. G. Parish Construction Company of Jackson, Tennessee.<sup>6</sup> The school was named in honor of John P. Carr, who, by 1924, had been the superintendent of the Vicksburg Public Schools for eighteen years. Carr moved from Indiana to Vicksburg in 1887 and in 1892 began his career with the public schools as a principal, teacher and superintendent.

In 1932, Main Street School was closed and the elementary classes were moved to the Clay Street School and high school classes were moved to Carr, then the city's only white high school. When H. V. Cooper High School was built in 1959, Carr became a junior high school once again only to close twenty years later when white and colored schools were combined as a result of integration. The building has been vacant since it was closed. In 1999 the building was purchased by Vicksburg Senior Associates and it will be rehabilitated for use as senior housing.

---

<sup>4</sup>Hawkins.

<sup>5</sup>Bell.

<sup>6</sup>"Architect Gives Description of New High School." *Vicksburg Evening Post*, September 11, 1924.



United States Department of the Interior  
National Park Service

## National Register of Historic Places Continuation Sheet

Section number 9, 10 Page 5

Carr Junior High School  
Vicksburg, Warren County, MS

---

### Bibliographical References

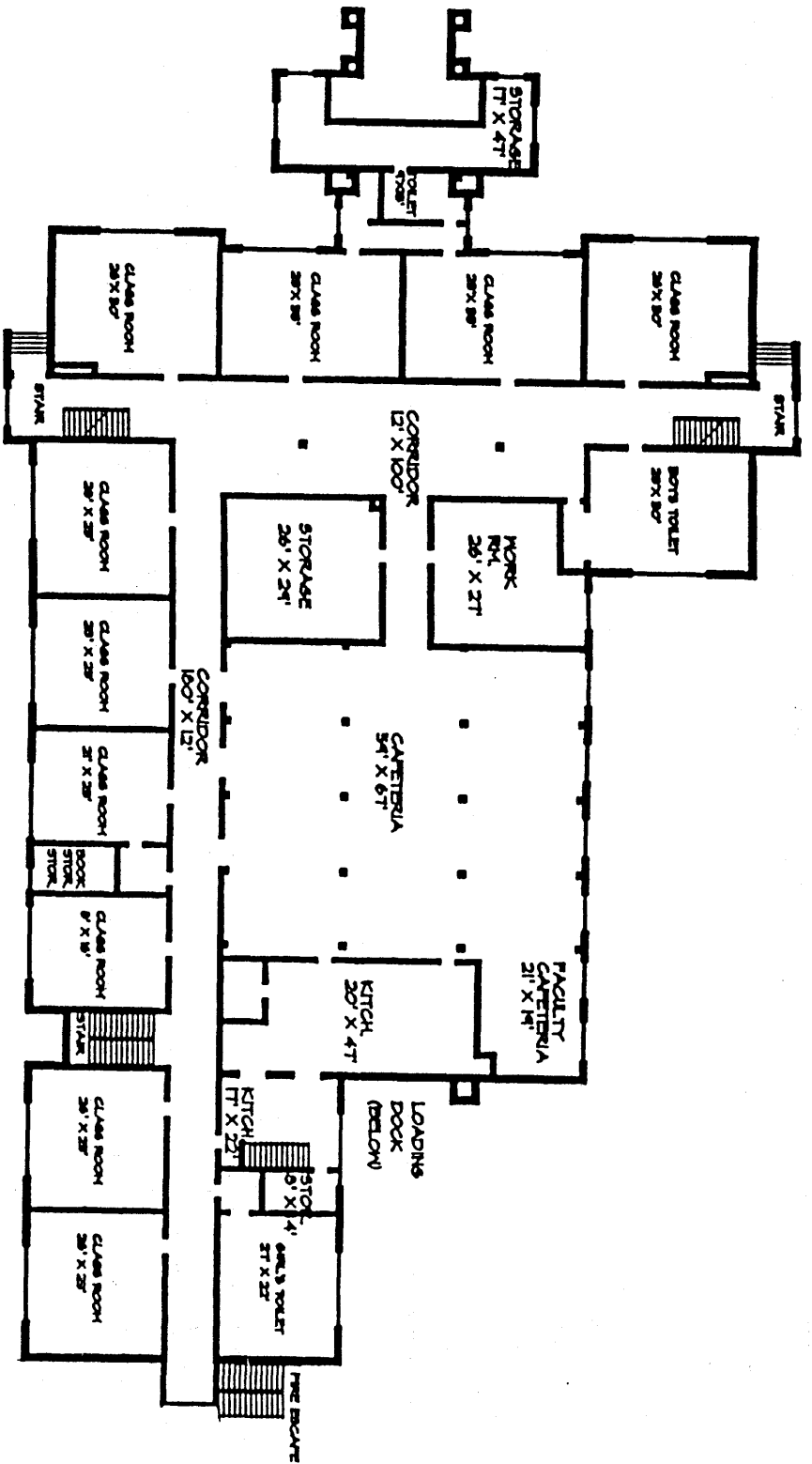
- "Architect Gives Description of New High School," *Vicksburg Evening Post*, September 11, 1924.
- Bell, Nancy H. "South Vicksburg Public School No 200," National Register of Historic Places Nomination Form, 1985.
- Bruce, William F. "A History of the Vicksburg Public Schools: 1825-1975." n.p., Vicksburg, Mississippi: Vicksburg Warren School District, 1975.
- Chapman, H. P. and J. F. Battaile. *Picturesque Vicksburg*. Vicksburg, Mississippi: Vicksburg Printing and Publishing Co., 1895.
- Hawkins, Merrill M. "Vicksburg's Schools Date Back to Ante-Bellum Days," *Vicksburg Evening Post*, July 1, 1963.
- O'Neill, J. Cyril. *Early Twentieth Century Vicksburg 1900-1910*. Vicksburg, Mississippi: J. Cyril O'Neill, 1976.
- Vicksburg City Schools Administration Office. *Board of Education Minute Book 1880-1899*.

### Verbal Boundary Description


That parcel of land, comprising approximately 6 acres, referred to as parcel 94V-34-2960-12-69 in the tax maps of the County of Warren, Mississippi.

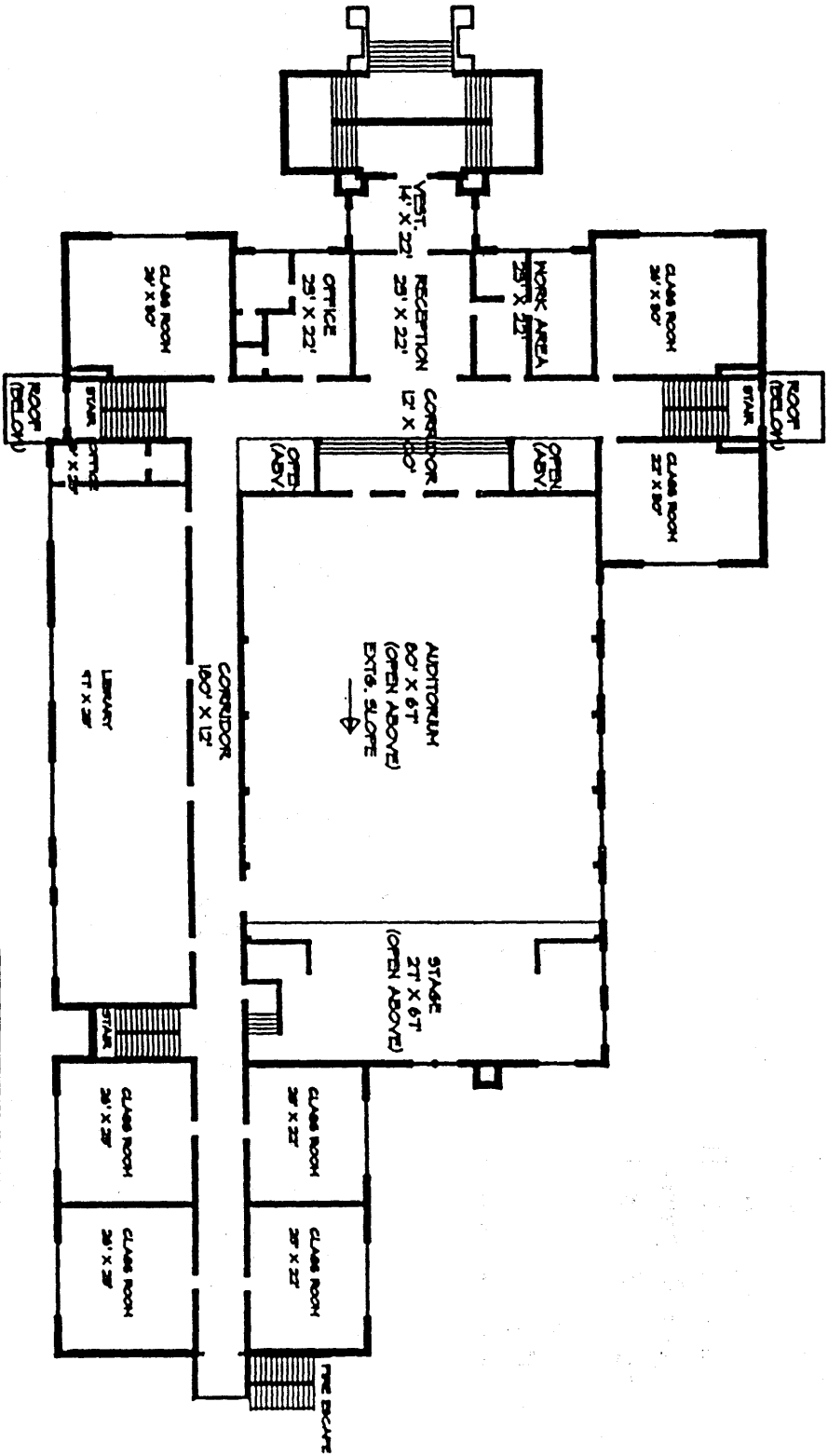
### Boundary Justification

The boundary lines were drawn to include that area that is the Carr Junior High School property as delineated on the Warren County Tax Map.



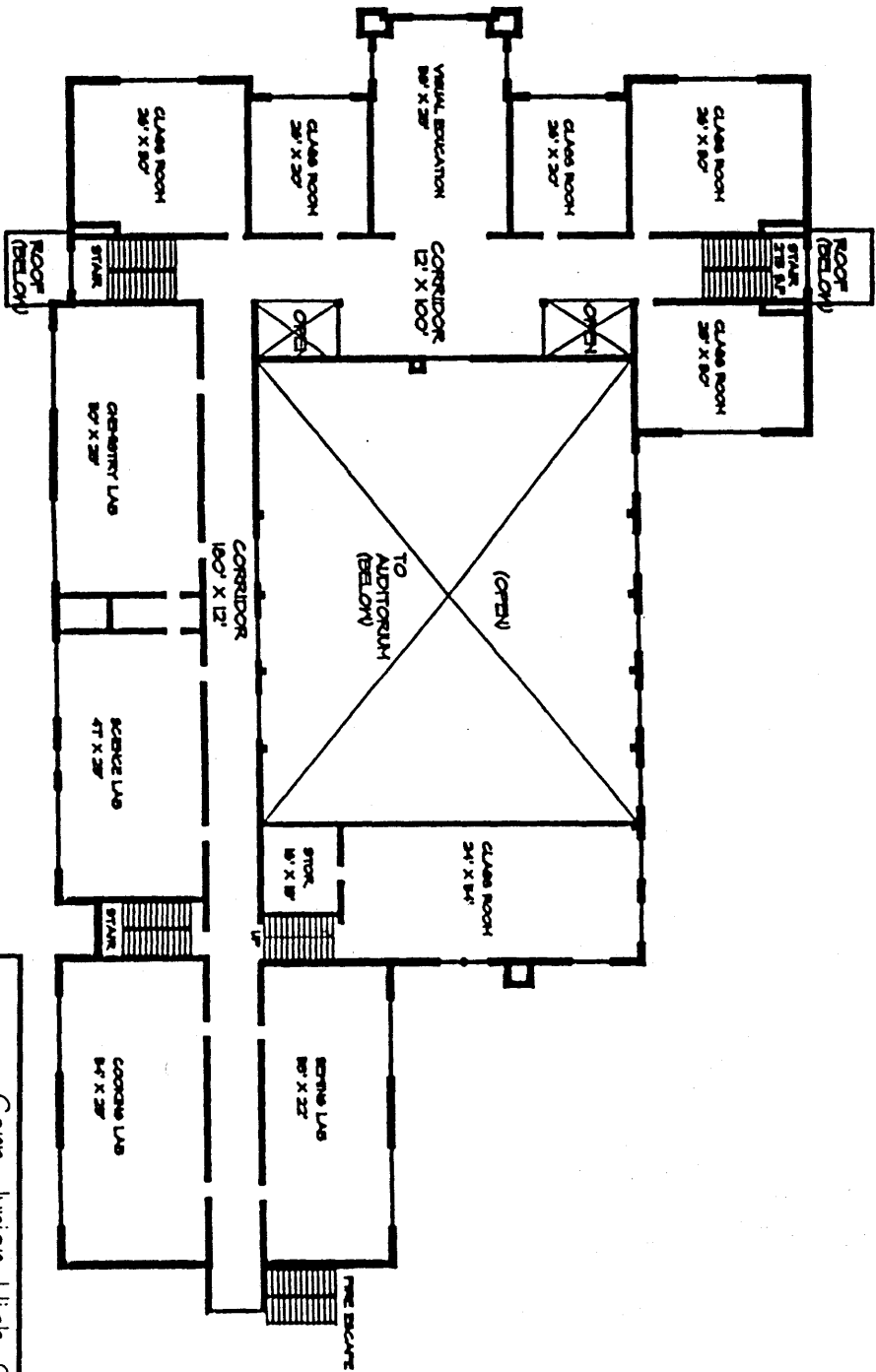
Carr Junior High School  
 Vicksburg, Warren County, Mississippi  
 First Floor Plan  
 January 2000  
 1 inch = 32 feet

 North



Carr Junior High School  
 Vicksburg, Warren County, Mississippi  
 Second Floor Plan  
 January 2000  
 1 inch = 32 feet

↑ North



Carr Junior High School  
 Vicksburg, Warren County, Mississippi  
 Third Floor Plan  
 January 2000  
 1 inch = 32 feet



North