



806

United States Department of the Interior
National Park Service

National Register of Historic Places Registration Form

This form is for use in nominating or requesting determinations for individual properties and districts. See instructions in National Register Bulletin, *How to Complete the National Register of Historic Places Registration Form*. If any item does not apply to the property being documented, enter "N/A" for "not applicable." For functions, architectural classification, materials, and areas of significance, enter only categories and subcategories from the instructions. Place additional certification comments, entries, and narrative items on continuation sheets if needed (NPS Form 10-900a).

1. Name of Property

historic name Enterprise Public Library
other names/site number _____

2. Location

street & number 101 NE 1st Street not for publication
city or town Enterprise vicinity
state Oregon code OR county Wallowa code 063 zip code 97828

3. State/Federal Agency Certification

As the designated authority under the National Historic Preservation Act, as amended,
I hereby certify that this X nomination ___ request for determination of eligibility meets the documentation standards for registering properties in the National Register of Historic Places and meets the procedural and professional requirements set forth in 36 CFR Part 60.

In my opinion, the property X meets ___ does not meet the National Register Criteria. I recommend that this property be considered significant at the following level(s) of significance:

___ national ___ statewide X local

Christine Cuman August 9, 2013
Signature of certifying official/Title: Deputy State Historic Preservation Officer Date

Oregon State Historic Preservation Officer
State or Federal agency/bureau or Tribal Government

In my opinion, the property ___ meets ___ does not meet the National Register criteria.

Signature of commenting official _____ Date _____

Title _____ State or Federal agency/bureau or Tribal Government _____

4. National Park Service Certification

I hereby certify that this property is:

- entered in the National Register determined eligible for the National Register
- determined not eligible for the National Register removed from the National Register

___ other (explain) _____

Jon Edson H. Beall 9-30-13
Signature of the Keeper Date of Action

Enterprise Public Library
Name of Property

Wallowa Co., OR
County and State

5. Classification

Ownership of Property
(Check as many boxes as apply.)

Category of Property
(Check only one box.)

Number of Resources within Property
(Do not include previously listed resources in the count.)

- private
- public - Local
- public - State
- public - Federal

- building(s)
- district
- site
- structure
- object

Contributing	Noncontributing	
1		buildings
		district
		site
		structure
		object
1	0	Total

Name of related multiple property listing
(Enter "N/A" if property is not part of a multiple property listing)

Number of contributing resources previously listed in the National Register

Historic Resources of Downtown Enterprise, 1888 - 1956

0

6. Function or Use

Historic Functions
(Enter categories from instructions.)

Current Functions
(Enter categories from instructions.)

EDUCATION: Library

EDUCATION: Library

7. Description

Architectural Classification
(Enter categories from instructions.)

Materials
(Enter categories from instructions.)

LATE 19TH/20TH CENTURY REVIVALS:
Classical Revival

foundation: CONCRETE
walls: CONCRETE
BRICK
roof: WOOD SHINGLES
other: STONE (accents)

Enterprise Public Library

Name of Property

Wallowa Co., OR

County and State

Narrative Description

(Describe the historic and current physical appearance of the property. Explain contributing and noncontributing resources if necessary. Begin with a **summary paragraph** that briefly describes the general characteristics of the property, such as its location, setting, size, and significant features.)

Completed in 1914, the Enterprise Public Library is located at 101 NE 1st Street in downtown Enterprise, a rural community in Wallowa County, Oregon (Figures 1-3). A restrained version of the twentieth-century Classical Revival style, the one-story, cross-plan brick building with a raised basement communicates its function through the "PUBLIC LIBRARY" nameplate above the central entrance door. The symmetrical front and rear façades are divided into three bays with the central bays projecting from the lateral bays (Photo 2). The concrete stem wall around the entire perimeter is punctuated at regular intervals by grouped window openings on the primary facades, and is visually separated from the brick walls of the main story by a corbelled water table. Laid in a common-bond pattern, the walls have decorative raised brick quoins and recessed panels below the windows. The fenestration is regular on the front and side façades, and features grouped one-over-one, double-hung windows with masonry lintels and sills. The projecting central bay has a pediment above the nameplate and main entrance door. Sidelights and a multi-light transom window frame the newer metal-frame entrance door that is accentuated by an ashlar coursing of Bowlby stone capped with a central granite keystone (Photo 3).¹ The door opens onto a concrete landing with opposing concrete steps leading down to the north and south of the landing, then west to the sidewalk. The steps have concrete sidewalls, and a metal railing and handrail. A book drop and pickup boxes are built under the landing between the stairways. Secondary entrances to the basement and main floor are on the east (rear) façade.

The interior of the 2,880 square-foot building retains a majority of its original layout, consisting of the main reading rooms, circulation area, and storage closet on the main floor, and offices, community and utility rooms, and a restroom in the basement (Figure 5). The entrance vestibule has a door on the north to the basement stairway and double doors on the east to the main floor. The circulation area, in the center of the main floor, is separated from the reading rooms by large openings. The reading rooms are in the lateral wings that are lit by large windows. Original finishes on the main floor include plaster walls, unpainted wood trim, flat arches, wood doors, and built-in bookshelves. The basement is organized around a central lobby with rooms on all sides and a hall leading to the rear exit door (Figure 5). Original features in the basement include the room configurations, trim, windows, and doors. Alterations to the building include reconfiguring the original exterior entrance staircase, installing doors at the original entrance opening, building a new ADA ramp on the back facade and rear exit stairway, installing new light fixtures, and upgrading the bathroom in the basement.

Narrative Description

Setting

On a prominent commercial lot in downtown Enterprise, the Enterprise Public Library faces west on the northeast corner of NE 1st and E Main streets with the long axis extending north-south along NE 1st Street. The IOOF Hall is north of the library across an alley, the Wallowa County Courthouse is diagonally to the southwest, and the Enterprise Mercantile and Milling Company Building (EM&M) and the current Enterprise City Hall/Fire Station are west across NE 1st Street (Figure 3, Photo 1). A one-story professional office building is directly behind the library to the east. The library covers most of the tax lot with small lawn areas in the west (front) and south sides. In 2012, a paved parking area was added to the north side of the building (Figure 4). A concrete sidewalk extends along the front façade with a planting strip between the sidewalk and on-street parking spaces.

¹ Bowlby stone was locally quarried on the land near Enterprise once owned by Enoch and Lulu Bowlby. The stone is classified as a consolidated volcanic ash found in Northeastern Oregon. The lightweight gray stone is almost the weight of wood, and when wet, can be easily cut with a saw. The stone was taken from the Bowlby's quarry, cut by local stonemasons, and left to dry and harden. When dry, the stone was a suitable building material. Many of the early buildings in downtown Enterprise are constructed of Bowlby stone.

Enterprise Public Library

Name of Property

Wallowa Co., OR

County and State

Exterior Description

Plan and Exterior Walls

The Enterprise Public Library is a one-story, cross-plan building measuring 41' x 60' with a raised basement (Figures 4). The symmetrically designed building has central projecting bays flanked by two lateral wings, and a concrete stem wall extending below grade to a reinforced concrete slab (Photo 2). Above-grade windows punctuate the stem wall, providing daylight to the basement. A slight stepped, concrete water table caps the stem wall, and provides a visual anchor to the red brick walls that extend to the frieze board.² Slightly recessed decorative brick panels are below the windows on the all facades except the back. The panels are defined by a rowlock coursing with square, rock-face Bowlby stone corner accents. Raised brick quoins decorate the building corners except on the rear façade.

The symmetrical front (west) façade is divided into three bays, with the central entrance bay projecting about five feet from the surface of the side bays (Photos 2 & 3). Concrete steps, on either side of the front door, lead to the entrance portico that culminates at a pediment with a recessed tympanum. Below the pediment is an inset concrete nameplate bordered by a geometric design that states "PUBLIC LIBRARY." The stone lintels above the windows nearly touch the wide wood frieze board that extends below the projecting eaves.

The north and south side facades are identical in design with a similar wall system and façade arrangement as the front façade (Photos 5 & 8). The brick walls cap the elevated board-form concrete foundation that has a band of windows that illuminate the basement. The wall treatment is the same as the front façade with brick walls that meet the wood frieze board, brick quoins, and three windows above a recessed brick panel.

The back (east) façade has the same concrete and brick construction although less decorative in design (Photo 4, 6, & 7). The central bay projects from the end bays approximately 12' with the brick chimney in the northeast corner. The rear façade is windowless with the exception of a large arched window and small boarded over window in the central bay (Photo 6). Exit doors in the rear central bay lead to the circulation area and to the basement.

Windows

The original, regular fenestration pattern is maintained throughout the building, although a basement window on the rear facade has been boarded over. The front and side façade windows are one-over-one, double-hung wood sash windows grouped in threes. Small vertical windows are on the north and south facades of the front central bay and single windows are below these in the raised foundation. All the windows are slightly recessed from the brick facade and are covered with exterior metal storm windows.

The grouped upper level windows on the front façade are centered in the lateral bays and have rock-faced Bowlby stone lintels and sills. Centered below the main story windows, the basement windows have stone lintels and concrete sills. Windows on the less visible side and rear facades have concrete lintels and sills. The rear façade is essentially windowless with the exception the large segmental arch window in the center bay of the main floor. This window is comprised of three, grouped, double-hung windows, slightly recessed from the brick surrounds and united by a continuous concrete sill. Below the arched window, a boarded-over opening (used originally as a coal chute) is in the raised concrete foundation.

² The water table does not extend around to the rear (east) facade.

Enterprise Public Library
Name of Property

Wallowa Co., OR
County and State

Entrances

The main entrance door opens onto a concrete landing with opposing concrete steps leading down to the north and south of the landing, then west to the sidewalk. The steps have concrete sidewalls, and a metal railing and handrail. A book drop and pickup boxes are built under the landing between the stairways. Sidelights and an original, multi-light transom window frame the newer metal-frame and glass entrance door. Originally, this opening had no door and led directly into the vestibule. The entrance is accentuated by an ashlar coursing of Bowlby stone capped with a central granite keystone in a contrasting lighter color. The words "PUBLIC LIBRARY" are inscribed in a prominent concrete panel above the entrance that is illuminated by newer, period style light fixtures (Photo 3).

Two secondary access doors are on the rear (east) façade. An ADA ramp (built in 2012) leads from the parking lot on the north to the metal door that opens to the basement hallway (Figures 4 and 7). This door is sheltered by a small gable roof structure. Concrete steps, at the south end of the ramp, lead up to a metal stairway to a secondary entrance door that opens to the circulation area on the main floor.

Roof

The central front gable and rear hip intersect the main north-south hip roof. The wood shingle roof was installed during the 2006 roof rehabilitation. During the early 1950/60s, the eaves and built-in gutters were removed from the main roof system due to deterioration. The eaves were reconstructed in 2006 with wood. The main fascia and the original front pediment fascia were covered with new metal fascias. The original tall brick chimney, built into the northeast corner of the rear central bay, extends above and intersects the eaves (Photos 4 & 6).

Interior Description

Summary

The Enterprise Public Library has a total square footage on the two levels of 2,980 square feet. The floor plan is organized around a central vestibule. Stairs in the vestibule lead up to the reading rooms and circulation area, and lead down to the basement level lobby, offices, community and utility rooms, and restroom (Figure 5). Most of the main rooms retain the original finishes, five-panel wood doors, plaster walls, window and door trim, wide wood baseboards, and built-in bookcases.

Entrance Vestibule

The entrance door opens into a vestibule that has a high ceiling, original fir floors (under the carpet), and stairs to the upper and lower levels. On the north side, the staircase to the basement is accessible through a single door with varnished fir surrounds and a central glass light. On the east side of the vestibule, a wide staircase leads up to double doors that open into the circulation area. The doors have central single lights surrounded by varnished fir frames (Photo 9). An original handrail, on the south side of the main stairway, and the varnished wood baseboards are intact. A framed photograph of Andrew Carnegie hangs near the door to the basement and next to library bulletin boards.

Main Floor

The main floor is divided into three areas: circulation and two reading rooms (Photo 10). A storage closet is along the west wall near the entrance doors, and a door in the southeast corner of the circulation area opens to a new exit stairway. Drop fluorescent lights have been added more recently to the high ceilings and carpet covers the original floors. Most of the walls are lath and plaster finished with varnished wood baseboards with

Enterprise Public Library

Name of Property

Wallowa Co., OR

County and State

the exception of some of the upper wall sections, which were damaged when the built-in wood gutters failed, and replaced with sheetrock in the 1950/1960s when repair work was completed on the roof (eaves removed).

Circulation Area

The circulation area includes the librarian's station and desk, a back door to the rear exit stairs, and a storage closet (Figure 5). This circulation area is a large, open rectangular space lit by the front doors on the west wall and a row of double-hung windows on the east wall. Three flat arches, framed by wide varnished fir trim, define openings into the two reading rooms and the east portion of the circulation area (Photo 11).

Built-in bookcases capped with a simple crown molding are against the east wall and a portion of the north wall. A varnished, five-panel door on the west wall opens into storage closet. A window above the built-in shelving in the closet illuminates the narrow room. Built during the historic period, the circulation desk is made of varnished Douglas fir panels secured with battens finished with a high baseboard and crown molding on the public side, and drawers with storage shelves below on the service side (Photo 11). The drawers retain the historic brass pulls. A newer surface has been added to the top of the desk.

Reading Rooms

The reading rooms, on either side of the circulation area, are identical in plan and details (Photo 10). Built-in bookcases, painted white, line the walls. The windows on the end walls (north and south) and along the front west façade have varnished Douglas fir trim and are located immediately above the bookshelves. Freestanding bookcases and tables are in the interior of each room.

Basement

A stairway on the north side of the entrance vestibule leads down to the basement that is arranged around a central lobby that has plaster walls and a concrete floor covered with carpeting (Figure 5). Doors and openings in the lobby lead to the community/lecture room, offices, restroom, storage closet, and utility room, and a hall leading to an exit door. Freestanding period library tables are in the hall. A majority of the metal door hardware is intact (Photo 14).

Lecture/Community Room

A five-panel varnished Douglas fir door, on the north wall of the basement, opens into the lecture/community room. Directly west and east of the door are windows allowing a visual connection to the lobby (Photo 12). The community room is a large open room that has bookcases along the north and east walls, painted wood baseboards, concrete exterior walls, and windows on the west and north walls. Carpeting covers the floor, and heating registers are long the bases of some of the bookcases. A solid-wood children's library table, dating from the historic period, has a plaque on the top that states "Presented by Nowetompatimmin Camp Fire Girls, 1940" (Photo 13).

Office

On the south side of the lobby, a painted, five-panel door leads to a room currently used as offices. Windows flank the door and originally provided a visual connection between the lobby and the office. The room has concrete walls, carpeted floors, drop fluorescence lights, and windows on the south and west walls above the bookshelves. The original moldings and baseboards are intact.

Utility, Exit Hall, Storage Closet, and Restroom

The door to the utility room is on the east wall of the hall. The five-panel door opens into a small room that has American Standard oil burning furnace, ductwork, and maintenance supplies. A boarded-up opening, originally a coal chute, is along the east wall. The exit hall, directly south of the utility room, has bookshelves along the wood paneled walls, carpeted floor, and fluorescent lights. A metal door is at the east end of this hall and opens to the new (2012) ADA ramp along the rear façade. A storage closet and a new ADA restroom are on the west wall. The storage closet is a narrow room with a window on the south wall and an opening on the

Enterprise Public Library
Name of Property

Wallowa Co., OR
County and State

north wall accessing another storage area (Figure 5). The exterior walls are concrete and the interior walls are lath and plaster. The new bathroom, north of the storage closet, has new finishes and fixtures, vinyl flooring, and no windows.

Alterations

Alterations outside Period of Significance

Exterior

In the 1950s/1960s, the eaves and built-in gutters on the main hip roof were cut-off flush with the face of the building due to deterioration and covered with T1-11 siding. In 1978, storm windows were added to the exterior of the windows. In 2004, the originally central concrete stairway was removed and replaced with a U-shaped concrete stairway, incorporating in an ADA book drop and mailboxes used for book pickup. New outside lights were installed near the front entrance during the stairway construction. The library was re-roofed in 2006 when the projecting eaves were reconstructed in wood and a metal fascia installed. The same year, the brick was repointed. In 2012, a paved parking lot was built on the north side of the building connecting to a new concrete ADA ramp along the east side of the library that leads to the basement door (Figure 4). At the same time, a new metal stairway was built on the north facade that accesses a secondary exit that opens to the main floor circulation area.

Interior

From the 1960s through the 1980s, most of the changes to the interior have been cosmetic or to the heating, plumbing, or electrical systems. These changes included rewiring, installation of a new furnace and light fixtures, plumbing improvements, recarpeting, painting, and installing new bookshelves in some of the rooms. In 2005, new carpeting and lighting were installed in the basement, and in 2006, the upstairs was recarpeted and new lights installed. A bathroom compliant with the Americans with Disabilities Act was built in the basement in 2010-11.

Enterprise Public Library
Name of Property

Wallowa Co., OR
County and State

8. Statement of Significance
Applicable National Register Criteria

(Mark "x" in one or more boxes for the criteria qualifying the property for National Register listing.)

- A Property is associated with events that have made a significant contribution to the broad patterns of our history.
- B Property is associated with the lives of persons significant in our past.
- C Property embodies the distinctive characteristics of a type, period, or method of construction or represents the work of a master, or possesses high artistic values, or represents a significant and distinguishable entity whose components lack individual distinction.
- D Property has yielded, or is likely to yield, information important in prehistory or history.

Criteria Considerations
(Mark "x" in all the boxes that apply.)

Property is:

- A Owned by a religious institution or used for religious purposes.
- B removed from its original location.
- C a birthplace or grave.
- D a cemetery.
- E a reconstructed building, object, or structure.
- F a commemorative property.
- G less than 50 years old or achieving significance within the past 50 years.

Period of Significance

The Period of Significance (POS) spans the period between 1914-1956. The beginning date of 1914 corresponds to the library's completion date, and the end date corresponds to the end of the POS defined in the Multiple Property Document (MPD), the *Historic Resources of Downtown Enterprise, Oregon, 1888-1956*. The significance of the building spans three historic contexts defined in the MPD; the *Railroad, Automobile, and the Timber Boom, 1908-1928*; *The Decline, Depression, and WWII, 1929-1945*; and the *Post World War II Boom, 1946-1956*.

Areas of Significance

(Enter categories from instructions.)

ARCHITECTURE

GOVERNMENT

EDUCATION

Period of Significance

1914-1956

Significant Dates

1914, Date of Construction

Significant Person

(Complete only if Criterion B is marked above.)

N/A

Cultural Affiliation

N/A

Architect/Builder

Milton S. Block, Architect

John Oberg, Contractor

Enterprise Public Library
Name of Property

Wallowa Co., OR
County and State

Criteria Considerations: N/A

Statement of Significance Summary Paragraph (Provide summary paragraph that includes level of significance & applicable criteria.)

The Enterprise Public Library meets the National Register of Historic Places (NRHP) registration requirements for Institutional Buildings under the sub-type Civic and Public Buildings established in the Multiple Property Document (MPD), *Historic Resources of Downtown Enterprise, 1888-1956*, under Criteria A and C. The areas of significance are Government, Education, and Architecture. Completed during the MPD historic context of *Railroad, Automobile, and Timber Boom, 1908-1928*, the library is locally significant under Criterion A in the area of Government for its association with the City of Enterprise, its role in the construction, and its continued financial and operational support. Also significant under the area of Education, the free public library represents the city's commitment to the education of its citizens. The building is also significant under Criterion C in the area of Architecture as a good example of a classically inspired library that retains a high degree of architectural integrity and represents the Carnegie Corporation philosophy of library design. The Period of Significance (POS) begins in 1914 with the completion of the library, and ends in 1956, the end date of the POS defined in the MPD.

Narrative Statement of Significance (Provide at least **one** paragraph for each area of significance)

Government: The Enterprise Public Library meets registration requirements for the NRHP outlined in the MPD for Institutional Buildings subtype Public/Civic Building under Criterion A in the area of Government. In 1913, the City of Enterprise received a grant from the Carnegie Corporation for the construction of a library only after the city made a long-term commitment to the project by providing a building site, promising a no-fee facility, and continuing to support the library services and maintenance with dedicated tax funds. The city viewed the support of the new library as a civic responsibility, much like the local government's investment in schools, and fire and police protection. The building reflects the philosophies of the City Beautiful Movement promoted by cities around the nation, emphasizing the creation of urban centers that evoked feelings of permanence and beauty, inspiring people to lead better civic and personal lives. In continuous use since its completion in 1914, the library remains a gathering place for the area's citizens in the small isolated community of Enterprise.

Education: The Enterprise Public Library also meets registration requirements for the NRHP under Criterion A in the area of Education outlined in the MPD. As an educational center, the Enterprise Public Library provided free access to hundreds of books, newspapers, and magazines. Staff continually added to the collection in an effort to expand the holdings and meet the public demand for new information. City residents and county ranchers and farmers depended on the library to learn about current events, latest technologies, agriculture, arts and music, and other topics. Various non-partisan groups used the basement lecture rooms for educational and cultural events, making the library a community center and gathering place. As a repository of the community's history and as an educational center, the Enterprise Public Library was a visual statement of the city's commitment to its citizens' betterment.

Architecture: The Enterprise Public Library also meets registration requirements for the NRHP under Criterion C in the area of Architecture outlined in the MPD. The library, designed by local La Grande architects Milton S. Block is an excellent example of Civic building sub-type that retains a high degree of architectural integrity. In its original location, the library retains its historic setting next to the IOOF Hall and EM&M building, and diagonally from the prominent Wallowa County Courthouse. Built with elements of the Classical Revival style, the library retains integrity of design, workmanship, and materials in its symmetrical design, red brick facades, regular fenestration, quoins, wood-sash windows with masonry lintels and sills, stone entrance surrounds, and "PUBLIC LIBRARY" prominently displayed in the central pediment. The interior also retains a high degree of integrity in the original room arrangements, fir trim, plaster walls, and built-in bookshelves. The library represents the design philosophies of the Carnegie Corporation outlined in "Notes on the Erection of Library Buildings" in its scale, simple architectural details, entrance vestibule, adult and children's reading rooms on either side of the circulation area, open bookshelves, and a daylight basement level with lecture, utility, and

Enterprise Public Library
Name of Property

Wallowa Co., OR
County and State

storage rooms. Of the thirty-one Carnegie libraries built in Oregon, the Enterprise Library is one of fourteen libraries currently used for its original function.

Integrity: The Enterprise Public Library meets the registration requirements of integrity outlined under Criteria A and C specified in the MPD in Section F-3: Institutional Building, sub-type Civic/Public Buildings. Still owned by the City of Enterprise and in continuous use as the public library on its original site, the building retains integrity of feeling, association, and location. The library also retains a high degree of architectural integrity in its design, setting, workmanship, and materials on the exterior and interior with the exception of the reconfiguration of the front stairs and covering the original fascia details on the central pediment when the eaves were rebuilt.³

Developmental history/additional historic context information (if appropriate)

Early Library Development

Located in the south-central portion of Wallowa County in Eastern Oregon, the small community of Enterprise was founded in the late 1880s after securing the Wallowa County seat position, a mill, and store. The surrounding agricultural land became a vital part of the local economy as more people moved into the region. Incorporated in February 1889, the new city council immediately began crafting ordinances to help govern the city, promoting Main Street as the commercial center, and establishing industrial areas. Small wooden false-front commercial buildings and a few masonry edifices were erected along Main Street, with residences and the first churches built immediately adjacent to the downtown. Entertainment halls were erected, and fraternal and social organizations were founded including literary groups.

In late 1899, public-minded Enterprise citizens began discussing the need for a library. By February 1900, the Circulating Library Association was organized, consisting of Mrs. E.W. Steel, Ida Funk, D.W. Sheahan, C.H. Zurcher, and John S. Hodgin.⁴ At that time, only Portland, Ashland, Astoria, Pendleton, Eugene, and The Dalles had organized libraries.⁵ The association circulated a list allowing citizens to subscribe to the library for an annual fee of 50 cents, or if unable to pay, a used book could be donated. The association held an ice cream social to raise money for new books and bookcases. The collection was first housed on the second story of the Bowlby Building in downtown.⁶ Two years later, the library moved to the upper story of the Berland Building, and then again in 1908, after the Enterprise Improvement League secured a rent-free room in the Opera House.

A 1909-10 "Report to the Oregon Library Commission" summarized of the success of the small Enterprise library by stating, "The town of Enterprise in Wallowa County has a small library which was purchased and is maintained by subscription and funds raised in various ways by citizens. After paying expenses such as small room rent and librarian's salary, the proceeds have been devoted to the purchase of new books. The people interested in the library are in hopes that they will be able to cultivate the library spirit in the community to the extent that the citizens will place sufficient importance upon the matter to vote a small part of the city tax for the maintenance of a free library."⁷ In early 1911, the city took over the operation of the library. At that time, the collection was on the third floor of the County Courthouse.

C.T. Hockett, physician and Enterprise City Council member, led a successful campaign to have the city take over the library. Realizing the need for a public library and more permanent building, the city authorized a ½-mill tax for support of a city library on January 13, 1911. The city appointed an Enterprise Library Board of Directors at that time, with Dr. Hockett as president and Bertha Millard as the first librarian.⁸ The board drafted

³ Architectural integrity according to the MPD registration requirements is further explored in Section F, page 15.

⁴ *Enterprise Record Chieftain*. "Recalls the Beginning of the Public Library," 27 November 1913. "Biennial Report of the Oregon Library Commission," 1909.

⁵ "Biennial Report of the Oregon Library Commission," Legislative Assembly Regular Session, 1915." Salem, OR

⁶ The Bowlby Building is located at 107 W. Main Street in downtown Enterprise, OR.

⁷ "Biennial Report of the Oregon Library Commission, Legislative Assembly Regular Session, 1911." Salem, OR.

⁸ Millard served as the Enterprise librarian from 1911 to 1959.

Enterprise Public Library

Name of Property

Wallowa Co., OR

County and State

by-laws, established hours of operation, ordered books and magazines, set up other regulatory policies, and made the library free to all by eliminating the yearly fees. The board ordered shades, bookcases, and office chairs from G.I. Ratcliff Co., a local "Furniture and House Furnishing Goods" store, and purchased a thousand book pockets for one dollar from J.K. Gill in Portland.⁹ In a letter dated February 22, 1911, former library association member John S. Hodgkin touted the success of the Enterprise Public Library by stating the library "has exerted an appreciable influence on the habits of members, which I think has contributed in no small way towards giving Enterprise a reputation for culture not possessed by some small towns."¹⁰

Community members held plays, teas, and dinners to purchase a building for the library. The fundraising efforts paid off in April 1911, when the City of Enterprise purchased a small building across from the Wallowa County Courthouse for use as the library building and city hall. At that time, there were about 250 books in the collection. Two years later, in February 1913, the Enterprise Library Board held a special meeting to discuss obtaining funding from the Andrew Carnegie Corporation to help erect a sole-purpose public library building.

Carnegie Corporation Library Program

Through the Carnegie Corporation, steel magnate Andrew Carnegie sponsored a program that financially supported construction of libraries as free public institutions. Between 1886 and 1917, Carnegie funded hundreds of library buildings all across the United States and other countries. His philanthropic giving was based on the belief that schools, hospitals, civic and cultural organizations, and libraries were assets to communities. He believed that free public libraries played an important role in social betterment of the people they served and had the power to change lives.

In large and small communities, libraries were considered the civic center and a repository of a community's history and culture. Libraries were a visual commitment to education, to the future of the community, and often, gave towns an appearance of stability. The Progressive and City Beautiful movements, popular during this period, went hand-in-hand with Carnegie's philosophy about the importance of libraries and the buildings that housed them.

In 1901, Carnegie hired a team of architects to advise the corporation on the design, materials, character, and scale of public libraries. For exteriors, the architects recommended economical designs without extra ornamentation, masonry construction, formal entry, and a central flight of stairs. Guidelines for the interiors included open shelving so books were accessible to all, circulation desks near the entrance doors and in view of the reading rooms, and community or lecture rooms. As more requests for library grants were made, Carnegie instructed James Bertram, his secretary and Carnegie Corporation Library Program administrator, to write instructions to further standardize Carnegie design specifications. In 1911, Bertram wrote "Notes on the Erection of Library Buildings."

According to the leaflet, a Carnegie library should be a rectangular building with a basement and a main floor. The main floor should be between 12'-15' high to accommodate the open bookshelves, with windows elevated at least 6'-7' from the floor to allow for continuous bookshelves along the walls. The circulation desk had to be located near the front entrance to allow for proper library supervision. The leaflet further stated that Carnegie libraries should not have fancy entrances with extensive use of materials but should be unassuming leading into small vestibules, not grand entrance halls with wasted space. Basements should have 9-10' ceilings, located about 4' below the natural grade, and used for lectures, storage, staff rooms, and utility. Library plans should be dignified and plain, and be practical to make library administration easy. Bertram sent the pamphlet to all communities requesting library grants from the Carnegie Corporation.

⁹ Bills submitted to the city for the purchase of goods for the library, dated July 21, August 15, and December 9, 2011. Enterprise Library Board minutes. Ratcliff Furniture is still in business today in downtown Enterprise.

¹⁰ Letter dated February 22, 1911 from John D. Hodgkin, an attorney, to Mrs. Holmes of the Oregon State Library. Enterprise Library Board minute collection, Enterprise Public Library.

Enterprise Public Library

Name of Property

Wallowa Co., OR

County and State

To be eligible for a grant from the Carnegie Corporation, a community had to demonstrate a need, provide a building site, promise the facility would be free to everyone, and promise to support library service and operations with tax funds equal to ten percent of the grant funds. These stipulations ensured that the libraries were a civic responsibility much like schools and fire/police protection. When all the stipulations above were met and Bertram approved the plans, the funds were sent to the grantee for disbursement, usually in installments according to completed work. After the project was completed, a photograph and reduced copy of the plans were submitted to the Carnegie Corporation. From 1909 to 1916, thirty-one (31) Oregon towns followed Carnegie Corporation's guidelines and received funding for the construction of new library. The City of Enterprise followed Carnegie's protocol in both funding and building their new library downtown.

The New Enterprise Carnegie Public Library

If the city committed to annually fund \$500 for operations and maintenance, the Carnegie Corporation would donate \$5,000 for the construction of a library building. Library board President Hockett presented the proposal to the board that made a motion to accept the offer. The proposal was forwarded to the City Council for approval. The library board also appointed Dr. Hockett to a committee that would recommend a suitable building site for the new library.

A heated discussion ensued at the June 23, 1913, City Council meeting when councilor Hockett presented the finding of his site selection for the new library. He recommended the purchase a lot northeast of the Wallowa County Courthouse Square owned by G.I. Ratcliff. Opposing councilors thought that the library should be built either on the courthouse square or west of the courthouse nearer the center of town (Figure 3). The issue was tabled until the next meeting, which was held on the seventh of July. At that meeting the discussion continued for and against the proposed site. Councilor Daniel Boyd argued, "all the public buildings in the city have been placed east of River Street and that more than half of the residents live west of that thoroughfare. . . The library should be located at the center of population, which would put it west of River Street" (Figure 6).¹¹ Once again Councilor Hockett argued in favor of the Ratcliff property stating that the library should be close to schools since a majority of patrons were pupils. With a three to one vote, the city purchased the Ratcliff lot for \$1,500.

In July 1913, the Library Board held another special meeting to approve the plans for the new library presented by La Grande architect Milton S. Block, and business partner, C.W. Bunting. A July 24, 1913 *Enterprise Record Chieftain* newspaper article states, "The building plans for the new Carnegie library at Enterprise were approved the first of the week by the state library board, and have been sent to the Carnegie foundation in New York. If this corporation also finds them satisfactory, the local board will proceed at once to have the building erected." The plans specified a brick building facing west that had lecture and utility rooms in the basement, and reading rooms and a central circulation area on the main floor.

The Carnegie Corporation approved the library plans in August 1913 with a caveat that the city prove that the construction cost would not exceed the \$5,000 grant amount. Library Board president Hockett phoned La Grande architect Block and Bunting and urged the architects to get the detailed specifications completed so bids could be solicited for the construction, and result wired back to the Carnegie Corporation. Plans were completed and five firms bid on the project. On August 23, 1913, the library board reviewed the bids and recommended awarding the project to local contractor John Oberg who bid \$4,125 satisfying the Carnegie Corporation's cost concerns. The August 28, 1913 *Enterprise Record Chieftain* announced "Library Contract Given to Oberg." The article states, "The ground around the building will be graded up to two feet, it was decided to give the structure a more commanding position. And thus the excavation will be very shallow. This will give easy entrance into the high basement."

Contractor Oberg discussed the use of stone or brick for the library's exterior. Brick was readily available and cost \$500 less than the local quarried Bowlby stone that required months of drying time before use. The library board and the city selected brick construction with stone accents. After more additional discussion ensued

¹¹ *Enterprise Record Chieftain*. 10 July 1913, "Library Ground Bought by City."

Enterprise Public Library

Name of Property

Wallowa Co., OR

County and State

about the siting of the building, the plans and contract were approved. Work on the building site started immediately with the hope the building would be completed by November 1, 1913.

Construction progressed rapidly in the fall and by September, the site work was completed, foundation poured, and walls almost in place. At this time, the library was once again at the forefront of the Enterprise City Council meeting when bids came in for heating, plumbing, and furnishings raising the construction cost over the \$5,000 grant. Committed to the project, the Enterprise City Council approved additional funding for completion of the building including construction of a sidewalk and parking area. By this time, the roof was almost finished, and contractor Oberg began choosing interior light fixtures and hardware.

The new Enterprise Public Library was completed for a cost of \$5,912 (Figures 7 & 8). The library board and City Council made joint motions to accept the new building at a special meeting on March 31, 1914. Contractor Oberg stated that he was pleased with the new library even though he lost money on the job, having bid several hundred dollars too low. The library board approved payments to architect Block, contractor Oberg, Oregon Sheet Metal (heating system, coal burning), Enterprise Electric Company, Ratcliff Furniture Company, EM&M Company (window shades), and plumber J.W. Graves.

The City Council quickly claimed one of the basement rooms for their twice-monthly meetings. Other non-partisan groups were welcome to use the community rooms. On March 12, 1914, the *Enterprise Record Chieftain* newspaper announced that the library's collection and furniture had been moved into the new building (Figure 8). The article states, "That the new library will be of great value to the community there can be no doubt. It will lead to the collection of many valuable books and will be a great educational facility in the town and surrounding country. It will be a meeting place for citizens. The building adorns the court house square, which it faces, contributing much to the substantial appearance of the town."

Proud of the new building, patrons flocked to the library that had two large, bright reading rooms with the circulation desk in the middle, and a basement that had community/lecture rooms for public use. The library board immediately began adding to the collection; one of the first purchases was the entire \$100 set of the International Encyclopedia. At the end of 1914, the library had a collection of 1,472 books with 18 magazine subscriptions.¹² As the collection grew, new lending and book collection policies were established. A library card system was initiated in 1916 as a way to better track lent books. As a result, a thousand borrower's cards and two thousand catalog cards were printed. In the month of October 1916, 1,264 people used the library and 50 new library cards were issued. A drinking fountain was added near the southwest corner of the library lot (Figures 7 & 9).

As the United States entered World War I, libraries all over Oregon joined the Library War Service under the direction of the Oregon State Library to help in the war effort. The Enterprise Library donated funds, books, and volunteers to relief effort. The library became a link to news of the war and how communities might help the government and troops. Organizations such as the Red Cross and other women's groups held meetings at the library to help address the needs of the service men and women. Enterprise volunteers prepared books for use by military personal by inserting pockets in the books and writing cards, and then sending them to collection sites for distribution. Enterprise donated \$125 to the War Libraries Fund Campaign of 1917, one of the larger donations for a town of its size.¹³ As the war ended, regular library service resumed, and by the end of 1918, the Enterprise library's collection increased by 605 books; the library board purchased 409 books and citizens donated another 196 books.¹⁴ At that time, the librarian's salary was \$40 a month.

Each year the library's collection grew as patronage increased. The basement room was also used extensively and in September 1924, the library board established new policies for the use of the rooms according to the

¹² "Biennial Report of the Oregon Library to the 29th Legislative Assembly, Regular Session, 1917." Salem, State Printing Department, Salem, OR.

¹³ "Biennial Report of the Oregon Library to the 30th Legislative Assembly, Regular Session, 1919." Salem, State Printing Department, Salem, OR.

¹⁴ *Enterprise Record Chieftain*. "Add 605 Books to Library in 1918, Total Now is 2,750." 9 January 1919.

Enterprise Public Library

Name of Property

Wallowa Co., OR

County and State

stipulations of the Carnegie Corporation. The agreement with the Carnegie Corporation stated the community rooms could only be used by non-religious, non-political organizations of a public educational nature. The board further stipulated that groups could not move the furniture, play music, or serve refreshment, and all arrangements for use of the room had to be scheduled through the library board.¹⁵ The board charged a small fee for the janitor's time, and for heating and electricity costs associated with the after hours' room use. By 1928, the Enterprise Public Library was ranked tenth in the state for its collection and activity. The community was proud of the fact that, "There are only nine that are better than ours, while it is maintained on far less than most libraries of its size."¹⁶

The September 28, 1933 edition of the *Enterprise Record Chieftain* reported that the library had a circulation of 19,777 books and magazines with 1,567 readers. The Great Depression had an impact on the Enterprise Library usage. Instead of buying books in the pre-Depression years, more people frequented the library to borrow books. The state library reported that the rapid change in the social and economic climate created an unparalleled demand for books on economics, the New Deal, money, and labor issues.¹⁷ As a gathering place and an institution of learning, the library played a key role in Enterprise during the Depression, as many businesses closed, people lost their homes, and extra income was used strictly for living expenses. The local Works Project Administration used the library's basement lecture room to hold regular meetings and training sessions. These government programs were often lifelines to many residents locally and nationally.

The City Council ceased using the downstairs' lecture room in May 1933, when new quarters were found. In September, the Library Board approved improvements to the building including applying a new Kalsomine (tinted white wash) to the walls, and repainting and repairing some of the exterior features. That same month, the library was the subject of a speech at a Lion's Club dinner presented by J.D. Walker (a later library board member) who stated that the Carnegie Public Library was perhaps the most valuable public institution in Enterprise.¹⁸ In 1937, better lights were installed, and in 1941, the bookshelves re-varnished. As the country prepared for World War II, so did the Oregon State Library and the public libraries around the state.

The Enterprise Public Library took part in the popular wartime Victory Book Campaign. Books were collected locally and then sent to the state library for distribution to men and women in military camps. The Enterprise library held regular children's story hour during the war as a way to help wives and children of service men. By the end of the 1940s, the library had an estimated 20,000 volumes with 1,466 cardholders.¹⁹ The library continued to add to the collection and start new programs for the citizens of Enterprise and the surrounding agricultural community. Bertha Millard maintained her position as librarian until the mid-1950s, directing the daily activity of the library since 1911.

In May 1964, the Wallowa County Library was established by a vote of the people. The county library office was housed in the lower level of the Enterprise Public Library with satellite stations sited in smaller outlying towns. Each station was open ten hours a week and received books from the headquarters in the Enterprise Public Library. The Wallowa County library maintained offices in the basement until relocated in the mid-1980s.

Although the library services have changed with new technologies, the Enterprise Public Library maintains its traditional informational services while also supporting technological-based services. Still owned by the City of Enterprise, the library continues its historic function as a gathering place and a place of learning, free to all area residents. In 2012, the collection numbered over 14,000 volumes available to over 3,000 patrons. Under the current Director, Denine Rautenstrauch, annual circulation transactions totaled more than 21,000.

¹⁵ Enterprise Public Library Minute Book. 8 September 1924.

¹⁶ "History of the Enterprise Public Library." March 1928, Enterprise Public Library archives.

¹⁷ *Biennial Report to the Oregon State Library to the 38th Legislative Assembly, 1935.*

¹⁸ *Enterprise Record Chieftain.* 28 September 1933.

¹⁹ *Enterprise Record Chieftain.* 10 February 1949.

Enterprise Public Library
Name of Property

Wallowa Co., OR
County and State

Oregon Carnegie Libraries

From 1901 to 1915, twenty-five (25) communities in Oregon received grant funds for the construction of thirty-one (31) public libraries.²⁰ The first Carnegie library grants were given to the communities of Eugene (1901), Portland (1901), and Grants Pass (1903). Over half of the Carnegie libraries in the state were funded from 1910 to 1915 with grants ranging from \$5,000 (Enterprise and Hermiston) to \$25,000 for the Pendleton and Baker City public libraries, and a \$27,500 grant for the Salem Public Library in Oregon's capital city. From 1907 to 1915, Carnegie granted funds for the construction of libraries in the smaller Eastern Oregon communities of Enterprise, Hermiston, Hood River, La Grande, Milton, Ontario, Pendleton, The Dalles, and Union. The Carnegie Library in Hermiston had the distinction of being the smallest city in Oregon to receive library funding from the Carnegie Corporation.

The earlier Carnegie libraries were given more design and plan latitude since the oversight by the Carnegie Corporation was minimal in the early period. By 1907, municipal governments were required to submit plans for approval before funds were released, and after 1911, copies of "Notes on the Erection of Library Buildings" were sent to the applicant before the design process started. The "notes" were meant as additional guidelines for grantees, stressing efficiency and practicality through recommended plan layouts. During this period, Carnegie library grants averaged from \$7,000 to \$15,000, often dictating more modest, utilitarian library designs with less stylistic detailing.

Designs for Carnegie libraries across Oregon were inspired by various revival styles popular in the late nineteenth and early twentieth centuries, especially those designed in the Classical Revival style. The 1893 Columbian Exposition introduced the Classical Revival style to the populous, and it quickly became a favorite for public buildings. The style became a symbol of democracy, education, freedom, and opportunity; particularly important themes in library development and design.²¹ Many of the ideals introduced in the Columbian Exposition about architect and planning were further developed in the City Beautiful Movement that swept the nation after the turn of the twentieth century. The movement founders believed that utilizing political and economic structure helped create beautiful, spacious, and orderly cities. Open spaces and parks were integrated into the urban fabric often giving public buildings more grandeur. These classically-inspired buildings gave an air of permanency to smaller towns that were promoting their cities as beautiful, cultured, and stable places to live in hopes of attracting growth. Built in the height of this progressive era in city planning, the Enterprise Public Library represents the ideals of the City Beautiful Movement, the influence of the Carnegie Corporation, and stylistic trends that favored classical architecture for public buildings

Enterprise Public Library Design Elements

Architect Milton S. Block, along with business partner Clarence W. Bunting, received the contract for the design of the Enterprise Public Library. After getting approval from the Oregon State Library Board, the plans for the library were forwarded to the Carnegie Corporation for final review. Architect Block, a native of Illinois born in 1882, moved to Baker City, Oregon prior to 1900, and later moved to Portland where he worked as an architect for several years. By 1913, Block had moved back to the Eastern Oregon town of La Grande after receiving design contracts for both Carnegie libraries in Enterprise and La Grande. His business partner, C.W. Bunting, was a salesman by trade and might have been Block's office manager and contract assistant. The Enterprise plan was approved in July 1913; the same month funds were released for the construction of the La Grande Public Library.²²

²⁰ Carnegie granted Pacific University in Forest Grove, Oregon funds to build a library on campus. Although, the Pacific University Library was not built by a city or county government, this library is often added to the list of Carnegie libraries in Oregon.

²¹ Theodore Jones. *Carnegie Libraries Across America*. (John Wiley & Sons, Inc., 1997), p. 67.

²² The La Grande Public Library was a classically detailed building. The library was larger and more decorative than Block's design for the Enterprise library. La Grande received a \$12,500 library grant from the Carnegie Corporation.

Enterprise Public Library

Name of Property

Wallowa Co., OR

County and State

Block designed the Enterprise library following the guidelines in the Carnegie Corporation's 'Note for the Erection of Library Building' authored by program director James Bertram. These guidelines were written to help smaller communities design efficient, affordable, serviceable, and buildable libraries. Bertram recommended six floor plans that would meet the programmatic needs of a library, yet give the community and architect latitude on style choices, and exterior and interior details (Figure 10). Each of Bertram's six floor plans (labeled A through F) differed in room arrangement and size but all had similar room functions that included vestibules, reading rooms, circulation areas, lecture and staff rooms, and utility and toilet rooms.

It appears that architect Block designed the Enterprise library with elements of Bertram's Plan A (Figure 10). Plan A shows a rectangular plan with a central exterior staircase leading up to a vestibule with stairs to the main floor circulation area, and to the basement rooms. The main floor of the Enterprise library follows Plan A layout with children and adult reading rooms on either side of the circulation area. The basement plan varied somewhat from Bertram's plan but included similar rooms; a lecture room, toilet, hall, utility room, and a corridor to a basement exit door.

Block also referred to the written guidelines of the Carnegie foundation by incorporating a raised daylight basement into the one-story building design, groups of windows elevated enough to incorporate high bookshelves against the interior reading rooms, a central stairway leading to an entrance vestibule that had stairs to the main floor and basement, masonry construction, hip roof, and a modified rectangular form.

Bertram left the stylistic details of the exterior design to the community and architect, believing that these features should express the individuality of the town as long as the design was kept plain and dignified. Architect Block chose design elements of the popular Classical Revival style. Although a simplified, restrained version of the style, the library design had distinctive elements in its symmetrical form, cross-shape plan with projecting front and back central bays, hip roof, front pediment, quoins, brick construction, masonry window sills and lintels, accentuated entrance, and lawn surrounding the building.

John Oberg, the contractor for the new library, was proficient at masonry construction, often combining brick, stone, and concrete into one design. Oberg worked closely with architect Block and the city, weighing in on the choice of construction material.²³ Brick was chosen over stone because of the extensive drying time required for the Bowlby stone to cure after cutting.²⁴ The red brick was readily available, and locally made. Stone accents, however, were used around the entrance, and for the front window sills and lintels. The stone accents complimented the nearby Wallowa County Courthouse, the most prominent stone building in downtown. Oberg used his skills as a mason successfully in the library construction.

Registration Requirements

The Enterprise Public Library meets eligibility for the NRHP outlined in the registration requirements in the *Historic Resources of Downtown Enterprise, 1888-1956* MPD. The library has local significance under Criterion A in the areas of Government and Education, and under Criterion C for Architecture. Below is a discussion of the general and specific registration requirements set forth in the MPD, Section F-3; Institutional Buildings; subtype Civic/Public Buildings.

²³ John Oberg was a Swedish emigrant of 1907, and began working in Enterprise in the early 1910s as a contractor specializing in masonry construction. He was one of the earliest contractors to erect entire buildings of concrete.

²⁴ Some of the early buildings in Enterprise's downtown were constructed of Bowlby stone including the Bowlby Building, Wallowa County Courthouse (1909-10), the Enterprise Hotel (1903), the Fraternal Hall (1908), the Litch Building (1909), the Enterprise Mercantile and Milling Company Building (1916), and the Chieftain Building.

Enterprise Public Library
Name of Property

Wallowa Co., OR
County and State

Description of Institutional Property Building Types

General Registration Requirements

To be eligible for listing under this property type a building must: a) be located within the geographic area defined in Section G; b) have been originally used for a civic or commercial use, or converted into such use during the historic period; and c) have been built between 1888 and 1956. The Enterprise Public Library meets all the general requirements of the MPD. The building is a) located in downtown Enterprise on NE 1st Street, b) in use as a library, its original civic function, and c) built in 1914, within the POS.

Specific Registration Requirements

To be eligible under Criterion A in the area of Government and Education, a library building must retain a strong association with Enterprise's early growth and development during the early 1900s when the principles of the City Beautiful Movement were shaping towns across the nation. Additionally, the library must maintain integrity of association, feeling, setting, and location because of their public use. Completed in 1914, during the historic context *Railroad, Automobile, and Timber Industry Boom: 1908-1928*, the Enterprise Public Library reflects the philosophies of the City Beautiful Movement emphasizing the creation of urban centers that evoked feelings of permanence and beauty through classical architecture, inspiring people to lead better civic and personal lives. The City of Enterprise viewed the support of the new library as a civic responsibility, much like the local government's investment in schools, and fire and police protection. The library is a testament to the city's commitment to the principles of the movement in creating a better city with a free public library for the education of its citizens. The Enterprise Public Library meets these requirements as an excellent example of a public library funded by the Carnegie Corporation that reflects one of the most prosperous periods in Enterprise's history.

To be eligible under Criterion C in the area of Architecture, a library building must retain a high level of architectural integrity of design, materials, workmanship, feeling, association, setting, and location. Designed with elements of the Classical Revival style, the library retains architectural integrity of the design, materials, and workmanship in its symmetrical façade organization, hip roof, regular window fenestration with large grouped windows, brick construction, projecting entrance with stone surrounds, central pediment, brick quoins, name plate, and interior room arrangements and finishes. The library retains integrity of location and setting on its original site surrounded by front and side lawn areas, and near other historic buildings dating from the same time period. Integrity of feeling and association has been maintained as the building is used for its original purpose as a library. The new addition of the ADA ramp and secondary exit stairs also meet the registration requirements that the additions should be subordinate to and in back of the historic building.

Evaluation of Significance

Criterion A

Under Education and Government as defined in the MPD, Section F-1 *Significance*, the Enterprise Public Library is significant for its strong association with Enterprise's early development and the City Beautiful Movement as noted in the historic contexts Section E of the MPD. Spanning three historic contexts, from 1914 to 1956, the library maintained its role as an important educational and community center. The library's completion in 1914 corresponds to a prosperous period in Enterprise's history when the new courthouse was erected, agricultural commodities received high returns, the first railroad through Enterprise was completed, and the automobile made its appearance in the community. Enterprise business and community leaders became actively involved in bettering the community for all the residents, and providing amenities found in larger towns. The citizens desired civic and public buildings that showed the city's prominence in the county. The Enterprise Public Library exemplifies the pride in establishing a public library in the town during the progressive era. The library became an educational center for the local residents' desire to better their lives through learning. No other new public or civic buildings were erected in the downtown after the Carnegie Library was completed in 1914. The library has been in continuous use since its construction and continues to serve the community today.

Enterprise Public Library

Name of Property

Wallowa Co., OR

County and State

Criterion C

Under Architecture as defined in the MPD, Section F-1 *Significance*, the Enterprise Public Library is locally significant as a good example of a Carnegie funded public library designed with elements of the Classical Revival style. The library retains salient features of the style in its symmetrical façade organization, hip roof, regular window fenestration, brick construction, prominent entrance with stone surrounds, recessed entrance, and brick quoins. The library's interior layout also reflects the influence of the Carnegie Corporation on the layout of small libraries. The Enterprise library is similar to one of the recommended floor plans published in the Carnegie Corporation's "Notes in the Erection of Library Buildings." The Enterprise Public Library is the only building of this sub-type constructed in the community.

Evaluation of Integrity

Criterion A

To be eligible in the area of Education and Government, the historic resources must retain a strong association with Enterprise's early growth and development, when the principles of the City Beautiful Movement were shaping the community during a time of tremendous development in the downtown Enterprise. Along with conveying the historic period, the Enterprise Public Library, at a minimum has to retain the original window and door openings, roof form, height, decorative details, and symmetrical form, and significant interior details, room arrangements, and lawn area to be considered under Criterion A. The Enterprise Public Library is significant for its long history and continued use as library and gathering place within the POS, and retains sufficient integrity to convey the historic period.

Criterion C

The historic resource eligible under this criterion has to retain a high degree of architectural integrity of design, materials, workmanship, feeling, association, setting, and location. Designed with elements of the Classical Revival style, the library's features and details identified above remain essentially unaltered on the interior and exterior. The addition of the ADA ramp and exit doors on the back of the library are not visible from the primary facades and are subordinate in scale to the original library, thus meeting the registration requirements outlined in the MPD. Additionally, although the front staircase has been reconfigured and the fascia on the pediment covered during the roof rehabilitation, the building retains sufficient architectural integrity to meet the registration requirements and convey the historic period and design.

Enterprise Public Library
Name of Property

Wallowa Co., OR
County and State

9. Major Bibliographical References

- Belew, Ellie. *About Wallowa County: People, Places, Images*. Enterprise: Pika Press, 2000.
- "Building on Our Pioneer Spirit." Wallowa County Economic Action Team Report. May, 2007.
- Coffman, Lloyd W. *5200 Thursdays in the Wallowas, A Centennial History of The Wallowa County Chieftain*. Enterprise: Wallowa County Chieftain, 1984.
- Enterprise City Plat Map, Wallowa County Assessor's Office, Wallowa County Courthouse.
- Enterprise Public Library. Enterprise Library Board minutes in the archive collection located at the Enterprise Public Library, 1911-present.
- Enterprise Record Chieftain*. Multiple editions, 6/26/1913, 7/10/1913, 7/24/1913, 8/14/1913, 8/28/1913, 9/11/1913, 11/27/1913, 3/12/1914, 7/23/1914, 1/19/1919, and 12/11/1919.
- History of Union and Wallowa Counties*. Western Historical Publishing Company, 1902.
- Horner, John Harland. "The Horner Papers" (Volume 2A p. 482), Enterprise Public Library Collection.
- Jones, Theodore. *Carnegie Libraries Across America: A Public Legacy*. New York: John Wiley & Sons, Inc., 1997.
- Krussow, Patricia and Donovan, Sally. Historic Register of Historic Places Registration Form, "Hood River County Library and Georgiana Smith Park." November 1997.
- "Notes to the Erection of Library Buildings." Carnegie Mellon University: Andrew Carnegie Online Archives. < <http://www.accesspadr.org/cdm4/document.php?CISOROOT=/acamu-acarc&CISOPTR=6474&REC=1>>
- Pudgett, Keith. "The History of Wallowa County, OR." Wallowa County Museum Board, Taylor Publishing Company. Dallas, Texas. 1983.
- Sanborn Fire Insurance Maps. Enterprise, Oregon, 1890, 1900, 1910, 1917, and 1941.
- State of Oregon. "Biennial Report of the Oregon Library Commission," 1909 and 1911. Legislative Assembly Regular Session, Salem, OR.
- State of Oregon. "Biennial Report of the Oregon State Library," 1915, 1917, 1922, and 1937. Legislative Assembly Regular Session, Salem, OR.
- Sterbentz, Cathy. "Historic Downtown Enterprise, A Walking Tour." Enterprise: Enterprise Hometown Improvement Group. Enterprise, 2006.
- Swinehart, Ralph. Interview with Enterprise resident, July 2009.
- Wallowa County Chieftain*. "Wallowa County, 1887-1987, 100 Years of Pioneer Spirit." February 1987.
- United States Census. 1880, 1900, 1910, 1920, and 1930. <<http://www.ancestry.com>>
- Wallowa County Courthouse. Wallowa County Assessor's and Clerk's Offices. Enterprise, OR.
- "Wallowa Co., The Land of Beauty & Opportunity." Enterprise Chamber of Commerce publication, c 1960.

Enterprise Public Library
Name of Property

Wallowa Co., OR
County and State

Previous documentation on file (NPS):

- preliminary determination of individual listing (36 CFR 67 has been requested)
- previously listed in the National Register
- previously determined eligible by the National Register
- designated a National Historic Landmark
- recorded by Historic American Buildings Survey # _____
- recorded by Historic American Engineering Record # _____
- recorded by Historic American Landscape Survey # _____

Primary location of additional data:

- State Historic Preservation Office
 - Other State agency
 - Federal agency
 - Local government
 - University
 - Other
- Name of repository: Oregon State Archives
Oregon State Library

Historic Resources Survey Number (if assigned): N/A

10. Geographical Data

Acreage of Property Less than one acre
(Do not include previously listed resource acreage.)

UTM References

(Place additional UTM references on a continuation sheet.)

1	<u>11</u>	<u>478537</u>	<u>5030233</u>	3	<u> </u>	<u> </u>	<u> </u>
	Zone	Easting	Northing		Zone	Easting	Northing
2	<u> </u>	<u> </u>	<u> </u>	4	<u> </u>	<u> </u>	<u> </u>
	Zone	Easting	Northing		Zone	Easting	Northing

Verbal Boundary Description (Describe the boundaries of the property.)

The nominated area includes Tax Lot 1200, further defined as part of Lot 3, Block 3 in the Original Plat of Enterprise, Township 2S, Range 44E, Section 2. The tax lot measures 60' wide (north-south) and 75' long (east-west), and includes the library, and lawn and parking areas, which encompass the entire tax lot.

Boundary Justification (Explain why the boundaries were selected.)

The nominated area covers the entire tax lot that has been in continuous ownership by the city since the property was purchased in 1913. The tax lot is the historic boundary of the property.

11. Form Prepared By

name/title Sally Donovan, M.S.

organization Donovan and Associates date February 7, 2013

street & number 1615 Taylor Avenue telephone (541) 386-6461

city or town Hood River state OR zip code 97031

e-mail sally@donovanandassociates.net

Enterprise Public Library
Name of Property

Wallowa Co., OR
County and State

Additional Documentation

Submit the following items with the completed form:

- **Maps:** A **USGS map** (7.5 or 15 minute series) indicating the property's location.

A **Sketch map** for historic districts and properties having large acreage or numerous resources. Key all photographs to this map.
- **Continuation Sheets**
- **Additional items:** (Check with the SHPO or FPO for any additional items.)

Enterprise Public Library
Name of Property

Wallowa Co., OR
County and State

Photographs:

Submit clear and descriptive photographs. The size of each image must be 1600x1200 pixels at 300 ppi (pixels per inch) or larger. Key all photographs to the sketch map.

Name of Property: Enterprise Public Library

City or Vicinity: Enterprise

County: Wallowa

State: Oregon

Photographer: Sally Donovan

Date Photographed: Fall 2012 and Spring 2013

Description of Photograph(s) and number:

Photo 1 of 14: OR_WallowaCounty_EnterprisePublicLibrary_DowntownEnterprise_1888-1856_MPD_0001
Looking north from NE 1st and E Main streets with the historic EM&M Building opposite the library and Enterprise IOOF Hall in background. West (front) and south facades visible.

Photo 2 of 14: OR_WallowaCounty_EnterprisePublicLibrary_DowntownEnterprise_1888-1856_MPD_0002
West façade (front), looking east.

Photo 3 of 14: OR_WallowaCounty_EnterprisePublicLibrary_DowntownEnterprise_1888-1856_MPD_0003
West façade, looking east at central entrance.

Photo 4 of 14: OR_WallowaCounty_EnterprisePublicLibrary_DowntownEnterprise_1888-1856_MPD_0004
North façade and part of east facade, looking southwest with parking lot in foreground and Wallowa County Courthouse in background.

Photo 5 of 14: OR_WallowaCounty_EnterprisePublicLibrary_DowntownEnterprise_1888-1856_MPD_0005
North façade, looking south. East façade, looking southwest at large arched rear window.

Photo 6 of 14: OR_WallowaCounty_EnterprisePublicLibrary_DowntownEnterprise_1888-1856_MPD_0006
East façade, looking southwest at large arched rear window.

Photo 7 of 14: OR_WallowaCounty_EnterprisePublicLibrary_DowntownEnterprise_1888-1856_MPD_0007
South and east (rear) facades showing 2012 ADA ramp and rear door to main library level, looking northerly.

Photo 8 of 14: OR_WallowaCounty_EnterprisePublicLibrary_DowntownEnterprise_1888-1856_MPD_0008
South façade, looking north.

Photo 9 of 14: OR_WallowaCounty_EnterprisePublicLibrary_DowntownEnterprise_1888-1856_MPD_0009
Entrance doors from interior of circulation area, looking northwest.

Photo 10 of 14: OR_WallowaCounty_EnterprisePublicLibrary_DowntownEnterprise_1888-1856_MPD_0010
Looking at south reading room from circulation area.

Enterprise Public Library
Name of Property

Wallowa Co., OR
County and State

Photos Continued

Photo 11 of 14: OR_WallowaCounty_EnterprisePublicLibrary_DowntownEnterprise_1888-1856_MPD_0011
Circulation desk looking east.

Photo 12 of 14: OR_WallowaCounty_EnterprisePublicLibrary_DowntownEnterprise_1888-1856_MPD_0012
Basement lobby looking north at door opening to former lecture/community room (under north wing).

Photo 13 of 14: OR_WallowaCounty_EnterprisePublicLibrary_DowntownEnterprise_1888-1856_MPD_0013
1940 children's library table and chairs in lecture/community room (north side of basement).

Photo 14 of 14: OR_WallowaCounty_EnterprisePublicLibrary_DowntownEnterprise_1888-1856_MPD_0014
Detail of original door knob in former lecture/community room.

Property Owner: (Complete this item at the request of the SHPO or FPO.)

name City of Enterprise
street & number 108 NE 1st, Street telephone (541) 426-4196
city or town Enterprise state OR zip code 97828

Paperwork Reduction Act Statement: This information is being collected for applications to the National Register of Historic Places to nominate properties for listing or determine eligibility for listing, to list properties, and to amend existing listings. Response to this request is required to obtain a benefit in accordance with the National Historic Preservation Act, as amended (16 U.S.C.460 et seq.).

Estimated Burden Statement: Public reporting burden for this form is estimated to average 18 hours per response including time for reviewing instructions, gathering and maintaining data, and completing and reviewing the form. Direct comments regarding this burden estimate or any aspect of this form to the Office of Planning and Performance Management. U.S. Dept. of the Interior, 1849 C. Street, NW, Washington, D

United States Department of the Interior
National Park Service

National Register of Historic Places Continuation Sheet

Section number Additional Documentation Page 24

Enterprise Public Library

Name of Property

Wallowa Co., Oregon

County and State

Historic Resources of Downtown

Enterprise, 1888-1956

Name of multiple listing (if applicable)

List of Figures

- Figure 1:** Enterprise, Oregon, USGS Topographic Map Enterprise Quadrangle
- Figure 2:** Tax Lot Map
- Figure 3:** Area Map
- Figure 4:** Site Plan
- Figure 5:** Basement and Main Floor Plans
- Figure 6:** 1917 Sanborn Fire Insurance Map updated to 1941 of downtown Enterprise
- Figure 7:** Historic photographs of the library exterior c. 1914 (Enterprise Library collection)
- Figure 8:** "Library is Moved to New Building" (*Enterprise Record Chieftain*, March 12, 1914)
- Figure 9:** Top Photograph: Interior of library with long-time librarian Bertha Millard and reading room in background, "The History of Wallowa County." Bottom Photograph: Current photograph of the original drinking fountain, now located on the lawn of the Wallowa County Courthouse. The fountain was originally near the southwest corner of the library tax lot (see fountain in historic photograph, Figure 7).
- Figure 10:** Suggested library floor plans from "Notes for the Erection of Library Buildings," Carnegie Corporation, 1911.

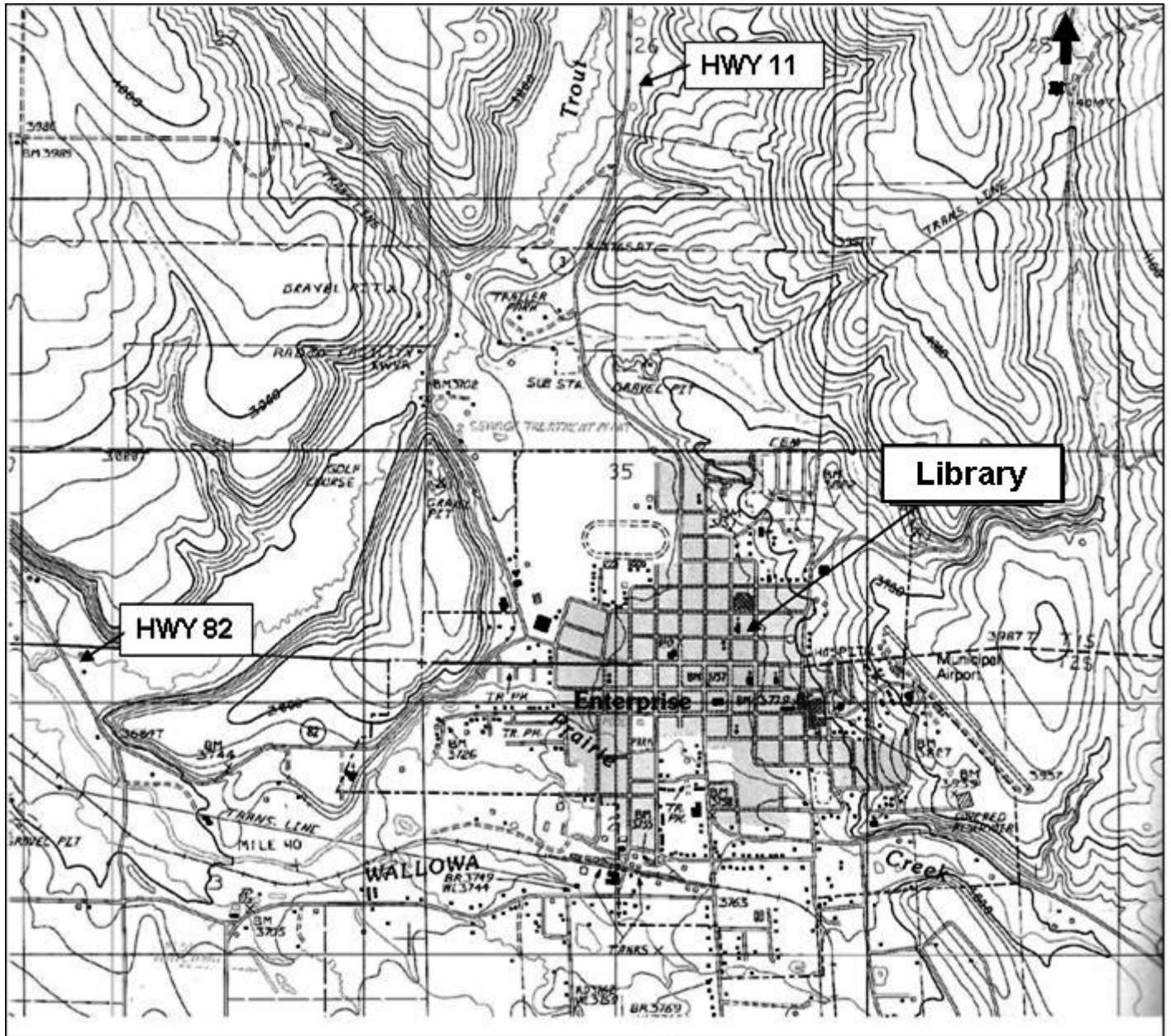
United States Department of the Interior
National Park Service

National Register of Historic Places Continuation Sheet

Enterprise Public Library
Name of Property
Wallowa Co., Oregon
County and State
Historic Resources of Downtown Enterprise, 1888-1956
Name of multiple listing (if applicable)

Section number Additional Documentation Page 25

Figure 1: Enterprise, Oregon, USGS Topographic Map Enterprise Quadrangle



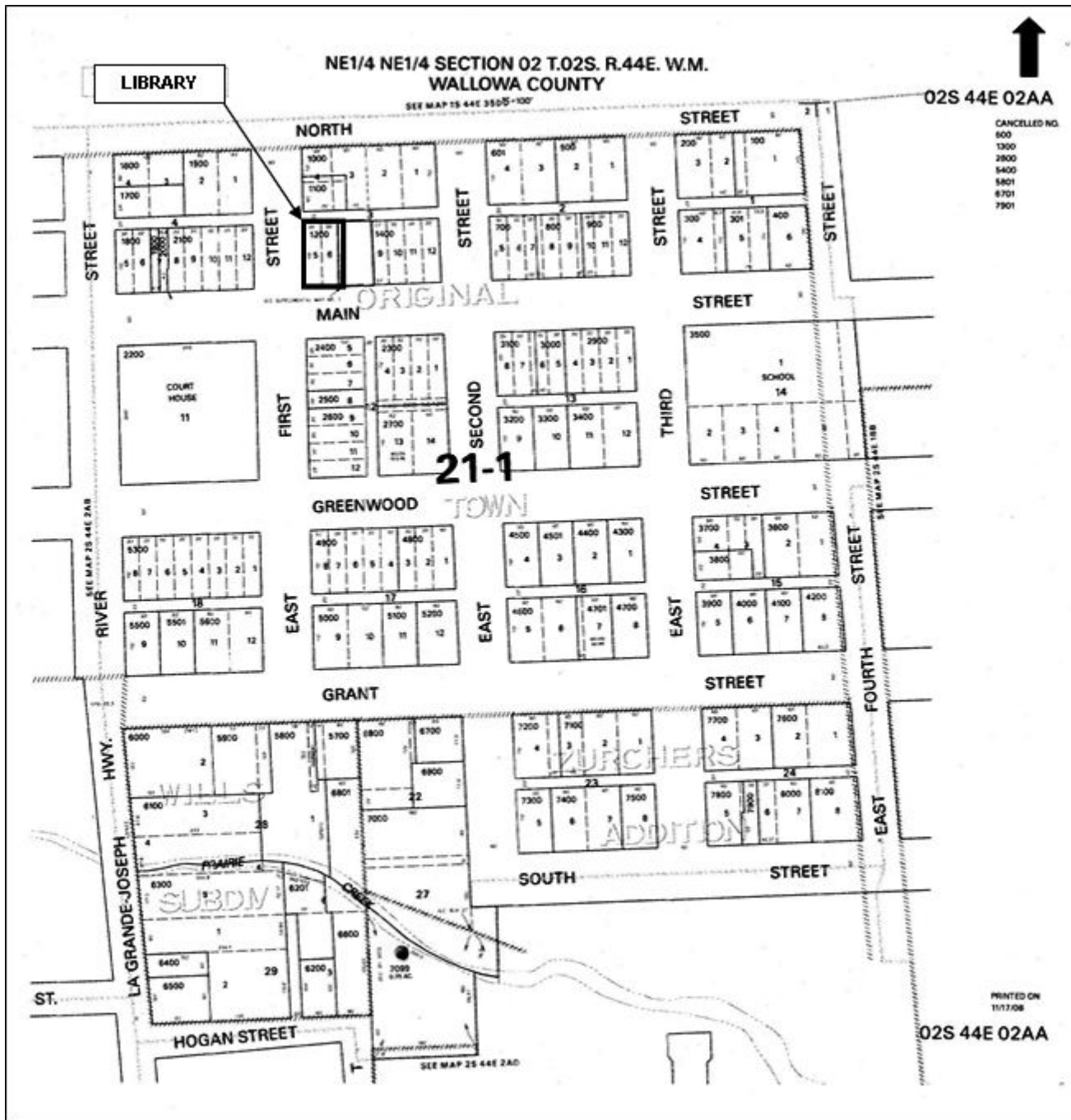
United States Department of the Interior
National Park Service

National Register of Historic Places Continuation Sheet

Section number Additional Documentation Page 26

Enterprise Public Library
Name of Property
Wallowa Co., Oregon
County and State
Historic Resources of Downtown
Enterprise, 1888-1956
Name of multiple listing (if applicable)

Figure 2: Tax Lot Map



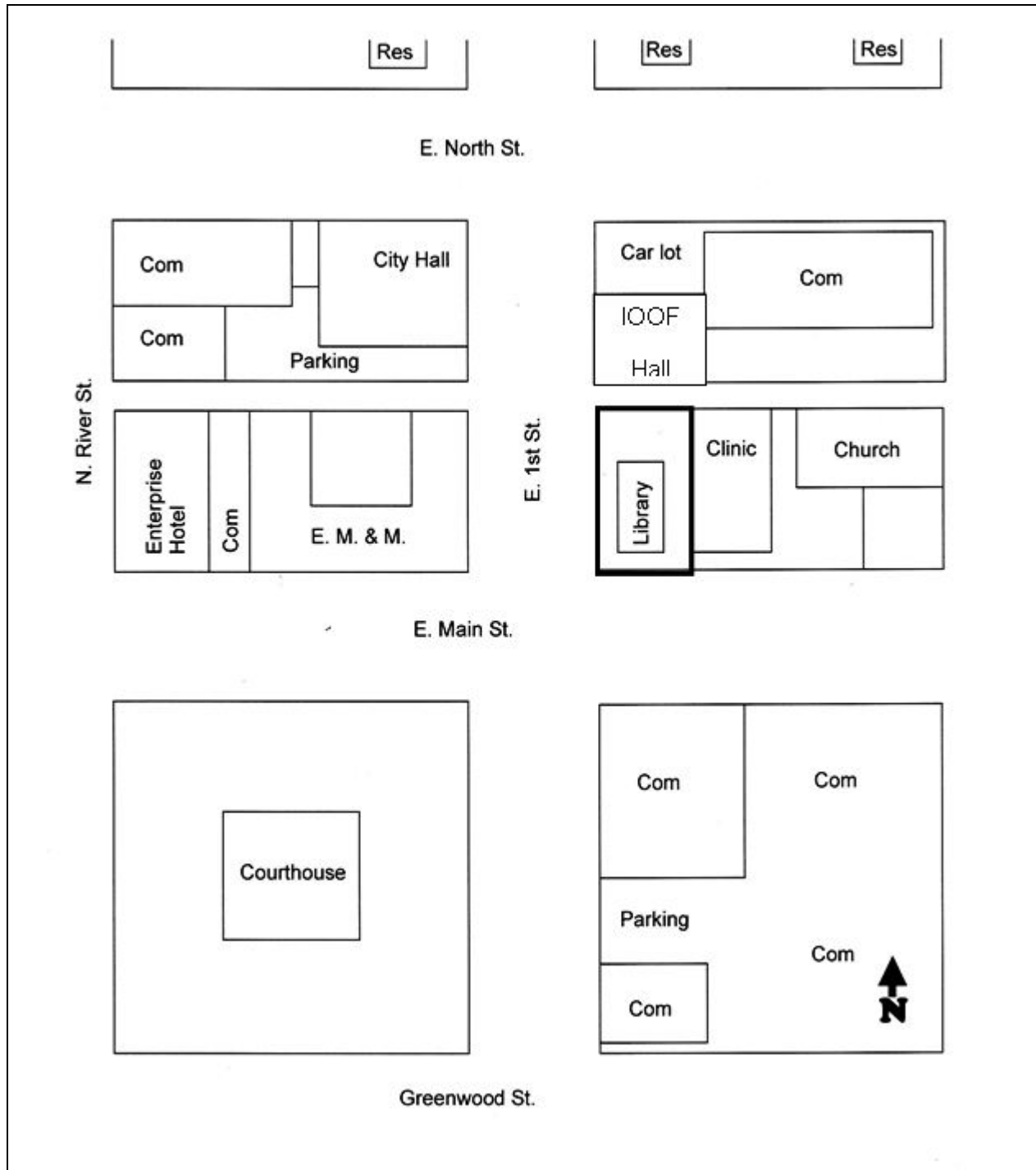
United States Department of the Interior
National Park Service

National Register of Historic Places Continuation Sheet

Section number Additional Documentation Page 27

Enterprise Public Library
Name of Property
Wallowa Co., Oregon
County and State
Historic Resources of Downtown Enterprise, 1888-1956
Name of multiple listing (if applicable)

Figure 3: Area Map. Enterprise Public Library in relation to the City Hall, IOOF Hall, Wallowa County Courthouse, and EM&M Co. buildings in downtown Enterprise



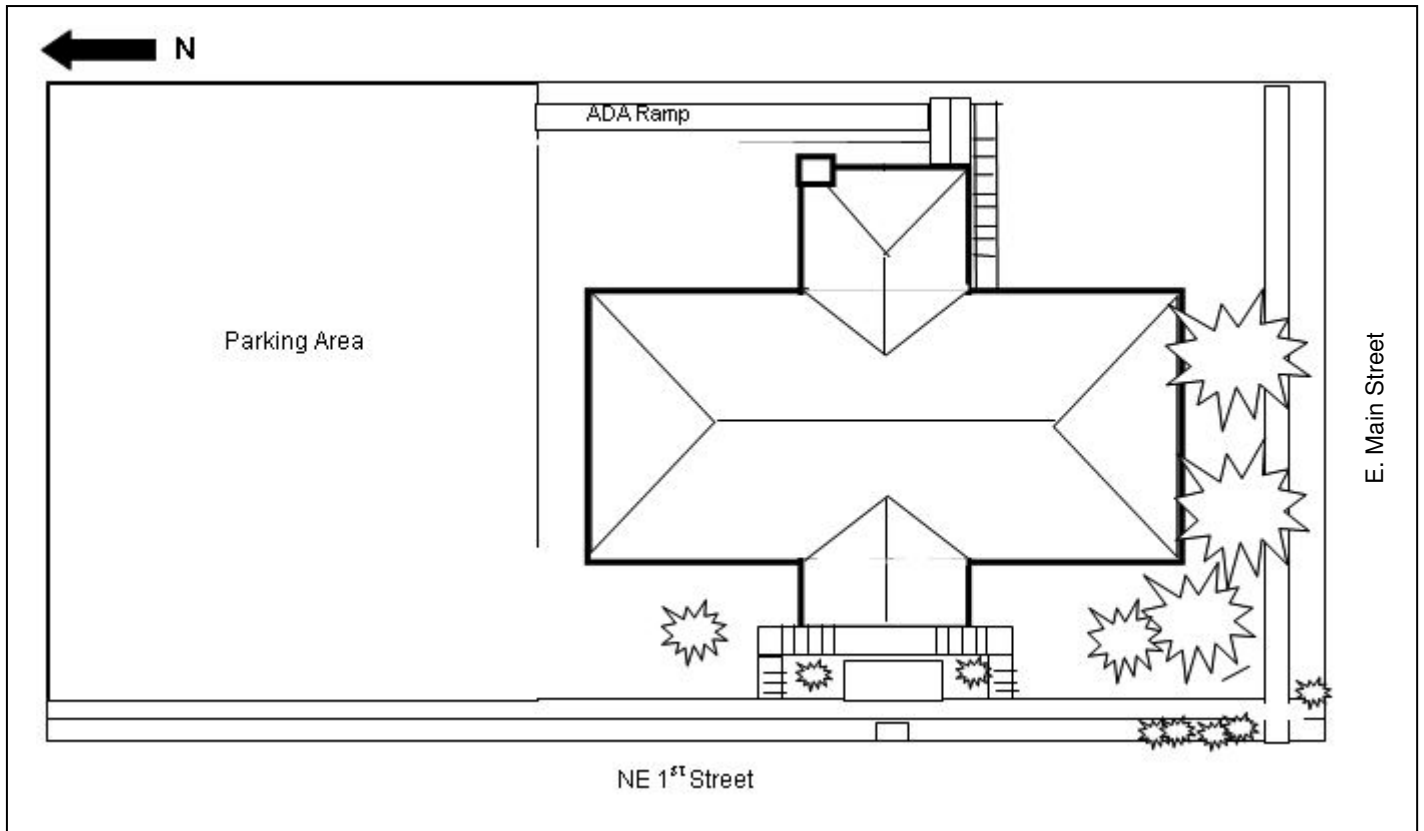
United States Department of the Interior
National Park Service

National Register of Historic Places Continuation Sheet

Section number Additional Documentation Page 28

Enterprise Public Library
Name of Property
Wallowa Co., Oregon
County and State
Historic Resources of Downtown Enterprise, 1888-1956
Name of multiple listing (if applicable)

Figure 4: Site Plan



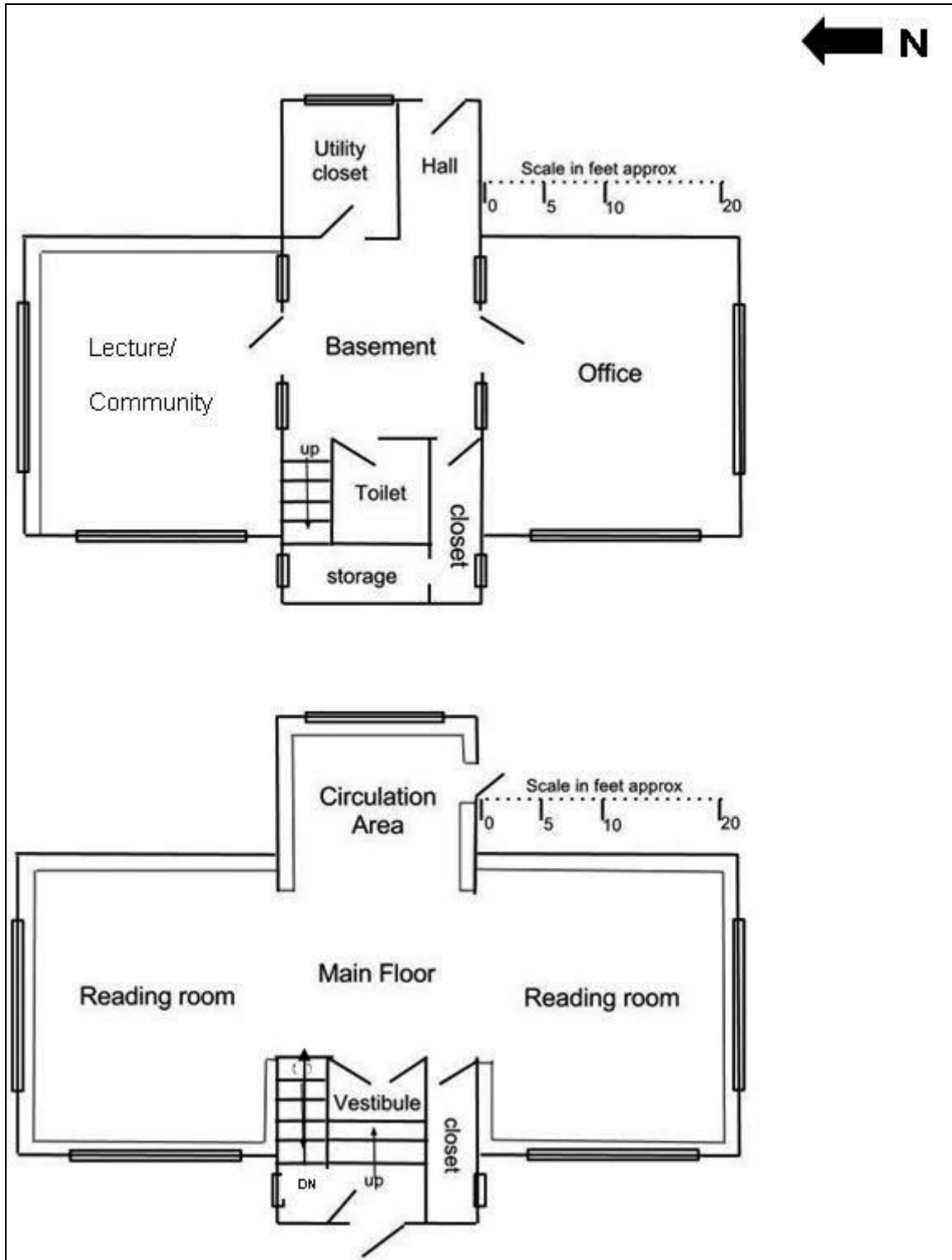
United States Department of the Interior
National Park Service

National Register of Historic Places Continuation Sheet

Enterprise Public Library
Name of Property
Wallowa Co., Oregon
County and State
Historic Resources of Downtown Enterprise, 1888-1956
Name of multiple listing (if applicable)

Section number Additional Documentation Page 29

Figure 5: Basement and Main Floor Plans



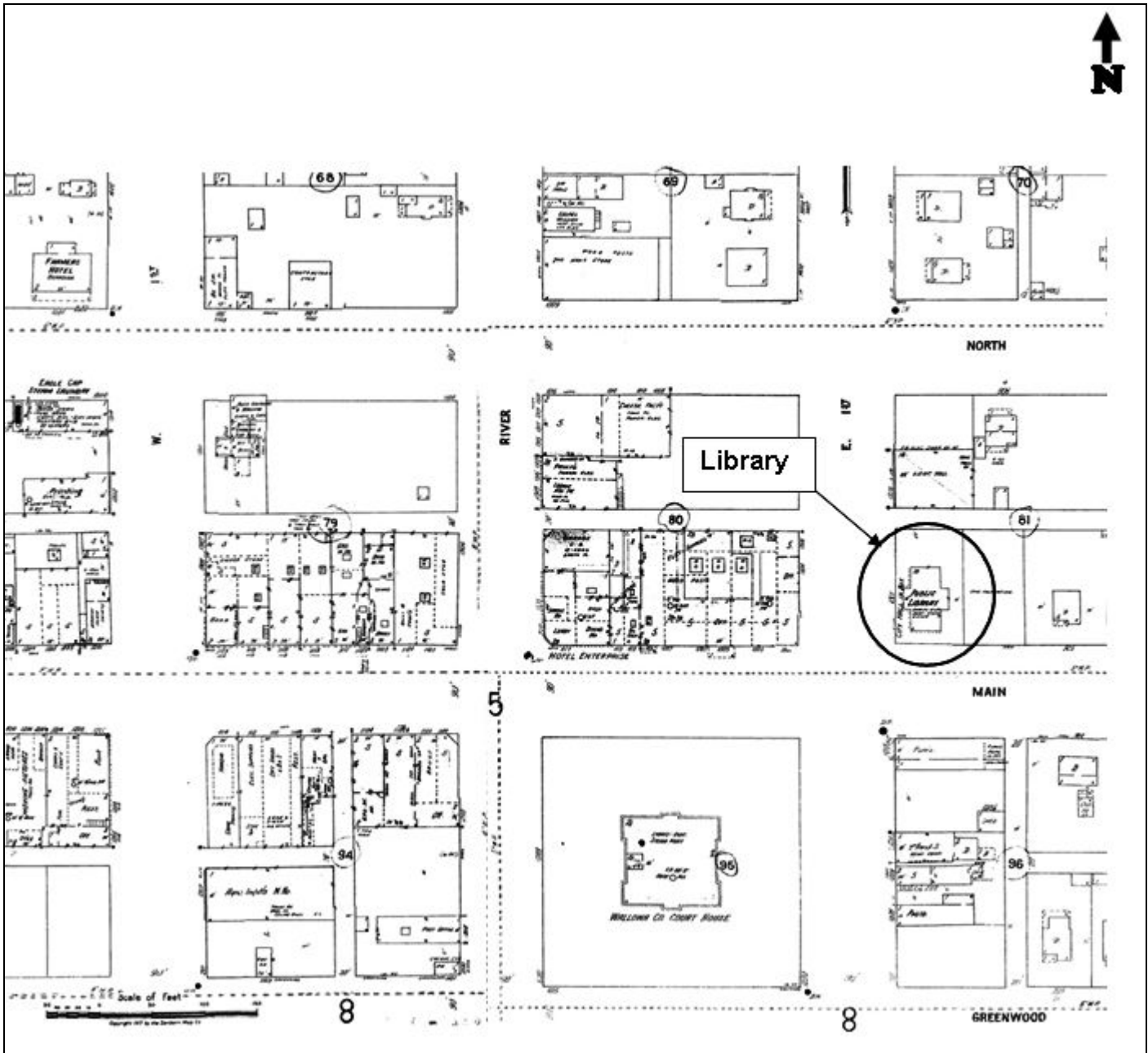
United States Department of the Interior
National Park Service

National Register of Historic Places Continuation Sheet

Enterprise Public Library
Name of Property
Wallowa Co., Oregon
County and State
Historic Resources of Downtown Enterprise, 1888-1956
Name of multiple listing (if applicable)

Section number Additional Documentation Page 30

Figure 6: 1917 Sanborn Fire Insurance Map updated to 1941 of downtown Enterprise



United States Department of the Interior
National Park Service

National Register of Historic Places Continuation Sheet

Section number Documents Page 31

Enterprise Public Library
Name of Property
Wallowa Co., Oregon
County and State
Historic Resources of Downtown Enterprise, 1888-1956
Name of multiple listing (if applicable)

Figure 7: Historic photographs of the library exterior c. 1914 (Enterprise Library collection)



United States Department of the Interior
National Park Service

National Register of Historic Places Continuation Sheet

Section number Documents Page 32

Enterprise Public Library
Name of Property
Wallowa Co., Oregon
County and State
Historic Resources of Downtown Enterprise, 1888-1956
Name of multiple listing (if applicable)

Figure 8: "Library is Moved to New Building" (*Enterprise Record Chieftain*, March 12, 1914)

LIBRARY IS MOVED TO NEW BUILDING

CARNEGIE STRUCTURE ACCEPTED AND PUT TO USE—MORE BOOKS ARE NEEDED.

The new Carnegie library in Enterprise was accepted by the library board and by the city council last Saturday. Both bodies met in the building at the same time. The library board voted to accept the structure, and then the council ratified this action, and the whole thing was over.

On Monday the books and furniture were moved into the new building, under the direction of Mrs. Bertha Millard, librarian, and Mrs. J. P. Sanders, secretary, and Mrs. Carl Roe, member, of the library board. So now the new library is an accomplished fact.

The building cost the Carnegie Corporation and the city a total of only \$5,012, as it stands, complete with heating plant, plumbing, electric fixtures and furnishings. John Oberg, the contractor, bid so low that he lost several hundred dollars on the job. In fact it is stated that at a conservative figure the finished building is worth \$6,000. Notwithstanding his low bid, Mr. Oberg slighted nothing, and the structure throughout is substantial and well finished.

The book shelves are so much more extensive than in the old building that it is apparent at once that more books should be provided. The collection of scientific works presented to the library by Prof. W. A. Henry will find a fitting place on the shelves, but still many will be left vacant. When the new building was proposed a year ago there was talk of starting a movement to raise more money to swell the collection. This will be taken up shortly, and will be continued until many standard works, including a complete reference library, has been added.

In the building there are two large bright reading rooms, each supplied liberally with magazines and periodicals. One room is for adults and the other for young people and children. Each room has a long reading table surrounded by comfortable chairs. The librarian's desk is in the middle, directly in front of the entrance.

The walls of these rooms will be adorned, it is expected, with handsome photographs of Wallowa county views. It has been planned, also, to gather into the library a great collection of photographs which will give a pictorial history of the county. In future years such pictures will be of intense interest and of great historical value.

In all departments the library is for the free use of all visitors. People in from out of town are particularly invited to make use of it. They can rest and enjoy reading the magazines and books at the same time. The library has been provided for all who come to Enterprise, not for the city residents alone.

The basement of the building has two good sized rooms that will be available for gatherings of all kinds affecting the general public welfare. No partizan meetings whatever will be permitted. The city council will meet in one of these rooms, which will be open for citizens' gatherings.

That the new library will be of great value to the community there can be no doubt. It will lead to the collection of many valuable books and will be a great educational factor in the town and surrounding country. It will be a meeting place for citizens. The building adorns the court house square, which it faces, contributing much to the substantial appearance of the town. As soon as the season advances, the grounds will be graded and a lawn started.

United States Department of the Interior
National Park Service

National Register of Historic Places Continuation Sheet

Section number Documents Page 33

Enterprise Public Library
Name of Property
Wallowa Co., Oregon
County and State
Historic Resources of Downtown Enterprise, 1888-1956
Name of multiple listing (if applicable)

Figure 9: Top Photograph: Interior of library with long-time librarian Bertha Millard and reading room in background, "The History of Wallowa County." Bottom Photograph: Current photograph of the original drinking fountain, now located on the lawn of the Wallowa County Courthouse. The fountain was originally near the southwest corner of the library tax lot (see fountain in historic photograph, Figure 7).



Bertha Millard inside City Library



United States Department of the Interior
National Park Service

National Register of Historic Places Continuation Sheet

Section number Documents Page 34

Enterprise Public Library
Name of Property
Wallowa Co., Oregon
County and State
Historic Resources of Downtown Enterprise, 1888-1956
Name of multiple listing (if applicable)

Figure 10: Suggested library floor plans from "Notes for the Erection of Library Buildings," Carnegie Corporation, 1911. Plan 'A', the first floor plan resembles the layout of the Enterprise Library.

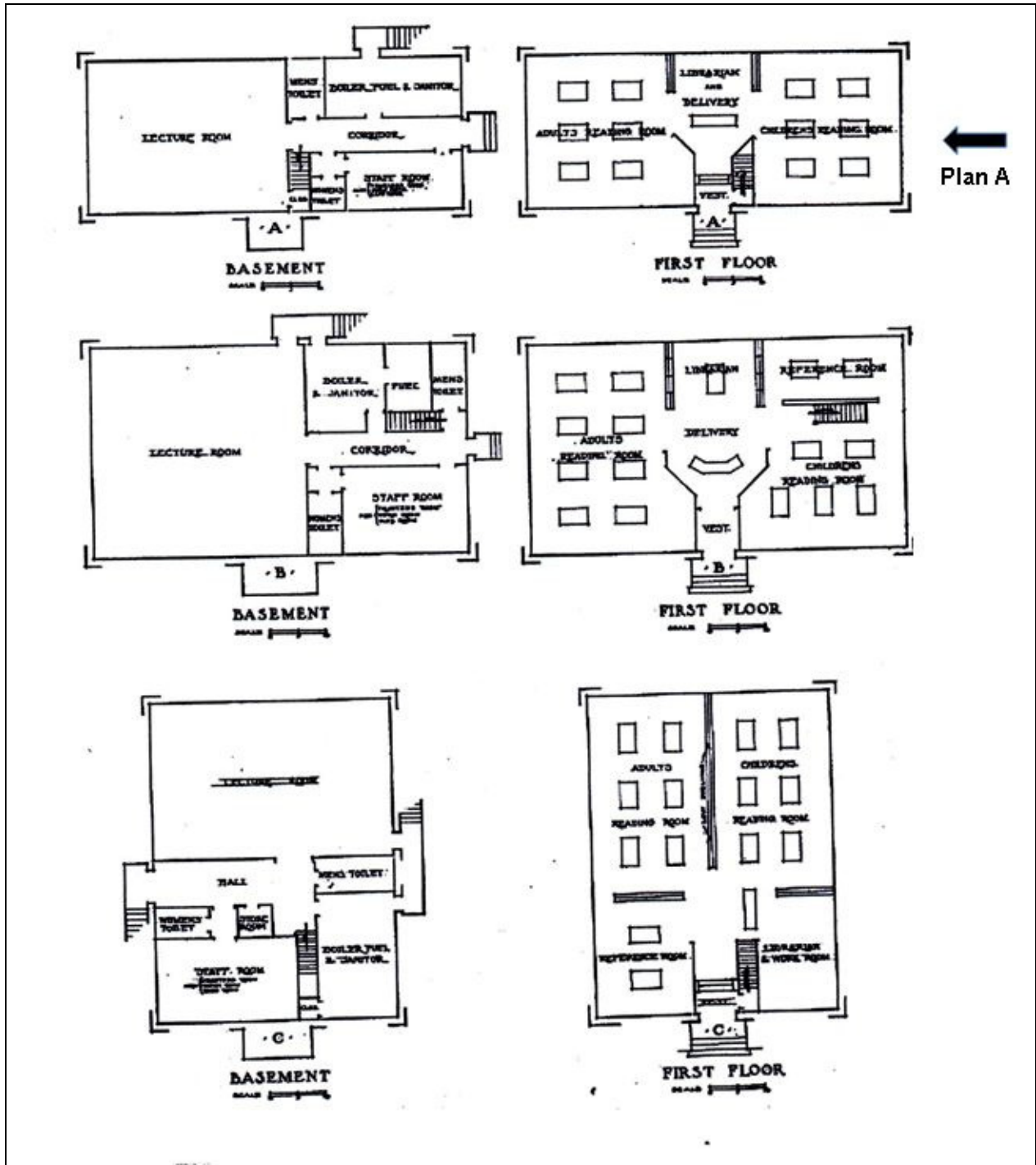




Photo 1 of 14: Looking north from NE 1st and E Main streets with the historic EM&M Building opposite the library and Enterprise IOOF Hall in background. West (front) and south facades of library visible.



Photo 2 of 14: West façade (front), looking east.



Photo 3 of 14: West façade, looking east at central entrance.



Photo 4 of 14: North façade and part of east (rear) facade, looking southwest with parking lot in foreground and Wallowa County Courthouse in background.



Photo 5 of 14: North façade, looking south.



Photo 6 of 14: East façade, looking southwest at large arched rear window in center wing.



Photo 7 of 14: South and east (rear) facades showing 2012 ADA ramp and rear door to main library level, looking northerly.



Photo 8 of 14: South façade, looking north.



Photo 9 of 14: Entrance doors on west wall of circulation area, looking northwest.



Photo 10 of 14: Looking at south reading room from circulation area.



Photo 11 of 14: Circulation desk looking east.



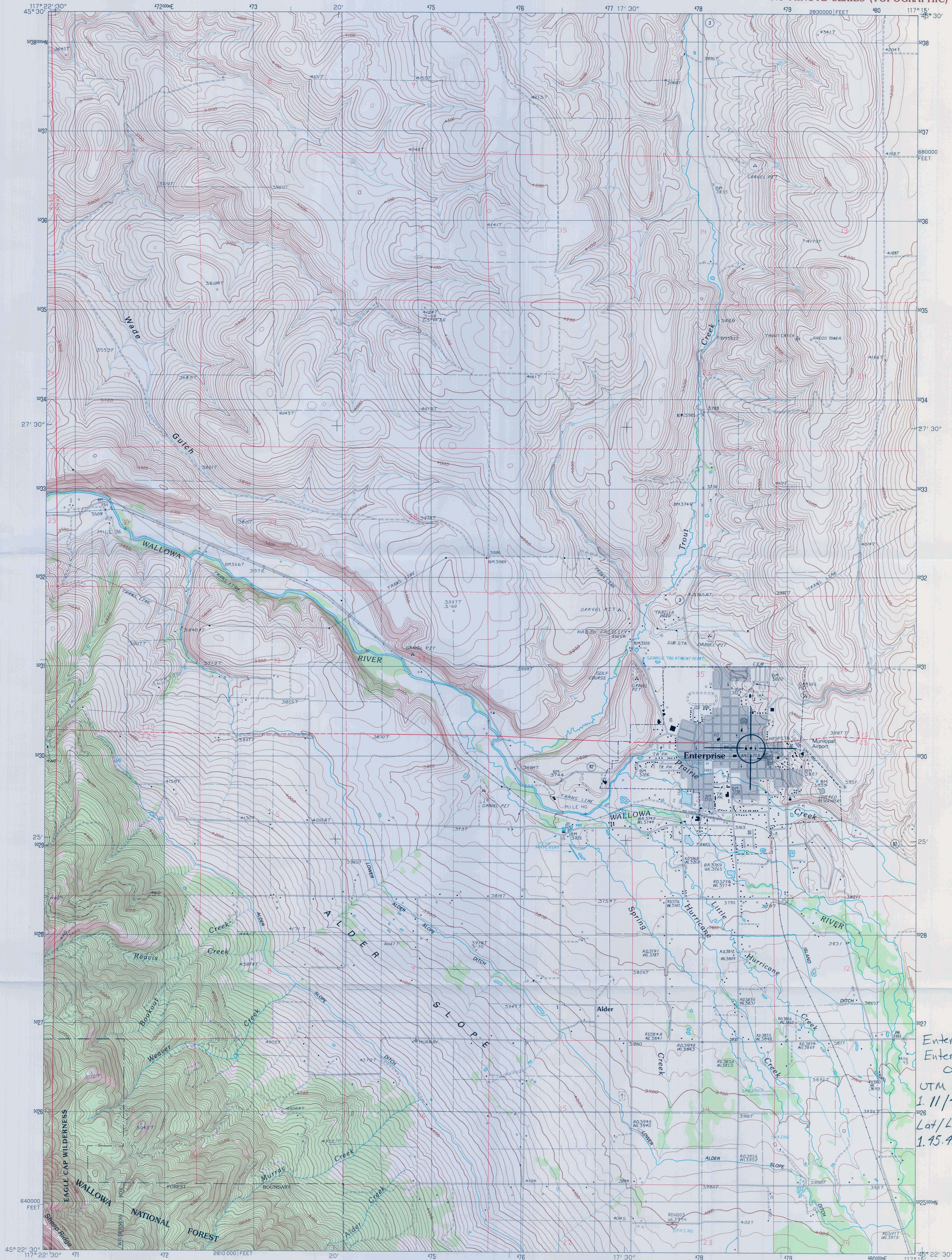
Photo 12 of 14: Basement lobby looking north at door opening to former lecture/community room (under north wing).



Photo 13 of 14: 1940 children's library table and chairs in lecture/community room (north side of basement).



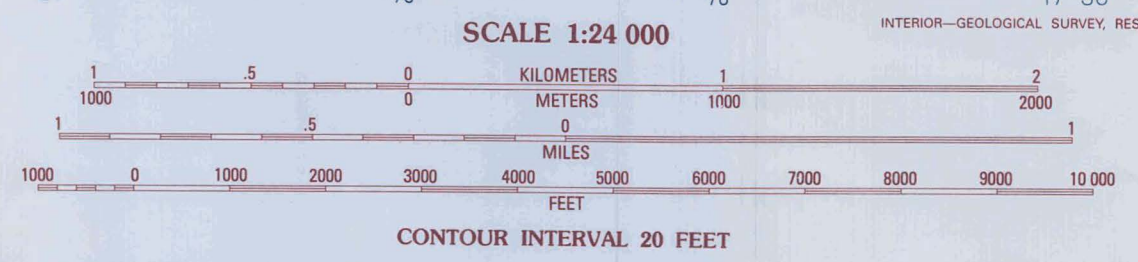
Photo 14 of 14: Detail of doorknob in former lecture/community room, looking south.



Enterprise Public Library
Enterprise, Wallowa Co.,
OR
UTM Reference
11 478537/5030233
Lat/Long Reference
45.425285/-117.274354

PRODUCED BY THE UNITED STATES GEOLOGICAL SURVEY CONTROL BY...
FIELD CHECKED... 1981
PROJECTION... LAMBERT CONFORMAL CONIC
GRID: 1000-METER UNIVERSAL TRANSVERSE MERCATOR... ZONE 11
UTM GRID DECLINATION... OREGON, NORTH ZONE
17 30 EAST
VERTICAL DATUM... NATIONAL GEODETIC VERTICAL DATUM OF 1929
HORIZONTAL DATUM... 1927 NORTH AMERICAN DATUM
To place on the predicted North American Datum of 1983, move the projection lines as shown by dashed corner ticks (17 meters north and 79 meters east)
There may be private inholdings within the boundaries of any Federal or State reservations shown on this map
Gray tint indicates area in which selected buildings are shown
Where omitted, land lines have not been established

PROVISIONAL MAP
Produced from original manuscript drawings. Information shown as of date of field check.



ROAD LEGEND

Improved Road
Unimproved Road
Trail

Interstate Route U. S. Route State Route

ENTERPRISE, OREGON
PROVISIONAL EDITION 1990

45117-D3-TF-024

1	2	3	1 Evans
4	5	6	2 Hicks Spring
7	8	9	3 Elk Mountain
			4 Lostine
			5 Joseph NW
			6 North Mission Meadows
			7 Chief Joseph Mtn.
			8 Joseph

ADJOINING 7.5 QUADRANGLE NAMES





PUBLIC LIBRARY

NO PARKING

PUBLIC LIBRARY

Public Library
Hours:
Monday 10 AM - 4 PM
Tuesday 10 AM - 4 PM
Wednesday 10 AM - 4 PM
Thursday 10 AM - 4 PM
Friday 10 AM - 4 PM
Saturday 10 AM - 4 PM
Sunday Closed
OPEN





LIBRARY
PARKING
ONLY

LIBRARY
PARKING
ONLY

STOP



LIBRARY
PARKING
ONLY

LIBRARY
PARKING
ONLY















PLEASE
CLOSE DOOR

Please
Turn off lights
and Close door
when you leave

10





UNITED STATES DEPARTMENT OF THE INTERIOR
NATIONAL PARK SERVICE

NATIONAL REGISTER OF HISTORIC PLACES
EVALUATION/RETURN SHEET

REQUESTED ACTION: NOMINATION

PROPERTY Enterprise Public Library
NAME:

MULTIPLE Downtown Enterprise MPS
NAME:

STATE & COUNTY: OREGON, Wallowa

DATE RECEIVED: 8/16/13 DATE OF PENDING LIST: 9/10/13
DATE OF 16TH DAY: 9/25/13 DATE OF 45TH DAY: 10/02/13
DATE OF WEEKLY LIST:

REFERENCE NUMBER: 13000806

REASONS FOR REVIEW:

APPEAL: N DATA PROBLEM: N LANDSCAPE: N LESS THAN 50 YEARS: N
OTHER: N PDIL: N PERIOD: N PROGRAM UNAPPROVED: N
REQUEST: N SAMPLE: N SLR DRAFT: N NATIONAL: N

COMMENT WAIVER: N

ACCEPT RETURN REJECT 9.30.13 DATE

ABSTRACT/SUMMARY COMMENTS:

Entered in
The National Register
of
Historic Places

RECOM./CRITERIA _____

REVIEWER _____ DISCIPLINE _____

TELEPHONE _____ DATE _____

DOCUMENTATION see attached comments Y/N see attached SLR Y/N

If a nomination is returned to the nominating authority, the nomination is no longer under consideration by the NPS.



Oregon

John A. Kitzhaber, MD, Governor

Parks and Recreation Department

State Historic Preservation Office

725 Summer St NE, Ste C

Salem, OR 97301-1266

(503) 986-0690

Fax (503) 986-0793

www.oregonheritage.org



August 12, 2013

Ms. Carol Shull
National Register of Historic Places
USDOI National Park Service - Cultural Resources
1201 "Eye" Street NW, 8th Floor
Washington, D.C. 20005

Re: National Register Nominations

Dear Ms. Shull:

At the recommendation of the Oregon State Advisory Committee on Historic Preservation, I hereby nominate the following historic properties to the National Register of Historic Places.

NORTH PALESTINE BAPTIST CHURCH
NE ARNOLD AVE
ADAIR VILLAGE, BENTON COUNTY

GREEN, HARRY A AND ADA, HOUSE
3316 SE ANKENY ST
PORTLAND, MULTNOMAH COUNTY

ENTERPRISE PUBLIC LIBRARY
101 NE 1ST ST
ENTEPRISE, WALLOWA COUNTY

We appreciate your consideration of these nominations. If questions arise, please contact National Register and Survey Coordinator Ian Johnson at (503) 986-0678.

Sincerely,

for 
Roger Roper
Deputy State Historic Preservation

Encl.

