

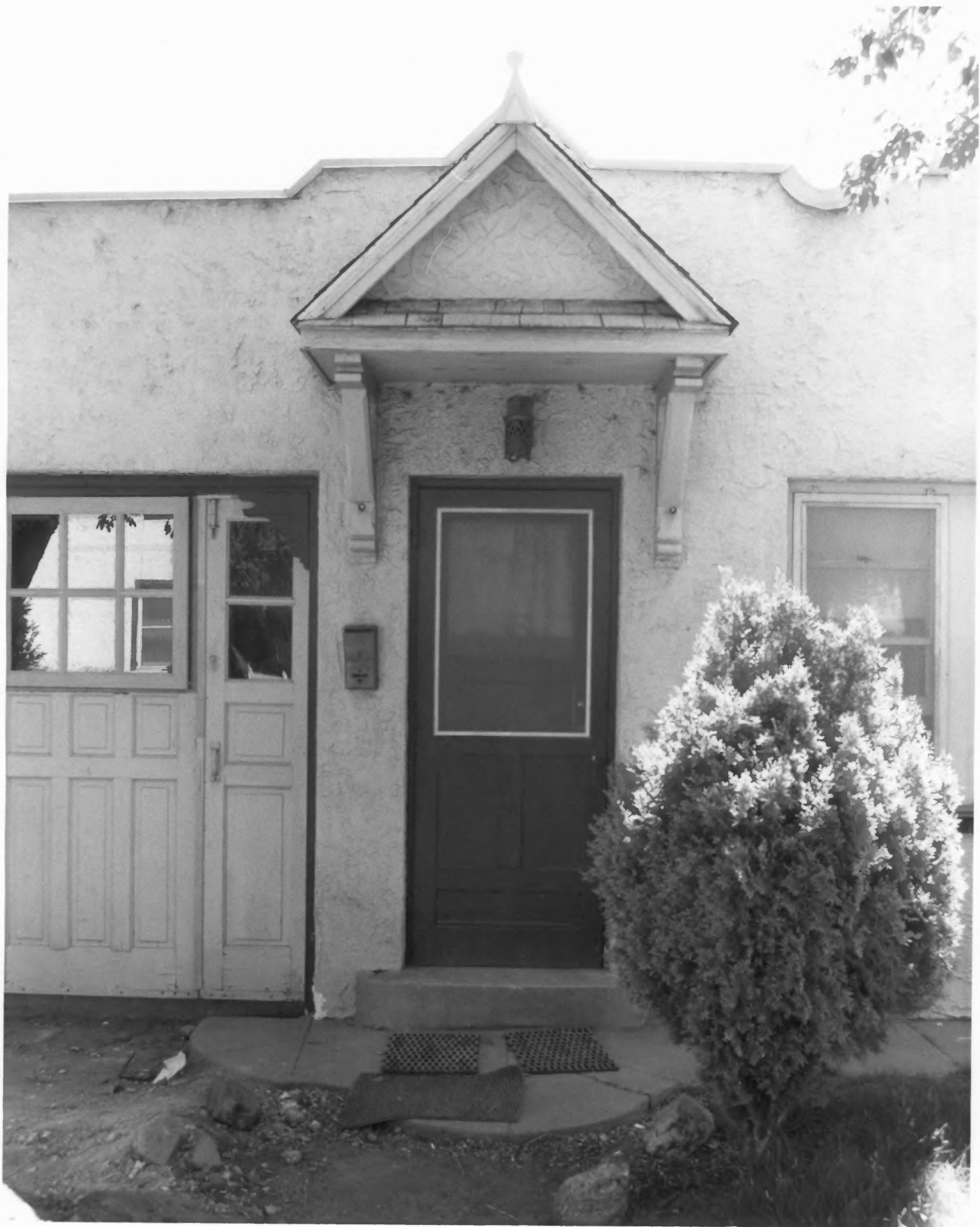


MOUNTAIN VIEW AUTO COURT

# 1





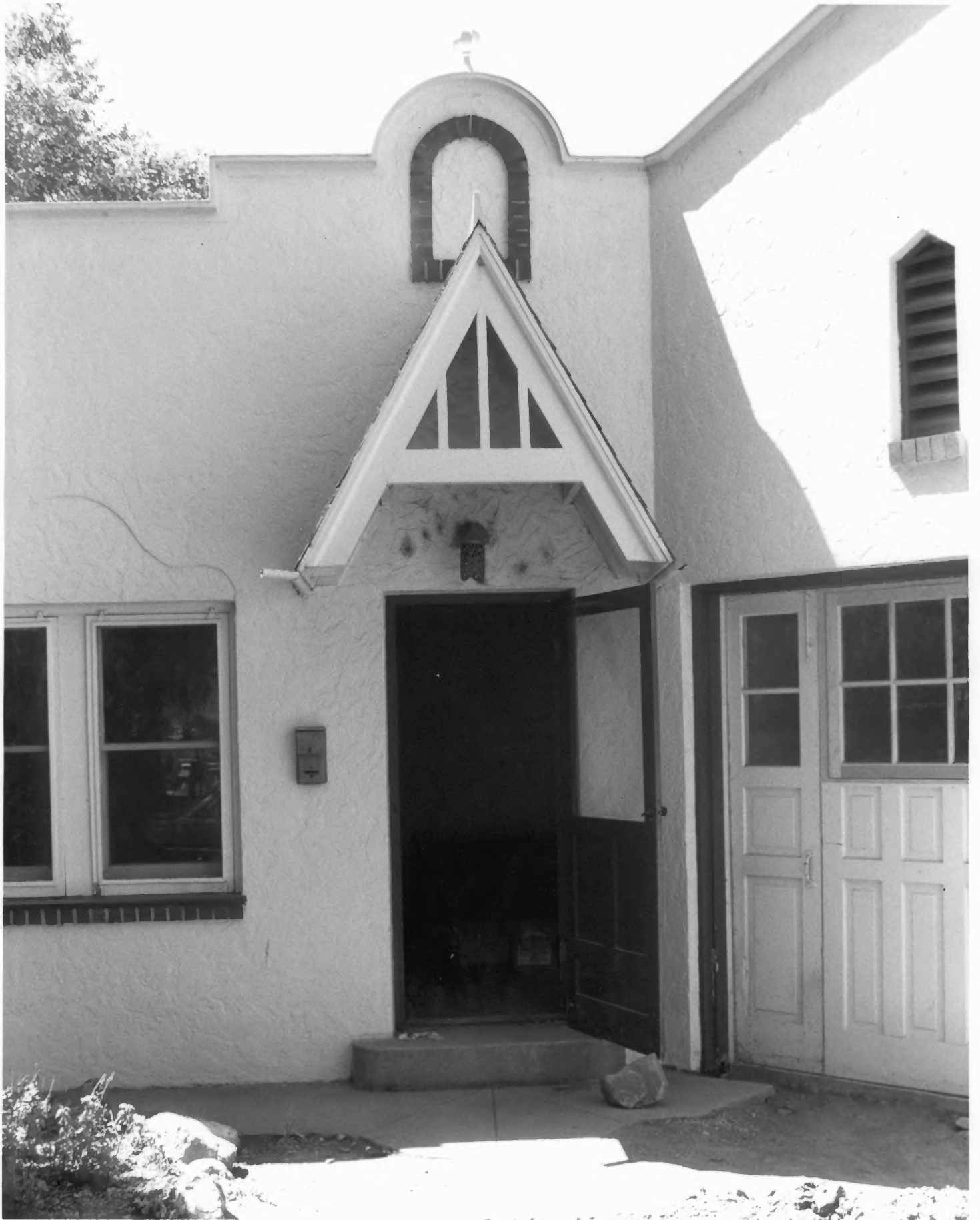




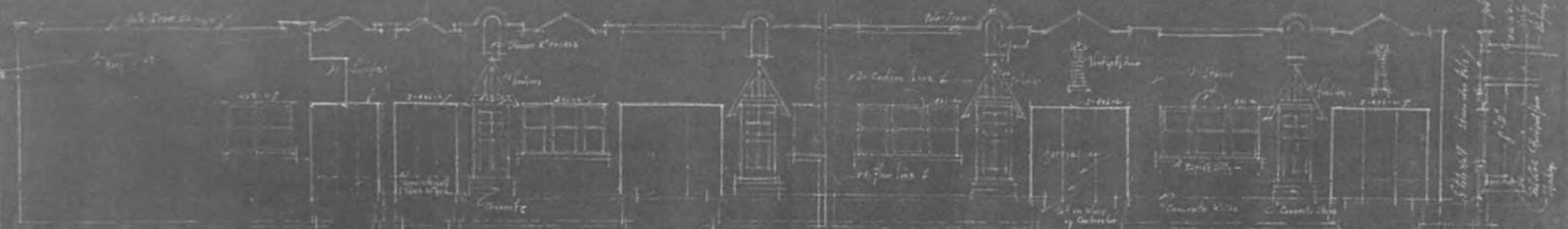






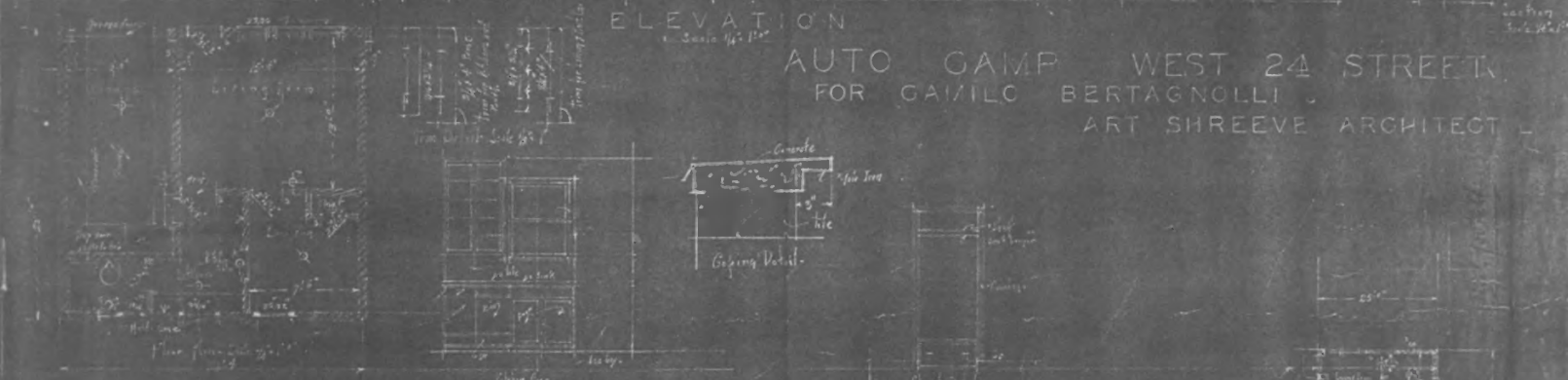




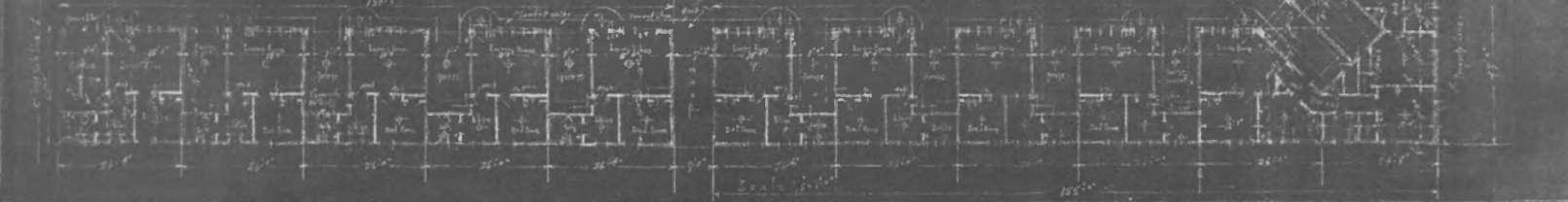


ELEVATION  
Scale 1/4" = 1'-0"

AUTO CAMP WEST 24 STREET  
FOR CAMILO BERTAGNOLLI  
ART SHREEVE ARCHITECT



FLOOR PLAN  
Scale 1/4" = 1'-0"

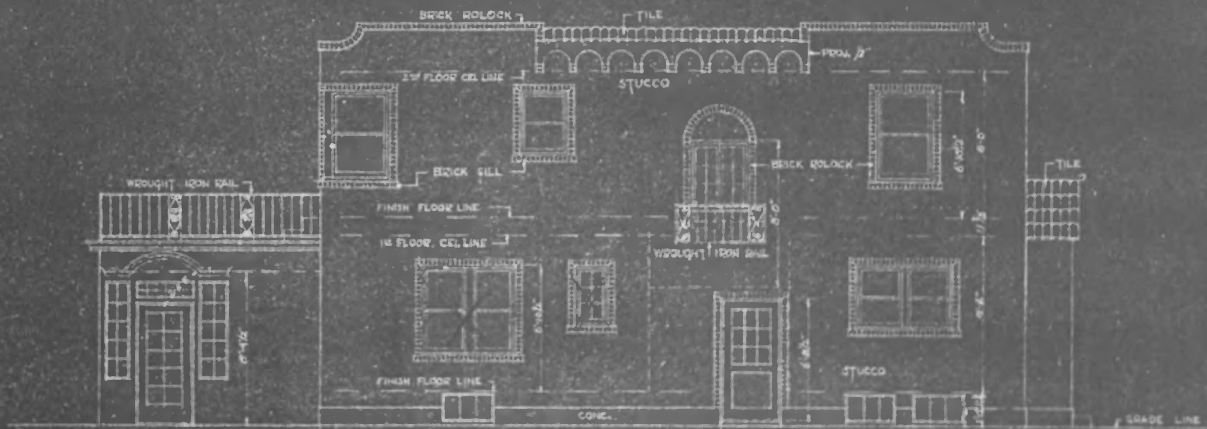


11/11/11

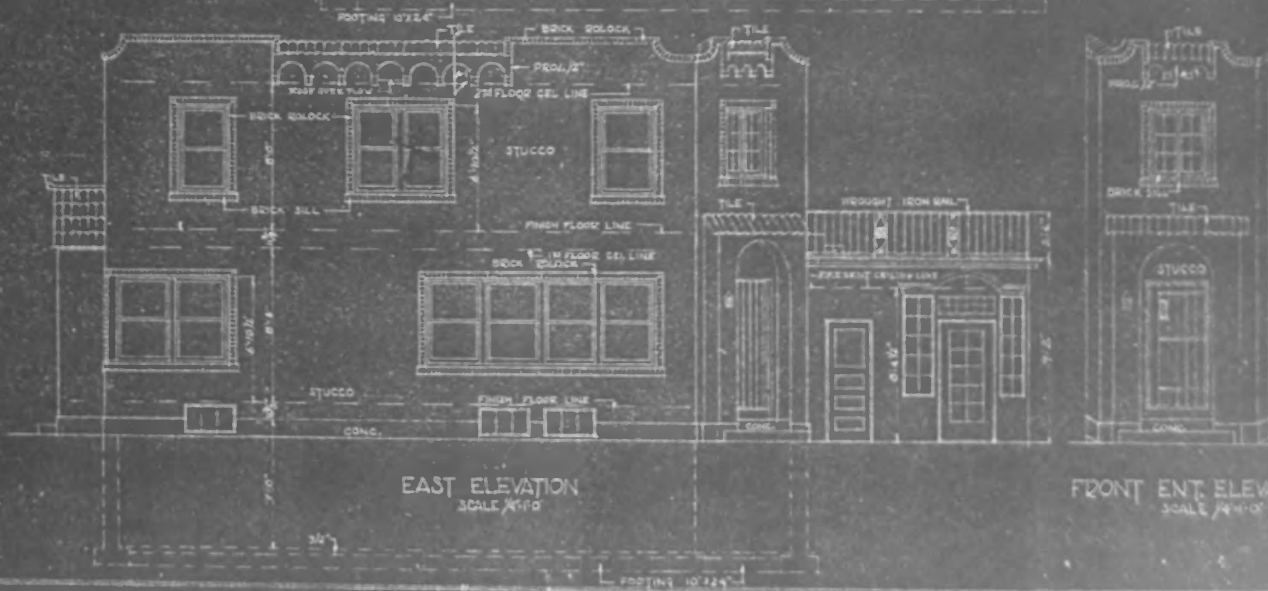
11/11/11

11/11/11

11/11/11



WEST ELEVATION  
SCALE 1/4" = 1'-0"



EAST ELEVATION  
SCALE 1/4" = 1'-0"

FRONT ENT. ELEVATION  
SCALE 1/4" = 1'-0"

AUGUST 16 1912

RESIDENCE AND OFFICE PLANS OF MOUNTAIN VIEW AUTO COURT

568 WEST 24th ST. OWNED BY  
C.J. BERTAGLIOLI  
CORNER 24th ST. UTAH  
GEORGE F. JOHNSON ARCHITECT  
20 CHURCH BLDG. SALT LAKE CITY, UTAH

SHEET NO 5

1000

1000

1000

1000



VACANCY  
MOUNTAIN VIEW

OFFICE  
Rm. 201







1. The first part of the document discusses the importance of maintaining accurate records of all transactions. It emphasizes that this is crucial for ensuring the integrity of the financial statements and for providing a clear audit trail. The text also mentions that proper record-keeping is essential for identifying and correcting errors in a timely manner.

2. The second part of the document focuses on the role of internal controls in preventing fraud and misstatements. It highlights that a strong internal control system is necessary to ensure that all transactions are properly authorized, recorded, and reviewed. The text also notes that internal controls should be designed to be effective and efficient, and should be regularly evaluated and updated as needed.

3. The third part of the document discusses the importance of transparency and communication in financial reporting. It emphasizes that providing clear and concise information to stakeholders is essential for building trust and confidence in the organization's financial performance. The text also mentions that transparency is a key component of good corporate governance and should be a priority for all organizations.

















