



*F.D. Roosevelt*

1. New garage (Newbold/Morgan Estate)
2. Hyde Park, New York
3. Bronwyn Krog
4. August 1978
5. NARO
6. east elevation
7. 1

*Sketches*<sup>CO</sup>  
*NY*

MAY 7 1979



*F. D. Roosevelt*

1. Old garage and shed (Newbold/Morgan Estate)
2. Hyde Park, New York
3. Bronwyn Krog
4. August 1978
5. NARO
6. east elevation
7. 2

*Butcher*  
*my* CO

MAY 7 1979



1. Cold frame (Newbold Morgan Estate)
2. Hyde Park, New York
3. Bronwyn Krog
4. August 1978
5. NARO
6. cold frame
7. 3

*Dutchess Co. NY*

MAY 7 1979



1. Water tower (Newbold-Morgan Estate
2. Hyde Park, New York
3. Bronwyn Krog
4. August 1978
5. NARO
6. water tower
7. 4

*Autelius Co  
ny*

MAY 7 1979





1. Pump House (Newbold-Morgan Estate)
2. Hyde Park, New York
3. Bronwyn Krog
4. August 1978
5. NARO
6. pump house and dry laid fieldstone fence
7. 5

*Blutiger CO  
NY*

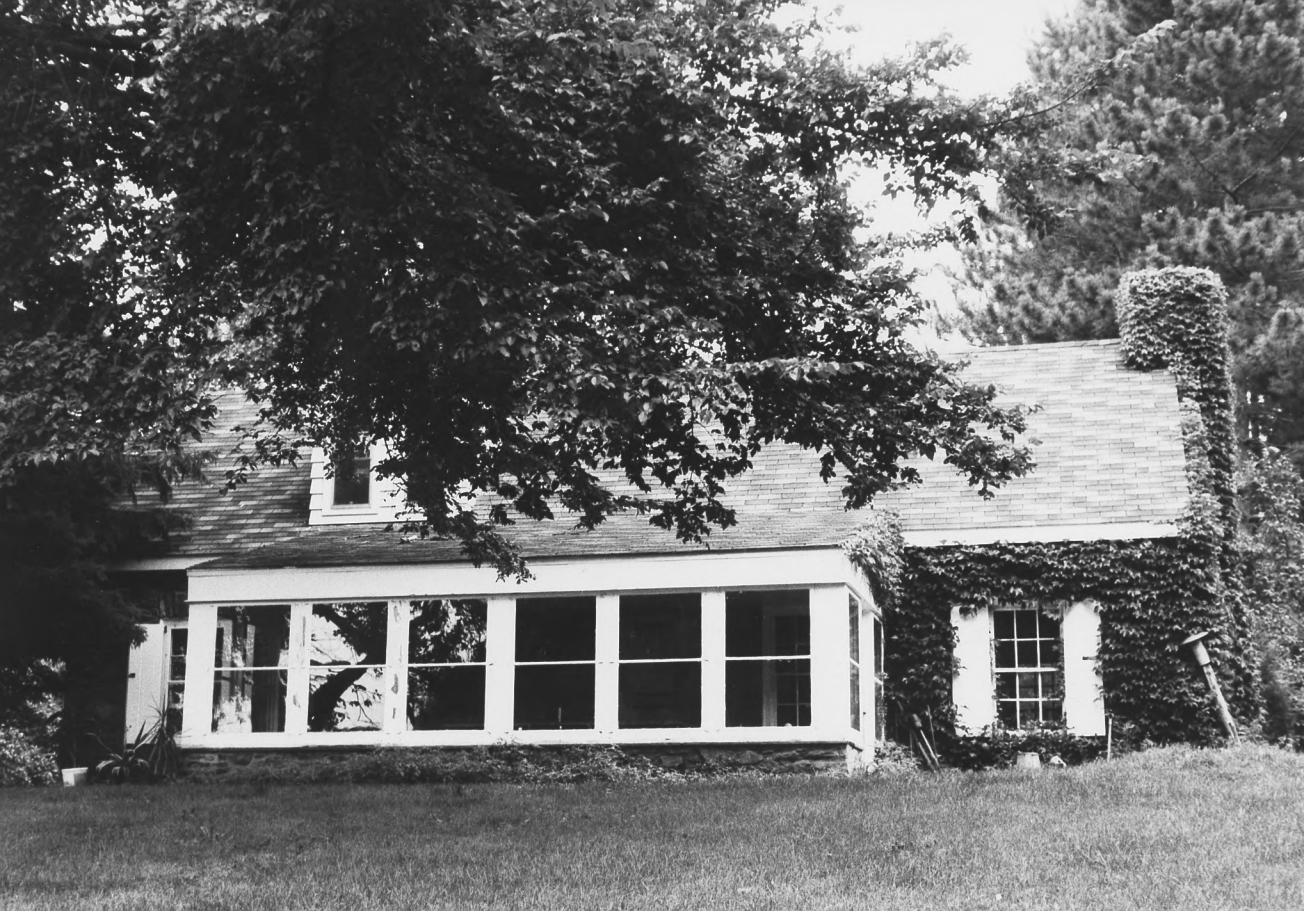
MAY 7 1979



1. Stone House (Newbold-Morgan Estate)
2. Hyde Park, New York
3. Bronwyn Krog
4. August 1978
5. NARO
6. west and south (front) elevation
7. 6

*Stutts Co  
ny*

MAY 7 1979

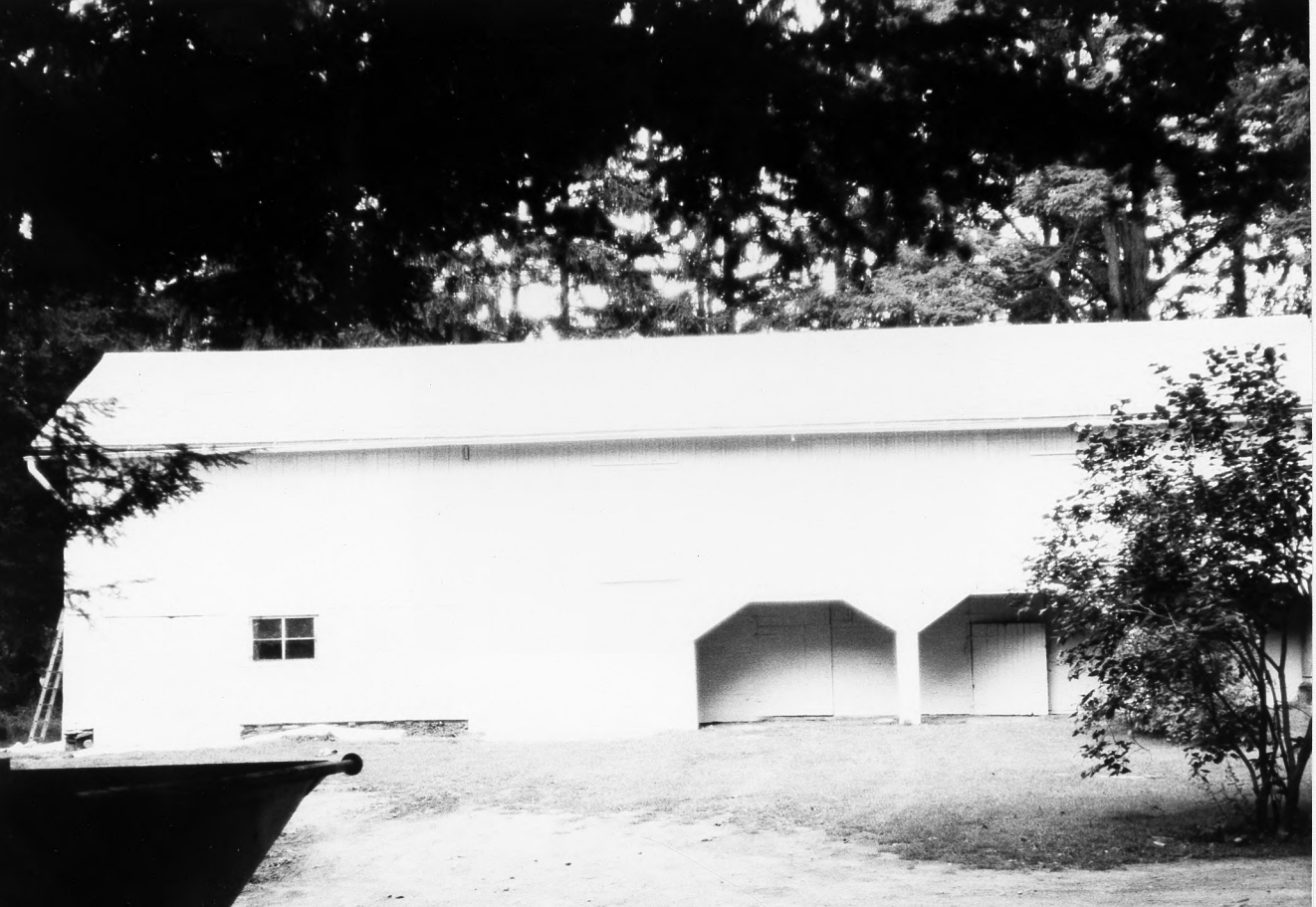


1. Stone Cottage (E.Roosevelt  
NHS)
2. Hyde Park, New York
3. Bronwyn Krog
4. August 1978
5. NARO
6. front elevation from lake at  
Val-Kill
7. 17

DEC 03 1979

20 of 22 ~~NOV 28 1979~~

MAR 20 1980  
DOE  
Dutchess Co.



- F.D. Roosevelt*
1. Old Barn (Morgan Mansion)
  2. Hyde Park, New York
  3. Bronwyn Krog *Dutchess Co.*
  4. August 1978
  5. NARO *ny*
  6. front elevation from courtyard
  7. 22

MAY 7 1979





1. Bellefield (Morgan Mansion)  
FDR NHS
2. Hyde Park, New York
3. Bronwyn Krog
4. August 1978
5. NARO
6. front elevation
7. 25

*Dutcher Co*  
*ny*

MAY 7 1979



1. Springwood (FDR NHS)
2. Hyde Park, New York
3. Bronwyn Krog
4. August 1978
5. NARO
6. front elevation FDR mansion
7. 26

*Dutchess Co  
ny*

MAY 7 1979



1. FD Roosevelt NHS
2. Hyde Park, New York
3. Bronwyn Krog
4. August 1978
5. NARO
6. Laundry
7. 27

*Dutchess Co  
ny*

MAY 7 1979



1. F.D. Roosevelt NHS
2. Hyde Park, New York
3. Bronwyn Krog
4. August 1978
5. NARO
6. Ram House
7. 28

*Dutchess Co  
ny*

MAY 7 1979





1. F.D.Roosevelt NHS
2. Hyde Park, New York
3. Bronwyn Krog
4. August 1978
5. NARO
6. Coach House and Stables
7. 29

*Dutchess Co  
ny*

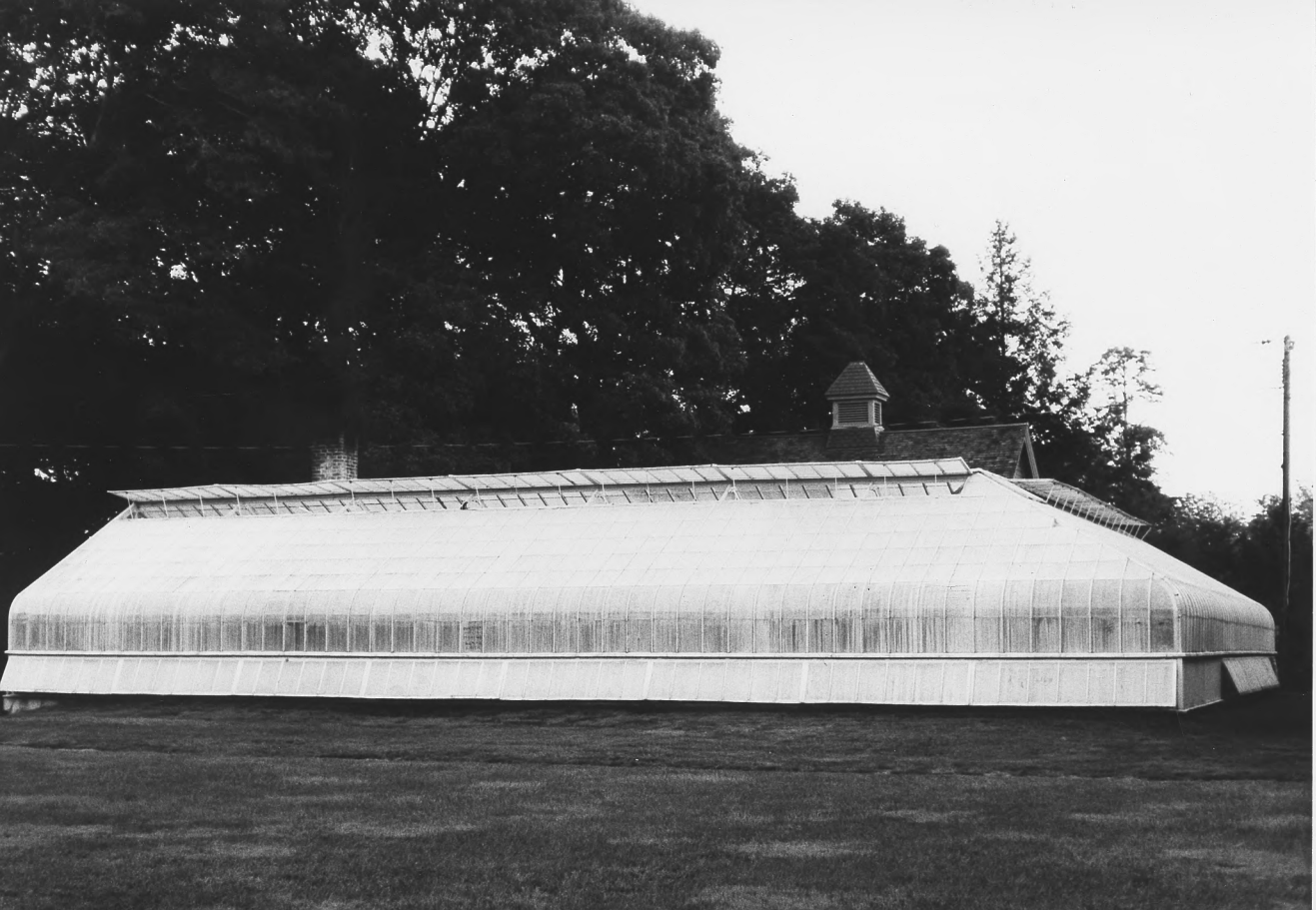
MAY 7 1979



1. F.D.Roosevelt NHS
2. Hyde Park, New York
3. Bronwyn Krog
4. August 1978
5. NARO
6. Reconstructed garage
7. 30

*Dutchess Co  
ny*


MAY 7 1979



1. F.D.Roosevelt NHS
2. Hyde Park, New York
3. Bronwyn Krog
4. August 1978
5. NARO
6. Greenhouse
7. 31

*Dutchess Co.  
ny*

MAY 7 1979



FRANKLIN DELANO ROOSEVELT  
1882 — 1945  
ANNA ELEANOR ROOSEVELT  
1884 — 1962

1. FDR National Historical Site
2. Hyde Park, New York
3. Bronwyn Krog
4. August 1978
5. NARO
6. Roosevelt Memorial and gravesite
7. 32

*Dutchess Co  
NY*

MAY 7 1979

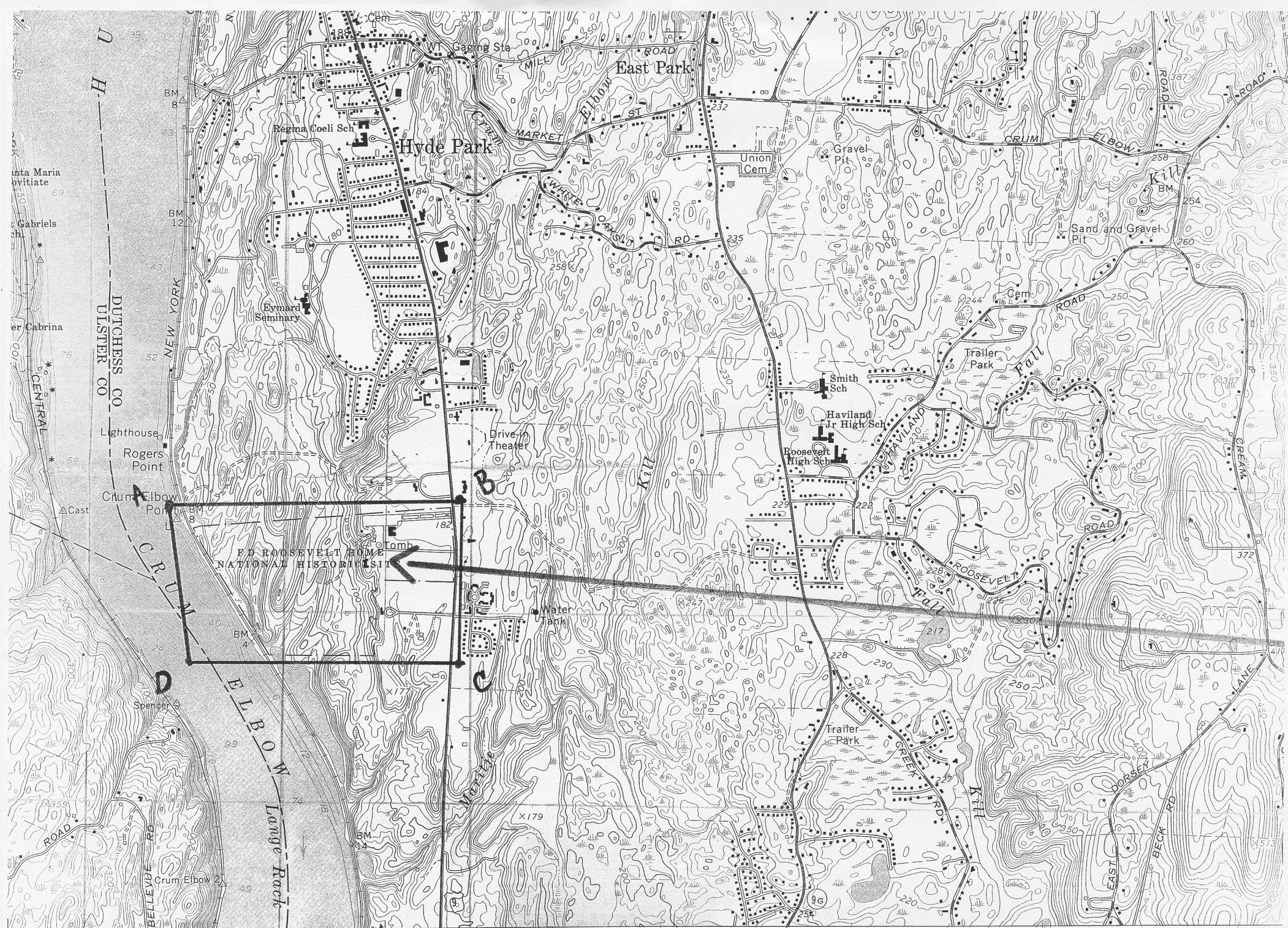




1. Large Ice House (Home of FDR NHS)
2. Hyde Park, New York
3. Bronwyn Krog
4. August 1978
5. NARO
6. north elevation
7. 36

*Autumn  
ny* <sup>cu</sup>

MAY 7 1979



30" 587 588 (POUGHKEEPSIE) 6267 III NW POUGHKEEPSIE 3.4 MI. NEW YORK CITY 88 MI 590 55' POUGHKEEPSIE (U.S. 9) 3.2 MI. INTERIOR—GEOLOGICAL SURVEY, WASHINGTON, D. C.—1971 592 593000m.E.

SCALE 1:24 000

1 MILE

ROAD CLASSIFICATION