



High-Service Engine building. Built in 1921,
facing Cross Bayou

#2 Shreveport Water Works Co., Pump
Station *La, Caddo Parish*
On Cross Bayou off Common Street Ex-
tension, Shreveport
Summer of 1977

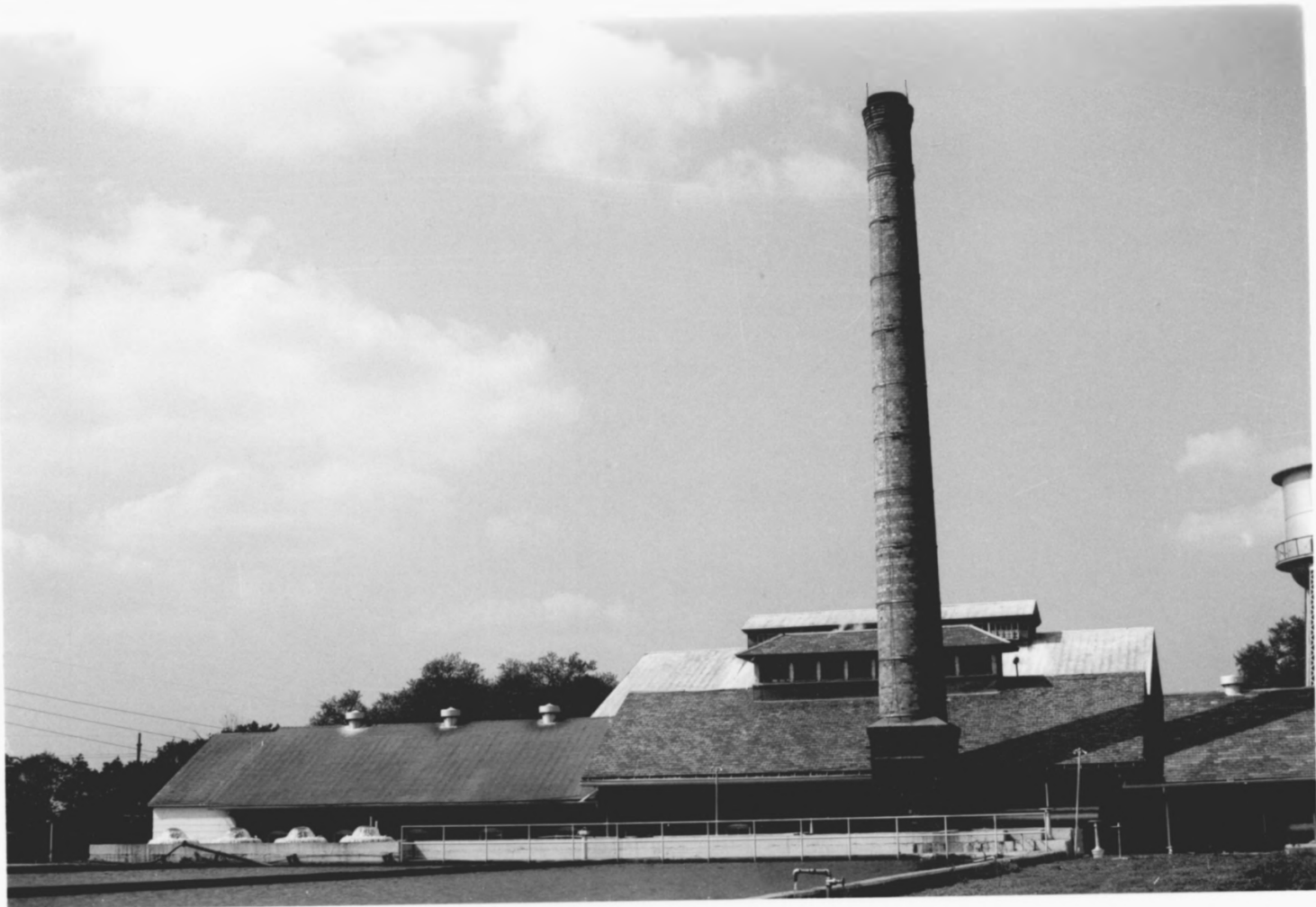
MAY 9 1980

DEC 11 1979

See map for view

Pictures by: Lauren Marchive

Historic Preservation of Shreveport
is location of negatives



South Elevation over looking settling basins and
a view of the 1901 Adolphus Custodis stack

#3 Shreveport Water Works Co., Pump
Station *La Caddo Parish*

On Cross Bayou off Common Street EX-
tension, Shreveport
summer of 1977

DEC 11 1979

See map for view

Pictures by: Lauren Marchive

Historic Preservation of Shreveport
is location of negatives

9

1980

MAY



Low-Service Pump building on Cross Bayou, built in 1911. (abandoned) A second pit was built after 1921 and is also abandoned.

#4/ Shreveport Water Works Co., Pump
Station

Caddo Parish

On Cross Bayou off Common Street Ex-
tension, Shreveport
Summer of 1977

DEC 11 1979

See map for view

Pictures by: Lauren Marchive

Historic Preservation of Shreveport
is location of negatives

MAY

9



Filter Room, 1892, looking into the NØ-1 High-Service Engine Room

#7/9 Shreveport Water Works Co., Pump
Station *To Caddo Parish*
On Cross Bayou off Common Street Ex-
tension, Shreveport
Summer of 1977

DEC 11 1979

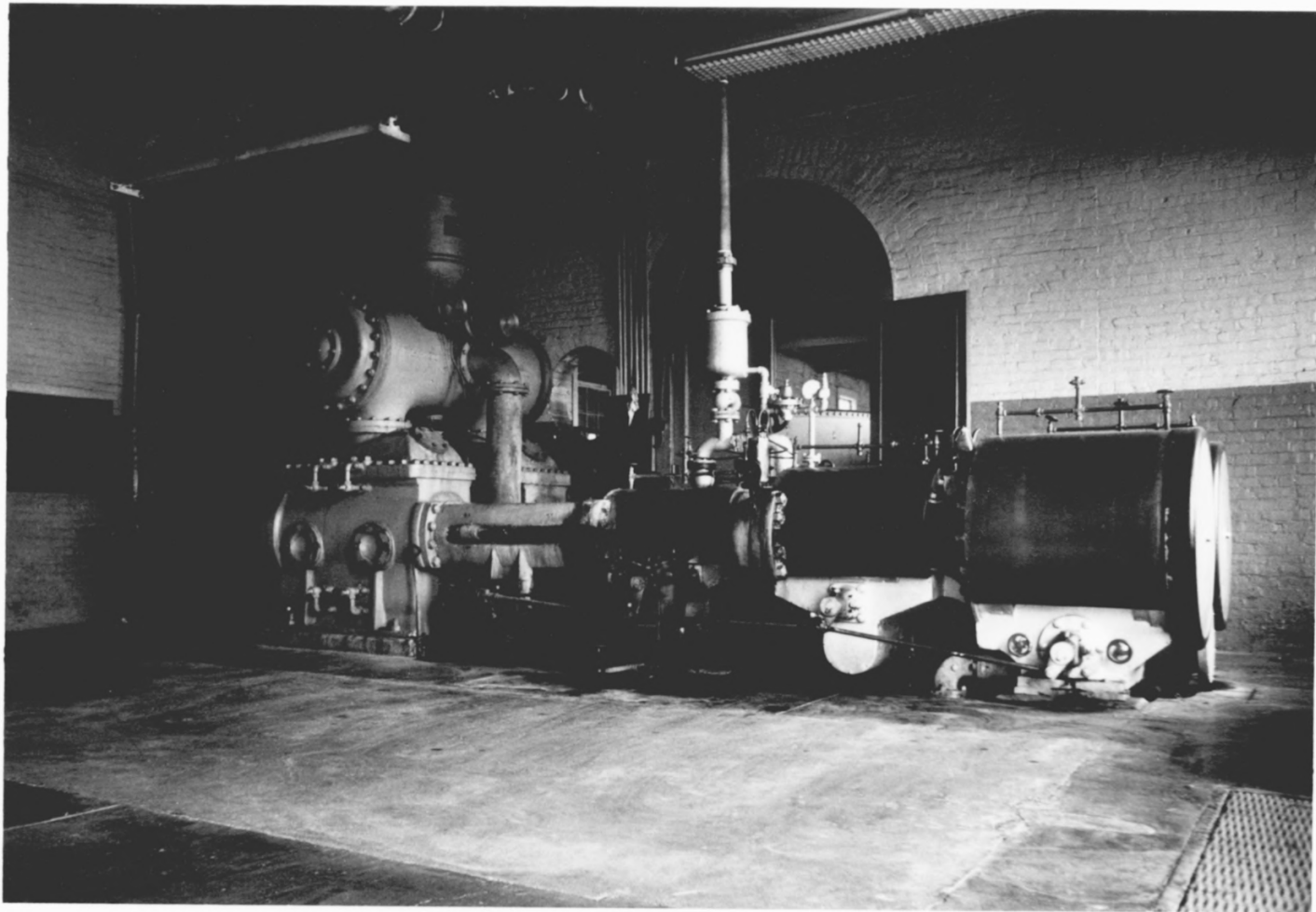
See map for view

Pictures by: Lauren Marchive

Historic Preservation of Shreveport
is location of negatives

9 1980

MAY



NΘ-1 High-Service Engine, installed in 1900

#8/9 Shreveport Water Works Co., Pump
Station

On Cross Bayou off Common Street Ex-
tension, Shreveport

Summer of 1977

DEC 11 1979

La Caddo Parish

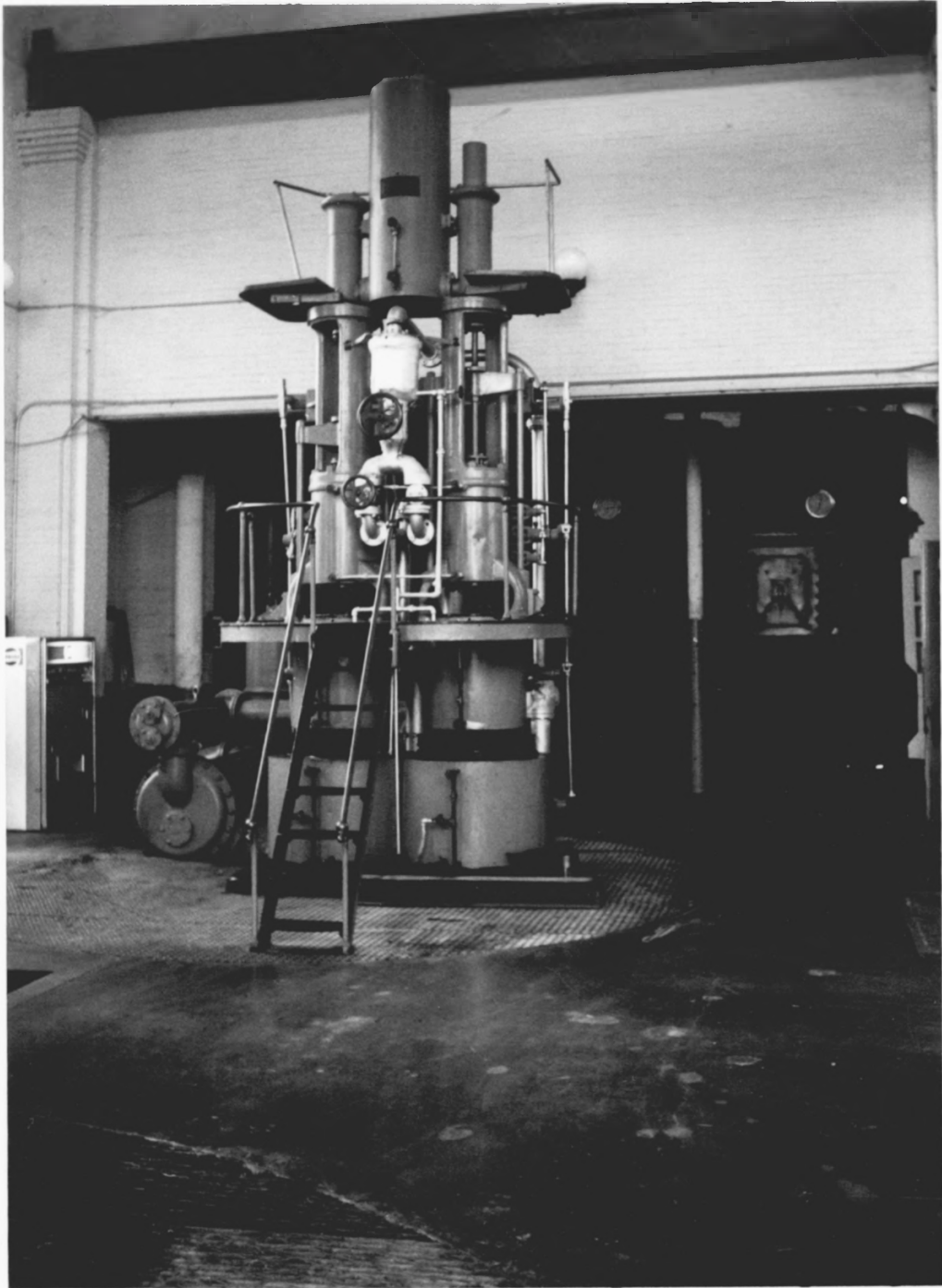
See map for view

Pictures by: Lauren Marchive

Historic Preservation of Shreveport
is location of negatives

0861
9

KWA



N0-1 Low-Service Engine, installed in 1898

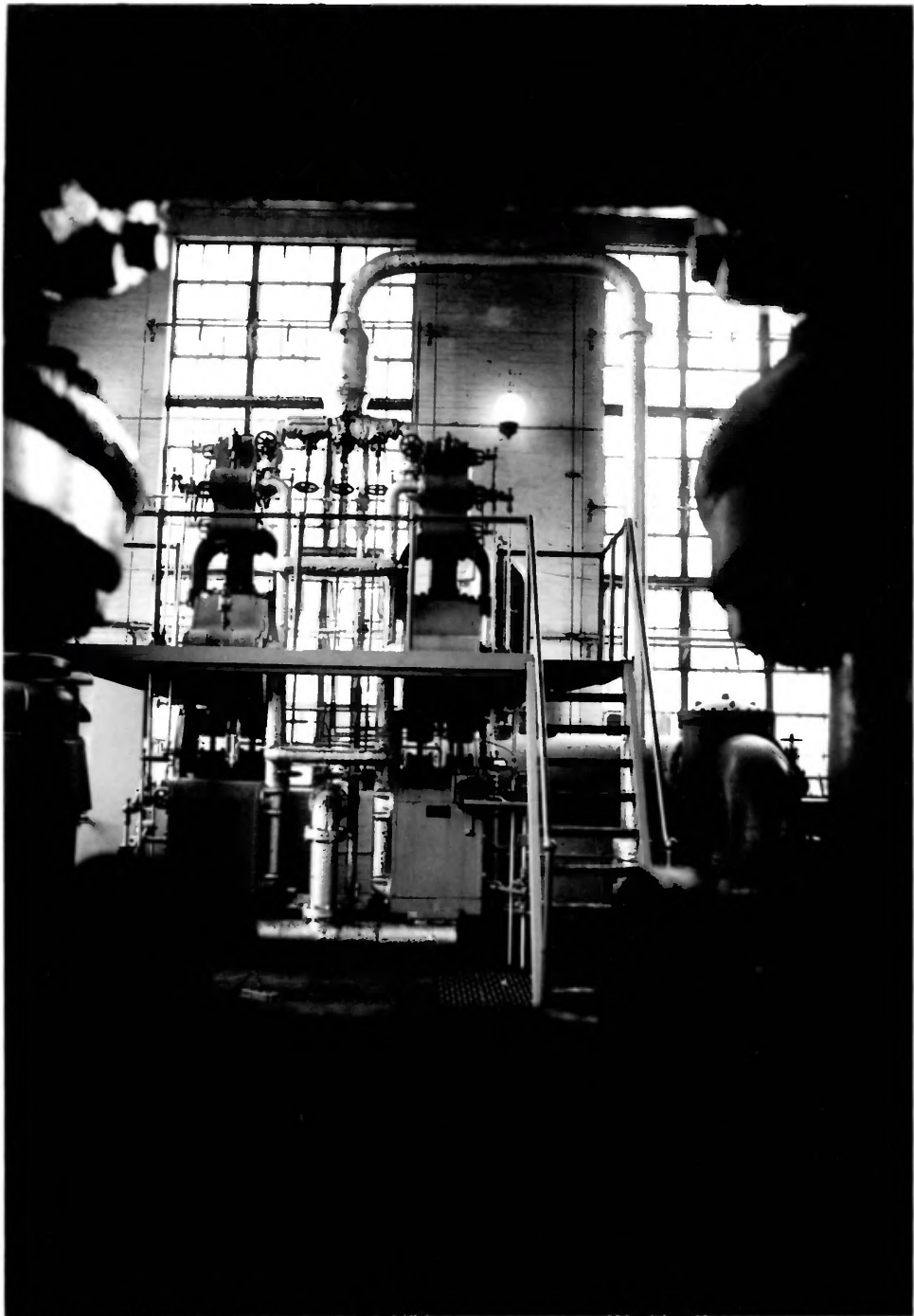
#9/ Shreveport Water Works Co., Pump
19 Station *L.A., Caddo Parish*
On Cross Bayou off Common Street Ex-
tension, Shreveport
Summer of 1977

DEC 11 1979

See map for view

Pictures by: Lauren Marchive

Historic Preservation of Shreveport
is location of negatives



No-3 Low-Service Engine, installed in 1921

9 1980

#6 / Shreveport Water Works Co., Pump
Station *La Parrotte Parish*
On Cross Bayou off Common Street Ex-
tension, Shreveport
Summer of 1977

MAY

DEC 11 1979

See map for view
Pictures by: Lauren Marchive
Historic Preservation of Shreveport
is location of negatives



No-3 &4 High-Service Engines, installed in 1921

#5/19 Shreveport Water Works Co., Pump
Station *La. Cade Parish*
On Cross Bayou off Common Street Ex-
tension, Shreveport
Summer of 1977

9
DEC 11 1979

See map for view

Pictures by: Lauren Marchive

Historic Preservation of Shreveport
is location of negatives