



HOBMAN
APARTS

Bowman Apts: NW 20th & Irving
7/4/37

Purchased by Walter
Gearin through Miss Frances
New so that he could
make a suite there, his
home. Sale, all cash,
involved a 3rd piece of
real estate.

THIS photoprint is issued for reference use
only. It is not to be copied for resale
Permission for use in a publication, film
or video production must be requested in
writing from the Photographs Librarian
Photographs Department
Oregon Historical Society
1230 SW Park Avenue
Portland, Oregon 97205

NEGATIVE NUMBER Or H: 84019
XC 1257

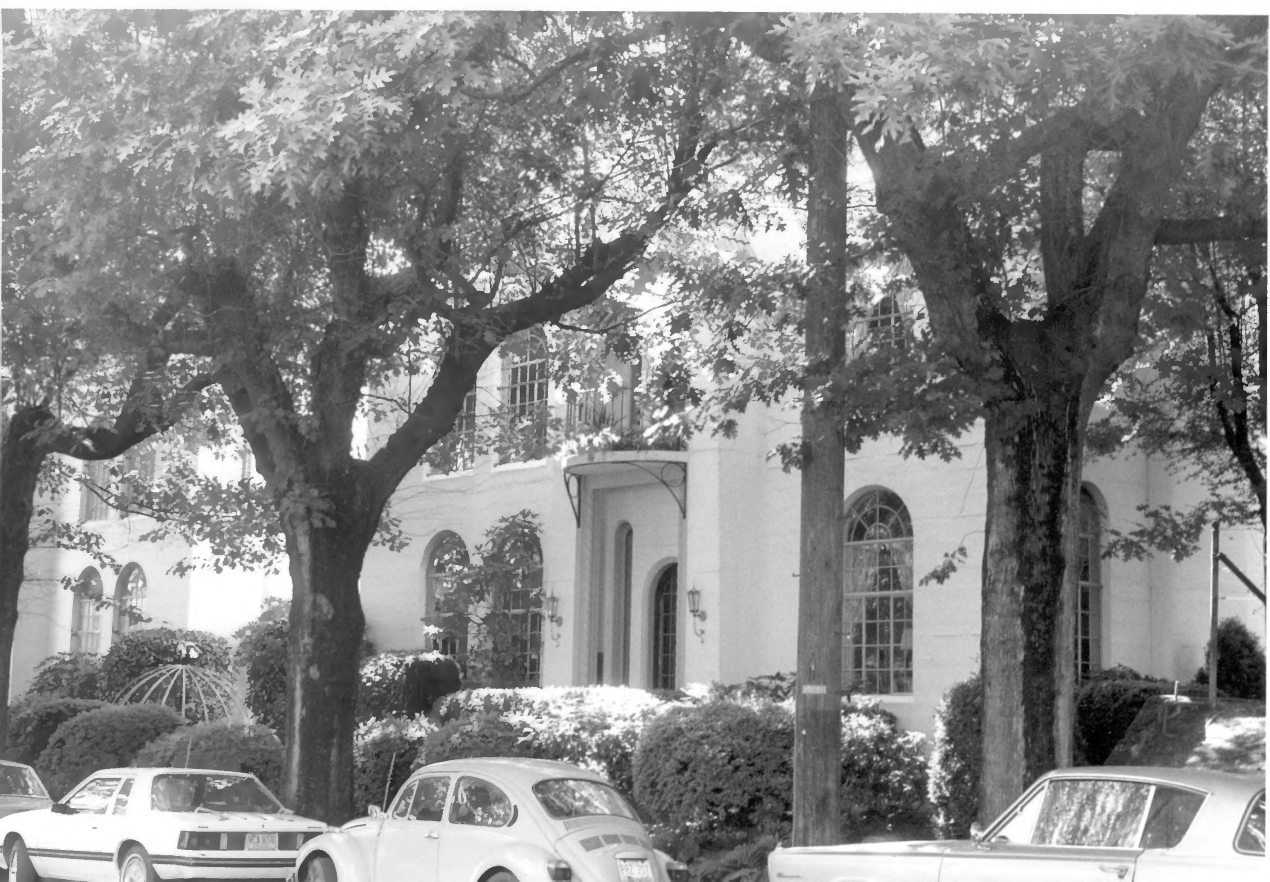
July 4, 1937

BOWMAN APARTMENTS (ALHAMBRA)
PORTLAND, MULTNOMAH CO., OR.
HISTORIC PHOTO
1937
OREGON HISTORICAL SOCIETY
NORTH ELEVATION



700
NW IRVING ST

THE BOWMAN APARTMENTS
PORTLAND, MULTNOMAH COUNTY, OREGON
P. SACKETT
JULY 1989
612 NW 20TH, PORTLAND
EAST WING - NORTH ELEVATION
2 OF 11



THE BOWMAN APARTMENTS

PORTLAND, MULTNOMAH COUNTY, OREGON

P. SACKETT

JULY 1989

612 NW 20th, PORTLAND

WEST WING - NORTH ELEVATION

3 OF 11



THE BOWMAN APARTMENTS
PORTLAND, MULTNOMAH COUNTY, OREGON
P. SACKETT

JULY 1989

612 NW 20TH, PORTLAND

VIEW FROM SOUTHEAST

9 OF 11



THE BOWMAN APARTMENTS
PORTLAND, MULTNOMAH COUNTY, OREGON

P. SACKETT

JULY 1989

612 NW 20TH, PORTLAND

EAST ELEVATION: COPPER CANOPY, DOOR TO "MANAGER'S APT."

5 OF 11



THE BOWMAN APARTMENTS

PORTLAND, MULTNOMAH COUNTY, OREGON

P. SACKETT

JULY 1989

612 NW 20TH, PORTLAND

DETAIL - CHIMNEY STACK, EAST WING, FACING WEST

6 OF 11



THE BOWMAN APARTMENTS

PORTLAND, MULTNOMAH COUNTY, OREGON

P. SACKETT

JULY 1989

612 NW 20TH, PORTLAND

LIGHT FIXTURE; ROPE MOTIF OF PRIMARY ENTRANCE

7 OF 11



THE BOWMAN APARTMENTS
PORTLAND, MULTNOMAH COUNTY, OREGON
P. SACKETT
JULY 1980
612 N.W. 20TH, PORTLAND
TILE FOUNTAIN; COURT FACING NORTH
8 OF 11



THE BOWMAN APARTMENTS
PORTLAND, MULTNOMAH COUNTY, OREGON

P. SACKETT

JULY 1989

612 NW 20TH, PORTLAND

DETAIL: BASE OF CHIMNEY STACK, EAST WING, FACING EAST

9 OF 11



THE BOWMAN APARTMENTS
PORTLAND, MULTNOMAH COUNTY, OREGON

P. SACKETT

JULY 1989

612 NW 20TH, PORTLAND

FIREPLACE

10 OF 11



THE BOWMAN APARTMENTS

PORTLAND, MULTNOMAH COUNTY, OREGON

P. SACKETT

JULY 1989

612 NW 20TH, PORTLAND

VIEW FROM LIVING ROOM TOWARD DINING ROOM AND

MASTER BEDROOM ABOVE

11 OF 11