



IDEAL STEAM LAUNDRY

F872-39

Ideal Steam Laundry, Fremont,
Nebraska. Built in 1894.

MAY 23 1978

Photograph #1 45
Ideal Steam Laundry
Fremont, Nebraska. ca. 1905
Nebraska State Historical Society
View to the southwest
F872-39

FEB 15 1978

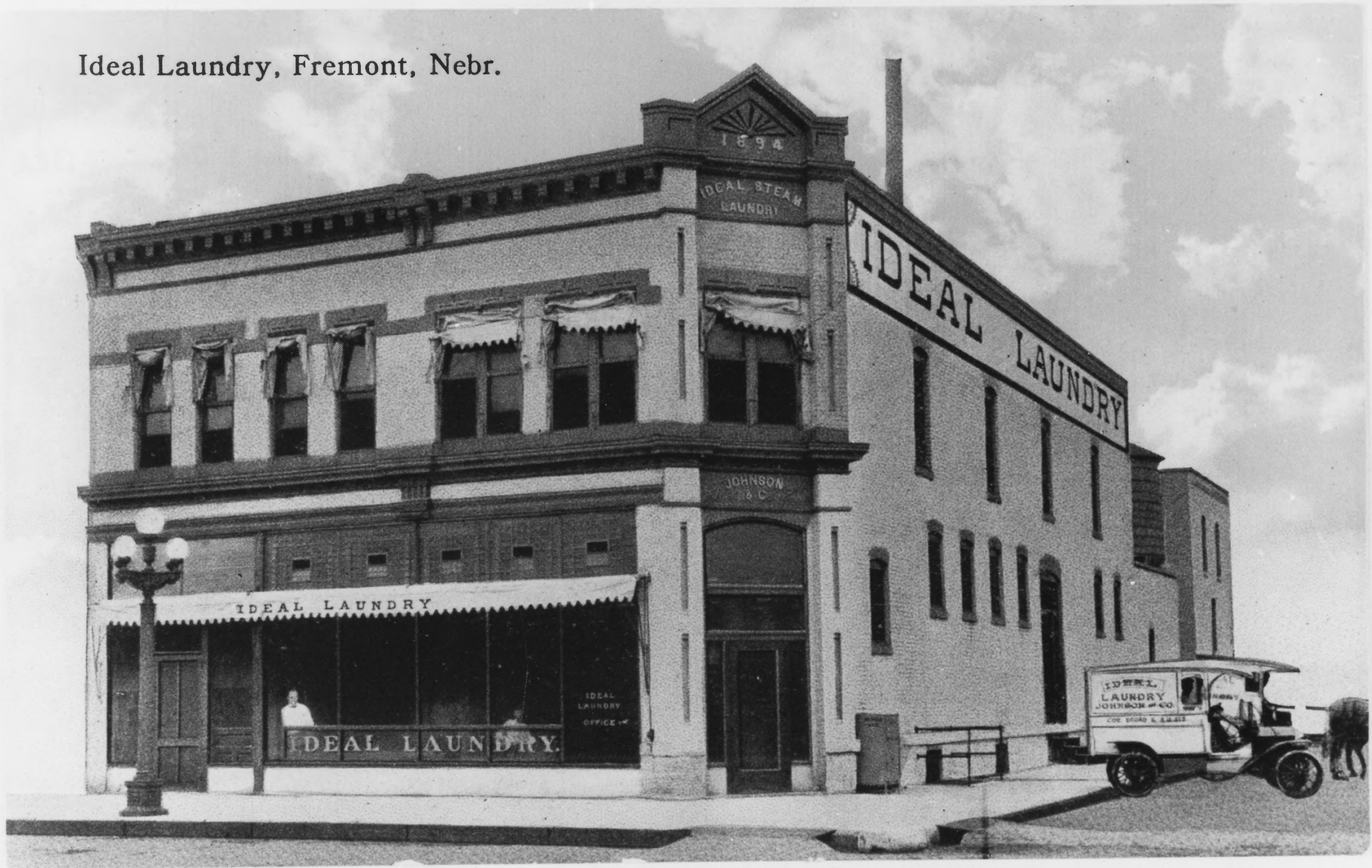
Dodge County

Osterman & Tremaine Bld.

PROPERTY OF THE NATIONAL REGISTER

Should this material be reproduced or
displayed credit must be given to the
Nebraska State Historical Society, Lincoln
ONE USE ONLY

Ideal Laundry, Fremont, Nebr.



F872-41
Ideal Laundry
Fremont, Nebraska

MAY 23 1978

Photograph #2 95
Ideal Steam Laundry
Fremont, Nebraska. ca. 1912
Nebraska State Historical Society
View to the southwest F872-41.

FEB 15 1978
Dodge County
Asterman & Tremine Bld

PROPERTY OF THE NATIONAL REGISTER

Should this material be reproduced or
displayed credit must be given to the
Nebraska State Historical Society, Lincoln,
ONE USE ONLY



CREAM
EGGS
POULTRY
DRIVE IN

1884

IDEAL STEAM
LAUNDRY

IDEAL LAUNDRY

JOHNSON
& Co.

JOHNSON
& Co.

NO WAY
TRAFFIC
AHEAD

5th ST

10/1:15
BD B4 ST
14-9

PROPERTY OF THE NATIONAL REGISTER

Osterman's Trenching Bldg

MAY 23 1978

Photograph #3 of 5
Ideal Steam Laundry
Fremont, Nebraska. October, 1977.
Penelope Chatfield. Nebraska
State Historical Society
View to the southwest 7710/1:15
FEB 15 1978
Dodge County



#4

10/1:19
123-45
B4
ST

PROPERTY OF THE NATIONAL REGISTER

Ostermon & Tremine Bld.

MAY 23 1978

Photograph #4 *g5 Dodge County*
Ideal Steam Laundry
Fremont, Nebraska. October, 1977.
Penelope Chatfield, Nebraska
State Historical Society
Fiew to the southeast 7710/1:19

FEB 15 1978



10/1: 14
113-15
R4
ST
BD

PROPERTY OF THE NATIONAL REGISTER

MAY 23 1978

*Ostroman & Tramine
Ch.*

Photograph #5 *45*
Ideal Steam Laundry
Fremont, Nebraska. October 1977.
Penelope Chatfield. Nebraska
State Historical Society.
View to the southwest 7710/1:14
FEB 15 1978