



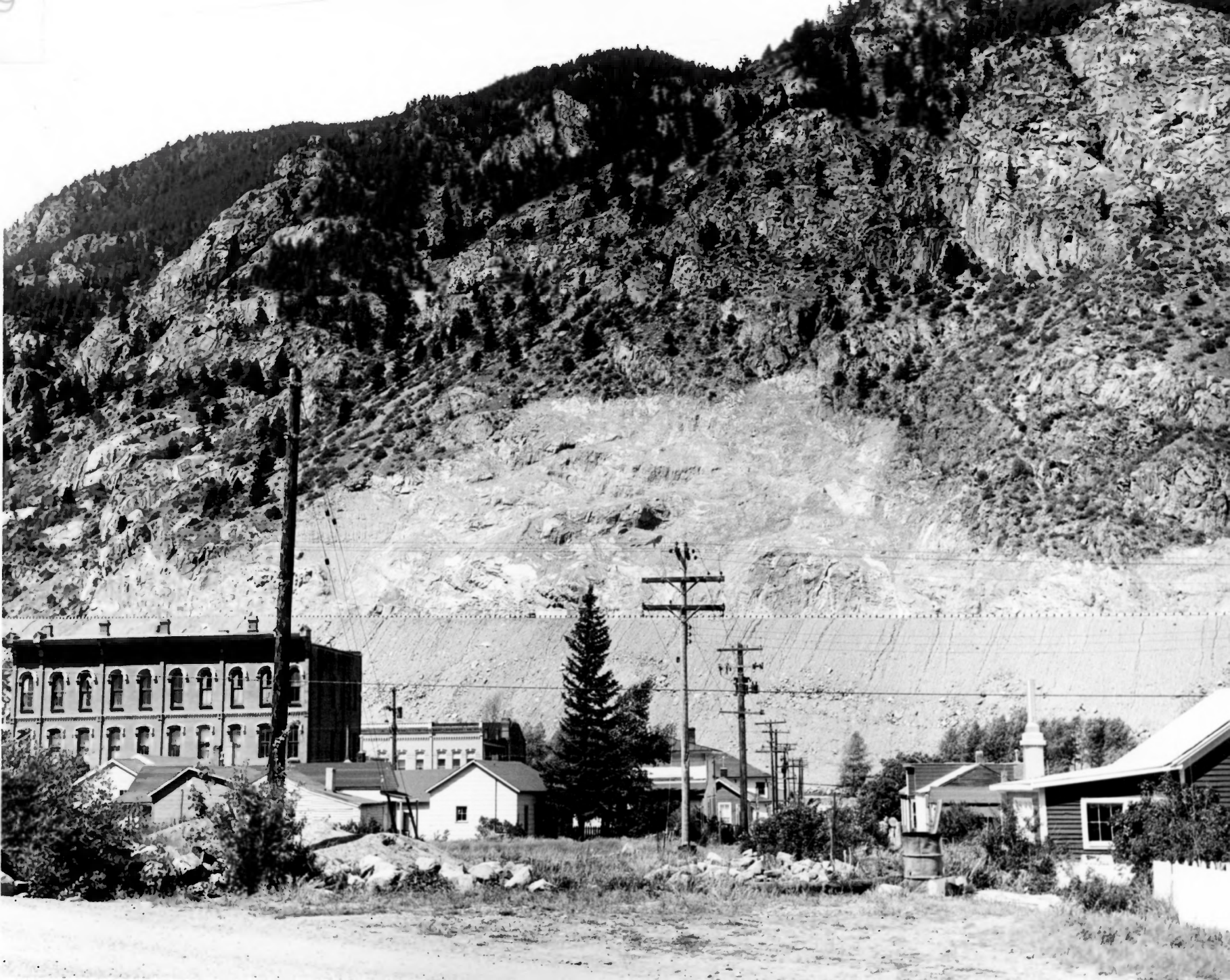
Near Georgetown, Colorado

Georgetown-Silver Plume Hist. Dist.,
Colo.



Georgetown-Silver Plume Hist. Dist.,
Colo.

Miss Josephine, Colorado



Georgetown-Silver Plume Hist. Distr.,

Georgetown, Pa., Jackson



Georgetown-Silver Plume Hist. Distr.,
Colorado

© David, Georgetown, Colorado, Spring N



Georgetown-Silver Plume Hist. Distr.,
Colorado

Georgetown Colorado,
Feb 1911



Georgetown-Silver Plume Hist. Distr.,
Colorado

Georgetown, CO, looking northward along 7th St.
showing scale of 115 ft line as accepted.

PIC LANDMARK



Georgetown-Silver Plume Hist. Distr.,
Colorado

Georgetown, CO,
Looking SW toward Silver Plume



Georgetown-Silver Plume Hist. Distr,
Colo.

Georgetown, Col.

Section SW



Georgetown-Silver Plume Hist. Distr.,
Colorado

Dear Georgetown, CO.



Georgetown-Silver Plume Hist. Distr.,
Colorado

July 1st 1892
Georgetown, Colorado

PK



Georgetown-Silver Plume Hist . Dist.,
Colo.

Georgetown, Colorado, Section 3



Georgetown-Silver Plume Hist. Distr.,
Colo.

Georgetown, Colorado, Looking N



Near Georgetown, Colorado

Georgetown-Silver Plume Hist. Dist.,
Colo.



Georgetown-Silver Plume Hist. Distr.,
Colo

Mrs Georgetown, Co.



Georgetown-Silver Plume Hist. Distr.,
Colo.

Alan Georgetown, Colorado



Georgetown-Silver Plume Hist. Distr.,
Colo.

Dear Zepherus, Colorado



Georgetown-Silver Plume Hist. Distr.,
Colo.

Zeigler, Ed, Showing route + approval
note of PSC 115 KV line route
accepted agreement



Georgetown-Silver Plume Hist. Distr.,
Colo.

Wm. Nelson Georgetown, Co.



Georgetown-Silver Plume Hist. Distr.,
Colorado

Near Georgetown, Colorado



Georgetown-Silver Plume Hist. Dist.,
Colo.

Georgetown, Colorado
Looking S



Georgetown-Silver Plume Hist. Distr.,
Colo.

Georgetown, Col.



DANGER
HIGH
VOLTAGE

Georgetown-Silver Plume Hist. Distr.,
Colorado

PSC Substation, False Building covering
substation equipment, Georgetown, Colorado



Photo #1 | Name: Georgetown-Silver Plume
Historic District

Hammil House

410: Hammil House, south & east
facades, looking northwest
facades looking NW

2 LOC: Georgetown (Clear Creek (ty.)), CO

3 photo ref: Joseph Scott Mencklinghall, S/S
Neg Filed at: HSS/NPS

#1



Photo #2

Hammil office buildings, looking
west

1N: Georgetown - Silver Plume Historic Dist
2Lα: Georgetown (Clear Creek City), CO

3 Photo Ref: Joseph S. Mendinghall, 5/75
Neg filed at: NPS/HSS


4 20: Hammil Office buildings,
looking W. #2



Photo # 3

Maxwell House, north elevation
looking south

1 N: Georgetown - Silver Plume HD

2 Loc:  Georgetown (Clear Creek city) CO

3 Photo REF: Joseph S Mendinghall, 5/75
Neg filed at: HSS, NPS

4 IO: Maxwell House, N elevation,
looking S #3



Photo # 4

Luedde House, east & north
facades, looking southwest

- 1 Name - Georgetown - Silver Plume HD
- 2 LOC - Georgetown (Clear Creek Cty), CO
- 3 Photo Ref: Joseph S. Mendinghall, S/3
neg loc at: HSS/NPS
- 4 ZD: Luedde House, E & N facades
looking SW

#4



Photo #5

Spencer House, north + west
elevations, looking southeast

1 N-Georgetown - Silver Plume HD



2 Loc-Georgetown CClean creek (ty)
CO

3 Photo REF: Joseph S. Meadchall, 5/75
neg loc: HSS, NPS

4 Z O - Spencer House, N & W elevations,
Looking SE

#5



Photo # 6

Bowman-White, south & east
facades, looking northwest

- 1 N-Georgetown-Silver Plume HD
- 2 LOC - Georgetown (Clear Creek Cty.) CO
- 3 Photo REF - Joseph S. Mendinghall, SITS
Neg LOC: NPS, HSS
- 4 ID: Bowman-White, S & E Facades,
Looking NW

#6



Photo # 7

Public School, north + east
facades, looking southwest

- 1 N - Georgetown - Silver Plume HO
- 2 LOC - Georgetown CC (Clear Creek City)
- 3 PHOTO REF - Joseph S. Mendinghall, ^{CO} SITS
Neg LOC - HSS/NPS
- 4 ID: Public School, NFE facades,
looking SW

(#7)



THE
HOTEL
DE PARIS

HOTEL DE PARIS

HOTEL DE PARIS

NO
PARKING
HERE TO
CONFORM

Photo # 8

The Hotel de Paris, north +
west facades, looking east

- 1 N Georgetown - Silver Plume HD
- 2 loc - Georgetown, (Clear creek city), CO
- 3 Photo REF - Joseph S. Mendinghall
neg loc - HSS, NBS 5/75
- 4 20 - The Hotel de Paris, N & W facades,
Looking E (#8)

CLEAR CREEK COUNTY
COURT HOUSE

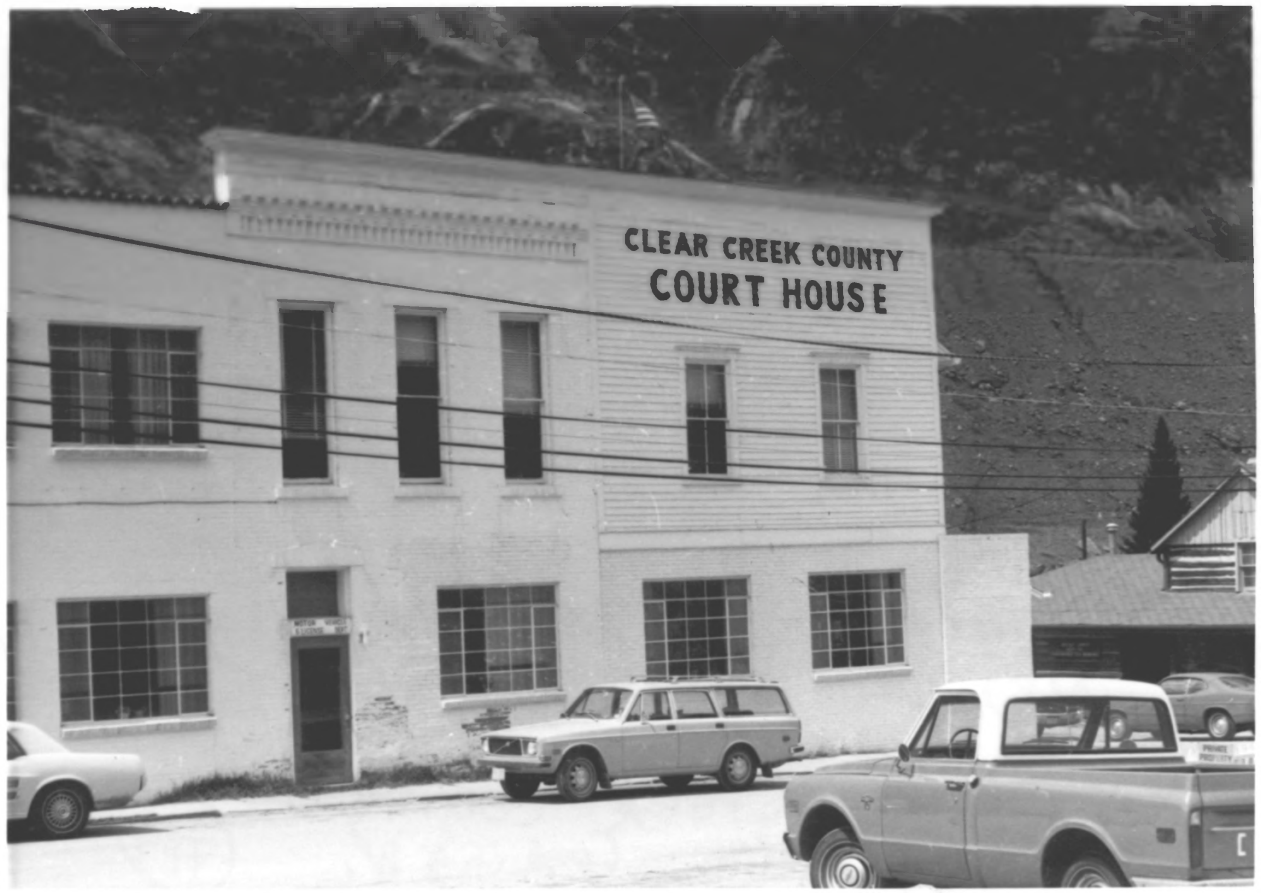


Photo #9

Clear Creek County Courthouse,
east elevations, looking west

1 N-Georgetown - Silver Plume HD

2 LOC - Georgetown — (Clear Creek Cty), CO

3 PHOTOREF - Joseph S. Mendinghall 5/75
neg loc - HSS/NPS


4 IO - Clear Creek Courthouse,
E elevation, looking W. (#9)



Photo # 10

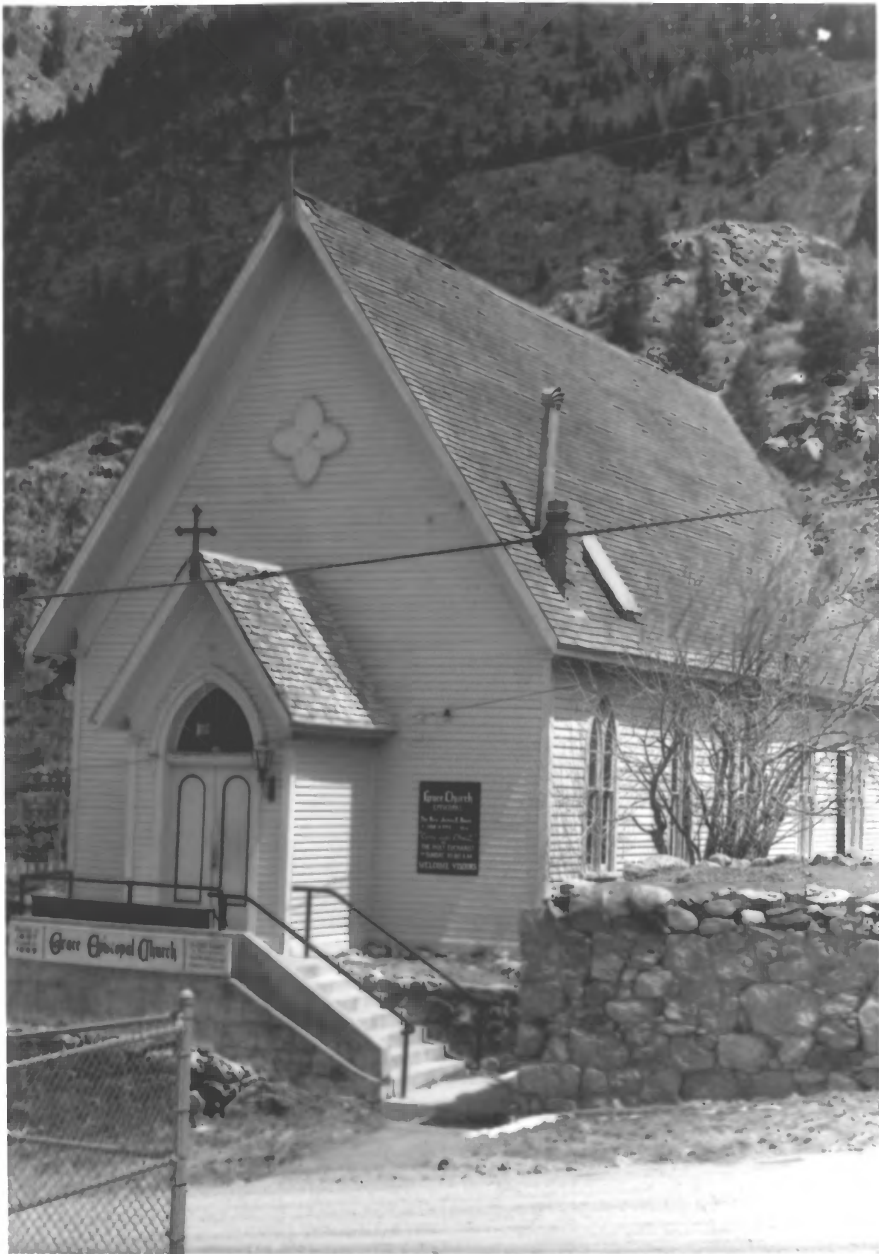
The old jail, east elevation,
looking west

1 N-Georgetown - Silver Plume Ho

2 Loc - Georgetown,  (Clear Creek City) CO

3 Photo REF - Joseph S. Mendinghall, Sr.
Neg Loc - HSS/NPS

4 2D - The old jail, E elevation, (#10)
looking w



Grace Church
1875
The Rev. John B. ...
The Rev. J. ...
The Rev. ...
The Rev. ...
The Rev. ...
The Rev. ...
The Rev. ...

Grace Episcopal Church

Photo # 11

Grace Episcopal Church,
south and west elevations,
looking northeast

1 N Georgetown - Silver Plume HO

2 Loc Georgetown Clear Creek (Twp.), CO

3 Photo REF - Joseph S. Mendonhall,
Ney Loc - HSS INPS
S/TS

4 ZO - Grace Episcopal Church
S & W elevations, looking NE #11



MUSEUM

Photo #12

The Old Silver Plume School
House, north elevation,
looking north

1 N Georgetown - Silver Plume Ho

2 Loc Georgetown, CO
Clear Creek (S)

3 Photo REF - Joseph S Menkinghall, S/S
Neg Loc: HSS/NPS

4 ID The Old Silver Plume School
House, N elevation, looking N #12



Photo #13

The Windsor Hotel, south +
east elevations looking
north

1 N-Georgetown-silver Plume HD

2 LOC-Georgetown, (Clear Creek Cty), CO

3 PHOTO REF - Joseph S. Mendinghall, SITS
neg loc: H55/NPS

4 ID - The Windsor Hotel, SSE elevations
looking N



Photo 14

Silver Plume Church, west &
south facades looking northeast

1^{N:} Georgetown-Silver Plume
H.D. [redacted]

2 loc: Georgetown (Clear Creek Ctr), CO

3 Photo Ref: Joseph S. Mendinghall, S/S
Neg loc: HSS/NPS

4 IO: Silver Plume Church,
W & S facades, looking NE

#14



Photo 15

The Old Jail, south + east
facades looking northwest

IN Georgetown - Silver Plume Hb

2 LOC Georgetown (Clear Creek City), CO

3 Photo REF - Joseph S. Mendinghall, S/TS
Neg LOC HSS, NPS

4 ID The Old Jail, S/E Facades
Looking NE #15

SILVER PLUME HOSE CO.
1886.



Photo 16

Silver Plume Hose Co.
north elevation looking
west

- 1 N Georgetown - Silver Plume Ho
- 2 Loc Georgetown, Clear Creek City, CO
- 3 Photo REF - Joseph S. Mendinghall, 5/75
Neg Loc HSSNPS
- 4 ID: Silver Plume Hose Co., N. Elevation,
Looking W. (#16)



SILVER PLUME

Photo 17

The Georgetown Loop Railroad
station at Silver Plume,
looking northeast

- 1 Georgetown-Silver Plume HO
- 2 loc Georgetown, Clear Creek (ty.), CO
- 3 Photo REF - Joseph S. Mendinghall, SITS
- 4 ID The Georgetown Loop
Railroad Station at
Silver Plume, looking NE

#17

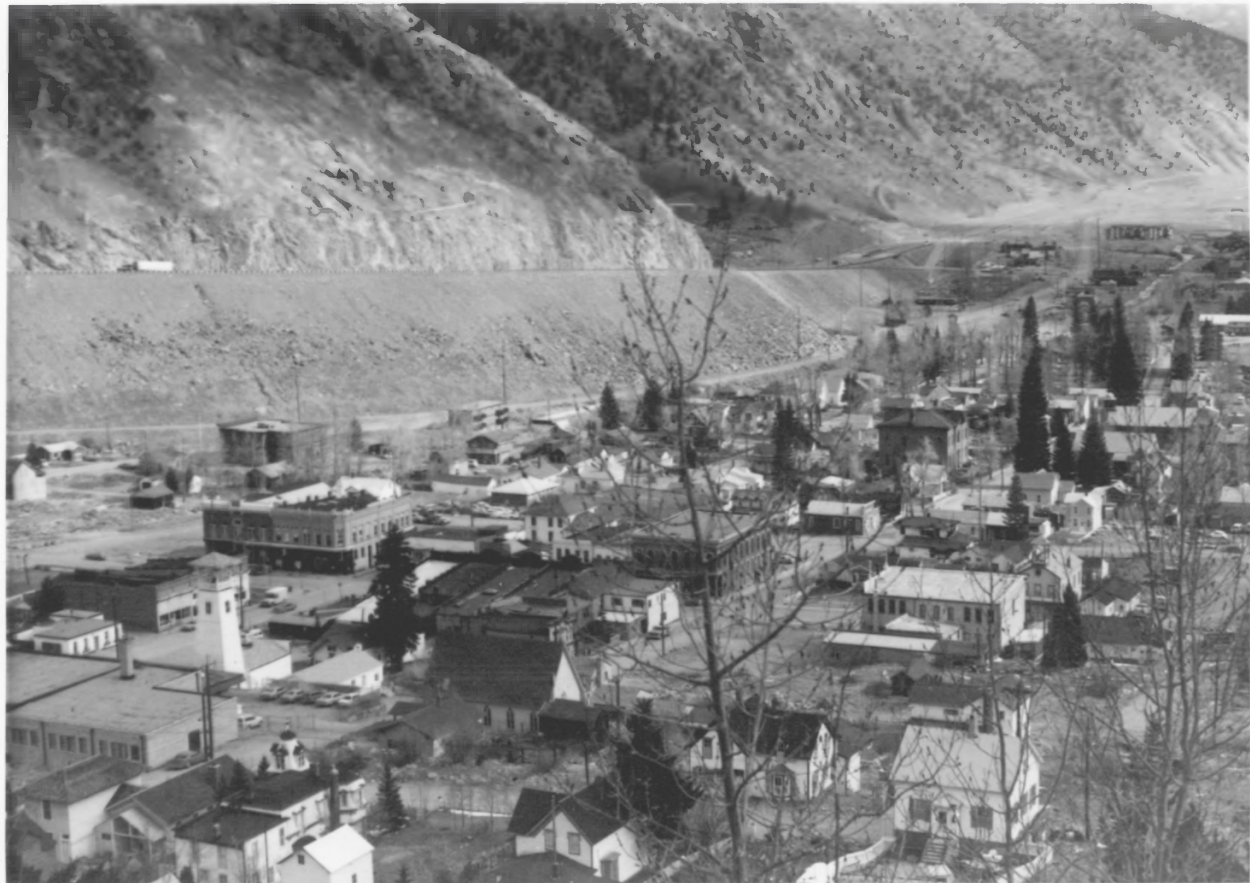



Photo #18

Aerial view of Georgetown,
looking northeast

1N Georgetown - silver plume HO


2 LOC Georgetown (Clear Creek City) CO

3 photo REF - Joseph S. Mendinghall, S/75
neg LOC: HSS / NPS

4 ID: Aerial view of Georgetown, #18
looking NE



Photo #19

View of Streets lined with
trees, photograph views
north

IN Georgetown-Silver Plume HO

2 loc Georgetown (Clear Creek Cty), CO

3 Photo REF Joseph S. Mendinghall, 5/75
NEG LOC: HSS/MS

4 2D View of street lined with trees #19
Photograph Views N.