

United States Department of the Interior  
National Park Service

National Register of Historic Places  
Registration Form

970  
JUN 23 1989

NATIONAL REGISTER

This form is for use in nominating or requesting determinations of eligibility for individual properties or districts. See instructions in *Guidelines for Completing National Register Forms* (National Register Bulletin 16). Complete each item by marking "x" in the appropriate box or by entering the requested information. If an item does not apply to the property being documented, enter "N/A" for "not applicable." For functions, styles, materials, and areas of significance, enter only the categories and subcategories listed in the instructions. For additional space use continuation sheets (Form 10-900a). Type all entries.

1. Name of Property

historic name Palmerin Hotel  
other names/site number Davis Islands Motor Hotel; Hudson Manor Hotel / 8 Hi 608

2. Location

street & number 115 East Davis Boulevard N/A  not for publication  
city, town Tampa N/A  vicinity  
state Florida code FL county Hillsborough code 057 zip code 33606

3. Classification

Ownership of Property	Category of Property	Number of Resources within Property	
		Contributing	Noncontributing
<input checked="" type="checkbox"/> private	<input checked="" type="checkbox"/> building(s)	<u>1</u>	<u>        </u> buildings
<input type="checkbox"/> public-local	<input type="checkbox"/> district	<u>        </u>	<u>        </u> sites
<input type="checkbox"/> public-State	<input type="checkbox"/> site	<u>        </u>	<u>        </u> structures
<input type="checkbox"/> public-Federal	<input type="checkbox"/> structure	<u>1</u>	<u>        </u> objects
	<input type="checkbox"/> object	<u>2</u>	<u>0</u> Total

Name of related multiple property listing: Mediterranean Revival Style Buildings of Davis Islands Number of contributing resources previously listed in the National Register 0

4. State/Federal Agency Certification

As the designated authority under the National Historic Preservation Act of 1966, as amended, I hereby certify that this  nomination  request for determination of eligibility meets the documentation standards for registering properties in the National Register of Historic Places and meets the procedural and professional requirements set forth in 36 CFR Part 60. In my opinion, the property  meets  does not meet the National Register criteria.  See continuation sheet.

*[Signature]* June 16, 1989  
Signature of certifying official Date  
State Historic Preservation Officer

State or Federal agency and bureau

In my opinion, the property  meets  does not meet the National Register criteria.  See continuation sheet.

\_\_\_\_\_  
Signature of commenting or other official Date

State or Federal agency and bureau

5. National Park Service Certification

I, hereby, certify that this property is:

entered in the National Register. Entered in the National Register 8/3/89  
 See continuation sheet.

determined eligible for the National Register.  See continuation sheet.

determined not eligible for the National Register.

removed from the National Register.

other, (explain:)

\_\_\_\_\_  
Signature of the Keeper

\_\_\_\_\_  
Date of Action

**6. Function or Use**

Historic Functions (enter categories from instructions)

Domestic/Hotel

Current Functions (enter categories from instructions)

Domestic/Hotel

**7. Description**

Architectural Classification  
(enter categories from instructions)

Mediterranean Revival

Materials (enter categories from instructions)

foundation Hollow Clay Tile

walls Hollow Clay Tile

Stucco

roof Terra Cotta

other Concrete: Loggia

Hollow Clay Tile: Tower

Describe present and historic physical appearance.

See Continuation Sheet

**8. Statement of Significance**

Certifying official has considered the significance of this property in relation to other properties:

nationally     statewide     locally

Applicable National Register Criteria     A     B     C     D

Criteria Considerations (Exceptions)     A     B     C     D     E     F     G

Areas of Significance (enter categories from instructions)

Architecture

Period of Significance

1925-1932

Significant Dates

1925

Cultural Affiliation

N/A

Significant Person

N/A

Architect/Builder

Hampton, Martin L.

State significance of property, and justify criteria, criteria considerations, and areas and periods of significance noted above.

See Continuation Sheet

See continuation sheet

**9. Major Bibliographical References**

City of Tampa. Division of Inspectional Services. Building Permyty Ledgers, 1925-1932.

Polk's Tampa City Directory. New York, R.L. Polk Publishing Co., 1925-1986.

Sanborn Insurance Maps of Tampa, Florida. New York, Sanborn Map Co., 1915-1931.

Continuation  
See next page

N/A  See continuation sheet

**Previous documentation on file (NPS):**

- preliminary determination of individual listing (36 CFR 67) has been requested
- previously listed in the National Register
- previously determined eligible by the National Register
- designated a National Historic Landmark
- recorded by Historic American Buildings Survey # \_\_\_\_\_
- recorded by Historic American Engineering Record # \_\_\_\_\_

**Primary location of additional data:**

- State historic preservation office
- Other State agency
- Federal agency
- Local government
- University
- Other

Specify repository: \_\_\_\_\_

**10. Geographical Data**

Acreage of property Less than one

**UTM References**

A 

1	7
---	---

3	5	6	7	4	0
---	---	---	---	---	---

3	0	9	0	0	6	0
---	---	---	---	---	---	---

  
Zone Easting Northing

C 

--	--	--	--	--	--	--	--	--	--

B 

--	--	--	--	--	--	--	--	--	--

--	--	--	--	--	--	--	--	--	--

--	--	--	--	--	--	--	--	--	--

  
Zone Easting Northing

D 

--	--	--	--	--	--	--	--	--	--

--	--	--	--	--	--	--	--	--	--

--	--	--	--	--	--	--	--	--	--

N/A  See continuation sheet

**Verbal Boundary Description**

Lots 1-4, Block 11, Bay Circle Section of Davis Islands

N/A  See continuation sheet

**Boundary Justification**

All of the historic elements of this property are confined to the above described boundaries.

N/A  See continuation sheet

**11. Form Prepared By**

name/title W. Carl Shiver, Historic Sites Specialist  
organization Bureau of Historic Preservation date June 16, 1989  
street & number 500 South Bronough Street telephone (904) 487-2333  
city or town Tallahassee state Florida zip code 32399-0250

United States Department of the Interior  
National Park ServiceNational Register of Historic Places  
Continuation SheetSection number 7 Page 1Description

The Mediterranean Revival style Palmerin Hotel is a picturesquely massed structure with two and three-story wings and an open four-story tower at its northeast corner clustered around a central tiled courtyard. The courtyard, with its concrete fountain, is screened from the street by a Venetian Gothic arcaded loggia. Constructed of stuccoed hollow tile, the building rests on a hollow tile foundation. Original clay barrel tiles cover the shallow-pitched hip roofs, which have very narrow, unarticulated eaves. A variety of ogee arch frontispieces and blind arches executed in cast concrete accent the fenestration on the south and west elevations. Approximately sixty percent of the wood double sash windows have been replaced with aluminum sash and awning windows.

When first opened in 1926, the small hotel had a lobby and dining room with hardwood floors and paneled cypress ceiling with a pickle finish. Square concrete columns of imitation marble supported the wood encased concrete beams of the ceiling. In the dining room, these columns were capped by four pairs of elaborate cast concrete scroll brackets. A reception cubicle in the lobby opposite the courtyard was partially glazed.

With the exception of the ceilings, all of these features were covered, encased, or blocked when the hotel changed hands and became a residential hotel. Public spaces were converted into a large cocktail lounge and a restaurant. The floors were covered with vinyl tile and carpet, and the columns and reception desk were encased in imitation paneling and dry wall. The twelve windows which once lighted the dining room in the south wing were blocked when the room was converted into a bar in the 1970s. This latter alteration also enclosed the south side of the courtyard and the arches of the arcade were filled in with concrete block and stucco. Fortunately, when the small restaurant was added in the north wing, the arcade was left untouched, but wood partitions extended into the courtyard.

Photographs

1. Palmerin Hotel, 115 E. Davis Blvd., Mediterranean Revival Style Buildings of Davis Islands
2. Tampa (Hillsborough County), Florida
3. Donna Hole
4. 1988
5. Historic Tampa/Hillsborough County Preservation Board
6. West Elevation, Looking Northeast
7. Photo No. 1 of 1

United States Department of the Interior  
National Park Service

National Register of Historic Places  
Continuation Sheet

Section number 8 Page 1

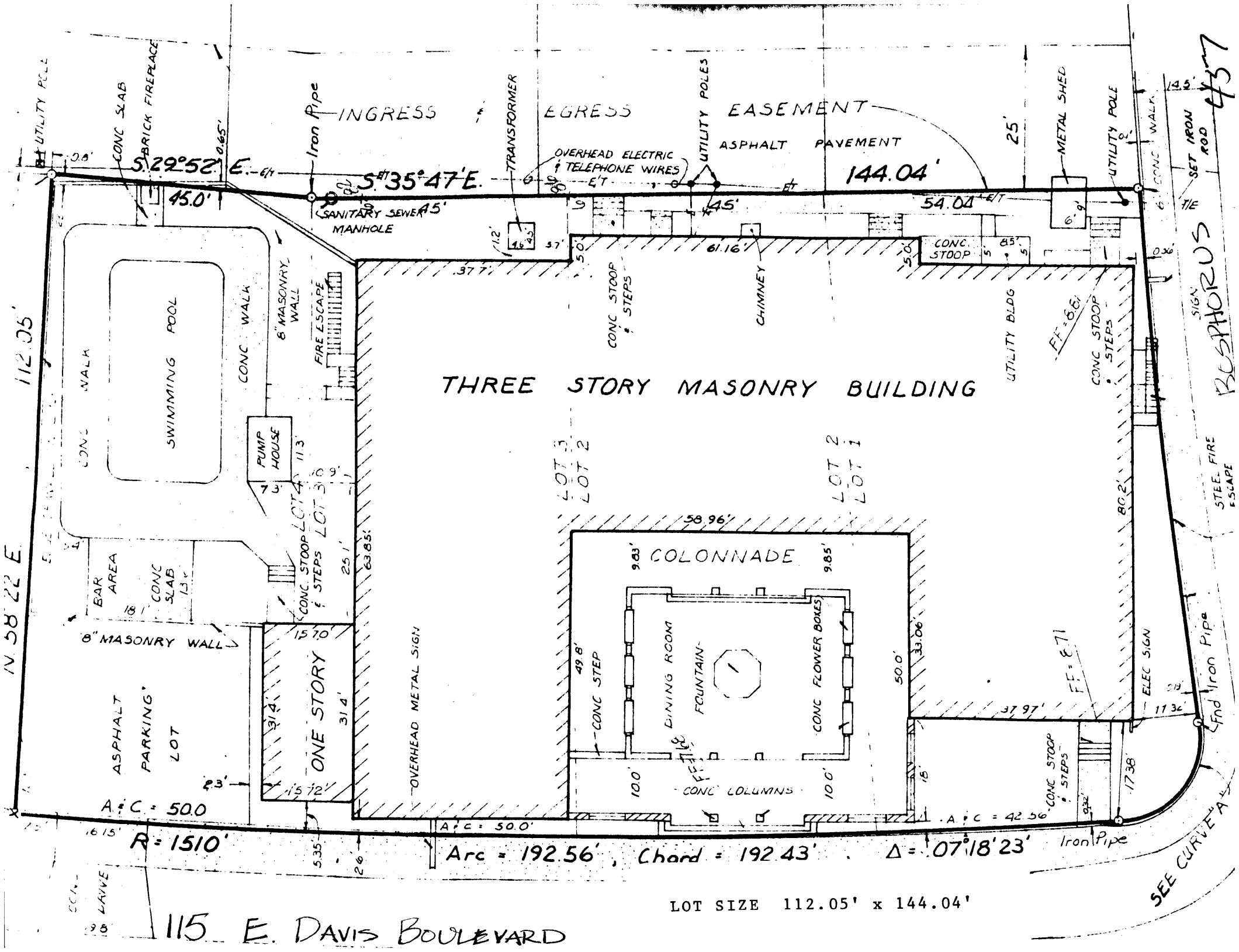
---

Statement of Significance

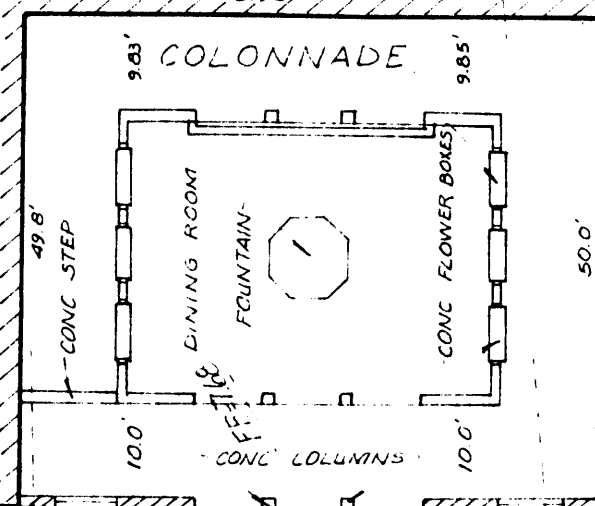
Like the Palace of Florence Apartments at 45 East Davis Boulevard, the Palmerin Hotel is significant as a picturesque and monumental expression of the Mediterranean Revival theme. It combines medieval and classical elements to produce a romantic vision of a grand scale Italian palazzo or public building. It derives its inspiration from the Doge's Palace in Venice and from the many cloistered monasteries of northern Italy. The picturesque combination of period details and features, such as the tower, link the building to both the Palace of Florence Apartments and the house at 36 Columbia Drive.

The Palmerin Hotel was designed by Miami architect Martin L. Hampton, who had been hired by developer D.P. Davis to oversee all construction on the islands. Davis was pleased with Hampton's designs for the first houses and apartment buildings, and Davis called on him again in 1925 to design a country club and two hotels on East Davis Boulevard. Construction on the \$175,000 hotel began soon after the building permit was issued in August, 1925, with Franklin O. Adams, Jr. as the supervising architect. The hotel opened in early 1926 under the control of the Davis Islands Hotel Management Company.

The hotel continued to be known as the Palmerin until 1940 when it became an annex of the nearby Mirsol Hotel. From 1950 to 1964 it was known as the Hudson Manor Hotel and in 1965 became the Davis Islands Motor Hotel. It was as the Davis Islands Hotel that the structure underwent major alterations and became neglected. It was sold in 1978 to its present owners, and in 1980 the restaurant was added to the north wing. The owners had the land use designation for the structure amended in 1986 and are in the process of restoring the structure.



THREE STORY MASONRY BUILDING



Arc = 192.56', Chord = 192.43', Δ = 07°18'23'

LOT SIZE 112.05' x 144.04'

115 E. DAVIS BOULEVARD

SEE CURVE 'A'

RES PHORUS 437

STEEL FIRE ESCAPE

N 58° 22' E 112.05'

CC 1-1-58 DRIVE

A+C = 500 R = 1510'

A+C = 42.56'