



Street Scene NE Corner Byron St. and Bradley St.
Lincoln Park Residential Historic District
Blue Earth Co., mn
011765-10

Street Scape NE Corner Byron St. and Bradley St.
#55 in Center
Lincoln Park Residential Historic District
Blue Earth Co., Mn
Photographer: Gemini Research
October 1993
Mn Historical Society, 345 Kellogg Blvd. W., St. Paul, Mn 55102-1906

011765-10



StreetScape Parsons St. 100 block, West Side
Lincoln Park Residential Historic District
Blue Earth Co., MN
011783-20

Street Scape Parsons St. 100 block, West Side, #163 on left 011783-20

Lincoln Park Residential Historic District

Blue Earth Co., MN

Photographer: Gemini Research

October 1993

MN Historical Society, 345 Kellogg Blvd. W., St. Paul, MN 55102-1906



Street Scape Record St., 500 block, east side
Lincoln Park Residential Historic District
Blue Earth Co., MN
011778-21

Street Scape Record St, 500 block, east side,
215 on right

011778-21

Lincoln Park Residential Historic District

Blue Earth Co., mn

Photographer: Gemini Research

October 1993

mn Historical Society, 345 Kellogg Blvd. W., St. Paul, mn 55102-1906



Street Scape Byron St. 400 block, east side
Lincoln Park Residential Historic District
Blue Earth Co., Mn
011764-19

Street Scape Byron St. 400 Block, eastside,
#52 (house w/ storefront) in center
Lincoln Park Residential Historic District
Blue Earth Co., mn

011764-19

Photographer: Gemini Research
October 1993

mn Historical Society, 345 Kellogg Blvd. W., St. Paul, mn 55102-1906



Street scene Pleasant St. E. 100 block, south side
Lincoln Park Residential Historic District
Blue Earth Co., MN
011763-02

Street Scape Pleasant St. E 100 Block, South Side
#181 on far Left

011763-22

Lincoln Park Residential Historic District

Blue Earth Co., MN
Photographer: ^{bemini} Research
October 1993

MN Historical Society, 345 Kellogg Blvd. W., St. Paul, MN 55102-
1906



Street Scape Ramsey St. 300 block, south side
Lincoln Park Residential Historic District
Blue Earth Co., MN
011783-24

Street Scape Ramsey St. 300 block, South Side 011783-24

#199 on far right

Lincoln Park Residential Historic District

Blue Earth Co., MN
Photographer: ^{Benini} Research
October 1993

MN Historical Society, 345 Kellogg Blvd. W., St. Paul, MN 55102-1906



Street Scape Lincoln St. 200 Block, Lincoln Park
Lincoln Park Residential Historic District
Blue Earth Co., mn
011773-3

Street Scapes Lincoln St. 200 block, Lincoln Park

011773-3

#144 in center

Lincoln Park Residential Historic District

Blue Earth Co., Mn

Photographer: Gemini Research

October 1993

Mn Historical Society, 345 Kellogg Blvd. W., St. Paul, Mn 55102-1906



Street Scape Pleasant St. E 100 Block, South Side
Lincoln Park Residential Historic District
Blue Earth Co., MN
011763-15

Street Scape Pleasant St. East 100 block, South Side
#170 on far right
Lincoln Park Residential Historic District
Blue Earth Co., mn
Photographer: Gemini Research
October 1993
mn Historical Society, 345 Kellogg Blvd. W., St. Paul, mn 55102-1906

011763-15



Streetscape Lincoln St. 200 block, north side
Lincoln Park Residential Historic District
Blue Earth Co., MN
011785-4

Street Scape Lincoln St. 200 block, north side

011785-4

#148 on far right

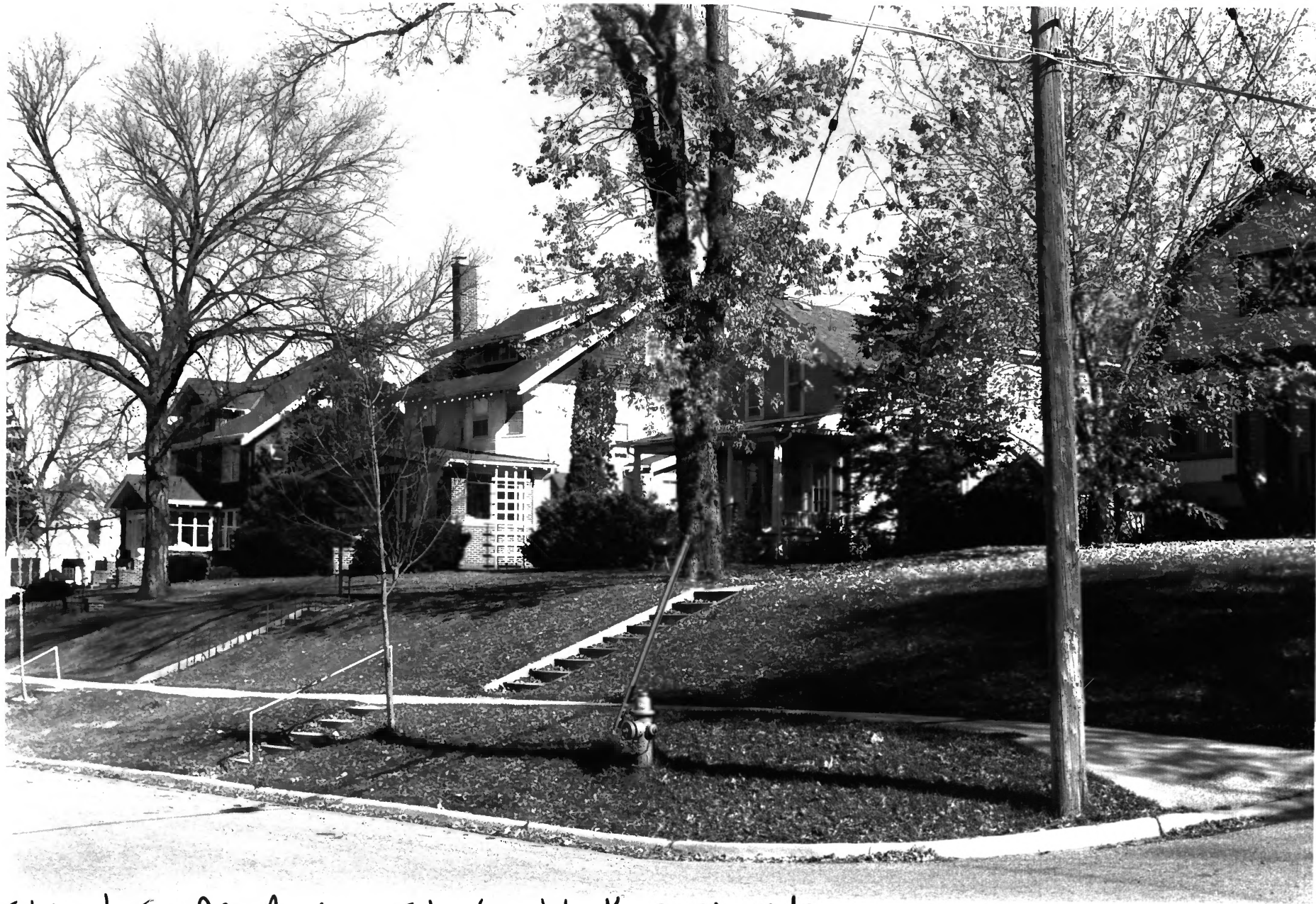
Lincoln Park Residential Historic District

Blue Earth Co., mn

Photographer: Gemini Research

October 1993

mn Historical Society, 345 Kellogg Blvd. W., St. Paul, mn 55102-1906



Street Scape Byron St. 600 block, east side
Lincoln Park Residential Historic District
Blue Earth Co., Mn
011789-10

Street Scape Byron St. 600 block, east side,
#71 on far left

011789-10

Lincoln Park Residential Historic District

Blue Earth Co., mn

Photographer: Gemini Research

October 1993

Mn Historical Society, 345 Kellogg Blvd. W., St. Paul, mn 55102-1906



House, #3
Lincoln Park Residential Historic District
Blue Earth Co., Mn
011791-20

House
709 2nd. St. S.

011791 - 20

Lincoln Park Residential / Historic District

Blue Earth Co., Mn

Photographer: Gemini Research

October 1993

Mn Historical Society, 345 Kellogg Blvd. W., St. Paul, Mn 55102-1106

Looking NE

#3



HUNT HOUSE #8
Lincoln Park Residential Historic District
Blue Earth Co., MN
011766-6A

HUNT HOUSE

011766-6A

811 2nd St. S.

Lincoln Park Residential Historic District

Blue Earth Co., MN

Photographer: Gemini Research

October 1993

MN Historical Society, 345 Kellogg Blvd. W., St. Paul, MN 55102-1906

Looking East

#9



THE NEWBERY #9
Lincoln Park Residential Historic District
Blue Earth Co., MN
011771-23a

THE NEWBERRY

011771-23a

817 2nd St. S.

Lincoln Park Residential Historic District

Blue Earth Co., MN

Photographer: Gemini Research

October 1993

MN Historical Society, 345 Kellogg Blvd. W., St. Paul, MN 55102-1906

Looking NE

#10



THE NEWBERRY #9
Lincoln Park Residential Historic District
Blue Earth Co., MN
011766-2a

THE NEWBERRY

011766-2a

817 2nd St. S.

Lincoln Park Residential Historic District

Blue Earth Co., MN

Photographer: Gemini Research

October 1993

MN Historical Society, 345 Kellogg Blvd. W., St. Paul, MN 55102-1906

Looking East

10



House, # 20 (non-contributing)
Lincoln Park Residential Historic District
Blue Earth Co., MN
011770-4

House (non-contributing)

011770-4

121 Bradley St.

Lincoln Park Residential Historic District

Blue Earth Co., MN

Photographer: Gemini Research

October 1993

MN Historical Society, 345 Kellogg Blvd. W., St. Paul, MN 55102-1906

Looking South

#20



House #23
Lincoln Park Residential Historic District
Blue Earth Co., MN
01774-20

House

011774-20

130 Bradley St.

Lincoln Park Residential Historic District

Blue Earth Co., MN

Photographer: Gemini Research

October 1993

MN Historical Society, 345 Kellogg Blvd. W., St. Paul, MN 55102-1906

Looking NW

#23



House, #24
Lincoln Park Residential Historic District
Blue Earth Co., MN
011775-22

House

215 Bradley St.

011775-22

Lincoln Park Residential Historic District

Blue Earth Co., MN

Photographer: Gemini Research

October 1993

MN Historical Society, 345 Kellogg Blvd. W., St. Paul, MN 55102-1906

Looking SE

#24



Currier/Butler House, # 36
Lincoln Park Residential Historic District
Blue Earth Co., MN
011792-15

Currier/Butler House

704 Broad St. S.

Lincoln Park Residential Historic District

Blue Earth Co., MN

Photographer: Gemini Research

October 1993

MN Historical Society, 345 Kellogg Blvd. W., St. Paul, MN 55102-1906

Looking NW

36

011792-15



Rose House # 45
Lincoln Park Residential Historic District
Blue Earth Co., MN
011773-45

Rose House

011773-15

810 Broad St. S.
Lincoln Park Residential Historic District

Blue Earth Co., MN

Photographer: Gemini Research

October 1993

MN Historical Society, 345 Kellogg Blvd. W., St. Paul, MN 55102-1906

Looking West

#45 ✓



Boardman/Hauge House, # 51
Lincoln Park Residential Historic District
Blue Earth Co., MN
011764-18

Boardman/Hauge House

011764-18

415 Byron St.

Lincoln Park Residential Historic District

Blue Earth Co., MN

Photographer: Gemini Research

October 1993

MN Historical Society, 345 Kellogg Blvd. W, St. Paul, MN 55102-1906

Looking NE

#51



House, #55
Lincoln Park Residential Historic District
Blue Earth Co., MN
011764-14

House
429 Byron St.
Lincoln Park Residential Historic District
Blue Earth Co., MN
Photographer: Gemini Research
October 1993
MN Historical Society, 345 Kellogg Blvd. W., St. Paul, MN 55102-1906
Looking NE
#55

011764-14



Wiecking House, #57 (CARRIAGE HOUSE)
Lincoln Park Residential Historic District
Blue Earth Co., MN
011764-11

Wiecking House (CARRIAGE HOUSE)

011764-11

506 Byron St.
Lincoln Park Residential Historic District
Blue Earth Co., MN

Photographer: Gemini Research

October 1993

MN Historical Society, 345 Kellogg Blvd. W., St. Paul, MN 55102-1906

Looking South

#57



Meyer House #64
Lincoln Park Residential Historic District
Blue Earth Co., MN
011765-4

Meyer House

011765-4

524 Byron St.

Lincoln Park Residential Historic District

Blue Earth Co., MN

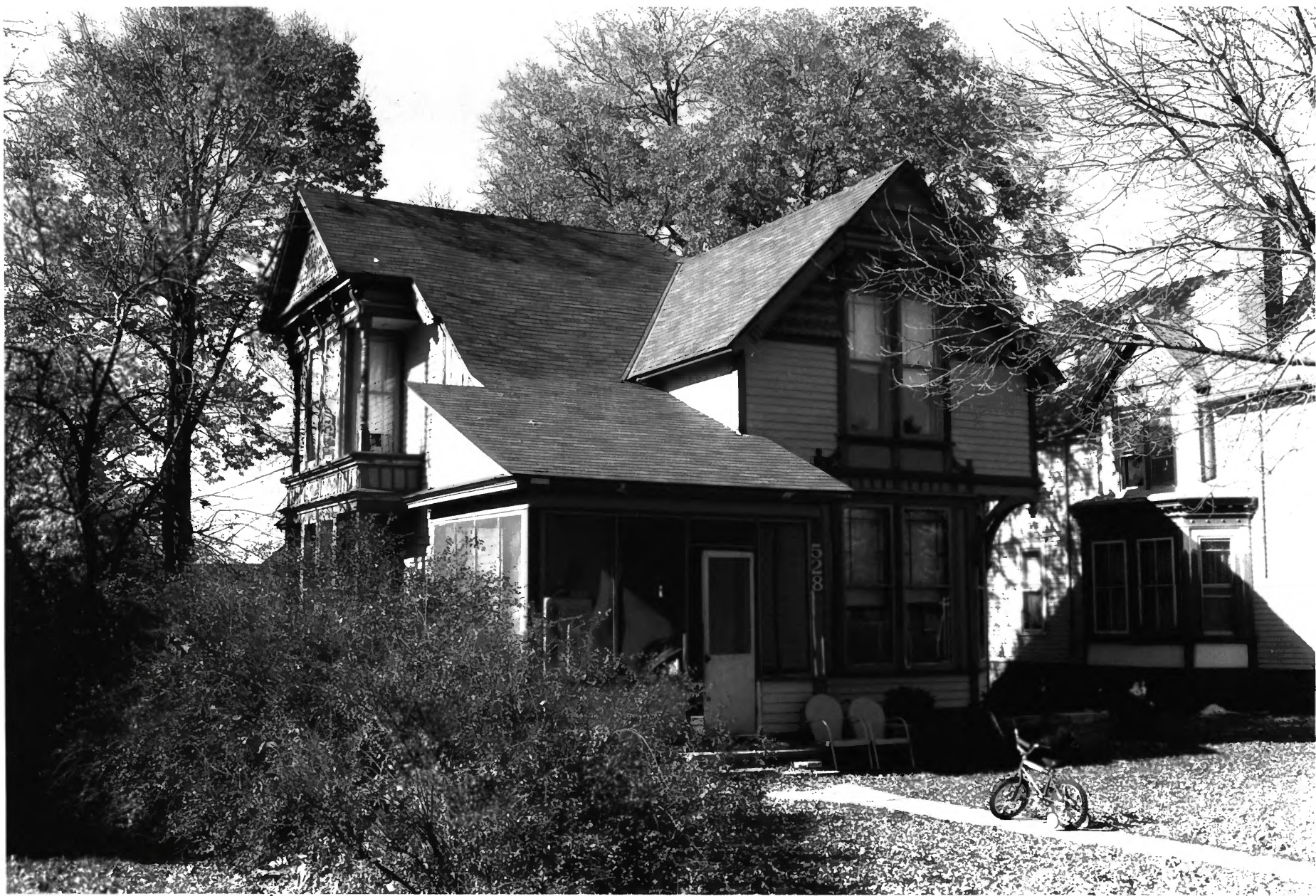
Photographer: Gemini Research

October 1993

MN Historical Society, 345 Kellogg Blvd. W., St. Paul, MN 55102-1906

Looking West

#64



Wood House #67
Lincoln Park Residential Historic District
Blue Earth Co., MN
011761-24

Woodhouse

011761-24

528 Byron St.

Lincoln Park Residential Historic District

Blue Earth Co., MN

Photographer: Gemini Research

October 1993

MN Historical Society, 345 Kellogg Blvd. W., St. Paul, MN 55102-1906

Looking NW

#67



Swan House, #68
Lincoln Park Residential Historic District
Blue Earth Co., MN
011761-23

Swan House
534 Byron St.

011761-23

Lincoln Park Residential Historic District

Blue Earth Co., MN

Photographer: Gemini Research

October 1993

MN Historical Society, 345 Kellogg Blvd. W., St. Paul, MN 55102-1906

Looking West

#68



Harmer House #71
Lincoln Park Residential Historic District
Blue Earth Co., MN
01161-9

Harmer House

011761-9

603 Byron St.

Lincoln Park Residential Historic District

Blue Earth Co., MN

Photographer: Gemini Research

October 1993

MN Historical Society, 345 Kellogg Blvd. W., St. Paul, MN 55102-1906

Looking NE

71



Footh House #75
Lincoln Park Residential Historic District
Blue Earth County, MN
011761-13

Footh House
615 Byron St.

011761-13

Lincoln Park Residential Historic District

Blue Earth Co., MN

Photographer: Gemini Research

October 1993

MN Historical Society, 345 Kellogg Blvd. W., St. Paul, MN 55102-1906

Looking NE

#75



Brandrup House, # 80
Lincoln Park Residential Historic District
Blue Earth Co., MN
011789-3

Brandrup House

011789-3

704 Byron St.

Lincoln Park Residential Historic District

Blue Earth Co., MN

Photographer: Gemini Research

October 1993

MN Historical Society, 345 Kellogg Blvd. W, St. Paul, MN 55102-1906

Looking SW

#80



Laurisch House, #82
Lincoln Park Residential Historic District
Blue Earth Co., MN
011777-16

Laurisch House

011777-16

112 Center St.

Lincoln Park Residential Historic District

Blue Earth Co., MN

Photographer: Gemini Research

October 1993

MN Historical Society, 345 Kellogg Blvd. W., St. Paul, MN 55102-1906

Looking SW

82



Noe House, #85
Lincoln Park Residential Historic District
Blue Earth Co., MN
011777-19

Noe House

011777-19

120 Center St.

Lincoln Park Residential Historic District

Blue Earth Co., MN

Photographer: Gemini Research

October 1993

MN Historical Society, 345 Kellogg Blvd. W., St Paul, MN 55102-1906

Looking NW

#85



House #114 (Limestone Retaining Wall)
Lincoln Park Residential Historic District
Blue Earth Co., MN
01769-19A

House (LIMESTONE Retaining WALL)

011769-19A

216 Grove St.

Lincoln Park Residential Historic District

Blue Earth Co., MN

Photographer: Gemini Research

October 1993

MN Historical Society, 345 Kellogg Blvd. W., St. Paul, MN 55102-1906

Looking NE

#114



House, #115 (non-Contributing)
Lincoln Park Residential Historic District
Blue Earth Co., MN
011769-21A

House (non-contributing)

011769-21A

220 Grove St.

Lincoln Park Residential Historic District

Blue Earth Co., MN

Photographer: Gemini Research

October 1993

MN Historical Society, 345 Kellogg Blvd. W., St. Paul, MN 55102-1906

Looking NE

#115



Creedon House, #117
Lincoln Park Residential Historic District
Blue Earth Co., MN
011776-2

Creedon House
116 Lewis St. E.

011776 - 2

Lincoln Park Residential Historic District

Blue Earth Co., MN

Photographer: Gemini Research

October 1993

MN Historical Society, 345 Kellogg Blvd. W., St. Paul, MN 55102-1906

Looking NE

117



House, #120
Lincoln Park Residential Historic District
Blue Earth Co., MN
011765-21

House
116 Lewis St. W.
Lincoln Park Residential Historic District
Blue Earth Co., MN
Photographer: Gemini Research
October 1993
MN Historical Society, 345 Kellogg Blvd. W., St. Paul, MN 55102-1906
Looking NE
#120

011765-21



House, #123
Lincoln Park Residential Historic District
Blue Earth Co., MN
011778-6

House

011778-6

129 Lewis St. W.

Lincoln Park Residential Historic District

Blue Earth Co., MN

Photographer: Gemini Research

October 1993

MN Historical Society, 345 Kellogg Blvd. W., St. Paul, MN 55102-1906

Looking SE

#123



O' MALEE PLACE
Lincoln Park Residential Historic District
Blue Earth Co., MN
011766 - 9A

011766-9A

O' MALEE PLACE
211 LIBERTY ST. E.

Lincoln Park Residential Historic District

Blue Earth Co., MN

Photographer: Gemini Research

October 1993

MN Historical Society, 345 Kellogg Blvd. W., St. Paul, MN 55102-1906

Looking East

#8



Gendler House, #128
Lincoln Park Residential Historic District
Blue Earth Co., MN
011787-9

Gendler House
324 Liberty St. E.
Lincoln Park Residential Historic District
Blue Earth Co., MN

011787-9

Photographer: Gemini Research

October 1993

MN Historical Society, 345 Kellogg Blvd. W., St. Paul, MN 55102-1906

Looking North

#128



Little House, # 132
Lincoln Park Residential Historic District
Blue Earth Co., MN
011770-15

Little House

113 Lincoln St.

Lincoln Park Residential Historic District

Blue Earth Co., MN

Photographer: Gemini Research

October 1993

MN Historical Society, 345 Kellogg Blvd. W., St. Paul, MN 55102-1906

Looking South

#132 ✓

011770-15



Eckman House, #136
Lincoln Park Residential Historic District
Blue Earth Co., MN
011770-20

Eckman House

121 Lincoln St.

Lincoln Park Residential Historic District

Blue Earth Co., MN

Photographer: Gemini Research

October 1993

MN Historical Society, 345 Kellogg Blvd. W., St. Paul, MN 55102-1906

Looking SE

#136

011770-20



Wiser House, #138 (non-contributing)
Lincoln Park, Residential Historic District
Blue Earth Co., MN
01771-8A

Wiser House (non-contributing)

011771-FA

124 Lincoln

Lincoln Park Residential Historic District

Blue Earth Co., MN

Photographer; Gemini Research

October 1993

MN Historical Society, 345 Kellogg Blvd. W, St. Paul, MN 55102-1906

Looking North

#138



Holman House # 141 (GARAGE)
Lincoln Park Residential Historic District
Blue Earth Co., MN
011772-10

Homan House (GARAGE)

011772-10

137 Lincoln St.

Lincoln Park Residential Historic District

Blue Earth Co., MN

Photographer: Gemini Research

October 1993

MN Historical Society, 345 Kellogg Blvd. W., St. Paul, MN 55102-1906

Looking West

141



Holman House # 141
Lincoln Park Residential Historic District
Blue Earth Co., MN
011772-6

Holman House
137 Lincoln St

011772-6

Lincoln Park Residential Historic District

Blue Earth Co., MN

Photographer: Gemini Research

October 1993

MN Historical Society, 345 Kellogg Blvd. W., St. Paul, MN 55102-1906

Looking SW

#141



Wysong House #142 (non-contributing)
Lincoln Park Residential Historic District
Blue Earth Co., MN
011775-11

Wysong House (non-contributing)

011775-11

205 Lincoln St.

Lincoln Park Residential Historic District

Blue Earth Co., MN

Photographer: Gemini Research

October 1993

MN Historical Society, 345 Kellogg Blvd. W., St. Paul, MN 55102-1906

Looking South

#142



Batzner House, # 143
Lincoln Park Residential Historic District
Blue Earth Co., MN
011775-9

Batzner House
209 Lincoln St.

011775-9

Lincoln Park Residential Historic District
Blue Earth Co., MN

Photographer: Gemini Research

October 1993

MN Historical Society, 345 Kellogg Blvd. W., St. Paul, MN 55102-1906

Looking SE
#143 ✓



Ray House #145
Lincoln Park Residential Historic District
Blue Earth Co., MN
011775-5

Ray House
217 Lincoln St.

011775-5

Lincoln Park Residential Historic District

Blue Earth Co., MN

Photographer: Gemini Research

October 1993

MN Historical Society, 345 Kellogg Blvd. W., St. Paul, MN 55102-1906

Looking South
#145



Taylor House, #146 (CARRIAGE HOUSE)
Lincoln Park Residential Historic District
Blue Earth Co., MN
011775-17

Taylor House (CARRIAGE HOUSE)

011775-17

221 Lincoln St.

Lincoln Park Residential Historic District

Blue Earth Co., MN

Photographer: Gemini Research

October 1993

MN Historical Society, 345 Kellogg Blvd. W., St. Paul, MN 55102-1906

Looking NE

#146



House, #150 (non-contributing)
Lincoln Park Residential Historic District
Blue Earth Co., MN
011773-5

House (non-contributing)

011773 - 5

234 Lincoln St.

Lincoln Park Residential Historic District

Blue Earth Co., MN

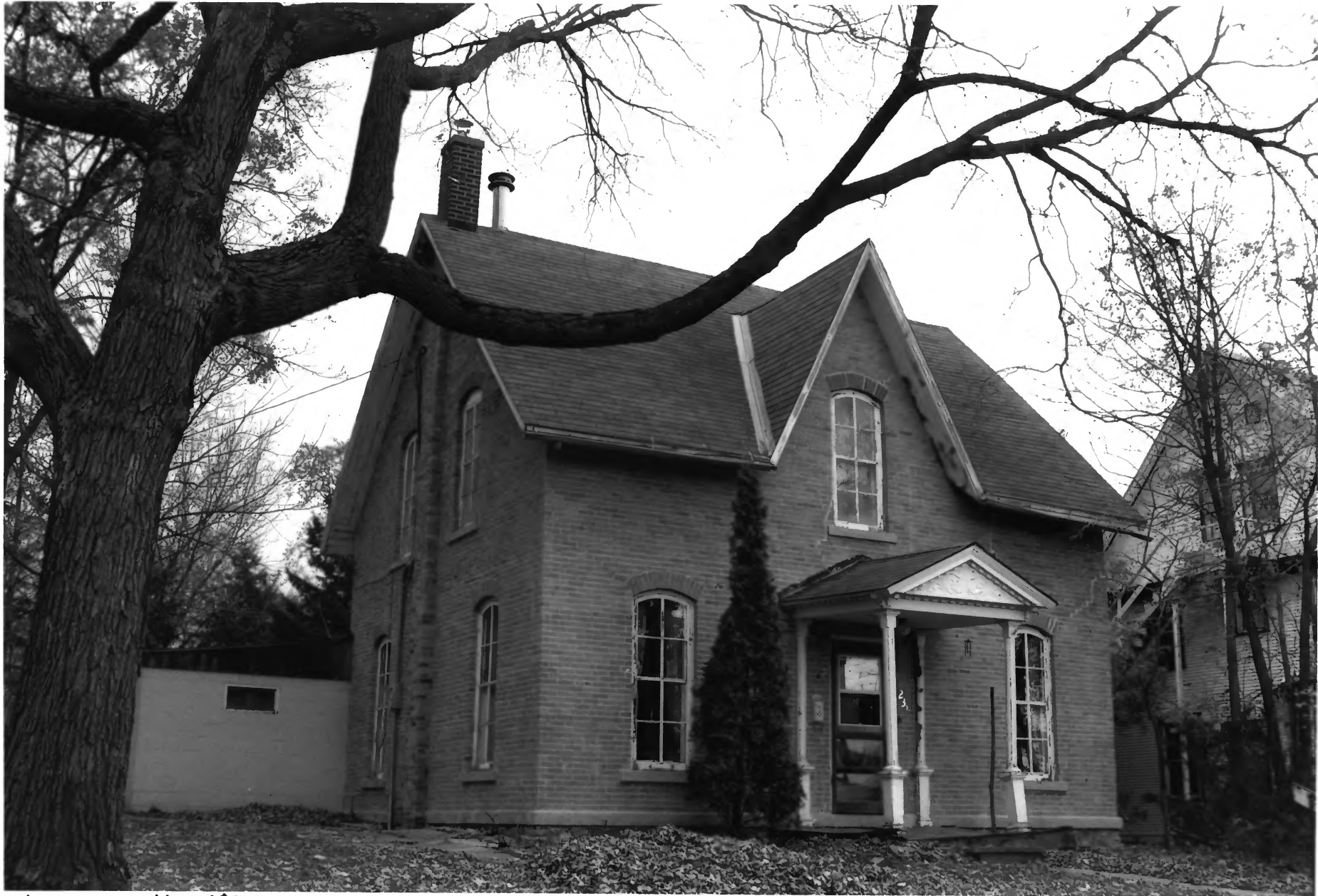
Photographer: Gemini Research

October 1993

MN Historical Society, 345 Kellogg Blvd. W., St. Paul, MN 55102-1906

Looking NE

150



House, #149
Lincoln Park Residential Historic District
Blue Earth Co., MN
011766-19A

HOWE HOUSE

233 Lincoln St.

Lincoln Park Residential Historic District

Blue Earth Co., MN

Photographer: Gemini Research

October 1993

MN Historical Society, 345 Kellogg Blvd. W., St. Paul, MN 55102-1906

Looking South

#151

011766-19A



Pettersen House, #156
Lincoln Park Residential Historic District
Blue Earth Co., MN
011767-13

Pettersen House

011767-13

216 Lock St.

Lincoln Park Residential Historic District

Blue Earth Co., MN

Photographer: Gemini Research

October 1993

MN Historical Society, 345 Kellogg Blvd. W., St. Paul, MN 55102-1906

Looking SW

#156



Girvin House, #157 (GARAGE)
Lincoln Park Residential Historic District
Blue Earth Co., MN
01762-20

Girvin House (GARAGE)

011762-20

220 Lock St.

Lincoln Park Residential Historic District

Blue Earth Co., MN

Photographer: Gemini Research

October 1993

MN Historical Society, 345 Kellogg Blvd. W., St. Paul, MN 55102-1906

Looking West

#157



Baker House # 160
Lincoln Park Residential Historic District
Blue Earth Co., MN
011783-21

Baker House
104 Parsons St.

011783-21

Lincoln Park Residential Historic District

Blue Earth Co., MN

Photographer: Gemini Research

October 1993

MN Historical Society, 345 Kellogg Blvd. W., St. Paul, MN 55102-1906

Looking West

#160



Kruse Terrace #164
Lincoln Park Residential Historic District
Blue Earth Co, MN
011768-22

Kruse Terrace

011768-22

116 Parsons St.

Lincoln Park Residential Historic District

Blue Earth Co., MN

Photographer; Gemini Research

October 1993

MN Historical Society, 345 Kellogg Blvd. W., St. Paul, MN 55102-1906

Looking NW

#164



Kruse Terrace, #164
Lincoln Park Residential Historic District
Blue Earth Co., MN
11768-21

Kruse Terrace

116 Parsons St

Lincoln Park Residential Historic District

Blue Earth Co., MN

Photographer: Gemini Research

October 1993

MN Historical Society, 345 Kellogg Blvd. W., St. Paul, MN 55102-1906

Looking NW

#164

011768-21



Scherer House, #170 (non-contributing)
Lincoln Park Residential Historic District
Blue Earth Co., MN
011774-22

Scherer House (non-contributing) 011774-22
115 Pleasant St, E.
Lincoln Park Residential Historic District
Blue Earth Co., MN
Photographer: Gemini Research
October 1993
MN Historical Society, 345 Kellogg Blvd. W., St. Paul, MN 55102-1906
Looking SE
#170



Collins House, #173
Lincoln Park Residential Historic District
Blue Earth Co., MN
11763-18

011763-18

Collins House

118 Pleasant St. E

Lincoln Park Residential Historic District

Blue Earth Co., MN

Photographer: Gemini Research

October 1993

MN Historical Society, 345 Kellogg Blvd. W., St. Paul, MN 55102-1906

Looking NE

#173



Barney House, #176
Lincoln Park Residential Historic District
Blue Earth Co., MN
011763-24

Barney House
126 Pleasant St. E.

011763-24

Lincoln Park Residential Historic District

Blue Earth Co., MN

Photographer: Gemini Research

October 1993

MN Historical Society, 345 Kellogg Blvd. W., St. Paul, MN 55102-1906

Looking NE

#176



Conway House, #177
Lincoln Park Residential Historic District
Blue Earth Co., MN
011769-2A

Conway House

011769-2A

128 Pleasant St. E.

Lincoln Park Residential Historic District

Blue Earth Co., MN

Photographer: Gemini Research

October 1993

MN Historical Society, 345 Kellogg Blvd. W., St. Paul, MN 55102-1906

Looking NE

#177



House, #180
Lincoln Park Residential Historic District
Blue Earth Co., MN
011769-5A

House

011769-5A

134 Pleasant St. E.

Lincoln Park Residential Historic District

Blue Earth Co., MN

Photographer: Gemini Research

October 1993

MN Historical Society, 345 Kellogg Blvd. W., St. Paul, MN 55102-1906

Looking NE

#180



Durkee/Veigel House, #181
Lincoln Park Residential Historic District
Blue Earth Co., MN
011793-15

Durkee/Veigel House

011793-15

139 Pleasant St. E.

Lincoln Park Residential Historic District

Blue Earth Co., MN

Photographer: Gemini Research

October 1993

MN Historical Society, 345 Kellogg Blvd. W., St. Paul, MN 55102-1906

Looking SE

#181



Hart House, #182
Lincoln Park Residential Historic District
Blue Earth Co., MN
011760-14

Hart House

011760 - 14

203 Pleasant St. E.

Lincoln Park Residential Historic District

Blue Earth Co., MN

Photographer: Gemini Research

October 1993

MN Historical Society, 345 Kellogg Blvd. W, St. Paul, MN 55102-1906

Looking SW

#182



Otto/Messer House, # 184
Lincoln Park Residential Historic District
Blue Earth Co., MN
011768-2

Otto/Messer House

011768-2

212 Pleasant St. E.

Lincoln Park Residential Historic District

Blue Earth Co., MN

Photographer: Gemini Research

October 1993

MN Historical Society, 345 Kellogg Blvd. W., St. Paul, MN 55102-1906

Looking NE

#184



Funk/Pay House, # 185 (non-contributing)
Lincoln Park Residential Historic District
Blue Earth Co., MN
011760-18

Funk/Pay House (non-contributing)

011760-18

215 Pleasant St. E.

Lincoln Park Residential Historic District

Blue Earth Co, MN

Photographer: Gemini Research

October 1993

MN Historical Society, 345 Kellogg Blvd. W, St. Paul, MN 55102-1906

Looking SE

#185



Barr/Morse House, #186
Lincoln Park Residential Historic District
Blue Earth Co., MN
011768-5

Barr/Morse House

011768-5

216 Pleasant St. E.

Lincoln Park Residential Historic District

Blue Earth Co., MN

Photographer: Gemini Research

October 1993

MN Historical Society, 345 Kellogg Blvd. W., St. Paul, MN 55102-1906

Looking NE

#186



Hawkes/Pfaw House, #187
Lincoln Park Residential Historic District
Blue Earth Co., MN
011768-10

011768-10

Hawkes/Pfau House
222 Pleasant St. E.

Lincoln Park Residential Historic District

Blue Earth Co., MN

Photographer: Gemini Research

October 1993

MN Historical Society, 345 Kellogg Blvd. W, St. Paul, MN 55102-1906

Looking NW

#187



Mansfield House, #188
Lincoln Park Residential Historic District
Blue Earth Co., MN
011760-22

Mansfield House
227 Pleasant St. E.

011760 - 22

Lincoln Park Residential Historic District

Blue Earth Co., MN

Photographer: Gemini Research

October 1993

MN Historical Society, 345 Kellogg Blvd. W, St. Paul, MN 55102-1906

Looking SW

188



McGovern House, #192
Lincoln Park Residential Historic District
Blue Earth Co., MN
011768-16

McGovern House

236 Pleasant St. E.

Lincoln Park Residential Historic Site

Blue Earth Co., MN

Photographer: Gemini Research

October 1993

MN Historical Society, 345 Kellogg Blvd. W., St. Paul, MN 55102-1906

Looking NE

#192

011768-16



House, # 215
Lincoln Park Residential Historic District
Blue Earth Co., MN
011778-23

House

525 Record St.

Lincoln Park Residential Historic District

Blue Earth Co., MN

Photographer: Gemini Research

October 1993

MN Historical Society, 345 Kellogg Blvd. W., St. Paul, MN 55102-1906

Looking NE

#215

011778-23