

216



United States Department of the Interior National Park Service National Register of Historic Places Registration Form

This form is for use in nominating or requesting determination for individual properties and districts. See instruction in *How to Complete the National Register of Historic Places Registration Form* (National Register Bulletin 16A). Complete each item by marking "x" in the appropriate box or by entering the information requested. If an item does not apply to the property being documented, enter "N/A" for "not applicable." For functions, architectural classification, materials and areas of significance, enter only categories and subcategories from the instructions. Place additional entries and narrative items on continuation sheets (NPS Form 10-900a). Use a typewriter, word processor, or computer, to complete all items.

1. Name of Property

historic name Lincoln School

other names/site number School for the Performing Arts; 5MR.892

2. Location

street & number 914 State Street [N/A] not for publication

city or town Fort Morgan [N/A] vicinity

state Colorado code CO county Morgan code 087 zip code 80701

3. State/Federal Agency Certification

As the designated authority under the National Historic Preservation Act, as amended, I hereby certify that this nomination request for determination of eligibility meets the documentation standards for registering properties in the National Register of Historic Places and meets the procedural and professional requirements set forth in 36 CFR Part 60. In my opinion, the property meets does not meet the National Register criteria. I recommend that this property be considered significant nationally statewide locally. (See continuation sheet for additional comments.)

AWJ Deputy State Historic Preservation Officer 3/11/10
Signature of certifying official/Title Date

Office of Archaeology and Historic Preservation, Colorado Historical Society
State or Federal agency and bureau

In my opinion, the property meets does not meet the National Register criteria. ([] See continuation sheet for additional comments.)

Signature of certifying official/Title Date

State or Federal agency and bureau

4. National Park Service Certification

I hereby certify that the property is:

- entered in the National Register See continuation sheet.
- determined eligible for the National Register See continuation sheet.
- determined not eligible for the National Register.
- removed from the National Register See continuation sheet.
- other, explain See continuation sheet.

Box Signature of the Keeper 4.27.10 Date of Action
Edson H. Beall

Lincoln School
Name of Property

Morgan County, Colorado
County/State

5. Classification

Ownership of Property

(Check as many boxes as apply)

- private
- public-local
- public-State
- public-Federal

Category of Property

(Check only one box)

- building(s)
- district
- site
- structure
- object

Number of Resources within Property

(Do not count previously listed resources.)

Contributing	Noncontributing	
1	0	buildings
0	0	sites
0	0	structures
0	0	objects
1	0	Total

Name of related multiple property listing.

(Enter "N/A" if property is not part of a multiple property listing.)

N/A

Number of contributing resources previously listed in the National Register.

0

6. Function or Use

Historic Function

(Enter categories from instructions)

EDUCATION: School

Current Functions

(Enter categories from instructions)

EDUCATION: School

7. Description

Architectural Classification

(Enter categories from instructions)

LATE 19TH AND 20TH CENTURY REVIVALS:
Mission/Spanish Colonial Revival

Materials

(Enter categories from instructions)

foundation CONCRETE
walls BRICK
roof ASPHALT
other

Narrative Description

(Describe the historic and current condition of the property on one or more continuation sheets.)

**National Register of Historic Places
Continuation Sheet****United States Department of the Interior
National Park Service**

Lincoln School, Morgan County, Colorado

Section number 7 Page 1**DESCRIPTION**

The 1909 Lincoln School building is located in the City of Fort Morgan in northeastern Colorado. The Lincoln School is north of the Fort Morgan's historic commercial downtown and north of Platte Avenue. It sits one block east of north Main Street on State Street within a residential district. Lincoln School stands on the west side of the lot facing State Street with a dirt covered north side lot for parking. The school sets back 40' from the street with a rounded corner sidewalk on the north and front, lawn, and deciduous scrubs near the entrance. The school district purchased the lots on the south side of the school in 1929 for a playground and in 2003 sold the south lots for residential housing.

Architect John J. Huddart designed the original building containing the front two classrooms. In 1920, the school district approved an addition making the school nearly three times as long. The addition provided four new classrooms in the first level along with a principal's office, gymnasium with a small stage, and restrooms in the garden level basement. Architect Floyd Redding designed the addition with local contractor J. Jackson as the builder. The Lincoln School building is a one-story rectangular plan, red brick building set on a concrete foundation with a garden level basement. Banded rustication extends on the full height of the central entrance bay and continues on the on the lower portion of the remainder of the building. Wide overhanging eaves cover the wood framed hipped roof. The building measures approximately 68.5' x 96.5'.

Façade

The symmetrical façade is composed of three bays. Two side bays flank a predominant central entrance bay and are setback from the entrance bay by approximately 6'. A small concrete stoop, accessed by six concrete steps, provides access to the centrally positioned entrance. A concrete ADA ramp, added in 1991, extends from the stoop to the south edge of the building. A metal door with a narrow light replaced the original entry door likely in the 1960s. A side light panel appears next to the door with a metal panel in the lower one-third. A plywood-filled transom replaced the original multi-pane vertical glass transom at an unknown date. A row of bull stretcher faced brick surrounds the main entry door while an additional row appears on either side of the door. A row of soldier brick tops the bull stretcher surround. Two one-over-one double hung windows with stone sills exist on either side of the entrance. Vertical brick segments placed diagonally create a keystone design topping each window. Banded rustication extends the full height of the central bay stopping at the bottom of a mission styled curvilinear parapet with brick coping. A small arched vent with a rowlock surround exists in the center of the parapet. Directly below the vent is an inset sign containing the name "Lincoln School." Two concrete capped piers stand at the north and south sides of the parapet, extending slightly above the lowest edge of the parapet. The two setback façade bays contain three one-over-one double hung windows with stone sills equally positioned in the upper section of the walls.

North and south sides

The north and south elevations each have three bays of one-over-one double hung windows with two side doors dividing the middle and east bays. The west bay, the 1909 portion of the building, has four one-over-one double hung windows. Four identical windows pierce the

**National Register of Historic Places
Continuation Sheet****United States Department of the Interior
National Park Service**

Lincoln School, Morgan County, Colorado

Section number 7 Page 2

garden level basement wall of the west bay. The middle and east bays, both being in the 1920 addition, each contain two groups of four one-over-one double hung windows which are narrower than the windows in the 1909 section. Eight six-over-six double hung windows appear in the basement level of the middle and east bays. Two metal doors topped by transoms separate the middle and east bays and allow exterior egress from those classrooms. An extended eave with triangular brackets covers the metal doors. Six metal steps with metal railing provide access to a metal landing for both doors. Two rows of horizontal metal railing extend approximately 4' above groups of the basement window wells on the west and middle bays preventing students from falling into the window wells.

East side (back)

Two nine-over-one double hung windows appear on either side of a centrally positioned metal door with a side light; the door and side light match the one at the front entrance. This door replaced the original rear door likely in the 1960s. Four twelve-paned fixed windows appear above the back door. Six nine-over-one double hung windows exist on the garden level. North of the rear entrance, a large brick chimney projects from the wall approximately 3' and beginning at the ground extends the height of the building and about 12' above the roof eave.

Interior

The front door leads into a central hall extending the length of the building. Six classrooms, two from the original building and four from the 1920 addition, symmetrically flank the hallway with three on each side. Original wood and glass panel doors topped by operable transoms provide entry to each classroom from the hallway. Wooden rails accent the walls with the original coat hooks. All of the original windows, door hardware, wooden stair banisters, and wooden floors are intact. Carpet now covers most of the school floors. The 1920 garden level basement originally consisted of restrooms, a gymnasium and stage, along with a storage area. It did not have cafeteria facilities.

Alterations

In 1950, the School District converted the gymnasium into additional classrooms. During the late 1960s, a solid metal door with a narrow light, with a panel with a window in the upper portion replaced the original wooden exterior doors. Likely, the owner filled in the multi-pane glass transom above the doors at this time and added a suspended ceiling. Additionally, the owner replaced the 1920 side doors with metal doors. Without photograph documentation of the building sides, it is unknown what type of doors occupied the openings in 1920. In 1991, the owner added a handicap accessible ramp extending from the front door, removed the brick sidewalls on the front staircase, and changed the staircase to be more accessible. Additionally, the owner added two restrooms on the main floor with handicap accessibility, resulting in a reduction of square footage for the middle classroom on the north side. Recent owners divided one classroom, on the southeastern corner, into an office space and small library.

8. Statement of Significance

Applicable National Register Criteria

(Mark "x" in one or more boxes for the criteria qualifying the property for National Register listing.)

- Property is associated with events that have made a significant contribution to the broad patterns of our history.
Property is associated with the lives of persons significant in our past.
Property embodies the distinctive characteristics of a type, period, or method of construction or represents the work of a master, or possesses high artistic values, or represents a significant and distinguishable entity whose components lack individual distinction.
Property has yielded, or is likely to yield, information important in prehistory or history.

Criteria Considerations

(Mark "x" in all the boxes that apply.)

Property is:

- A owned by a religious institution or used for religious purposes.
B removed from its original location.
C a birthplace or grave.
D a cemetery.
E a reconstructed building, object, or structure.
F a commemorative property.
G less than 50 years of age or achieved significance within the past 50 years.

Narrative Statement of Significance

(Explain the significance of the property on one or more continuation sheets.)

Areas of Significance

(Enter categories from instructions)

Architecture

Education

Periods of Significance

1909-1960

Significant Dates

1920

Significant Person(s)

(Complete if Criterion B is marked above.)

N/A

Cultural Affiliation

N/A

Architect/Builder

Huddart, John J. /Briggs, W. C.

Redding, Floyd & Sons /Jackson, J.

9. Major Bibliographical References

Bibliography

(Cite the books, articles and other sources used in preparing this form on one or more continuation sheets.)

Previous documentation on file (NPS):

- preliminary determination of individual listing (36 CFR 67) has been requested
previously listed in the National Register
previously determined eligible by the National Register
designated a National Historic Landmark
recorded by Historic American Buildings Survey

#

- recorded by Historic American Engineering Record

#

Primary location of additional data:

- State Historic Preservation Office
Other State Agency
Federal Agency
Local Government
University
Other

Name of repository:

Colorado Historical Society

**National Register of Historic Places
Continuation Sheet****United States Department of the Interior
National Park Service**

Lincoln School, Morgan County, Colorado

Section number 8 Page 3**SIGNIFICANCE**

The 1909 Lincoln School in Fort Morgan is eligible for the National Register of Historic Places under **Criterion C** for its architectural significance. It is a good local example of the Mission style as adapted to a school. The school's prominent feature, the curvilinear gable and parapet, is one of the most character defining elements of the style. Other features of the style include a hipped roof and banded rustication on the central bay and lower portion of the building.

Additionally, the school is eligible under **Criterion A** for its important association with the educational development of several generations of Fort Morgan area children. From 1909 through 1962, the building served as one of four elementary schools in Fort Morgan for grades one through six. Beginning in 1962 and continuing through 1965, the school educated kindergarten through sixth grade students. A 1920 addition nearly tripled the school's capacity and its educational mission by including a gymnasium with a stage for recitals, plays, and educational entertainment.

The period of significance begins with the school opening in 1909. While the school continued until 1965, adding kindergarten classes in 1962, and activities associated with the school extend into a period less than fifty years before the nomination date, outstanding activities did not occur during this time. Therefore, in keeping with National Register guidelines the period of significance ends in 1960.

Lincoln School retains a high degree of integrity as it relates to design, materials, workmanship, location, feeling, and association. Due to the School District selling the south lots on which the playground and basketball courts existed in 2005, the school has lost some integrity as it relates to setting. However, the north lot is intact, provides some of the original setting, and reflects a good degree of integrity for the setting.

HISTORICAL BACKGROUND

Located about 80 miles northeast of Denver, Fort Morgan has a history of vigilance and resourcefulness as the community turned the adjacent plains into prosperous farmland. In 1882, two railroads, the Union Pacific and the Chicago, Burlington and Quincy, laid rails north and south of the future town site as they headed for Denver, thus increasing area land values. In 1884, Abner Baker, the founder of Fort Morgan, completed the region's first irrigation canal from the South Platte River and delivered life-sustaining water to surrounding farms. Baker platted the town the same year. By year-end, five houses and a twenty-room hotel stood complete. By 1908, the City Hall building on the southern end of Main Street and new businesses filled the lots between the 200 and 400 blocks of Main Street including a City Park and Platte Avenue, a main route on the east side of the town.

**National Register of Historic Places
Continuation Sheet****United States Department of the Interior
National Park Service**

Lincoln School, Morgan County, Colorado

Section number 8 Page 4***School History***

In 1884, enterprising pioneers settled and developed Fort Morgan by their ambitious, hard working, and high moral characteristics. A town with two railroads and rich irrigated farmland attracted businesses, farmers, and residents. The town's enterprise was not limited to economics. Prior to the town incorporating in 1887, churches organized, schools opened, a town band formed, and a baseball team emerged.

Preceding incorporation, in 1884, a community group submitted a petition to the County Superintendent of the Public Schools of Weld County requesting a new school district with associated boundaries for their community. Board minutes indicated that J.H. Farnsworth, proprietor of a local hotel, rented a building in the 200 block of Main Street for use as a school in 1884. He sold the building for \$400 to the district the following year. Sidney Prince taught the first class of 20 students in January of 1885.

Fort Morgan's schoolchildren continued their learning in makeshift classrooms until 1887 when the district constructed the first Fort Morgan school. The brick and stone building cost \$6,000 and stood on Deuel Street. As the community grew, the district built a three-year high school in 1895 with four students graduating in 1896. Although the state legislature created Morgan County in 1889 from the eastern section of Weld County, the County Superintendent of the Public Schools of Weld County waited to finalize Fort Morgan's request of creating a new school district until 1898, 15 years after the community's request. With the approval, School District Re #3 became independent from Weld County School District Re #47.

By 1901, a citizen donated one block of land on Lake Street for a new brick school, Central School, which included the high school. The community's pride in the schools matched their respect for the teachers. The community demonstrated its commitment to the schools in 1905 when a fire destroyed the 1896 high school. Citizens and the district quickly scrambled to find suitable arrangements for the students. The school held classes mostly in county buildings and churches. The school board called a meeting of all citizens to determine how to collect and borrow funds necessary to rebuild as soon as possible.

By 1905, the town's population reached 1500. A boom in the sugar beet industry in 1906 brought the Great Western Sugar Beet Factory and 2500 more people to the town resulting in 27 new businesses and 200 new homes. The community quickly outgrew the new Central School, necessitating the district to construct four new ward schools: Baker in 1908, Lincoln in 1909, Grant in 1910, and Garfield in 1915.

The School District commissioned Denver architect John J. Huddart to design Lincoln School. Fort Morgan based contractor W. C. Briggs and the School District entered into a contract dated June 7, 1909, to build the school according to Huddart's designs with a completion date on or before September 4, 1909. According to the contract terms, the agreed cost of all labor and materials was \$5,930.80. The entire town Block 5 served as the boundaries for the school. With the majority of Fort Morgan on the south side of Platte Street, little development appeared near the school site, which was on the north side. A ca. 1915 postcard featuring the school revealed one small building on the school lot north of the school. This was likely one of

**National Register of Historic Places
Continuation Sheet****United States Department of the Interior
National Park Service**

Lincoln School, Morgan County, Colorado

Section number 8 Page 5

possibly two privies. The photograph also revealed a larger building northeast of the school, which was likely a stable. The playground existed on the south side with a bench next to the building where students or teachers watched the playground activities. When completed, the two-room red brick edifice, measuring about 67' x 35', provided elementary schoolchildren from grades one through six not only a new learning facility, but also a social center of activity.

Fort Morgan's population continued to grow and in 1920, the School District expanded the Lincoln, Grant, and Central Schools. The Lincoln School's addition extended the building to the east another 61.5', making it nearly three times its original length. The addition included excavating a garden level basement for a gymnasium, storage rooms easily adaptable for small classrooms, and boys and girls restrooms. A small stage in the gymnasium provided a venue for recitals, plays, speakers, and other educational entertainment. Each classroom in the new section received its own exterior entrance along with the interior hall entrance. Increasing the number of classrooms from two to six on the first floor and when needed having additional classrooms in the basement proved necessary with the student attendance. Between 1924 and 1962, an average of 203 schoolchildren enrolled each year. In 1924 Lincoln School's attendance during the first week of classes was 213 children, the highest number, matched only once in 1933, until 1952. From 1952 until 1965, the average enrollment was 226 children per year. The boys' restroom included a shower room for the boys involved in sports activities in the gymnasium or physical education classes. A woman who attended the school from 1947-53 indicated at least one teacher occasionally requested boys to shower when they arrived at school or after their physical education class because they were "not clean!"¹

By 1931, a Sanborn Insurance Company map revealed the school lots only included the southwest quarter (Lots 17-26) of the entire Block 5 it once occupied. With the interior restrooms from the 1920 addition and the popularity of the automobile, the privy and stable were gone. Three single dwelling houses existed to the north and four occupied the east half of Block 5. School Board records indicate it repurchased the south two lots for a playground in 1929, without reference when the original sale of the lots occurred. Additionally the two and three adjacent vacant lots on the east half of the Block provided ample space for the schoolchildren to play softball and tag during recess. The gravel playground included a swing set and a marble pit. Children engaged in popular games including dodge ball, red rover, tag and later a tetherball.

With the new residential sector in place, many Lincoln School children walked home for lunch. However, some brought a very sparse lunch or ate nothing at all due to the depressed economy during the Great Depression. Northeastern Colorado suffered not only from the Depression, but also from the drought. President Franklin Roosevelt's New Deal agenda included the Works Progress Administration (WPA) programs to assist hard hit areas. The WPA's school lunch program was one of the many programs, which in 1937 assisted the School District to defray the cost of providing Lincoln School's students a hot meal. Although Lincoln School did not have a lunchroom, it is likely the WPA workers served the hot meals in

¹ Miller, Gwen (Osborne). Personal interview with Sharon Bishop at Lincoln School, September 2009. Transcript on file at Lincoln School-The School for the Performing Arts.

**National Register of Historic Places
Continuation Sheet****United States Department of the Interior
National Park Service**

Lincoln School, Morgan County, Colorado

Section number 8 Page 6

the gymnasium. However, the details of where the WPA workers prepared the meals and how they transported them to the school are unknown.

In 1950 oil discovery in the Denver-Julesburg basin caused another population growth to the area. The School District sold the Grant and Garfield schools and converted the Lincoln School gymnasium into classrooms. The district built three new grade schools, Green Acres School in 1954, and Columbine and Sherman Schools in 1956. Lincoln School used the basement classrooms for art, music, and square dance classes. Shirley Bowles attended Lincoln School from 1958-64 and recalled her music teacher, Merton Welch, who introduced her to the violin. She continued playing the violin through her senior year in high school. Bowles remembered, "... being bussed to Green Acres [school] for hot lunch and eating cold lunch (sack) downstairs in this building."² Family Fun Nights occurred occasionally at the school for all members of the students' families. These included games and activities in each room and a cakewalk.

In 1962, Lincoln School added kindergarten classes and continued educating the local children. Bill Reed attended kindergarten in 1963-64 and recalled his educational experience by "Being dragged out of the building by the nape of my neck by my kindergarten teacher to show me 'See, the leaves are not purple!'"³ Reed also recalled the teacher waking him up from naptime in his kindergarten class to tell the students someone shot President John F. Kennedy in November 1963. By 1966, the High School on Deuel Street was converted to a Junior High School and a new High School was built on Riverview Avenue. The School District used Lincoln School for special programs including Star School, from 1967-81; Head Start, from 1968-91; and an alternative high school from 1991 through 2003.

In 2005 the School District sold the school and south lots to Western Cleanup for \$25,000. While builders added new houses to the south two lots, the owner of Western Cleanup saw the value in the school and decided not to demolish it for new residential housing. Rather the firm donated the school to Aletheia, Inc., which in turn donated it to the School for the Performing Arts, the current owner.

John J. Huddart

John J. Huddart was born in Preston, Lancashire, England, August 25, 1856. He received his advanced education at Alston College, England, and graduated at the age of 19. He learned his profession in England serving his apprenticeship with J.C. Fill & Co. and with Hayward Tyler Engineering Company. Huddart traveled to South America and worked near Pernambuco, Brazil, where he designed a sugar refinery. He then immigrated to Jacksonville, Florida, and within a year proceeded to Denver. He served as chief draftsman in the offices of prominent Denver architect Frank Edbrooke from 1882 until 1887. In March 1887, he

² Bowles, Shirley. "My Lincoln School Memories." Unpublished collection of written memories collected at Lincoln School's 100th Anniversary, September 2009. On file at Lincoln School, Fort Morgan, Colorado.

³ Reed, Bill. "My Lincoln School Memories." Unpublished collection of written memories collected at Lincoln School's 100th Anniversary, September 2009. On file at Lincoln School, Fort Morgan, Colorado.

National Register of Historic Places Continuation Sheet

United States Department of the Interior
National Park Service

Lincoln School, Morgan County, Colorado

Section number 8 Page 7

established his own practice and during his career produced a large number of commissions. Among his prominent commercial structures were the Essex Building (1887, demolished) and the Bank Block (1889, demolished) in Denver; the Gold Mining Stock Exchange (1896) in Cripple Creek; and the American National Bank Building (1901) in Leadville. Other noteworthy buildings credited to Huddart include the Creswell Mansion (1889, National Register listed) and Kinneavy Terrace (1889-90), both in Denver and the Carnegie Library in Monte Vista (1919, National Register listed).

Huddart was particularly involved with public buildings and became well known as a courthouse architect, producing at least ten in Colorado as well as others in surrounding states. Huddart's courthouse design phase came primarily over a seven-year period beginning in 1905 during which he produced plans for six Colorado courthouses. His first commission came in 1905 for the Adams County Courthouse in Brighton. Similar projects quickly followed: Arapahoe County (1907-08); Cheyenne County (1908, National Register listed); Washington County (1908-10, State Register listed); Logan County (1908-10, National Register listed); Summit County (1909); and Saguache County (1910, State Register listed). The last courthouse commission of this period came from Elbert County in 1912. Two final courthouse projects came to Huddart late in his career – Lincoln County (1923, demolished) and Custer County (1929).

The Military Department of the State of Colorado hired Huddart in early 1921 to design a standard armory plan for use in the construction of facilities across the state. Huddart's standard armory plans finished by August 1921, included offices for one military company along with training and storage facilities. Huddart successfully designed 12 known armories across Colorado.

Additionally, Huddart designed various other schools, public buildings and residences as shown in the table below:

Credited Buildings (by construction date)

Building Name	Location	Site No.	Date	Assessment
Essex Building (Frank E. Edbrooke also credited with design)	1617 Lawrence St., Denver		1887	Demolished
Bank Block Denver			1889	Demolished
Creswell Mansion	1244 Grant St., Denver	5DV184	1889	National Register
Gilmore House	2401 Emerson St., Denver		1889	
Unnamed Terrace	2502-04 Clarkson St., Denver			
Unnamed House	1347 Williams St., Denver		1889	Demolished
Big Chief Bottling Co.	1539 Platte. St., Denver	5DV536	1890	
Kinneavy Terrace	2700 Stout St., Denver	5DV103	1890	Curtis Park HD
Athelston Apartments	Denver		1890	Demolished

National Register of Historic Places Continuation Sheet

United States Department of the Interior National Park Service

Lincoln School, Morgan County, Colorado

Section number 8 Page 8

Huddart Terrace	625 E. 16th St., Denver		1890	Denver Local Landmark
Armstrong House (with Jacobson)	2707 Humboldt St., Denver	5DV6997	1890	
Gross Barney Supply (with Jackson? Jacobson?)	1612 Wazee St., Denver	5DV47.154	1890	Lower Downtown Certified HD
Cole Lydon House	2418 Stout St., Denver	5DV103.15	1890	Curtis Park HD
Swift Building	Pueblo		1890	
Unnamed House	1374 Race St., Denver		1890	Demolished
Unnamed House	1400 Gilpin St., Denver		1890	Wyman Local HD
Stanley School	1301 Quebec St., Denver	5DV9942	1891	National Register
Kittredge Castle/Holland Hall	8 & 9 th Aves. and Olive and Oneida Sts, Denver		1891	Demolished
Horwitz Building (addition to 1891 building; rebuilt in 1892 following fire)	1630 Blake St., Denver	5DV47.25	1891	Lower Downtown Certified HD
Unnamed House	1259 York St., Denver		1891	Wyman Local HD
William L. Stevens House	Denver		1891	Demolished
McClair Apartments	Denver		1895	Demolished
Unnamed House	2149 High St., Denver	5DV2189	1892	
Unnamed House	1440 Vine St., Denver		1892	Demolished
E.W. Williams Mansion	1440 Williams St., Denver		1893	Wyman Local HD
Milheim House	1515 Race St., Denver	5DV4898	1893	Wyman Local HD
Charles M. Kittredge House	E. 8 th Ave. & Oneida St., Denver		1893	Demolished
Elks Lodge/Gold Mining Stock Exchange	373-379 E. Bennett Ave., Cripple Creek	5TL2.5	1896	Cripple Creek HD
American National Bank	Harrison Ave. & 5 th St., Leadville	5LK.40.24	1901	Leadville HD
Marion Harper House	256 Bannock St., Denver	5DV51.34	1902	Baker HD
Fire Station No. 15	1080 Clayton St., Denver	5DV5639	1903	
Hotel St. Regis	1540-44 Welton St., Denver	5DV502	1905	Demolished
Adams County Courthouse	22 S. 4 th Ave., Brighton	5AM92	1906	
Cheyenne County Courthouse	51 S. First St., Cheyenne Wells	5CH52	1909	National Register

National Register of Historic Places Continuation Sheet

United States Department of the Interior
National Park Service

Lincoln School, Morgan County, Colorado

Section number 8 Page 9

St. Thomas Theological Seminary (De Andreis House) (consulting architect)	1300 S. Steele St., Denver	5DV729	1908	National Register
Washington County Courthouse	150 Ash Ave., Akron	5WN94	1910	State Register
Logan County Courthouse	315 Main St., Sterling	5LO35	1908-10	National Register
Summit County Courthouse	208 E. Lincoln, Breckenridge	5ST130	1909	Breckenridge HD
Saguache County Courthouse	504 Fourth St., Saguache	5SH1392	1910	State Register
Elbert County Courthouse	215 Commanche St., Kiowa	5EL199	1912	
Sterling City Hall	214 Poplar St., Sterling		1912	
Akron High School	Akron		1915	Demolished
Sargent Consolidated School District – Elementary School	Monte Vista vicinity	5RN689	1917	State Register
Filbeck Building	1527 Champa St., Denver	5DV489	1917	
Carnegie Library	120 Jefferson St., Monte Vista	5RN513	1919	National Register
Queen of Heaven Orphanage	4825 Federal Blvd., Denver		1920	Demolished
Sargent Consolidated School District – High School	Monte Vista vicinity	5RN689	1921	State Register
State Armory	300 Strong St., Brighton	5AM120	1921	
State Armory	363 Grand Ave., Delta	5DT440	1921	
State Armory(with Sidney Frazier)	614 8TH Ave., Greeley	5WL4108	1921	
Lincoln County Courthouse	718 Third St., Hugo		1923	Demolished
Edison Elementary School	3350 Quitman St., Denver	5DV635	1925	Denver Local Landmark
Crested Butte High School	5700 Maroon Ave., Crested Butte	5GN3207	1927	

National Register of Historic Places Continuation Sheet

United States Department of the Interior
National Park Service

Lincoln School, Morgan County, Colorado

Section number 8 Page 10

Custer County Courthouse	205 S. 6 th St., Westcliffe		1929	
Fort Lupton Library	453 First St., Ft. Lupton		1929	

Undated Buildings

State Armory	Brush			
State Armory	Cañon City			
State Armory	Fort Collins			
State Armory	Fort Morgan			
State Armory	Fruita			
State Armory	Lamar			
State Armory	Manzanola			
State Armory	Pueblo			
Arcade Building	Denver			
Charles Boettcher House	1201 Grant St., Denver			Demolished
Paris Building	Denver			
Gus Holmes Building	Salt Lake City, UT			
Bank of Montrose	Montrose			
School Building	Englewood			
School Building	Durango			
Unknown Building	Colorado Springs			
Unknown Building	Grand Junction			
Unknown Building	Rico			

Redding & Son

William Redding and his son practiced architecture from their Boulder-based offices. The firm designed Boulder's 1905 University Hill School, the Boulder Preparatory School and the 1907 Boulderado Hotel (National Register listed in NRIS 94001226).

**National Register of Historic Places
Continuation Sheet****United States Department of the Interior
National Park Service**

Lincoln School, Morgan County, Colorado

Section number 9 Page 11**BIBLIOGRAPHY**

The Fort Morgan Times, November 1923.

Gilbert, Pamela S. "Columbian School." National Register of Historic Places nomination dated October 1, 2003. On file at the Colorado Office of Archaeology and Historic Preservation, Denver, Colorado.

Haley, Richard. "Excellent Education Goal for Morgan's Youth." *The Fort Morgan Times, Centennial Edition*. September 4, 1984, Section E, p. 2. On file at the Fort Morgan Museum Permanent Collection, Fort Morgan, Colorado.

Haley, Richard. "Schools' Goals: Meet needs, attract, Hold Productive Citizens." *The Fort Morgan Times, Centennial Edition*. September 4, 1984, Section E, p. 3. On file at the Fort Morgan Museum Permanent Collection, Fort Morgan, Colorado.

Hall, Frank. *History of the State of Colorado*. Vol. IV. Chicago, IL: The Blakely Printing Company, 1895.

La Porte, John. "Lincoln observes its 100th." *The Fort Morgan Times*. September 1, 2009.

McKie, Sylvia. Personal interview with Barbara Keenan at Fort Morgan Public Library, June 2009. Transcript on file at Lincoln School-School for the Performing Arts, Fort Morgan, Colorado.

Miller, Gwen. Personal interview with Barbara Keenan at Fort Morgan Public Library, June 2009. Transcript on file at Lincoln School-School for the Performing Arts, Fort Morgan, Colorado.

Ravert, Marge. Personal interview with Barbara Keenan at Fort Morgan Public Library, June 2009. Transcript on file at Lincoln School-School for the Performing Arts, Fort Morgan, Colorado.

School District Re 3 School District Board Minutes, 1909 – 1920. On file at the Fort Morgan School District, Fort Morgan, Colorado.

Warranty Deeds. Morgan County Clerk and Recorder, Morgan County Courthouse, Fort Morgan, Colorado.

Lincoln School
Name of Property

Morgan County, Colorado
County/State

10. Geographical Data

UTM References

(Place additional UTM references on a continuation sheet.)

Acreage of Property less than one

1. 13 602 107 4456 949 (NAD27)

Zone Easting Northing

2. Zone Easting Northing

3. Zone Easting Northing

4. Zone Easting Northing

The UTM's were derived by the Office of Archaeology and Historic Preservation from heads up digitization on Digital Raster Graphic (DRG) maps provided to OAHP by the U.S. Bureau of Land Management.

Verbal Boundary Description

(Describe the boundaries of the property on a continuation sheet.)

Boundary Justification

(Explain why the boundaries were selected on a continuation sheet.)

11. Form Prepared By

name/title Lyn Deal (for property owner)

organization _____ date November 21, 2009

street & number 615 E. Beaver Avenue telephone _____

city or town Fort Morgan state CO zip code 80701

Additional Documentation

Submit the following items with the completed form:

Continuation Sheets

Maps

A **USGS map** (7.5 or 15 minute series) indicating the property's location.

A **Sketch map** for historic districts and properties having large acreage or numerous resources.

Photographs

Representative **black and white photographs** of the property.

Additional Items

(Check with the SHPO or FPO for any additional items)

Property Owner

(Complete this item at the request of SHPO or FPO.)

Name School for the Performing Arts (James Graff, contact)

street & number 914 State Street telephone (970) 867-2924

city or town Fort Morgan state CO zip code 80701

Paperwork Reduction Act Statement: This information is being collected for applications to the National Register of Historic Places to nominate properties for listing or determine eligibility for listing, to list properties, and to amend existing listings. Response to this request is required to obtain a benefit in accordance with the National Historic Preservation Act, as amended (16 U.S.C. 470 *et seq.*)

Estimated Burden Statement: Public reporting burden for this form is estimated to range from approximately 18 hours to 36 hours depending on several factors including, but not limited to, how much documentation may already exist on the type of property being nominated and whether the property is being nominated as part of a Multiple Property Documentation Form. In most cases, it is estimated to average 36 hours per response including the time for reviewing instructions, gathering and maintaining data, and completing and reviewing the form to meet minimum National Register documentation requirements. Direct comments regarding this burden estimate or any aspect of this form to the Chief, Administrative Services Division, National Park Service, 1849 C St., NW, Washington, DC 20240.

**National Register of Historic Places
Continuation Sheet**

Lincoln School, Morgan County, Colorado

**United States Department of the Interior
National Park Service**Section number 10 Page 12

GEOGRAPHICAL DATA**VERBAL BOUNDARY DESCRIPTION**

The nominated area stands on the east side of State Street between 8th and 9th avenues in the City of Fort Morgan, Morgan County, Colorado, which consists of Lots 21 – 26, Block 5, of the Park Addition Subdivision, in the NE $\frac{1}{4}$ SW $\frac{1}{4}$ NW $\frac{1}{4}$ NE $\frac{1}{4}$ of Section 6, Township 3 North, Range 57 West, of the 6th P.M.

BOUNDARY JUSTIFICATION

The boundary includes the parcel of land historically associated with the Lincoln School. Two lots originally associated with the Lincoln School were sold in 2005 by the School District.

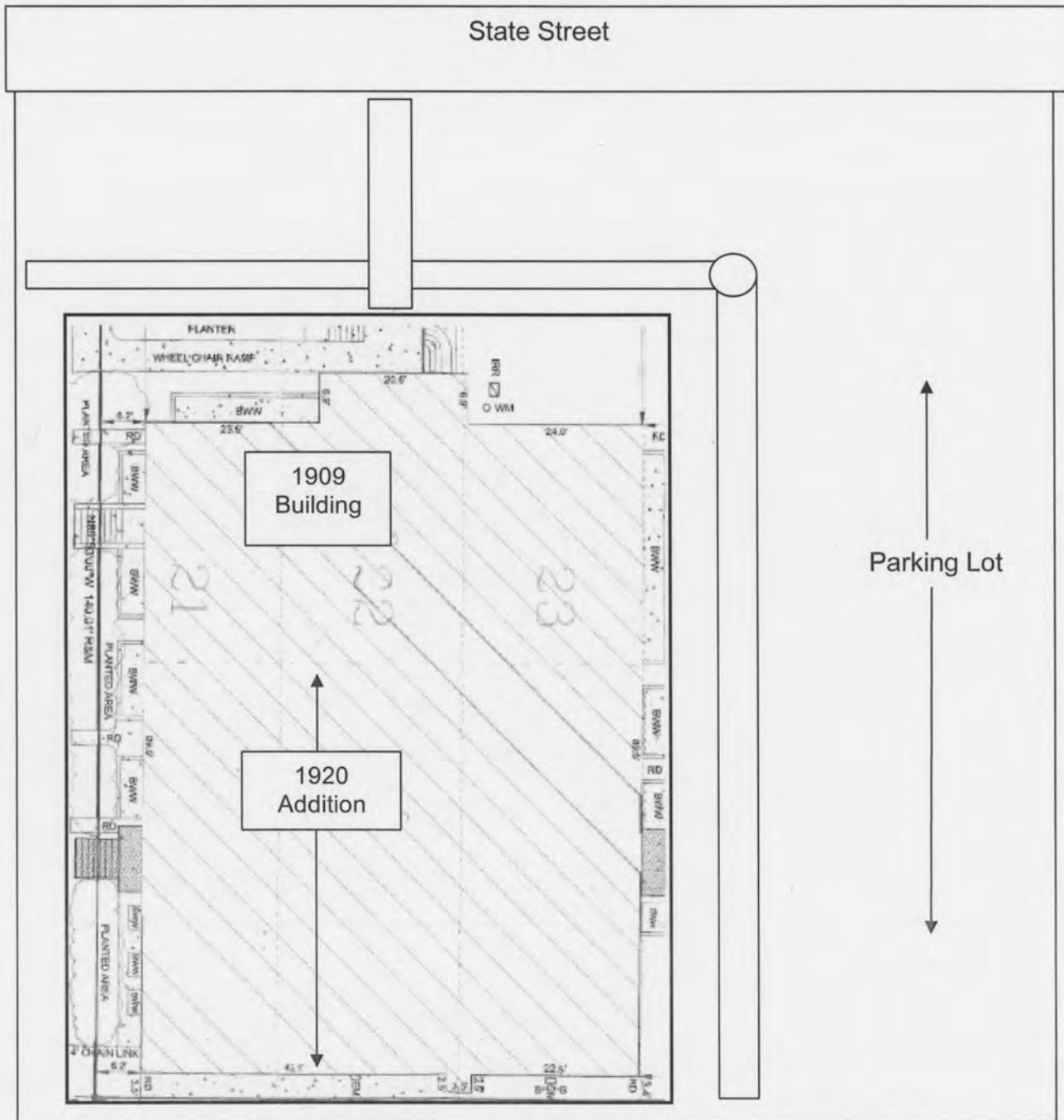
National Register of Historic Places Continuation Sheet

Lincoln School, Morgan County, Colorado

United States Department of the Interior
National Park Service

Section number 10 Page 13

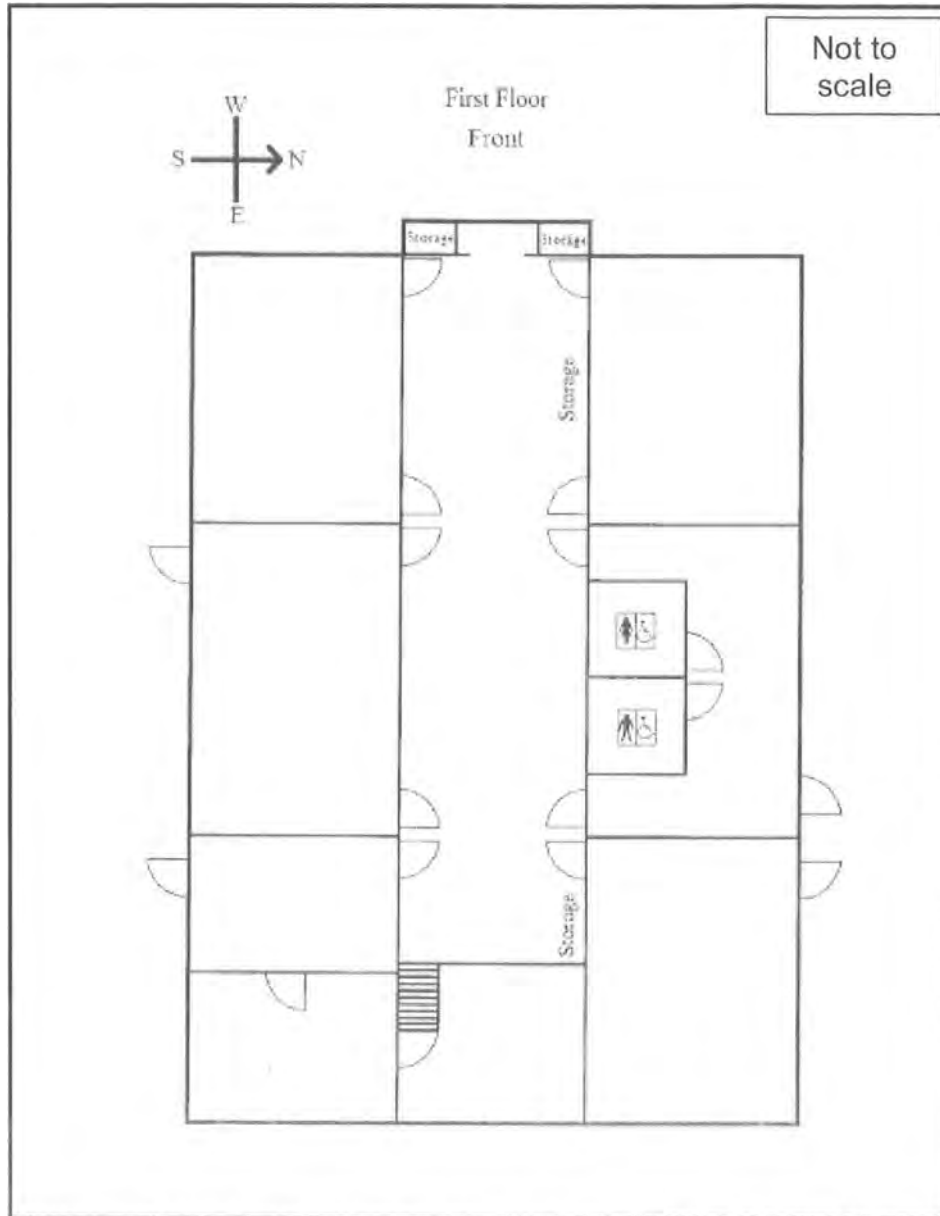
SKETCH MAP OF BUILDING (NOT TO SCALE)



**National Register of Historic Places
Continuation Sheet**
Lincoln School, Morgan County, Colorado

**United States Department of the Interior
National Park Service**
Section number 10 Page 14

SKETCH MAP FIRST FLOOR



Sketch Map drawn by Jenny Wilson, August 2008

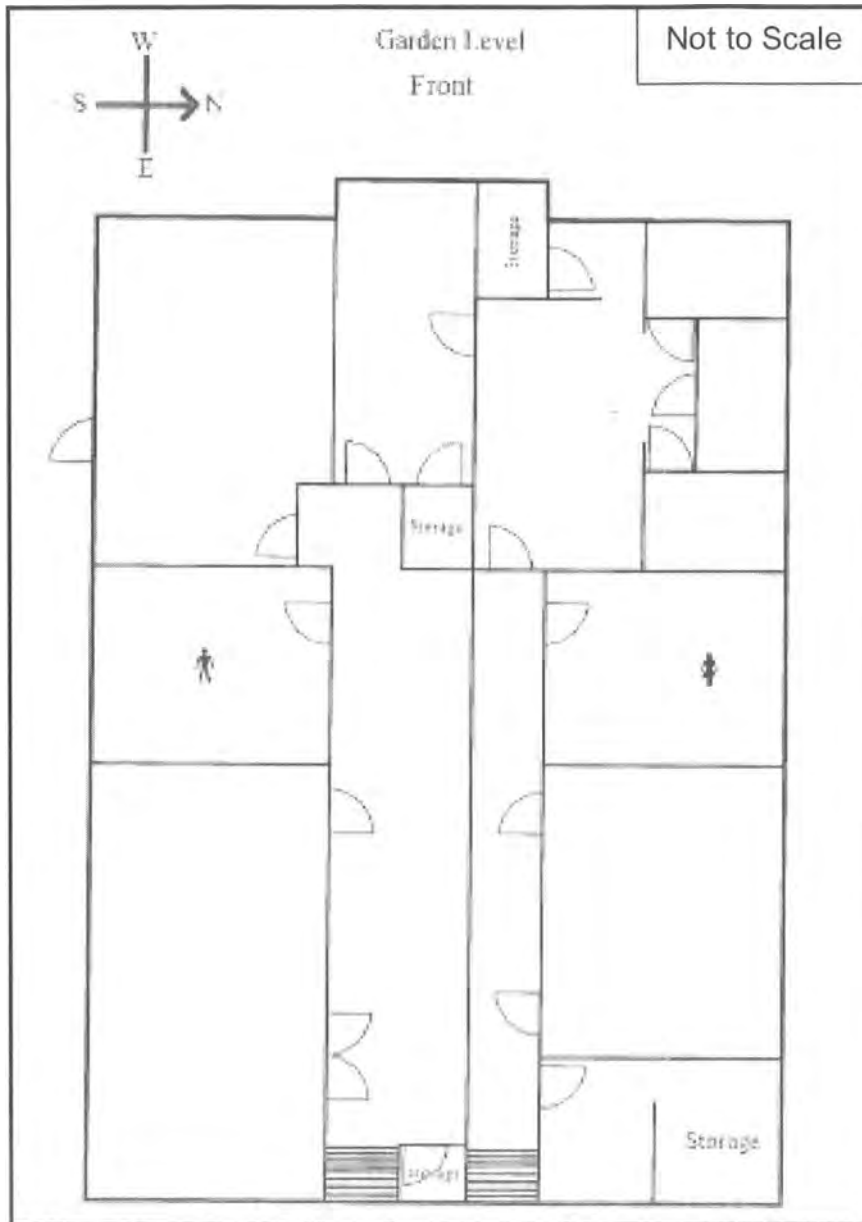
National Register of Historic Places Continuation Sheet

Lincoln School, Morgan County, Colorado

United States Department of the Interior
National Park Service

Section number 10 Page 15

SKETCH MAP - GARDEN LEVEL BASEMENT



Sketch Map drawn by Jenny Wilson, August 2008

National Register of Historic Places Continuation Sheet

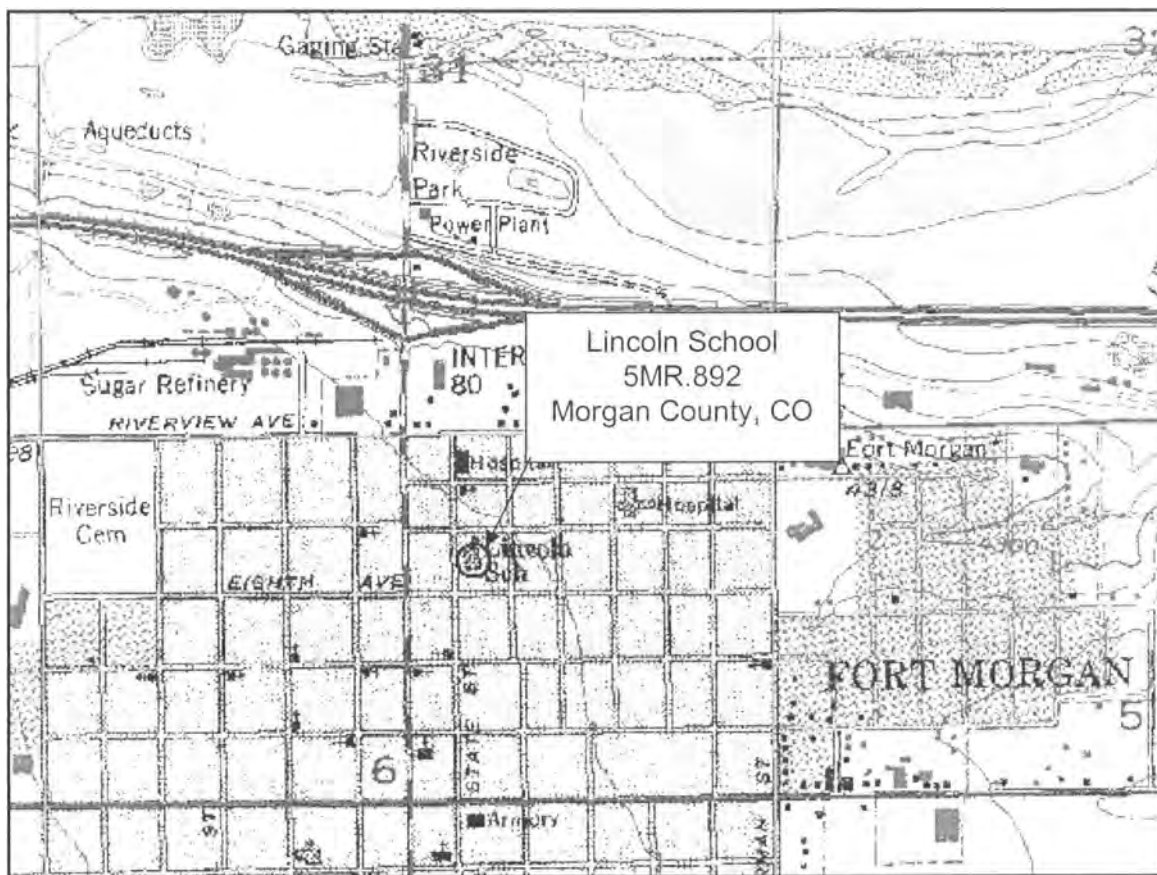
Lincoln School, Morgan County, Colorado

United States Department of the Interior
National Park Service

Section number 10 Page 16

USGS TOPOGRAPHIC MAP
Fort Morgan Quadrangle, Colorado
7.5 Minute Series

UTMS: 13; 602 107mE / 4456 949 mN
PLSS: 6th PM, T3N, R57W, Sec. 6, NE¼ SW¼ NW¼ NE¼
Elevation: 4322 feet



National Register of Historic Places Continuation Sheet

United States Department of the Interior
National Park Service

Lincoln School, Morgan County, Colorado

Section number ___ Page 17

PHOTOGRAPH LOG

The following information pertains to photographs 1-24:

Property Name: Lincoln School
 Location: Morgan County, Colorado
 Photographer: Lyn Deal
 Date of Photographs: August 19, 2008
 Negatives: TIFF images on file with the National Register, Washington, D. C.

Photo No.	Photographic Information
1	Front, view to east
2	Close up of front entrance, view to east
3	Front, view to northeast
4	Front and south side, view to northeast
5	Front entrance ramp, view to north
6	Close up of brick design, view to north
7	South side, view to northeast
8	South side, view to north
9	Back, view to northwest
10	Back, view to northwest
11	Back, view to southwest
12	North side, view to southeast
13	North side, view to west
14	Front and north side, view to southeast
15	Front, view to east
16	Front, view to northeast
17	Interior hallway, view to east
18	Interior hallway, view to west
19	Interior hallway, view to west
20	Classroom, view to northeast
21	Classroom, view to southwest
22	Classroom, view to northwest
23	Office, view to south
24	Library, view to north

PHOTOGRAPH LOG – HISTORIC

No.	Photographic Information
H1	Lincoln School, ca. 1915. Postcard. Lincoln School Collection, Fort Morgan School Board, Fort Morgan, Colorado
H2	1942 School Photograph. Jerry Wolford private collection, Fort Morgan, Colorado.
H3	1942 School Photograph. Jerry Wolford private collection, Fort Morgan, Colorado.
H4	1931 Sanborn Fire Insurance Company Map. Denver Public Library, Western History Department., Denver, Colorado.

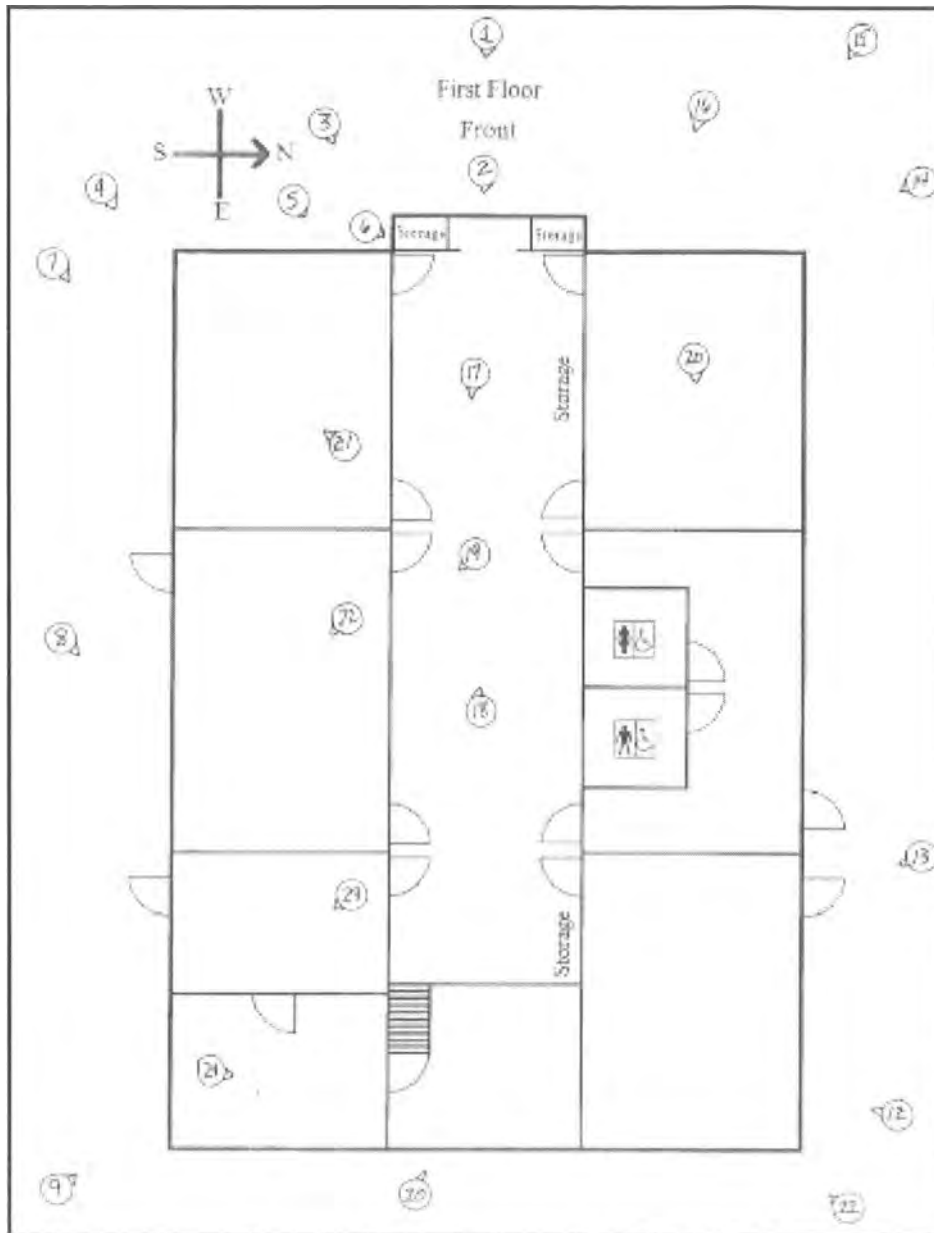
National Register of Historic Places Continuation Sheet

United States Department of the Interior
National Park Service

Lincoln School, Morgan County, Colorado

Section number ___ Page 18

Photo Directions

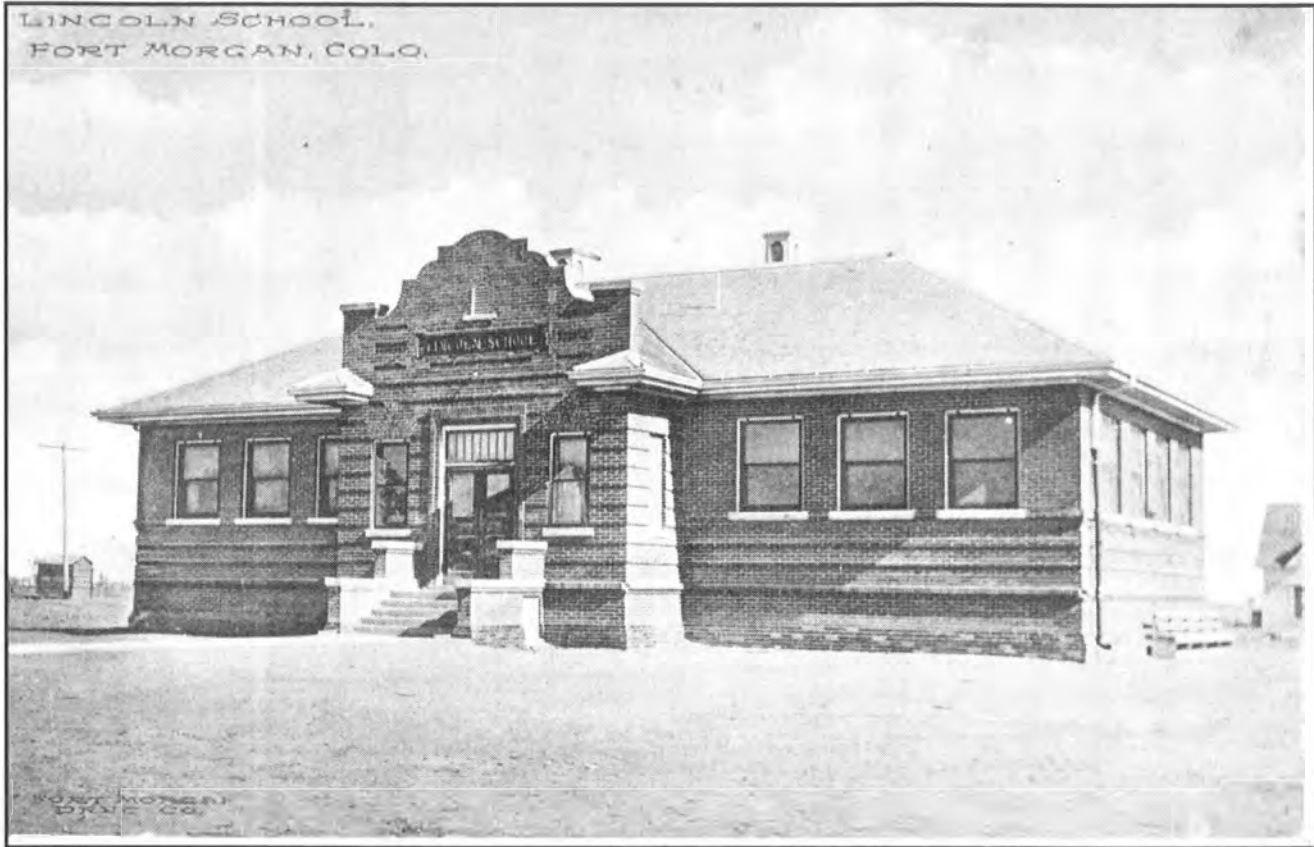


National Register of Historic Places Continuation Sheet

United States Department of the Interior
National Park Service

Lincoln School, Morgan County, Colorado

Section number ___ Page 19



H1



H2



H3

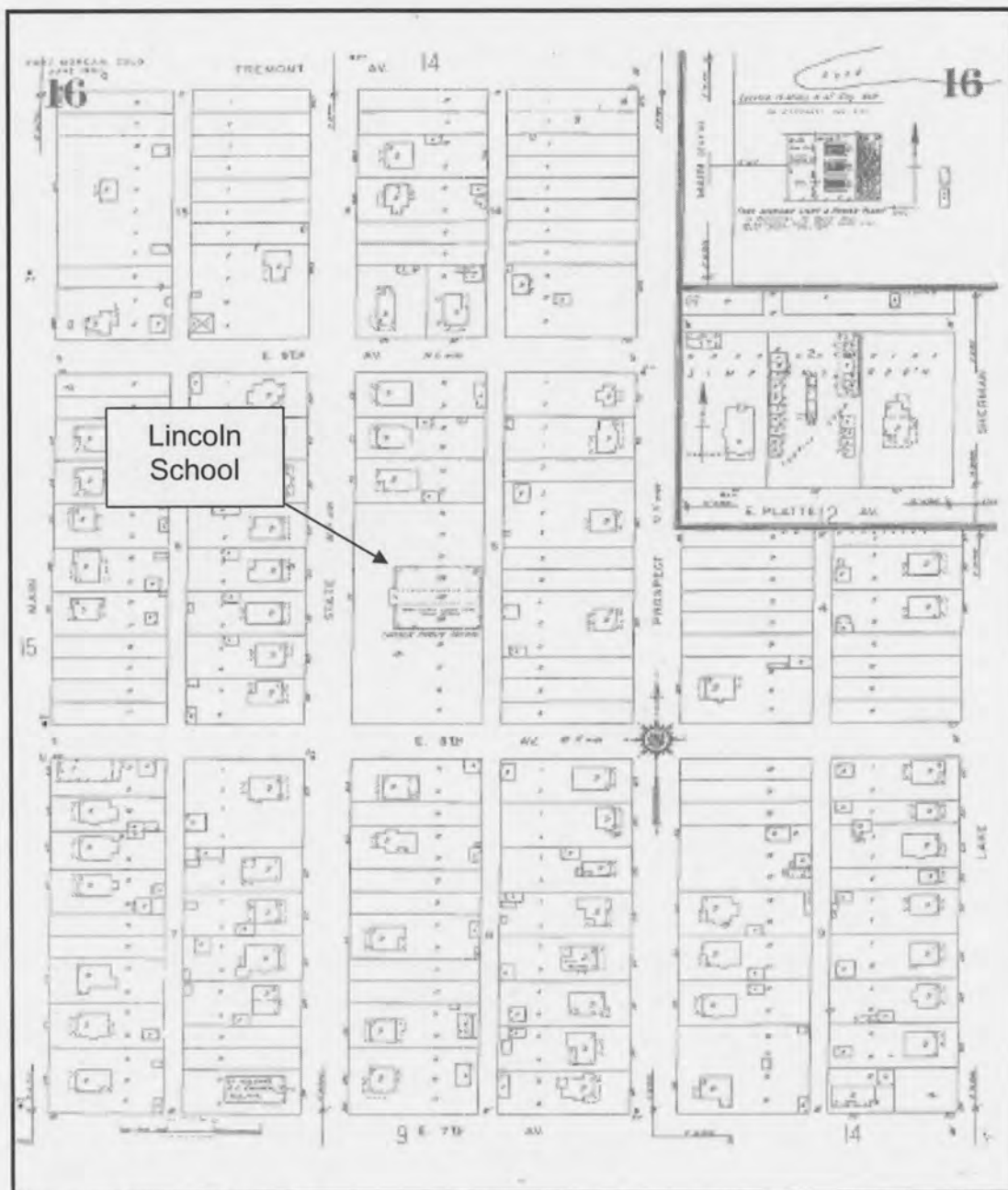
National Register of Historic Places Continuation Sheet

United States Department of the Interior
National Park Service

Lincoln School, Morgan County, Colorado

Section number ___ Page 20

1931 Sanborn Insurance Company Map of Fort Morgan, Colorado – H4



UNITED STATES DEPARTMENT OF THE INTERIOR
NATIONAL PARK SERVICE

NATIONAL REGISTER OF HISTORIC PLACES
EVALUATION/RETURN SHEET

REQUESTED ACTION: NOMINATION

PROPERTY NAME: Lincoln School

MULTIPLE NAME:

STATE & COUNTY: COLORADO, Morgan

DATE RECEIVED: 3/19/10 DATE OF PENDING LIST: 4/07/10
DATE OF 16TH DAY: 4/22/10 DATE OF 45TH DAY: 5/03/10
DATE OF WEEKLY LIST:

REFERENCE NUMBER: 10000216

REASONS FOR REVIEW:

APPEAL: N DATA PROBLEM: N LANDSCAPE: N LESS THAN 50 YEARS: N
OTHER: N PDIL: N PERIOD: N PROGRAM UNAPPROVED: N
REQUEST: N SAMPLE: N SLR DRAFT: N NATIONAL: N

COMMENT WAIVER: N

ACCEPT RETURN REJECT 4.27.10 DATE

ABSTRACT/SUMMARY COMMENTS:

Entered in
The National Register
of
Historic Places

RECOM./CRITERIA _____

REVIEWER _____ DISCIPLINE _____

TELEPHONE _____ DATE _____

DOCUMENTATION see attached comments Y/N see attached SLR Y/N

If a nomination is returned to the nominating authority, the nomination is no longer under consideration by the NPS.



LINCOLN SCHOOL

Lincoln School
Morgan County,

5MR.892

#1

Vol 1, A1362, 03/11/10

Colorado

6476815, CO_Morgan County_Lincoln School

A black and white photograph of the Lincoln School building. The building is a single-story brick structure with a prominent arched entrance. Above the entrance, a sign reads "LINCOLN SCHOOL". The entrance is reached via a concrete walkway and a set of stairs with a metal railing. There are windows on either side of the entrance. The building has a classic, somewhat ornate design with decorative elements around the archway.

LINCOLN SCHOOL

#2
Lincoln School
Morgan County, Colorado
5 N.R. 892

G476815, CO_Morgan County_Lincoln School

Wolf, A1362, 03/11/10



LINCOLN SCHOOL

#3

Lincoln School
Morgan County, Colorado
5MR. 892

Vol f. A1362, 03/11/10

6476815. CO_Morgan County_Lincoln School



ADVANCE

#4

Lincoln School
Morgan County, Colorado

5MR.892

Wolf, H1362, 03/11/10

G476815, CO_Morgan County_Lincoln School



LINCOLN SCHOOL

#5

Lincoln School
Morgan County, Colorado
5MR. 892

G476815. CO_Morgan County_Lincoln School

Wolf, A1362, 03/11/10



#6
Lincoln School
Morgan County, Colorado
5MR.892

G476815. CO_Morgan County_Lincoln School

Wolf, A1362, 03/11/10



ADVANCE

#7

Lincoln School
Morgan County, Colorado

Wolf, A1362, 03/11/10

5MR. 892

G476815.CO_Morgan County_Lincoln School



#8

Lincoln School
Morgan County, Colorado
5 MR. 892

Wolf, A1362, 03/11/10

G476815, CO_Morgan County_Lincoln School

PUBLIC
ENTRANCE
WEST DOOR
ONLY

PUBLIC
ENTRANCE
EAST DOOR
ONLY



#9

Lincoln School
Morgan County, Colorado
5MR. 892

Wolf, A1362, 03/11/10

G476815, CO Morgan County Lincoln School



#10

Lincoln School
Morgan County, Colorado
5MR, 892

G476815, CO_Morgan County_Lincoln School

Wolf, A1362, 03/11/10



G476815: CO_Morgan County_Lincoln School

Wolf, A1362, 03/11/10

Colorado

#11

Lincoln School
Morgan County,
5MR.892



#12

Lincoln School
Morgan County, Colorado
SMR. 892

G476815, CO_Morgan County_Lincoln School

Wolf, A1362, 03/11/10



#13

Lincoln School
Morgan County,

5MR.892

Wolf, A1362, 03/11/10

Colorado

G476815, CO Morgan County Lincoln School



LINCOLN SCHOOL

#14
Lincoln School
Morgan County,
5MR.892

Wolf, A1362, 03/11/10

Colorado

G476815, CO_Morgan County_Lincoln School



#15
Lincoln School
Morgan County, Colorado

5MR.892

Moif, A1362, 03/11/10

G476815, CO_Morgan County_Lincoln School



LINCOLN SCHOOL

#16 Lincoln School
Morgan County, Colorado

5MR.892

MOI f. A1362, 03/11/10

G476815, CO_Morgan County_Lincoln School



#17

Lincoln School
Morgan County, Colorado
5MR.892

Wolf, A1362, 03/11/10

G476815, CO_Morgan County_Lincoln School



#18

Lincoln School
Morgan County,
5MR.892

Wolf, A1362, 03/11/10

Colorado

G476815, CO_Morgan County_Lincoln School



#19

Lincoln School
Morgan County, Colorado
5MR.892

Wolff, A1362, 03/11/10

G476815, CO_Morgan County_Lincoln School



Welcome
to the
[unclear] School

#20

Lincoln School

Morgan County, Colorado

5 MR. 892

Wolf, A1362, 03/11/10

G476815, CO Morgan County Lincoln School



#21

Lincoln School
Morgan County, Colorado
5MR.892

Wolf, A1362, 03/11/10

G476815, CO_Morgan County_Lincoln School



#22
Lincoln School
Morgan County,
5MR.892

Vol 1 f, A1362, 03/11/10

Colorado

6476815, CO_Morgan County_Lincoln School



#23

Lincoln School
Morgan County,
5MR. 892

Wolf, A1362, 03/11/10

Colorado

G476815, CD_Morgan County_Lincoln School



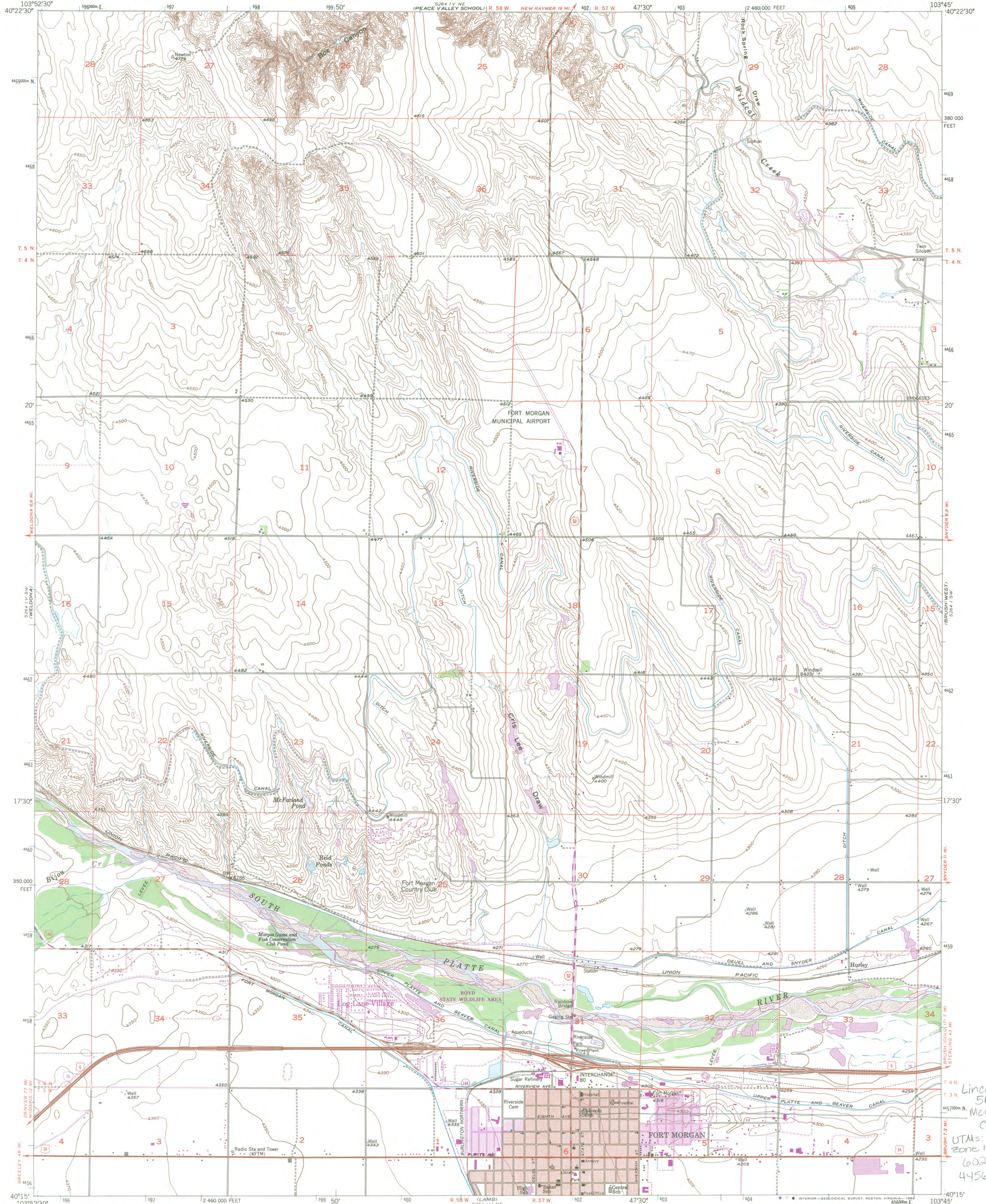
#24

Lincoln School
Morgan County,
S.M.R. 892

Wolf, A1362, 03/11/10

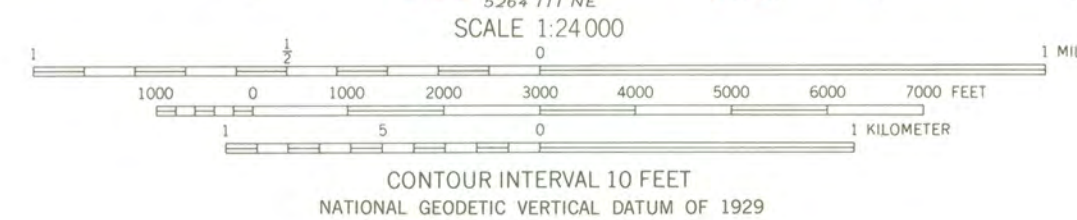
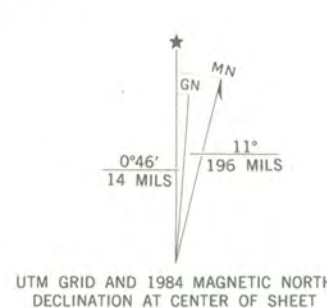
Colorado

G476815, CO_Morgan County_Lincoln School



Lincoln School
5m.r. 892
Morgan County,
Colorado
UTMs:
zone 13;
602 107 mE.;
4456 949 mN

Mapped, edited, and published by the Geological Survey as part of the Department of the Interior program for the development of the Missouri River Basin Control by USGS and NOS/NOAA
Topography by photogrammetric methods from aerial photographs taken 1948-1949 and planimeter surveys 1951 Limited revision 1971
Polyconic projection. 10,000-foot grid ticks based on Colorado coordinate system, north zone
1000-meter Universal Transverse Mercator grid ticks, zone 13, shown in blue
1927 North American Datum
To place on the predicted North American Datum 1983 move the projection lines 5 meters north and 44 meters east as shown by dashed corner ticks
Red tint indicates areas in which only landmark buildings are shown
There may be private inholdings within the boundaries of the National or State reservations shown on this map



ROAD CLASSIFICATION

Primary highway, hard surface	Light-duty road, hard or improved surface
Secondary highway, hard surface	Unimproved road
Interstate Route	U.S. Route
	State Route

THIS MAP COMPLIES WITH NATIONAL MAP ACCURACY STANDARDS
FOR SALE BY U. S. GEOLOGICAL SURVEY, DENVER, COLORADO 80225, OR RESTON, VIRGINIA 22092
A FOLDER DESCRIBING TOPOGRAPHIC MAPS AND SYMBOLS IS AVAILABLE ON REQUEST

Revisions shown in purple and woodland compiled from aerial photographs taken 1982 and other sources
This information not field checked. Map edited 1984
Purple tint indicates extension of urban areas

FORT MORGAN, COLO.
40103-C7-1F-024
1971
PHOTOREVISED 1984
DMA 5264 IV SE—SERIES V877



October 29, 2009

Dear Historic Preservation Board,

The City of Fort Morgan is proud to support the preservation efforts of Mr. James Graff, owner of the School for the Performing Arts. The 1910 Lincoln School building has been vacant in a residential neighborhood and was becoming an eyesore.

Mr. Graff and his wife and extended family are talented musicians who have had the vision to transform this little school building into a performing art school. This project has been well supported by the community and it will be nice to restore and reuse a unique school building to add to our collection of National Register properties.

Thank you for your consideration,

Jack Darnell,
Mayor, City of Fort Morgan

Lyn Deal,
Council Woman

RECEIVED

NOV 04 2009




HISTORY *Colorado*



March 12, 2010

Carol Shull
Acting Keeper of the National Register
National Register of Historic Places
1201 Eye "I" Street, N.W. 8th Floor (MS 2280)
Washington, D.C. 20005-5905

Dear Ms. Shull:

We are pleased to submit for your review the enclosed National Register of Historic Places nomination for the Lincoln School, Morgan County, Colorado (5MR.892).

The State Review Board reviewed the nomination at its meeting on February 19, 2010. The board voted unanimously to recommend to the State Historic Preservation Officer that the property met the criteria for listing in the National Register.

We look forward to the formal listing of this property. If you have any questions, please do not hesitate to contact me.

Sincerely,

Heather Peterson
National & State Register Historian
Office of Archaeology and Historic Preservation
Colorado Historical Society
(303) 866-4684
(303) 866-2041 (fax)
heather.peterson@chs.state.co.us

Enclosures
Registration forms
USGS map
Photographs
CD-R *x2*
Support Letter