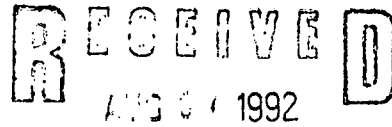


1203

United States Department of the Interior  
National Park Service



NATIONAL REGISTER OF HISTORIC PLACES  
REGISTRATION FORM

NATIONAL  
REGISTER

1. Name of Property

historic name: Bergman High School

other name/site number: BO0073

2. Location

street & number: County Road 48

not for publication: N/A

city/town: Bergman

vicinity: N/A

state: AR county: Boone code: AR 009 zip code: 72615

3. Classification

Ownership of Property: Public-local

Category of Property: Building

Number of Resources within Property:

Contributing	Noncontributing
<u>1</u>	<u>      </u> buildings
<u>      </u>	<u>      </u> sites
<u>      </u>	<u>      </u> structures
<u>      </u>	<u>      </u> objects
<u>1</u>	<u>0</u> Total

Number of contributing resources previously listed in the National Register: N/A

Name of related multiple property listing: Public Schools in the Arkansas Ozarks, 1920-1940

=====

#### 4. State/Federal Agency Certification

=====

As the designated authority under the National Historic Preservation Act of 1986, as amended, I hereby certify that this X nomination \_\_\_\_\_ request for determination of eligibility meets the documentation standards for registering properties in the National Register of Historic Places and meets the procedural and professional requirements set forth in 36 CFR Part 60. In my opinion, the property X meets \_\_\_\_\_ does not meet the National Register Criteria. \_\_\_\_\_ See continuation sheet.

Cathryn A. Byrd  
Signature of certifying official

8-2-92  
Date

Arkansas Historic Preservation Program  
State or Federal agency and bureau

In my opinion, the property \_\_\_\_\_ meets \_\_\_\_\_ does not meet the National Register criteria. \_\_\_\_\_ See continuation sheet.

\_\_\_\_\_  
Signature of commenting or other official

\_\_\_\_\_  
Date

\_\_\_\_\_  
State or Federal agency and bureau

=====

#### 5. National Park Service Certification

=====

I, hereby certify that this property is:

entered in the  
~~National Register~~

- ☒ entered in the National Register  
\_\_\_\_\_ See continuation sheet.  
☐ determined eligible for the  
National Register  
\_\_\_\_\_ See continuation sheet.  
☐ determined not eligible for the  
National Register  
☐ removed from the National Register  
☐ other (explain): \_\_\_\_\_

Delores Byrd 9/10/92

fu Signature of Keeper Date  
of Action

=====

#### 6. Function or Use

=====

Historic: EDUCATION

Sub: School

Current: EDUCATION

Sub: School

=====

## 7. Description

=====

Architectural Classification:

Craftsman  
\_\_\_\_\_  
\_\_\_\_\_

Other Description: N/A

Materials: foundation Concrete roof Asphalt  
walls Brick other N/A  
\_\_\_\_\_

Describe present and historic physical appearance. X See continuation sheet.

=====

## 8. Statement of Significance

=====

Certifying official has considered the significance of this property in relation to other properties: Locally.

Applicable National Register Criteria: A

Criteria Considerations (Exceptions): N/A

Areas of Significance: EDUCATION  
\_\_\_\_\_  
\_\_\_\_\_  
\_\_\_\_\_  
\_\_\_\_\_  
\_\_\_\_\_

Period(s) of Significance: 1930-1940

Significant Dates: N/A

Significant Person(s): N/A  
\_\_\_\_\_

Cultural Affiliation: N/A

Architect/Builder: Bacus, C. V.  
\_\_\_\_\_  
\_\_\_\_\_

State significance of property, and justify criteria, criteria considerations, and areas and periods of significance noted above.  
X See continuation sheet.

**United States Department of the Interior  
National Park Service****National Register of Historic Places  
Continuation Sheet**Section number 7 Page 1

---

**Summary**

The Bergman High School is a single story, brick masonry classroom building designed in a vernacular interpretation of the Craftsman style. Its symmetrical plan is built around a "T", with the ends of the top or crossing piece consisting of perpendicular, hipped roof projections adjacent to the front entrances, the crossing piece being the gable roof piece in between, and the bottom of the "T" being formed by the gable roof ell that projects from the center of the rear of the front section. Augmenting the plan are the two projecting, square entrance bays on the front and the two projecting, square entrance bays on the south elevation of the rear ell. The combination deck-on-hip and gable roofs are covered with asphalt shingles, the walls are brick, and the structure rests upon a continuous cast concrete foundation.

**Elaboration**

The Bergman High School is a single story, brick masonry classroom building designed in a vernacular interpretation of the Craftsman style. Its symmetrical plan is built around a "T", with the ends of the top or crossing piece consisting of perpendicular, hipped roof projections adjacent to the front entrances, the crossing piece being the gable roof piece in between, and the bottom of the "T" being formed by the gable roof ell that projects from the center of the rear of the front section. Augmenting the plan are the two projecting, square entrance bays on the front and the two projecting, square entrance bays on the south elevation of the rear ell. The combination deck-on-hip and gable roofs are covered with asphalt shingles, the walls are brick, and the structure rests upon a continuous cast concrete foundation.

The eastern or front elevation features a balanced and almost symmetrical organization of its principle elements. The two square, flat-roofed concrete entrance bays project from the facade at the point where the slightly-projecting end bays intersect the central, connecting section. The entrance bays are entered via arched openings facing the front and inside of the facade. The walls of the end bays are each lighted with two window bays containing three windows each. The wall between the entrances is fenestrated with a group of two windows to the east and two more groups of three windows each to the west. The western elevation opposite is composed of the rear walls of the front section flanking the end gable of the central ell. The front section's rear walls are each lighted with two sets of three windows each; the gable end is punctuated by a large, rectangular vent in the gable peak and two asymmetrically-placed, single-leaf entrances with transoms in the wall below.

**United States Department of the Interior  
National Park Service**

**National Register of Historic Places  
Continuation Sheet**

Section number 7 Page 2

---

The northern elevation is lighted with two pair of windows in the end of the front section and three sets of five windows each in the side wall of the rear ell. The southern elevation opposite is accessed via the two square, flat-roofed, projecting concrete entrance bays -- each of which features a square-headed opening with a double-leaf entry behind -- and lighted with a single pair of windows to the west of the western entry and four more pairs of windows in the wall between the entrances. Two more pair of windows are symmetrically-placed within the end of the front section to the east.

The significant exterior details are limited to the four square, concrete entrance bays, the triangular, louvered roof vents and the exposed rafters that adorn the cornice.

The only significant alteration to the Bergman High School has been the replacement of all of its original wood sash windows with aluminum horizontal windows. The building is in good condition.

United States Department of the Interior  
National Park ServiceNational Register of Historic Places  
Continuation SheetSection number 8 Page 1**Bergman High School**

The "Roaring Twenties" were a period of prosperity and hopefulness for the future, even in the rural Ozarks. Automobiles, radios, and buying on credit all came relatively late to the region, and the late summer of 1930 was a time of uncertainty as residents of Boone County waited to see what the economic ramifications of the 1929 stock market crash would mean for north Arkansas.

It was in this economic climate of doubt and apprehension that several small districts were consolidated to create Special School District #8 in Bergman in the fall of 1929. Local residents were enthusiastic about the prospects for the new school as the new decade began; the Harrison Daily Times eagerly predicted that Bergman "will be a school that will be the pride of the entire community."<sup>1</sup> A full four-year course of study was planned and numerous students from nearby schools declared they would attend the Bergman high school when it opened. C. V. Bacus was contracted to construct a new ten-room brick school building, "a building that everyone should be just proud,"<sup>2</sup> for the term that would begin in the fall.

W. F. Slagle, the school superintendent, led the dedication ceremonies for the new Bergman School on September 14, 1930, an all-day community affair featuring a devotional service, music, an accordion player from Alpena, and lunch on the school grounds for the estimated crowd of 700. Classes began on Monday, September 22, with a total of about 300 students, 54 of whom enrolled in the high school. Most of the twenty-five boys enrolled in the high school participated in the two vocational agriculture classes that were organized to qualify the school for Smith-Hughes assistance; due to the region's topography, emphasis was placed initially on livestock production over field crops, and the milk and egg production programs were especially popular.<sup>3</sup>

The Bergman High School, constructed during the period covered by the historic context *The Evolution of the Public School System in the Arkansas Ozarks, 1920-1940*, is a representative example of a brick masonry school building constructed for a rural school district. Its use during this period as a local school building clearly identifies it with this historic context

---

<sup>1</sup>Harrison Daily Times, February 11, 1930.

<sup>2</sup>Harrison Daily Times, August 22, 1930.

<sup>3</sup>Harrison Daily Times, August 22, 1930; September 17, 1930; September 25, 1930.

**United States Department of the Interior**  
**National Park Service**

# **National Register of Historic Places**

## **Continuation Sheet**

Section number 8 Page 2

---

and with this property type. It is significant locally under Criterion A through its direct associations with the history of the evolution of the public school system in the Ozark Mountain region of the state during this period.



=====

## 9. Major Bibliographical References

=====

See "Public Schools in the Arkansas Ozarks, 1920-1940" Multiple Property Form, Section H.

\_\_\_ See continuation sheet.

Previous documentation on file (NPS):

- \_ preliminary determination of individual listing (36 CFR 67) has been requested.
- \_ previously listed in the National Register
- \_ previously determined eligible by the National Register
- \_ designated a National Historic Landmark
- \_ recorded by Historic American Buildings Survey # \_\_\_\_\_
- \_ recorded by Historic American Engineering Record # \_\_\_\_\_

Primary Location of Additional Data:

- X State historic preservation office
- \_ Other state agency
- \_ Federal agency
- \_ Local government
- \_ University
- \_ Other -- Specify Repository: \_\_\_\_\_

=====

## 10. Geographical Data

=====

Acreage of Property: Less than one \_\_\_\_\_

UTM References: Zone Easting Northing      Zone Easting Northing

A	<u>15</u>	<u>498460</u>	<u>4018500</u>	B	___	___	___
C	___	___	___	D	___	___	___

\_\_\_ See continuation sheet.

Verbal Boundary Description: \_\_\_ See continuation sheet.

Beginning at a point formed by the intersection of a line running parallel with the building's southern elevation and located approximately 25 feet to the south thereof with a perpendicular line running parallel with the building's eastern elevation and located approximately 50 feet to the east thereof (a point located approximately 100 feet north of the northern edge of County Road 48 and 600 feet west of the western edge of State Highway 7), proceed northerly along said line for a distance of approximately 200 feet to its intersection with a perpendicular line running parallel to the building's northern elevation; thence proceed westerly along said line for a distance of approximately 200 feet to its intersection with a line running parallel to the building's western elevation; thence proceed southerly along said line for a distance of approximately 200 feet to its intersection with a perpendicular line running parallel with the building's southern elevation; thence proceed easterly along said line for a distance of approximately 200 feet to the point of beginning.

Boundary Justification: \_\_\_ See continuation sheet.

This boundary includes both the historic resource and all the surrounding



property known to have been historically associated therewith that retains its integrity.

=====

**11. Form Prepared By**

=====

Name/Title: Kenneth Story, National Register Coordinator

Organization: Arkansas Historic Preservation Program Date: July 16, 1992

Street & Number: 225 E. Markham, Suite 300 Telephone: (501) 324-9346

City or Town: Little Rock State: AR ZIP: 72201

United States Department of the Interior  
National Park ServiceNational Register of Historic Places  
Continuation Sheet

Section number \_\_\_\_\_ Page \_\_\_\_\_

Public Schools in the Ozarks MPS  
ARKANSAS

Date Listed

COVER	Substantive Review	Date Listed
92001115	Aggie Hall	9/4/92
92001113	Aggie Workshop	9/4/92
92001098	Agriculture Building--University of Arkansas, Fayetteville	9/4/92
92001125	Alco School	9/4/92
92001203	Bergman High School	9/10/92
92001214	Berryville Agriculture Building	9/10/92
92001215	Berryville Gymnasium	9/10/92
92001178	Boswell School Substantive Review	9/4/92
92001112	Bruno School Building	9/4/92
92001128	Buford School Building Substantive Review	9/4/92
92001099	Business Administration Building--University of Arkansas, Fayetteville	9/4/92
92001194	Cafeteria Building--Cleveland School	9/10/92
92001200	Calico Rock Home Economics Building	9/10/92
92001213	Caraway Hall--Arkansas Tech University	9/10/92
92001217	Cedarville School Building	9/10/92
92001206	Center Valley Well House	9/10/92
92001100	Chemistry Building--University of Arkansas, Fayetteville	9/4/92
92001101	Chi Omega Greek Theatre--University of Arkansas, Fayetteville	9/4/92
92001202	Clarksville High School Building No. 1	9/10/92
92001123	Coal Gap School	9/4/92
92001122	Damascus Gymnasium	9/4/92
92001118	Dodson Memorial Building	9/4/92
92001121	Durham School	9/4/92
92001192	Enterprise School	9/10/92
92001110	Eros School Building	9/4/92
92001205	Everton School	9/10/92
92001116	Fairview School Building	9/4/92
92001120	Fishback School	9/4/92
92001212	Girls' Domestic Science and Arts Building--Arkansas Tech University Substantive Review	9/4/92
92001196	Guy High School Gymnasium	9/10/92
92001197	Guy Home Economics Building	9/10/92
92001114	Hirst--Mathew Hall	9/4/92
92001102	Home Economics Building--University of Arkansas, Fayetteville	9/4/92
92001210	Hughes Hall--Arkansas Tech University Substantive Review	9/4/92
92001106	Jamestown School	9/4/92

UNITED STATES DEPARTMENT OF THE INTERIOR  
NATIONAL PARK SERVICE

NATIONAL REGISTER OF HISTORIC PLACES  
EVALUATION/RETURN SHEET

REQUESTED ACTION: NOMINATION

PROPERTY NAME: Bergman High School

MULTIPLE NAME: Public Schools in the Ozarks MPS

STATE & COUNTY: ARKANSAS, Boone

DATE RECEIVED: 8/07/92 DATE OF PENDING LIST: 8/21/92  
DATE OF 16TH DAY: 9/06/92 DATE OF 45TH DAY: 9/21/92  
DATE OF WEEKLY LIST:

REFERENCE NUMBER: 92001203

NOMINATOR: STATE

REASONS FOR REVIEW:

APPEAL: N DATA PROBLEM: N LANDSCAPE: N LESS THAN 50 YEARS: N  
OTHER: N PDIL: N PERIOD: N PROGRAM UNAPPROVED: N  
REQUEST: N SAMPLE: N SLR DRAFT: N NATIONAL: N

COMMENT WAIVER: N

☒ ACCEPT ☐ RETURN ☐ REJECT 9/10/92 DATE

Entered in the  
National Register

ABSTRACT/SUMMARY COMMENTS:

RECOM./CRITERIA \_\_\_\_\_  
REVIEWER \_\_\_\_\_  
DISCIPLINE \_\_\_\_\_  
DATE \_\_\_\_\_

DOCUMENTATION see attached comments Y/N see attached SLR Y/N

CLASSIFICATION

\_\_\_count \_\_\_resource type

STATE/FEDERAL AGENCY CERTIFICATION

FUNCTION

\_\_\_historic \_\_\_current

DESCRIPTION

\_\_\_architectural classification

\_\_\_materials

\_\_\_descriptive text

SIGNIFICANCE

Period Areas of Significance--Check and justify below

Specific dates

Builder/Architect

Statement of Significance (in one paragraph)

\_\_\_summary paragraph

\_\_\_completeness

\_\_\_clarity

\_\_\_applicable criteria

\_\_\_justification of areas checked

\_\_\_relating significance to the resource

\_\_\_context

\_\_\_relationship of integrity to significance

\_\_\_justification of exception

\_\_\_other

BIBLIOGRAPHY

GEOGRAPHICAL DATA

\_\_\_acreage

\_\_\_verbal boundary description

\_\_\_UTMs

\_\_\_boundary justification

ACCOMPANYING DOCUMENTATION/PRESENTATION

\_\_\_sketch maps

\_\_\_USGS maps

\_\_\_photographs

\_\_\_presentation

OTHER COMMENTS

Questions concerning this nomination may be directed to

Phone

Signed

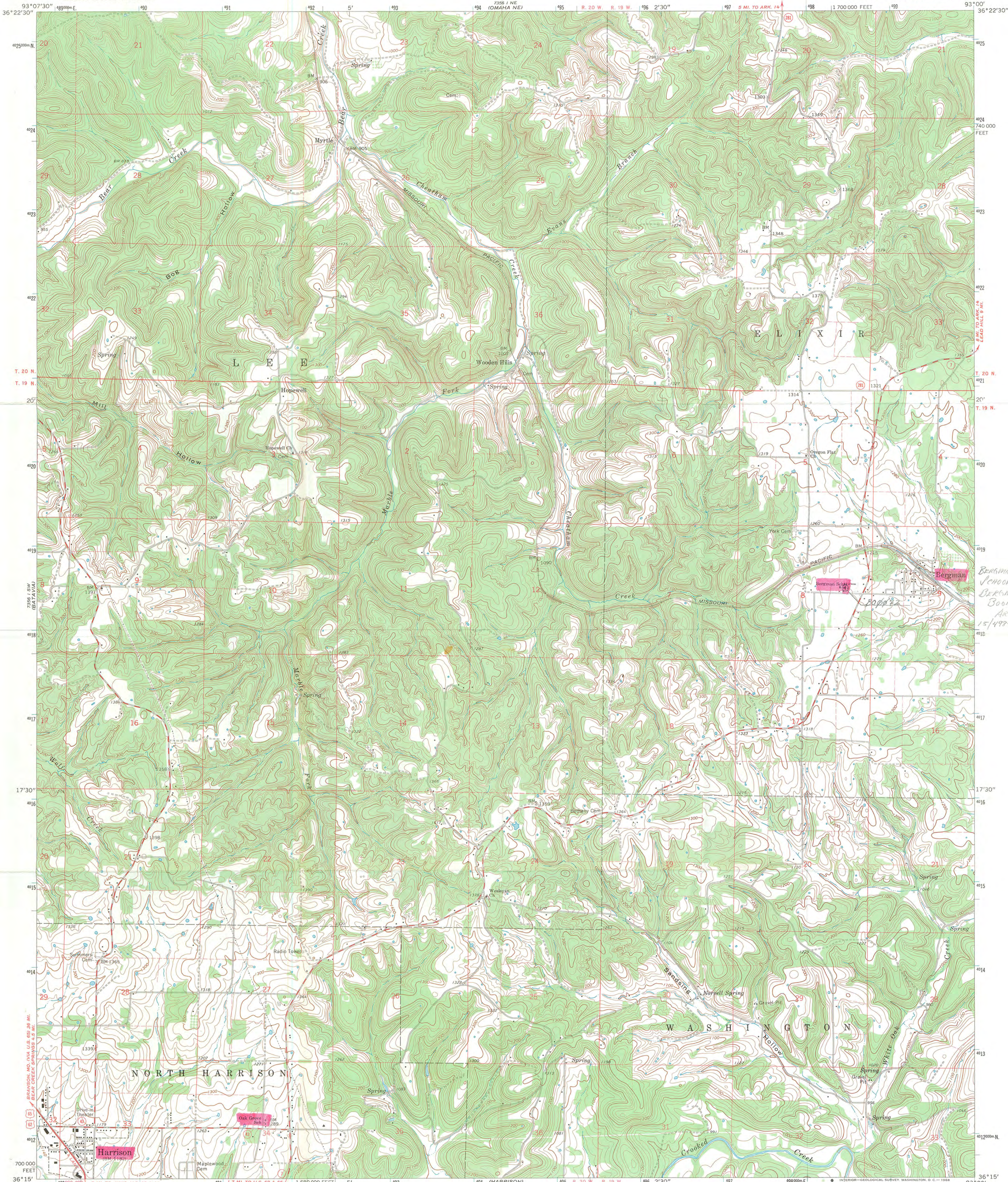
Date





BERGMAN HIGH SCHOOL  
BERGMAN, BOONE CO., ARKANSAS  
PHOTOGRAPHED BY V. DEROSE  
MARCH, 1990  
NEGATIVE ON FILE AT ANPP  
VIEW FROM EAST

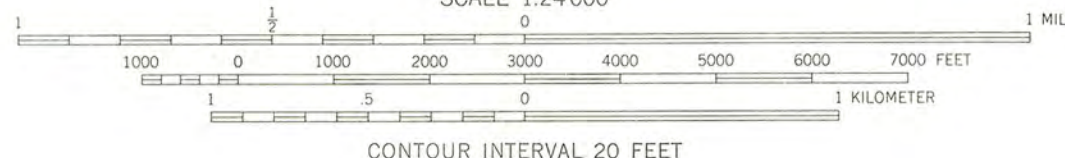




BERGMAN HIGH  
SCHOOL (806073)  
BERGMAN,  
BOONE CO.,  
ARKANSAS  
15/498460/4018500

Mapped, edited, and published by the Geological Survey  
Control by USGS and USC&GS  
Topography by photogrammetric methods from aerial  
photographs taken 1964. Field checked 1966-67  
Polyconic projection. 1927 North American datum  
10,000-foot grid based on Arkansas coordinate system, north zone  
1000-meter Universal Transverse Mercator grid ticks,  
zone 15, shown in blue  
Fine red dashed lines indicate selected fence and field lines where  
generally visible on aerial photographs. This information is unchecked

UTM GRID AND 1967 MAGNETIC NORTH  
DECLINATION AT CENTER OF SHEET



THIS MAP COMPLIES WITH NATIONAL MAP ACCURACY STANDARDS  
FOR SALE BY U.S. GEOLOGICAL SURVEY, DENVER, COLORADO 80225, OR WASHINGTON, D. C. 20242  
AND BY THE ARKANSAS GEOLOGICAL COMMISSION, LITTLE ROCK, ARKANSAS 72201  
A FOLDER DESCRIBING TOPOGRAPHIC MAPS AND SYMBOLS IS AVAILABLE ON REQUEST



ROAD CLASSIFICATION  
Heavy-duty ——— Light-duty ———  
Medium-duty ——— Unimproved dirt ———  
U.S. Route ——— State Route ———

BERGMAN, ARK.  
N3615—W9300/7.5

1967

AMS 7356 I SE—SERIES V884