



HAMILTON PARK HISTORIC DISTRICT

JUL 10 1978

JERSEY CITY  
HUDSON COUNTY  
NEW JERSEY 034

JAN 25 1979

① 24 West HAMILTON PLACE

View: Northeast corner of PAUONIA AND  
West HAMILTON PLACE

29

Photographed by Oppenheimer, BRADY +  
Vogelstein. Negatives with O.B.U.

October, 1976.



JUL 10 1978

HAMILTON PARK Historic District

Jersey City

Hudson County New Jersey 034

② 264 9<sup>th</sup> Street

Vantage - South side of 9<sup>th</sup> Street, opposite,  
between ~~3<sup>rd</sup>~~ between Jersey Ave.  
and West Hamilton Place.

Photographed by Oppenheimer, Brady &  
Vogelstein: Negatives with O.B.U.

October, 1976.

JAN 25 1979



JUL 10 1978

# HAMILTON PARK HISTORIC DISTRICT

Jersey City Hudson County

New Jersey 034

③ 240 9<sup>th</sup> Street

35

VANTAGE: South side of 9<sup>th</sup> Street,  
opposite, between East Hamilton  
Place and Jersey Avenue

Photographed by Oppenheimer, BRADY &  
Vogelstein. Negatives with O.B.U.

October, 1976.

JAN 25 1979



HAMILTON PARK Historic District

JUL 10 1978

Jersey City

Hudson County New Jersey 034

④ 124 Erie Street

Vantage: West SIDE OF Erie Street, between  
7<sup>th</sup> AND 8<sup>th</sup> Street, south west  
SIDE OF Erie

31

Photographed by Oppenheimer, BRADY  
& Vogelstein. Negatives with O.B.U.

October, 1976.

JAN 25 1979





JUL 10 1978

HAMILTON PARK HISTORIC DISTRICT

Jersey City

Hudson County New Jersey 034

⑤ 214-222 7th Street

Vantage: South side of 7th Street,  
South east side of block between  
Grove and Erie Streets

31

Photographed by Oppenheimer, BRADY +  
Vogelstein. Negatives with. O.B.U.

October, 1976.

JAN 25 1979



JUL 10 1978

HAMILTON PARK

Jersey City

Hudson County

New Jersey 034

⑥ FRONT - 226 7<sup>th</sup> Street

REAR - 122 ERIC Street

Vantage: South west CORNER OF ERIC AND 7<sup>th</sup> Street

31

Photographed by Oppenheimer, BRADY  
& Vogelstein. Negatives with O.B.U.

October, 1976.

JAN 25 1979



HAMILTON PARK HISTORIC DISTRICT 10 1978

Jersey City

Hudson County

New Jersey 034

⑦ 242-242½ 7th Street

31

Vantage: South side of 7th Street,  
between Jersey and Erie  
Streets, opposite

Photographed by Oppenheimer, BRADY  
AND Vogelstein. Negatives with O.B.U.

October, 1976.

JAN 25 1979

Hanilton Park Historic District  
Honeywell



JUL 10 1978

HAMILTON PARK Historic District

Jersey City

Hudson County

New Jersey 034

Ⓑ 237 8<sup>th</sup> Street

Vantage: North side of 8<sup>th</sup> Street,  
between Erie and Jersey  
Avenues, opposite

29

Photographed by Oppenheimer, BRADY +  
Vogelstein. Negatives with O.B.V.

JAN 25 1979

October, 1976.





JUL 10 1978

HAMILTON PARK HISTORIC DISTRICT

Jersey City

Hudson County New Jersey 034

⑨ 243 8<sup>th</sup> Street

Vantage: North side of 8<sup>th</sup> Street,  
between Erie AND Jersey  
opposite

Photographed by Oppenheimer, BRADY &  
Vogelstein. Negatives with O.B.U.

October, 1976.

JAN 25 1979



JUL 10 1978

HAMILTON PARK Historic District

Jersey City

Hudson County New Jersey 034

⑩ 247 8<sup>th</sup> Street

Vantage: North side of 8<sup>th</sup> Street  
between, Erie and Jersey  
29 opposite

Photographed by Oppenheimer, BRADY +  
Vogelstein. Negatives with O.B.U.

October, 1976

JAN 25 1979



HAMILTON PARK HISTORIC DISTRICT <sup>JUL. 10 1978</sup>

Jersey City

Hudson County

New Jersey 034

(N) 271 + 273 8<sup>th</sup> Street

Vantage: North side of 8<sup>th</sup> Street,  
opposite between Jersey AND Coles.

Photographed by Oppenheimer, BRADY +  
Vogelstein. Negatives with O.B.O.

October, 1976.

JAN 25 1979



KENSINGTON

HAMILTON PARK Historic District JUL 10 1978

Jersey City

Hudson County

New Jersey 034

①28 287 8<sup>th</sup> Street

Vantage: North side of 8<sup>th</sup> Street,  
opposite, between Jersey  
Avenue AND West Hamilton  
Place.

28

Photographed by Oppenheimer, BRADY &  
Vogelstein. Negatives with O.B.U.

October, 1976.

JAN 25 1979





HAMILTON PARK HISTORIC DISTRICT  
Jersey City  
Hudson County  
New Jersey 034

JUL 10 1978

⑬ 297 + 297½ 8<sup>th</sup> Street

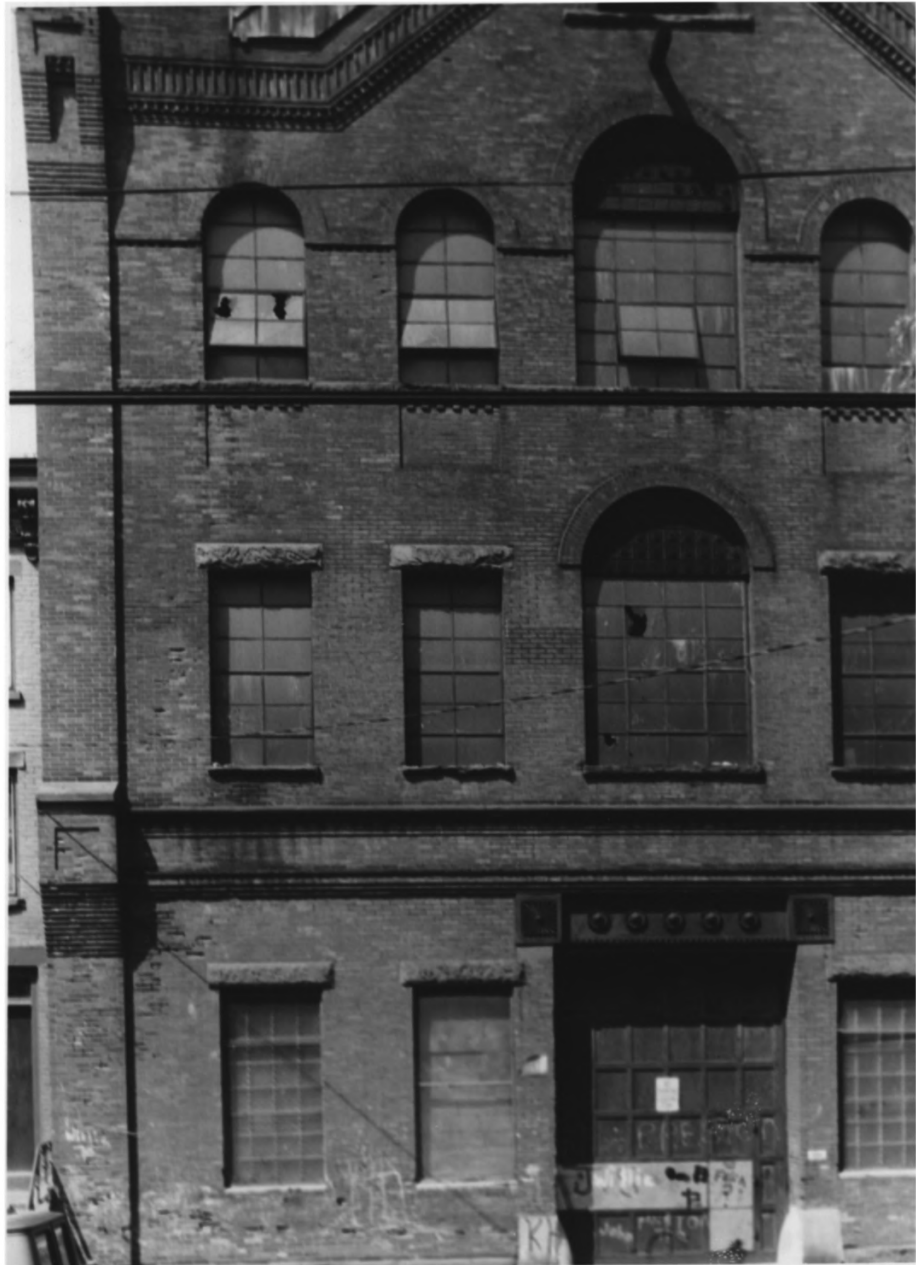
20

Vantage: North side of 8<sup>th</sup> Street,  
opposite, between West  
Hamilton Place and Coles

Photographed by Oppenheimer, Brady &  
Vogelstein. Negatives with O.B.U.

October, 1976 .

JAN 25 1979



HAMILTON PARK HISTORIC DISTRICT JUL 10 1978

Jersey City  
Hudson County  
New Jersey 034

⑭ 312 8<sup>th</sup> Street

Vantage: South side of 8<sup>th</sup> Street, between  
Coles and Monmouth, opposite.

Photographed by Oppenheimer, Brady &  
Vogelstein. Negatives with O.B.U.

October, 1976.

JAN 25 1979



JUL 10 1978

HAMILTON PARK HISTORIC DISTRICT

Jersey City

Hudson County

New Jersey 034

15 342-336 1/2 8th Street

Vantage: Southeast side of 8th Street,  
between Monmouth and Brunswick  
Streets.

Photographed by Oppenheimer, BRADY &  
Vogelstein. Negatives with O.B.U.

October, 1976.

JAN 25 1979



HAMILTON Park Historic District JUL 10 1978

Jersey City

Hudson County

New Jersey 034

①6 333-341 8th Street

VANTAGE: Northeast side of 8th Street,  
between Monmouth and Brunswick  
Streets

29

Photographed by Oppenheimer, BRADY &  
Vogelstein. Negatives with O.B.U.

October, 1976.

JAN 25 1979





JUL 10 1978

HAMILTON PARK Historic District

Jersey City  
Hudson County  
New Jersey

⑰ 357 AND 359 8<sup>th</sup> Street

Vantage: North side of 8<sup>th</sup> Street, opposite,  
between Monmouth and Brunswick

29

Photographed by Oppenheimer, BRADY  
& Vogelstein. Negatives with O.B.U.

October, 1976.

JUL 25 1978



JUL 10 1978

HAMILTON PARK HISTORIC DISTRICT  
Jersey City  
Hudson County  
New Jersey 034

① 357-363 8<sup>th</sup> Street

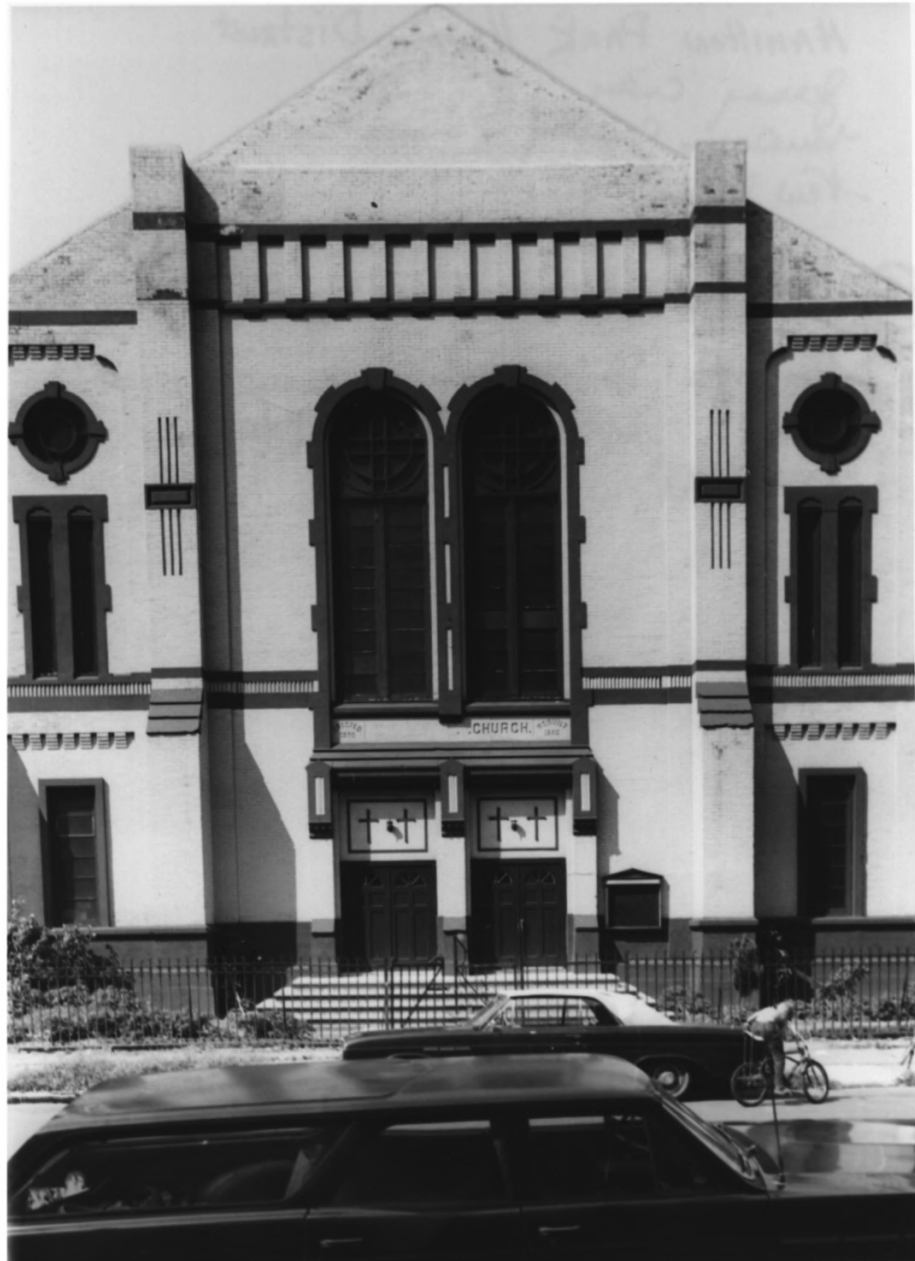
Vantage: North side of 8<sup>th</sup> Street, mid-way  
between Monmouth and Brunswick  
Streets

29

Photographed by Oppenheimer, Brady &  
Vogelstein. Negatives with O.B.U.

JAN 25 1978

October, 1976.



JUL 10 1978

HAMILTON PARK Historic District

Jersey City  
Hudson County

New Jersey 034

① 304 PAVONIA AVENUE

Vantage: South side of PAVONIA, opposite,  
between Coles and Monmouth.

31

Photographed by Oppenheimer, BRADY  
& Vogelstein. Negatives with. O.B.U.

October, 1976.

JAN 25 1979



HAMILTON PARK HISTORIC DISTRICT<sup>JUL 10 1978</sup>  
Jersey City  
Hudson County  
New Jersey 034  
31

(20) 302 1/2 PAVONIA AVENUE

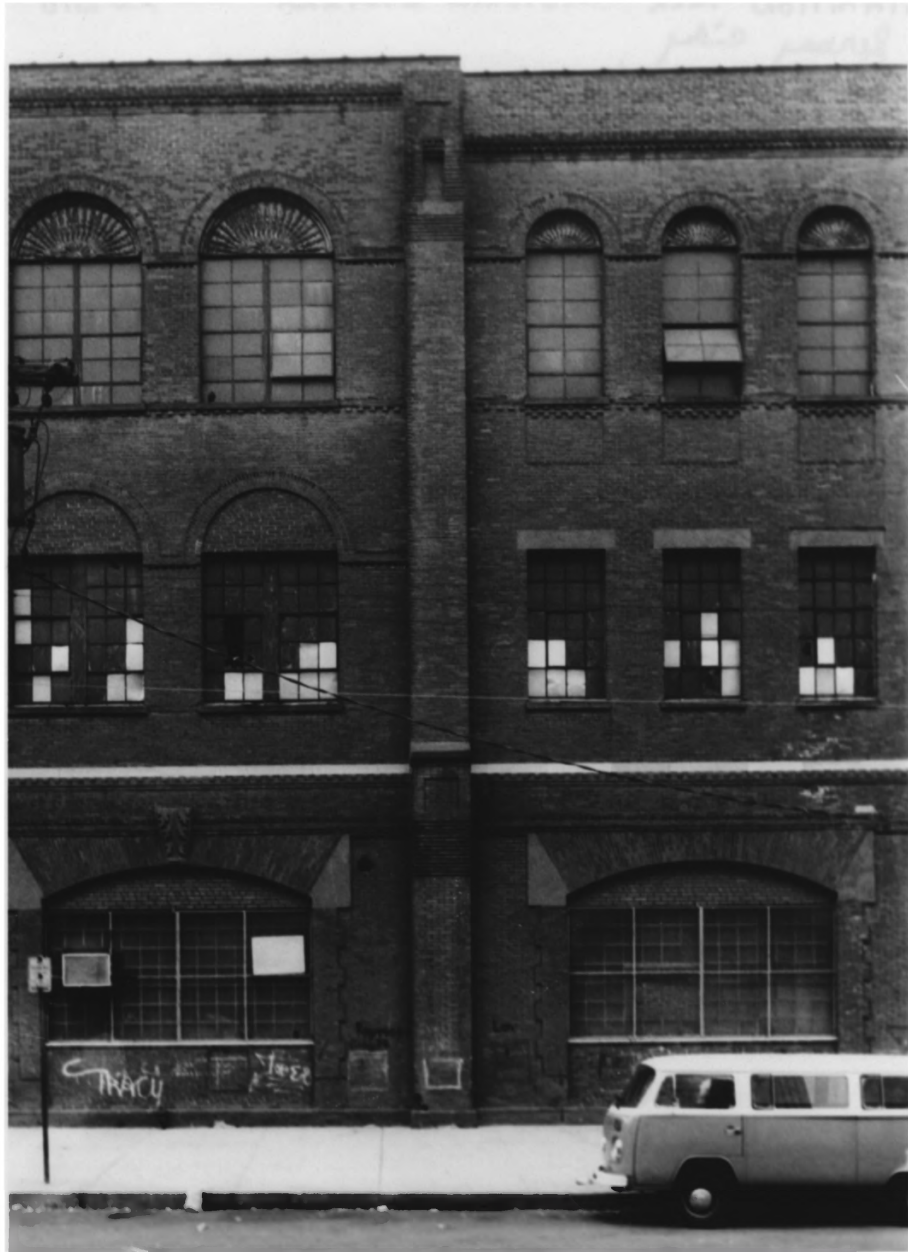
Vantage: South side of PAVONIA AVENUE,  
opposite, between Coles  
AND Nonmouth

Photographed by Oppenheimer, BRADY  
& Vogelstein. Negatives with O.B.U.

October, 1976.

JAN 25 1979





HAMILTON Park Historic District JUL 10 1978

Jersey City  
Hudson County  
New Jersey 07310

(21) 229-313 PAVONIA AVE

Vantage: North side of PAVONIA, opposite,  
between Coles and Monmouth

29

Photographed by Oppenheimer, BRADY &  
Vogelstein. Negatives with O.B.U.

October, 1976.

JAN 25 1979



HAMILTON PARK HISTORIC DISTRICT JUL 10 1978  
Jersey City  
Hudson County  
New Jersey 034

② 151-141 Coles Street

Vantage: South east CORNER OF PAUNIA  
AND Coles Street

24

Photographed by Oppenheimer, BRADY &  
Vogelstein. Negatives with same.

October, 1976

JAN 25 1979



JUL 10 1978

HAMILTON PARK Historic District

Jersey City  
Hudson County

New Jersey 034

② 152 1/2 - 146 Coles Street

Vantage - WEST SIDE OF Coles Street,  
between PAUNIA AND 8<sup>th</sup> Street

27

Photographed by Oppenheimer, BRADY &  
Vogelstein. Negatives with O.B.U.

JAN 25 1979

October, 1976.



HAMILTON PARK HISTORIC DISTRICT JUL 10 1978

Jersey City  
Hudson County  
New Jersey 034

(24) 164 Coles Street

VANTAGE: West SIDE OF Coles Street  
between PAUONIA AND 9<sup>th</sup> Street,  
opposite

27

Photographed by Oppenheimer, BRADY +  
Vogelstein. Negatives with O.B.V.

October, 1976.

JAN 25 1979





JUL 10 1978

HAMILTON PARK HISTORIC DISTRICT

Jersey City

Hudson County

New Jersey 034

② 658 + 656 Jersey Avenue

Vantage: West side of Jersey Avenue,  
opposite, between 7<sup>th</sup> and  
8<sup>th</sup> Streets

Photographed by Oppenheimer, BRADY  
& Vogelstein. Negatives with O.B.U.

October, 1976.

JAN 25 1979



JUL 10 1978

HAMILTON PARK  
Jersey City  
Hudson County  
New Jersey 034

(26) 648-658 Jersey Ave

Vantage: Southwest CORNER OF Jersey  
AND 7th Streets

31

Photographed by Oppenheimer, BRADY,  
+ Vogelstein. Negatives with O. B. U.

October, 1976.

JAN 25 1979



HAMILTON PARK HISTORIC DISTRICT JUL 10 1978  
Jersey City  
Hudson County  
New Jersey 034

(27) 651 Jersey Avenue

Vantage: EAST SIDE OF Jersey Avenue  
between 7<sup>th</sup> AND 8<sup>th</sup> Streets.

34

Photographed by Oppenheimer BRADY +  
Vogelstein. Negatives with O.B.U.

October, 1976.

JAN 25 1979.



JUL 10 1978

HAMILTON PARK HISTORIC DISTRICT  
Jersey City  
Hudson County  
New Jersey 034

⑦ 631-645 Jersey Avenue

Vantage: Southwest corner of Jersey and  
7th Streets, facing south

34

Photographed by Oppenheimer, Brady +  
Vogelstein. Negatives with O.B.U.

October, 1976.

JAN 25 1979





JUL 10 1978

HAMILTON PARK HISTORIC DISTRICT  
Jersey City  
Hudson County  
New Jersey 034

② 641 Jersey Avenue

Vantage: East side of Jersey  
Avenue between 6<sup>th</sup> AND  
7<sup>th</sup> Streets

34

Photographed by Oppenheimer, BRADY &  
Vogelstein. Negatives with SAME.

October, 1976.

JAN 20 1979



JUL 10 1978

HAMILTON PARK HISTORIC DISTRICT

Jersey City  
Hudson County

New Jersey 034

(30) 633 Jersey Avenue

VANTAGE: East side of Jersey Avenue,  
opposite, between 6<sup>th</sup> AND  
7<sup>th</sup> Streets

34

Photographed by Oppenheimer, BRADY &  
Vogelstein. Negatives with O.B.U.

October, 1976 .

JAN 25 1979

# SEVENTH STREET



242 - 254

Southern side of 7<sup>th</sup> Street, midway, between  
Erie and Jersey Avenues.

Hamilton Park Historic District

Jersey City

Hudson County

New Jersey

JAN 25 1979

JUL 10 1978

# 31



North side of PAVONIA Avenue, opposite



## 299-313 PAVONIA AVENUE

North west CORNER OF COLES AND PAVONIA AVENUE

Hamilton Park Historic District

Jersey City

Hudson County

New Jersey

JAN 25 1979

JUL 10 1978

#21

#32





**304<sup>1</sup>/<sub>2</sub> - 320**

Southwest corner of 8<sup>th</sup> and Coles Streets



**306<sup>1</sup>/<sub>2</sub> EIGHTH STREET**

Southeast side of 8<sup>th</sup> Street,  
between Coles and Monmouth, opposite

#33

Hamilton Park Historic District

Jersey City

Hudson County

New Jersey

JAN 25 1979

JUL 10 1978

8th St.



Southwest corner  
of BRUNSWICK AND  
8th Streets

**350-364**

Hamilton Park Historic District

Jersey City

Hudson County

New Jersey

JAN 25 1979

JUL 10 1978

# 35 (36?)

8th ST.



211                      213                      215  
North side of Pavonia, opposite, between GROVE AND ERIE  
Streets

PADONIA

JUL 10 1978

JAN 25 1979

#37



155<sup>1</sup>/<sub>2</sub> - 169<sup>1</sup>/<sub>2</sub>

South east corner of Pavonia Avenue and Coles Street

Hamilton Park  
Jersey City  
Hudson County  
New Jersey

**JUL 10 1978**

**JAN 25 1979**

COLES

ST.

# 38.