



KETTLE RIVER SANDSTONE COMPANY QUARRY  
PINE CO., MINNESOTA  
010681 #13/13A

KETTLE RIVER SANDSTONE COMPANY QUARRY 010681 - 13/13A  
SANDSTONE, MINNESOTA

MICHAEL KOOP

DECEMBER 1989

A.V. DEPT. - MINNESOTA HISTORICAL SOCIETY  
690 CEDAR ST., ST. PAUL, MN 55101

SOUTH

010681 #13/3A

From the Collection of the  
**MINNESOTA HISTORICAL SOCIETY**

DO NOT REPRODUCE  
WITHOUT WRITTEN PERMISSION

**NOTICE**

This Material May Be  
Protected By Copyright  
(Law Title 17 U.S. Code)





KETTLE RIVER SANDSTONE COMPANY QUARRY, STONE CRUSHER WALLS  
PINE CO., MINNESOTA  
010681 #10/10A

KETTLE RIVER SANDSTONE COMPANY QUARRY

010681 - 10/10A

SANDSTONE, MINNESOTA

MICHAEL KOOP

DECEMBER 1989

A.V. DEPT. - MINNESOTA HISTORICAL SOCIETY

690 CEDAR ST., ST. PAUL, MN. 55101

NORTHEAST - Stone crusher walls #9

010681 # 10/10A

From the Collection of the  
**MINNESOTA HISTORICAL SOCIETY**

DO NOT REPRODUCE  
WITHOUT WRITTEN PERMISSION

**NOTICE**

This Material May Be  
Protected By Copyright  
(Law Title 17 U.S. Code)





KETTLE RIVER SANDSTONE COMPANY QUARRY  
PINE CO., MINNESOTA  
010 681 #12/12A

KETTIE RIVER SANDSTONE COMPANY QUARRY  
SANDSTONE, MINNESOTA

010681 - 12/12A

MICHAEL KOOP

DECEMBER 1989

A.V. DEPT. - MINNESOTA HISTORICAL SOCIETY  
690 CEDAR ST., ST. PAUL, MN 55101

NORTH - DRILL HOLES IN QUARRY WALLS

010681 #12/12A

From the Collection of the  
**MINNESOTA HISTORICAL SOCIETY**

DO NOT REPRODUCE  
WITHOUT WRITTEN PERMISSION

**NOTICE**

This Material May Be  
Protected By Copyright  
(Law Title 17 U.S. Code)





KETTLE RIVER SANDSTONE COMPANY QUARRY  
PINE CO., MINNESOTA  
010681 # 15/15A

KETTLE RIVER SANDSTONE COMPANY QUARRY

010681-15/15A

SANDSTONE, MINNESOTA

MICHAEL KOOP

DECEMBER 1989

A.V. DEPT. - MINNESOTA HISTORICAL SOCIETY  
690 CEDAR ST., ST. PAUL, MN 55101

NORTH

010681 #15/15A

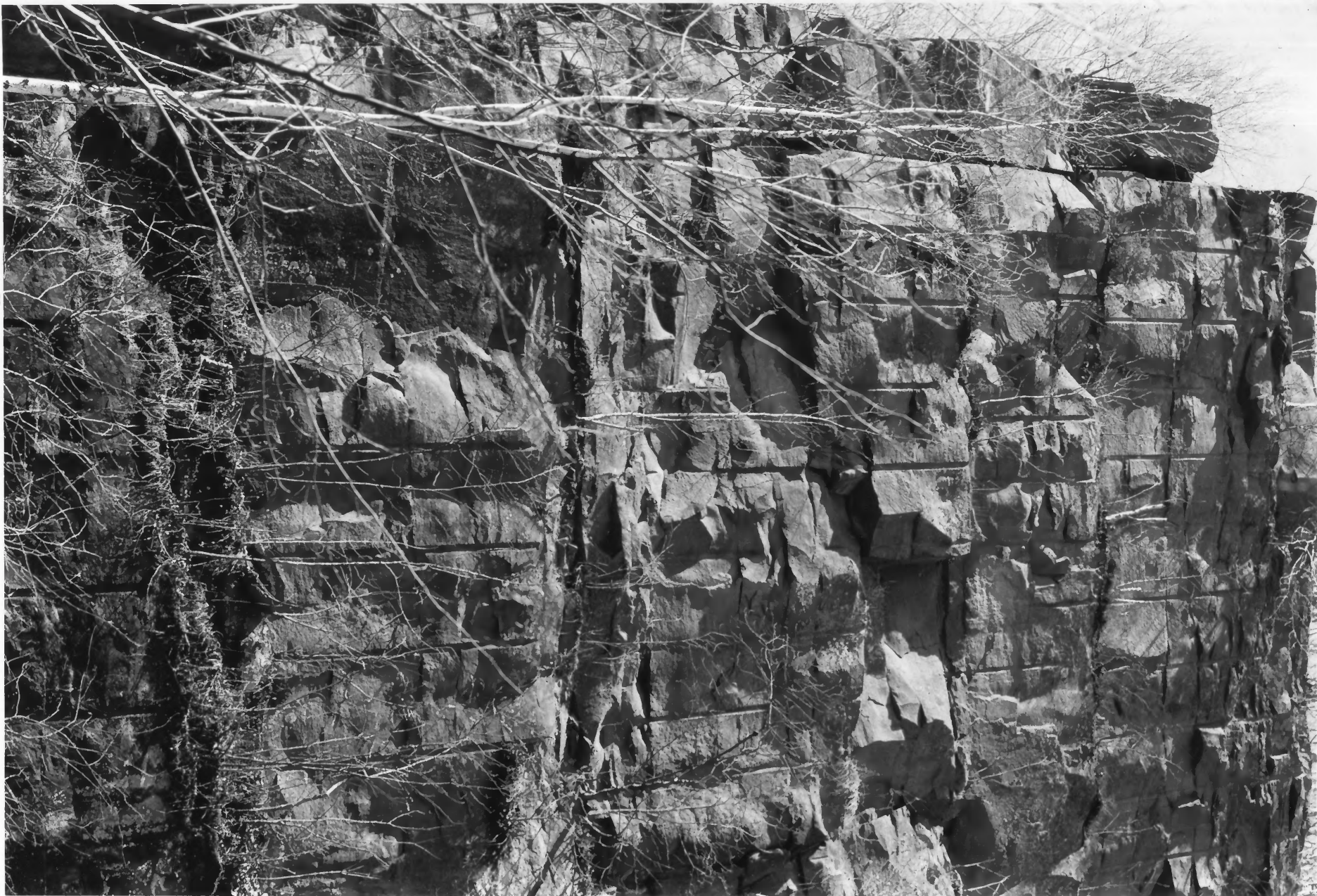
From the Collection of the  
**MINNESOTA HISTORICAL SOCIETY**

DO NOT REPRODUCE  
WITHOUT WRITTEN PERMISSION

**NOTICE**

This Material May Be  
Protected By Copyright  
(Law Title 17 U.S. Code)





KETTLE RIVER SANDSTONE COMPANY QUARRY  
PINE CO., MINNESOTA  
010544 #15



KETTLE RIVER SANDSTONE COMPANY QUARRY 010544-15  
SANDSTONE, MINNESOTA

MICHAEL KOOP

APRIL 1990

A.V. DEPT. - MINNESOTA HISTORICAL SOCIETY

690 CEDAR ST., ST. PAUL, MN 55101

WEST - DRILL MARKS IN QUARRY WALLS

010544 #15

From the Collection of the  
**MINNESOTA HISTORICAL SOCIETY**

DO NOT REPRODUCE  
WITHOUT WRITTEN PERMISSION

**NOTICE**  
This Material May Be  
Protected By Copyright  
(Law Title 17 U.S. Code)





KETTLE RIVER SANDSTONE COMPANY QUARRY  
PINE CO., MINNESOTA

010544 #16

KETTLE RIVER SANDSTONE COMPANY QUARRY  
SANDSTONE, MINNESOTA

010544-16

MICHAEL KOOP

APRIL 1990

A.V. DEPT. - MINNESOTA HISTORICAL SOCIETY  
690 CEDAR ST., ST. PAUL, MN 55101

NORTH WEST - DRILL MARKS

010544 #16

From the Collection of the  
**MINNESOTA HISTORICAL SOCIETY**

**DO NOT REPRODUCE  
WITHOUT WRITTEN PERMISSION**

**NOTICE**  
This Material May Be  
Protected By Copyright  
(Law Title 17 U.S. Code)





KETTLE RIVER SANDSTONE COMPANY QUARRY  
PINE CO., MINNESOTA  
010544 #17

KETTLE RIVER SANDSTONE COMPANY QUARRY  
SANDSTONE, MINNESOTA  
MICHAEL KOOP  
APRIL 1990

010544-17

A.V. DEPT. - MINNESOTA HISTORICAL SOCIETY  
690 CEDAR ST., ST. PAUL, MN 55101

SOUTHWEST  
010544 #17

From the Collection of the  
**MINNESOTA HISTORICAL SOCIETY**

DO NOT REPRODUCE  
WITHOUT WRITTEN PERMISSION

**NOTICE**

This Material May Be  
Protected By Copyright  
(Law Title 17 U.S. Code)





KETTLE RIVER SANDSTONE COMPANY QUARRY  
PINE CO., MINNESOTA  
010544 #22

KETTLE RIVER SANDSTONE COMPANY QUARRY 010544-22  
SANDSTONE, MINNESOTA

MICHAEL KOOP

APRIL 1990

A.V. DEPT. MINNESOTA HISTORICAL SOCIETY  
690 CEDAR ST., ST. PAUL, MN 55101



NORTH - QUARRY SITE RUINS #9  
010544 #22

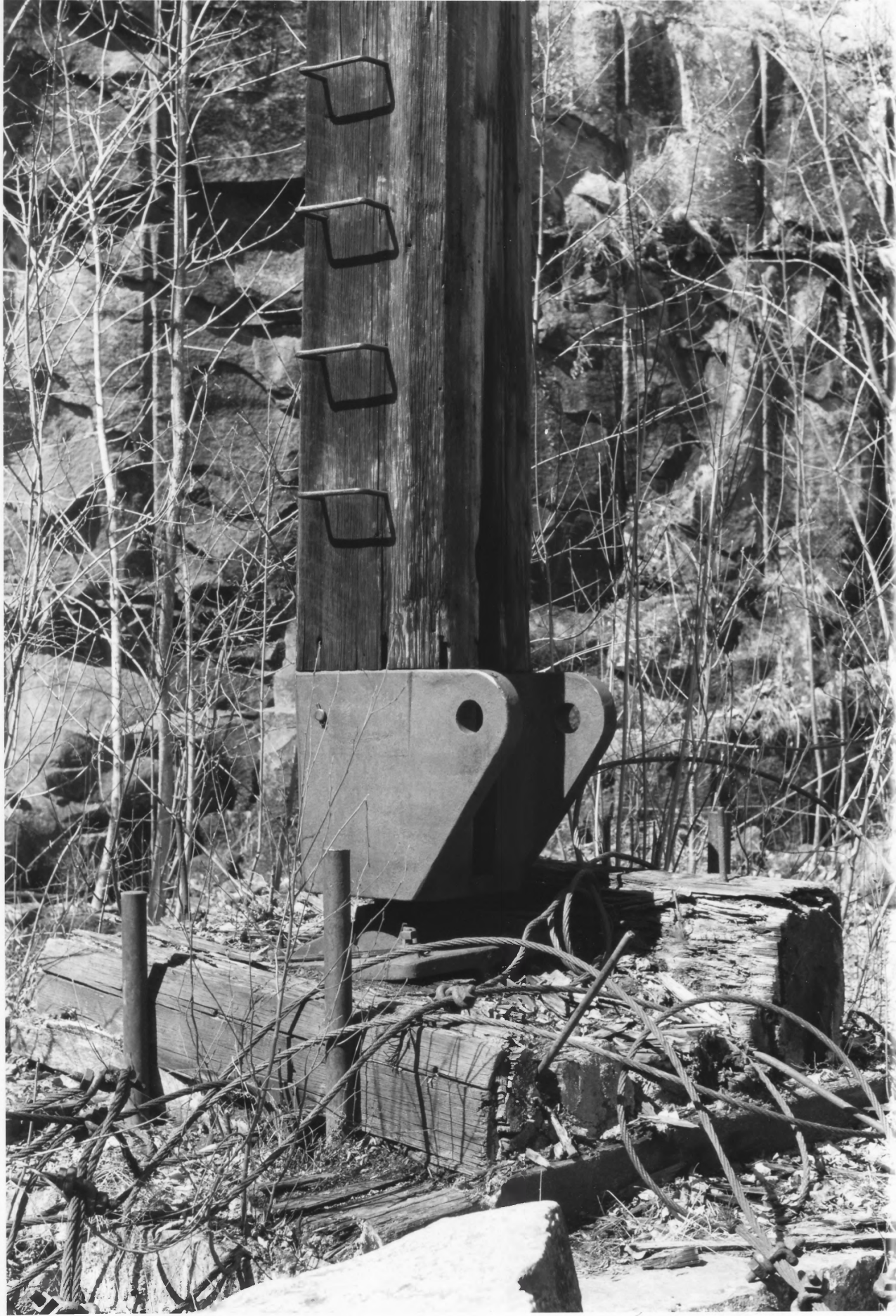
From the Collection of the  
**MINNESOTA HISTORICAL SOCIETY**

DO NOT REPRODUCE  
WITHOUT WRITTEN PERMISSION

**NOTICE**

This Material May Be  
Protected By Copyright  
(Law Title 17 U.S. Code)





KETTLE RIVER SANDSTONE COMPANY QUARRY, BASE OF DERRICK MAST  
PINE CO., MINNESOTA  
010544 #20

KETTLE RIVER SANDSTONE COMPANY QUARRY  
SANDSTONE, MINNESOTA

010544-20

MICHAEL KOOP

APRIL 1990

A.V. DEPT. - MINNESOTA HISTORICAL SOCIETY  
690 CEDAR ST., ST. PAUL, MN 55101

NORTHWEST - Base of Derrick Mast # 8

010544 #20

From the Collection of the  
**MINNESOTA HISTORICAL SOCIETY**

DO NOT REPRODUCE  
WITHOUT WRITTEN PERMISSION

**NOTICE**

This Material May Be  
Protected By Copyright  
(Law Title 17 U.S. Code)





KETTLE RIVER SANDSTONE COMPANY QUARRY - DERRICK MAST  
PINE CO., MINNESOTA  
010681 # 7/7A

KETTLE RIVER SANDSTONE COMPANY QUARRY  
SANDSTONE, MINNESOTA

010681 - 7/7A

MICHAEL KOOP  
DECEMBER 1989

A.V. DEPT, - MINNESOTA HISTORICAL SOCIETY  
690 CEDAR ST., ST. PAUL, MN 55101

WEST Derrick MAST #8

010681 #7/7A

From the Collection of the  
**MINNESOTA HISTORICAL SOCIETY**

DO NOT REPRODUCE  
WITHOUT WRITTEN PERMISSION

**NOTICE**

This Material May Be  
Protected By Copyright  
(Law Title 17 U.S. Code)





KETTLE RIVER SANDSTONE COMPANY QUARRY - DERRICK MAST

PINE CO., MINNESOTA

010681 # 14/14A

KETTLE RIVER SANDSTONE COMPANY QUARRY/O 10681 - 14/14A  
SANDSTONE, MINNESOTA  
MICHAEL KOOP

DECEMBER 1989

A.V. DEPT. - MINNESOTA HISTORICAL SOCIETY  
690 CEDAR ST., ST. PAUL, MN 55101

EAST - Derrick Mast #8

010681 #14/14A

From the Collection of the  
**MINNESOTA HISTORICAL SOCIETY**

DO NOT REPRODUCE  
WITHOUT WRITTEN PERMISSION

**NOTICE**

This Material May Be  
Protected By Copyright  
(Law Title 17 U.S. Code)





KETTLE RIVER SANDSTONE COMPANY QUARRY  
PINE CO., MINNESOTA

010544 #24

KETTLE RIVER SANDSTONE COMPANY QUARRY

SANDSTONE, MINNESOTA

MICHAEL KOOP

APRIL 1990

A.V. DEPT. - MINNESOTA HISTORICAL SOCIETY  
690 CEDAR ST., ST PAUL, MN 55101

010544-24

SOUTHWEST, QUARRY AREA IN ROBINSON PARK

010544 #24

From the Collection of the  
**MINNESOTA HISTORICAL SOCIETY**

DO NOT REPRODUCE  
WITHOUT WRITTEN PERMISSION

**NOTICE**  
This Material May Be  
Protected By Copyright  
(Law Title 17 U.S. Code)





KETTLE RIVER SANDSTONE COMPANY QUARRY, ARTESIAN WELL Building  
PINE CO., MINNESOTA  
010544 #23



KETTLE RIVER SANDSTONE COMPANY QUARRY  
SANDSTONE, MINNESOTA

010544-23

MICHAEL KOOP

APRIL 1990

A.V. DEPT. - MINNESOTA HISTORICAL SOCIETY  
690 CEDAR ST., ST. PAUL, MN 55107

SOUTH WEST - ARTESIAN WELL Building #7

010544 #23

From the Collection of the  
**MINNESOTA HISTORICAL SOCIETY**

DO NOT REPRODUCE  
WITHOUT WRITTEN PERMISSION

**NOTICE**

This Material May Be  
Protected By Copyright  
(Law Title 17 U.S. Code)





KETTLE RIVER SANDSTONE COMPANY QUARRY - DEEP WELL PUMP HOUSE  
PINE CO., MINNESOTA

010681 # %A NON-CONTRIBUTING

KETTLE RIVER SANDSTONE COMPANY QUARRY  
SANDSTONE, MINNESOTA

010681-0/0A

MICHAEL KOOP

DECEMBER 1989

AV. DEPT. - MINNESOTA HISTORICAL SOCIETY

690 CEDAR ST., ST. PAUL, MN 55101

SOUTH WEST - Deep well Pump House #1

010681 #0/0A

NON-CONTRIBUTING

From the Collection of the  
**MINNESOTA HISTORICAL SOCIETY**

DO NOT REPRODUCE  
WITHOUT WRITTEN PERMISSION

**NOTICE**  
This Material May Be  
Protected By Copyright  
(Law Title 17 U.S. Code)





KETTLE RIVER SANDSTONE COMPANY QUARRY - Pumping station  
PINE CO., MINNESOTA  
010681 #1/A

KETTLE RIVER SANDSTONE COMPANY QUARRY 010681 - 1-1A

SANDSTONE, MINNESOTA

MICHAEL KOOP

DECEMBER 1989

A.V. DEPT. - MINNESOTA HISTORICAL SOCIETY

690 CEDAR ST., ST. PAUL, MN 55101

NORTHWEST - Dumping Station # 2

010681 #1/1A

From the Collection of the  
**MINNESOTA HISTORICAL SOCIETY**

DO NOT REPRODUCE  
WITHOUT WRITTEN PERMISSION

**NOTICE**

This Material May Be  
Protected By Copyright  
(Law Title 17 U.S. Code)





KETTLE RIVER SANDSTONE COMPANY QUARRY - RESERVOIR  
PINE CO., MINNESOTA  
010681 # 2/2A NON-CONTRIBUTING

KETTLE RIVER SANDSTONE COMPANY QUARRY 010681-2/2A  
SANDSTONE, MINNESOTA

MICHAEL KOOF

DECEMBER 1989

A.V. DEPT., MINNESOTA HISTORICAL SOCIETY  
610 CEDAR ST., ST. PAUL, MN 55101

SOUTH - Reservoir #3

010681 # 2/2A

NONCONTRIBUTING

From the Collection of the  
**MINNESOTA HISTORICAL SOCIETY**

DO NOT REPRODUCE  
WITHOUT WRITTEN PERMISSION

**NOTICE**  
This Material May Be  
Protected By Copyright  
(Law Title 17 U.S. Code)





KETTLE RIVER SANDSTONE COMPANY QUARRY - PARK SHELTER  
PINE CO., MINNESOTA

010681 # 3/3A

NON-CONTRIBUTING

KETTLE RIVER SANDSTONE COMPANY QUARRY 010681 - 3/3A  
SANDSTONE, MINNESOTA

MICHAEL KOOP

DECEMBER 1989

A.V. DEPT. - MINNESOTA HISTORICAL SOCIETY  
690 CEDAR ST., ST. PAUL, MN 55101

NORTHEAST - PARK Shelter #4

010681 #3/3A

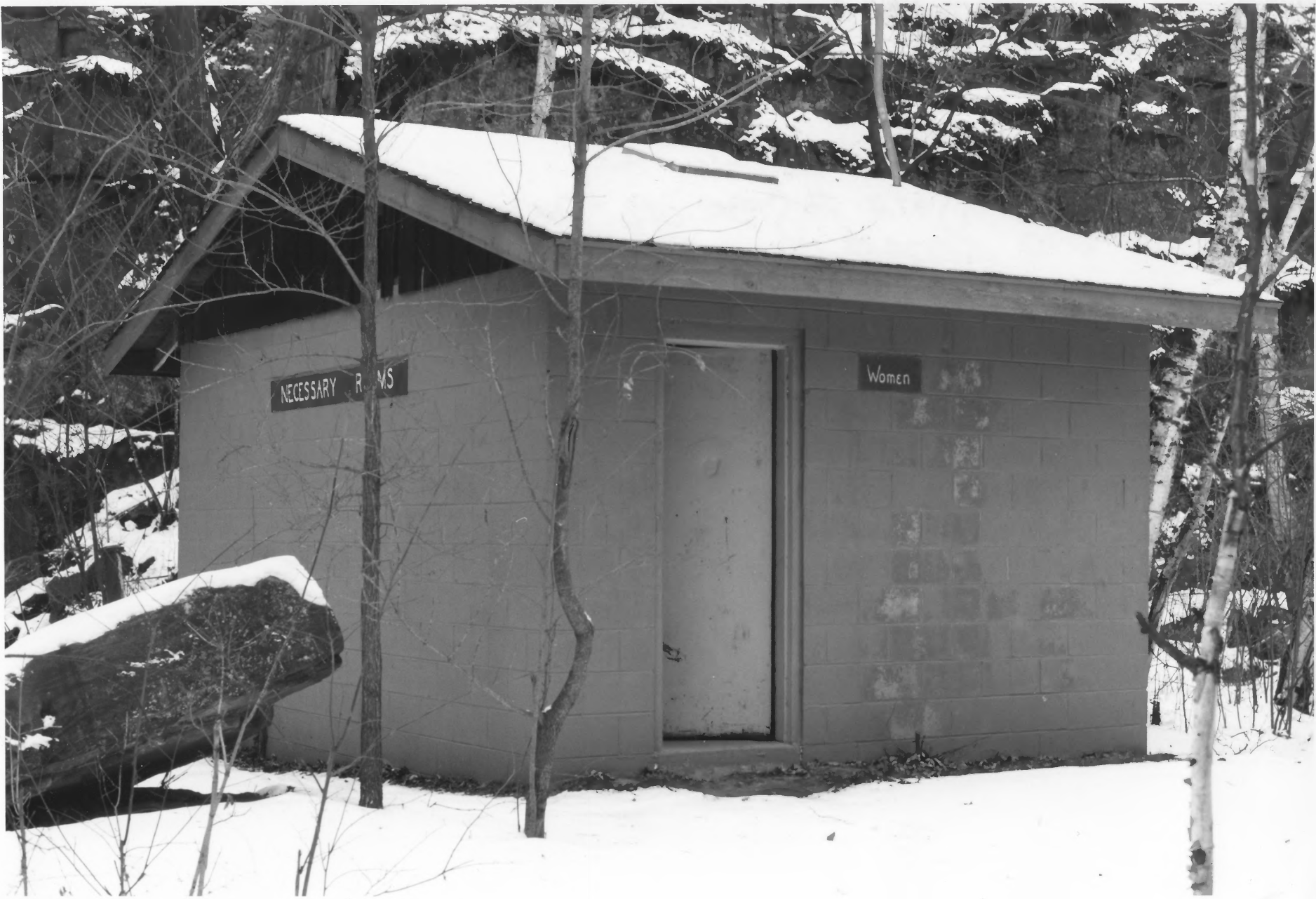
NON-CONTRIBUTING

From the Collection of the  
**MINNESOTA HISTORICAL SOCIETY**

DO NOT REPRODUCE  
WITHOUT WRITTEN PERMISSION

**NOTICE**  
This Material May Be  
Protected By Copyright  
(Law Title 17 U.S. Code)





KETTLE RIVER SANDSTONE COMPANY QUARRY - BATHROOM  
PINE CO., MINNESOTA  
010681 # 4/4A NON-CONTRIBUTING

KETTLE RIVER SANDSTONE COMPANY QUARRY  
SANDSTONE, MINNESOTA

010681-4/4A

MICHAEL KOOP

DECEMBER 1989

A.V. DEPT. - MINNESOTA HISTORICAL SOCIETY  
690 CEDAR ST., ST. PAUL, MN 55101

NORTH WEST - Bathroom #5

01068/4-4A

NON-CONTRIBUTING

From the Collection of the  
**MINNESOTA HISTORICAL SOCIETY**

**DO NOT REPRODUCE  
WITHOUT WRITTEN PERMISSION**

**NOTICE**

This Material May Be  
Protected By Copyright  
(Law Title 17 U.S. Code)





KETTLE RIVER SANDSTONE COMPANY QUARRY - PARK SHELTER  
PINE CO., MINNESOTA

010 681 #5/5A NON-CONTRIBUTING

KETTLE RIVER SANDSTONE COMPANY QUARRY  
SANDSTONE, MINNESOTA  
MICHAEL KOOP  
DECEMBER 1989

010681-5/5A

A.V. DEPT., MINNESOTA HISTORICAL SOCIETY  
690 CEDAR ST., ST. PAUL MN 55101

NORTH PARK SHELTER #6

010681 #5/5A

NON-CONTRIBUTING

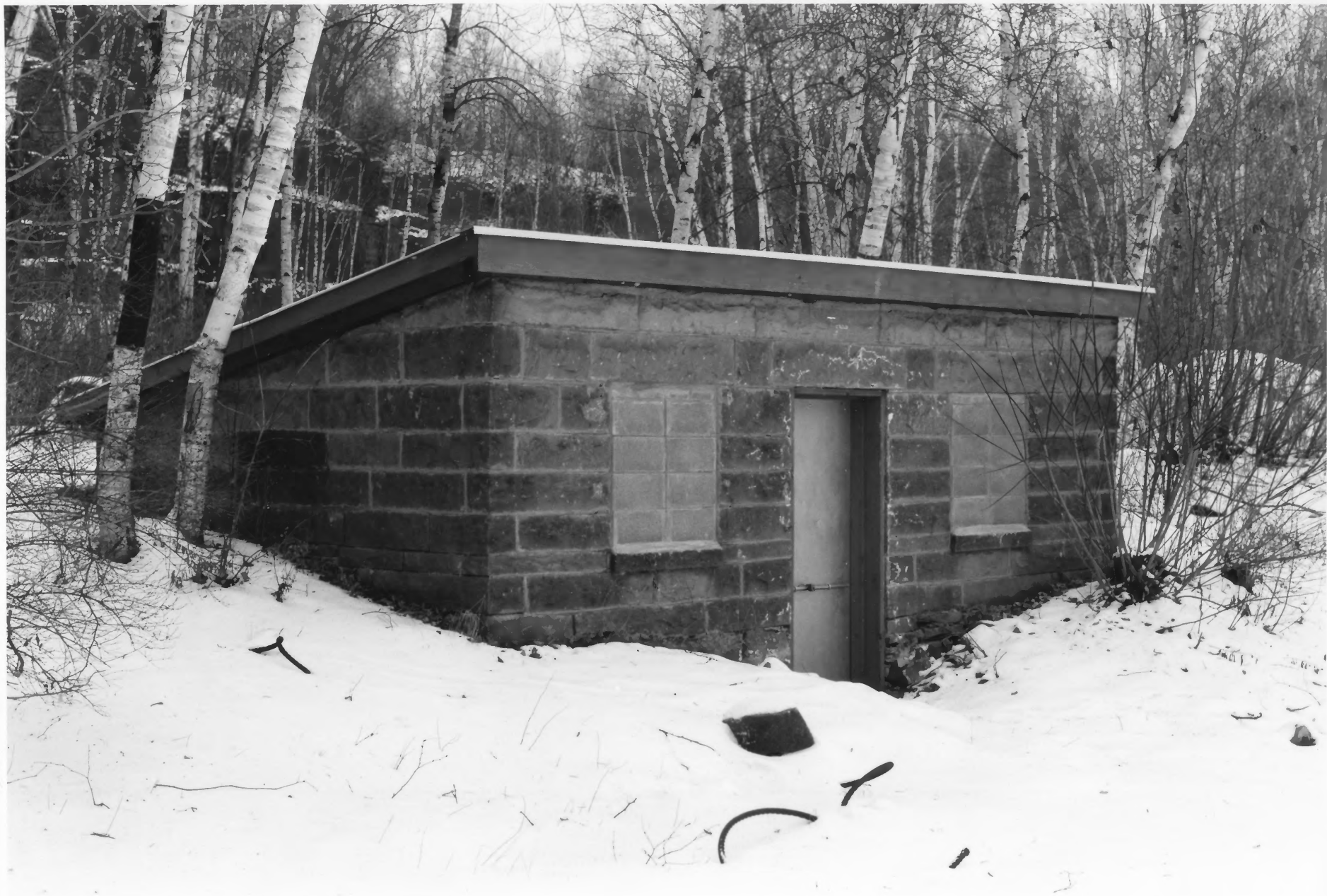
From the Collection of the  
**MINNESOTA HISTORICAL SOCIETY**

DO NOT REPRODUCE  
WITHOUT WRITTEN PERMISSION

**NOTICE**

This Material May Be  
Protected By Copyright  
(Law Title 17 U.S. Code)





KETTLE RIVER SANDSTONE COMPANY QUARRY - ARTESIAN WELL BLDG.  
PINE CO., MINNESOTA  
010681 #6/6A

KETTLE RIVER SANDSTONE COMPANY QUARRY  
SANDSTONE, MINNESOTA

010681-6/6A

MICHAEL ROOP

DECEMBER 1989

A.V. DEPT. - MINNESOTA HISTORICAL SOCIETY

690 CEDAR ST., ST. PAUL, MN 55101

NORTHWEST - ARTESIAN WELL BLDG #7

010681 #6/6A

From the Collection of the  
**MINNESOTA HISTORICAL SOCIETY**

DO NOT REPRODUCE  
WITHOUT WRITTEN PERMISSION

**NOTICE**

This Material May Be  
Protected By Copyright  
(Law Title 17 U.S. Code)





KETTLE RIVER SANDSTONE COMPANY QUARRY, DERRICK MAST  
PINE CO., MINNESOTA  
010544 #19

KETTLE RIVER SANDSTONE COMPANY QUARRY  
SANDSTONE, MINNESOTA

010544 - 19

MICHAEL KOOP

APRIL 1990

A.V. DEPT. - MINNESOTA HISTORICAL SOCIETY  
690 CEDAR ST., ST. PAUL, MN 55101

WEST - DERRICK MAST #8

010544 #19

From the Collection of the  
**MINNESOTA HISTORICAL SOCIETY**

**DO NOT REPRODUCE  
WITHOUT WRITTEN PERMISSION**

**NOTICE**  
This Material May Be  
Protected By Copyright  
(Law Title 17 U.S. Code)





KETTLE RIVER SANDSTONE COMPANY QUARRY - STONE CRUSHER WALLS  
PINE CO., MINNESOTA  
010681 # 9/9A

KETTLE RIVER SANDSTONE COMPANY QUARRY  
SANDSTONE, MINNESOTA  
MICHAEL KOOP

010681 - 9/9A

DECEMBER 1989

A.V. DEPT. - MINNESOTA HISTORICAL SOCIETY  
690 CEDAR ST., ST. PAUL, MN 55101

NORTH - STONE CRUSHER WALLS # 9

010681 #9/  
9A

From the Collection of the  
**MINNESOTA HISTORICAL SOCIETY**

DO NOT REPRODUCE  
WITHOUT WRITTEN PERMISSION

**NOTICE**

This Material May Be  
Protected By Copyright  
(Law Title 17 U.S. Code)





KETTLE RIVER SANDSTONE COMPANY QUARRY - Remains of DAM  
PINE CO., MINNESOTA  
010544 #21



KETTLE RIVER SANDSTONE COMPANY QUARRY  
SANDSTONE, MINNESOTA

010544 - 21

MICHAEL KOOP

APRIL 1990

A.V. DEPT - MINNESOTA HISTORICAL SOCIETY  
690 CEDAR ST., ST. PAUL, MN 55101

EAST - QUARRY SITE RUINS, REMAINS OF DAM #9

010544 #21

From the Collection of the  
**MINNESOTA HISTORICAL SOCIETY**

**DO NOT REPRODUCE  
WITHOUT WRITTEN PERMISSION**

**NOTICE**  
This Material May Be  
Protected By Copyright  
(Law Title 17 U.S. Code)