



①

KING, CHARLES, HOUSE  
PHILOMATH VICINITY  
BENTON COUNTY, OREGON



②

KWG, CHARLES, HOUSE  
PALOMATH, VICINITY  
BENTON COUNTY, OREGON



③

KING, CHARLES, HOUSE  
PHILOMATH VICINITY  
BENTON COUNTY, OREGON



④

KWG CHARLES HOUSE  
PHILOMATH VICINITY  
BENTON COUNTY, OREGON





⑤

KING, CHARLES, HOUSE  
PHILOMATH VICINITY  
BENTON COUNTY, OREGON

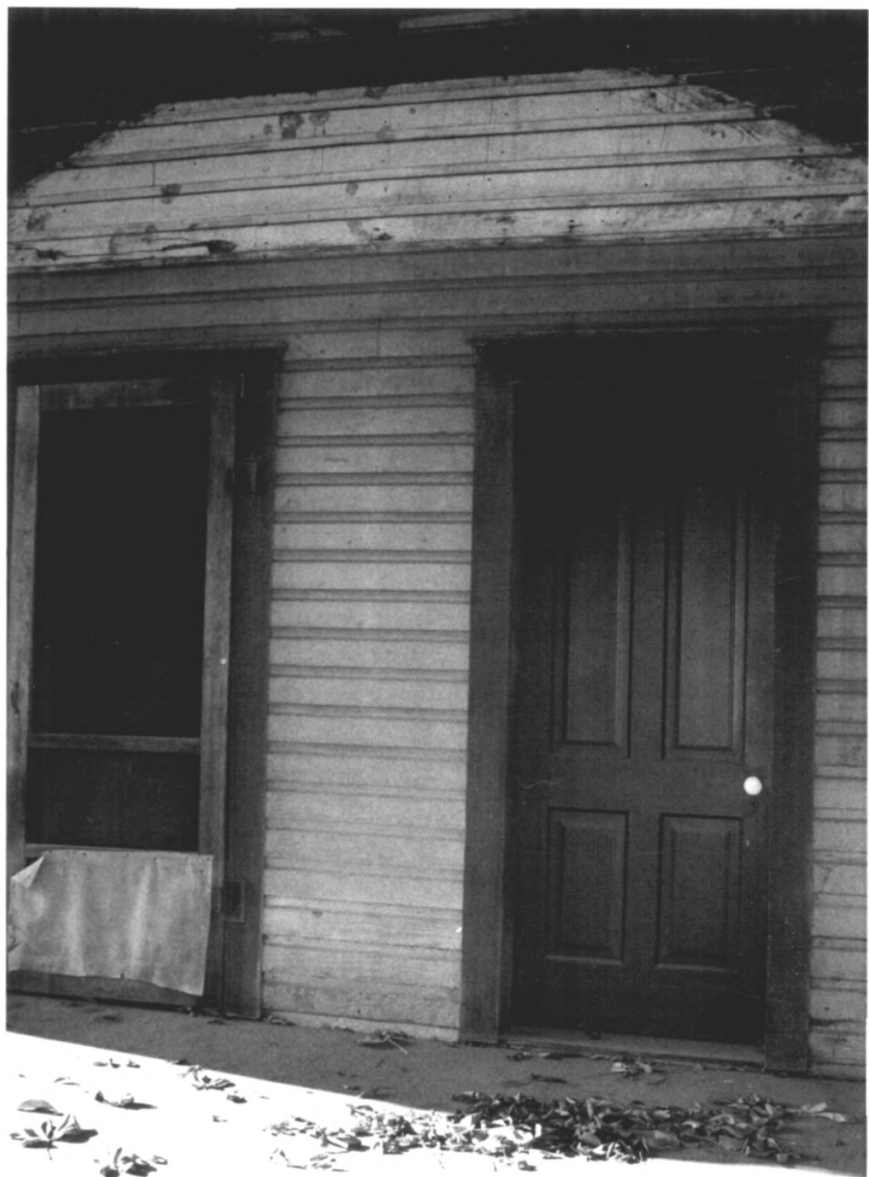


⑥

KING, CHARLES, HOUSE

PHILOMATH VICINITY

BENTON COUNTY, OREGON



⑦

KING, CHARLES, HOUSE  
PHILOMATH VICINITY  
BENTON COUNTY, OREGON



⑧

KING, CHARLES, HOUSE

PHILOMATH VICINITY

BENTON COUNTY, OREGON





⑨

KING, CHARLES, HOUSE

PHILOMATH VICINITY

BENTON COUNTY, OREGON



⑩

KING, CHARLES, HOUSE  
PHILOMATH VICINITY  
BENTON COUNTY, OREGON



②

KING, CHARLES, HOUSE  
PHILOMATH VICINITY  
BENTON COUNTY, OREGON



⑫

KING, CHARLES, HOUSE  
~~W~~ PHILOMATH VICINITY  
BENTON COUNTY, OREGON





⑬

KING, CHARLES, HOUSE

PHILOMATH VICINITY

BENTON COUNTY, OREGON



(14)

KING, CHARLES, HOUSE

PHILOMATH VICINITY

BENTON COUNTY, OREGON



15

KING, CHARLES, HOUSE

PHILOMATH VICINITY

BENTON COUNTY, OREGON



①6

KING, CHARLES, HOUSE

PHILOMATH VICINITY

BENTON COUNTY, OREGON





①7

KING, CHARLES, HOUSE  
PHILOMATH VICINITY  
BENTON COUNTY, OREGON



18

KING, CHARLES, HOUSE  
PHILOMATH VICINITY  
BENTON COUNTY, OREGON

Herald Harris on R.R. track  
Morgan house

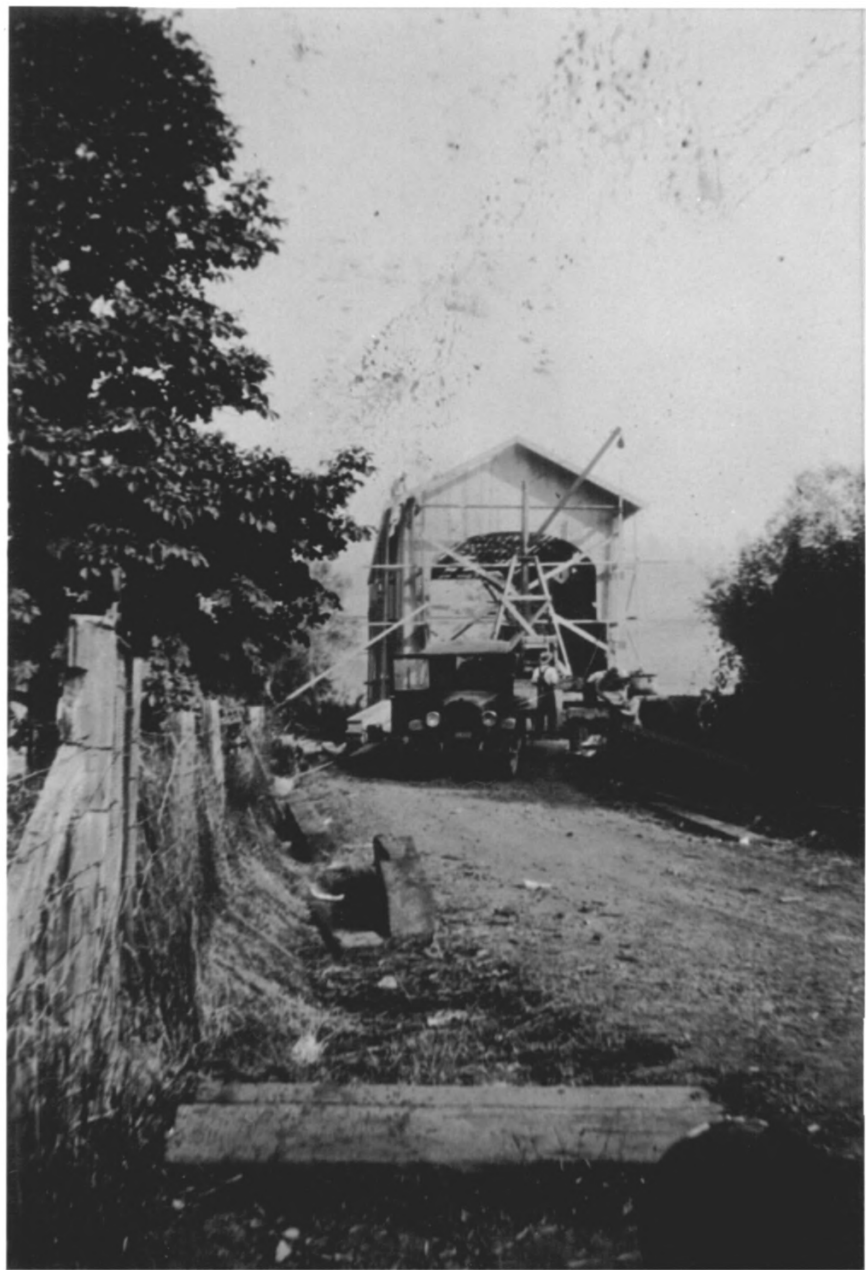


①9

KING, CHARLES, HOUSE

PHILOMANTH VICINITY

BENTON COUNTY, OREGON



20

KING, CHARLES, HOUSE  
PHILOMATH VICINITY  
BENTON COUNTY, OREGON





21

KING, CHARLES, HOUSE  
PHILOMATH VICINITY  
BENTON COUNTY, OREGON