



Band Barracks, #48

CRS # 1499.023

Fort DuPont Historic District

East side of Route 9, south of Delaware City

Delaware City vicinity, St. Georges Hundred, New Castle
County, Delaware

Photograph taken by Caroline C. Fisher

July 1993

Negative location: DELAWARE DEPT. OF NATURAL RESOURCES AND ENVIRONMENTAL CONTROL

View of southeast elevation Facing northwest

1/23



Officers Quarters (Double) # 51 A & B
CRS # N-1499, 025

Fort DuPont Historic District

East side of Route 9 south of Delaware City

Delaware City vicinity, St. Georges Hundred, New Castle County,
Delaware

Photographed by Caroline C. Fisher

July, 1993

Negative location: DELAWARE DEPT. OF NATURAL RESOURCES AND ENVIRONMENTAL CONTROL

Perspective of northwest & northeast walls facing southeast

2/23



Bakery, #54

CRS # N-1499.028

Fort DuPont Historic District

East side of Route 9, south of Delaware City

Delaware City vicinity, St. Georges Hundred, New Castle

County, Delaware

Photograph taken by Caroline C. Fisher

July, 1993

Negative location: DELAWARE DEPT. OF NATURAL RESOURCES AND ENVIRONMENTAL
CONTROL

Perspective of northwest front & northeast side
looking south

3/23



First
Delaware
Society

Service Club

CRS # N-1499.031

Fort DuPont Historic District

East side of Route 9, south of Delaware City

Delaware City vicinity, St. Georges Hundred, New
Castle County, Delaware

Photograph taken by Caroline C. Fisher

July 1993

Negative location: DELAWARE DEPT. OF NATURAL RESOURCES AND ENVIRONMENTAL
CONTROL.

Perspective of southwest front & southeast side
looking northeast

4/23



Quartermaster's Stable, #17 (new)

CRS # N-1499.030

Fort DuPont Historic District

East side of Route 9, south of Delaware City

Delaware City vicinity, St. Georges Hundred, New Castle
County, Delaware

Photograph taken by Caroline C. Fisher

July, 1993

Negative location: DELAWARE DEPT. OF NATURAL RESOURCES AND ENVIRONMENTAL CONTROL

Perspective of southwest front & northwest side
looking east

5/23



Administration Building

CRS # N-1499.015

Fort DuPont Historic District

East side of Route 9, south of Delaware city

Delaware City vicinity, St. Georges Hundred, New Castle County,

Delaware

Photograph taken by Caroline C. Fisher

July, 1993

Negative location: DELAWARE OF DEPT. OF NATURAL RESOURCES AND ENVIRONMENTAL CONTROL

Perspective of southwest and southeast exterior facing
north

4/23



Officers' Quarters (single), # 23

CRS # N-1499,009

Fort DuPont Historic District

East side of Route 9, south of Delaware City

Delaware City vicinity, St. Georges Hundred, New Castle County,

Delaware

Photograph taken by Caroline C. Fisher

July 1993

Negative location: DELAWARE DEPT. OF NATURAL RESOURCES AND ENVIRONMENTAL CONTROL.

Perspective of west side & south front looking east

7/23



Post Exchange, #36

CRS # N-1499.020

Fort DuPont Historic District

East side of Route 9, south of Delaware City

Delaware City vicinity, St. Georges Hundred, New Castle
County, Delaware

Photograph taken by Caroline C. Fisher

July 1993

Negative Location: DELAWARE DEPT. OF NATURAL RESOURCES AND ENVIRONMENTAL CONTROL

Perspective of southeast front & southwest side
looking northeast

8/23



Field Officers' Quarters, # 6 (New)
CRS # N-1499, 039

Fort DuPont Historic District

East side of Route 9, south of Delaware City
Delaware City vicinity, St. Georges Hundred,
New Castle County, Delaware

Photograph taken by Caroline C. Fisher
July 1993

Negative Location: DELAWARE DEPT. OF NATURAL RESOURCES AND
ENVIRONMENTAL CONTROL

View of Northeast front looking
Southwest

9/23





War Department Theater # 29

CRS # N-1499,046

Fort DuPont Historic District

East side of Route 9, south of Delaware City

Delaware City vicinity, St. Georges Hundred, New Castle
County, Delaware

Photograph taken by Caroline C. Fisher

July, 1993

Negative Location DELAWARE DEPT. OF NATURAL RESOURCES AND ENVIRONMENTAL
CONTROL

Northeast wall of auditorium looking northeast

11/23



Gasoline Filling Station

CRS N-1499.047

Fort Dupont Historic District

East side of Rt 9, south of Delaware City

Delaware City vicinity, St. George's Hundred, New Castle County, Delaware

Photo taken by Caroline Fisher

July 1993

Negative location: DELAWARE DEPT. OF NATURAL RESOURCES AND ENVIRONMENTAL CONTROL

Perspective of north and west sides looking east

12/23



Barracks, # 24 (New)

CRS # 1499.053

Fort DuPont Historic District

East side of Route 9, south of Delaware City
Delaware City vicinity, St. Georges Hundred, New Castle
County, Delaware

Photograph taken by Caroline C. Fisher

July 1993

Negative location DELAWARE DEPT. OF NATURAL RESOURCES AND ENVIRONMENTAL CONTROL

Perspective of northeast side & northwest front
looking south

13/23



Barracks, # 49

CRS. # N-1499.052

Fort DuPont Historic District

East side of Route 9, south of Delaware City

Delaware City vicinity, St. Georges Hundred, New
Castle County, Delaware

Photograph taken by Caroline C. Fisher

July 1993

Negative location: DELAWARE DEPT OF NATURAL RESOURCES AND ENVIRONMENTAL CONTROL.

Perspective of southeast & southwest sides looking
Northwest

14/23



Recreation Building, # E-308

CRS # N-1499.054

Fort DuPont Historic District

East side of Route 9, south of Delaware City

Delaware City vicinity, St. Georges Hundred, New Castle
County, Delaware

Photograph taken by Caroline C. Fisher

July, 1993

Negative location DELAWARE DEPT. OF NATURAL RESOURCES AND ENVIRONMENTAL
CONTROL.

Perspective of Northeast & Northwest sides
looking southwest

15/23



Chapel, # E-215

CRS # N-1499.055

Fort DuPont Historic District

East side of Route 9, south of Delaware City

Delaware City vicinity, St. Georges Hundred,
New Castle County, Delaware

Photograph taken by Caroline C. Fisher

July 1993

Negative location: DELAWARE DEPT OF NATURAL RESOURCES AND
ENVIRONMENTAL CONTROL

View of southeast facade facing northwest

16/23



Hospital mess Hall CRS # N-1499.059

Hospital Barracks CRS # N-1499.082

Fort DuPont Historic District

East side of Route 9, south of Delaware City

Delaware city vicinity, St. Georges Hundred, New
Castle County, Delaware

Photograph taken by Caroline C. Fisher

July 1993

Negative location: DELAWARE DEPT. OF NATURAL RESOURCES AND ENVIRONMENTAL CONTROL

View of northeast & southeast sides looking northwest

17/23



Coastal Artillery Corps Radio Tower / POW Guard
Tower

CRS # N-1499.064

Fort DuPont Historic District

East side of Route 9, south of Delaware City

Delaware City vicinity, St. Georges Hundred,

New Castle County, Delaware

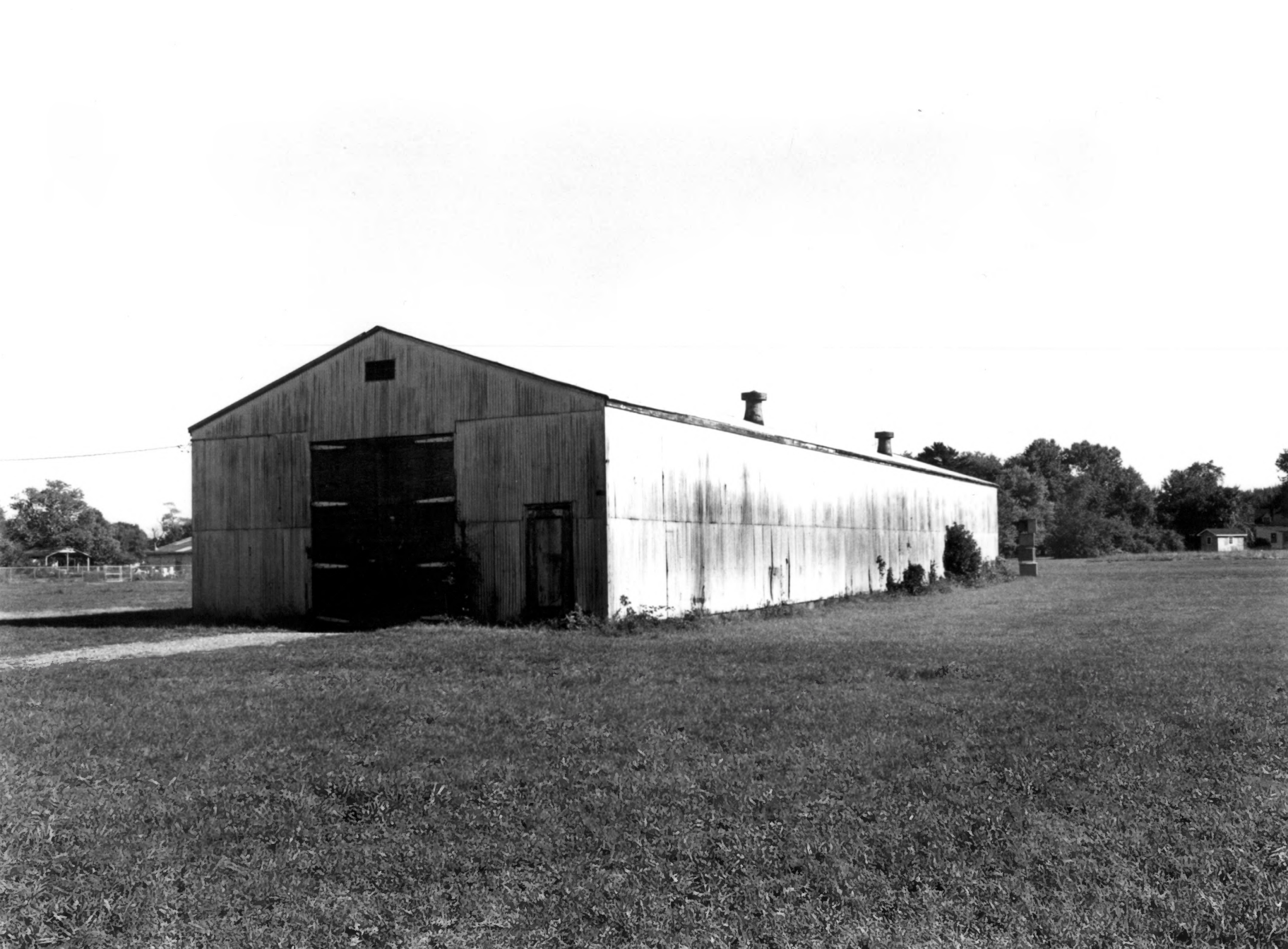
Photograph taken by Caroline C. Fisher

July, 1993

Negative location: DELAWARE DEPT. OF NATURAL RESOURCES AND ENVIRONMENTAL
CONTROL

East side of tower looking west

18/23



Pontoon shed

CRS # N-1499.067

Fort DuPont Historic District

East side of Route 9, south of Delaware City

Delaware City vicinity, St. Georges Hundred, New Castle
County, Delaware

Photograph taken by Caroline C. Fisher

July, 1993

Negative location: DELAWARE DEPT. OF NATURAL RESOURCES AND ENVIRONMENTAL
CONTROL

Perspective of southwest front & southeast side
facing north

19/23



Post Engineering Supply

CRS # N-1499,074

Fort DuPont Historic District

East side of Route 9, south of Delaware City

Delaware City vicinity, St. Georges Hundred, New Castle
County, Delaware

Photograph taken by Caroline C. Fisher

July, 1993

Negative location DELAWARE DEPT. OF NATURAL RESOURCES AND ENVIRONMENTAL CONTROL

Perspective of southwest front & northwest side
looking east

20/23



Battery Elder

CRS # N-1499.008

Fort DuPont Historic District

East side of Route 9, south of Delaware City

Delaware City vicinity, St. Georges Hundred, New Castle
County, Delaware

Photograph taken by Caroline C. Fisher

July 1993

Negative location: DELAWARE DEPT. OF NATURAL RESOURCES AND ENVIRONMENTAL CONTROL.

View of west side of battery looking east

2/23



Mortar Battery

CRS # N-1499.005

Fort Du Pont Historic District

East side of Route 9 south of Delaware City

Delaware City vicinity, St. Georges Hundred, New Castle
County, Delaware

Photograph taken by Caroline C. Fisher

July 1993

Negative location: DELAWARE DEPT. OF NATURAL RESOURCES AND ENVIRONMENTAL CONTROL.

Viewer of corner of battery looking west

22/23



Batteries Reed & Gibson

CRS # N-1499.004

Fort DuPont Historic District

East side of Route 9, south of Delaware City

Delaware City vicinity, St. Georges Hundred, New Castle
County, Delaware

Photograph taken by Caroline C. Fisher

July 1993

Negative location DELAWARE DEPT. OF NATURAL RESOURCES AND ENVIRONMENTAL CONTROL

Perspective of west side of battery looking east

23/23