

1. THE REVEREND JOHN H. GRAY HOUSE  
709 Mesopotamia Street  
Eutaw, Greene County

Mrs. Mary Coleman Yarbrough  
709 Mesopotamia Street  
Eutaw, Alabama 35462

Lot #152; Tax Map: 35-18-28-3-7-3

Latitude: 32° 50' 53"

2.9 acres, 370' x 358'

Longitude: 87° 53' 59"

Date of Construction: c. early 1830s

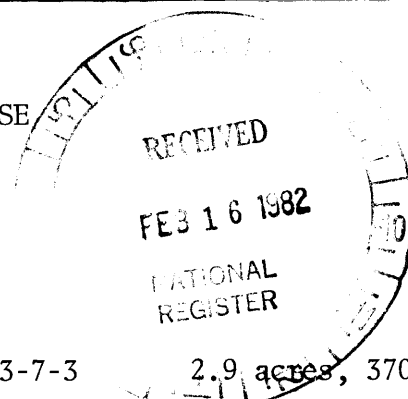
Alterations: 1839 ? for some modifications

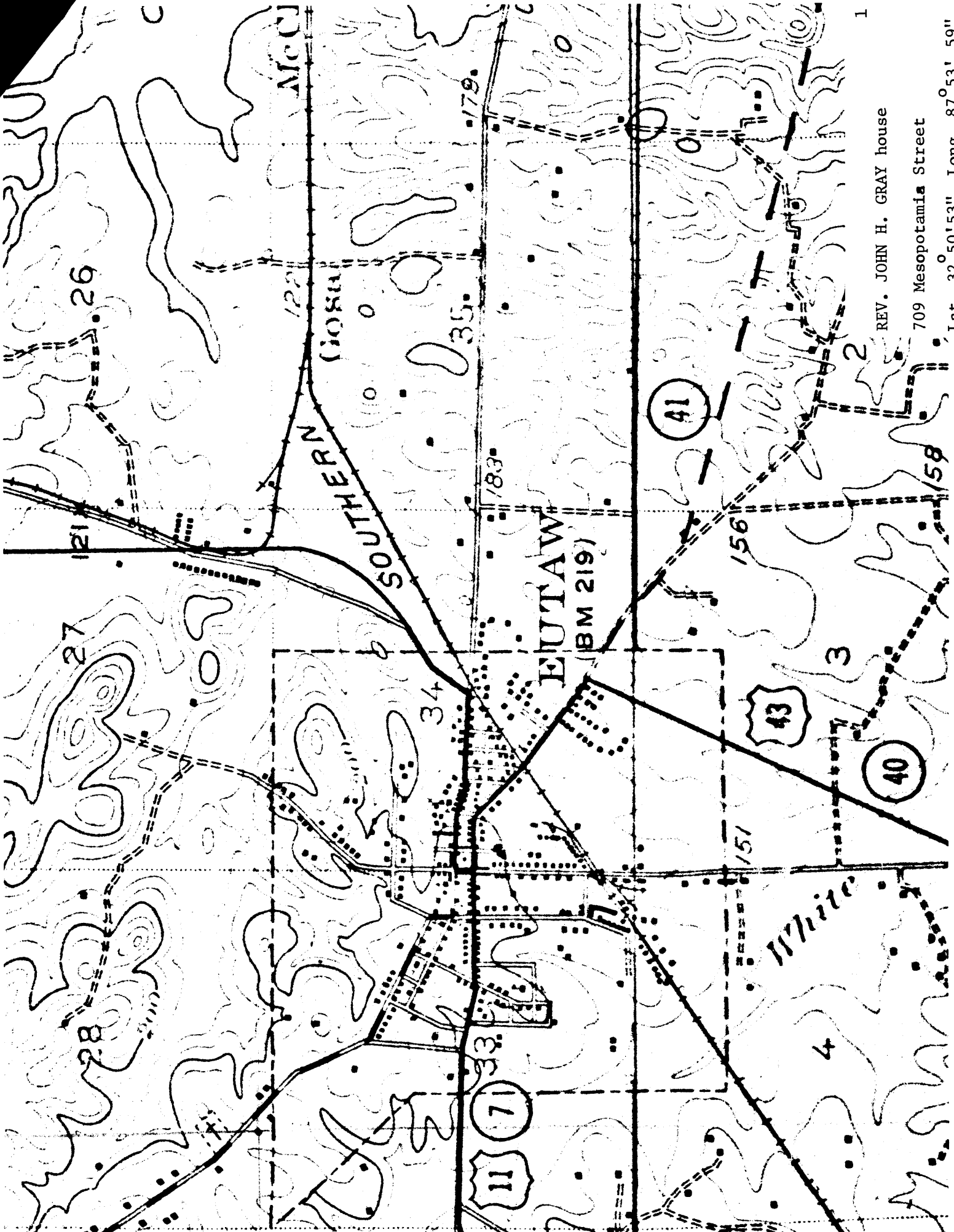
Builder/Architect unknown

Significance: This two-storied dwelling is the oldest surviving house within the corporate limits of Eutaw still standing on its original site. Although slightly altered (compare photo to drawing) it is a very good example of the I-house type with Federal period refinements.

DESCRIPTION: The original house had a balanced facade featuring nine-over-nine or six-over-nine paned sashes, and a handsomely constructed entranceway with a large semi-circular fanlight spanning not only the two double doors but also the sidelights and outer enframements. Its architectural details are quite similar to those of the nearby house (#43) constructed for John Coleman about the same time. Both the Coleman house and Gray house were equipped with window blinds having stationary louvers, with a broad horizontal brace halfway up, unresponsive to the sash division in the upper windows. The entry doors in both houses have six panels each. There are four clear glass sidelights. The frame of the front doorway has 4 1/2 inch molded facings with corner blocks having recessed circles. There is no indication that the entranceway was sheltered by a portico. A rear door was provided in the back wall, opening on a rear porch. A doorway now exists above the fan light in the center of the facade. Flush siding boards surround this doorway.

Remodeling: The early sashes have been replaced with six paned windows. The glass in the fan has been replaced with wood and ruby glass has been placed in the sidelights. A recently constructed porch is now attached to the front of the house. The staircase on the interior is simple, with square posts and banisters and round handrail. It has an open strigner and plain cut out consoles. Though it may have been partitioned off at a later date, it seems likely that the original plan of the house provided a small hall chamber at the front upstairs. On August 20, 1839, the house was acquired by James Murphy, who likely made the Greek Revival alterations that have been mentioned.

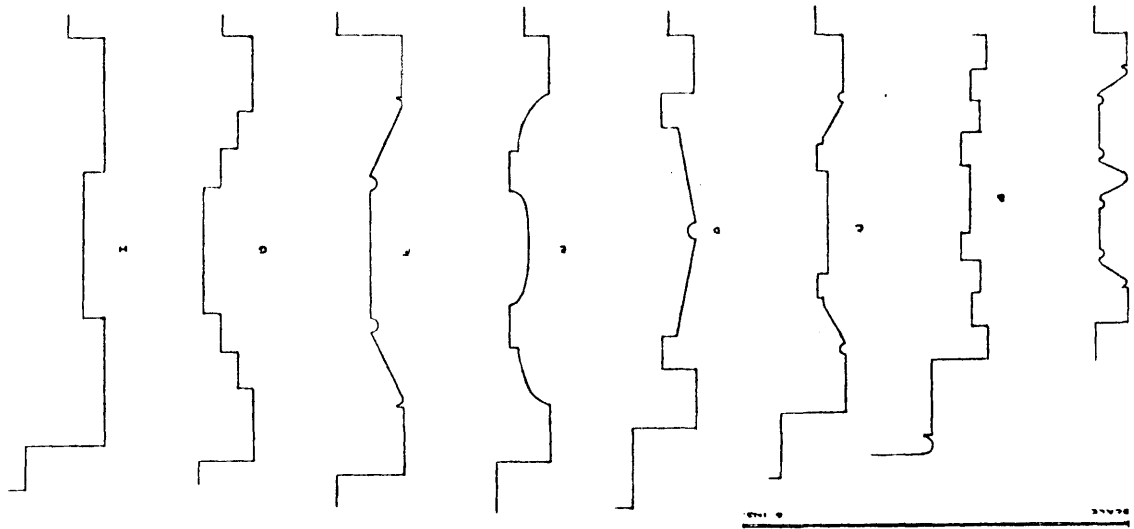




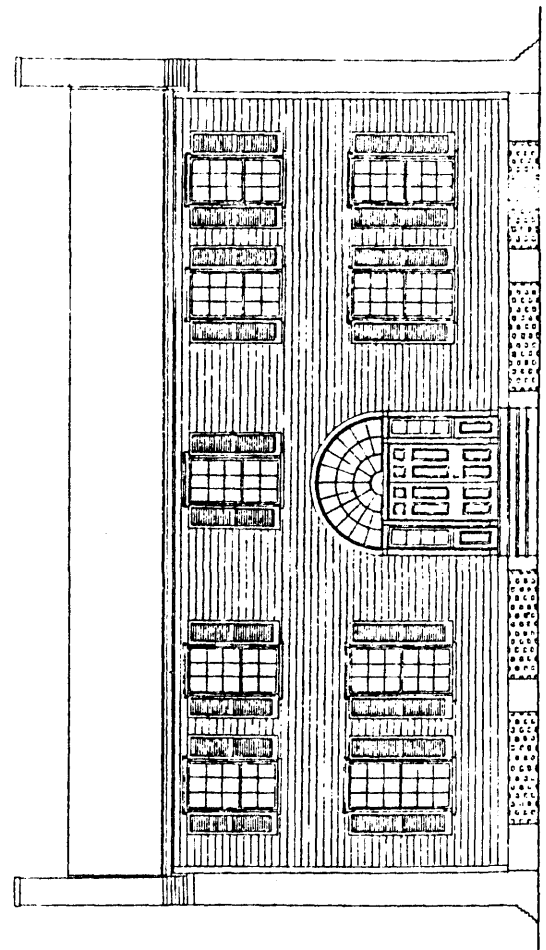
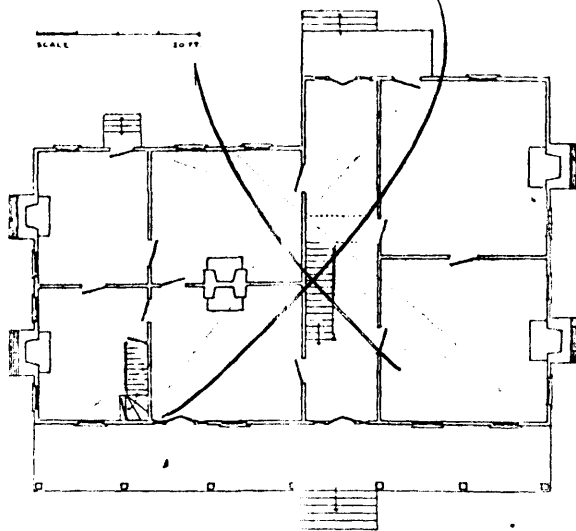
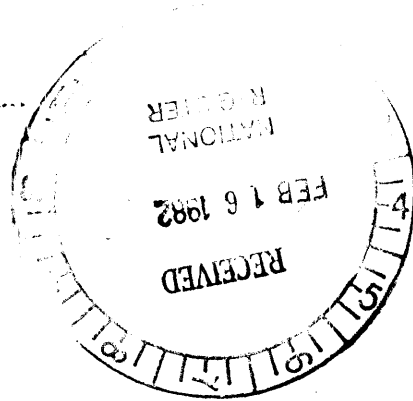
REV. JOHN H. GRAY house

709 Mesopotamia Street

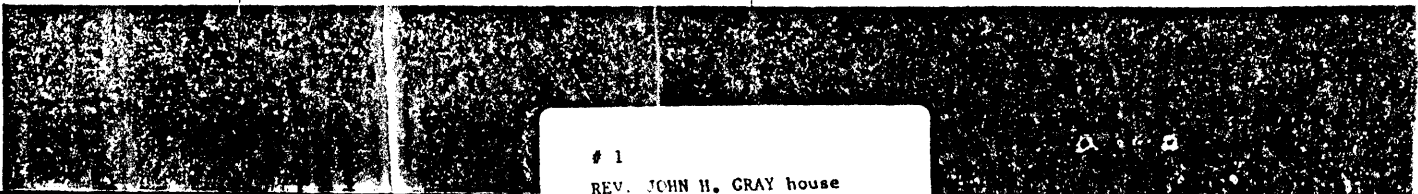
Lat. 32° 50' 53" Long. 87° 53' 59"



These drawings represent a preliminary design and are not to be used for construction purposes. They are intended for informational purposes only. All dimensions and details are subject to change without notice. © 1982 National R. G. Herber



14-7-82



# 1  
REV. JOHN H. GRAY house