

United States Department of the Interior  
National Park Service

National Register of Historic Places  
Registration Form



This form is for use in nominating or requesting determinations for individual properties and districts. See instructions in How to Complete the National Register of Historic Places Registration Form (National Register Bulletin 16A). Complete each item by marking "x" in the appropriate box or by entering the information requested. If any item does not apply to the property being documented, enter "N/A" for "not applicable." For functions, architectural classification, materials, and areas of significance, enter only categories and subcategories from the instructions. Place additional entries and narrative items on continuation sheets (NPS Form 10-900a). Use a typewriter, word processor, or computer, to complete all items.

1. Name of Property

historic name Cohasset Central Cemetery

other names/site number \_\_\_\_\_

2. Location

street & number North Main Street and Joy Place  not for publication

city or town Cohasset  vicinity

state Massachusetts code MA county Norfolk code 021 zip code 02025

3. State/Federal Agency Certification

As the designated authority under the National Historic Preservation Act of 1986, as amended, I hereby certify that this  nomination  request for determination of eligibility meets the documentation standards for registering properties in the National Register of Historic Places and meets the procedural and professional requirements set forth in 36 CFR Part 60. In my opinion, the property  meets  does not meet the National Register Criteria. I recommend that this property be considered significant  nationally  statewide  locally. ( See continuation sheet for additional comments.)

Brona Simon

November 5, 2002

Signature of certifying official/Title Brona Simon Date  
Massachusetts Historical Commission, Deputy State Historic Preservation Officer

State or Federal agency and bureau

In my opinion, the property  meets  does not meet the National Register criteria. ( See continuation sheet for additional Comments.)

Signature of certifying official/Title

Date

State or Federal agency and bureau

4. National Park Service Certification

I, hereby certify that this property is:

- entered in the National Register
  - See continuation sheet.
- determined eligible for the National Register
  - See continuation sheet.
- determined not eligible for the National Register
- removed from the National Register
- other (explain):

Signature of the Keeper

Date of Action

[Signature] Edson H. Beall 12/27/02

Cohasset Central Cemetery  
Name of Property

Norfolk County, MA  
County and State

**5. Classification**

**Ownership of Property**

(Check as many boxes as apply)

(Check only one box)

- private
- public-local
- public-State
- public-Federal

- building(s)
- district
- site
- structure
- object

**Number of Resources within Property**

(Do not include previously listed resources in the count.)

Contributing	Noncontributing	
0	0	building
1	0	sites
4	2	structures
20	0	objects
25	2	Total

**Name of related multiple property listing**

(Enter "N/A" if property is not part of a multiple property listing.)

N/A

**Number of contributing resources previously listed in the National Register**

N/A

**6. Function or Use**

**Historic Functions**

(Enter categories from instructions)

FUNERARY: cemetery

**Current Functions**

(Enter categories from instructions)

FUNERARY: cemetery

**7. Description**

**Architectural Classification**

(Enter categories from instructions)

N/A

**Materials**

(Enter categories from instructions)

foundation granite

walls brick

roof asphalt shingle

other N/A

**Narrative Description**

(Describe the historic and current condition of the property on one or more continuation sheets.)

SEE ATTACHED

**United States Department of the Interior**  
**National Park Service**

**National Register of Historic Places**  
**Continuation Sheet**

**Cohasset Central Cemetery**  
**Cohasset (Norfolk Co.), Massachusetts**

Section number 7 Page 1

**7. Narrative Description**

Active for almost three centuries and containing about 500 gravestones, Cohasset Central Cemetery (MHC# 804) is sited on a bluff, abutting and overlooking Little Harbor to the north. The rolling glaciated terrain of the 4.286-acre cemetery slopes down from North Main Street and is dotted with mature trees. Its borders are North Main Street to the south, Joy Place (formerly known as "the road to the Burying Ground") and private property to the west, and privately owned land to the east that connects to the residence at 94 North Main St. Cohasset is a coastal community on the South Shore of Massachusetts.

The Cohasset Town Common [NR] lies less than ¼ mile east of the cemetery along North Main Street. Large, well-maintained houses built in the early 1700s to the early 1900s, including one of the oldest houses in Cohasset (1713), characterize North Main Street in the vicinity of the Common. Joy Place, abutting the cemetery, features two early houses (1765 and 1808).

The cemetery is fenced on three sides with the fourth (north side) abutting Little Harbor. The main entrance (at Terrace Drive, map # 20) consists of an ornate iron gate flanked by two dressed, square, granite posts with pyramidal tops and supported by quarter-round granite blocks. Smaller, similar posts linked by metal bars border the cemetery along North Main Street. A wrought-iron gate with brass cemetery sign, reading "Cohasset Central Cemetery," centers this area. Granite posts linked by chain border Joy Place. Until removed in August 2000, a cyclone fence ran the length of the border along Joy Place. Eleven missing granite posts were found unused on the property and chain was attached to rings imbedded in those granite posts to recreate the original fencing. A network of contiguous curvilinear paths (Terrace Drive, Seaside Avenue, Central Avenue, and Westerly Avenue) winds through the northern section of the cemetery.

The cemetery has three principal sections that were acquired at different times and reflect changing burial practices and funerary art. The newest section in the north (acquired 1867-1873) is lowland that reaches to the water's edge at Little Harbor. To the south is the Old Burying Ground (1705, expanded 1787) situated on a bluff with a clear view of Little Harbor and opposite 20 Joy Place. In the southern section of the cemetery (acquired 1825), the terrain rolls down from the Old Burying Ground to a pair of granite retaining walls framing a path known as Garden Way (map # 4), which was formerly used to provide hearse access. The retaining wall along the north side of Garden Way is approximately two feet high; the one to the south is significantly higher and contains approximately seventeen sealed granite-framed in-ground vaults principally constructed into the retaining wall bordering Garden Way. From the retaining wall, the land rises up a gentle slope in the southernmost section of the cemetery. A variety of trees and manicured shrubs are interspersed throughout and along the borders.

The oldest part of the cemetery contains graves of some of Cohasset's earliest settlers. Markers are set in small rows and include many arch- and square-top stones made of gray slate and facing west to witness the rising sun on the Day of Judgment. Many different motifs can be found among the stones including winged cherubs and winged skulls. Of

(continued)

**United States Department of the Interior**  
**National Park Service**

**National Register of Historic Places**

**Continuation Sheet**

**Cohasset Central Cemetery**  
**Cohasset (Norfolk Co.), Massachusetts**

Section number 7 Page 2

particular interest among these old slates are those attributed to the first and second North River carvers (photo #1, map #5) and the father and son workshop of Jacob Vinal, Sr. (photo #2, map # 23)) and his son, Jacob Vinal, Jr. (photo #3, map #7). The oldest gravesite in the cemetery, that of Margaret Tower (photo #6, map # 11), is dated 1705. It is believed, however, that the headstone was erected several years after her death, so while Margaret Tower's is the cemetery's first grave, the first gravestone is that of Sarah Pratt (photo #1, map #5), who died in 1706.

While slate was almost universal for 18<sup>th</sup>-century gravestones, in the 19<sup>th</sup> century marble and granite emerged as fashionable materials. Particularly common was a dark gray granite quarried in Quincy, Massachusetts, known as "Quincy granite." Most of these gravestones, which are found in the southern section of the cemetery, typically include urns, obelisks, pointed-arch-top stones, scrolls, and statuary. While some markers are in rows, on the whole they are arranged in a less orderly fashion than the 18<sup>th</sup> century markers. A small number consist of a monument to a single family surrounded by stone curbing, stone posts, or cast iron fences, many of which are fabricated into a branch motif (photo #14). Some of the Victorian cast iron fencing enclosing gravesites and family plots is in need of conservation, as are some of the marble markers.

A good example of a marble and granite marker is the Jenkins family monument (photo #13, map #18), etched as follows: "Samuel B. Jenkins, died 1876 at age 37, Adeline B. Jenkins, died 1880 at age 59, and Samuel L. Jenkins, died 1886 at age 74." Resting on a square granite base, a square marble shaft is topped by a marble statue of an anguished female figure. Gazing to the heavens with her head cocked slightly to one side, she is dressed in classical attire with one hand to her breast and the other holding an anchor. The ca. 1877 marble and granite gravestone of Eliza Chadbourne (map# 21) features a pointed arch on top emblazoned with a shallow relief sprig of ivy, and a small inscribed panel set between two stylized Corinthian pilasters. Several children's stones display the common Victorian-era motif of kneeling lambs (photo #11, map# 22).

Markers in the northernmost section of the cemetery, the last section to be acquired, vary in materials and styles, but are primarily marble or granite with classical motifs. One exception is a simulated stone marker made of hollow metal belonging to members of the Tower family (map#19). In general, the graves in the north section of the cemetery are not arranged in any particular order; some are in short rows, others in clusters, and others stand alone. Newer grave markers include simple granite stones with smooth and rock-faced finishes, dating from the late 19<sup>th</sup> century to the present day. The graves of several nationally known actors who summered in Cohasset are located here. These include William Hanlon; Lawrence P. Barrett (1838-1891; Map # 16), whose marker is a large, unfinished stone standing approximately 4½ feet high engraved with his name and those of two others; and Henry W. Stuart (1836-1903), whose simple, flat, rectangular stone marker bears his stage name, Stuart Robson (map # 17).

Of specific note is the Celtic Cross monument (MHC #935; photo #15, map # 14), dedicated in 1914, which stands eighteen feet high on a low hill in the north. It consists of an intricately carved cross resting on a three-part base all made of granite. The marker features the seals of the Ancient Order of Hibernians (clasped hands, harp, rising sun, ivy and

(continued)

**United States Department of the Interior**  
**National Park Service**

**National Register of Historic Places**

**Continuation Sheet**

**Cohasset Central Cemetery**  
**Cohasset (Norfolk Co.), Massachusetts**

Section number 7 Page 3

---

shamrocks) and the L.A.A.O.H. (clasped hands, harp, ivy and shamrocks). The inscription recounts the tragic death of ninety-nine Irish emigrants who perished aboard the Brig *St. John* on October 7, 1849, of which forty-five unidentified victims are buried here. This impressive monument is the apex of the cemetery, emotionally and physically, situated as it is on a knoll, which is further defined by a columbaria wall. The view from the memorial sweeps across a panorama of markers and beyond to Little Harbor and the sea, which has dominated so much of Cohasset's past.

In addition to its gravestones, the cemetery contains a receiving tomb built circa 1873 (MHC #936; map # 15). Refurbished in 1970, it is now used as the caretaker's shed for storage of landscaping and maintenance equipment. The one-story, rectangular brick structure has rock-faced gray granite corner quoins, lintels, sills, and foundation. Iron cresting runs along the ridge of the gable roof, and courses of stepped brick form a continuous cornice around the building. Roofing material is asphalt shingle. Openings include two windows with the 6/6 sash and a large, wood-panel double door. The single-room interior still contains the six original compartments used to hold the caskets for the deceased pending burial, especially during the winter months when graves could not be easily dug. The tomb is located on the cemetery's western edge just south of the main entrance, approximately opposite 24 Joy Place, from which it is accessed.

Objects in the cemetery that are outside the period of significance include two rubblestone and slate columbaria built in the 1980s. The vaults and the columbaria are discreetly integrated into the contour of the land and do not affect the cemetery's visual integrity. While all cemetery plots for full burials have been sold, some are as yet unused. Since new sales are for cremated remains only, it is anticipated that the general characteristics of the cemetery will not change significantly in the coming years. The cemetery's overall appearance reveals that it has been well maintained, and although a few elements (such as a handful of headstones and even fewer iron fences) are in need of repair, the vast majority of its resources are in excellent condition.

**Archaeological Description**

While no ancient Native American sites are located in the cemetery, it is possible that sites are present. Four sites have been recorded in the general area (within one mile). Environmental attributes of the cemetery and surrounding locale represent locational criteria (slope, soil drainage, proximity to wetlands) that are favorable for ancient Native American settlement. Soil types in the area are excessively drained and formed in glacial outwash. Topography in the cemetery is characterized by rolling terrain with level to moderately sloping land surfaces generally sloping down from North Main Street. The cemetery is situated on a bluff overlooking Little Harbor and the Atlantic Ocean to the north and a freshwater wetlands and stream to the west. The overall proximity of the cemetery to both a marine and upland/fresh water related ecosystem indicates a wide variety of flora and fauna would have been available for Native American subsistence and settlement activities. Given the above information and impacts associated with the excavation of over 500 graves on the relatively small parcel (4.286 acres), a moderate potential exists for locating ancient Native American resources on the cemetery property.

(continued)

Cohasset Central Cemetery

Name of Property

**8. Statement of Significance**

**Applicable National Register Criteria**

(Mark "x" in one or more boxes for the criteria qualifying the property for National Register listing.)

- A** Property is associated with events that have made a significant contribution to the broad patterns of our history.
- B** Property is associated with the lives of persons significant in our past.
- C** Property embodies the distinctive characteristics of a type, period, or method of construction or represents the work of a master, or possesses high artistic values, or represents a significant and distinguishable entity whose components lack individual distinction.
- D** Property has yielded, or is likely to yield, information important in prehistory or history.

**Criteria Considerations**

(Mark "x" in all the boxes that apply.)

Property is:

- A** owned by religious institution or used for religious purposes.
- B** removed from its original location.
- C** a birthplace or grave.
- D** a cemetery.
- E** a reconstructed building, object, or structure.
- F** a commemorative property.
- G** less than 50 years of age or achieved significance within the past 50 years.

**Narrative Statement of Significance**

(Explain the significance of the property on one or more continuation sheets.)

**9. Major Bibliographical References**

(Cite the books, articles, and other sources used in preparing this form on one or more continuation sheets.)

**Previous documentation on file (NPS):**

- preliminary determination of individual listing (36 CFR 67) has been requested
- previously listed in the National Register
- previously determined eligible by the National Register
- designated a National Historic Landmark
- recorded by Historic American Buildings Survey #
- recorded by Historic American Engineering

Norfolk County, MA

County and State

**Areas of Significance**

(Enter categories from instructions)

COMMUNITY PLANNING AND DEVELOPMENT

ART

SOCIAL HISTORY

**Period of Significance**

1705-1952

**Significant Dates**

N/A

**Significant Person**

(Complete if Criterion B is marked above)

N/A

**Cultural Affiliation**

N/A

**Architect/Builder**

N/A

**Primary location of additional data:**

- State Historic Preservation Office
- Other State agency
- Federal agency
- Local government
- University
- Other

Name of repository:

Cohasset Central Cemetery, Cohasset Historical Society

United States Department of the Interior  
National Park Service

National Register of Historic Places  
Continuation Sheet

Cohasset Central Cemetery  
Cohasset (Norfolk Co.), Massachusetts

Section number 8 Page 1

**8. Statement of Significance**

Cohasset Central Cemetery contains the oldest burying ground in the town of Cohasset, with graves dating from 1705 to the present. From slate to marble, then to granite and now often back to slate, its markers are witness to the passage of time, to changing fortune, custom and style, all tempered by the individual tastes of those who placed them here. The peaceful setting and its accessibility to the Town Village draw visitors, recreational walkers, and researchers through all seasons. The vista of Little Harbor and the Atlantic Ocean beyond speaks to the seafaring history of Cohasset.

The cemetery is eligible for the National Register under Criterion A and C at the local level, and fulfills Criteria Consideration D for cemeteries with distinctive design features. Cohasset Central Cemetery retains integrity of location, setting, materials, design, workmanship, feeling, and association. The demographics of those buried in the cemetery reflect Cohasset's historical development. They include late 17<sup>th</sup>-century settlers, members of prominent 18<sup>th</sup>- and 19<sup>th</sup>-century seafaring families, Portuguese and Irish immigrants, military veterans from the Revolutionary, Civil, and two World Wars, and wealthy 19<sup>th</sup>- and 20<sup>th</sup>-century summer residents, including several well-known actors. The cemetery is also significant as the burial site of the victims of the shipwreck of the brig *St. John*, which sank off the shore of Cohasset in 1849. In addition, Cohasset Central Cemetery is significant for its excellent collection of gravestone art. Well-represented is the work by the Scituate school of stone carvers: the first and second North River carvers (1700-1778) and the Vinals, father and son (c.1715-1781). In addition to stones from these carvers, the cemetery contains several children's stones from the Ebenezer Soule, Jr. (1758-1773) workshop of Plympton. The cemetery's funerary art also includes other 18<sup>th</sup> century slate stones with winged cherub and winged skull motifs; 19<sup>th</sup> century marble stones with willow and urn, obelisks, scrolls, statuary and pointed arch forms; and 20<sup>th</sup> century granite monuments ranging from simple stones to the elaborate Celtic Cross commemorating the victims of the wreck of the *St. John*.

Located near the town common and village center, the cemetery was established in the first years of the 18<sup>th</sup> century to serve the Conahasset area of Hingham, which became Cohasset. The Conahasset lands were surveyed and divided up among qualified landowners in 1670, after which settlement began. In 1717, the General Court of the Province of Massachusetts Bay set Cohasset off as the second parish and second precinct of Hingham. The change in name from Conahasset to Cohasset dates from that time.

Originally located on common land and administered by the town, the "center burying ground" was laid out near the main road from Conahasset to Hingham, today's North Main Street. The "road to the burying ground" is now Joy Place, which runs along the western boundary of the cemetery. The street was renamed in the first half of the 19<sup>th</sup> century for Captain Joseph Joy, whose 1808 house stood at the beginning of the lane. The cemetery served the largest population center in the newly settled area, which extended from the boundary at North Scituate to the shore at Jerusalem Road. This represented the extent of the first and second divisions of land in Conahasset. Three other cemeteries were laid out in Cohasset in the 18<sup>th</sup> century. They include Beechwood Cemetery, which is still active, in the village of Beechwood; Green Gate Cemetery in North Cohasset, which was active until the 1960s; and Cedar Street Cemetery, which served a group of families on Hull Street and North Main Street until 1867.

(continued)

**United States Department of the Interior**  
**National Park Service**

**National Register of Historic Places**  
**Continuation Sheet**

**Cohasset Central Cemetery**  
**Cohasset (Norfolk Co.), Massachusetts**

Section number   8   Page   2  

The earliest burial in the Cohasset Central Cemetery is that of Margaret (Hardin) Tower (d. 1705), who with her husband, Ibrook, was among the first settlers of Cohasset. Although Margaret Tower was the first burial in the cemetery, the oldest gravestone in the cemetery is that of Sarah Pratt, who died in 1706. Margaret Tower's stone was placed on her grave several years later. Members of Cohasset's founding families buried here include the first minister to the Parish at Conahasset, Rev. Nehemiah Hobart, and his wife, who died in 1736 and 1741 respectively. The third minister in Cohasset, Rev. John Browne, who was a prominent advocate of liberty during the Revolution, also was buried in Cohasset Central Cemetery upon his death in 1791. The names of other founding families such as Tower, Pratt, Lincoln, Bates, Beal, Whitcom, and Hobart grace many early gravestones in the burial ground. Mordecai Lincoln (d. 1808), son of Isaac Lincoln and grandson of Mordecai of North Scituate who had operated mills and a small iron works on Turtle Island, also is buried here.

The earliest gravestones in Cohasset Central Cemetery are primarily made from gray slate. Many carry death's head motifs (photos #1-5), which dually symbolized the inevitability of death (skull) and the immortality achieved through religious redemption (wings). Well-represented in the cemetery is the work by the Scituate school of stone carvers: the first and second North River carvers (1700-1778) and the father and son workshop of Jacob Vinal Sr. and Jr. (1715-1781). In addition to these local workshops, the cemetery contains children's stones from the Ebenezer Soule, Jr. workshop of Plympton (1758-1773), bearing their signature "Medusa" heads with wild, wavy hair, as seen on the Job Nichols Marker (Map#24).

The gravestone images cut by these carvers were the first and purest form of folk art that originated in the American colonies, and they provide a unique sensibility of the period, its belief system and style progression. For example, the death's head executed by the first and second North River carvers remained their symbol for over fifty years, unaffected by stylistic change taking place in the surrounding burial grounds.

Their material and tools limited the artistic efforts of the carvers. The slate they quarried originated from a bed in the western part of what was then Scituate, but is now Hanover. It was geologically mature with a dense, hard texture and was extremely difficult to cut with the poor steel tools available. To avoid splitting the stone, the North River carvers devised a cutting method that produced a triangular notch in the slate. These small notches were arranged into starbursts, borders, and winged skulls, a technique that continued to distinguish their work, even after a softer slate was employed. For example, the gravestone of the Reverend Nehemiah Hobart (photo #5, map #12) displays an intricate border of Catherine wheels and sand dollars, the latter a nod to nearby local oceanic life.

The Vinal family of stone carvers, consisting of father Jacob and son Jacob, Jr. were prolific and carved up to four hundred stones in the northern Plymouth County area as well as Cohasset and Braintree. Jacob Vinal, the father, probably learned to cut stone from the first North River carver, since much of their decorative work (hammered starbursts, flowers and border designs) was similar. Vinal was unique, however, in introducing smiles into his carved images of spirit skulls. This motif was in contrast to the gloomy skull caricatures employed by the North River carver. One example of a Vinal smiling skull can be seen on the Aaron Pratt gravestone (photo #2, map # 23).

**(continued)**

**United States Department of the Interior  
National Park Service**

**National Register of Historic Places  
Continuation Sheet**

**Cohasset Central Cemetery  
Cohasset (Norfolk Co.), Massachusetts**

Section number   8   Page   3  

One symbol that appears to have been carved only in the year 1741 was that of the heart-mouth (photo #3, map #7) on the Vinal spirit skulls, a symbol that temporarily replaced the usual slanting teeth. It has been suggested that this symbol shift represents a specific sentiment tied to the religious revivals of the period. Cohasset has three of the thirteen known heart-mouths in the region. They are found only on children's gravestones, and in Cohasset they belong to the Stetson family. Of the five Stetson children's stones, three of them bear the heart-mouth: Ezekiel (d. 1732), John (d. 1740) and Lydia (d. 1741).

The style progression that is present on the gravestone carvings in Cohasset Central Cemetery has been connected to the ideologies manifested in Puritan Massachusetts in the 17<sup>th</sup> and 18<sup>th</sup> centuries. It has been theorized that the decline of death head images coincides with the decline of orthodox Puritanism, which was influenced by the religious revival movement of the 18<sup>th</sup> century known as the Great Awakening. The exclusivity of the predestination doctrine was cast aside and a new doctrine offered salvation for all. New images, which reflected release of the spirit in the form of cherubim with human faces, began to appear on gravestones. Fleishy facial images began to replace the skeletal caricatures that had been the only symbol allowed. These human faces and cherubim can be seen in the Cohasset Central Cemetery, as adapted by Jacob Vinal, Jr. and other unknown carvers.

The Great Awakening of the 1740s and the promotion of the idea that salvation was available to all, not just an elect few as Puritan doctrine held, ultimately resulted in a secularization of funerary art in New England. Cohasset Central Cemetery's stones reflect the loosening of religious strictures and an abandonment of religious iconography in stone motifs. By the time of the American Revolution, classical ornament such as urns, swags, and willows associated with the democracies of Greece and Rome became popular. White marble also began to supercede gray slate as the preferred gravestone material, though classical motifs also appear on many gray slate stones in Cohasset Central Cemetery. As death became associated more with gentle rest than the doorway to judgment, Americans increasingly began calling burying grounds by the term "cemetery" or dormitory.

While little is known about the identity of the North River Carvers, the Vinal family of Scituate is well documented. Jacob Vinal (1670-1736) and Jacob Jr. (1700-1788) were the principal gravestone suppliers for Scituate, Cohasset, and Hingham for about eighty years. Jacob, Sr. took up gravestone carving when he was about forty years old, sharing a quarry with the first North River carver. Credited with about 100 stones carved over the last three decades of his life, he died a wealthy man, suggesting that he was active in more endeavors than gravestone carving. Jacob Vinal, Jr., who had assisted his father, continued to carve slate markers into his later years, producing some 200 to 300 gravestones and expanding the range of his business into Braintree and Marshfield. Upon his death, he transferred his slate quarry to his son Jacob, who did not take up carving, ending the gravestone-carving era of the Vinal family.

The community of Cohasset grew steadily over the course of the 18<sup>th</sup> century, more than doubling its population by the Revolutionary War. Cohasset colony became the second precinct of Hingham in 1717 and was incorporated as the Town of Cohasset in 1770. The community was quickly moving from a primarily agricultural economy to one based on maritime pursuits such as commercial fishing and shipping. As the population of Cohasset grew and the first generation of settlers began to pass away, the town of Cohasset saw the need to make an official survey of the "center burying ground" and plan for its expansion. In 1787, a committee made up of residents Samuel Bates, Deacon Abel

(continued)

**United States Department of the Interior**  
**National Park Service**

**National Register of Historic Places**  
**Continuation Sheet**

**Cohasset Central Cemetery**  
**Cohasset (Norfolk Co.), Massachusetts**

Section number 8 Page 4

Kent, Micah Nichols, and Joseph Beal was organized to carry out these duties. The committee documented the burying ground with a crude map and carried out a land swap with an adjacent owner to increase the size of the burying ground and straighten the line of the "road to the burying ground" from North Main Street (Joy Place). The committee records the burying ground as being one acre, 134 rods in 1787. Nearly 35 years later, in 1825, Cohasset Central Cemetery was expanded again when Samuel and Joanna Bates deeded the town  $\frac{3}{4}$  of an acre of land between the burying ground and North Main Street to increase useable space.

Fishing, shipbuilding, salt making, and other maritime trades peaked in Cohasset between 1845 and 1855, when the fishing industry alone employed 400 men and 44 vessels. As Cohasset's maritime economy grew in the mid-19<sup>th</sup> century, the names of seafaring families such as Lothrop, Larry, Snow, Bailey, and Tilden began appearing on stones in Cohasset Central Cemetery. Several gravestones read simply "Lost at Sea" and mark empty graves. Portuguese names also began to appear on stones in the 19<sup>th</sup> century, reflecting the rising immigration of that group to the area between 1845 and 1875. Several Civil War veterans and men killed in action are buried in Cohasset Central Cemetery. Most prominent among them is Levi B. Gaylord, who won the Congressional Medal of Honor for heroic action at Fort Stedman, VA. He is Cohasset's only known Congressional Medal of Honor recipient. The memorial stones of many of the town's leading citizens in the 19<sup>th</sup> century, such as clergymen, doctors, merchants, ship owners, farmers, fishermen, and craftsmen, also appear in Cohasset Central Cemetery. Deacon Abel Kent, who surveyed the burying ground in 1787, died at age 93 in 1859 and is buried here, as is the Rev. Joseph Osgood, who was the minister of the First Parish for over fifty years and a leading citizen in Cohasset's civic life. Osgood helped to establish the first central school system, and the elementary school of this system bears his name. Osgood also was instrumental in establishing the Town's first public library. His interest in education and knowledge was carried over to his leadership on the first Committee on Town History, which sponsored Bigelow's *Narrative Histories* and Davenport's *Genealogies*. The Rev. Osgood died in 1898.

Cohasset's picturesque, rocky coastline has attracted summer tourists since the mid-1820s. By the late-19<sup>th</sup> century, Cohasset was popular as a summer resort destination, particularly for wealthy businessmen and their families from Boston. The Sears, Codmans, and Appletons, to name a few, were regular summer visitors by 1872. These part-time residents built cottages and large summer homes with ocean views along Jerusalem Road and Atlantic Avenue. Some summer visitors eventually became year-round residents and are buried in Cohasset Central Cemetery. The well-known Boston Brahmin names of Seaver, Richardson, Sears, and Howe all appear on stones in the cemetery. Clarence Barron, the founder of the Boston News Bureau, *Barron's* magazine, *National Financial Weekly*, and one-time owner of the *Wall Street Journal*, was a long-time summer resident of Cohasset and a local philanthropist. His two granddaughters, Jessie Bancroft Cox and Jane Bancroft Cook are buried in Cohasset Central Cemetery.

A large number of nationally known actors and theater personalities also summured in Cohasset in the late 19<sup>th</sup> century. The locations of their residences, clustered near Cohasset Harbor, were known variously as Actors' Row and Brass Button Avenue. Two recognized thespians, tragedian Lawrence P. Barrett (d. 1891) and comedic actor Henry W. Stuart (d. 1903) are buried in Cohasset Central Cemetery along with members of their families. Stuart's grave carries his stage name, Stuart Robson, and is located with Barrett's in the northern section of the cemetery, near the water's edge. William Hanlon, a member of the Hanlon Brothers pantomime theater company and an acknowledged pioneer of vaudeville, is also buried in Cohasset Central Cemetery. Hanlon formed his theater company with his five brothers upon

(continued)

United States Department of the Interior  
National Park Service

National Register of Historic Places

Continuation Sheet

Cohasset Central Cemetery  
Cohasset (Norfolk Co.), Massachusetts

Section number 8 Page 5

emigrating to the U.S. from England, where they had performed acrobatic and aerial shows. By the time they moved to Cohasset, where they kept a practice studio, the Hanlon Brothers were working as producers and directors. William lived on Jerusalem Road, and his brother Edward lived on Sohier Street.

In 1867, the Town of Cohasset turned Cohasset Central Cemetery over to a private association of townspeople. That same year, Edward Everett Tower conveyed a parcel of land north of the original burying ground, bringing the acreage of the cemetery up to the road line of North Main Street. Another gift of land came in 1873, when Cohasset resident Charles S. Bates donated a tract of land in the northwest portion of the cemetery. The addition of this acreage brought the cemetery to its present 4.286-acre form. Charles Bates also donated funds to construct the brick receiving tomb (now a caretaker's building; map #15). A hearse road called Garden Way (map # 4) was cut into the southern valley of Cohasset Central Cemetery ca. 1873, stretching east to west from Joy Place to near the water's edge.

The late 19<sup>th</sup> and early 20<sup>th</sup> centuries brought significant economic change to the town of Cohasset as fishing and other maritime industries died out in the 1880s. The community retained a diverse economy of agriculture, summer tourism, various trades, and some manufacturing. The period between 1850 and 1915 also saw a major influx of Azorean Portuguese, Irish, and Italian immigrants into the town. The remains of forty-five Irish immigrants killed in the wreck of the brig *St. John* are buried in Cohasset Central Cemetery in a common grave below the top of the north hill. The brig, which was carrying famine refugees from the Irish counties of Galway and Clare, was bound for Boston in October of 1849 when a storm blew the vessel off course as it approached Massachusetts Bay. The ship anchored near Minot's Lighthouse outside Cohasset Harbor to ride out the storm, but the anchors failed to hold. The ship ran aground on submerged ledge and broke into two pieces. Out of 120 passengers and crew, only twenty-one survived the wreck. Writer Henry David Thoreau visited Cohasset after reading of the wreck in the Boston newspaper. Thoreau later recounted the story of the *St. John* in the first chapter of his book, *Cape Cod*. The Rev. Joseph Osgood of the Cohasset Unitarian Church initially performed services, but this was not acceptable to the Catholic Church, which dispatched Father John Roddan of St. Mary's Parish in West Quincy to perform another service. This burial represented the first Catholic presence in the Town of Cohasset. Though buried and memorialized in 1849, it was not until 1914 that the gravesite was officially commemorated with a marker. That year, the Ancient Order of Hibernians erected an 18-foot Celtic cross to commemorate the death of all ninety-nine Irish citizens aboard the *St. John*. The Celtic Cross bears the seals of the Ancient Order of Hibernians and its Ladies Auxiliary. It reads:

This Cross was erected and dedicated May 30, 1914 by the A.O.H. and L.A.A.O.H. of Massachusetts to mark the final resting place of about forty five Irish emigrants from a total company of ninety nine who lost their lives on Grampus Ledge, off Cohasset, October 7, 1849 in the wreck of the brig *St. John* from Galway, Ireland. R.I.P.

As the 20<sup>th</sup> century progressed, many World War I and World War II veterans were also buried in Cohasset Central Cemetery. Their graves are marked by flag stands given by the American Legion Post and Veterans of Foreign Wars Cohasset chapters. More recently, prizewinning sculptor and farmer Richardson White was buried here upon his death in 1993. The White Family has resided in Cohasset on their Jerusalem Road farm, called Holly Hill, since the 1840s. Mr.

(continued)

**United States Department of the Interior  
National Park Service**

**National Register of Historic Places  
Continuation Sheet**

**Cohasset Central Cemetery  
Cohasset (Norfolk Co.), Massachusetts**

Section number 8 Page 6

White's artistic subject matter focused primarily on horses. His work "Great Horse" is part of the collection of the Museum of Fine Arts, Boston, and his "Rearing Thoroughbred" is installed outside the Massachusetts Society for the Prevention of Cruelty to Animals in Jamaica Plain, Massachusetts.

The board of the Cohasset Central Cemetery continues to manage and maintain the cemetery. Alongside the "Old Slates" and the marble or granite stones of earlier times are two 20<sup>th</sup>-century columbaria. One of the first on the South Shore, the Cumner Columbarium (Map #25) was constructed in 1982. Named after a former president of the cemetery association, it stands along Joy Place. A larger facility, the Tower Columbarium (Map #26) was added in 1988. It is named for a former treasurer of the Cemetery and direct descendant of the first person to be buried in Cohasset Central Cemetery. This additional space has provided for the future of this Colonial Burying Ground whose roots go back beyond the town itself but whose eyes are still upon the future.

**Archaeological Significance**

Since patterns of ancient Native American settlement in Cohasset are poorly understood, any surviving sites could be significant. Ancient sites in this area may contribute important information on the social, cultural and economic relationship between Native populations in Cohasset area and Native core settlement areas to the north in the Boston Harbor locale and south in the North River and Plymouth Harbor area. Ancient sites in the cemetery locale may contain information that documents the effects of seas level rise through time and how Native settlement and subsistence were influenced by changes in the marine and upland based ecosystems that characterize the surrounding area. During the period of ancient Native American settlement in the northeast, the Cohasset Central Cemetery locale was transformed from an inland/upland location with adjacent freshwater wetlands to a coastal area including those same characteristics.

Historic archaeological resources described above have the potential to contribute important social, cultural and economic information on the Town of Cohasset and its population as it evolved from an agricultural settlement in the 17<sup>th</sup> century to a maritime-based community in the 18<sup>th</sup> and 19<sup>th</sup> centuries. Additional historical research combined with archaeological testing may help reconstruct the evolution, boundaries and internal configuration of graves in the cemetery as it evolved from an 18<sup>th</sup> century public burial ground to a 19<sup>th</sup> century private cemetery. Unmarked graves may contribute important information relating to individuals and their larger social grouping within the town. Unmarked graves, intentionally unmarked or originally identified with markers that deteriorated long ago, may contribute important information on the overall treatment of paupers and other indigent persons by the town and local population. Artifacts, skeletal remains and mortuary treatment of paupers may contribute information on the physical condition and pathologies of Cohasset's less fortunate citizenry. Unmarked graves resulting from lost gravestones and associated with the town's more affluent citizens can also contribute important information on the physical condition and pathologies that effected townspeople in agricultural and maritime trades. Detailed analysis of mortuary contexts, artifact and skeletal remains in all unmarked graves may contribute information on the social, cultural and economic status of individuals and groups within the overall Cohasset community. Comparatively and as a whole, unmarked graves and known burials in the cemetery can contribute important information on the population of an 18<sup>th</sup> and 19<sup>th</sup> century seacoast community specialized in maritime trades. The location of unmarked graves can also help accurately establish the overall boundaries

(continued)

**United States Department of the Interior  
National Park Service**

**National Register of Historic Places  
Continuation Sheet**

**Cohasset Central Cemetery  
Cohasset (Norfolk Co.), Massachusetts**

Section number   8   Page   7  

of the cemetery through time and subdivisions with the cemetery. Cemetery boundaries may have been unclear by late in the 18<sup>th</sup> century as indicated by the town's authorization to survey the Burial Ground boundaries late in the 1700's. This factor combined with ca. 1850 and ca. 1875 dates for cemetery fences and the common practice of burying paupers and unknown persons in a peripheral area or outside the cemetery boundary may indicate the potential for inaccurate boundaries in several areas that changed through time. Historical research and post-hole distributions obtained through archaeological testing can also identify the location of earlier fences and boundary markers that may have existed. Artifacts recovered through archaeological survey and testing associated with memorial services for individuals and groups of graves may also contribute important information on Cohasset's population and ethnic immigrants beginning late in the 19<sup>th</sup> century. The mass grave associated with 45 Irish immigrants may contain a wealth of information relating to the overall health and physical characteristics of Irish immigrants in the mid-nineteenth century. Gravestones and their associated art and inscriptions identified with extant stones and those found archaeologically may also contribute important social, cultural and economic information on the Cohasset population over 300 years.

(end)

**United States Department of the Interior**  
**National Park Service**

**National Register of Historic Places**  
**Continuation Sheet**

**Cohasset Central Cemetery**  
**Cohasset (Norfolk Co.), Massachusetts**

Section number   9   Page   1  

---

**Major Bibliographical References**

- Barrett, Dierdre. "The North River Carvers and the Jacob Vinal Workshop: The Scituate School of Gravestone Cutters 1700-1780." Thesis, Smith College, Northampton, MA, 1993.
- Benes, Peter. The Masks of Orthodoxy. Amherst, MA: University of Massachusetts, 1977.
- Bigelow, E. Victor. A Narrative of Cohasset, Massachusetts. Cohasset, MA: Committee on Town History, 1898.
- Cappers, Elmer O. Place Names in Norfolk County, Massachusetts. Publication place unknown: Norfolk County Trust, no date.
- Cohasset Historical Society. A Quick Guide to Cohasset Heritage Trail Houses. Cohasset, MA: Cohasset Historical Society, 1998.
- Cohasset Historical Society Clippings Files, Cohasset, MA, various dates.
- Davenport, George Lyman and Elizabeth Osgood. The Genealogies of the Families of Cohasset, Massachusetts. Cohasset, MA: Committee on Town History, 1909.
- Deetz, James. In Small Things Forgotten: an Archaeology of Early American Life. New York: Doubleday, 1996.
- Ford, JoAnn and Anne Montague. "Massachusetts Historical Commission Application for Individual Nominations to the National Register of Historic Places, Cohasset Central Cemetery," January, 2001.
- Hurd, D. Hamilton. History of Norfolk County, Massachusetts with Biographical Sketches of Many of its Pioneers and Prominent Men. Philadelphia: J.W. Lewis & Co., 1884.
- Leonard, Roger. We Protect: An Historical Account and Social Study of the Portuguese in Cohasset, Massachusetts. Cohasset, MA: Paul Pratt Memorial Library, no date.
- Massachusetts Historical Commission. Inventory forms for Cohasset, MA. Historic and Archaeological Resources of the Commonwealth. Boston: Massachusetts Historical Commission.

(continued)

**United States Department of the Interior**  
**National Park Service**

**National Register of Historic Places**  
**Continuation Sheet**

**Cohasset Central Cemetery**  
**Cohasset (Norfolk Co.), Massachusetts**

Section number   9   Page   2  

---

Massachusetts Historical Commission. Maker Index. Historic and Archaeological Resources of the Commonwealth. Boston: Massachusetts Historical Commission.

Norling, Kristin. Stories of Cohasset. Cohasset, MA: Cohasset Schools, 1962.

Pratt, Burtram J. A Narrative History of the Town of Cohasset, Massachusetts, Volume 2. Cohasset, MA: Committee on Town History, 1956.

Public Archaeology Labs. "Cultural Resource Above-Ground Historic Resources of Cohasset," V, Part 1, 2000.

Wadsworth, David. Interview with authors. November, 2000 and March, 2002.

Wadsworth, David and Betsy Friedberg. "National Register of Historic Places Inventory, Nomination Form for Cohasset Common Historic District, Cohasset, MA," 1995.

**(end)**

Cohasset Central Cemetery  
Name of Property

Norfolk County, MA  
County, State

## 10. Geographical Data

**Acreage of Property** 4.286 acres

**UTM References** See continuation sheet.

(Place additional UTM references on a continuation sheet)

1. 19 Zone	350800 Easting	4678580 Northing	3. Zone 19	Easting 350910	Northing 4678350
2. 19 Zone	350880 Easting	4678470 Northing	4. 19 Zone	350860 Easting	4678360 Northing

See continuation sheet

## Verbal Boundary Description

(Describe the boundaries of the property on a continuation sheet.)

## Boundary Justification

(Explain why the boundaries were selected on a continuation sheet.)

## 11. Form Prepared By

name/title Sarah Griffith, Edward Stanley, Elaine Stiles, JoAnn Ford and Anne Montague with Betsy Friedberg, MHC NR Director

organization Massachusetts Historical Commission date November 2002

street & number 220 Morrissey Boulevard telephone (617) 727-8470

city or town Boston state MA zip code 02125-3314

## Additional Documentation

**Submit the following items with the completed form:**

**Continuation Sheets**

### Maps

A **USGS map** (7.5 or 15 minute series) indicating the property's location.

A **sketch map** for historic districts and properties having large acreage or numerous resources.

### Photographs

Representative **black and white photographs** of the property.

**Additional items** (Check with the SHPO or FPO for any additional items)

## Property Owner

(Complete this item at the request of the SHPO or FPO.)

name Cohasset Central Cemetery

street & number 44 Ripley Road telephone 781-383-1436

city or town Cohasset state MA zip code 02025

**Paperwork Reduction Act Statement:** This information is being collected for applications to the National Register of Historic Places to nominate properties for listing or determine eligibility for listing, to list properties, and to amend existing listings. Response to this request is required to obtain a benefit in accordance with the National Historic Preservation Act, as amended (16 U.S.C. 470 et seq.).

**Estimated Burden Statement:** Public reporting burden for this form is estimated to average 18.1 hours per response including the time for reviewing instructions, gathering and maintaining data, and completing and reviewing the form. Direct comments regarding this burden estimate or any aspect of this form to the Chief, Administrative Services Division, National Park Service, P.O. Box 37127, Washington, DC 20013-7127; and the Office of Management and Budget, Paperwork Reductions Project (1024-0018), Washington, DC 20503.

**United States Department of the Interior**  
National Park Service

**National Register of Historic Places**  
**Continuation Sheet**

**Cohasset Central Cemetery**  
**Cohasset (Norfolk Co.), Massachusetts**

Section number 10 Page 1

---

**UTM References (continued)**

5. 19.	350700	4678550
Zone	Easting	Northing

**Verbal Boundary Description**

See attached Cohasset assessors map, sheet 19, plot 20.

**Boundary Justification**

The boundaries include the original burying ground set off in the early 18<sup>th</sup> century and land donated by various residents in 1787, 1825, 1867, and 1873 to expand the cemetery to its present 4.286-acre size.

**(end)**

**United States Department of the Interior**  
National Park Service

**National Register of Historic Places**  
**Continuation Sheet**

**Cohasset Central Cemetery**  
**Cohasset (Norfolk Co.) Massachusetts**

Section number photo Page 1

---

**PHOTOGRAPHS**

Photographs by Lynne Layman, November/December, 2000

1. Gravestone of Sarah Pratt, d.1706,
2. Gravestone of Aaron Pratt, d. 1735/6
3. Gravestone of Ezekiel Stetson, d. 1732
4. Gravestone of John Jacob Hobart, d. 1735
5. Gravestone of Rev. Nehemiah Hobart, d. 1740
6. Gravestone of Margaret Tower, d. 1705
7. Gravestone of Ibrook Tower, d. 1732
8. Gravestone of Daniel Tower, d. 1774
9. Gravestone of Thomas Stevenson, d. 1775
10. Gravestone of Sarah Neal, d. 1841
11. Gravestones of Lulu (d.1865), Jennie (d. 1867) and Linda (d. 1862) with lamb motif.
12. Gravestones of the Cousins family, erected 1870/80
13. Gravestone of Samuel L. Jenkins, d. 1886
14. Gravestone of Lothrop family, mid-1800s
15. Celtic Cross, 1914
16. Overview of Cohasset Central Cemetery

**(end)**

CENTRAL CEMETERY  
Cohasset (Norfolk County)  
Massachusetts  
Representative Stones, Monuments, and Features

Map #	Historic Name	Description	Material	Date	Type
	Cohasset Central Cemetery				SI
1	South Gate	gate	iron	ca. 1875	ST
2	Pratt Family Obelisk	marker	marble	1850s	O
3	Hattie V. Bates marker	marker	marble	ca. 1850	O
4	Retaining walls Garden Way	walls	granite	ca. 1873	ST
5	Sarah Pratt marker	marker	slate	1706	O
6	John Stetson marker	marker	slate	1741	O
7	Ezekial Stetson marker	marker	slate	1741	O
8	Lydia Stetson marker	marker	slate	1741	O
9	Cast iron fencing	fence	cast iron	ca. 1875	O
10	Cast iron fencing	fence	cast iron	ca. 1875	O
11	Margaret Tower marker	marker	slate	ca. 1710	O
12	Hobart Family graves	markers	slate	various	O
13	Joseph Osgood marker	marker	marble	1898	O
14	Celtic Cross	marker	granite	1914	O
15	Receiving tomb	structure	brick	1873	ST
16	Lawrence Barrett marker	marker	granite	1891	O
17	Stuart Robeson marker	marker	granite	1903	O
18	Jenkins Family monument	marker	marble	1876-1886	O
19	Tower monument	marker	metal	ca. 1875	O
20	Granite post and chain fence	fence	granite, metal	ca. 1850	ST
21	Eliza Chadbourne marker	marker	granite, marble	ca. 1877	O
22	Victorian era children markers	markers	marble	1862-1865	O
23	Aaron Pratt marker	marker	slate	1735/6	O
24	Job Nichols	marker	slate	1796	O
25	Cumner Columbarium	walls	granite, slate, concrete	1982	ST/NC
26	Tower Columbarium	walls	granite, slate, concrete	1988	ST/NC

UNITED STATES DEPARTMENT OF THE INTERIOR  
NATIONAL PARK SERVICE

NATIONAL REGISTER OF HISTORIC PLACES  
EVALUATION/RETURN SHEET

REQUESTED ACTION: NOMINATION

PROPERTY NAME: Cohasset Central Cemetery

MULTIPLE NAME:

STATE & COUNTY: MASSACHUSETTS, Norfolk

DATE RECEIVED: 11/14/02      DATE OF PENDING LIST: 11/22/02  
DATE OF 16TH DAY: 12/08/02      DATE OF 45TH DAY: 12/29/02  
DATE OF WEEKLY LIST:

REFERENCE NUMBER: 02001612

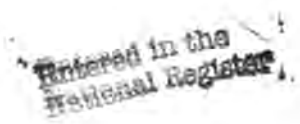
REASONS FOR REVIEW:

APPEAL: N    DATA PROBLEM: N    LANDSCAPE: N    LESS THAN 50 YEARS: N  
OTHER: N    PDIL: N    PERIOD: N    PROGRAM UNAPPROVED: N  
REQUEST: N    SAMPLE: N    SLR DRAFT: N    NATIONAL: N

COMMENT WAIVER: N

ACCEPT     RETURN     REJECT    12/27/02 DATE

ABSTRACT/SUMMARY COMMENTS:



RECOM./CRITERIA \_\_\_\_\_

REVIEWER \_\_\_\_\_ DISCIPLINE \_\_\_\_\_

TELEPHONE \_\_\_\_\_ DATE \_\_\_\_\_

DOCUMENTATION see attached comments Y/N see attached SLR Y/N



HERE LIES THE  
BODY OF SARAH  
PRATT WIFE  
TO ARON PRATT  
AGED 42 YEARS  
DIED JULY 7  
29th 1706

Cohasset Central Cemetery  
Joy Place  
Cohasset, MA. 02025

Synne Layman - Nov/Dec 2000  
P.O. Box 176  
No. Scituate, MA. 02060

Photo # 1 of 16  
Gravestone. Sarah Pratt d. 1786  
Slate. Death's head carving



HERE LIES BUR  
IED <sup>S</sup> V BODY  
OF M<sup>R</sup> AARON  
PRATT WHO  
DIED FEBRUARY  
<sup>th</sup> 23. 1735. IN  
<sup>y</sup> 81. YEAR  
OF HIS AGE

Cohasset Central Cemetery  
Joy Place  
Cohasset, MA. 02025

Lynne Layman Nov/Dec 2000  
P.O. Box 176  
No. Scituate, MA. 02060

Photo # 2 of 16  
Gravestone - Aaron Pratt d. 1735/6  
Slate. Sleepful Countenance Carving



HERE LIVES

BODY OF EZEK

IEL STETSON

SON OF M

JAMES & M

MARGRETT STET

SON WHO DYED

FEBRUARY

Cohasset Central Cemetery  
Joy Place  
Cohasset, MA. 02025

Lynne Layman Nov/Dec 2000  
P.O. Box 176  
No. Scituate, MA. 02060

Photo #3 of 16  
Gravestone - Ezekiel Stetson d. 1732  
Slate. Heartmouth carving




HERE LYES INTERR'D  
Y<sup>e</sup> BODY OF JOHN  
JACOB HOBART SON  
OF Y<sup>e</sup> REU<sup>d</sup> NEHE-  
MIAH HOBART WHO  
DEPARTED THIS LIFE  
DECEMBER Y<sup>e</sup> 20 ANN<sup>o</sup>  
DOM. 1735 ANTI-  
QUETAS SUIT

Cohasset Central Cemetery  
Joy Place  
Cohasset, MA. 02025

Lynne Layman Nov/Dec 2000  
P. O. Box 176  
No. Scituate, MA. 02060

Photo # 4 of 16  
Gravestone - John Jacob Hobart d. 1735  
Slate. Child's decorative headress carving



Here lyeth y Body  
of y Rev d m<sup>r</sup>  
Nehemiah Howari  
first pastor of y  
Church of Christ  
in this place died  
May. 31. an 1740  
in y. 44<sup>th</sup> year of  
his Age & 19<sup>th</sup> of  
his pastorate

Cohasset Central Cemetery  
Joy Place  
Cohasset, MA. 02025

Lynne Layman Nov/Dec 2000  
P.O. Box 176  
No. Scituate, MA. 02060

Photo #5 of 16  
Gravestone - Rev. Nehemiah Hobart d. 1740  
Slate. Catherine wheel, sand dollar carving

HERE LIVES  
BODY OF MRS  
MARGRET TOWER  
WIFE TO M  
J BROOK TOWER WHO  
DIED NOVEMBER  
1705 IN  
59 YEAR  
OF HER AGE



Cohasset Central Cemetery  
Joy Place  
Cohasset, MA. 02025

Lynne Layman Nov/Dec 2000  
P.O. Box 176  
No. Scituate, MA. 02060

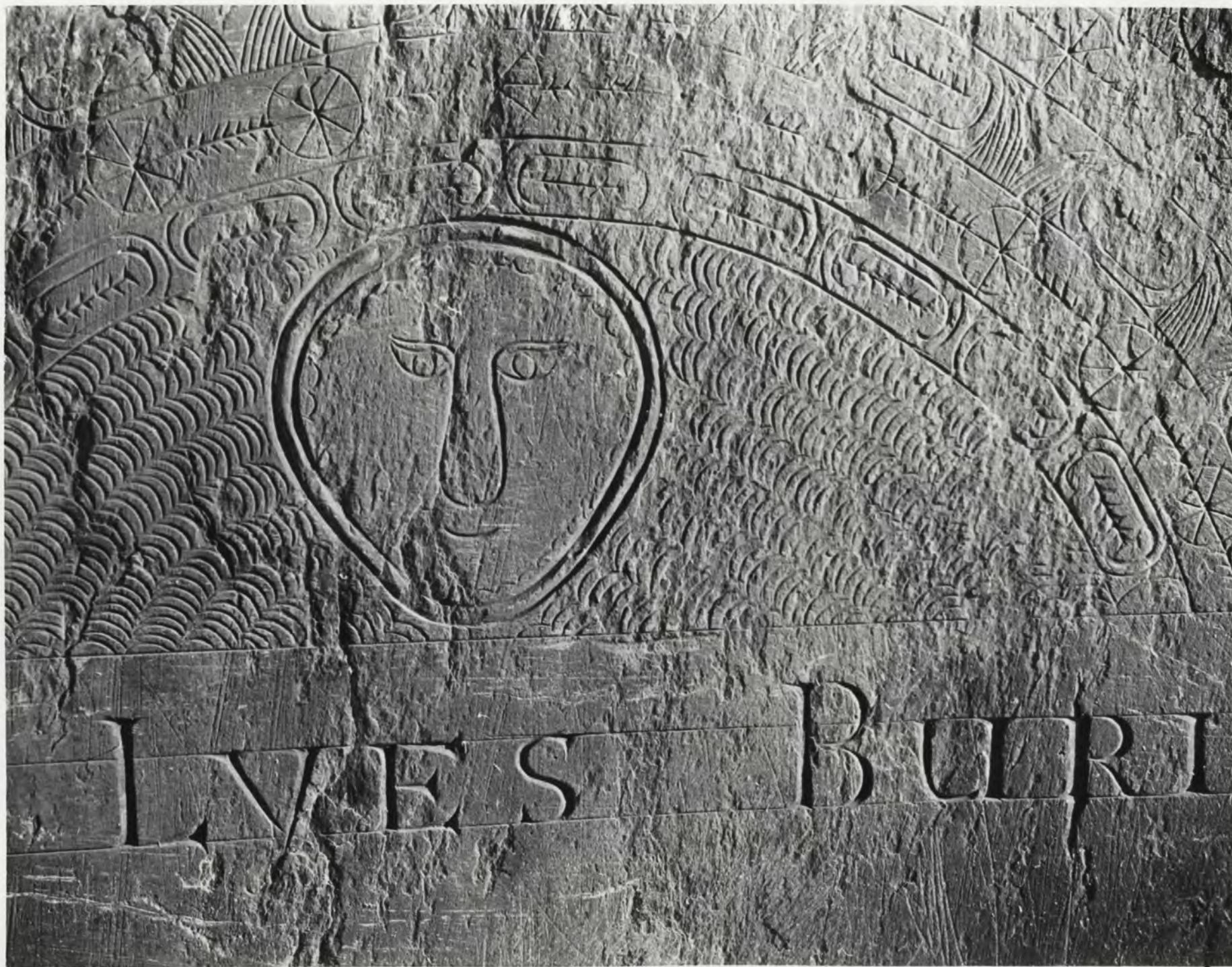
Photo # 6 of 16  
Gravestone - Margaret Tower d. 1705  
Slate. Presumed oldest stone in Cemetery

HERE LIES  
BODY OF  
J BROOK COVER WHO  
DIED NOVEMBER  
1739 IN  
188

Cohasset Central Cemetery  
Joy Place  
Cohasset, MA. 02025

Lynne Layman Nov/Dec 2000  
P.O. Box 176  
No. Scituate, MA. 02060

Photo # 7 of 16  
Gravestone of Brook Tower d. 1732  
Slate. Same design as Margaret Tower (see #6)



Cohasset Central Cemetery  
Joy Place  
Cohasset, MA. 02025

Lynne Layman Nov/Dec 2000  
P.O. Box 176  
No. Scituate, MA 02060

Photo # 8 of 16  
Gravestone - Daniel Tower d. 1774  
Slate. Human face/saint carving



Here lies Interr'd the  
Remains, of M<sup>r</sup>.  
THOMAS STEVENSON Merch<sup>t</sup>  
who Departed this Life  
the 70<sup>th</sup>.

Cohasset Central Cemetery  
Gay Place  
Cohasset, MA. 02025

Lynne Layman Nov/Dec 2000  
P.O. Box 176  
No. Scituate, MA. 02060

Photo # 9 of 16  
Gravestone - Thomas Stevenson d. 1775  
Slate. Cherubim carving



In memory of  
**MRS. SARAH,**  
wife of  
Genl. Neal  
died  
1841

Cohasset Central Cemetery  
Joy Place  
Cohasset, MA. 02025

Lynne Layman Nov/Dec 2000  
P.O. Box 176  
No. Acituate, MA. 02060

Photo #10 of 16  
Gravestone - Sarah Neal d. 1841  
Slate. Wren and willow carving



Cohasset Central Cemetery  
Joy Place  
Cohasset, MA. 02025

Synre Layman Nov/Dec 2000  
P.O. Box 176  
No. Scituate, MA 02060

Photo # 11 of 16  
Gravestones - Lulu d. 1865, Jennie d. 1867, Linda d. 1862  
Marble. Three lamb carvings



Cohasset Central Cemetery  
Joy Place  
Cohasset, MA. 02025

Lynne Layman Nov/Dec 2000  
P.O. Box 176  
No. Scituate, MA. 02060

Photo # 12 of 16  
Gravestones - Cousins family erected ca. 1870/80  
Marble. Arched stones.



SAMUEL L. JENKINS  
Died September 2, 1856  
Aged 74 years.

JENKINS

Cohasset Central Cemetery  
Joy Place  
Cohasset, MA. 02025

Lynne Layman Nov/Dec 2000  
P.O. Box 176  
No. Scituate, MA. 02060

Photo # 13 of 16  
Gravestone - Samuel L. Jenkins d. 1886  
marble. Female statue with anchor



Cohasset Central Cemetery  
Joy Place  
Cohasset, MA. 02025

Lynne Layman Nov/Dec 2000  
P.O. Box 176  
No. Scituate, MA. 02060

Photo #14 of 16  
Gravestones - Lothrop family mid 1800s  
Marble obelisk and urn. Cast iron fence



THIS CROSS WAS ERECTED AND DEDICATED  
MAY 30, 1914 BY THE A.O.H. AND L. A. A. O. H.  
OF MASSACHUSETTS TO MARK THE FINAL  
RESTING PLACE OF ABOUT FORTY FIVE  
IRISH EMIGRANTS FROM A TOTAL COMPANY  
OF NINETY NINE WHO LOST THEIR LIVES  
ON GRAMPUS LEDGE OFF COHASSET,  
OCTOBER 7, 1843 IN THE WRECK OF THE  
BRIG ST. JOHN FROM GALWAY IRELAND

R. I. P.

A. O. H.

Cohasset Central Cemetery  
Gay Place  
Cohasset, MA. 02025

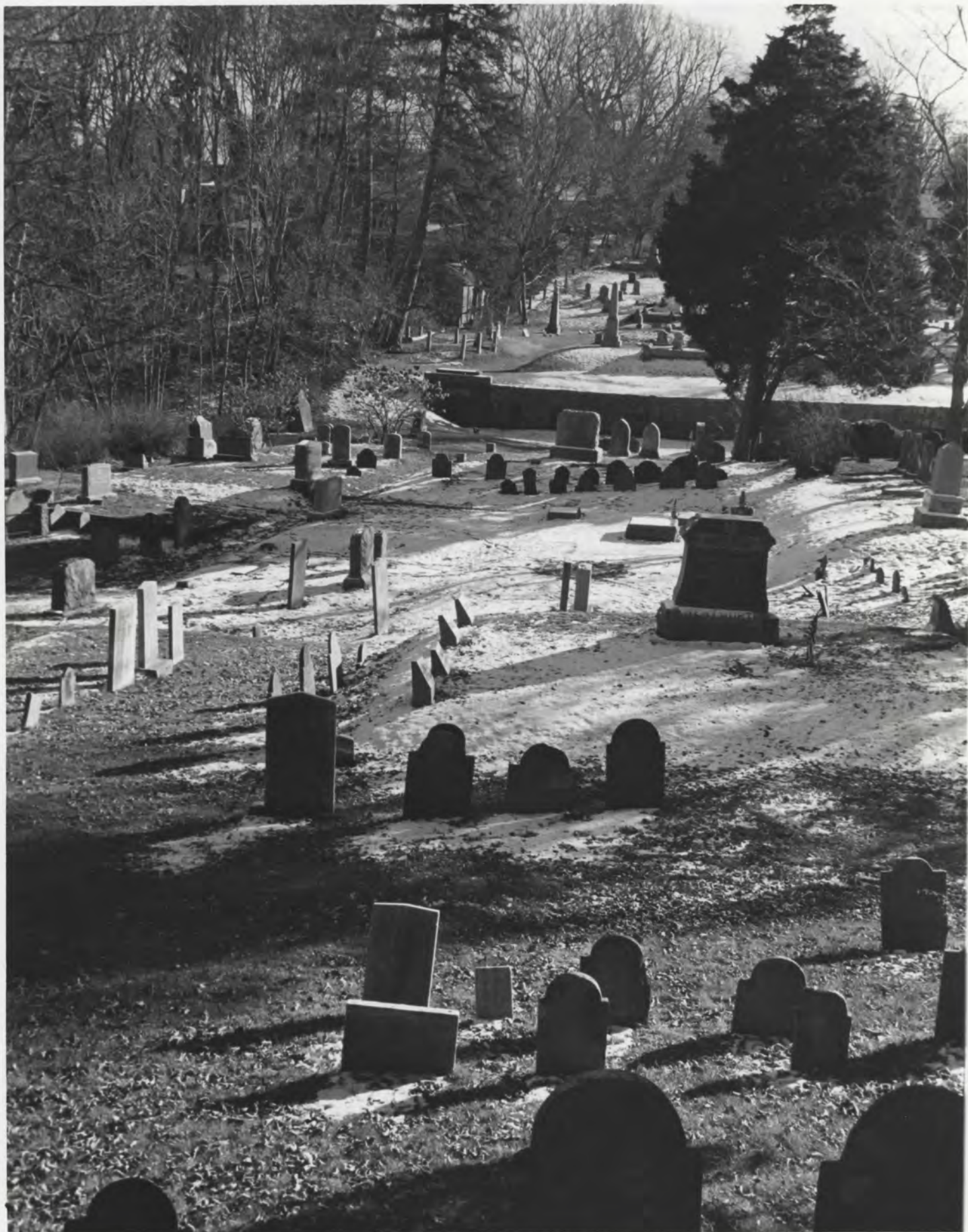
Dynou Layman Nov/Dec 2000  
P.O. Box 176  
No. Scituate, MA. 02060

Photo # 15 of 16  
Celtic Cross erected 1914  
Granite

22  
16  

---

22



Cohasset Central Cemetery  
Joy Place  
Cohasset, MA. 02025

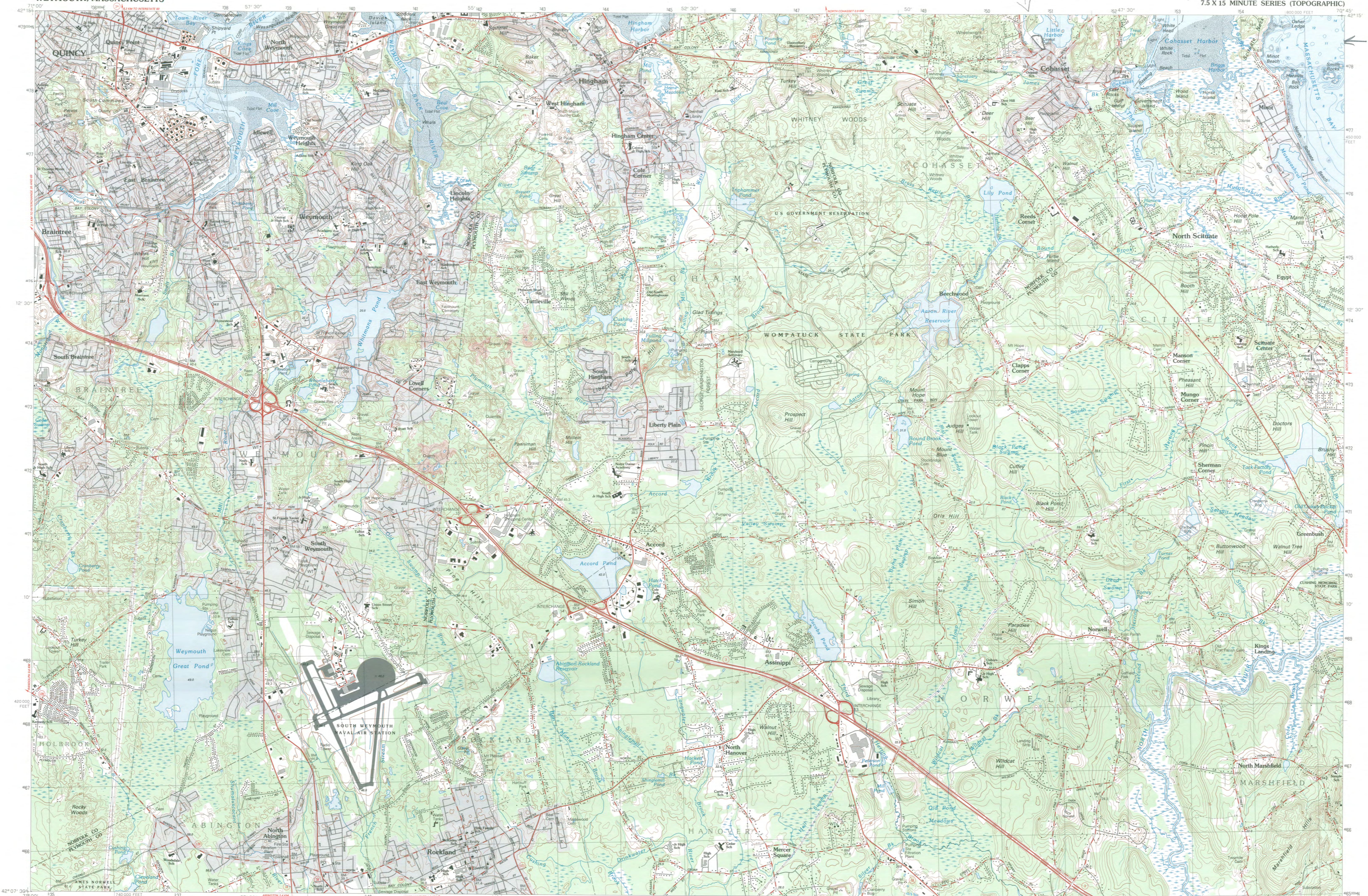
Lynne Layman Nov/Dec 2000  
P.O. Box 176  
No. Scituate, MA 02060

Photo # 16 of 16  
overview of Cohasset Central Cemetery

WEYMOUTH, MASSACHUSETTS

7.5 X 15 MINUTE SERIES (TOPOGRAPHIC)

Cohasset, MA  
Cohasset Central Cemetery



**Weymouth**  
MASSACHUSETTS  
*Cohasset Central Cemetery*  
COHASSET (MOLDFUL), MA  
1:25 000-scale metric  
topographic map

7.5 X 15 MINUTE QUADRANGLE  
SHOWING

- Contours and elevations in meters
- Highways, roads and other manmade structures
- Water features
- Woodland areas
- Geographic names

GEOLOGICAL SURVEY  
1984

Produced by the United States Geological Survey in cooperation with Massachusetts Department of Public Works  
Control by USGS, NOS/NOA, and Commonwealth of Massachusetts agencies  
Compiled by photogrammetric methods from aerial photographs taken 1978. Field checked 1979. Map edited 1984  
Supersedes Weymouth and Cohasset 1:25 000-scale maps dated 1971 and 1974  
Selected hydrographic data compiled from NOS charts 13269 (1980) and 13270 (1982). This information is not intended for navigational purposes  
Projection and 1000-meter grid, zone 18; Universal Transverse Mercator  
10,000-foot grid ticks based on Massachusetts coordinate system, mainland zone  
1927 North American Datum  
To place on the predicted North American Datum 1983 move the projection lines 2 meters south and 42 meters west as shown by dashed corner ticks  
There may be private inholdings within the boundaries of the National or State reservations shown on this map

CONTOUR INTERVAL 3 METERS  
NATIONAL GEODETIC VERTICAL DATUM OF 1929  
CONTOUR ELEVATIONS SHOWN TO THE NEAREST 0.1 METER  
OTHER ELEVATIONS SHOWN TO THE NEAREST 0.1 METER  
DEPTH CURVES AND SOUNDINGS IN METERS  
DATUM IS MEAN LOW WATER  
THE RELATIONSHIP BETWEEN THE TWO DATUMS IS VARIABLE  
SHORELINE SHOWN REPRESENTS THE APPROXIMATE LINE OF MEAN HIGH WATER  
THE MEAN RANGE OF TIDE IS APPROXIMATELY 2.7 METERS

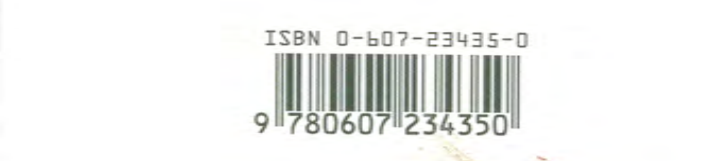
THIS MAP COMPLIES WITH NATIONAL MAP ACCURACY STANDARDS

Meters	Feet
1	3.2808
2	6.5617
3	9.8425
4	13.1234
5	16.4042
6	19.6850
7	22.9659
8	26.2467
9	29.5275
10	32.8084

To convert meters to feet multiply by 3.2808  
To convert feet to meters multiply by 0.3048

UTM grid convergence (G) at center of map is approximately 0.1 meter  
Diagram is approximate

ADJOINING MAPS	1	2	3
1	Boston South		
2	Hull		
3	Norwood		
4	Scituate		
5	Brockton		
6	Weymouth		
7	Whitman		
8	Duxbury		



**Topographic Map Symbols**

Primary highway, hard surface	— — — — —
Secondary highway, hard surface	— — — — —
Light-duty road, hard or improved surface	— — — — —
Unimproved road, trail	— — — — —
Roads marker: interstate, U. S. State	— — — — —
Railroad: standard gage, narrow gage	— — — — —
Bridge, drawbridge	— — — — —
Footbridge, overpass, underpass	— — — — —
Rail-up: one-way selected railroad building shown	— — — — —
House; barn; church; school; large structure	— — — — —
Boundary:	
National, with monument	— — — — —
State	— — — — —
County, parish	— — — — —
Civil township, precinct, district	— — — — —
Incorporated city, village, town	— — — — —
National or State reservation, small park	— — — — —
Land grant with monument; found section corner	— — — — —
U. S. public lands survey: range, township; section	— — — — —
Range, township; section line; location approximate	— — — — —
Fence or field line	— — — — —
Power transmission line, located tower	— — — — —
Dam; dam with lock	— — — — —
Cemetery, grave	— — — — —
Campground; picnic area; U. S. location monument	— — — — —
Windmill; water well; spring	— — — — —
Mine shaft; prospect; adit or cave	— — — — —
Control: horizontal station; vertical station; spot elevation	— — — — —
Contours: index; intermediate; supplementary; depression	— — — — —
Distorted surface: strip mine, levee, sand	— — — — —
Bathymetric contours: index; intermediate	— — — — —
Perennial lake and stream; intermittent lake and stream	— — — — —
Rapids, large and small; falls, large and small	— — — — —
Submerged marsh; marsh; meadow	— — — — —
Land subject to controlled inundation; woodland	— — — — —
Scrub; mangrove	— — — — —
Orchard; vineyard	— — — — —

A pamphlet describing topographic maps is available on request

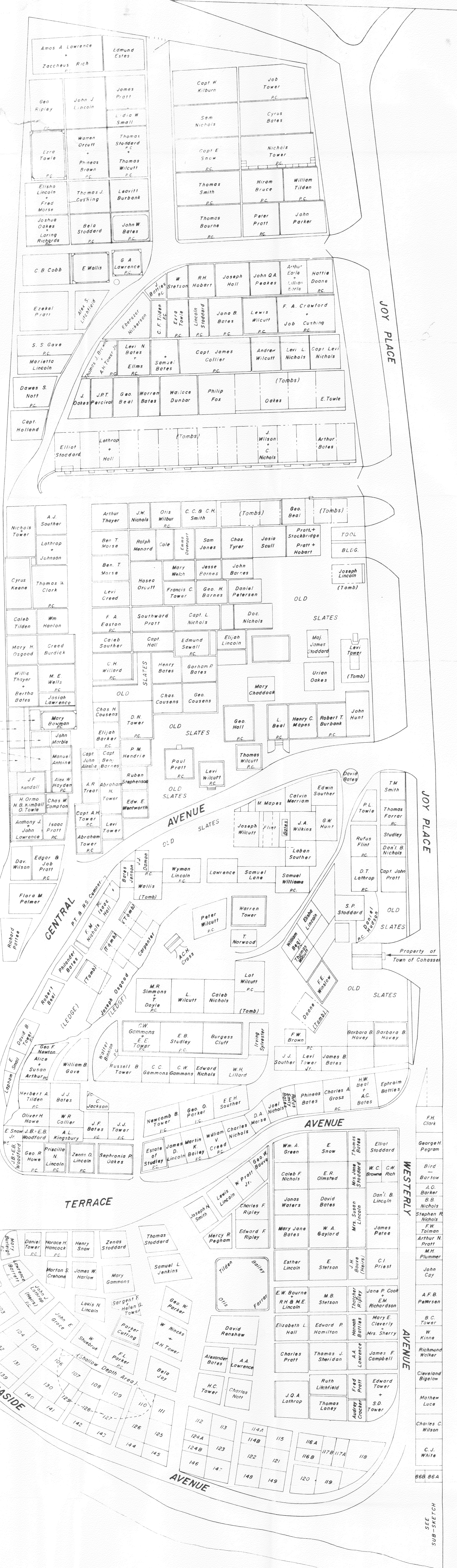
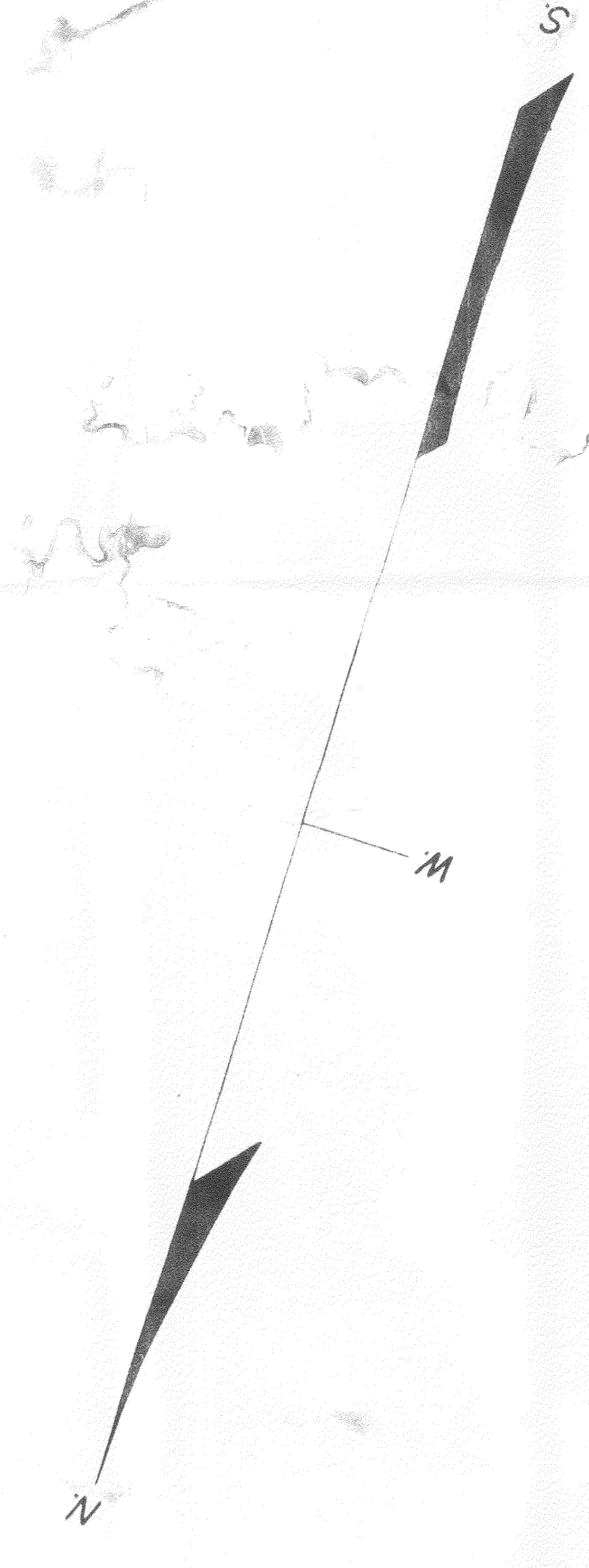


Scale 1 inch = 80 feet  
 Hartley L. White, Civil Engineer.

Plot 42



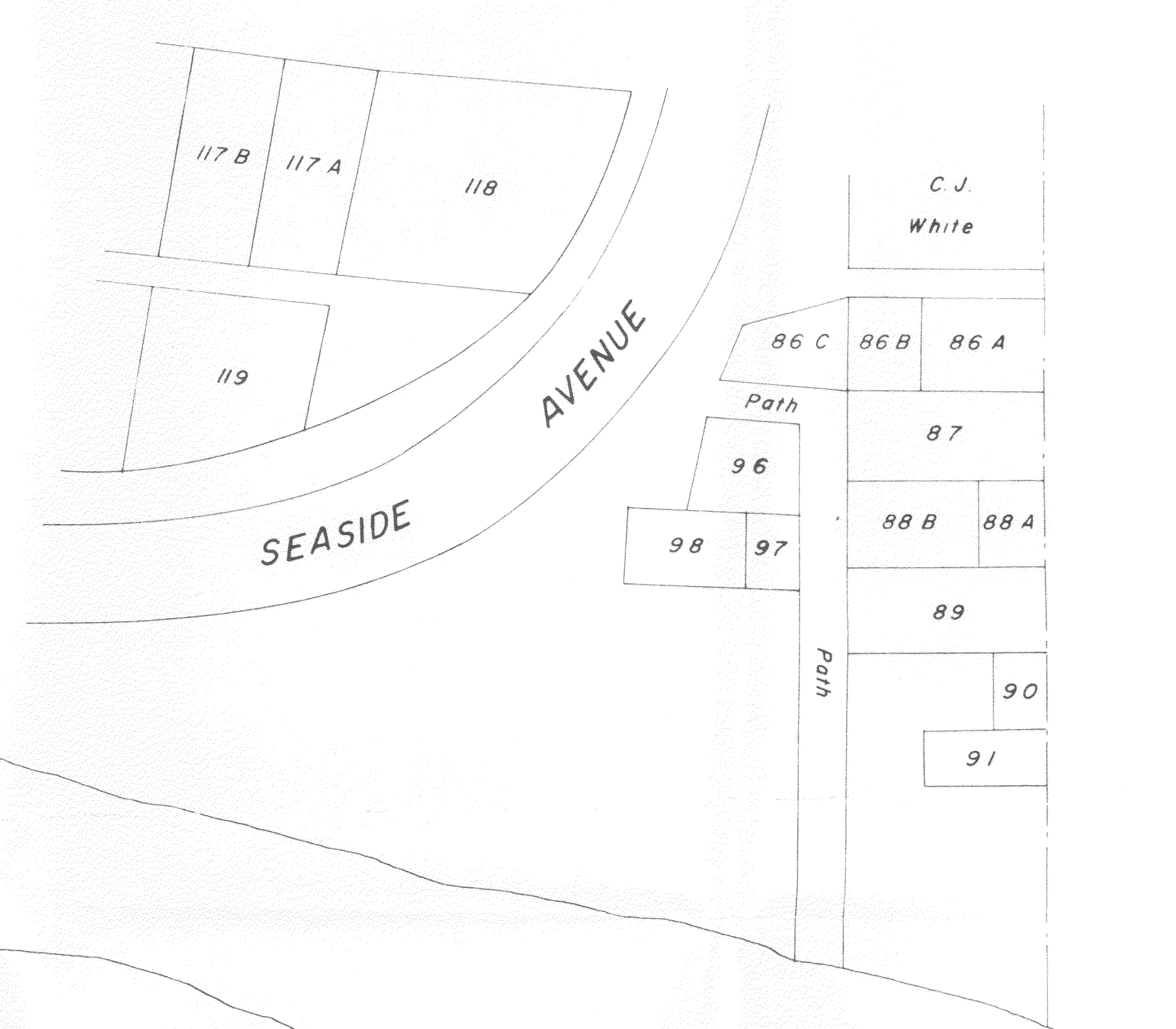
COMPILED PLAN OF THE  
 COHASSET CENTRAL CEMETERY  
 FROM  
 NORTH MAIN ST. TO SEASIDE AVE.  
 COHASSET, MASS.  
 Scale 1"=20' Mar. 9, 1961  
 Lewis W. Perkins & Son, Eng'rs, Hingham Mass.



SEASIDE AVENUE SECTION			
Lot	Name	Lot	Name
101	S. Trayer	126	
102	Willard J. Tuckerman	127	
103	Albert H. & Edna H. Seaver	128	
104	Francis E. Jenks	129	
105	Charles E. & Barbara H. Thayer	130	Carlton M. & Marion H. Woods
106	George W. & Helen F. W. Smith	131	Robert C. & Virginia W. Knowles
107		132	William C. & Jessie B. Cox
108	E. A. Watson	133	Edward & Jane Steel
109		134A	Carl B. Ferguson
110		134B	Edgar H. Flummer
111	John & Elizabeth Doun	135	Kenneth Leslie
112	Alex & Rebecca E. Hillis		
113	Spurgeon H. & Mary E. Cunningham	138	
114A	Clarence M. & Elizabeth T. Flint	139	
114B	Elmer H. & Ruth A. Pratt		
115	Kenneth D. & Helen L. Ketchum	140	
116A	Emery W. Littlep	141	
116B	Rene & Jane Unwood		
117A	Richard Hazelden Rice	142	
117B	Mildred & Claire (Burbidge) Rice		
118	Glady's May (James) Rice	143	
119		144	
120		145	
121		146	
122		147	
123		148	
124A	Anthony & Katharine Whittemore	149	
124B			
125			

SMALL LOT SECTION			
Lot	Name	Lot	Name
86A	Thomas M. & Ruth D. James	91	Lindsay D. Allen
86B	Harry O. & Caroline B. Williams	92	
86C	Zula Knapp	93	
87	H.K. & Florence A. Bartin	94	
88A	Bernard O. Krippan	95	
88B	Langford & Huls "Warren"	96	Minie A. & Eunice I. Browne
89	William C. Madden	97	Arthur C. & Alice S. Wisola
90	John F. & Helen B. Hubbard	98	David B. & Jean Chalmers Tower

SUB-SKETCH OF SMALL LOTS  
 Scale 1"=10'



Oscar & Viola Johnson  
 Edward F. & Lucia R. Woods  
 Thomas Stevenson  
 Daniel C. & Jean R. Coffin  
 Richard H. Wallace

WESTERLY AVENUE  
 SEASIDE AVENUE  
 JOY PLACE  
 TERRACE  
 CENTRAL AVENUE  
 NORTH MAIN STREET







**The Commonwealth of Massachusetts**  
William Francis Galvin, Secretary of the Commonwealth  
Massachusetts Historical Commission

November 5, 2002

Ms. Carol Shull  
National Register of Historic Places  
Department of the Interior  
National Park Service  
Mail Stop 2280, Suite 400  
1849 C Street, NW  
Washington, DC 20240

Dear Ms. Shull:

Enclosed please find the following nomination form:

Cohasset Central Cemetery, N. Main Street, Cohasset (Norfolk), MA

The nomination has been voted eligible by the State Review Board and has been signed by the State Historic Preservation Officer. The owners of the property were notified of pending State Review Board consideration 30 to 45 days before the meeting and were afforded the opportunity to comment.

Sincerely,

Betsy Friedberg  
National Register Director  
Massachusetts Historical Commission

enclosure

cc: Ann Montague, Cohasset Central Cemetery  
Elinor Campbell, Cohasset Central Cemetery  
Gretchen Schuler  
David Wadsworth, Cohasset Historical Society  
Thomas Callahan, Board of Selectmen  
Noel Ripley, Cohasset Historical Commission  
Alfred Moore, Jr., Planning Director

220 Morrissey Boulevard, Boston, Massachusetts 02125  
(617) 727-8470 • Fax: (617) 727-5128  
[www.state.ma.us/sec/mhc](http://www.state.ma.us/sec/mhc)