



Princess Anne Historic District
Somerset County, Maryland
George J. Andrevé, October, 1979
Neg. at Maryland Historical Trust
Metropolitan United Methodist Church
33 E. Broad Street

1 of ~~48~~

OCT 1 4 1980

AUG 4 1980



Princess Anne Historic District
Somerset County, Maryland
George J. Andreve, October, 1979
Neg. at Maryland Historical Trust
210 Somerset Avenue, west side of
Somerset Avenue, North of William St.

2 of 4~~8~~

AUG 4 1980

OCT 14 1980



Princess Anne Historic District
Somerset County, Maryland
George J. Andreve, October, 1979
Neg. at Maryland Historical Trust
North side of Prince William St.
looking toward the commercial area
from Beckford Street.

3 of 48

OCT 14 1980

AUG 4 1980



Princess Anne Historic District ^{OCT 1} 4 1980
Somerset County, Maryland ^{AUG 4} 1980
George J. Andreve, October, 1979
Neg. at Maryland Historical Trust
from left to right: 226, 206, 218, 216
Somerset Ave. (house numbers are not
consistent in Princess Anne. W/S of
Somerset Ave., N. of William St. 4 of 48)



Princess Anne Historic District
Somerset County, Maryland
George J. Andreve, October, 1979
Neg. at Maryland Historical Trust
West side of Beckford Street,
South of Linden Avenue

5 of 48

AUG 4 1980

OCT 14 1980



Princess Anne Historic District
Somerset County, Maryland
George J. Andreve, October, 1979
Neg. at Maryland Historical Trust
east side of Somerset Avenue,
North of William Street

6 of 48

AUG 4 1980

OCT 14 1980



Princess Anne Historic District
Somerset County, Maryland
George J. Andreve, October, 1979
Neg. at Maryland Historical Trust
North side of Prince William Street,
from Beckford to Mansion Avenue

7 of 48

OCT 14 1980

AUG 4 1980



Princess Anne Historic District

Somerset County, Maryland

George J. Andreve, October, 1979

Neg. at Maryland Historical Trust

From left to right 521-529 Beckford St

east side of Beckford Street, north of

South Street

AUG 4 1980

8 of 48

OCT 14 1980



Princess Anne Historic District
Somerset County, Maryland
George J. Andreve, October, 1979
Neg. at Maryland Historical Trust
from left to right: 304, 308 Beckford
Avenue, west side of Beckford Ave.
outh of William Street

9 of 48

OCT 14 1980

AUG 4

1980



Princess Anne Historic District
Somerset County, Maryland
George J. Andreve, October, 1979
Neg. at Maryland Historical Trust
East side of Somerset Avenue across
from Manokin Presbyterian Church
(shown on right)

10 of 48

AUG 4 1980

OCT 14 1980



Princess Anne Historic District
Somerset County, Maryland
George J. Andreve, October 1979
Neg. at Maryland Historical Trust
East side of North Beckford Avenue
north of William Street

11 of 48

OCT 14 1980

AUG 4 1980



Princess Anne Historic District
Somerset County, Maryland
George J. Andreve, October, 1979
Neg. at Maryland Historical Trust
House of left is: 228 N. Beckford Ave.
(NW corner of N. Beckford Ave & Wm. St)
remainder of Photo shows: W/S N. Beck-
ford, n. of William St, 12 of 49

OCT 1 1980
AUG 4 1980



Princess Anne Historic District
Somerset County, Maryland
George J. Andreve, October 1979.
Neg. at Maryland Historical Trust
South side of Linden Avenue, east of
S. Beckford Avenue

13 of 48

OCT 14 1980

AUG 4 1980



Princess Anne Historic District

Somerset County, Maryland

George J. Andreve, October, 1979

Neg. at Maryland Historical Trust

East side N. Beckford Street, south of

Washington Street. Nos. 259-267

14 of 48

OCT 14 1980

AUG 4 1980



Princess Anne Historic District
Somerset County, Maryland AUG 4 1980
George J. Andreve, October, 1979
Neg. at Maryland Historical Trust
Hayman House, 116 Prince William St.
(SW corner of Prince William & Church
Streets) St. Andrew's Episcopal Church
(behind) 15 of 43 OCT 14 1980



Princess Anne Historic District
Somerset County, Maryland
George J. Andreve, October 1979
Neg. at Maryland Historical Trust
Linden Hall, east side of Somerset
Ave. approximately opposite the
Washington High School

AUG 4 1980

16 of 48

OCT 14 1980



Princess ANNE Historic District
Somerset County, Maryland
George: J. Andreve, October, 1979
Neg. at Maryland Historical Trust
32 Washington Street
NW. Corner of Washington and N.
Beechwood Streets

AUG 4 1980

OCT 14 1980

17 of 48



Princess Anne Historic District
Somerset County, Maryland
George J. Andreve, October 1979
Neg. at Maryland Historical Trust
from left to right 217, 229, 233
Prince William Street (south side of
Prince William St. between Mansion and
N. Beckford Streets)

18 of 48

OCT 14 1980 AUG 4 1980



Princess ANne Historic District
Somerset County, Maryland
George J. Andreve, October 1979
Neg. at Maryland Historical Trust
East side of Somerset Ave. looking
from the Manokin River toward Broad St.

19 of 48

OCT 14 1980 AUG 4 1980



Princess Anne Historic District
Somerset County, Maryland
George J. Andreve, October, 1979
Neg. at Maryland Historical Trust
St. Andrew's Episcopal Church east
side of N. Beckford Avenue, north of
Washington Street AUG 4 1980

20 of 48 OCT 14 1980



Princess ANne Historic District
Somerset County, Maryland
George J. Andreve, October, 1979
Neg. at Maryland Historical Trust
131 Broad Street, Southeast corner of
Broad St. and N. Beckford Avenue

21 of 48

AUG 4 1980

OCT 14 1980



Princess Anne Historic District
Somerset County, Maryland
George J. Andreve, October, 1979
Neg. at Maryland Historical Trust
Teackle Mansion
West side of Mansion Street at Prince
William Street AUG 4 1980 OCT 14 1980
22 of 48



Princess Anne Historic District
Somerset County, Maryland
George J. Andreve, October, 1979
Neg. at Maryland Historical Trust
Commercial Area, east side of Somerset
Ave. at Prince William Street

23 of 49

OCT 14 1980 AUG 4 1980



Princess Anne Historic District
Somerset County, Maryland
George J. Andreve, October, 1979
Neg. at Maryland Historical Trust
Tunstall Cottage
Southwest corner of Broad and Church St.

24 of 48

AUG 4 1980

OCT 14 1980



Princess Anne Historic District
Somerset County, Maryland
George J. Andreve, October, 1979
Neg. at Maryland Historical Trust
St. Andrew's E.P. Church. w/s of Church
St. between Washington and Prince
William Streets

AUG 4 1980

25 of ~~47~~ 48

OCT 14 1980



Princess Anne Historic District
Somerset County, Maryland
George J. Andreve, October, 1979
Neg. at Maryland Historical Trust
McGruder House, NE corner of Prince
William St. and Mansion St.

26 of 4g

AUG 4 1980

OCT 14 1980



Princess Anne Historic District
Somerset County, Maryland
George J. Andreve, October, 1979
Neg. at Maryland Historical Trust
Anne Scott Real Estate Office
Northwest corner of Somerset Ave. and
Broad Street.

27 of ~~47~~ 48

AUG 4 1980

OCT 14 1980



Something went wrong while we were encoding this page.
Please check the log file to find out the details.

Princess Anne Historic District
Somerset County, Maryland
George J. Andreve, October, 1979
Neg. at Maryland Historical Trust
McGruder House, east side of N. Beck-
ford Ave, at its intersection with
Manokin Avenue

28 of 48

OCT 14 1980 AUG 4 1980



Princess Anne Historic District
Somerset County, Maryland
George J. Andreve, October, 1979
Neg. at Maryland Historical Trust
south side of Prince William Street
looking east from Church Street

29 of 48

AUG 4 1980

OCT 14 1980



Peninsula
Bank

UTILITY BOX

MAILBOX

MAILBOX

PARKING METER

Princess Anne Historic District
Somerset County, Maryland
Geroge J. Andreve, October, 1979
Neg. at Maryland Historical Trust
west side of Somerset Ave. between
PrinceWilliam St. and Washington St.

30 of 4g

OCT 14 1980

AUG 4 1980



Princess Anne Historic District
Somerset County, Maryland
George J. Andreve, October 1979
Neg. at Maryland Historical Trust
Railroad Station, east side of
Beechwood St. and William Street

31 of 48

OCT 14 1980

AUG 4 1980



Princess Anne Historic District
Somerset County, Maryland
Neg. at Maryland Historical Trust
Commercial Area, southeast corner of
Somerset Avenue, at Prince William
Street (George J. Andreve, Oct., 1979)

32 of 48

OCT 14 1980

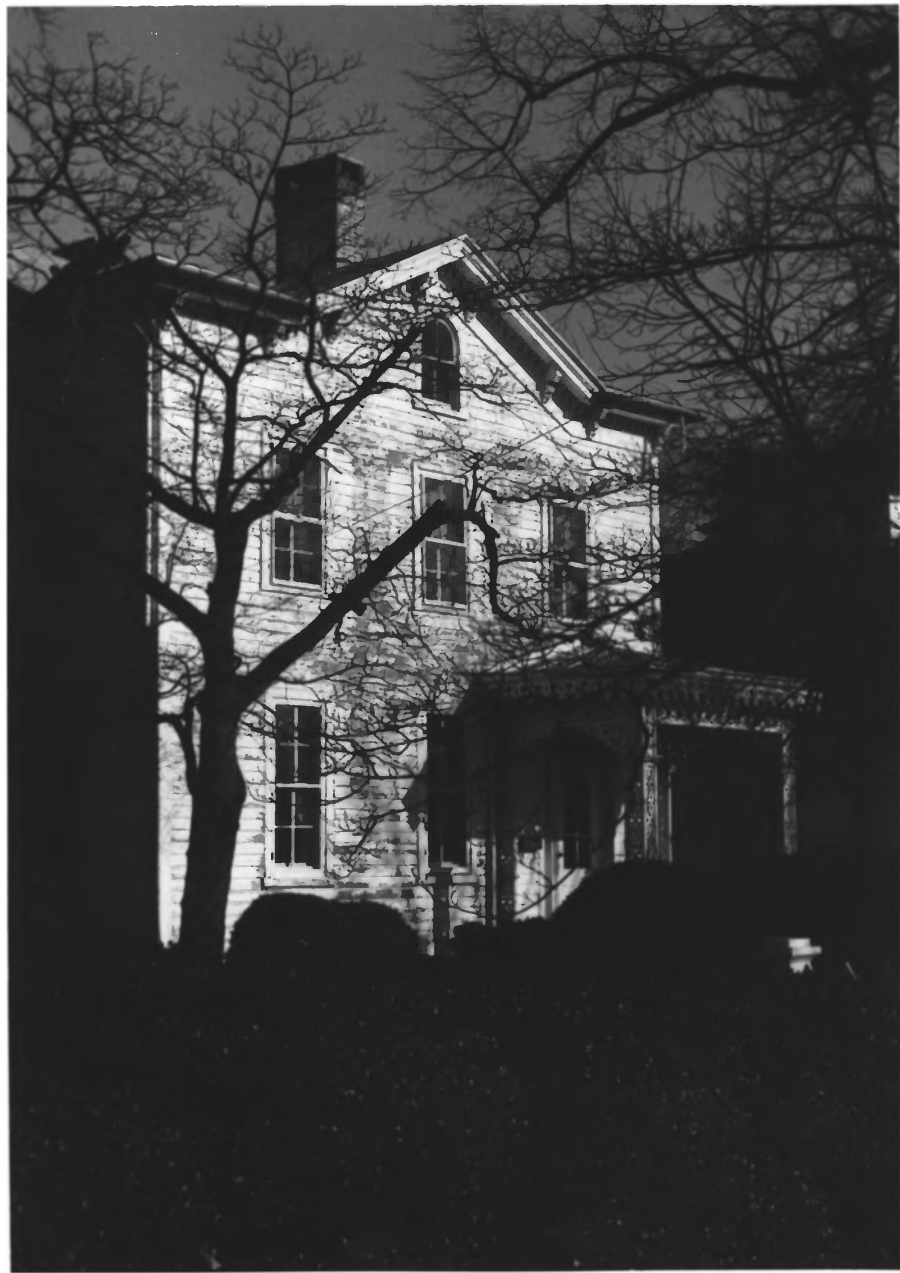
AUG 4 1980



Princess Anne Historic District
Somerset County, Maryland
George J. Andreve, October 1979
Neg. at Maryland Historical Trust
Commercial Area, east side of
Somerset Ave. between Prince William
and Broad Streets.

33 of 48

OCT 4 1980 AUG 4 1980



Princess Anne Historic District
Somerset County, Maryland
George J. Andreve, October, 1979
Neg. at Maryland Historical Trust
Presbyterian Manse, 113 Somerset Ave.
between Washington St. and Antioch
Ave.

34 of 48

OCT 14 1980

AUG 4 1980



WALTERS' STORE
Liquor & Groceries
113

WALTERS' STORE
Liquor & Groceries
113

Princess Anne Historic District
Somerset County, Maryland
George J. Andreve, October, 1979
Neg. at Maryland Historical Trust
Old Bank of Somerset 311-313 Somerset
Ave. (east side of Somerset Ave.
between Washington and Prince William
Streets) 35 of 48

AUG 4
1980
OCT 14 1980



Princess Anne Historic District
Somerset County, Maryland
George J. Andreve, October, 1979
Neg. at Maryland Historical Trust
County Courthouse, north side of
Prince William St. looking west from
Somerset Avenue

36 of 48

OCT 14 1980 AUG 4 1980



SOMERSET COUNTY COMMISSIONERS

Princess Anne Historic District
Somerset County, Maryland
George J. Andreve, October, 1979
Neg. at Maryland Historical Trust
Somerset County Commissioners office
south side of Prince William St.
opposite the courthouse

AUG 4 1980

37 of 48

OCT 14 1980



Princess Anne Historic District
Somerset County, Maryland
George J. Andreve, October, 1979
Neg. at Maryland Historical Trust
Washington Hotel, west side of
Somerset Ave. between Prince William
and Broad Streets

38 of 48

OCT 14 1980 AUG 4 1980



Princess Anne Historic District
Somerset County, Maryland
George J. Andreve, October, 1979
Neg. at Maryland Historical Trust
Library, NW corner of Prince William
St. and N. Beechwood Street

39 of 43

AUG 4 1980

OCT 14 1980



Something went wrong while we were encoding this page.
Please check the log file to find out the details.

Princess Anne Historic District
Somerset County, Maryland
George J. Andreve, October, 1979
Neg. at Maryland Historical Trust
Election House, NW corner of N.
Beckford Ave. and Manokin Avenue

40 of 48

AUG 4 1980 OCT 14 1980



Princess Anne Historic District
Somerset County, Maryland
George J. Andreve, October, 1979
Neg. at Maryland Historical Trust
West side of Somerset Avenue
north of South Street

41 of 40

OCT 14 1980

AUG 4 1980



Princess ANne Historic District
Somerset County, Maryland
George J. Andreve, October, 1979
Neg. at Maryland Historical Trust
north side of Broad Street from Church
St. looking toward Somerset Ave.

42 of 4~~3~~

AUG 4 1980

OCT 14 1980



Princess Anne Historic District
Somerset County, Maryland
George J. Andreve, October, 1979
Neg. at Maryland Historical Trust
Colgan House, W/s of Somerset Ave. btw.
the Manokin River and Broad St. Next
to it is the Anne Scott Real Estate
Office on NW. corner of Somerset Ave.

and Broad Street.

43 of 48

OCT 14 1980

AUG 4 1980



Princess Anne Historic District
Somerset County, Maryland
George J. Andreve, October 1979
Neg. at Maryland Historical Trust
south side of Broad Street between
N. Beckford Avenue and Church Street.

44 of 49

AUG 4 1980

OCT 14 1980



Princess Anne Historic District
Somerset County, Maryland
George J. Andreve, October 1979
Neg. at Maryland Historical Trust
May House, facing Somerset Avenue,
Southwest corner of Somerset Avenue
and Washington Street

45 of 49

OCT 14 1980 AUG 4 1980



Princess Anne Historic District
Somerset County, Maryland AUG 4 1980
George J. Andreve, October 1979
Neg. at Maryland Historical Trust
South side of Prince William St. at
intersection of Mansion St. Teackle
Mansion (Mansion St.) to the right in
photograph. 46 of ~~4~~ 48 OCT 14 1980



Princess ANne Historic District
Somerset County, Maryland AUG 4 1980
George J. Andreve, October 1979
Neg. at Maryland Historical Trust
County Courthouse on Prince William
St. looking east toward the
intersection with Somerset Avenue.

47 of ~~47~~ 48

OCT 14 1980



Princess Anne Historic District
Somerset County, Maryland
George J. ANDreve, October 1979
Neg. at Maryland Historical Trust
N. Beechwood St. looking north
from Prince William St.

48 of 48

OCT 14 1980

AUG 4 1980