

United States Department of the Interior
National Park Service

RECEIVED

MAR 15 1993

National Register of Historic Places
Registration Form

NATIONAL
REGISTER

This form is for use in nominating or requesting determinations for individual properties and districts. See instructions in *How to Complete the National Register of Historic Places Registration Form* (National Register Bulletin 16A). Complete each item by marking "x" in the appropriate box or by entering the information requested. If an item does not apply to the property being documented, enter "N/A" for "not applicable." For functions, architectural classification, materials, and areas of significance, enter only categories and subcategories from the instructions. Place additional entries and narrative items on continuation sheets (NPS Form 10-900a). Use a typewriter, word processor, or computer, to complete all items.

1. Name of Property

historic name Tom Thumb House

other names/site number _____

2. Location

street & number 351 Plymouth Street N/A not for publication

city or town Middleborough N/A vicinity

state Massachusetts code 025 county Plymouth code 023 zip code 02346

3. State/Federal Agency Certification

As the designated authority under the National Historic Preservation Act, as amended, I hereby certify that this nomination request for determination of eligibility meets the documentation standards for registering properties in the National Register of Historic Places and meets the procedural and professional requirements set forth in 36 CFR Part 60. In my opinion, the property meets does not meet the National Register criteria. I recommend that this property be considered significant nationally statewide locally. (See continuation sheet for additional comments.)

Judith B. McDonough 3/3/93
Signature of certifying official/Title Judith B. McDonough Date Executive Director
Massachusetts Historical Commission, State Historic Preservation Officer
State of Federal agency and bureau

In my opinion, the property meets does not meet the National Register criteria. (See continuation sheet for additional comments.)

Signature of certifying official/Title _____ Date _____
State or Federal agency and bureau _____

4. National Park Service Certification

I hereby certify that the property is:

- entered in the National Register. See continuation sheet.
- determined eligible for the National Register See continuation sheet.
- determined not eligible for the National Register.
- removed from the National Register.
- other, (explain): _____

Signature of the Keeper

Delores Byers

Entered in the
National Register

Date of Action

4/16/93

Tom Thumb House
Name of Property

Plymouth County, MA
County and State

5. Classification

Ownership of Property
(Check as many boxes as apply)

- private
- public-local
- public-State
- public-Federal

Category of Property
(Check only one box)

- building(s)
- district
- site
- structure
- object

Number of Resources within Property
(Do not include previously listed resources in the count.)

Contributing	Noncontributing	
1	2	buildings
		sites
	1	structures
		objects
1	3	Total

Name of related multiple property listing
(Enter "N/A" if property is not part of a multiple property listing.)

N/A

Number of contributing resources previously listed in the National Register

0

6. Function or Use

Historic Functions
(Enter categories from instructions)

DOMESTIC: single dwelling

Current Functions
(Enter categories from instructions)

DOMESTIC: single dwelling

7. Description

Architectural Classification
(Enter categories from instructions)

LATE VICTORIAN: Second Empire/Italianate

Materials
(Enter categories from instructions)

foundation BRICK
walls WOOD: weatherboard
roof STONE: slate
other

Narrative Description

(Describe the historic and current condition of the property on one or more continuation sheets.)

United States Department of the Interior
National Park Service

National Register of Historic Places Continuation Sheet

Tom Thumb House
Middleborough (Plymouth County)
Massachusetts

Section number 7 Page 1

7. DESCRIPTION

Located in the southeastern part of Massachusetts, in Plymouth County, the Tom Thumb House is a ca. 1871 Second Empire dwelling. The lot of the Tom Thumb House is 1.45 acres at the intersection of Plymouth and Summer Streets. There are two noncontributing outbuildings including a low one story concrete block building built in the early 1900s for an egg business, and a late 1980s lean-to for horses. Also on the property is a noncontributing patio which was recently added to the property. Situated in the northern part of the Town of Middleborough, the Tom Thumb House is in a section known as Warrentown just east of the Nemasket River. The property is bound on the north and east by Plymouth Street and by open farm land of adjoining properties on the south and west sides. A modest late nineteenth century farmhouse is on the adjacent property on the west side and a large barn with Dutch Colonial roof is near the property line on the south side.

Middleborough is an inland town in the southeast part of the State near Cape Cod. It is characterized by unusually large areas of water which have in part determined the settlement and development of Middleborough. The Town is separated from Bridgewater on the north by the Taunton River. There are no defining topographical features separating Middleborough from Carver, Plympton and Halifax to the east and Rochester to the south. On the west and southwest edge are two large ponds and swamp areas known as the Assawamsett and Great Quitticas. Middleborough has at least six centers each of which evolved as separate self sufficient villages surrounded by vast areas of swamp and agricultural fields including cranberry bogs and wooded swamp land. These natural resources played a major roll in the development of Middleborough.

The Tom Thumb House is representative of a well defined dwelling in the Second Empire Style with detailed embellishments strongly identifying its development with an important personage. Charles Sherwood Stratton (1838-1883), also known as General Tom Thumb of Phineas Barnum's Circus, built the house following his marriage to Lavina Bump of Middleborough. The period of significance spans the years from construction in ca. 1871 to 1910 when General Tom Thumb's widow, Lavina Warren Bump (1841-1919), and her second husband sold the property due to financial difficulty.

The property is part of what was known as the Warren Farm, purchased by Charles S. Stratton (General Tom Thumb) in 1864 from Nahum M. Tribou. It was after the couple's return from the world wide tour in 1871 that the elegant house was built on an 81 acre parcel. In subsequent years the property was subdivided and by 1978 a large part of the back acreage was sold separately from the house and surrounding property of

(continued)

United States Department of the Interior
National Park Service

National Register of Historic Places
Continuation Sheet

Tom Thumb House
Middleborough (Plymouth County)
Massachusetts

Section number 7 Page 2

approximately four acres. More recently the lot has been subdivided leaving 1.45 acres with the Tom Thumb House.

The Tom Thumb House is a well preserved example of a three-bay, two-and-a-half story, Second Empire dwelling of which only a few survive in Middleborough. This house is the most noteworthy Middleborough example of the Second Empire Style with Italianate ornamentation. The three-bay plan, the most common form for Second Empire/Italianate residential buildings, displays a traditional center entrance hall with parlor on one side, and two rooms on the other. The central stair hall has rooms on each side of the second story hall as well.

The house is sheathed in wood clapboards with a slate mansard roof all on a raised brick foundation. The full length wrap porch adds dimension and embellishment to the already substantial and well detailed structure. There are two, two-story projecting octagonal bays, one on the east side, the other on the south side. At the rear there is an entrance porch running from the south side projecting bay to the southeast corner of the dwelling.

The mansard roof displays a concave curve and has two chimneys penetrating the roof on each side of the middle of the nearly flat top surface. On each of the four sides of the concave curve are two dormers each with pedimented moldings. The dormers all have one sash with two lights over two, a wide rake to the pedimented cornice and small drop finial brackets on each side of the sash. The pediments are open and have a bracket extending at the peak.

The embellished Italianate Style features on the Tom Thumb House include the raking eave overhang with paired molded brackets, the molded wood corner blocks to resemble stone quoins, the double door entrance, the window and door trim found throughout the building, and the decorative aspects of the porch and bays.

The main facade of the Tom Thumb House is striking with much visual detail. The central entrance is approached by wide replacement steps leading to a full length wrap porch. The double entrance door is typical in style of those found in the Italianate period with a roundheaded glass light on each of the two doors. The light has been replaced with a translucent mottled glass. The two-over-one long windows flanking the center entrance have slightly projecting molded frames and projecting plain sills. A cornice molding defines the edge of the porch ceiling. Second story windows are symmetrically placed over the first story bays. The central bay has a pair of windows with one-over-one lights in each sash, and a wide decorative lintel with circular cuts,

(continued)

United States Department of the Interior
National Park Service

**National Register of Historic Places
Continuation Sheet**

Tom Thumb House
Middleborough (Plymouth County)
Massachusetts

Section number 7 Page 3

three brackets and a wide ovolo crest molding. The flanking windows have two-over-two sash surrounded by a molded frame with rounded corners and the same projecting lintel with ovolo cornice, end brackets and a keystone-like design at the middle of the lintel.

The wrap porch consists of four bays on the north side and two on the west side. The supporting columns are paired, each with channeled panels, chamfered corners, square bases and defined capitals. The square bases have molded blocks that are accentuated with the use of a polychromatic paint scheme. Heavily scrolled brackets with button decoration on each side of the S-curve support the raking porch cornice and extend to the capital of each column. The cornice molding also included a bracket-like dentil molding similar to what is often termed a linen fold. Each set of paired columns is supported by a brick pier at the foundation level. Lattice screening shields the porch foundation. The porch railing is made of plain squared balusters tied together by a plain rail.

On the east side of the Tom Thumb House the raised brick foundation is clearly evident. The overriding feature of this elevation is the two-story, graduated, projecting bay also on a raised brick foundation. Octagonal in form, the bay has three sides with fenestration of two-over-two sash set into molding with rounded corners and a molded skirt at the first and second story. The concave line of the mansard roof on the main building is partially repeated in the roof of the first story section of the projecting bay which slopes in a concave curve to the second story part of the octagonal bay. Under the raking eave of each section of the bay is a linen fold dentil like molding similar to that found at the cornice of the wrap porch.

The rear of the dwelling, or south elevation, has a similar projecting octagonal bay which is two and one-half stories due to the raised half basement level at the base of the projecting bay. Small two-over-two sash windows are cut into the brick foundation of the raised basement projecting bay. There is a rear entrance on this side centered at the end of the entrance hall in line with the entrance on the main facade. A three bay porch anchors the projecting bay and extends from the bay to the corner of the dwelling. The paired columns, brackets, linen fold molding, balusters, and brick piers found on the main facade are repeated with the same decorative details. The rear elevation is also three bays wide and in symmetry with the main facade. First and second story windows retain moldings with rounded corners and projecting lintels with brackets similar to those described on the north or main elevation.

The west or side elevation which is partially screened by the wrap porch has an entrance door with steps at the south end of the wrap porch and one first story window. There

(continued)

United States Department of the Interior
National Park ServiceNational Register of Historic Places
Continuation SheetTom Thumb House
Middleborough (Plymouth County)
MassachusettsSection number 7 Page 4

are two second-story windows each with a projecting bracketed lintel similar to those on the main facade.

The interior plan is typical of a central hall Second Empire plan with a long parlor on one side of the front to back stair hall and two smaller rooms on the other side. The projecting bay in the long parlor adds light and an increased sense of space to the room. There is also a projecting bay on the rear which increases the scale of the rear small room on the other side of the stairhall. Running parallel to the two smaller rooms on the west wall of the house are a small rear stair hall, a small modern lavatory, and a small kitchen area which once had a dumb waiter. The main kitchen is in the basement of the house and has a chimney wall between it and the small eating area within the projecting bay at the rear of the house.

The second story plan displays two bedrooms on the east side of the stair hall, and two on the west side which are not symmetrical. There is also a bathroom tucked into the northwest corner of the second floor in which there is a small copper tub which is said to have been installed by the original owners.

Interior features in the Tom Thumb House are unique and found in no other Middleborough dwellings and probably in very few structures anywhere. Due to the small stature of the original owners features such as the stair rise, height of sinks, stove size and height of windows were modified to accommodate the original owners. There are other decorative features worth noting.

Singular to this house is a main staircase in the entrance hall which has twenty steps each with a six inch rise. The windows throughout the house, first and second story, front and back extend to the low level of 16 inches above the floor. Although there were sinks in second story bedrooms that were set approximately two feet above the floor all have been raised. The present owners have retained evidence of the original height when raising the sink in the master bedroom. In the basement kitchen there is a low cast iron stove which is 21 inches high, 36 inches wide and 22 inches deep. This was installed by Tom Thumb's widow when she lived in the house with her second husband who was also a person of small stature. The date of the Walker Range is 1898.

One of the fine detailed features is the molding in the parlor on the east side of the house. The elaborate crown molding of plaster displays a roping design with oak leaf pattern overlay. The projecting bay in this room is framed by heavily carved brackets with a button molding. The marble fireplace has carved pilasters with decorative moldings.

(continued)

United States Department of the Interior
National Park Service

**National Register of Historic Places
Continuation Sheet**

Tom Thumb House
Middleborough (Plymouth County)
Massachusetts

Section number 7 Page 5

In the dining room on the west side of the main entrance hall is a marble fireplace with a roundheaded opening and a carved scallop shell decoration. The large oak built-in china cupboard has oak leaves on the drawers, roundheaded glass in the doors, and a raised ovolo molding.

The staircase has heavily turned balusters with a pointed button decoration on each side of the lower block turnings. There is also a drop tab trim applied to the side of the rise of each step. The newel posts on each floor are heavily turned and have small finials.

The outbuildings at the Tom Thumb House do not contribute to the significance of the property. Old photographs show a no longer extant mansard roofed carriage house. Presently there are two outbuildings and one structure. The ca. 1930s long, one-story, cast concrete block garage/barn is situated on the west side of the property in close proximity to the house. It has a hipped roof and two-over-two windows and carriage shed doors. A lean-to has recently been built on the edge of the paddocks just east of the dwelling. A new fireplace and deck structure also has been added and is located in the back garden southwest of the house. With the exception of the former mansard roofed carriage house and the early twentieth century refreshment stand, neither structure of which is extant, there is no information about a privy or other outbuildings associated with the Tom Thumb house.

The landscape surrounding the Tom Thumb House includes mature oak trees lining the semi-circular drive which leads to the main entrance of the house. New white board paddock fencing has been added on the east side of the property. Also a low white board fence frames the house extending easterly from the southeast corner to the paddocks and westerly from the northwest corner to the low garage/barn.

Archaeological Description

While no prehistoric sites are currently recorded on the property it is possible that sites are present. Twenty prehistoric sites are recorded in the general area (within one mile). The physical characteristics of the property including a level, well drained land surface within 1,000 feet of the Nemasket River and a tributary stream indicate favorable locational criteria for native settlement and subsistence activities. The above information combined with the relatively small size of the parcel (1.45 acres) and 19th century construction indicate a moderate to high potential for locating significant prehistoric survivals.

(continued)

8. Statement of Significance

Applicable National Register Criteria

(Mark "x" in one or more boxes for the criteria qualifying the property for National Register listing.)

- A** Property is associated with events that have made a significant contribution to the broad patterns of our history.
- B** Property is associated with the lives of persons significant in our past.
- C** Property embodies the distinctive characteristics of a type, period, or method of construction or represents the work of a master, or possesses high artistic values, or represents a significant and distinguishable entity whose components lack individual distinction.
- D** Property has yielded, or is likely to yield, information important in prehistory or history.

Criteria Considerations

(Mark "x" in all the boxes that apply.)

Property is:

- A** owned by a religious institution or used for religious purposes.
- B** removed from its original location.
- C** a birthplace or grave.
- D** a cemetery.
- E** a reconstructed building, object, or structure.
- F** a commemorative property.
- G** less than 50 years of age or achieved significance within the past 50 years.

Narrative Statement of Significance

(Explain the significance of the property on one or more continuation sheets.)

9. Major Bibliographical References

Bibliography

(Cite the books, articles, and other sources used in preparing this form on one or more continuation sheets.)

Previous documentation on file (NPS):

- preliminary determination of individual listing (36 CFR 67) has been requested
- previously listed in the National Register
- previously determined eligible by the National Register
- designated a National Historic Landmark
- recorded by Historic American Buildings Survey # _____
- recorded by Historic American Engineering Record # _____

Areas of Significance

(Enter categories from instructions)

Architecture _____

Entertainment _____

Period of Significance

ca. 1871-1910 _____

Significant Dates

Significant Person

(Complete if Criterion B is marked above)

Tom Thumb _____

Cultural Affiliation

N/A _____

Architect/Builder

unknown _____

Primary location of additional data:

- State Historic Preservation Office
- Other State agency
- Federal agency
- Local government
- University
- Other

Name of repository:

Massachusetts Historical Commission _____

Middleborough Historical Commission _____

United States Department of the Interior
National Park ServiceNational Register of Historic Places
Continuation SheetTom Thumb House
Middleborough (Plymouth County)
MassachusettsSection number 7, 8 Page 6, 1

There is also a high potential for recovering significant historic archaeological remains on the property. Structural remains may survive on the property from a 19th century carriage house and refreshment stand both within the period of significance and associated with Tom Thumb and his wife. The concrete remains of an early 1900s egg house also exist on the property. Occupational related features (trash pits, privies, wells) may exist on the property though now have been identified to date either physically or in the documents similar features as well as structure remains of agriculturally related outbuildings may exist on the property from its pre 1864 use as part of the Warren Farm, however, these survivals if they exist are also undocumented at the present time.

(end)

8. STATEMENT OF SIGNIFICANCE

The Tom Thumb House retains its setting, displaying a large well defined Second Empire dwelling in a rural area of North Middleborough. It is reflective of the opulence displayed by a well known personage, Charles Sherwood Stratton (1838-1883), better known as General Tom Thumb of Phineas Barnum's circus. The property retains architectural and historical integrity and is significant for the period beginning in 1871, the approximate time at which the house was constructed, to 1910 when Tom Thumb's widow, Lavina Bump (1841-1919) and her second husband Count Primo Magri sold the house due to financial difficulties. The property retains integrity of location, setting, design, association, materials, workmanship, and feeling. The Tom Thumb House meets Criteria B and C of the National Register of Historic Places and is significant at the local level.

Colonial settlement of the land that became Middleborough began as early as 1663 when an act of the Colonial Legislature added the territory to the Town of Plymouth and then set it aside separately as the Town of Middleberry in 1668. The area was accumulated from purchases from the native Americans living in three major settlements at Nemasket, Titicut and Assawampsett. In 1734 a portion of one of the northern most purchases was set off as part of Halifax and as late as 1853 a large part of the most substantial purchase was separately incorporated as Lakeville.

The First Church was established in 1694 and as early as 1716 school districts were adopted. The population increased steadily with the exception of the mid-to-late 1800s when Lakeville was separately incorporated from a large part of the Sixteen Shilling Purchase of 1675, substantially reducing the territory of Middleborough. Early economy

(continued)

United States Department of the Interior
National Park Service

**National Register of Historic Places
Continuation Sheet**

Tom Thumb House
Middleborough (Plymouth County)
Massachusetts

Section number 8 Page 2

was based on agricultural fields and some early mill and furnace sites the latter of which used the rich resources of bog ore to produce hardware. Throughout the development of Middleborough when manufacturing of shoes, straw products, bricks, and lumber products such as boxes grew from cottage industries, the agricultural fields continued to play a significant role in the development of the community.

The area known as Warrentown derived its name from the Warren family who lived in the area and were descended from Jabez Warren (1647-1701) one of the earliest settlers of the area. Once part of the Twenty Six Men Purchase, Warrentown had a grist, shingle, and saw mill by the mid-eighteenth century built by John Warren and others. The other prominent family and significant to the Tom Thumb House were the Bumps who were descended from Edward Bumpus one of the original owners of the Twenty-Six Men's Purchase and the Purchase Purchase to the west of Warrentown.

In 1864 Charles Stratton (1838-1883) purchased the Warren Farm from Nahum M. Tribou who was related to Lavina Warren Bump by marriage to her mother's sister Sally. Charles S. Stratton better known as General Tom Thumb of Phineas Barnum's Circus, had come to Middleborough following his marriage to local resident Lavina Warren Bump who had been born in the small Cape Cod cottage on the north side of Plymouth Street in Warrentown. Lavina Bump (1841-1919) was one of six children of whom two were persons of small stature, Lavina and her sister Hildah, better known as Minnie.

Charles Stratton was born in Bridgeport Connecticut and joined Phineus T. Barnum's circus soon after 1842 when Barnum, also from Bridgeport, first learned about Stratton, who soon would assume the show name of General Tom Thumb. Barnum advertised the 34 inch high Tom Thumb as "a wonderful dwarf eleven years old just arrived from England." It is interesting to note that there are several conflicting accounts of Tom Thumb's actual height. Based on the size of his carriage, clothing and photographs with his 32 inch wife his accepted height is 33 or 34 inches.

Lavina Bump was born in Middleborough to James S. and Hildah Warren Bump. She was invited to enter show business when she was sixteen years old and spent four years on a Spaulding and Roger's Showboat on the Mississippi River, after which Lavinia returned to Middleborough to teach school. Soon there after Phineus Barnum heard about Lavinia Bump and invited her to join his then American Museum in New York. Barnum changed the 32 inch high woman's name to Lavinia Warren, using her mother's maiden name.

(continued)

United States Department of the Interior
National Park ServiceNational Register of Historic Places
Continuation SheetTom Thumb House
Middleborough (Plymouth County)
MassachusettsSection number 8 Page 3

Tom Thumb and Lavina Bump became engaged in 1862 and were married at an enormously large and well publicized wedding on February 10, 1863 at Grace Church in New York City with a reception for the 2000 guests at the Metropolitan Hotel. The couple then travelled with Phineas Barnum's show to Europe and on a world tour from 1869 to June of 1871. When they were not travelling they returned to Lavina's home in Middleborough to rest.

Following the world tour the well known couple planned their home in Middleborough to which they retreated when work allowed. They had purchased the land of the Warren Farm in 1864 before beginning a two year tour to Europe. The house was not built until after the world wide tour which followed the European tour. Tom Thumb's father is said to have stayed in Middleborough to supervise the construction of the substantial Second Empire dwelling. The location of General and Mrs. Tom Thumb's house in Warrentown brought Lavina back to her place of birth where her parents and family still lived. She had been born in the modest mid-eighteenth century Cape on the north side of Plymouth Street and grew up in a Federal Style farmhouse on the corner of Plymouth and Summer Streets. This dwelling has since been divided into two separate dwellings retaining little integrity.

The couple is said to have welcomed many well known persons in their Middleborough home which was built to entertain others as well as accomodate the small statured couple. Tom Thumb died in his home in Middleborough on July 15, 1883 and was returned to Bridgeport Connecticut for interment.

Tom Thumb's widow continued with the Phineas Barnum circus and soon met Count Primo Magri and his brother Baron Ernest Magri from Bologna Italy. The brothers, also persons of small stature, had been given their titles by Pope Pius IX. In 1885 Lavinia Bump (Warren) became a Countess when she married Count Primo Magri at Church of the Holy Trinity in New York City. The three small persons, the Count and Countess and the Baron who travelled together, continued to return to the Tom Thumb House in Middleborough. Eventually they retired to Middleborough and opened a refreshment stand on the property known as "Primo's Pastime". Located near the front of the property and west of the house the stand is no longer extant, but is recorded in photographs displaying the Tom Thumb House in the background.

Due to financial difficulties the small couple had to sell the Tom Thumb House in 1910. It was advertised at that time as a house and stable and two acres for \$2400. This marked the end of an era and the unique life style led at the Tom Thumb House. The couple remained in Middleborough. Lavinia died a Countess in 1919 at the age of 78

(continued)

United States Department of the Interior
National Park Service

National Register of Historic Places Continuation Sheet

Tom Thumb House
Middleborough (Plymouth County)
Massachusetts

Section number 8 Page 4

years and was taken to Connecticut to be buried with her first husband, Charles Stratton also known as Tom Thumb. The Count died in Middleborough and is buried at St. Mary's Cemetery in the same town.

The Tom Thumb House is the only property in Middleborough that is associated with the small statured couple and it is the only known extant house associated with Tom Thumb. His birth place in Bridgeport is no longer extant and a small cottage that the couple owned on Lake Assawampsett in Lakeville, Massachusetts is not known to survive. Furthermore the Tom Thumb House has features that are unique to this building and which articulate the small stature of its first owners, the point on which their fame was built.

The Second Empire dwelling displays many fine architectural features noted in the description of the property. The unique features contribute additional significance to the property for the light they shed on the small statured couple for whom the house was built. It is unusual to find the bottom sill of all windows throughout a house being only 16 inches from the floor. This feature enabled the small couple to enjoy the same contact with the outdoors that most people experience in all buildings with windows. The short rise of each step on the staircase was essential for General and Mrs. Tom Thumb to use the full house. As was common practice in the late nineteenth century a small wash sink was built into bedrooms. Although at least two bedrooms including the master bedroom retain sinks, they have been raised from the original height of twenty-four inches above the floor. One other feature not installed during Tom Thumb's lifetime is the small scale cast iron stove in the basement kitchen. This was added by Lavina and her second husband, also a person of small stature. By the turn of the century, they were living in Middleborough and experiencing financial difficulties, thus it can be assumed that Lavina did not have help in maintaining the house as she had with her first husband, Tom Thumb. Thus the small stove was an important addition and once again is a reminder of the challenge for the small statured persons living in this unique dwelling.

The future of the property is assured at this time due to the foresight and understanding of the present owners. The importance of the structure and its association with the well known couple, General and Mrs. Tom Thumb, has been recognized by the owners who have used old photographs to research the buildings historic appearance, and have employed expert craftsmen to restore the property's unique architectural features.

(continued)

United States Department of the Interior
National Park Service

National Register of Historic Places Continuation Sheet

Tom Thumb House
Middleborough (Plymouth County)
Massachusetts

Section number 8, 9 Page 5, 1

Archaeological Significance

Although numerous prehistoric sites have been recorded in Middleborough, few sites have been systematically studied which limits their interpretative value making surviving sites in the area potentially significant. The location of the Tom Thumb House in close proximity to the Nemasket River and one of its tributary streams offers the potential to study site of that drainage including aspects of native settlement and subsistence systems in the area.

Historic archaeological remains described above have the potential for providing detailed information on the social, cultural and economic patterns that characterized a single family, all with similar physical disabilities (height) in the entertainment business. Structural remains of the carriage house and refreshment stand can help reconstruct components which no longer survive careful analysis of occupational related features, if they exist, can provide valuable insights into the day to day lives of these rather unique people and how they differed or were similar to others in their every day life. Potential features associated with the refreshment stand can also provide data on how Lavina adapted to life after Tom Thumb.

(end)

9. MAJOR BIBLIOGRAPHICAL REFERENCES

Massachusetts Historical Commission, Narrative History of Middleborough, Survey of 1985.

Middleborough Historical Association, "The Antiquarian" (est. 1922), Vol. VI, No.1 & 3; Vol. XI, No.3, Vol.XIII, No.1.

Romaine, Mertie. History of Town of Middleboro, Massachusetts, (New Bedford, 1967).

Romaine, Mertie. General Tom Thumb and His Wife, (Taunton, 1976).

Weston, Thomas. History of Town of Middleboro, Massachusetts, (Boston, 1906).

(end)

United States Department of the Interior
National Park Service

**National Register of Historic Places
Continuation Sheet**

Tom Thumb House
Middleborough (Plymouth County)
Massachusetts

Section number 10 Page 1

10. GEOGRAPHICAL DATA

VERBAL BOUNDARY DESCRIPTION

See attached Middleborough Assessor's Map U-19, Lots 16 and 16-1 and certified plan recorded at the Plymouth County Registry of Deeds (1986), showing Lots 1 and 1-A with 230.03 feet of frontage on Plymouth Street.

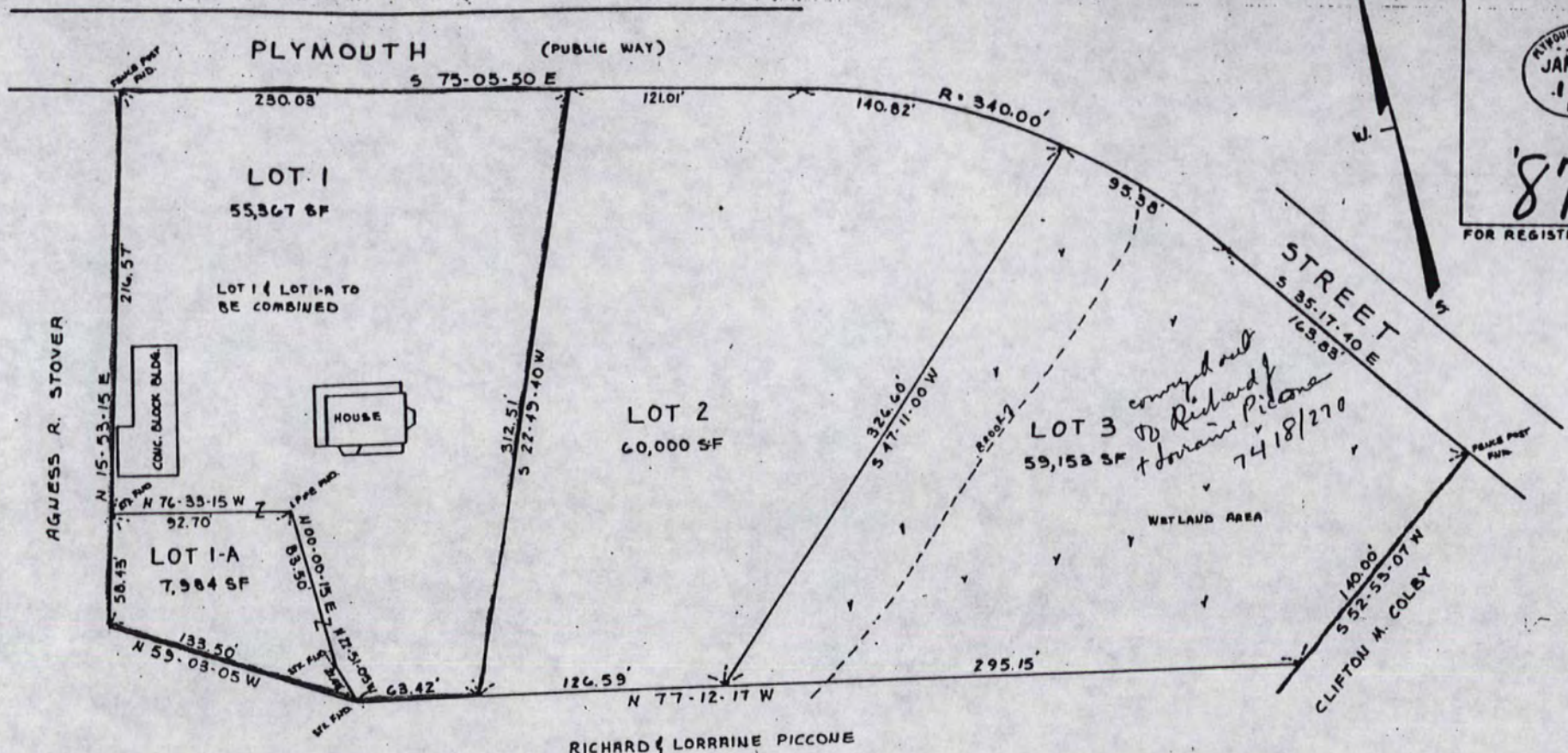
BOUNDARY JUSTIFICATION

The 1.45 acre property includes only the house and surrounding land and does not resemble early land division of the Warren Farm. This is the most appropriate boundary for the purposes of the National Register nomination due to deed descriptions and present ownership. The Tom Thumb House is significant for its association with an important person and is not significant for its association with farming or early boundaries of the Warren Farm.

(end)

PLYMOUTH COUNTY REGISTER OF DEEDS
 JAN 7 1987
 1-7-87
 RECORDED

'87-20
 FOR REGISTRY USE ONLY

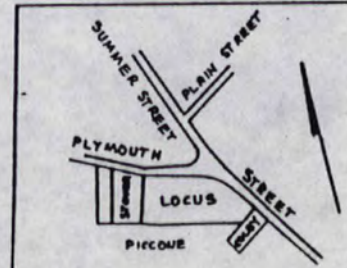


I CERTIFY THAT THIS PLAN CONFORMS WITH THE RULES AND REGULATIONS OF THE REGISTERS OF DEEDS

Joseph Salemi
 DEC 11, 1986



Plymouth County Registry of Deeds
 PLAN BOOK 28 PAGE 957



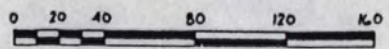
LOCUS MAP

APPROVAL UNDER THE SUBDIVISION CONTROL LAW NOT REQUIRED
 MIDDLEBORO PLANNING BOARD
 Roger A. Nicholas DEC 12, 1986

ROGER A. NICHOLAS
 MIDDLEBORO TOWN PLANNER
 FOR THE PLANNING BOARD

PLAN OF LAND
 PLYMOUTH ST. MIDDLEBORO, MASS.
 PREPARED FOR
 JOSEPH SALEMI

BY
 UNITED TECHNICAL DESIGN INC.
 430 SOUTH MAIN ST., COHASSET MA.
 1" = 40' DEC. 11, 1986



Tom Thumb House
 351 Plymouth Street
 Middleborough (Plymouth County)
 Massachusetts

Certified Plan: 1986
 Lots 1 & 1A (1.45 acres)

'87-20

UNITED STATES DEPARTMENT OF THE INTERIOR
NATIONAL PARK SERVICE

NATIONAL REGISTER OF HISTORIC PLACES
EVALUATION/RETURN SHEET

REQUESTED ACTION: NOMINATION

PROPERTY NAME: Thumb, Tom, House

MULTIPLE NAME:

STATE & COUNTY: MASSACHUSETTS, Plymouth

DATE RECEIVED: 3/15/93 DATE OF PENDING LIST: 3/31/93
DATE OF 16TH DAY: 4/16/93 DATE OF 45TH DAY: 4/29/93
DATE OF WEEKLY LIST:

REFERENCE NUMBER: 93000298

NOMINATOR: STATE

REASONS FOR REVIEW:

APPEAL: N DATA PROBLEM: N LANDSCAPE: N LESS THAN 50 YEARS: N
OTHER: N PDIL: N PERIOD: N PROGRAM UNAPPROVED: N
REQUEST: N SAMPLE: N SLR DRAFT: N NATIONAL: N

COMMENT WAIVER: N

ACCEPT RETURN REJECT 4/16/93 DATE

Entered in the
National Register

ABSTRACT/SUMMARY COMMENTS:

RECOM./CRITERIA _____
REVIEWER _____
DISCIPLINE _____
DATE _____

DOCUMENTATION see attached comments Y/N see attached SLR Y/N

CLASSIFICATION

NATIONAL PARK SERVICE

count

resource type

NATIONAL REGISTER OF HISTORIC PLACES EVALUATION RETURN SHEET

STATE/FEDERAL AGENCY CERTIFICATION

REQUESTED ACTION: NOMINATION

FUNCTION

historic

current

PROPERTY NAME: Trump, Tom, House

DESCRIPTION

MULTIPLE NAME:

architectural classification

materials

STATE & COUNTY: MASSACHUSETTS, Plymouth

descriptive text

DATE RECEIVED: DATE OF 15TH DAY: DATE OF WEEKLY LIST: DATE OF FILING LIST: DATE OF 15TH DAY: DATE OF WEEKLY LIST:

SIGNIFICANCE

Period Areas of Significance--Check and justify below REFERENCE NUMBER

Specific dates Builder/Architect NOMINATOR: STATE

Statement of Significance (in one paragraph) REASONS FOR REVIEW:

summary paragraph

completeness APPEAL: N DATA PROBLEM: N

clarity OTHER: N PDIL: N

applicable criteria REQUEST: N SAMPLE: N

justification of areas checked

relating significance to the resource COMMENT WAIVER: N

context

relationship of integrity to significance ACCEPT: RETURN

justification of exception

other ABSTRACT SUMMARY COMMENT:

BIBLIOGRAPHY

GEOGRAPHICAL DATA

acreage

verbal boundary description

UTMs

boundary justification

ACCOMPANYING DOCUMENTATION/PRESENTATION

sketch maps

USGS maps

photographs

presentation

OTHER COMMENTS

Questions concerning this nomination may be directed to

RECOM. CRITERIA REVIEWER DISCIPLINE DATE

Phone

Signed

Documentation see attached comments Y/N and attached SFR Y/N Date



The Tom Thumb House

351 Plymouth Street

Middleborough, MA

Grethen G Schuler - photographer

10/91

Negative with property owner

Main/north facade + east facade looking southwest

PHOTO # 1 of 11



The Tom Thumb House

351 Plymouth STREET

Middleborough, MA

BRETTEN G. SCHULZ - Photographer

10/91

Negative with property owner

South + East facades looking north

PHOTO # 2 OF 11



The Tom Thumb House
351 Plymouth Street
Middleborough, MA

Gretchen G Schuler - photographer

10/91

Negative with property owner

South & West facades looking northeast

PHOTO # 3 OF 11



The Tom Thumb House

351 Plymouth Street

Middleborough, MA

Gretchen G. Schuler - photographer

10/91

Negative with property owner

Main Entrance - North facade looking south

PHOTO # 4 of 11



Middleboro, MA
Tom Thumb House
351 Plymouth St.
GRETCHEN SCHUBER
July 1991
Roll 1, Frame 3

PHOTO # 5 OF 11



Middleboro, MA
Tim Thumb House
351 Plymouth St
GRETHER SCHULLER
July 1991
Roll 1 Frame 13

PHOTO # 6 OF 11



MIDDLEBORO, MA
Tom Thumb's House
351 Plymouth St
GRETCHEN SCHULLER
July 1991
Roll 1 Frame #12

PHOTO # 7 OF 11



MIDDLEBURY, VT
Tom Themb House
351 Plymouth St
GRETTEN SCHULER

July 1991

Roll 1 Frame 18

PHOTO # B OF 11



Middleborough, MA
Tom Thurnb House
351 Plymouth St
Gretchen Schulse
October 1991

Roll 2 Frame 10
Stair case with short risers

PHOTO # 9 OF 11



Middleborough, MA

Tom Thomb House

Grethor Schuler

October 1991

Roll 2 Frame 4

Projecting bay + plaster moldings in
living room

PHOTO # 10 OF 11

m

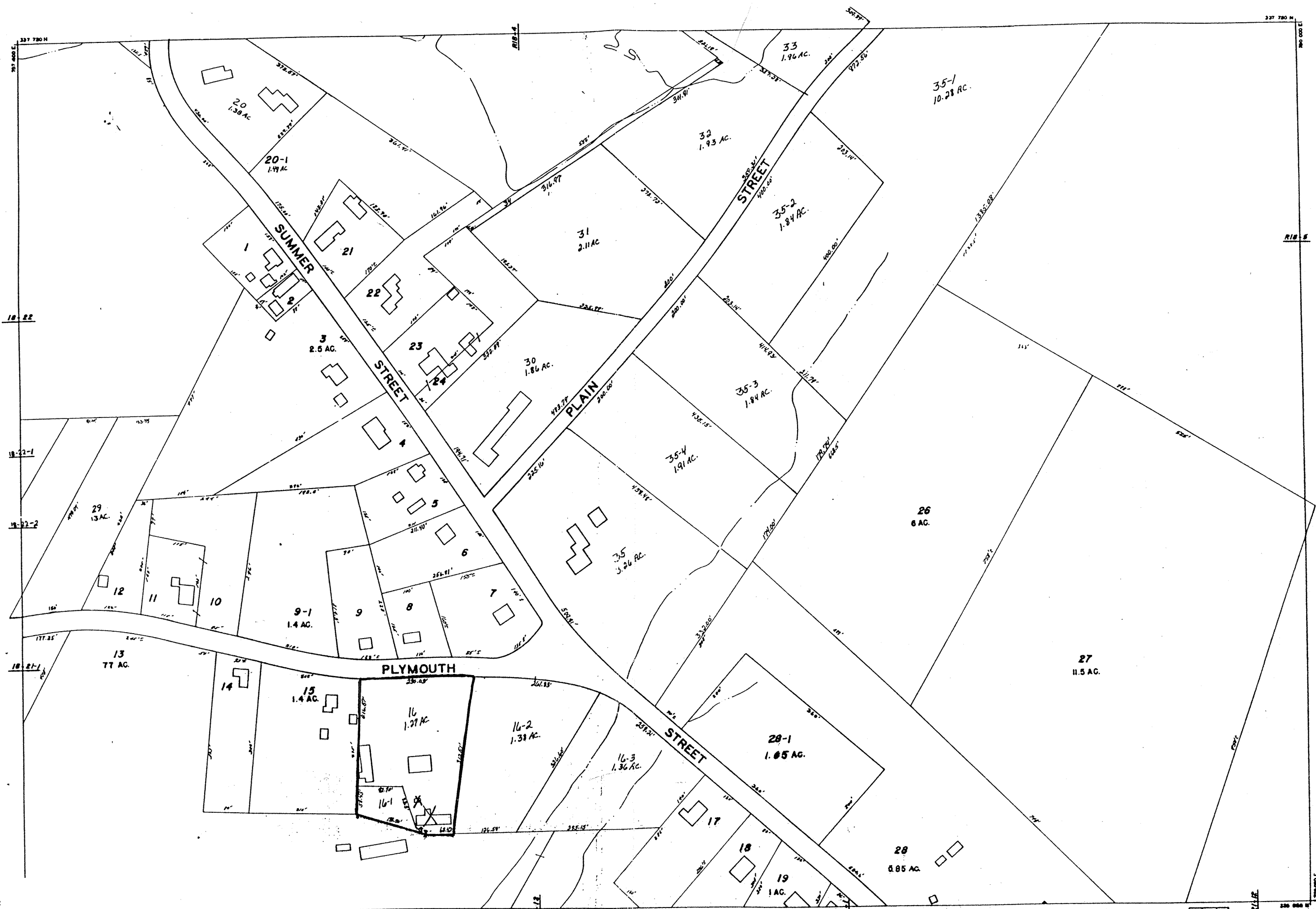


Middleboro, MA
Tom Thumbo House
351 Plymouth St
Grafton SCITU
October 1991

Roll 2 Frame 3
Small 1898 cast iron stove
22" high to cook surface

PHOTO # 11 OF 11

THESE PLANS ARE FOR TAX ASSESSMENT
ORIENTATION PURPOSES ONLY. THE FIGURES
GIVEN ARE NOT THE RESULTS OF GROUND
SURVEY, AND ARE NOT TO BE USED FOR
WRITING DEEDS OR OTHER INSTRUMENTS.



Tom Thumb House
351 Plymouth Street
Middleborough (Plymouth County)
Massachusetts

COL - EAST INC.
DARTON & PITTSFIELD

MIDDLEBOROUGH



REV. 1/1/91	REV. 1/1/91	REV. 1/1/91	REV. 1/1/91	REV. 1/1/91
REV. 1/1/91	REV. 1/1/91	REV. 1/1/91	REV. 1/1/91	REV. 1/1/91
REV. 1/1/91	REV. 1/1/91	REV. 1/1/91	REV. 1/1/91	REV. 1/1/91
REV. 1/1/91	REV. 1/1/91	REV. 1/1/91	REV. 1/1/91	REV. 1/1/91

Assessors Map #U19, Lots 16 & 16-1
Revised: 1/1/91

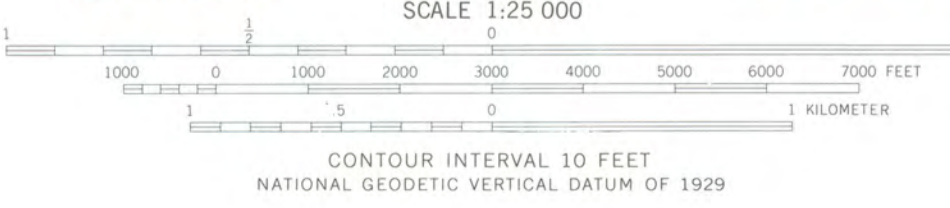
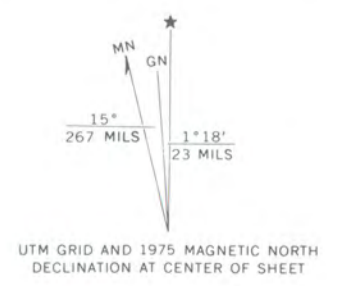
Rev. 1/1/91

U19



TOM THUMB HOUSE
MIDDLEBOROUGH (PLYMOUTH CTY)
MASSACHUSETTS
UTM REF: 19 340890 41647590

Mapped, edited, and published by the Geological Survey
Control by USGS, NOS/NOAA, and Massachusetts Geodetic Survey
Planimetry by photogrammetric methods from aerial photographs.
Topography by planimetric survey 1936-1937. Revised from aerial
photographs taken 1974. Field checked 1975
Polyconic projection. 1927 North American datum
10,000-foot grid ticks based on Massachusetts coordinate
system, mainland zone
1000-meter Universal Transverse Mercator grid.
zone 19
Red tint indicates area in which only landmark buildings are shown



ROAD CLASSIFICATION
Primary highway, hard surface ———— Light-duty road, hard or improved surface ————
Secondary highway, hard surface ———— Unimproved road ————
Interstate Route ———— U. S. Route ———— State Route ————

CONTOUR INTERVAL 10 FEET
NATIONAL GEODETIC VERTICAL DATUM OF 1929
FOR SALE BY U.S. GEOLOGICAL SURVEY
DENVER, COLORADO 80225, OR RESTON, VIRGINIA 22092
A FOLDER DESCRIBING TOPOGRAPHIC MAPS AND SYMBOLS IS AVAILABLE ON REQUEST

BRIDGEWATER, MASS.
N4152.5-W7052.5/7.5
1977
AMS 6867 IV NW—SERIES V814



RECEIVED

MAR 15 1993

NATIONAL
REGISTER

March 3, 1993

Carol Shull
National Register of Historic Places
Department of the Interior
National Park Service
P.O. Box 37127
Washington, DC 20013-7127

Dear Ms. Shull:

Enclosed you will find the following nomination form:

Tom Thumb House, 351 Plymouth Street, Middleborough (Plymouth County),
Massachusetts, 02346.

The nomination has been voted eligible by the State Review Board and has been signed by the State Historic Preservation Officer. Owners were notified of pending State Review Board consideration 30-75 days before the meeting and were afforded the opportunity to comment.

Sincerely,

Betsy Friedberg
National Register Director
Massachusetts Historical Commission

enclosure

cc: Joseph and Nadia Salemi
Gretchen Schuler, Preservation Consultant
Janet Griffith, Chairperson, Middleborough Historical Commission
Moushah C. Krikorian, Chairman, Middleborough Board of Selectmen
Marjorie Judd, Middleborough Public Library