



Northport Historic District
Northport, Alabama, Tuscaloosa
County

Greg Brough, September, 1979
Tuscaloosa County Historical
Preservation Authority, P. O. Box
1776, Tuscaloosa 35401

Looking north, northeast at the
corner of Park Street and Main
Avenue, left #101, right #102.

Photo number: 175

MAY 1 1980

FEB 29 1980



Northport Historic District
Northport, Alabama, Tuscaloosa
County

Greg Brough, September, 1979
Tuscaloosa County Historical
Preservation Authority, P. O. Box
1776, Tuscaloosa 35401

Looking northwest on Main Avenue,
left #49.

Photo number: 2/75

MAY 1 1980

FEB 29 1980



W 12 STREET

Northport Historic District
Northport, Alabama, Tuscaloosa
County

Greg Brough, September, 1979
Tuscaloosa County Historical
Preservation Authority, P. O. Box
1776, Tuscaloosa 35401

Looking north at the corner of
10th Street and Main Avenue,
center #50, right #48.

Photo number: 3/75
MAY 1 1980

FEB 29 1980



Northport Historic District
Northport, Alabama, Tuscaloosa
County

Greg Brough, September, 1979
Tuscaloosa County Historical
Preservation Authority, P. O. Box
1776, Tuscaloosa, Alabama 35401

Looking west on 10th Street toward
Main Avenue from the edge of the
district.

MAY 1 1980

Photo number: 4/75

FEB 29 1980



Northport Historic District
Northport, Alabama, Tuscaloosa
County

Jackson R. Stell, September, 1979
Alabama Historical Commission

Looking south, southeast on Main
Avenue.

Photo number: 5/75-
MAY 1 1980

FEB 29 1980



Northport Historic District
Northport, Alabama, Tuscaloosa
County

Jackson R. Stell, September, 1979
Alabama Historical Commission

Looking north, northeast on Main
Avenue from the 9th Street inter-
section, right #47.

Photo number: 6/75 MAY 1 1980

FEB 29 1980



Northport Historic District
Northport, Alabama, Tuscaloosa
County

Jackson R. Stell, September, 1979
Alabama Historical Commission

Looking south on Main Avenue from
just south of the 9th Street inter-
section.

Photo number: 7/75- MAY 1 1980

FEB 29 1980



Northport Historic District
Northport, Alabama, Tuscaloosa
County

Greg Brough, September, 1979
Tuscaloosa County Historical
Preservation Authority, P. O. Box
1776, Tuscaloosa 35401

Looking north, northeast on Main
Avenue at left #47 and right #46.

Photo number: 8/75

MAY 1 1980

FEB 29 1980



Northport Historic District
Northport, Alabama, Tuscaloosa
County

Greg Brough, September, 1979
Tuscaloosa County Historical
Preservation Authority, P. O. Box
1776, Tuscaloosa 35401

Looking west onto 7th Street from
Main Avenue (7th Street is not
paved) #42.

MAY 1 1980

Photo number:

9/25-

FEB 29 1980



Northport Historic District
Northport, Alabama, Tuscaloosa
County

Jackson R. Stell, September, 1979
Alabama Historical Commission

Looking north, northwest on Main
Avenue, showing #44 center and
#43 right.

Photo number: 10

MAY 1 1980

FEB 29 1980



Northport Historic District
Northport, Alabama, Tuscaloosa
County

Jackson R. Stell, September, 1979
Alabama Historical Commission

Looking south on Main Avenue,
left #38.

Photo number: 11/75
MAY 1 1980

FEB 29 1980



Northport Historic District
Northport, Alabama, Tuscaloosa
County

Jackson R. Stell, September, 1979
Alabama Historical Commission

Looking north, northeast on Main
Avenue, right #41.

Photo number: 12 *175*

MAY 1 1980

FEB 29 1980



Northport Historic District
Northport, Alabama, Tuscaloosa
County

Marie S. Ball, March, 1979
Tuscaloosa County Historical
Preservation Authority, P. O. Box
1776, Tuscaloosa 35401

Looking east at #39.

Photo number: 13/⁷⁵ MAY 1 1980

FEB 29 1980



Northport Historic District
Northport, Alabama, Tuscaloosa
County

Greg Brough, September, 1979
Tuscaloosa County Historical
Preservation Authority, P. O. Box
1776, Tuscaloosa 35401

Looking south on Main Avenue
center #30; right #36.

Photo number: 14/75-

1980

FEB 29 1980



Northport Historic District
Northport, Alabama, Tuscaloosa
County

Marie S. Ball, July, 1979
Tuscaloosa County Historical
Preservation Authority, P. O. Box
1776, Tuscaloosa 35401

Looking west at #36.

Photo number: 15/25
MAY 1 1980

FEB 29 1980



Northport Historic District
Northport, Alabama, Tuscaloosa
County

Ellen Mertins, July, 1979
Alabama Historical Commission

Looking northwest on Main Avenue
at #s 36, and 37.

Photo number: 16 / MAY 1 1980
75

FEB 29 1980



ERVINS & ERVINS

E

1974
MAY
20

Northport Historic District
Northport, Alabama, Tuscaloosa
County

Jackson R. Stell, September, 1979
Alabama Historical Commission

Looking east on Main Avenue from
left #s 35, 34, and 33.

Photo number: 17/75
MAY 1 1980

FEB 29 1980



Two windows on the white building.

HAMILTON'S T.V. SERVICE
FACTORY DIRECT SERVICE
ZOOM
REPAIRS
REPAIRS
REPAIRS

POLICE

Partial view of a white car in the foreground.

A line of cars parked along the street on the right side.

Northport Historic District
Northport, Alabama, Tuscaloosa
County

Jackson R. Stell, September, 1979
Alabama Historical Commission

Looking southeast at the inter-
section of Main Avenue and 5th
Street.

Photo number:

18/25

MAY 1

1980

FEB 29 1980



Northport Historic District
Northport, Alabama, Tuscaloosa
County

Jackson R. Stell, September, 1979
Alabama Historical Commission

Looking west on 5th Street from
the intersection of Main Avenue.

Photo number: 19⁷/₇₅ MAY 1 1980

FEB 29 1980



1955
M.H.

Northport Historic District
Northport, Alabama, Tuscaloosa
County

Ellen Mertins, June, 1979
Alabama Historical Commission

Looking northeast at corner of
Main Avenue and 5th Street to left
#33 and #53.

Photo number:

20/75 MAY 1

1980

FEB 29 1980



P. ROBERTSON

Western Auto

HELLEN'S

CLEARANCE SALE

Northport Historic District
Northport, Alabama, Tuscaloosa
County

Greg Brough, September, 1979
Tuscaloosa County Historical
Preservation Authority, P. O. Box
1776, Tuscaloosa 35401

Looking south on Main Avenue from
intersection of 5th Street.

Photo number: 21/75 ^{MAY} 1 1980

FEB 29 1980

HAMILTON'S T.V. SERVICE
FACTORY AUTHORIZED SERVICE
ZENITH  
• TELEVISION
• STEREOS
• APPLIANCES

ZENITH COLOR
SYSTEM 3
Hamilton's
T.V. SERVICE



Northport Historic District
Northport, Alabama, Tuscaloosa
County

Greg Brough, September, 1979
Tuscaloosa County Historical
Preservation Authority, P. O. Box
1776, Tuscaloosa 35401

Looking east on 5th Street from
intersection of Main Avenue.

Photo number:

22/75
MAY 1 1980

FEB 29 1980



←
AIRPORT

SPIN

SPIN

Northport Historic District
Northport, Alabama, Tuscaloosa
Alabama

Greg Brough, September, 1979
Tuscaloosa County Historical
Preservation Authority, P. O. Box
1776, Tuscaloosa 35401

Looking north on Main Avenue from
intersection of 5th Street.

Photo number: 23/25 ^{MAY 1} 1980

FEB 29 1980



CRAWFORD WOODWORKS & SUPPLY

CRAWFORD WOODWORKS & SUPPLY
CRAWFORD WOODWORKS & SUPPLY
CRAWFORD WOODWORKS & SUPPLY

LEFT TURN

INSTANT CREDIT

GRAND SALE

NO PARKING

NO PARKING

WOODWORKS

7

Northport Historic District
Northport, Alabama, Tuscaloosa
County

Greg Brough, September, 1979
Tuscaloosa County Historical
Preservation Authority, P. O. Box
1776, Tuscaloosa 35401

Looking west on 5th Street from the
intersection of Main Avenue.

Photo number: 24~~25~~-MAY 1 1980

FEB 29 1980



LOW RATES NATIONWIDE INSURANCE SAVE HERE

ANDERS HARDWARE CO. NATIONWIDE INSURANCE PAINT FLOORING EQUIPMENT

PERIB

Northport Historic District
Northport, Alabama, Tuscaloosa
County

Jackson R. Stell, September, 1979
Alabama Historical Commission

Looking southwest at the rear of
building #s 20, 21, 22 from
5th Street.

Photo number: 25/75 MAY 1 1980

FEB 29 1980



LUMBER

Mr. Fick's
ALL APPLIANCE REPAIR
BECK & SON
LUMBER
E. SNIDER
CABINETS



Northport Historic District
Northport, Alabama, Tuscaloosa
Alabama

Jackson R. Stell, September, 1979
Alabama Historical Commission

Looking west on 5th Street from
the east edge of the district.

Photo number : 26/MAY 1 1980
/75

FEB 29 1980

188
ntry
EST. 1948

RETCOM

RETCOM

Z



Northport Historic District
Northport, Alabama, Tuscaloosa
County

Jackson R. Stell, September, 1979
Alabama Historical Commission

Looking west at rear of from left
#s 22, 24, 26, and 28.

Photo number: 27/75

MAY 1 1980

FEB 29 1980



Northport Historic District
Northport, Alabama, Tuscaloosa
County

Marie S. Ball, July, 1979
Tuscaloosa County Historical
Preservation Authority, P. O. Box
1776, Tuscaloosa 35401

Looking south on Main Avenue from
just south of 5th Street.

Photo number: 28/75 MAY 1 1980

FEB 29 1980



ERVINS

ERVINS



Northport Historic District
Northport, Alabama, Tuscaloosa
County

Greg Brough, September, 1979
Tuscaloosa County Historical
Preservation Authority, P. O. Box
1776, Tuscaloosa 35401

Looking north on Main Avenue from
just south of intersection of 5th
Street.

Photo number : 29/75

MAY 1 1980
FEB 29 1980



ANDERS HARDWARE

Stans Shop

Northport Historic District
Northport, Alabama, Tuscaloosa
County

Greg Brough, September, 1979
Tuscaloosa County Historical
Preservation Authority, P. O. Box
1776, Tuscaloosa 35401

Looking northeast at the east side
of Main Avenue between 4th Street
and 5th Street.

Photo number: 30/75-
MAY 1 1980
FEB 29 1980



Northport Historic District
Northport, Alabama, Tuscaloosa
County

Jackson R. Stell, September, 1979
Alabama Historical Commission

Looking west on 4th Street from
west of Main Avenue; left #9;
right #13.

Photo number: 31/MAY 1 1980
75

FEB 29 1980



estone

CITY CAFE

SHOP
TON

FUGGITT'S

Northport Historic District
Northport, Alabama, Tuscaloosa
County

Greg Brough, September, 1979
Tuscaloosa County Historical
Preservation Authority, P. O. Box
1776, Tuscaloosa 35401

Looking north on Main Avenue from
intersection of 4th Street.

Photo number: 32/₂₅ MAY 1 1980

FEB 29 1980



BUSH'S

Coca-Cola
BEVERAGE SHOP
U.S. Baker

Pritchett Cabinet Shop

GIFTS
PHOTOS
TELEVISIONS

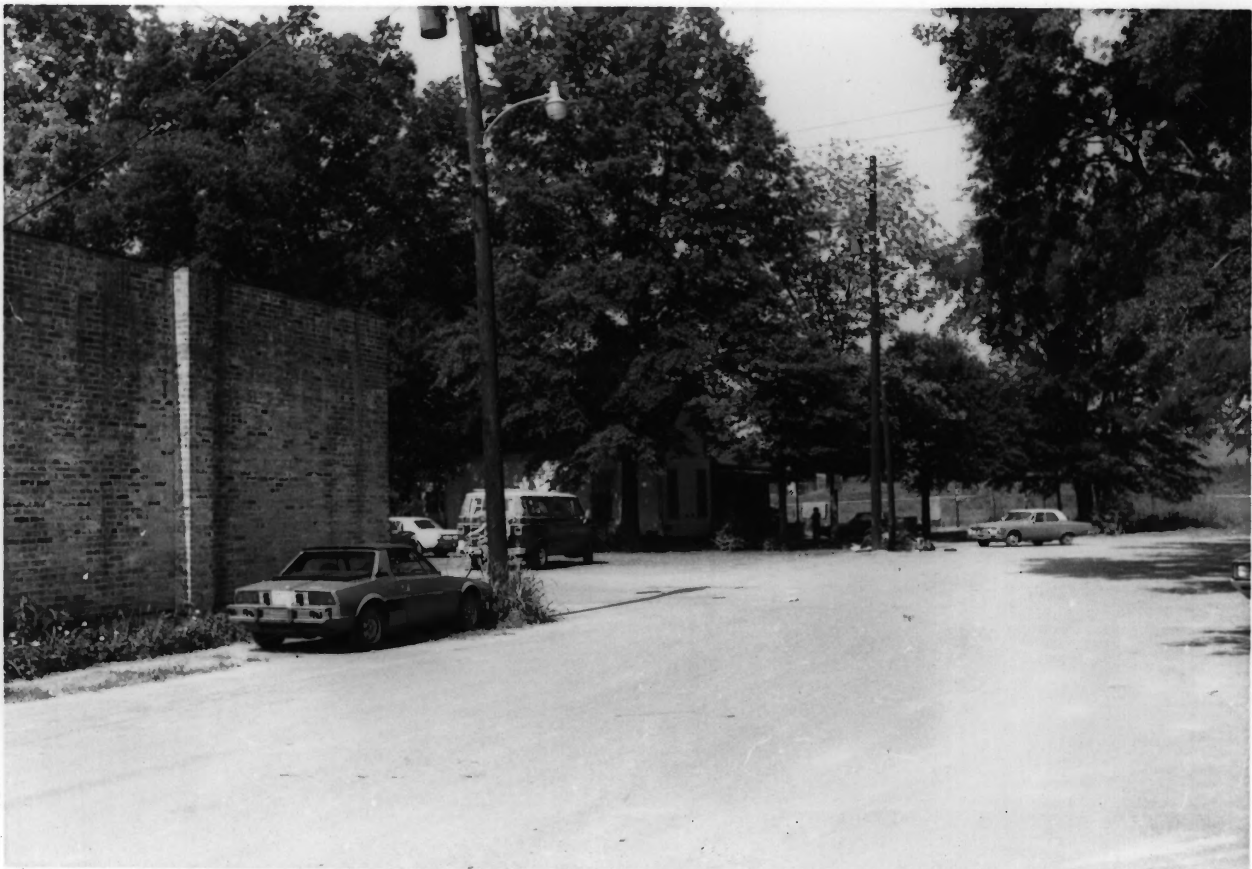
Northport Historic District
Northport, Alabama, Tuscaloosa
County

Greg Brough, September, 1979
Tuscaloosa County Historical
Preservation Authority, P. O. Box
1776, Tuscaloosa 35401

Photo number: 33/75-

MAY 1 1980

FEB 29 1980



Northport Historic District
Northport, Alabama, Tuscaloosa
Alabama

Ellen Mertins, July, 1979
Alabama Historical Commission

Looking east on 4th Street at
#52, from Main Avenue.

Photo number #34/75

MAY 1 1980

FEB 29 1980



Northport Historic District
Northport, Alabama, Tuscaloosa
Alabama

Marie S. Ball, July, 1979
Tuscaloosa County Historical
Preservation Authority, P. O. Box
1776, Tuscaloosa 35401

Looking east on Main Avenue at #7.

Photo number: 35/75

MAY 1 1980

FEB 29 1980



Northport Historic District
Northport, Alabama, Tuscaloosa
County

Greg Brough, September, 1979
Tuscaloosa County Historical
Preservation Authority, P. O. Box
1776, Tuscaloosa 35401

Looking north on Main Avenue from
in front of #5.

Photo number:

36/75

MAY 1

1980

FEB 29 1980



Northport Historic District
Northport, Alabama, Tuscaloosa
County

Ellen Mertins, July, 1979
Alabama Historical Commission

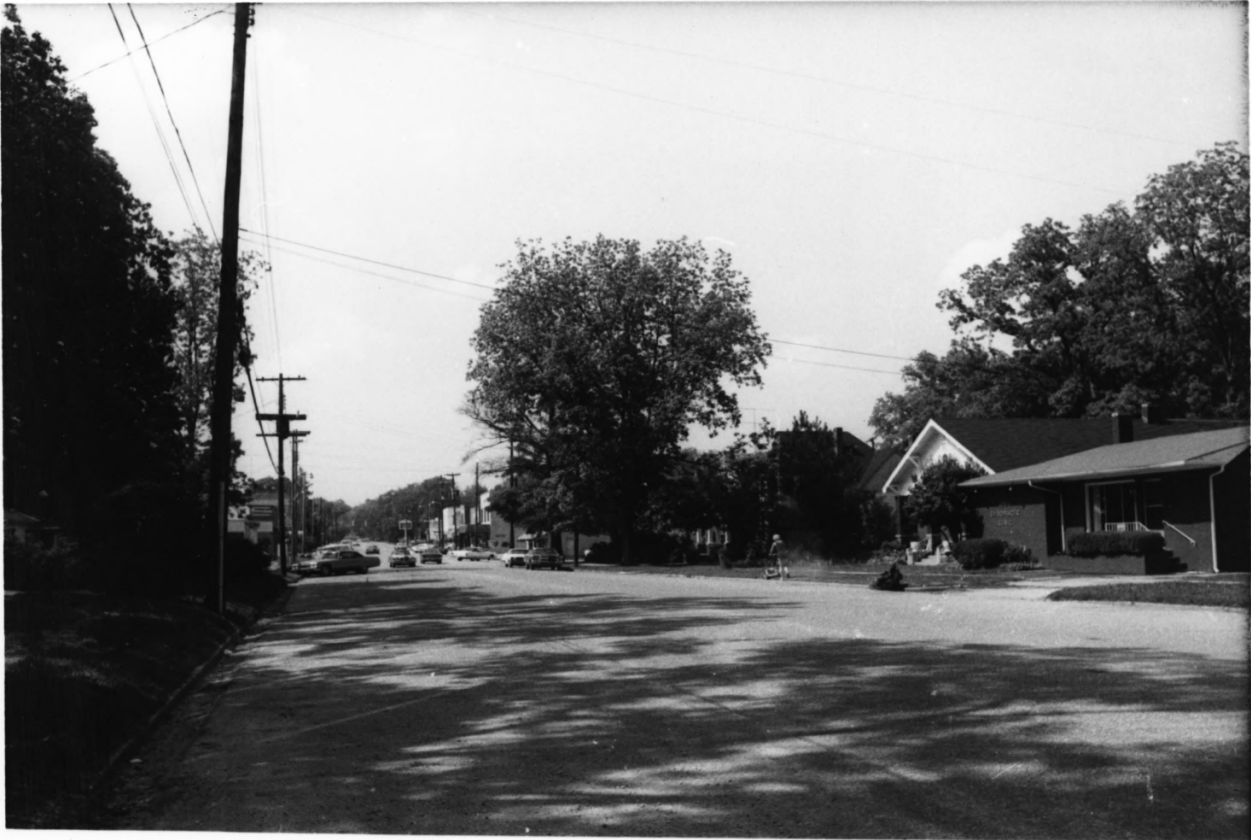
Looking north at west side of
Main Avenue left #6.

Photo number:

37/75

MAY 1 1980

FEB 29 1980



Northport Historic District
Northport, Alabama, Tuscaloosa
County

Ellen L. Mertins, July, 1979
Alabama Historical Commission

Looking north on Main Avenue from
in front of #3.

Photo number:

38

75

MAY 1

1980

FEB 29 1980



Northport Historic District
Northport, Alabama, Tuscaloosa
Alabama

Marie S. Ball, July, 1979
Tuscaloosa County Historical
Preservation Authority, P. O. Box
1776, Tuscaloosa 35401

Looking east on Main Avenue at #2.

Photo number: 39/75-

FEB 29 1980



Northport Historic District
Northport, Alabama, Tuscaloosa
County

Greg Brough, September, 1979
Tuscaloosa County Historical
Preservation Authority, P. O. Box
1776, Tuscaloosa 35401

Looking southwest on 4th Street
at #12.

Photo number: 40/75

FEB 29 1980



Northport Historic District
Northport, Alabama, Tuscaloosa
County

Greg Brough, September, 1979
Tuscaloosa County Historical
Preservation Authority, P. O. Box
1776, Tuscaloosa 35401

Looking east on 4th Street from
west of 22nd Avenue.

Photo number: 41/75

FEB 29 1980



Northport Historic District
Northport, Alabama, Tuscaloosa
County

Jackson R. Stell, September, 1979
Alabama Historical Commission

Looking southeast across 22nd Ave.
to the rear of from left #s 19,
18, 17 and 13.

Photo number: 42 / 175

FEB 29 1980



Northport Historic District
Northport, Alabama, Tuscaloosa
County

Jackson R. Stell, September, 1979
Alabama Historical Commission

Looking southeast across 5th Street
to 22nd Avenue and the rear of
from left #'s 29, 27 and 125.

Photo number: 43/75

FEB 29 1980



JOBSON
HOME
built about 1845
by George Garden

Northport Historic District
Northport, Alabama, Tuscaloosa
County

Marie S. Ball, July, 1979
Tuscaloosa County Historical
Preservation Authority, P. O. Box
1776, Tuscaloosa 35401

Looking south on 5th Street at
#55.

Photo number:

44/75-

FEB 29 1980



SPILLER

PROPERTY

Northport Historic District
Northport, Alabama, Tuscaloosa
County

Jackson R. Stell, September, 1979
Alabama Historical Commission

Looking east on 5th Street, left
rear of #30 and right #55.

Photo number: 45/75

FEB 29 1980



Northport Historic District
Northport, Alabama, Tuscaloosa
County

Greg Brough, September, 1979
Tuscaloosa County Historical
Preservation Authority
P. O. Box 1776
Tuscaloosa, Alabama 35401

Looking west on 5th Street at the
north side of the 2400 block.

Photo number:

46/75

FEB 29 1980



Northport Historic District
Northport, Alabama, Tuscaloosa
County

Greg Brough, September, 1979
Tuscaloosa County Historical
Preservation Authority
P. O. Box 1776
Tuscaloosa, Alabama 35401

Looking west on 5th Street at
north side of the 2400 block.

Photo number:

47/75

FEB 29 1980



Northport Historic District
Northport, Alabama, Tuscaloosa
County

Greg Brough, September, 1979
Tuscaloosa County Historical
Preservation Authority
P. O. Box 1776
Tuscaloosa, Alabama 35401

Looking north on 25th Avenue
from the intersection of 5th
Street.

Photo number: 48/75

FEB 29 1980



Northport Historic District
Northport, Alabama, Tuscaloosa
County

Greg Brough, September, 1979
Tuscaloosa County Historical
Preservation Authority
P. O. Box 1776
Tuscaloosa, Alabama 35401

Looking east from 5th Street at
#70.

Photo number:

49/75

FEB 29 1980



Northport Historic District
Northport, Alabama, Tuscaloosa
County

Greg Brough, September, 1979
Tuscaloosa County Historical
Preservation Authority
P. O. Box 1776
Tuscaloosa, Alabama 35401

Looking north on 26th Avenue
from 5th Street intersection.

Photo number:

50/75

FEB 29 1980



Northport Historic District
Northport, Alabama, Tuscaloosa
County

Marie S. Ball, July, 1979
Tuscaloosa County Historical
Preservation Authority
P. O. Box 1776
Tuscaloosa, Alabama 35401

On 5th Street looking west at
#75.

Photo number: 51/75

FEB 29 1980



Northport Historic District
Northport, Alabama, Tuscaloosa
County

Greg Brough, September, 1979
Tuscaloosa County Historical
Preservation Authority
P. O. Box 1776
Tuscaloosa, Alabama 35401

Looking east on 5th Street far
left is #76.

Photo number: 52/75

FEB 4 8 1980



Northport Historic District
Northport, Alabama, Tuscaloosa
County

Greg Brough, September, 1979
Tuscaloosa County Historical
Preservation Authority
P. O. Box 1776
Tuscaloosa, Alabama 35401

Looking northeast on 5th Street
from left #78 and 77.

Photo number: 53/75

FEB 29 1980



Northport Historic District
Northport, Alabama, Tuscaloosa
County

Greg Brough, September, 1979
Tuscaloosa County Historical
Preservation Authority
P. O. Box 1776
Tuscaloosa, Alabama 35401

Looking east down 7th Street,
from intersection of 30th Avenue
right #128.

Photo number: 54/75

FEB 29 1980



Northport Historic District
Northport, Alabama, Tuscaloosa
County

Greg Brough, September, 1979
Tuscaloosa County Historical
Preservation Authority
P. O. Box 1776
Tuscaloosa, Alabama 35401

Looking south on 30th Avenue,
from right #133, #130.

Photo number: 55/75-

FEB 29 1980



Northport Historic District
Northport, Alabama, Tuscaloosa
County

Greg Brough, September, 1979
Tuscaloosa County Historical
Preservation Authority
P. O. Box 1776
Tuscaloosa, Alabama 35401

Looking south on 30th Avenue,
from left #'s 135, 134, 132, etc.

Photo number: 56/75

FEB 29 1980



Northport Historic District
Northport, Alabama, Tuscaloosa
County

Greg Brough, September, 1979
Tuscaloosa County Historical
Preservation Authority
P. O. Box 1776
Tuscaloosa, Alabama 35401

Looking east from 30th Avenue
to #136

Photo number: 57/HS

FEB 29 1980



Northport Historic District
Northport, Alabama, Tuscaloosa
County

Greg Brough, September, 1979
Tuscaloosa County Historical
Preservation Authority
P. O. Box 1776
Tuscaloosa, Alabama 35401

Looking east on 7th Street to
the 28th Avenue intersection

Photo number: 58/75

FEB 29 1980



Northport Historic District
Northport, Alabama, Tuscaloosa
County

Greg Brough, September, 1979
Tuscaloosa County Historical
Preservation Authority
P. O. Box 1776
Tuscaloosa, Alabama 35401

Looking west on 7th Street, from
the intersection of 28th Avenue.

Photo number: 59/75

FEB 29 1980



Northport Historic District
Northport, Alabama, Tuscaloosa
County

Greg Brough, September, 1979
Tuscaloosa County Historical
Preservation Authority
P. O. Box 1776
Tuscaloosa, Alabama 35401

Looking west at the intersection
of 7th Street and 28th Avenue.

Photo number: 60/75

FEB 29 1980



Northport Historic District
Northport, Alabama, Tuscaloosa
County

Greg Brough, September, 1979
Tuscaloosa County Historical
Preservation Authority
P. O. Box 1776
Tuscaloosa, Alabama 35401

Intersection of 7th Street and
28th Avenue looking east.

Photo number: 61/75⁻

FEB 29 1980



Northport Historic District
Northport, Alabama, Tuscaloosa
County

Greg Brough, September, 1979
Tuscaloosa County Historical
Preservation Authority
P. O. Box 1776
Tuscaloosa, Alabama 35401

Looking east on 7th Street, from
the intersection of 28th Avenue.

Photo number: 62/75-

FEB 29 1980



Northport Historic District
Northport, Alabama, Tuscaloosa
County

Greg Brough, September, 1979
Tuscaloosa County Historical
Preservation Authority
P. O. Box 1776
Tuscaloosa, Alabama 35401

Intersection of 7th Street and
26th Avenue looking southwest
at #123.

Photo number: 63/75

FEB 29 1980



Northport Historic District
Northport, Alabama, Tuscaloosa
County

Greg Brough, September, 1979
Tuscaloosa County Historical
Preservation Authority
P. O. Box 1776
Tuscaloosa, Alabama 35401

Intersection of 26th Avenue and
7th Street at #122.

Photo number: 64/75

FEB 29 1980



Northport Historic District
Northport, Alabama, Tuscaloosa
County

Greg Brough, September, 1979
Tuscaloosa County Historical
Preservation Authority
P. O. Box 1776
Tuscaloosa, Alabama 35401

Looking south on 25th Avenue,
from right #113, #111, etc.

Photo number:

65/75

FEB 29 1980



Northport Historic District
Northport, Alabama, Tuscaloosa
County

Greg Brough, September, 1979
Tuscaloosa County Historical
Preservation Authority
P. O. Box 1776
Tuscaloosa, Alabama 35401

Looking south on 25th Avenue
from the intersection of 7th
Street.

Photo number:

66/75

FEB 29 1980



Northport Historic District
Northport, Alabama, Tuscaloosa
County

Greg Brough, September, 1979
Tuscaloosa County Historical
Preservation Authority
P. O. Box 1776
Tuscaloosa, Alabama 35401

Looking southeast on 25th Avenue,
from left #115 and #112.

Photo number: 67/75

FEB 29 1980



Northport Historic District
Northport, Alabama, Tuscaloosa
County

Greg Brough, September, 1979
Tuscaloosa County Historical
Preservation Authority
P. O. Box 1776
Tuscaloosa, Alabama 35401

Looking north on 25th Avenue
from the intersection of 7th
Street.

Photo number:

68/75

FEB 29 1980



Northport Historic District
Northport, Alabama, Tuscaloosa
County

Greg Brough, September, 1979
Tuscaloosa County Historical
Preservation Authority
P. O. Box 1776
Tuscaloosa, Alabama 35401

Intersection of 7th Street and
25th Avenue looking at #116.

Photo number: 69/75

FEB 29 1980



Northport Historic District
Northport, Alabama, Tuscaloosa
County

Greg Brough, September, 1979
Tuscaloosa County Historical
Preservation Authority
P. O. Box 1776
Tuscaloosa, Alabama 35401

Intersection of 25th Avenue and
7th Street looking southwest at
#114.

Photo number:

70/75

FEB 29 1980



Northport Historic District
Northport, Alabama, Tuscaloosa
County

Greg Brough, September, 1979
Tuscaloosa County Historical
Preservation Authority
P. O. Box 1776
Tuscaloosa, Alabama 35401

Looking southeast from intersec-
tion 25th Avenue and the
railroad tracks.

Photo number: 71/75

FEB 29 1980



Northport Historic District
Northport, Alabama, Tuscaloosa
County

Greg Brough, September, 1979
Tuscaloosa County Historical
Preservation Authority
P. O. Box 1776
Tuscaloosa, Alabama 35401

Looking northeast on 24th Avenue,
from left #'s 107, 106, 105.

Photo number: 72/95

FEB 29 1980



NorthPort Historic District
Northport, Alabama, Tuscaloosa
County

Marie S. Ball, July, 1979
Tuscaloosa County Historical
Preservation Authority
P. O. Box 1776
Tuscaloosa, Alabama 35401

Looking southwest from 7th Street
at #80.

Photo number: 73/75

FEB 29 1980



Northport Historic District
Northport, Alabama, Tuscaloosa
County

Greg Brough, September, 1979
Tuscaloosa County Historical
Preservation Authority
P. O. Box 1776
Tuscaloosa, Alabama 35401

Looking west on 9th Street from
in front of #93.

Photo number:

74/75

FEB 29 1980



Northport Historic District
Northport, Alabama, Tuscaloosa
County

Greg Brough, September, 1979
Tuscaloosa County Historical
Preservation Authority

P. O. Box 1776

Tuscaloosa, Alabama 35401

Looking south from 9th Street
at #92

Photo number:

75 / 75

FEB 29 1980