



① Streetscape: Clark St. from Broadway Ave. Looking E  
Albert Lea Commercial Historic District  
Freeborn Co., MN

014556 - 2

① Streetscape: Clark St. from Broadway Ave.  
Looking E

014556-2

Albert Lea Commercial Historic District  
Freeborn Co., Mn

Photographer: Ewings & Gales, Hess Roise & Co.

April 2003

Mn Historical Society, 345 Kellogg Blvd. W., St. Paul, Mn 55102



② Streetscape, Clark St. from Broadway Ave. Looking W  
Albert Lea Commercial Historic District  
Freeborn Co., Mn  
014556-23

② Streetscape: Clark St. from Broadway Ave. Looking W

Albert Lea Commercial Historic District

Freeborn Co., Mn

Photographer: Ewings & Gales, Hess Roise & Co.

April 2003

Mn Historical Society, 345 Kellogg Blvd. W., St. Paul, Mn  
55102



③ William St. from Broadway Ave. Looking E, Streetscape  
Albert Lea Commercial Historic District  
Freeborn Co., Mn  
014557-24A

③ William St. from Broadway Ave. Looking E. Streetscape  
Albert Lea Commercial Historic District  
Freeborn Co., Mn

Photographer: Ewings & Gales, Hess Roise & Co.

April 2003

Mn Historical Society, 345 Kellogg Blvd. W., St. Paul, Mn  
55102



④ Streetscape: William St. From Washington Ave. Looking E  
Albert Lea Commercial Historic District  
Freeborn Co., Mn  
014560-19

④ Streetscape: William St. from Washington  
Ave. Looking E

014560-19

Albert Lea Commercial Historic District  
Freeborn Co., MN

Photographer: Ewings & Gales, Hess Roise & Co.

Oct., 2003

MN Historical Society, 345 Kellogg Blvd. W., St. Paul, MN 55102





⑤ Johnson Laundry Company Building - proposed for exclusion from District, photo taken in 1986 before remodeling.

08020-2

⑤ Johnson Laundry Company Building  
proposed for exclusion from District  
photo taken in 1986 before remodeling

Albert Lea Commercial Historic District  
Freeborn Co., Mn

Photographer: Noreen Roberts

Mn Historical Society, 345 Kellogg Blvd. W., St. Paul, Mn 55102

Looking E



⑤ Johnson Laundry Company Building - proposed for exclusion from The District, photo taken after remodeling.

014557-23A

⑤ Johnson Laundry Company Building  
proposed for exclusion from the district

Photo taken after remodeling

Albert Lea Commercial Historic District

Freeborn Co., Mn

Photographer: Ewing St Gales, Hess Roise & Co.

Mn Historical Society, 345 Kellogg Blvd. W., St. Paul, Mn  
55102

LOOKING E



⑥ Streetscape: Clark St. from Elizabeth Looking W  
Albert Lea Commercial Historic District  
Freeborn Co., MN  
014560-24

⑥ Streetscape, Clark St. from Elizabeth

014560-24

Looking W

Albert Lea Commercial Historic District

Freeborn Co., MN

Photographer: Ewings & Gales, Hess Roise & Co.

Oct., 2003

MN Historical Society, 345 Kellogg Blvd. W., St. Paul, MN 55102



⑦ Streetscape, Newton Ave. From William St. Looking N  
Albert Lea Commercial Historic District  
Freeborn Co., MN  
014560-23

⑦ Streetscape: Newton Ave. from William St.  
Looking N

014560-23

Albert Lea Commercial Historic District  
Freeborn Co., Mn

Photographer: Ewings & Gales, Hess, Roise & Co.  
Oct., 2003

Mn Historical Society, 345 Kellogg Blvd. W., St. Paul, Mn 55102





⑧ Streetscape: Washington Ave. from Clark St. Looking S  
Albert Lea Commercial Historic District  
Freeborn Co., MN  
014560-20

⑧ Streetscape: Washington Ave. from Clark St. Looking S

014560-20

Albert Lea Commercial Historic District

Freeborn Co., Mn

Photographer: Ewings & Gales, Hess Roise & Co.

Oct., 2003

MN Historical Society, 345 Kellogg Blvd. W., St. Paul, MN 55102



⑨ Streetscape: Broadway Ave. from Main St. Looking S  
Albert Lea Commercial Historic District  
Freeborn Co., MN  
014560-15

⑨ Streetscape: Broadway Ave. from 014560-15  
Main St. Looking S  
Albert Lea Commercial Historic District  
Freeborn, Co., MN  
Photographer: Ewings & Gale S, Hess Roise & Co.  
April, 2003  
MN Historical Society, 345 Kellogg Blvd. W., St. Paul, MN 55102



⑩ Streetscape, Clark St. from Washington Ave. Looking E  
Albert Lea Commercial Historic District  
Freeborn Co., MN  
014560-9

⑩ Streetscape! Clark St. From  
Washington Ave. Looking E

014560-9

Albert Lea Commercial Historic District

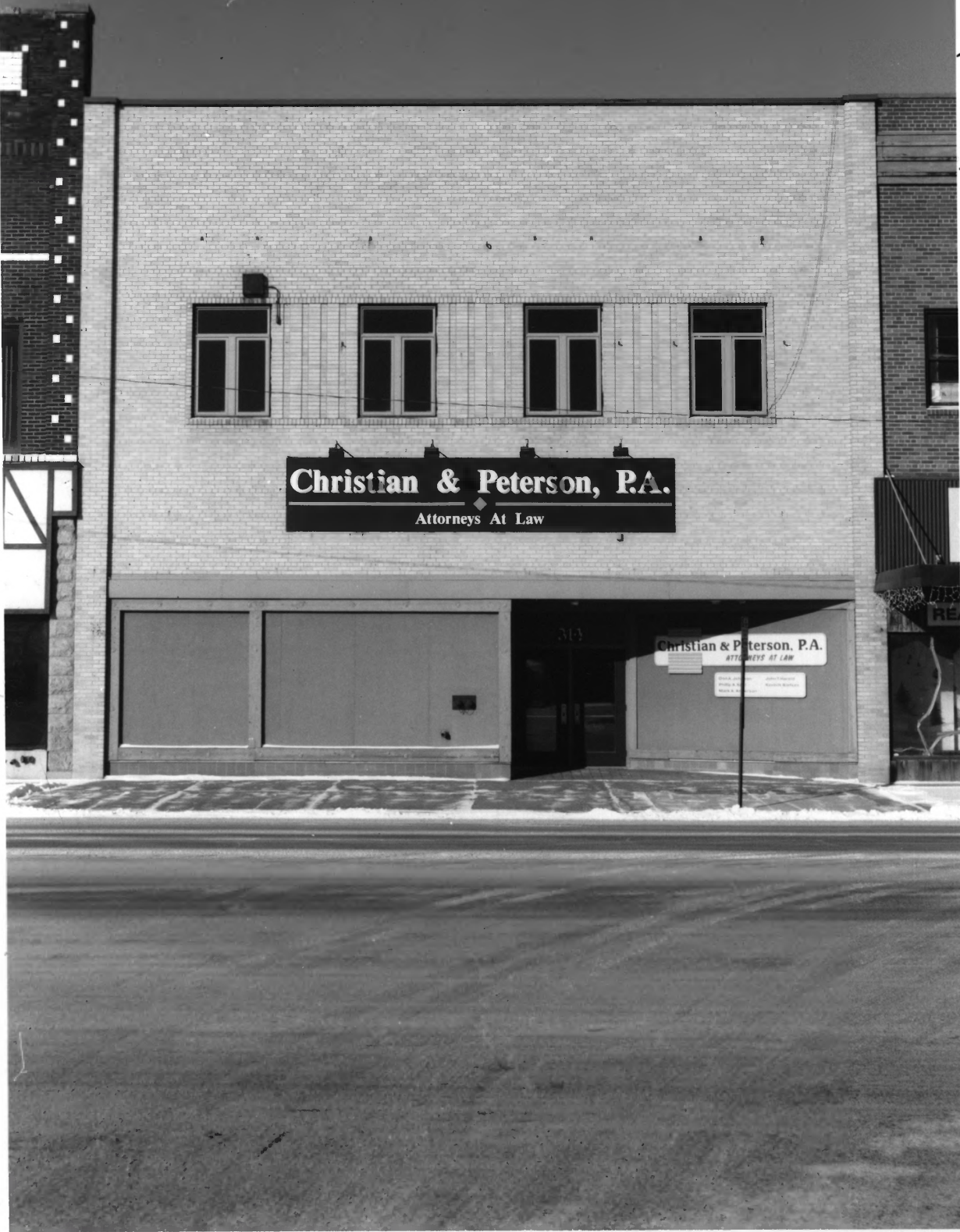
Freeborn Co., MN

Photographer! Ewings + Gates, Hess, Roise + Co.

April 2003

MN Historical Society, 345 Kellogg Blvd. W., St. Paul,

MN 55102



#2 Gulbrandson Hardware Company (non-Contributing)  
Albert Lea Commercial Historic District  
Freeborn Co., Mn  
014555-15

#2 Gulbrandson Hardware Company (non-contributing)  
314 S. Broadway Ave.  
Albert Lea Commercial Historic District  
Freeborn Co., MN  
Photographer: Ewings & Bates, Hess Roise & Co.  
April 2003  
MN Historical Society, 345 Kellogg Blvd. W., St. Paul, MN 55102  
Looking W

014555-15





#5 Broadway Theatre (Contributing)  
Albert Lea Commercial Historic District  
Freeborn Co., MN  
014555-11

#5 Broadway Theatre (contributing)  
336-346 S. Broadway Ave.

Albert Lea Commercial Historic District

Freeborn Co., Mn

Photographer: Ewings & Gates, Hess Poise & Co.

April 2003

Mn Historical Society, 345 Kellogg Blvd. W., St. Paul, Mn 55102

Looking NW



#6 Tribune Building; Morin Block (contributing)  
Albert Lea Commercial Historic District  
Freeborn Co., MN  
014560-16

# 6 Tribune Building; Merin Block (Contributing)

400-410 S. Broadway

Albert Lea Commercial Historic District

Freeborn Co., Mn

Photographer: Ewings & Bates, Hess Reize & Co.

October, 2002

Mn Historical Society, 345 Kellogg Blvd. W., St. Paul, MN 55102

Looking SW



#7 Commercial Building (Contributing)  
Albert Lea Commercial Historic District  
Freeborn Co., MN  
014557-20A

#7 Commercial Building (Contributing)

111-113 E. Clark St.

Albert Lea Commercial Historic District

Freeborn Co., MN

Photographer: Ewings & Gales, Hess Roise & Co.

April 2003

MN Historical Society, 345 Kellogg Blvd. W., St. Paul, MN 55102

Looking N



#9 Commercial Building (Contributing)  
Albert Lea Commercial Historic District  
Freeborn Co., MN  
014557-18A

#9 Commercial Building (Contributing)

119-123 E. Clark

Albert Lea Commercial Historic District

Freeborn Co., Mn

Photographer: Ewings & Gales, Hess Roise & Co.

April 2003

Mn Historical Society, 345 Kellogg Blvd. W., St. Paul, Mn 55102

Looking N





#13 Danish Brotherhood Society Lodge 75; Veterans of Foreign Wars Post 447 (Contributing)  
Albert Lea Commercial Historic District  
Freeborn Co., MN  
014557-15A

#13 Danish Brotherhood Society Lodge 75; Veterans of  
Foreign Wars Post 447

137 E. Clark St.

Albert Lea Commercial Historic District

Freeborn Co., MN

Photographer: Ewings & Gates, Hess Roise & Co.

April 2003

MN Historical Society, 345 Kellogg Blvd. W., St. Paul, MN 55102  
Looking NE



#21 + #22 Commercial Building (Contributing)  
Albert Lea Commercial Historic District  
Freeborn Co., MN  
014556-4

#21 + #22 Commercial Building (Contributing)  
130-140 W. Clark St.

Albert Lea Commercial Historic District  
Freeborn Co., MN

Photographer: Ewings + Gales, Hess Roise + Co.

April 2 003

MN Historical Society, 345 Kellogg Blvd. W., St. Paul, MN 55102  
Looking N



#23 First Federal Savings & Loan Association of Albert Lea (NON-contributing)  
Albert Lea Commercial Historic District  
Freeborn Co., Mn  
014556-10

#23 First Federal Savings & Loan Association of  
Albert Lea (Non-Contributing)

143 W. Clark St.

Albert Lea Commercial Historic District

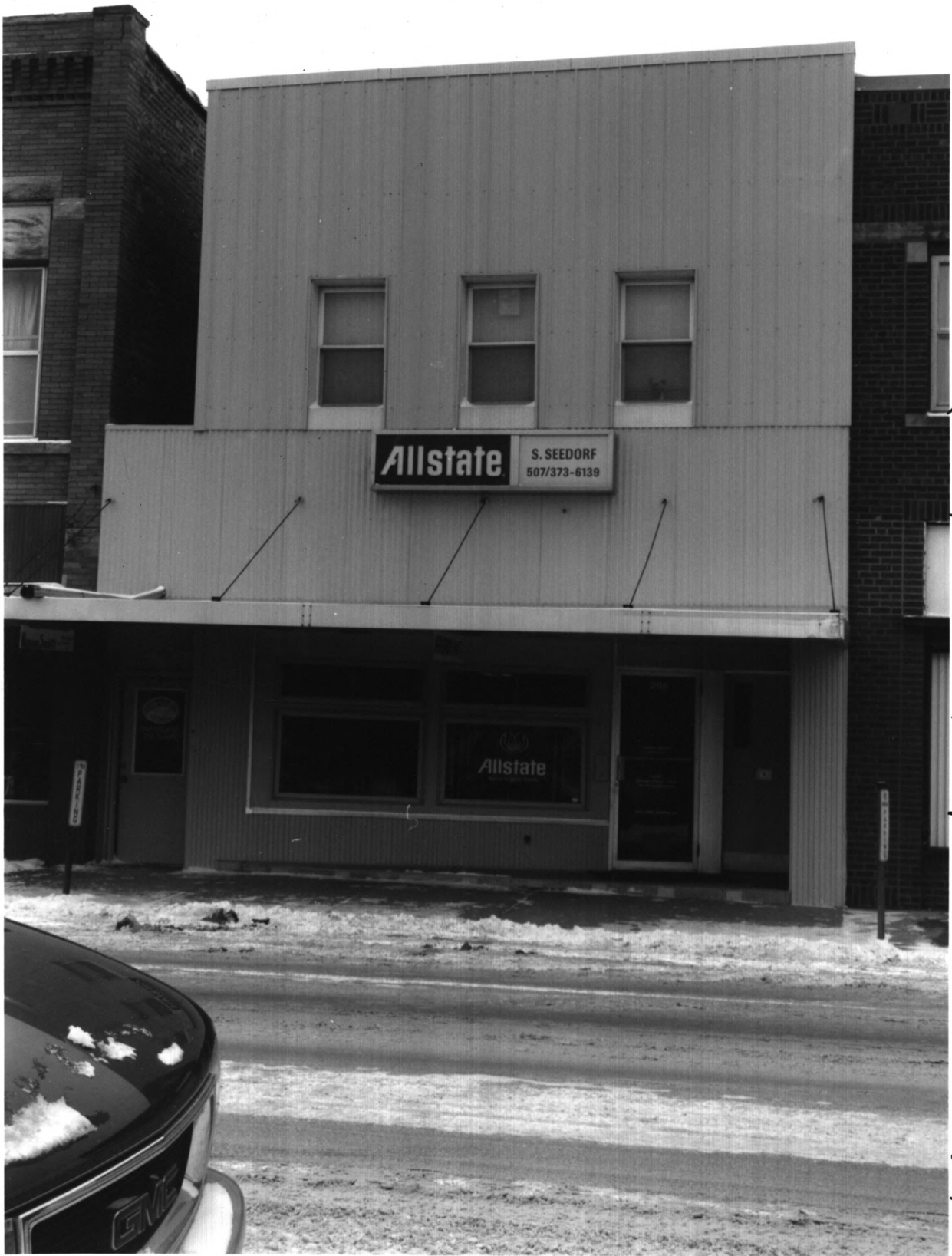
Freeborn Co., MN

Photographer: Ewings & Gates, Hess Roise & Co.

April 2003

MN Historical Society, 345 Kellogg Blvd. W., St. Paul, MN 55102

Looking SE



#26 Commercial Building (non-contributing)  
Albert Lea Commercial Historic District  
Freeborn Co., MN  
014556-7

#26 Commercial Building (non-contributing)

206 W. Clark St.

Albert Lea Commercial Historic District

Freeborn Co., MN

Photographer: Ewings & Gates, Hess Roise & Co.

April 2003

MN Historical Society, 345 Kellogg Blvd. W., St. Paul, MN 55102

Looking N





Minnesota Abstract & Title Company  
ABSTRACTING • RECORDS • CLOSING • TITLE INSURANCE • EGRESS & ENCLOSURES •

GOODMANSON  
LAW OFFICE  
115 W. COLLEGE  
Min. Abstract & Title Company  
WELCOMES YOU  
507-377-1111  
507-377-1111

115

MI

#29 Commercial Building (Contributing) District  
Albert Lea Commercial Historic

Freeborn Co., MN

014560-5

#29 Commercial Building (Contributing)

014560-5

115 W. College St.

Albert Lea Commercial Historic District

Freeborn Co., MN

Photographer: Ewings & Gales, Hess Roise & Co.

April 2003

Mn Historical Society, 345 Kellogg Blvd. W., St. Paul, MN 55102

Looking S



#31 Garage (Non-Contributing)  
Albert Lea Commercial Historic District  
Freeborn Co., Mn  
014555-20

#31 Garage (Non-Contributing)

014555-20

130 W. College St.

Albert Lea Commercial Historic District

Freeborn Co., Mn

Photographer: Ewings + Gales, Hess Roise + Co.

April 2003

Mn Historical Society, 345 Kellogg Blvd. W., St. Paul, Mn 55102

Looking N



#33 Albert Lea Public Library (contributing)  
Albert Lea Commercial Historic District  
Freeborn Co., Mn  
014555-19

#33 Albert Lea Public Library (Contributing)

014555-19

146 W. College St.

Albert Lea Commercial Historic District

Freeborn Co., MN

Photographer: Ewings & Gates, Hess Roise & Co.

April 2003

MN Historical Society, 345 Kellogg Blvd. W., St. Paul, MN 55102

Looking NE



#36 Commercial Building (Contributing)  
Albert Lea Commercial Historic District  
Freeborn Co., Mn  
014555-18

#36 Commercial Building (Contributing)

014555-18

132-136 W. Main St.

Albert Lea Commercial Historic District

Freeborn Co., Mn

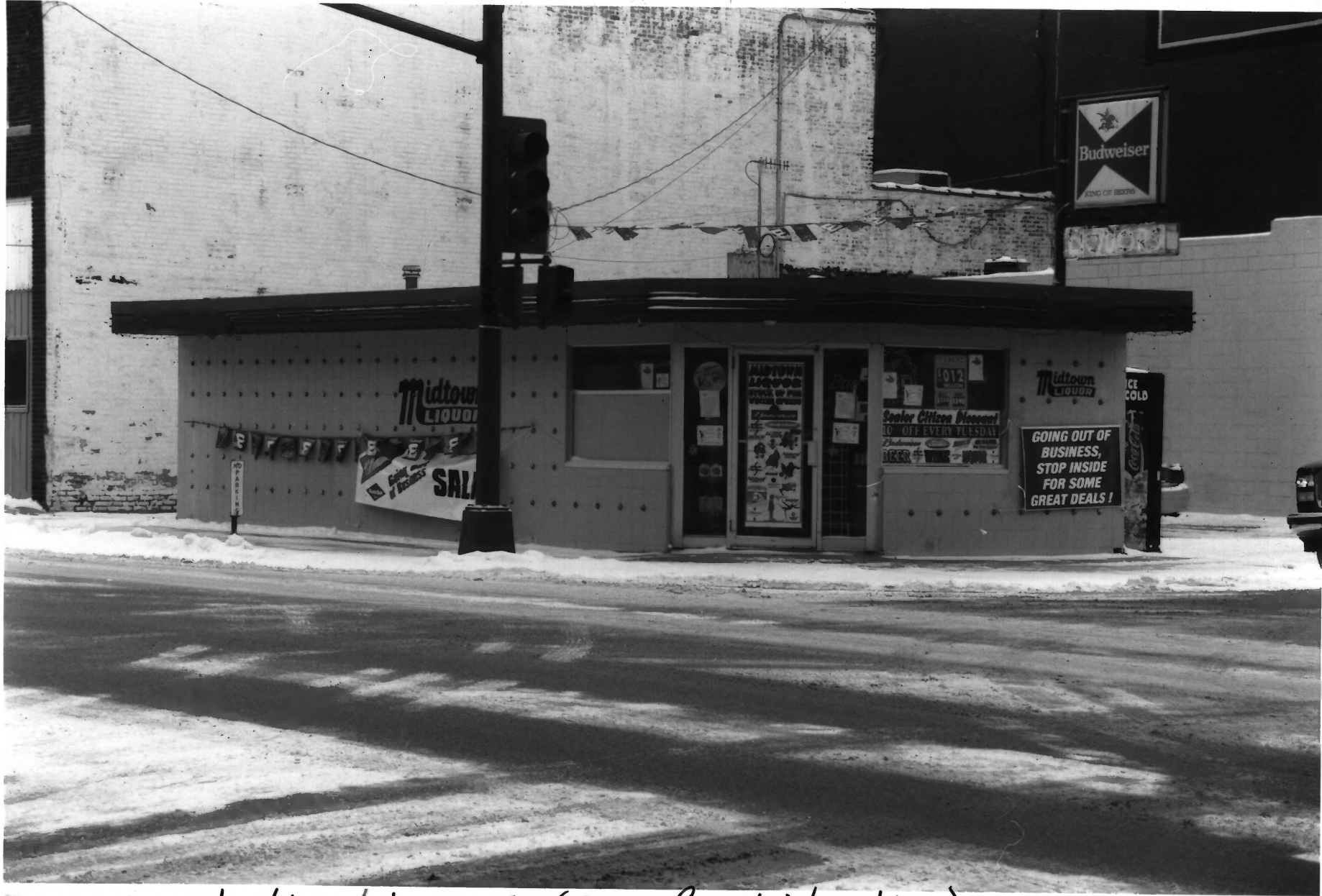
Photographer: Ewings & Gales, Hess Roise & Co.

April 2003

Mn Historical Society, 345 Kellogg Blvd. W., St. Paul, Mn 55102

Looking N





#40 Emstad's Liquors (non-contributing)  
Albert Lea Commercial Historic District  
Freeborn Co., MN  
014557-3A

#40 Emstad's Liquors (non-contributing)  
101 S. Newton Ave.

014557-3A

Albert Lea Commercial Historic District  
Freeborn Co., MN.

Photographer: Ewings + Bates, Hess Poise + Co.

April 2003

MN Historical Society, 345 Kellogg Blvd. W., St. Paul, MN 55102

Looking SE



#41 S.M. Severson, Blacksmith (non-contributing)  
Albert Lea Commercial Historic District  
Freeborn Co., Mn  
014557-4A

#41 S.M. Severson, Blacksmith (non-contributing)  
109 S. Newton Ave.

014557-4A

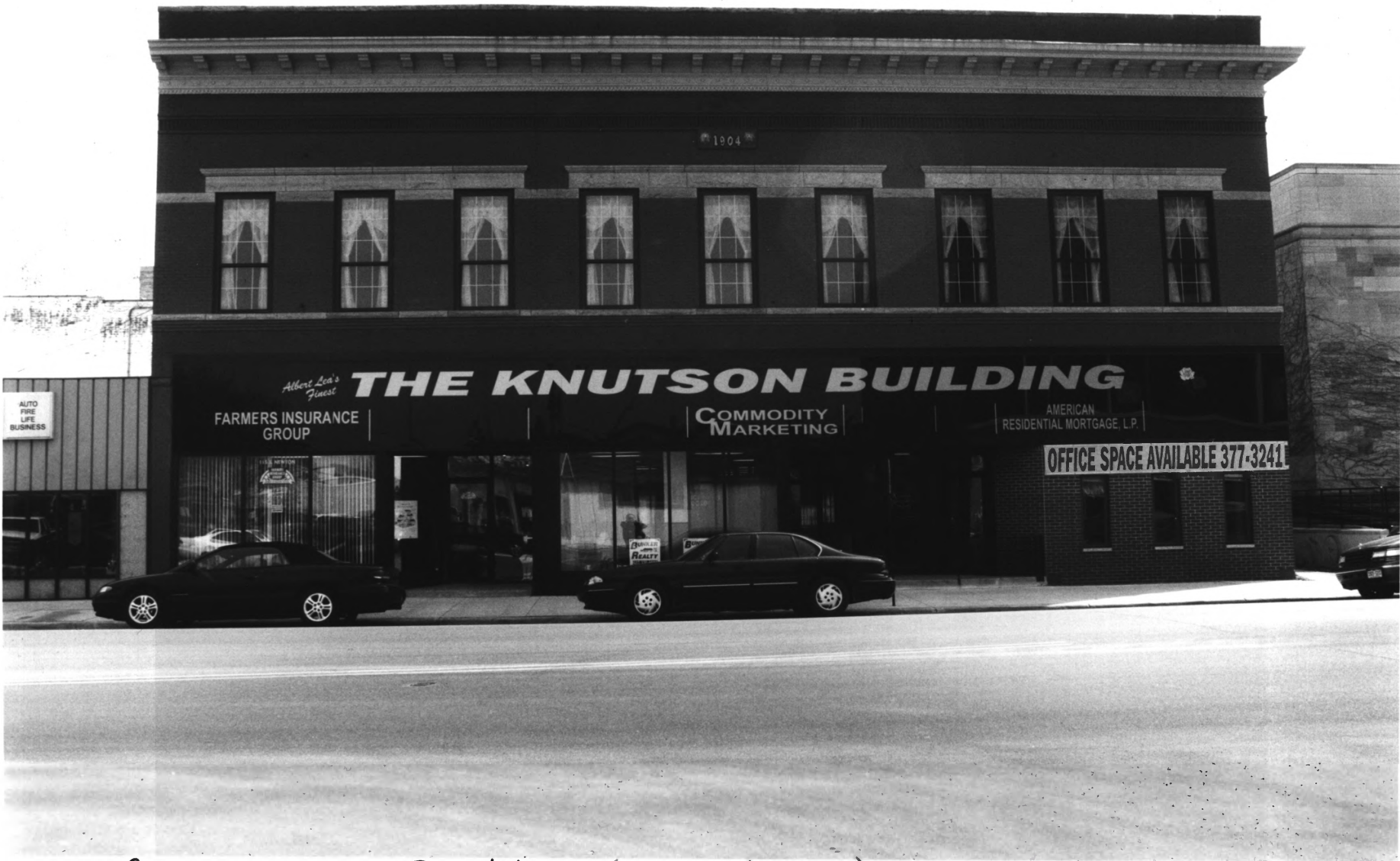
Albert Lea Commercial Historic District  
Freeborn Co., MN

Photographer: Ewings & Gates, Hess Roise & Co.

April 2003

MN Historical Society, 345 Kellogg Blvd. W., St. Paul, MN 55102

Looking E



#42 Commercial Building (Contributing)  
Albert Lea Commercial Historic District  
Freeborn Co., MN  
014560-22

#42 Commercial Building (Contributing)  
113-115 S. Newton Ave.

014560-22

Albert Lea Commercial Historic District  
Freeborn Co., Mn

Photographer: Ewings & Bates, Hess Roiser & Co.

April 2003

Mn Historical Society, 345 Kellogg Blvd. W., St. Paul, Mn 55102

Looking E



#44 United States Post Office (Contributing)  
Albert Lea Commercial Historic District  
Freeborn Co., MN  
014557-6A

#44 United States Post office

014557-6A

1415. Newton Ave.

Albert Lea Commercial Historic District

Freeborn Co., Mn

Photographers: Ewings + Gales, Hess Roise & Co.

April 2003

Mn Historical Society, 345 Kellogg Blvd. W., St. Paul, Mn  
55102

Looking NE





# 45 Knudsen Chevrolet Company (Contributing)  
Albert Lea Commercial Historic District  
Freeborn Co., MN  
014560-1

#45 Knudsen Chevrolet Company (contributing) 014560-1

110 W. Pearl St.

Albert Lea Commercial Historic District

Freeborn Co., MN

Photographers: Ewings & Gates, Hoise Roise & Co.

April 2003

MN Historical Society, 345 Kellogg Blvd. W., St. Paul, MN 55102

Looking NE



#46 Minnesota National Guard Armory (Contributing)  
Albert Lea Commercial Historic District  
Freeborn Co., MN  
014556-11

#46 Minnesota National Guard Armory (Contributing)  
104 S. Washington Ave.

014556-11

Albert Lea Commercial Historic District

Freeborn Co., MN

Photographer: Ewings & Gales, Hess Roise & Co.

April 2003

MN Historical Society, 345 Kellogg Blvd. W., St. Paul, MN 55102

Looking SE



#48 Commercial Building (contributing)  
Albert Lea Commercial Historic District  
Freeborn Co., MN  
014556-12

#48 Commercial Building (Contributing)  
116-118 S. Washington Ave.

814556-1

Albert Lea Commercial Historic District  
Freeborn Co., MN

Photographer: Ewings & Bates, Hess Roise & Co.  
April 2003

MN Historical Society, 345 Kellogg Blvd. W., St. Paul, MN 55102  
Looking W



#54 Washington Apartments (Contributing)  
Albert Lea Commercial Historic District  
Freeborn Co., MN  
014560-10

#54 Washington Apartments (contributing)

014560-10

209-221 S. Washington Ave.

Albert Lea Commercial Historic District

Freeborn Co., MN

Photographer: Ewings & Gales, Hess Roise & Co.

April 2003

MN Historical Society, 345 Kellogg Blvd. W., St. Paul, MN 55102

Looking E





#55 Commercial Building (Contributing)  
Albert Lea Commercial Historic District  
Freeborn Co., MN  
014555-24

#55 Commercial Building (containing)

014555-24

214 S. Washington Ave.

Albert Lea Commercial Historic District

Freeborn Co., MN

Photographer: Ewings & Gates, Hess Roise & Co.

April 2003

MN Historical Society, 345 Kellogg Blvd. W., St. Paul, MN 55102

Looking W



#58 Sears Roebuck and Company (Contributing)  
Albert Lea Commercial Historic District  
Freeborn Co., MN  
014 555-21

#58 Sears Roebuck and Company (Contributing)  
230-232 S. Washington Ave.

014555-21

Albert Lea Commercial Historic District  
Freeborn Co., Mn

Photographer! Ewings & Gates, Hess Roise & Co.

April 2003

Mn Historical Society, 345 Kellogg Blvd. W., St. Paul, Mn 55102

Looking w



#60 Hatteberg Building (Contributing)  
Albert Lea Commercial Historic District  
Freeborn Co., MN  
014557-21A

#60 Hatteberg Building (Contributing)

126-130 E. William St.

Albert Lea Commercial Historic District

Freeborn Co., MN

Photographer: Ewings & Gales, Hess Roise & Co.

April 2003

MN Historical Society, 345 Kellogg Blvd. W., St. Paul, MN 55102

Looking S



#61 HOME IMPROVEMENT BUILDING

135-141 EAST WILLIAM ST.

ALBERT LEA COMMERCIAL HISTORIC DISTRICT

FREEBORN CO., MN

PHOTOGRAPHER: EWINGS & GALES, HESS ROISE & CO.

APRIL 2003

HESS ROISE & CO., 100 N. 1<sup>ST</sup> ST., MINNEAPOLIS, MN 55401

LOOKING NORTH, NORTH WEST





#64 Hellie Apartments (Contributing)  
Albert Lea Commercial Historic District  
Freeborn Co., Mn  
014556-21

#64 Hellie Apartments (contributing)

014556-21

133 W. William St.

Albert Lea Commercial Historic District

Freeborn Co., MN

Photographer: Ewings & Gales, Hess Roisen Co.

April 2003

MN Historical Society, 345 Kellogg Blvd. W., St. Paul, MN 55102

Looking S

#65 Commercial Building (cont. buting)  
Albert Lea Commercial Historic District  
Freeborn Co., MN  
014556-18



#65 Commercial Building (Contributing)

134 W. William St.

Albert Lea Commercial Historic District

Freeborn Co., MN

Photographer: Ewings & Gales, Hess Roise & Co.

April, 2003

MN Historical Society, 345 Kellogg Blvd. W., St. Paul, MN 55102

Looking N