

United States Department of the Interior
National Park Service

National Register of Historic Places
Continuation Sheet

Section number _____ Page _____

SUPPLEMENTARY LISTING RECORD

NRIS Reference Number: 89002185

Date Listed: 1/4/90

Doniphan County Waddell
Property Name

Doniphan
County

KS
State

Metal Truss Bridges in Kansas 1861--1939 MPS
Multiple Name

This property is listed in the National Register of Historic Places in accordance with the attached nomination documentation subject to the following exceptions, exclusions, or amendments, notwithstanding the National Park Service certification included in the nomination documentation.

Beth Boland

Signature of the Keeper

1/4/90

Date of Action

=====

Amended Items in Nomination:

Item #7, Description: Materials include 1) Metal: wrought iron or steel; and 2) Wood.

Item #8, Significance: The applicable area of significance is engineering only.

DISTRIBUTION:

- National Register property file
- Nominating Authority (without nomination attachment)

United States Department of the Interior
National Park Service

2185

National Register of Historic Places
Registration Form

NOV 28 1989

This form is for use in nominating or requesting determinations of eligibility for individual properties or districts. See instructions in *Guidelines for Completing National Register Forms* (National Register Bulletin 16). Complete each item by marking "x" in the appropriate box or by entering the requested information. If an item does not apply to the property being documented, enter "N/A" for "not applicable." For functions, styles, materials, and areas of significance, enter only the categories and subcategories listed in the instructions. For additional space use continuation sheets (Form 10-900a). Type all entries.

1. Name of Property

historic name Doniphan County Waddell
other names/site number Doniphan County Waddell

2. Location

street & number 1.7 miles northeast of Doniphan on F.A.S. 28 not for publication
city, town Doniphan vicinity
state Kansas code KS county Doniphan code 43 zip code none

3. Classification

Ownership of Property	Category of Property	Number of Resources within Property	
<input type="checkbox"/> private	<input type="checkbox"/> building(s)	Contributing	Noncontributing
<input checked="" type="checkbox"/> public-local	<input type="checkbox"/> district	_____	_____ buildings
<input type="checkbox"/> public-State	<input type="checkbox"/> site	_____	_____ sites
<input type="checkbox"/> public-Federal	<input checked="" type="checkbox"/> structure	<u>1</u>	_____ structures
	<input type="checkbox"/> object	_____	_____ objects
		<u>1</u>	_____ Total

Name of related multiple property listing:
Metal Truss Bridges in Kansas

Number of contributing resources previously listed in the National Register 0

4. State/Federal Agency Certification

As the designated authority under the National Historic Preservation Act of 1966, as amended, I hereby certify that this nomination request for determination of eligibility meets the documentation standards for registering properties in the National Register of Historic Places and meets the procedural and professional requirements set forth in 36 CFR Part 60. In my opinion, the property meets does not meet the National Register criteria. See continuation sheet.

Ramon Powers Nov. 16, 1989
Signature of certifying official Date
State or Federal agency and bureau _____

In my opinion, the property meets does not meet the National Register criteria. See continuation sheet.

Signature of commenting or other official Date
State or Federal agency and bureau _____

5. National Park Service Certification

I, hereby, certify that this property is:

- entered in the National Register. See continuation sheet.
- determined eligible for the National Register. See continuation sheet.
- determined not eligible for the National Register.
- removed from the National Register.
- other, (explain:) _____

Beth Boland 1/4/90

Signature of the Keeper Date of Action

6. Function or Use

Historic Functions (enter categories from instructions)

Current Functions (enter categories from instructions)

Transportation: Road Related (Vehicular) Bridge

Transportation: Road Related (Vehicular): Bridge

7. Description

Architectural Classification
(enter categories from instructions)

Materials (enter categories from instructions)

Other: Waddell "A" Truss

foundation _____
walls _____

roof _____
other Metal: Wrought Iron or Steel

Describe present and historic physical appearance.

The Doniphan County Waddell "A" truss, erected in ca. 1900, is a rivited pony truss. The single span is 36 feet long and 20 feet wide. The deck rises 14 feet above the stream bed.

The members of a truss bridge are designated either as chord members or web members. Chord members are those mainly defining the outlines of the structure and they are termed lower or upper chord members depending on whether they are found at the bottom or the top of the structure. Members between the chords are web members. They are called posts or ties if they sustain compression or tension respectively.

In the King Post truss, the end posts and top chord merge to form two sides, and the lower chord completes the triangle. The end post and top chord sides are in compression while the lower chord side is in tension. If diagonals and secondary verticals are added to the king post, it becomes a Waddell "A" truss. The secondary verticals are placed in tension and the diagonals act in compression. The Doniphan county bridge is fabricated out of channel stock. Connections are facilitated by the use of metal plates at connection points. All connections are rivited. The top chords, king post, diagonals and secondary verticals are made up of these channel beams. The bottom chord is single. One floor beam is attached to the king post and the sway brace. This in turn supports an I beam running the length of the panel. The wood decking is laid diagonally on top of these I beams. Few alterations have taken place and the bridge retains a high degree of its structural integrity.

8. Statement of Significance

Certifying official has considered the significance of this property in relation to other properties:

nationally statewide locally

Applicable National Register Criteria A B C D

Criteria Considerations (Exceptions) A B C D E F G

Areas of Significance (enter categories from instructions)

Engineering

Transportation

Period of Significance

Ca. 1900

Ca. 1900

Significant Dates

Ca. 1900

Ca. 1900

Cultural Affiliation

n/a

Significant Person

n/a

Architect/Builder

Unknown

State significance of property, and justify criteria, criteria considerations, and areas and periods of significance noted above.

The King Post is one of the oldest truss designs, serving well in many medieval buildings. As is evident they served as well as bridges into the 20th century. Its simplicity also establishes its limit. As the length increases so must the height, at the same ratio. It is therefore only practical in short spans. This was compensated somewhat by the development of a Waddell "A" Truss in the late 19th and early 20th century. The length of a Waddell could reach up to 75 feet.

No actual construction history of the Doniphan County Waddell "A" Truss has presently been located. Such structures were generally quite inexpensive and received little public notice. It was selected to be nominated because it is the only remaining example of the design in Kansas and it retains an outstanding degree of its integrity.

See continuation sheet

9. Major Bibliographical References

Victor C. Darnell, American Bridge Building Companies, Washington, DC: Society for Industrial Archeology Occasional Publication 4, 1984.

David Weitzman, Traces of the Past: A Field Guide to Industrial Archeology, New York: Charles Schribner's Sons, 1980.

James L. Cooper, Iron Monuments to Distant Posterity, DePauw University, F.H.W.A., Indiana Dept. of Highways, Indiana Dept. Natural Resources, N.P.S., 1987.

Dan G. Deibler, A Survey and Photographic Inventory of Metal Truss Bridges in Virginia, Charlottesville: Virginia Highway & Transportation Research Council, 1975.

See continuation sheet

Previous documentation on file (NPS):

- preliminary determination of individual listing (36 CFR 67) has been requested
- previously listed in the National Register
- previously determined eligible by the National Register
- designated a National Historic Landmark
- recorded by Historic American Buildings Survey # _____
- recorded by Historic American Engineering Record # _____

Primary location of additional data:

- State historic preservation office
- Other State agency
- Federal agency
- Local government
- University
- Other

Specify repository:
KS State Historical Society

10. Geographical Data

Acreage of property less than one acre

UTM References

A
 Zone Easting Northing

C

B
 Zone Easting Northing

D

See continuation sheet

Verbal Boundary Description

The nominated property is located on the NW 1/4, SW 1/4, NE 1/4, SW 1/4, section 3, township 5 south, range 21 east, on a tract measuring 36' x 20' whose northeast corner is represented by the northeast corner of the bridge. Beginning at the northeast corner the boundary proceeds 26' southwest, 20' northwest, 36' northeast and 16' southeast to the point of beginning.

See continuation sheet

Boundary Justification

The boundary includes only that area that is historically associated with the nominated property.

See continuation sheet

11. Form Prepared By

name/title Larry Jochims

organization Kansas State Historical Society date September 20, 1989

street & number 120 W. 10th telephone (913) 296-3251

city or town Topeka state KS zip code 66612

United States Department of the Interior
National Park Service

11/28/89

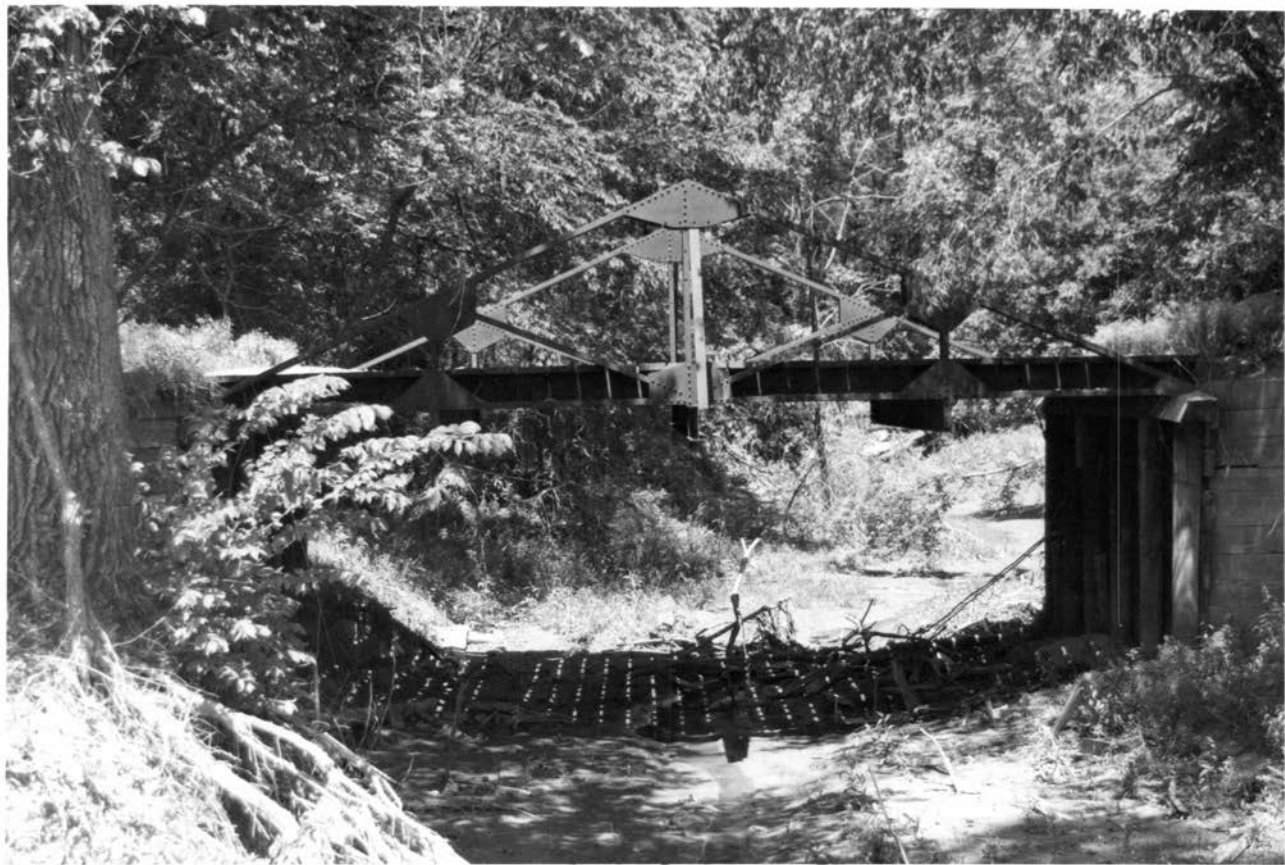
National Register of Historic Places
Continuation Sheet

Section number _____ Page _____

Metal Truss Bridges in Kansas 1861--1939 MPS
Anderson County, et al. KANSAS

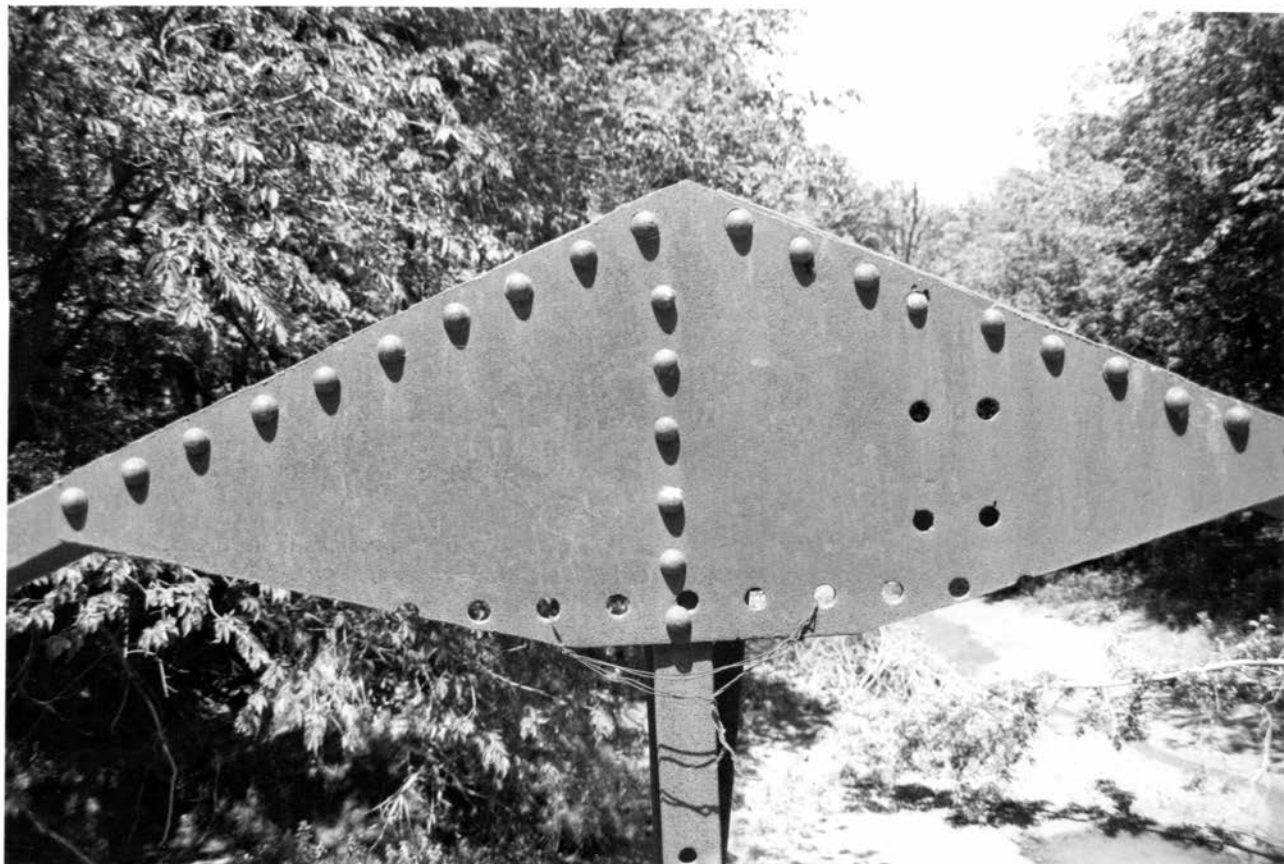
Date Listed

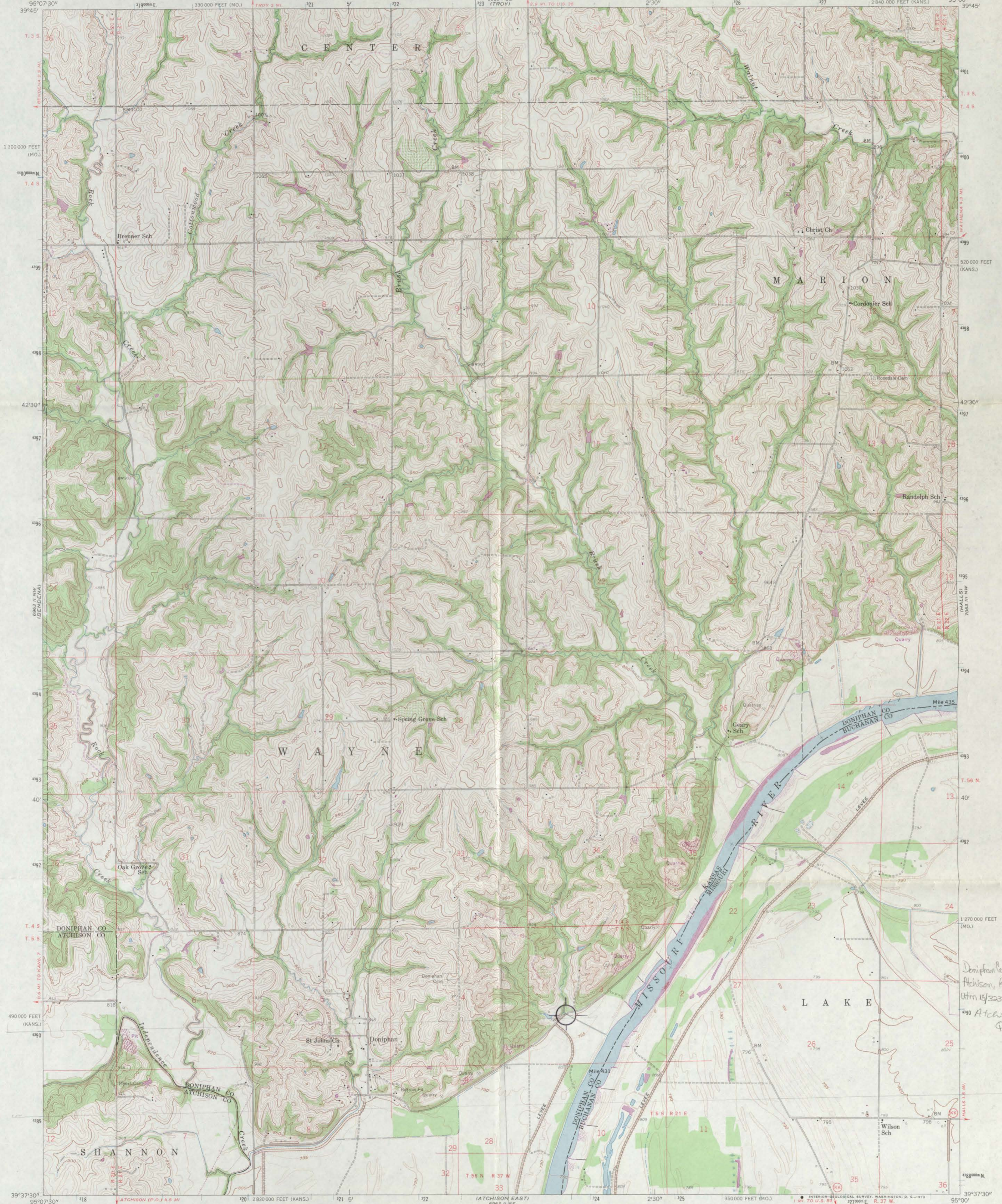
- | | |
|---|--------|
| COVER Substantive Review | 1/4/90 |
| 1. Onion Creek Bridge Substantive Review | 2/4/90 |
| 2. Pott's Ford Bridge Substantive Review | 1/4/90 |
| 3. Little Walnut Creek Bowstring Substantive Review | 1/4/90 |
| 4. Riley Creek Bridge Substantive Review | 1/4/90 |
| 5. East Riley Creek Bridge Substantive Review | 1/4/90 |
| 6. Spence's Crossing Bridge Substantive Review | 1/4/90 |
| 7. Walnut Creek Bridge Substantive Review | 1/4/90 |
| 8. Carey's Ford Bridge Substantive Review | 1/4/90 |
| 9. Independence Bowstring Substantive Review | 1/4/90 |
| 10. Four Mile Creek Lattice Substantive Review | 1/4/90 |
| 11. Long Shoals Bridge Substantive Review | 1/4/90 |
| 12. Meriden Rock Creek Bridge Substantive Review | Ret. |
| 13. Washington County Kingpost Substantive Review | 1/4/90 |
| 14. Doniphan County Waddell Substantive Review | 1/4/90 |
| 15. Jefferson KANNEY Old Town Bowstring Truss Substantive Review | 1/4/90 |
| 16. Asylum Bridge Substantive Review | 1/4/90 |
| 17. Jack Creek Kingpost Substantive Review | 1/4/90 |
| 18. Otter Creek Bridge Substantive Review | 1/4/90 |
| 19. Republican River Pegram Truss Substantive Review | 1/4/90 |
| 20. West Sappa Creek Lattice Substantive Review | 1/4/90 |
| 21. County Line Bowstring Substantive Review | 1/4/90 |
| 22. Tauy Creek Bridge | |
| 23. Elk Falls Pratt Truss Bridge | 5/6/94 |



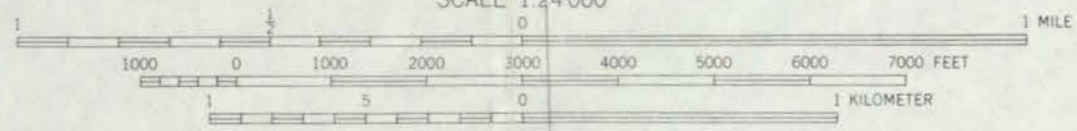
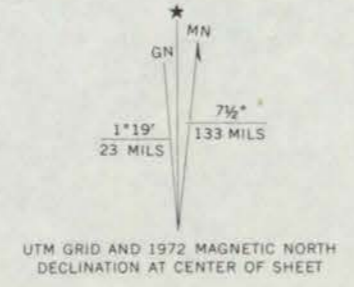






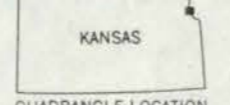


Mapped, edited, and published by the Geological Survey
Control by USGS and USC&GS
Topography from aerial photographs by photogrammetric methods
and by planetable surveys 1959. Aerial photographs taken 1957
Polyconic projection. 1927 North American datum
10,000-foot grids based on Kansas coordinate system, north zone,
and Missouri coordinate system, west zone
1000-meter Universal Transverse Mercator grid ticks,
zone 15, shown in blue
Revisions shown in purple compiled from aerial photographs
taken 1972. This information not field checked



CONTOUR INTERVAL 10 FEET
DOTTED LINES REPRESENT 5-FOOT CONTOURS
DATUM IS MEAN SEA LEVEL

THIS MAP COMPLIES WITH NATIONAL MAP ACCURACY STANDARDS
FOR SALE BY U.S. GEOLOGICAL SURVEY, DENVER, COLORADO 80225, OR WASHINGTON, D. C. 20242,
STATE GEOLOGICAL SURVEY, LAWRENCE, KANSAS 66044
AND MISSOURI GEOLOGICAL SURVEY, ROLLA, MISSOURI 65401
A FOLDER DESCRIBING TOPOGRAPHIC MAPS AND SYMBOLS IS AVAILABLE ON REQUEST



ROAD CLASSIFICATION
Light-duty ——— Unimproved dirt - - - - -
State Route ○

ATCHISON NE, KANS.—MO.
NE/4 ATCHISON 15' QUADRANGLE
N 3937.5—W 9500/7.5

1959
PHOTOREVISED 1972
AMS 6963 II NE—SERIES V878

Doniphan County Workcell
Atchison, Kansas
Utm 15/323740/439040
Atchison Quad

National Register of Historic Places

Note to the record

Additional Documentation: 2013

UNITED STATES DEPARTMENT OF THE INTERIOR
NATIONAL PARK SERVICE

NATIONAL REGISTER OF HISTORIC PLACES
EVALUATION/RETURN SHEET

REQUESTED ACTION: PROPOSED MOVE

PROPERTY Doniphan County Waddell
NAME:

MULTIPLE Metal Truss Bridges in Kansas 1861--1939 MPS
NAME:

STATE & COUNTY: KANSAS, Doniphan

DATE RECEIVED: 5/10/13 DATE OF PENDING LIST:
DATE OF 16TH DAY: DATE OF 45TH DAY: 6/26/13
DATE OF WEEKLY LIST:

REFERENCE NUMBER: 89002185

NOMINATOR: STATE

REASONS FOR REVIEW:

APPEAL: N DATA PROBLEM: N LANDSCAPE: N LESS THAN 50 YEARS: N
OTHER: N PDIL: N PERIOD: N PROGRAM UNAPPROVED: N
REQUEST: Y SAMPLE: N SLR DRAFT: N NATIONAL: N

COMMENT WAIVER: N

ACCEPT RETURN REJECT 6/26/13 DATE

ABSTRACT/SUMMARY COMMENTS:

Proposed move accepted

RECOM./CRITERIA C

REVIEWER Abernathy

DISCIPLINE Architectural Historian

TELEPHONE _____

DATE 6/26/13

DOCUMENTATION see attached comments Y/N see attached SLR Y/N

If a nomination is returned to the nominating authority, the nomination is no longer under consideration by the NPS.



United States Department of the Interior
National Park Service

National Register of Historic Places
Continuation Sheet

Section number _____ Page _____

Relocation Request

Doniphan County, which owns and maintains the bridge, is requesting approval to move the Waddell Truss Bridge (NR listed 01/04/1990) from its current location spanning a small creek on Monument Road (FAS 28) 1.7 miles northeast of Doniphan to the Troy City Park (408 W Myrtle Street).

Constructed circa 1900, this Waddell Truss bridge spans 36 feet long, 20 feet wide, and the deck of the bridge rises 14 feet above the stream bed. The bridge is in fair condition and retains a high degree of integrity. It is unique in that it is the only known extant Waddell "A" Truss bridge in Kansas. The development of the Waddell "A" Truss in the late 19th and early 20th centuries allowed for spans of up to 75 feet compared to the King Post utilized before it, which could only span short distances. The bridge was nominated to the National Register in 1990 for its engineering significance.

It currently carries light traffic across the stream and is scheduled to be replaced by a modern bridge.

Relocation Plan

The Doniphan County Waddell Truss Bridge will be moved to make way for a modern bridge. Doniphan County plans to give the bridge to the City of Troy for pedestrian use in the city's park. The loss of integrity will be almost exclusively to the environs. The new location will provide a similar orientation of the bridge over a small creek.

The County proposes to move the bridge approximately 13 miles north to span a creek within the Troy City Park in Troy, Doniphan County, Kansas. At the new location, the bridge will span a small creek of a similar size and depth as the one it currently spans.

The County will contract with a professional contractor to complete minimal disassembly and relocation to the city park. The contractor has proposed to remove the wood deck and stringers, unbolt and remove sway braces, unbolt and remove floor beams and A-frame trusses, and place on a flatbed trailer for relocation. Doniphan County will be responsible for the relocation of the bridge, and the City of Troy will be responsible for preparing the new bridge site and reassembly.

Criteria Consideration B – Moved Properties

The Doniphan County Waddell Truss Bridge was listed in the National Register of Historic Places in 1990 as part of the "Metal Truss Bridges in Kansas" multiple property listing. It was listed under Criterion C for its design and construction significance. Should the relocation plan be completed as proposed, the bridge will remain eligible for listing in the National Register and retain its statewide significance and the association with the multiple property nomination at its new location.

The proposed new location for the Doniphan County Waddell Truss Bridge meets the requirements of Criteria Consideration B. Under Criterion C, all of the significant physical features will be retained including its metal frame, with the exception of the footings. Key features that illustrate the construction technology and materials that occurred during the period of significance will be retained.

United States Department of the Interior
National Park Service

National Register of Historic Places
Continuation Sheet

Doniphan County Waddell Truss Bridge
Doniphan County, Kansas

Section number _____ Page _____

Archeological Review of Proposed Site

The Kansas State Historic Preservation Office reviewed its cultural resource files for the area proposed for relocation of the Doniphan County Waddell Truss Bridge in accordance with 36 CFR 800. The proposed relocation was reviewed to have no effect on properties listed in the National Register of Historic Places or otherwise identified in our files. This office had no objection to the implementation of the project.

Location Information

Existing Location - Lat/Long Coordinates: 39.64383 -95.05384

Proposed Location - Lat/Long Coordinates: 39.78830 -95.09479

Photographs

Photographer: Sarah Martin
Date: May 27, 2009

Image 1: Bridge in original location

Photographer: Pat Dill
Date: April 19, 2013

Image 2: Proposed Location in Troy City Park



Patrick Zollner / Deputy SHPO

5-7-13

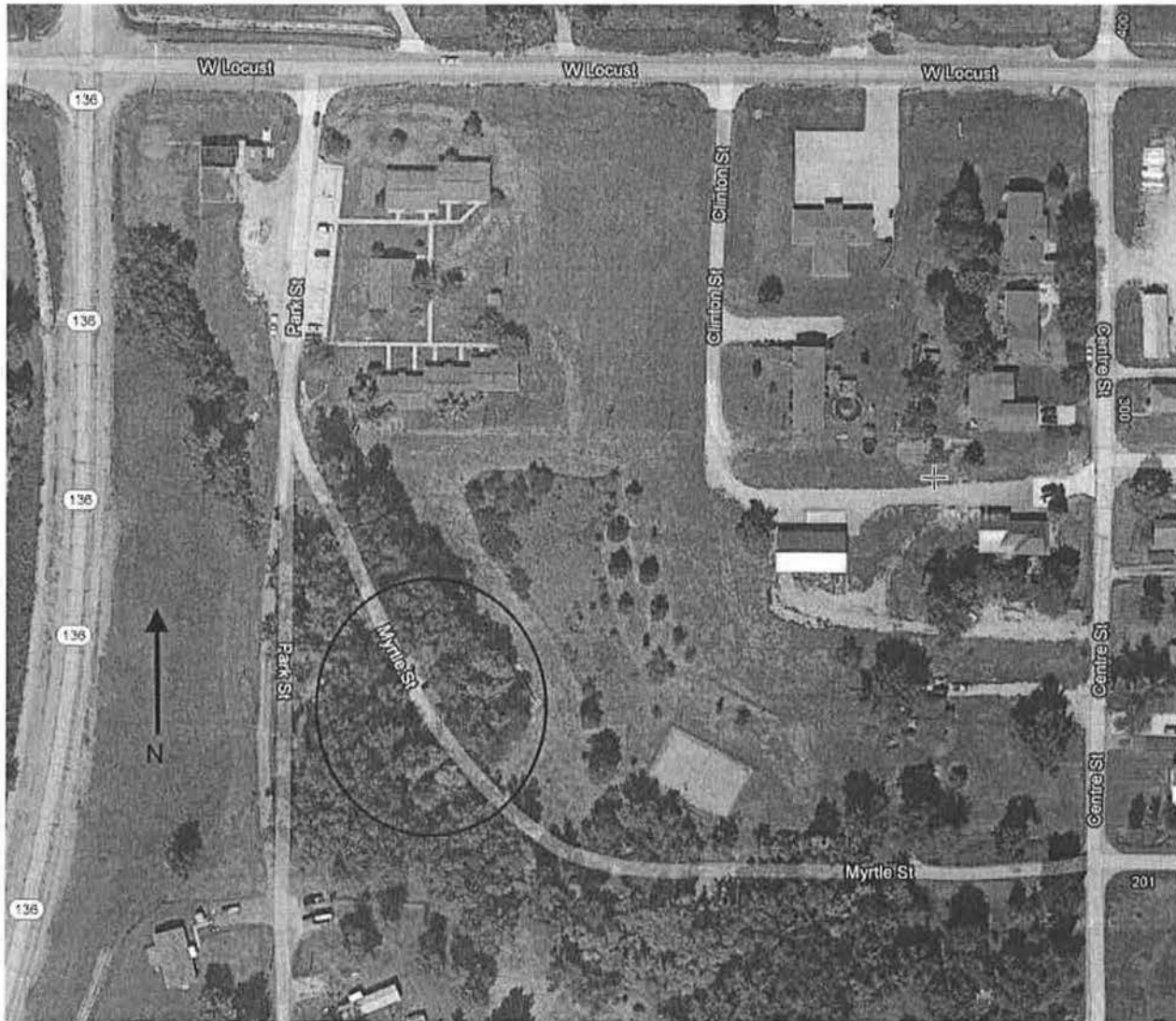
Date

**United States Department of the Interior
National Park Service**

**National Register of Historic Places
Continuation Sheet**

Doniphan County Waddell Truss Bridge
Doniphan County, Kansas

Section number _____ Page _____



Aerial Image of Proposed Location (Google.com)
Troy City Park, Troy, Doniphan County, KS
Lat/Long. Coordinates: 39.78830 -95.09479
Datum: WGS84





04/19/2013

National Register of Historic Places

Note to the record

Additional Documentation: 2016

UNITED STATES DEPARTMENT OF THE INTERIOR
NATIONAL PARK SERVICE

NATIONAL REGISTER OF HISTORIC PLACES
EVALUATION/RETURN SHEET

REQUESTED ACTION: ADDITIONAL DOCUMENTATION

PROPERTY Doniphan County Waddell Truss Bridge
NAME:

MULTIPLE Metal Truss Bridges in Kansas 1861--1939 MPS
NAME:

STATE & COUNTY: KANSAS, Doniphan

DATE RECEIVED: 5/13/16 DATE OF PENDING LIST:
DATE OF 16TH DAY: DATE OF 45TH DAY: 6/28/16
DATE OF WEEKLY LIST:

REFERENCE NUMBER: 89002185

NOMINATOR: STATE

REASONS FOR REVIEW:

APPEAL: N DATA PROBLEM: N LANDSCAPE: N LESS THAN 50 YEARS: N
OTHER: N PDIL: N PERIOD: N PROGRAM UNAPPROVED: N
REQUEST: Y SAMPLE: N SLR DRAFT: N NATIONAL: N

COMMENT WAIVER: N

 ACCEPT RETURN REJECT DATE

ABSTRACT/SUMMARY COMMENTS:

Additional Documentation Approved

RECOM./CRITERIA Accept
REVIEWER Edson Beall DISCIPLINE History
TELEPHONE _____ DATE 6-28-16

DOCUMENTATION see attached comments Y/N see attached SLR Y/N

If a nomination is returned to the nominating authority, the nomination is no longer under consideration by the NPS.

United States Department of the Interior
National Park Service

National Register of Historic Places
Continuation Sheet

Doniphan County Waddell Truss Bridge
Doniphan County, Kansas
Nomination Amendment

Section numbers 2, 6, 7, 10 Page 1

Doniphan County Waddell Truss Bridge
Doniphan County, Kansas

89002185

Background

The Doniphan County Waddell Truss Bridge was listed in the National Register of Historic Places January 4, 1990. A proposal to relocate the bridge and retain its National Register status was approved by the Kansas Historic Sites Board of Review in May 2013. The Keeper of the National Register approved the relocation request June 26, 2013. The bridge was reinstalled in its new location in October 2015. This amendment provides additional information on the new location. It is intended to supplement and update the information provided in the original nomination.

Section 2: Location

Street and Number: Troy City Park, W. Myrtle St.
City: Troy
State: Kansas
Code: KS
County: Doniphan
Code: 043
Zip Code: 66087

Section 6 – Function or Use

Current function: Transportation (Pedestrian-related)

Section 7 – Narrative Description

Constructed circa 1900, this Waddell Truss bridge spanned 36 feet long and 20 feet wide; the deck of the bridge rose 14 feet above a small stream bed along Monument Road in the SW1/4, NE1/4, SW1/4 of Section 3, Township 5 South, Range 21 East (near Doniphan, Doniphan County). Upon relocation to Troy's City Park in October 2015, the bridge continues to span 36 feet long over a small tributary of Mosquito Creek, maintaining its orientation along a NE-SW axis. Two new sloped concrete pads abut both ends of the bridge to allow ADA access.

The bridge retains sufficient integrity to remain eligible for listing in the National Register as part of the *Metal Truss Bridges of Kansas* multiple property listing. When reinstalled in Troy, the bridge's width was narrowed to accommodate pedestrian traffic. The bridge's key features illustrating the construction technology and materials that occurred during its period of significance have been retained. Specifically this includes the entire metal frame (excepting footings) continuing to span its historic length of 36 feet. This Waddell Truss bridge is the only known extant example of this bridge type in Kansas.

Section 10 – Geographical Information

Acreage of property: Less than one acre

GPS Coordinates (Datum = WGS84)

Latitude: 39.787999

Longitude: -95.094707

Verbal Boundary Description: City of Troy, Original Town, Block 6, Lot 7

**United States Department of the Interior
National Park Service**

**National Register of Historic Places
Continuation Sheet**

Doniphan County Waddell Truss Bridge
Doniphan County, Kansas
Nomination Amendment

Section numbers 2, 6, 7, 10 Page 2

Additional Documentation

Photographs

Property Name: Doniphan County Waddell Truss Bridge / Doniphan County, KS
Photographer: City of Troy, Park Committee
Date: March 2016

Photo 1: View of bridge in new location, looking SW
Photo 2: View of bridge in new location, looking NE

Map (Source: Doniphan County, Kansas GIS online)



Patrick Zollner
Patrick Zollner, Deputy State Historic Preservation Officer

5-9-16
Date





National Register of Historic Places
Memo to File

Correspondence

The Correspondence consists of communications from (and possibly to) the nominating authority, notes from the staff of the National Register of Historic Places, and/or other material the National Register of Historic Places received associated with the property.

Correspondence may also include information from other sources, drafts of the nomination, letters of support or objection, memorandums, and ephemera which document the efforts to recognize the property.

UNITED STATES DEPARTMENT OF THE INTERIOR
NATIONAL PARK SERVICE

NATIONAL REGISTER OF HISTORIC PLACES
EVALUATION/RETURN SHEET

REQUESTED ACTION: NOMINATION

PROPERTY Doniphan County Waddell
NAME:

MULTIPLE Metal Truss Bridges in Kansas 1861--1939 MPS
NAME:

STATE & COUNTY: KANSAS, Doniphan

DATE RECEIVED: 11/28/89 DATE OF PENDING LIST: 12/12/89
DATE OF 16TH DAY: 12/28/89 DATE OF 45TH DAY: 1/12/90
DATE OF WEEKLY LIST:

REFERENCE NUMBER: 89002185

NOMINATOR: STATE

REASONS FOR REVIEW:

APPEAL: N DATA PROBLEM: N LANDSCAPE: N LESS THAN 50 YEARS: N
OTHER: N PDIL: N PERIOD: N PROGRAM UNAPPROVED: N
REQUEST: N SAMPLE: N SLR DRAFT: Y NATIONAL: N

COMMENT WAIVER: N

ACCEPT RETURN REJECT 1/4/90 DATE

ABSTRACT/SUMMARY COMMENTS:

This bridge is the only surviving example of a Waddell "A" Truss bridge in Kansas.

~~* Add criterion A to National Register Criteria.~~ → *No: delete transportation.*
** materials - add wooden planks at floor.*

RECOM./CRITERIA Accept 1A+C
REVIEWER Antoinette Cree
DISCIPLINE History
DATE 1/31/90

*Accept - C
Poland
Historia
1/4/90*

DOCUMENTATION see attached comments Y/N see attached SLR Y/N

CLASSIFICATION

count resource type

STATE/FEDERAL AGENCY CERTIFICATION

FUNCTION

historic current

DESCRIPTION

architectural classification
 materials
 descriptive text

SIGNIFICANCE

Period Areas of Significance--Check and justify below

Specific dates Builder/Architect
Statement of Significance (in one paragraph)

summary paragraph
 completeness
 clarity
 applicable criteria
 justification of areas checked
 relating significance to the resource
 context
 relationship of integrity to significance
 justification of exception
 other

BIBLIOGRAPHY

GEOGRAPHICAL DATA

acreage verbal boundary description
 UTM's boundary justification

ACCOMPANYING DOCUMENTATION/PRESENTATION

sketch maps USGS maps photographs presentation

OTHER COMMENTS

Questions concerning this nomination may be directed to

_____ Phone _____

Signed _____ Date _____

Kansas Historical Society

Sam Brownback, Governor
Jennie Chunn, Executive Director

May 8, 2013

Carol Shull
National Register of Historic Places
National Park Service
1201 Eye Street, N. W.
8th Floor (MS 2280)
Washington, DC 20005



Dear Ms. Shull:

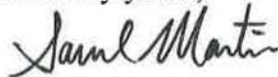
We are pleased to submit for your consideration the following National Register documents:

- Belleville High School – Belleville, Republic County, KS (new nomination)
- Naomi & Leona Apartment Buildings – Wichita, Sedgwick County, KS (new nomination)
- Ellington Apartment Building – Wichita, Sedgwick County, KS (new nomination)
- McNee Barns – Elmdale, Chase County, KS (new nomination)
- Click Farmstead – Beloit, Mitchell County, KS (new nomination)
- Franklin Elementary School – Kansas City, Wyandotte County, KS (new nomination)
- Baker, Cassius & Adelia, House – Wamego, Pottawatomie County, KS (new nomination)
- Creed-Mills House – Douglass, Butler County, KS (new nomination)
- Doniphan Waddell Truss Bridge – Doniphan County, KS (relocation request)

89002183

Please do not hesitate to contact me if you have any questions. I may be reached at 785-272-8681 ext. 216 or smartin@kshs.org.

Sincerely yours,



Sarah J. Martin
National Register Coordinator

Enclosures



RECEIVED 2280

MAY 13 2016

Nat. Register of Historic Places
National Park Service
phone: 785-272-8681
fax: 785-272-8682
cultural_resources@kshs.org

6425 SW 6th Avenue
Topeka KS 66615

Sam Brownback, Governor
Jennie Chinn, Executive Director

May 9, 2016

Paul Loether, National Register Chief
National Register of Historic Places
National Park Service
1201 Eye Street, NW (2280)
Washington, DC 20005

Re: National Register documents

Dear Mr. Loether:

Please find enclosed the following National Register documents:

89002185

- **Doniphan County Waddell Truss Bridge; Doniphan County, Kansas** (amendment)
 - Enclosed: Physical, signed copy of the amendment; 1 CD (disk #1) with a PDF of the amendment; 1 CD (disk #2) with photographs
 - The enclosed disk #1 contains the true and correct copy of the amendment.

- **John A. Martin Grade School; Atchison, Atchison County, Kansas** (new nomination)
 - Enclosed: Physical, signed copy of the nomination's first page; 1 CD (disk #1) with a PDF of the nomination; 1 CD (disk #2) with photographs
 - The enclosed disk #1 contains the true and correct copy of the nomination.

- **Oak Grove School, St. Paul vicinity; Neosho County, Kansas** (new nomination)
 - Enclosed: Physical, signed copy of the nomination's first page; 1 CD (disk #1) with a PDF of the nomination; 1 CD (disk #2) with photographs
 - The enclosed disk #1 contains the true and correct copy of the nomination.

- **Colorado-Derby Building; Wichita, Sedgwick County, Kansas** (new nomination)
 - Enclosed: Physical, signed copy of the nomination's first page; 1 CD (disk #1) with a PDF of the nomination, a copy of the Part 1 denial, and two letters of support; 1 CD (disk #2) with photographs
 - The enclosed disk #1 contains the true and correct copy of the nomination.

- **Steele, Herbert & Eliza, House; Scott City vicinity, Scott County, Kansas (new nomination)**
 - Enclosed: Physical, signed copy of the nomination's first page; 1 CD (disk #1) with a PDF of the nomination, .KMZ file, and a letter of support; 1 CD (disk #2) with photographs
 - The enclosed disk #1 contains the true and correct copy of the nomination

- **Iowa Tribe Community Building; Iowa Tribe of Kansas & Nebraska Reservation, White Cloud vicinity, Brown County, Kansas (new nomination)**
 - Enclosed: Physical, signed copy of the nomination's first page; 1 CD (disk #1) with a PDF of the nomination and a .KML file; 1 CD (disk #2) with photographs
 - The enclosed disk #1 contains the true and correct copy of the nomination
 - Please note: This nomination is being submitted by the Kansas SHPO on behalf of Lance Foster, Tribal Historic Preservation Officer for the Iowa Tribe of Kansas & Nebraska. Mr. Foster signed the first page as the certifying official; Patrick Zollner, Deputy Kansas SHPO, signed the first page as the commenting official.

If you have any questions about these enclosed items, please contact me at 785-272-8681 ext. 216 or aloughlin@kshs.org.

Sincerely,



Amanda K. Loughlin
National Register Coordinator

Enclosures

cc: Lance Foster