



NPS Number Sept 7, 1978

Title: Blennerhassett Island

Historic Area

Loc. Wood County W.V

Arrival Point of Blennerhassett Island

91-2152-PM

NO. WV-2112-16

DATE: 12-2-78

REVIEWER: Rivers

APPROVED: WILLIS J. RIDENOUR

DATE: PARKERSBURG, W. VA.

APPROVED: EK SCD - Wood County

REMARKS: Little Kanawha River and Ohio River at Parkersburg. Historic Blennerhassett Island in background. Located in Little Kanawha River Project Area.

PHOTOGRAPHED BY: [illegible]

PROPERTY OF THE NATIONAL REGISTER



NPS Number Sept 7, 1972

Title: Blennerhassett Island  
Historic Area

Loc: Wood County, W. Va.  
First tulip poplar  
tree over 7 feet in diameter  
located on Blennerhassett Island

DATE: 9-22-72 NO. 89-2825-7

SURVEY: IV - Notable Features

PROPERTY: Mills J. Ridgway, INCORP SO

LOCATION: 3 miles southeast of Parkersburg, Wood County, West Virginia

CONSERVATION: D. Little Kanawha SOD

REMARKS:

Members of Little Kanawha National Recreation and Tourism-Development Commission looking at giant tulip poplar tree over 7 feet in diameter located on Blennerhassett Island. A specimen of the Little Kanawha SOD to develop the historic island for public benefit.

WV 2825-7

PROPERTY OF THE NATIONAL REGISTER

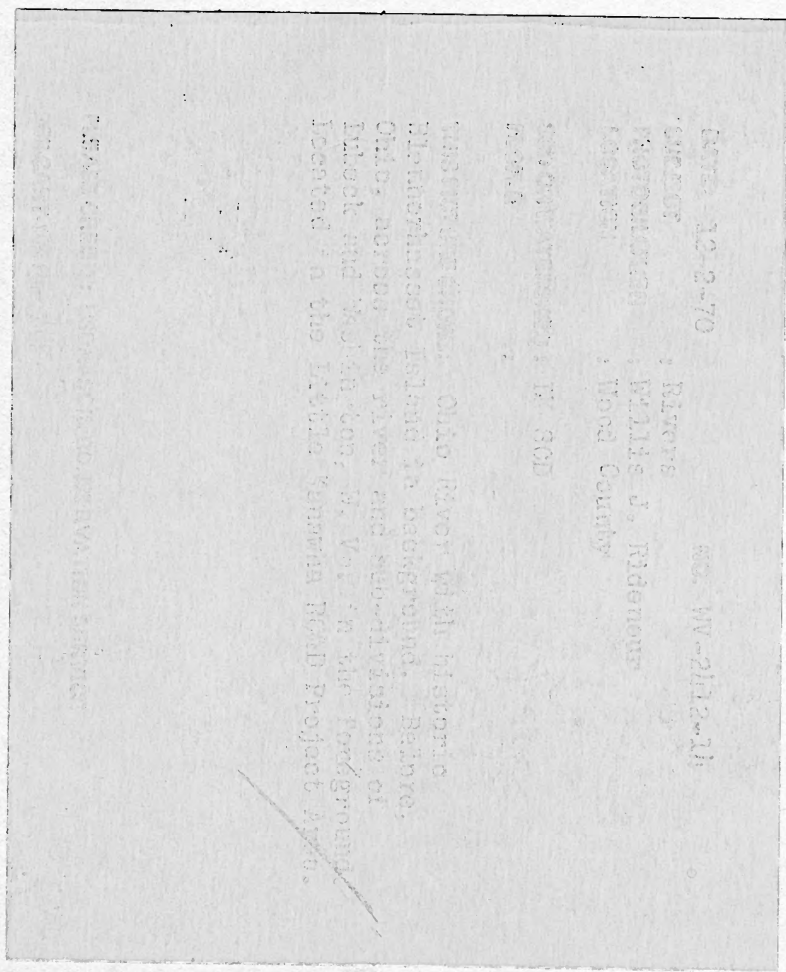


NPS Number Sept 7, 1972

Title: Blennerhassett Island  
Historic District

Loc. Wood County, W.V.

Aerial view of Blennerhassett  
Island Historic District.



WV 29112-11

PROPERTY OF THE NATIONAL REGISTER