



1. BANCROFT MILLS, Rockford Plant
Interior Building 5a showing square
posts and slow-burning mill construction.
2. Rockford Road at the Brandywine River
Wilmington, Delaware 19806
3. John Milner Associates, Inc. photographer
4. April 9, 1984
5. Negatives on file
Division of Historical and Cultural Affairs
Bureau of Archaeology and History Preservation
Dover, Delaware 19901
6. Camera facing west
7. Plate 1



SAFETY IS
everybody's
BUSINESS

1. BANCROFT MILLS, Rockford Plant
Building 46 - closeup, turned column with
iron cap.
2. Rockford Road at the Brandywine River
Wilmington, Delaware 19806
3. Peter Liebhold photographer
1316 Patapsco Street, Baltimore, Maryland 21230
4. April 9, 1984
5. Negatives on file
Division of Historical and Cultural Affairs
Bureau of Archaeology and History Preservation
Dover, Delaware 19901
6. Camera facing NA
7. Plate 2



1. BANCROFT MILLS, Rockford Plant
Interior, Building 46, showing flanged square
posts, slow-burning mill construction.
2. Rockford Road at the Brandywine River
Wilmington, Delaware 19806
3. Peter Liebhold photographer
1316 Patapsco Street, Baltimore, Maryland 21230
4. April 9, 1984
5. Negatives on file
Division of Historical and Cultural Affairs
Bureau of Archaeology and History Preservation
Dover, Delaware 19901
6. Camera facing east
7. Plate 3



1. BANCROFT MILLS
The Kentmere and Rockford Plants (aerial)
Looking north and west from east terminus of
Kentmere plant; cf Figure 1 to document general
integrity of existing conditions. Shown, but
no longer existing, are Building
2. Rockford Road at the Brandywine River
Wilmington, Delaware 19806
3. Dallin Aerial Surveys, Philadelphia, photographer
4. February 26, 1931
5. Negatives on file: Accession 69.25.10
Hagley Museum and Library
P. O. Bxo 3630
Greenville, Wilmington, Delaware 19807
6. Camera facing north and west
7. Plate 4



1. BANCROFT MILLS
Rockford and Kentmere Plants (aerial)
Looking east from west terminus of Rockford plant.
2. Rockford Road at the Brandywine River
Wilmington, Delaware 19806
3. Dallin Aerial Surveys, Philadelphia, photographer
4. February 26, 1931
5. Negatives on file: Accession 69.25.13
Hagley Museum and Library
P. O. Box 3630
Greenville, Wilmington, Delaware 19807
6. Camera facing east and south
7. Plate 5



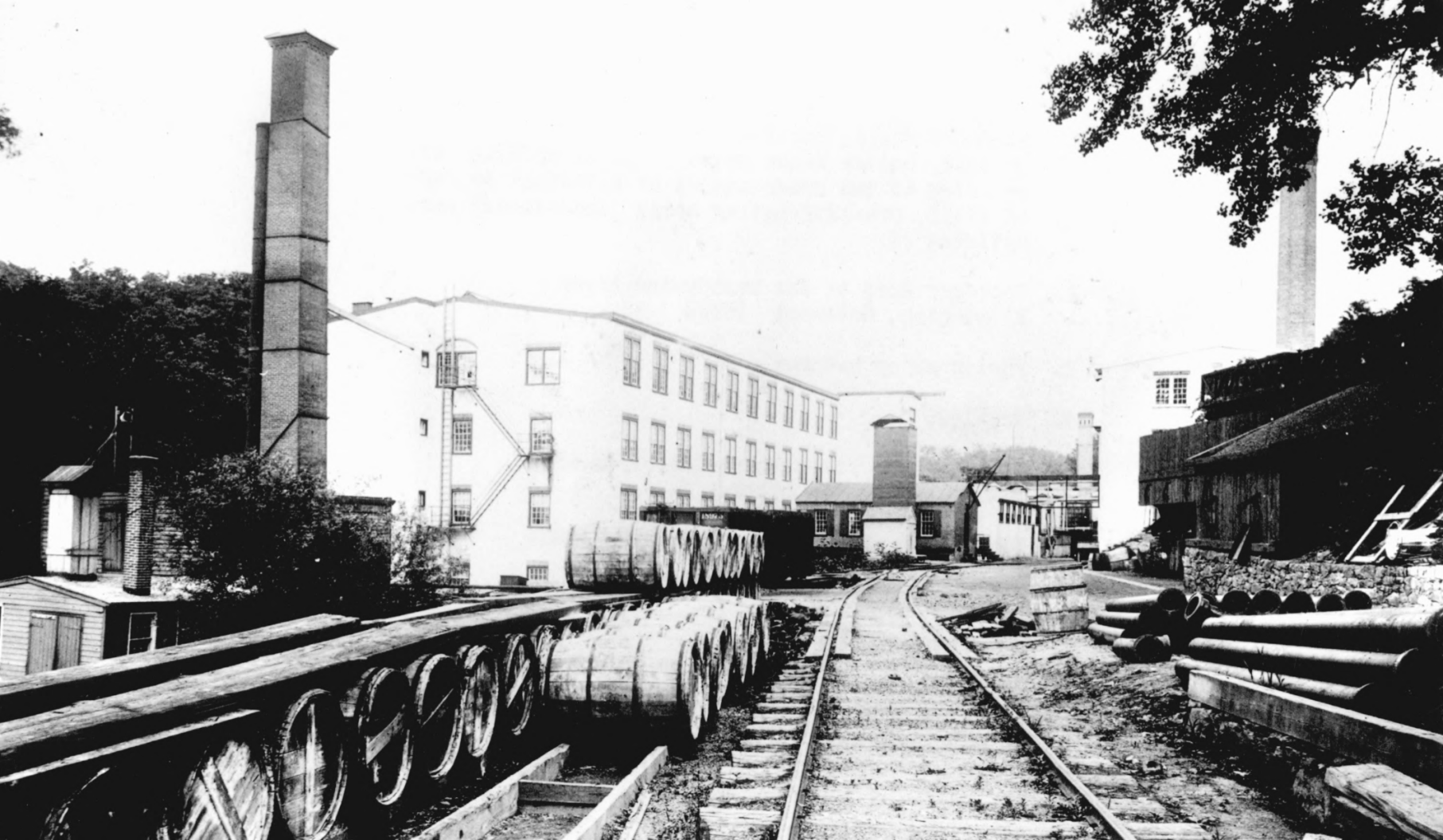
1. BANCROFT MILLS, Kentmere Plant
Bancroft Mills as seen through Kentmere gate.
From left to right, Buildings 7a, 7, part of
Building 4, Buildings 10, 8, 13. Also Building
66 in right foreground.
2. Rockford Road at the Brandywine River
Wilmington, Delaware 19806
3. John Milner Associates, Inc. photographer
4. April 27, 1984
5. Negatives on file
Division of Historical and Cultural Affairs
Bureau of Archaeology and History Preservation
Dover, Delaware 19901
6. Camera facing west northwest
7. Plate 6



1. BANCROFT MILLS, Rockford Plant
Building 51 (at left), stack of Building 25
(center), and Buildings 26, 27 (right); right
building unidentified.
2. Rockford Road at the Brandywine River
Wilmington, Delaware 19806
3. John Milner Associates, Inc. photographer
4. April 9, 1984
5. Negatives on file
Division of Historical and Cultural Affairs
Bureau of Archaeology and History Preservation
Dover, Delaware 19901
6. Camera facing east
7. Plate 7



1. BANCROFT MILLS, Rockford Plant
Buildings 50, 46; demolished boiler plant (fore-
ground), and demolished offices/Building 29 (rear).
2. Rockford Road at the Brandywine River
Wilmington, Delaware 19806
3. Albert C. Philips Photographer
4. 1888
5. Negatives on file; Accession 69.25.4 (Box 1)
Hagley Museum and Library
P. O. Box 3630
Greenville, Wilmington, Delaware 19807
6. Camera facing south
7. Plate 8 (compare with Figure 7)



1. BANCROFT MILLS, Rockford Plant
On left, boiler house which predates Building 44;
Building 46 and predecessors of Buildings 47, 48
on right, pre-1892 boiler house (demolished) near
Building 29
2. Rockford Road at the Brandywine River
Wilmington, Delaware 19806
3. Photographer unknown
4. Pre-1905
5. Negatives on file; Accession 69.25.82
Hagley Museum and Library
P. O. Box 3630
Greenville, Wilmington, Delaware 19807
6. Camera facing east
7. Plate 9



1. BANCROFT MILLS, Rockford Plant
Buildings 44, 46, 47, 48, 49 on left; Building
30 on right
2. Rockford Road at the Brandywine River
Wilmington, Delaware 19806
3. Peter Liebhold, photographer
1316 Patapsco Street, Baltimore, Maryland 21230
4. April 9, 1984
5. Negatives on file
Division of Historical and Cultural Affairs
Bureau of Archaeology and History Preservation
Dover, Delaware 19901
6. Camera facing east
7. Plate 10



1. BANCROFT MILLS, Rockford Plant
Building 41 in foreground; basin adjacent; J.
Morton Poole house in background
2. Rockford Road at the Brandywine River
Wilmington, Delaware 19806
3. John Milner Associates, Inc. photographer
4. April 9, 1984
5. Negatives on file
Division of Historical and Cultural Affairs
Bureau of Archaeology and History Preservation
Dover, Delaware 19901
6. Camera facing southwest
7. Plate 11



1. BANCROFT MILLS, Rockford Plant from upper iron bridge
Buildings 52, 51, 50, 46, 44, and 41; also J. Morton Poole house in distance
2. Rockford Road at the Brandywine River
Wilmington, Delaware 19806
3. John Milner Associates, Inc. photographer
4. April 27, 1984
5. Negatives on file
Division of Historical and Cultural Affairs
Bureau of Archaeology and History Preservation
Dover, Delaware 19901
6. Camera facing west
7. Plate 12



1. BANCROFT MILLS, Rockford Plant
Buildings 44, 46, 52, 53, stack of 25
2. Rockford Road at the Brandywine River
Wilmington, Delaware 19806
3. Peter Liebhold, photographer
1316 Patapsco Street, Baltimore, Maryland 21230
4. April 9, 1984
5. Negatives on file
Division of Historical and Cultural Affairs
Bureau of Archaeology and History Preservation
Dover, Delaware 19901
6. Camera facing east
7. Plate 13



1. BANCROFT MILLS, Rockford Plant
Building 46, looking upriver
2. Rockford Road at the Brandywine River
Wilmington, Delaware 19806
3. J. Maybin, photographer
4. c.1875
5. Negatives on file
Hagley Museum and Library
P. O. Box 3630
Greenville, Wilmington, Delaware 19807
6. Camera facing west northwest
7. Plate 14



PRINCE J

1. BANCROFT MILLS, Rockford Plant
Interior, Building 46, showing turned posts
(right) and square post (left)
2. Rockford Road at the Brandywine River
Wilmington, Delaware 19806
3. Peter Liebhold, photographer
1316 Patapsco Street, Baltimore, Maryland 21230
4. April 9, 1984
5. Negatives on file
Division of Historical and Cultural Affairs
Bureau of Archaeology and History Preservation
Dover, Delaware 19901
6. Camera facing west
7. Plate 15



1. BANCROFT MILLS, Rockford Plant
Basement, Building 46 (expanded) showing
remains of pre-1866 wheel pit
2. Rockford Road at the Brandywine River
Wilmington, Delaware 19806
3. Peter Liebhold, photographer
1316 Patapsco Street, Baltimore, Maryland 21230
4. April 9, 1984
5. Negatives on file
Division of Historical and Cultural Affairs
Bureau of Archaeology and History Preservation
Dover, Delaware 19901
6. Camera facing south
7. Plate 16



1. BANCROFT MILLS, Rockford Plant
Interior, Building 46, showing turbine housing
2. Rockford Road at the Brandywine River
Wilmington, Delaware 19806
3. Peter Liebhold, photographer
1316 Patapsco Street, Baltimore, Maryland 21230
4. April 9, 1984
5. Negatives on file
Division of Historical and Cultural Affairs
Bureau of Archaeology and History Preservation
Dover, Delaware 19901
6. Camera facing south
7. Plate 17



1. BANCROFT MILLS, Rockford Plant
Fifth floor, Building 46
2. Rockford Road at the Brandywine River
Wilmington, Delaware 19806
3. Peter Liebhold, photographer
1316 Patapsco Street, Baltimore, Maryland 21230
4. January 28, 1984
5. Negatives on file
Division of Historical and Cultural Affairs
Bureau of Archaeology and History Preservation
Dover, Delaware 19901
6. Camera facing west
7. Plate 18



1. BANCROFT MILLS, Rockford Plant
Buildings 46, 50, 52; stack of Building 25,
and upper iron truss bridge
2. Rockford Road at the Brandywine River
Wilmington, Delaware 19806
3. John Milner Associates, Inc., photographer
4. April 9, 1984
5. Negatives on file
Division of Historical and Cultural Affairs
Bureau of Archaeology and History Preservation
Dover, Delaware 19901
6. Camera facing east
7. Plate 19



54 ←

FORD

1. BANCROFT MILLS, Rockford Plant
Buildings 46, 49, and 50a
2. Rockford Road at the Brandywine River
Wilmington, Delaware 19806
3. John Milner Associates, Inc., photographer
4. January 28, 1984
5. Negatives on file
John Milner Associates, Inc.
309 North Matlack Street
West Chester, Pennsylvania 19380
6. Camera facing northeast
7. Plate 20



FIRE ALARM
NOTICE
NUMBER 1516172336
ON SPRING
EMPLOYER
LEAVE THIS
1933

1. BANCROFT MILLS, Rockford Plant
Interior, Building 48
2. Rockford Road at the Brandywine River
Wilmington, Delaware 19806
3. John Milner Associates, Inc., photographer
4. January 28, 1984
5. Negatives on file
John Milner Associates, Inc.
309 North Matlack Street
West Chester, Pennsylvania 19380
6. Camera facing west
7. Plate 21



1. BANCROFT MILLS, Rockford Plant
Buildings 47, 48 foreground; 46, rear
2. Rockford Road at the Brandywine River
Wilmington, Delaware 19806
3. John Milner Associates, Inc., photographer
4. January 28, 1984
5. Negatives on file
John Milner Associates, Inc.
309 North Matlack Street
West Chester, Pennsylvania 19380
6. Camera facing north
7. Plate 22



1. BANCROFT MILLS, Rockford area
Warren Truss, Building 49
2. Rockford Road at the Brandywine River
Wilmington, Delaware 19806
3. Peter Liebhold, photographer
1316 Patapsco Street, Baltimore, Maryland 21230
4. April 9, 1984
5. Negatives on file
Division of Historical and Cultural Affairs
Bureau of Archaeology and History Preservation
Dover, Delaware 19901
6. Camera facing south
7. Plate 23



1. BANCROFT MILLS, Kentmere Plant
Buildings 54, 56, 63, 68, 6a, and 16 as seen
from upper iron bridge
2. Rockford Road at the Brandywine River
Wilmington, Delaware 19806
3. John Milner Associates, Inc., photographer
4. April 27, 1984
5. Negatives on file
Division of Historical and Cultural Affairs
Bureau of Archaeology and History Preservation
Dover, Delaware 19901
6. Camera facing east southeast
7. Plate 24



1. BANCROFT MILLS, Rockford Plant
Buildings 5, 4, 55, and 63 (left) and wall of
Building 25 (right)
2. Rockford Road at the Brandywine River
Wilmington, Delaware 19806
3. John Milner Associates, Inc., photographer
4. April 27, 1984
5. Negatives on file
Division of Historical and Cultural Affairs
Bureau of Archaeology and History Preservation
Dover, Delaware 19901
6. Camera facing east
7. Plate 25



1. BANCROFT MILLS, Rockford Plant
Rockford dam
2. Rockford Road at the Brandywine River
Wilmington, Delaware 19806
3. Peter Liebhold, photographer
1316 Patapsco Street, Baltimore, Maryland 21230
4. April 9, 1984
5. Negatives on file
Division of Historical and Cultural Affairs
Bureau of Archaeology and History Preservation
Dover, Delaware 19401
6. Camera facing west
7. Plate 26



1878

1. BANCROFT MILLS, Rockford Plant
Bulkhead, Rockford dam and race
2. Rockford Road at the Brandywine River
Wilmington, Delaware 19806
3. Peter Liebhold, photographer
1316 Patapsco Street, Baltimore, Maryland 21230
4. April 9, 1984
5. Negatives on file
Division of Historical and Cultural Affairs
Bureau of Archaeology and History Preservation
Dover, Delaware 19901
6. Camera facing north
7. Plate 27



1. BANCROFT MILLS, Rockford Plant
Headrace in line with Brandywine Falls
condominium community
2. Rockford Road at the Brandywine River
Wilmington, Delaware 19806
3. John Milner Associates, Inc., photographer
4. February 10, 1984
5. Negatives on file
Division of Historical and Cultural Affairs
Bureau of Archaeology and History Preservation
Dover, Delaware 19901
6. Camera facing east
7. Plate 28



1. BANCROFT MILLS, Rockford area
J. Morton Poole House
2. Rockford Road at the Brandywine River
Wilmington, Delaware 19806
3. Peter Liebhold, photographer
1316 Patapsco Street, Baltimore, Maryland 21230
4. April 9, 1984
5. Negatives on file
Division of Historical and Cultural Affairs
Bureau of Archaeology and History Preservation
Dover, Delaware 19901
6. Camera facing southwest
7. Plate 29