



BEDDLE BUILDING (1925)

520 SW 6TH AVENUE

PORTLAND, MULTNOMAH COUNTY, OREGON

STREET LEVEL ELEVATION

LOCATION: WEST

COPY NEGATIVE: HERITAGE INVESTMENT CORP.
123 NW 2ND AVENUE, #200
PORTLAND, OR 97209

DALE ARCHER PHOTOGRAPHY - 1988

1 OF 25



BEDELL BUILDING (1925)

520 SW 6TH AVENUE

PORTLAND, MULTNOMAH COUNTY, OREGON

STREET LEVEL

LOCATION: WEST

COPY NEGATIVE: HERITAGE INVESTMENT CORP
123 NW 2ND AVENUE, #200
PORTLAND, OR 97209

DALE ARCHER PHOTOGRAPHY - 1988

2 OF 25

busy shoes
INSTANT SHOE REPAIR

INSTANT
SHOE
REPAIR

INSTANT SHOE REPAIR

PLAZA
FOR LEASE
GROUND FLOOR
&
LOWER LEVEL
SUA, AB 2
SEE BROCHURE
FOR DETAILS
CALL
213-3071

FOR
LEASE
213-3071

BEDELL BUILDING (1925)

520 SW 6TH AVENUE

PORTLAND, MULTNOMAH COUNTY, OREGON

STREET LEVEL ELEVATION

LOCATION: WEST

COPY NEGATIVE: HERITAGE INVESTMENT CORP.

123 NW 2ND AVENUE, # 200

PORTLAND, OR 97209

DALE ARCHER PHOTOGRAPHY - 1988

3 OF 25



BEDSELL BUILDING (1925)

520 SW 6TH AVENUE

PORTLAND, MULTNOMAH COUNTY, OREGON

ELEVATION

LOCATION: WEST

COPY NEGATIVE: HERITAGE INVESTMENT CORP
123 NW 2ND AVENUE, #200
PORTLAND, OR 97209

DALE ARCHER PHOTOGRAPHY - 1988

4 OF 25



BEDELL BUILDING (1925)

520 SW 6TH AVENUE

PORTLAND, MULTNOMAH COUNTY, OREGON

ELEVATION

LOCATION: WEST

COPY NEGATIVE: HERITAGE INVESTMENT CORP.
123 NW 2ND AVENUE, #200
PORTLAND, OR 97209

DALE ARCHER PHOTOGRAPHY - 1988

5 OF 25



BEDELL BUILDING (1925)

520 SW 6TH AVENUE

PORTLAND, MULTNOMAH COUNTY, OREGON

ELEVATION

LOCATION: WEST

COPY NEGATIVE: HERITAGE INVESTMENT CORP

123 NW 2ND AVENUE, #200

PORTLAND, OR 97209

DALE ARHER PHOTOGRAPHY - 1988

6 OF 25



BEDELL BUILDING (1925)

520 SW 6TH AVENUE

PORTLAND, MULTNOMAH COUNTY, OREGON

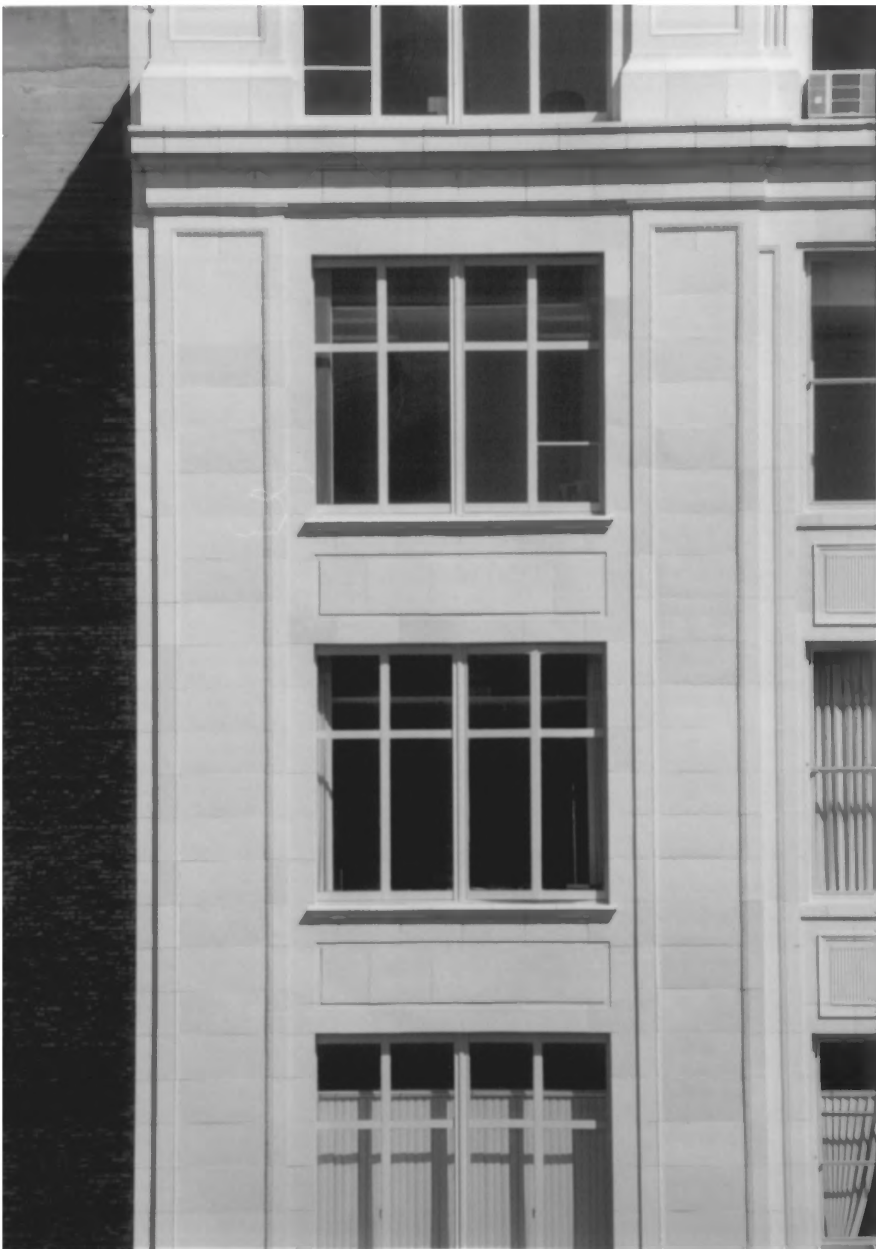
CORNICE DETAIL

LOCATION: WEST ELEVATION

COPY NEGATIVE: HERITAGE INVESTMENT CORP.
123 NW 2ND AVENUE, #200
PORTLAND, OR 97209

DALE ARCHER PHOTOGRAPHY - 1988

7 OF 25



BEDELL BUILDING (1925)

520 SW 6TH AVENUE

PORTLAND, MULTNOMAH COUNTY, OREGON

ELEVATION

LOCATION: WEST

COPY NEGATIVE: HERITAGE INVESTMENT CORP
123 NW 2ND AVENUE, #200
PORTLAND, OR 97209

DALE ARCHE R PHOTOGRAPHY - 1988

8 OF 25



BEDSELL BUILDING (1925)
520 SW 6TH AVENUE
PORTLAND, MULTNOMAH COUNTY, OREGON

ELEVATION

LOCATION: SOUTH

COPY NEGATIVE: HERITAGE INVESTMENT CORP
123 NW 2ND AVENUE #200
PORTLAND, OR 97209

DALE ARCHER PHOTOGRAPHY - 1988

9 OF 25



BEDELL BUILDING (1925)

520 SW 6TH AVENUE

PORTLAND, MULTNOMAH COUNTY, OREGON

SW CORNER

COPY NEGATIVE: HERITAGE INVESTMENT CORP

123 NW 2ND AVENUE, #200

PORTLAND, OR 97209

DALE ARCHER PHOTOGRAPHY - 1988

10 OF 25



BEDELL BUILDING (1925)

520 SW 6TH AVENUE

PORTLAND, MULTNOMAH COUNTY, OREGON

SW CORNER

COPY NEGATIVE: HERITAGE INVESTMENT CORP
123 NW 2ND AVENUE, #209
PORTLAND, OR 97209

DALE ARCHER PHOTOGRAPHY - 1988

11 OF 25



BEDELL BUILDING (1925)

520 SW 6TH AVENUE

PORTLAND, MULTNOMAH COUNTY, OREGON

STREET LEVEL ELEVATION

LOCATION: SOUTH

COPY NEGATIVE: HERITAGE INVESTMENT CORP.

123 NW 2ND AVENUE, #200

PORTLAND, OR 97209

DALE ARCHER PHOTOGRAPHY - 1988

12 OF 25



BEDFELL BUILDING (1925)

520 SW 6TH AVENUE

PORTLAND, MULTNOMAH COUNTY, OREGON

ELEVATION

LOCATION: NORTH

COPY NEGATIVE: HERITAGE INVESTMENT CORP

123 NW 2ND AVENUE, #200

PORTLAND, OR 97209

DALE ARCHER PHOTOGRAPHY - 1988

13 OF 25



PLEASE
DO NOT
SMOKE

BEDELL BUILDING (1925)

520 SW 6TH AVENUE

PORTLAND, MULTNOMAH COUNTY, OREGON

ENTRANCE

LOCATION: 1ST FLOOR

COPY NEGATIVE: HERITAGE INVESTMENT CORP
123 NW 2ND AVENUE, #200
PORTLAND, OR 97209

DALE ARCHER PHOTOGRAPHY - 1988

14 OF 25



BEDSELL BUILDING (1925)

520 SW 6TH AVENUE

PORTLAND, MULTNOMAH COUNTY, OREGON

LOBBY

LOCATION: 1ST FLOOR

COPY NEGATIVE: HERITAGE INVESTMENT CORP

123 NW 2ND AVENUE, #200

PORTLAND, OR 97209

DALE ARCHER PHOTOGRAPHY - 1988

15 OF 25



CASCADE
BLDG.

BEDDELL BUILDING (1925)

520 SW 6TH AVENUE

PORTLAND, MULTNOMAH COUNTY, OREGON

WINDOW DETAIL

LOCATION: 4TH FLOOR

COPY NEGATIVE: HERITAGE INVESTMENT CORP
123 NW 2ND AVENUE, #200
PORTLAND, OR 97209

DALE ARCHER PHOTOGRAPHY -1988

16 OF 25



BEDELL BUILDING (1925)

520 SW 6TH AVENUE

PORTLAND, MULTNOMAH COUNTY, OREGON

5TH FLOOR

LOCATION: EAST

COPY NEGATIVE: HERITAGE INVESTMENT CORP
123 NW 2ND AVENUE, #200
PORTLAND, OR 97209

DALE ARCHER PHOTOGRAPHY - 1988

17 OF 25



LIVE
on
Floor

BEDSELL BUILDING (1925)

520 SW 6TH AVENUE

PORTLAND, MULTNOMAH COUNTY, OREGON

6TH FLOOR

LOCATION: NORTH

COPY NEGATIVE: HERITAGE INVESTMENT CORP
123 NW 2ND AVENUE, #200
PORTLAND, OR 97209

DALE ARCHER PHOTOGRAPHY - 1988

18 OF 25



BEDELL BUILDING (1925)

520 SW 6TH AVENUE

PORTLAND, MULTNOMAH COUNTY, OREGON

8TH FLOOR

LOCATION: EAST

COPY NEGATIVE: HERITAGE INVESTMENT CORP
123 NW 2ND AVENUE, #200
PORTLAND, OR 97209

DALE ARCHER PHOTOGRAPHY - 1988

19 OF 25



BEDELL BUILDING (1925)

520 SW 6TH AVENUE

PORTLAND, MULTNOMAH COUNTY, OREGON

9TH FLOOR

LOCATION: WEST

COPY NEGATIVE: HERITAGE INVESTMENT CORP

123 NW 2ND AVENUE, #200

PORTLAND, OR 97209

DALE ARCHER PHOTOGRAPHY - 1988

20 of 25



CHICAGO
BLDG
10th Floor

CHICAGO
BLDG
10th Floor

BEVELL BUILDING (1925)

520 SW 6TH AVENUE

PORTLAND, MULTNOMAH COUNTY, OREGON


10TH FLOOR

LOCATION: SOUTH

COPY NEGATIVE: HERITAGE INVESTMENT CORP
123 NW 2ND AVENUE, #200
PORTLAND, OR 97209

DALE ARCHER PHOTOGRAPHY - 1988

21 OF 25

A black and white photograph of a staircase. The stairs are on the right side of the frame, leading upwards. A white sign is placed on one of the steps. The sign has the text "STAIRS" on the first line, "TO" on the second line, and "1ST FLOOR" on the third line. To the left of the stairs, there is a dark, narrow passage or hallway. A white horizontal bar is visible in the middle of the frame, possibly a door handle or a piece of equipment. The overall scene is dimly lit, with strong shadows.

STAIRS

TO

1ST FLOOR

BEDELL BUILDING (1925)

520 SW 6TH AVENUE

PORTLAND, MULTNOMAH COUNTY, OREGON

11TH FLOOR

LOCATION: EAST

COPY NEGATIVE : HERITAGE INVESTMENT CORP.
123 NW 2ND AVENUE, #200
PORTLAND, OR 97209

DALE ARCHER PHOTOGRAPHY - 1988

22 OF 25



CASCADE
BLDG
12th FLOOR

BEDELL BUILDING (1925)

520 SW 6TH AVENUE

PORTLAND, MULTNOMAH COUNTY, OREGON

12TH FLOOR

LOCATION: NORTH

COPY NEGATIVE: HERITAGE INVESTMENT CORP
123 NW 2ND AVENUE, # 200
PORTLAND, OR 97209

DALE ARCHER PHOTOGRAPHY - 1988

23 OF 25

EXIT



CASCADE
BLDG
12th FLOOR



BEDELL BUILDING (1925)
520 SW 6TH AVENUE
PORTLAND, MULTNOMAH COUNTY, OREGON

12TH FLOOR

LOCATION: EAST

COPY NEGATIVE: HERITAGE INVESTMENT CORP
123 NW 2ND AVENUE, #200
PORTLAND, OR 97209

DALE ARCHER PHOTOGRAPHY - 1988

24 OF 25



BEDSELL BUILDING (1925)

520 SW 6TH AVENUE

PORTLAND, MULTNOMAH COUNTY, OREGON

12TH FLOOR

LOCATION: EAST

COPY NEGATIVE: HERITAGE INVESTMENT CORP
123 NW 2ND AVENUE, #200
PORTLAND, OR 97209

DALE ARCHER PHOTOGRAPHY - 1988

25 OF 25