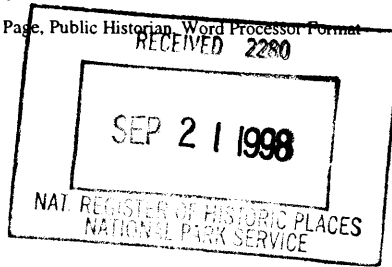


United States Department of the Interior
National Park Service

National Register of Historic Places
Registration Form



1275

This form is for use in nominating or requesting determinations for individual properties and districts. See instructions in *How to Complete the National Register of Historic Places Registration Form* (National Register Bulletin 16A). Complete each item by marking "x" on the appropriate line or by entering the information requested. If an item does not apply to the property being documented, enter "N/A" for "not applicable." For functions, architectural classification, materials, and areas of significance, enter only categories and subcategories from the instructions. Place additional entries and narrative items on continuation sheets (NPS Form 10-900a). Use a typewriter, word processor, or computer, to complete all items.

1. Name of Property

historic name AINSWORTH, WILLIAM W. AND ELIZABETH J., HOUSE

other names/site number Catholic Worker House; Dingman House

2. Location

street & number 1310 7th Street N/A not for publication

city or town Des Moines N/A vicinity

state Iowa code IA county Polk code 153 zip code 50314

3. State/Federal Agency Certification

As the designated authority under the National Historic Preservation Act, as amended, I hereby certify that this (nomination request for determination of eligibility) meets the documentation standards for registering properties in the National Register of Historic Places and meets the procedural and professional requirements set forth in 36 CFR Part 60. In my opinion, the property (meets does not meet) the National Register criteria. I recommend that this property be considered significant (nationally statewide locally). (See continuation sheet for additional comments.)

Patrick O'Neill DSHS
Signature of certifying official/Title
STATE HISTORICAL SOCIETY OF IOWA
State or Federal agency and bureau

9-14-98
Date

In my opinion, the property (meets does not meet) the National Register criteria. (See continuation sheet for additional comments.)

Signature of certifying official/Title

Date

State or Federal agency and bureau

4. National Park Service Certification

I hereby certify that the property is :

- entered in the National Register.
 - See continuation sheet.
- determined eligible for the National Register
 - See continuation sheet
- determined not eligible for the National Register
- removed from the National Register.
- Other, (Explain)

Edson A. Beall
Signature of Keeper

Date of Action

10/22/98

William W. and Elizabeth J. Ainsworth House
Name of Property

Polk County, Iowa
County and State

5. Classification

Ownership of Property Category of Property
(Check as many lines as apply) (Check only one line)

- private
- public-local
- public-State
- public-Federal
- building(s)
- district
- site
- structure
- object

Number of Resources within Property
(Do not include previously listed resources in the count.)

Contributing	Noncontributing	
1	0	buildings
		sites
		structures
		objects
1	0	Total

Name of related multiple property listing
(Enter "N/A" if property is not part of a multiple property listing)

Towards a Greater Des Moines (Amended 1997)

**Number of contributing resources
previously listed in the National Register**

0

6. Function or Use

Historic Functions
(Enter categories from instructions)

DOMESTIC/single dwelling

Current Functions
(Enter categories from instructions)

DOMESTIC/institutional housing

7. Description

Architectural Classification
(Enter categories from instructions)

LATE VICTORIAN/Queen Anne

Materials
(Enter categories from instructions)

foundation Brick

walls Wood

roof Asphalt

other Glass

Narrative Description

(Describe the historic and current condition of the property on one or more continuation sheets.)

William W. and Elizabeth J. Ainsworth House
Name of Property

Polk County, Iowa
County and State

8. Statement of Significance

Applicable National Register Criteria

(Mark "x" on one or more lines for the criteria qualifying the property for National Register listing)

- A** Property is associated with events that have made a significant contribution to the broad patterns of our history.
- B** Property is associated with the lives of persons significant in our past.
- C** Property embodies the distinctive characteristics of a type, period, or method of construction or represents the work of a master, or possesses high artistic values, or represents a significant and distinguishable entity whose components lack individual distinction.
- D** Property has yielded, or is likely to yield, information important in prehistory or history.

Criteria Considerations

(Mark "x" on all the lines that apply)

Property is:

- A** owned by a religious institution or used for religious purposes.
- B** removed from its original location.
- C** a birthplace or grave.
- D** a cemetery.
- E** a reconstructed building, object, or structure.
- F** a commemorative property.
- G** less than 50 years of age or achieved significance within the past 50 years.

Areas of Significance

(Enter categories from instructions)

ARCHITECTURE

Period of Significance

1886

Significant Dates

1886

Significant Person

(Complete if Criterion B is marked above)

N/A

Cultural Affiliation

Architect/Builder

Unknown

Narrative Statement of Significance - (Explain the significance of the property on one or more continuation sheets)

9. Major Bibliography References

Bibliography

(Cite the books, articles and other sources used in preparing this form on one or more continuation sheets.)

Previous documentation on file (NPS):

- previous determination of individual listing (36 CFR 67) has been requested
- previously listed in the National Register
- previously determined eligible by the National Record
- designated a National Historic Landmark
- recorded by American Buildings Survey # _____
- recorded by Historic American Engineering Record # _____

Primary location of additional data:

- State Historical Preservation Office
- Other State agency
- Federal agency
- Local government
- University
- Other

Name of repository

William W. and Elizabeth J. Ainsworth House
Name of Property

Polk County, Iowa
County and State

10. Geographical Data

Acreage of Property Less than one acre

UTM References

(Place additional UTM references on a continuation sheet.)

1 | 15 | 447740 | 4605600 |

Zone Easting Northing

2 | | | |

Zone Easting Northing

3 | | | |

Zone Easting Northing

4 | | | |

Verbal Boundary Description

(Describe the boundaries of the property on a continuation sheet)

Boundary Justification

(Explain why the boundaries were selected on a continuation sheet)

11. Form Prepared By

name/title William C. Page, Public Historian; Joanne R. Walroth, Project Associate

organization River Bend Association, Inc. date March 20, 1997

street & number 520 East Sheridan Avenue telephone 515-243-5740; FAX 515-243-7285

city or town Des Moines state Iowa zip code 50313

Additional Documentation

Submit the following items with the completed form:

Continuation Sheets

Maps

A USGS map (7.5 or 15 minute series) indicating the property's location.

A Sketch map for historic districts and properties having large acreage or numerous resources.

Photographs - Representative black and white photographs of the property.

Additional items - (Check with the SHPO or FPO for any additional items)

Property Owner

(Complete this item at the request of SHPO or FPO.)

name Steve Robertson

street & number 1310 7th Street telephone 515-243-0765

city or town Des Moines state Iowa zip code 50314

Paperwork Reduction Act Statement: This information is being collected for applications to the National Register of Historic Places to nominate properties for listing or determine eligibility for listing, to list properties, and to amend existing listings. Response to this request is required to obtain a benefit in accordance with the National Historic Preservation act, as amended (16 U.S.C. 470 et seq.).

Estimated Burden Statement: Public reporting burden for this form is estimated to average 18.1 hours per response including time for reviewing instructions, gathering and maintaining data, and completing and reviewing the form. Direct comments regarding this burden estimate or any aspect of this form to the Chief, Administrative Services Division, National park Service, P.O. Box 37127, Washington, DC 20013-7127; and the Office of Management and Budget, Paperwork Reductions Projects (1024-0018), Washington, DC 20503.

United States Department of the Interior
National Park Service

NATIONAL REGISTER OF HISTORIC PLACES CONTINUATION SHEET

Section number 7 Page 1

CFN-259-1116

William W. and Elizabeth J. Ainsworth House, Polk County, Iowa.

GENERAL DESCRIPTION

This is a 2-1/2 story, frame building. Built in 1886, this single-family dwelling features a hip roof with intersecting gables, brick foundation, front porch and enclosed porch at the rear, and 2-story bay windows on the south and east elevations. The building is situated on one and one-half city lots. The integrity of this building is outstanding. It has been well maintained over the years and presents few discernible alterations from its period of architectural significance.

HOUSE

Roughly speaking, the footprint of this consists of a rectangle, which measures approximately 25' x 46' (width by depth). A facade porch stands on its east elevation and contains an unenclosed area of about 100 square feet. The rear porch, now enclosed, contains about 144 square feet.

The building is covered with a gable-on-hip roof intersected by gables tied in at lower levels. A gable on the east cover a 2-story bay window; a gable on the south covers a 2-story projection of the building, the first floor of which possesses a bay window; and a gable on the north covers a 2-story extension of the main block.

Covered with a low-pitched hip roof, the facade porch is supported by spindlework columns and features a pedimented entryway located on the northeast corner. This pediment features a sunburst motif.

The building rests on a brick foundation. Of balloon frame construction, the building is clad with original wood siding on the first and second floors. The gable ends of the building feature a variety of architectural embellishments. They include a set of triple windows on the south elevation, a large, double paned window on the east elevation, and millworked detailing. The roof is covered with gray-colored asphalt shingles. A brick chimney is situated slightly west of center along the main ridge line of the roof.

Fenestration is original to the house and generally features 1/1 double hung sash windows. The gable ends, discussed above, provide variations.

In the interior, the first floor and second floor each contains a total area of approximately 1,255 square feet. Floors on the first floor are of hardwood, while those on the second floor are softwood. The walls on the first and second floors are plastered. The basement, which is full, is unfinished and features a concrete floor.

Overall the house is in fine condition. It is presently used as a half-way house for social services. Within the Catholic Worker House program in Des Moines, this resource is known as Dingman House.

United States Department of the Interior
National Park Service

NATIONAL REGISTER OF HISTORIC PLACES
CONTINUATION SHEET

Section number 7 Page 2

CFN-259-1116

William W. and Elizabeth J. Ainsworth House, Polk County, Iowa.

SITE

The Ainsworth House is located in North Park, an early addition in North Des Moines. Initially laid out in 1883 with 36 city lots by W. W. Wise, North Park was expanded twice--in 1884 with 42 additional city lots and in 1886 with 14 additional city lots.

The Ainsworth House itself is situated on Lot 81 of the North Park addition. (See Continuation Sheet 7-4.) Lot 81 measures 75' x 133' (width by depth). The south one-half of Lot 80 is also associated with this property and provides additional lawn area for it. These parcels of land are located at the intersection where Indiana Avenue jogs to the south at 7th Street. The house stands on the west side of 7th Street and faces east.

No ancillary structures are shown on site in 1901, according to a fire insurance map of that date. The locations of privies, which might have stood at one time on this site are not known.

Over the years, 7th Street has been cut down in this vicinity. Today, a steep slope separates the parking and pedestrian walk from the front yard of the Ainsworth House. This slope is now banked with railroad ties. Although this is somewhat distracting visually, a white picket fence is situated between the bank and the house and helps define the historic dooryard of the property. A flight of poured concrete steps, flanked by bulkheads, leads from the public pedestrian walk to this yard. Several mature shade trees stand in this yard and contribute to its sense of place.

The immediate surroundings of the Ainsworth House are generally level in topography. Within two blocks to the east land begins to slope steeply into the Des Moines River valley.

The feeling of this area is residential, albeit densely built-up. Several double houses are located diagonally across the street to the southeast and the New Lawn apartment building is located nearby on 6th Avenue. Situated one block to the east, 6th Avenue serves as an artery into Des Moines' central business district from the north, carries heavy traffic flow, and contains a mix of residential and commercial land uses. Land use immediately surrounding the Ainsworth House remains, however, residential in character.

The Des Moines City Assessor's Office describes this site as in a "blighted area." The U.S. Department of Housing and Urban Development (HUD) has designated this neighborhood as "slum blight."

United States Department of the Interior
National Park Service

NATIONAL REGISTER OF HISTORIC PLACES CONTINUATION SHEET

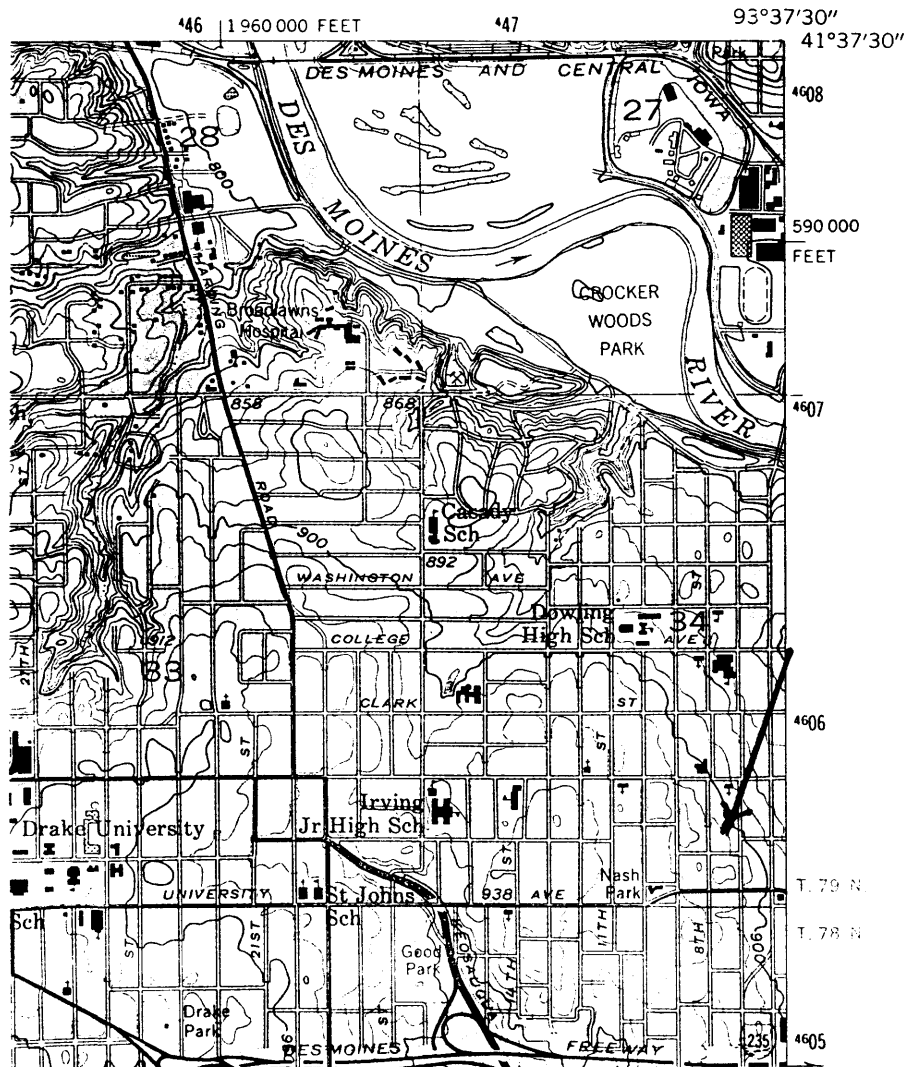
Section number 7 Page 3

CFN-259-1116

William W. and Elizabeth J. Ainsworth House, Polk County, Iowa.

SITE MAP

ARROW LOCATES PROPERTY



United States Department of the Interior
National Park Service

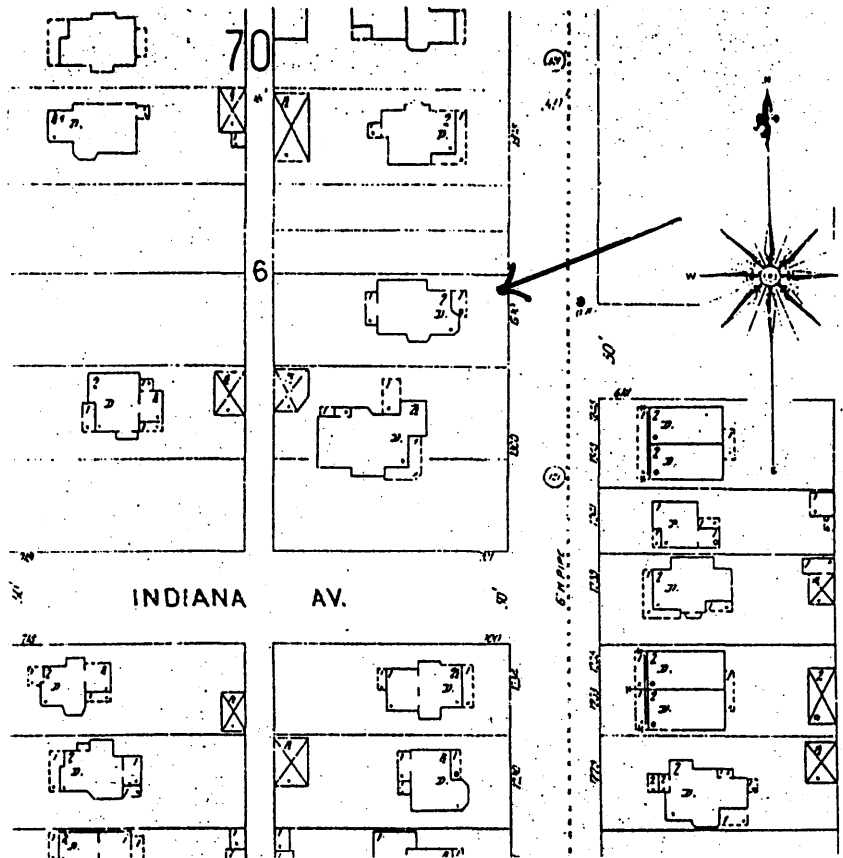
NATIONAL REGISTER OF HISTORIC PLACES CONTINUATION SHEET

Section number 7 Page 4

CFN-259-1116

William W. and Elizabeth J. Ainsworth House, Polk County, Iowa.

1901 FIRE INSURANCE MAP ARROW LOCATES PROPERTY



United States Department of the Interior
National Park Service

NATIONAL REGISTER OF HISTORIC PLACES CONTINUATION SHEET

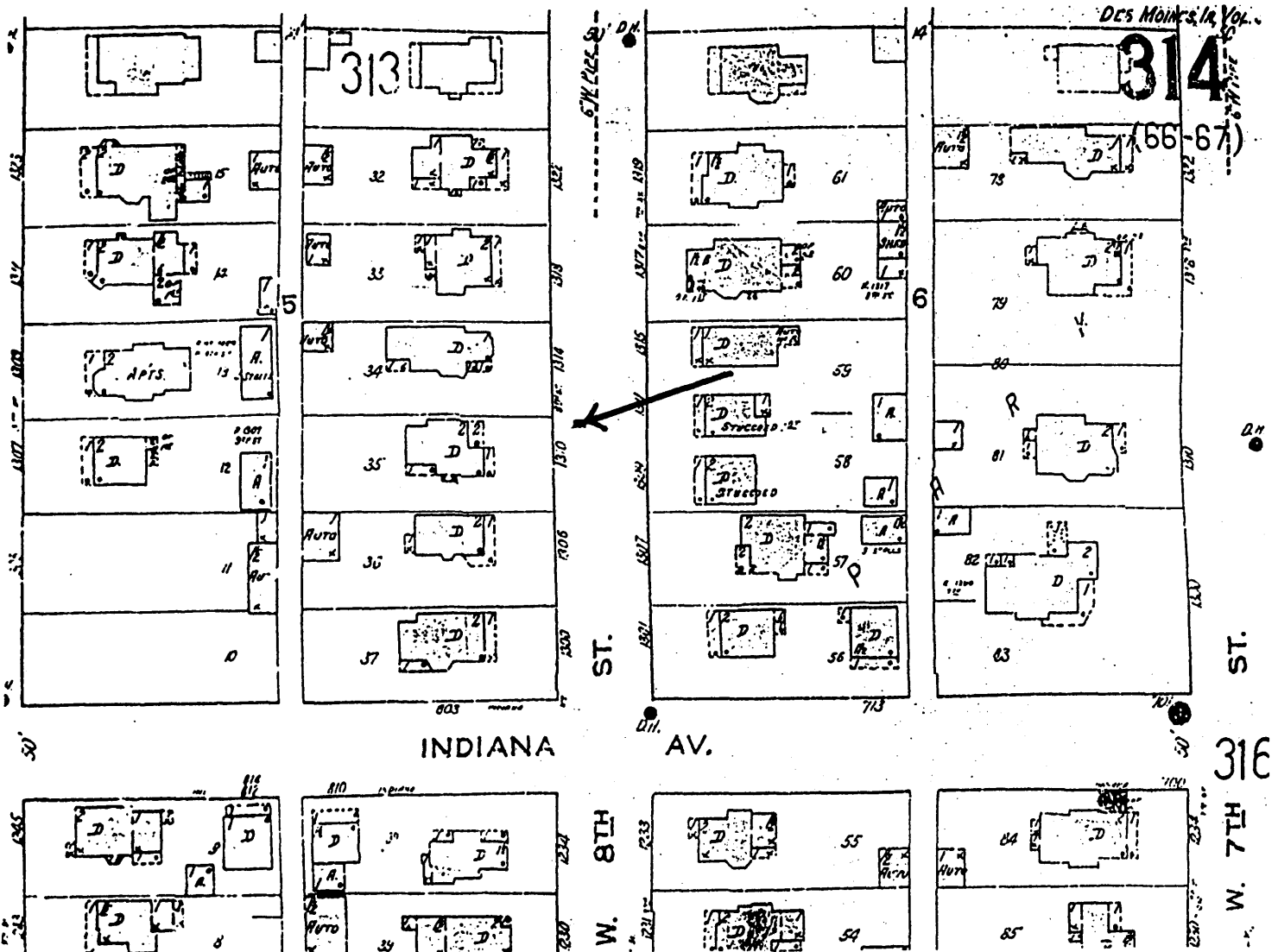
Section number 7 Page 5

CFN-259-1116

William W. and Elizabeth J. Ainsworth House, Polk County, Iowa.

1920 FIRE INSURANCE MAP

ARROW LOCATES PROPERTY



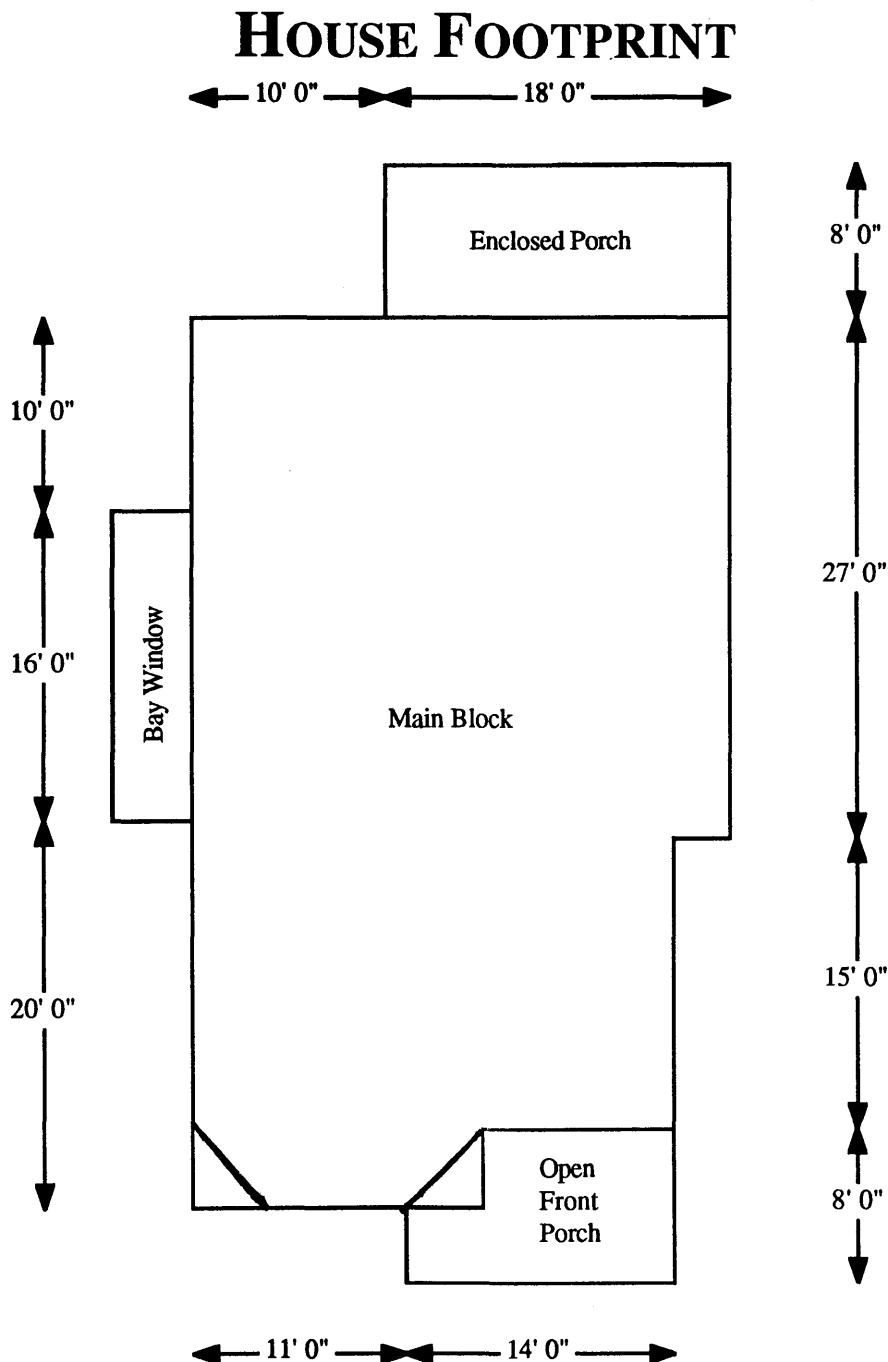
United States Department of the Interior
National Park Service

NATIONAL REGISTER OF HISTORIC PLACES CONTINUATION SHEET

Section number 7 Page 6

CFN-259-1116

William W. and Elizabeth J. Ainsworth House, Polk County, Iowa.



Source: Des Moines City Assessor Office measurements.
William C. Page, computer drawing.

United States Department of the Interior
National Park Service

**NATIONAL REGISTER OF HISTORIC PLACES
CONTINUATION SHEET**

Section number 8 Page 7

CFN-259-1116

William W. and Elizabeth J. Ainsworth House, Polk County, Iowa.

SUMMARY OF SIGNIFICANCE

Built in 1886 as a single-family dwelling, the William W. and Elizabeth J. Ainsworth House possesses architectural significance, locally under National Register Criterion C. The building calls attention to suburban architecture, particularly to the spindlework subtype of the Queen Anne taste, as practiced in North Des Moines during the 1880s.

The period of significance, under Criterion C for the Ainsworth House, is 1886, the year in which it was completed and first occupied by the Ainsworths.

The property contains one resource for this nomination--the house.

Criteria Consideration (Exception) A applies to this nomination. It is satisfied because this property, currently owned by a religious institution in the title of one individual, derives its primary significance from its architectural distinction.

BACKGROUND INFORMATION

William W. Ainsworth was a Des Moines businessman, who engaged in a variety of professional occupations. In 1886-1887 he served as the manager of a trade association, known as the "Jobbers and Manufacturers Association" (City Directory 1886-1887:147). By 1889-1890, he had become "secy [secretary] railroad commissioners" (City Directory 1889-1890:195). By 1899, Ainsworth had become "Superintendent of Agencies" for the National Life & Trust Company of Des Moines. In 1920, his occupation is listed as "Ainsworth Brokerage Co" in conjunction with W. H. Kidder and officed in Room 501 at 222 5th Avenue in Des Moines (City Directory 1920:80). Ainsworth and Kidder provided a general brokerage service for "merchandise," and it was the only food broker listed in the 1920 city directory (*Ibid.*:1704).

Ainsworth's career parallels Des Moines' growth as a commercial center with its focus on railroad, insurance, and wholesale activities. Each of Ainsworth's positions evidences skills of a mid-level manager.

Throughout this period, Ainsworth continued to reside at 1310 7th Street (*Ibid.*). His construction of and residence in the Ainsworth House illustrates the growing importance of North Des Moines as a residential neighborhood for business and professional people in the Des Moines metropolitan area during the 1880s and early 1890s.

Elizabeth J. Ainsworth, his wife, took title in 1886 to Lot 81 in the North Park addition of North Des Moines (*Lands Transfer Book 2A*:195). The Ainsworths proceeded immediately to improve this city lot by constructing the present single-family dwelling. This improvement is documented by two sources. An official property record card show that this house was constructed in "1886." (Des Moines City Assessor Office) City assessor records have proved dependable to document Victorian construction dates in Des Moines. Also, the Des Moines City Directories corroborate this information.

United States Department of the Interior
National Park Service

NATIONAL REGISTER OF HISTORIC PLACES
CONTINUATION SHEET

Section number 8 Page 8

CFN-259-1116

William W. and Elizabeth J. Ainsworth House, Polk County, Iowa.

The directory of 1886-1887, for example, lists "W. W. Ainsworth" residing on the west side of 7th Street at the corner of Indiana Avenue (City Directory 1886-1887:147). This verbal description matches the present location of 1310 7th Street. The city directory of 1889-1890 lists his residence as "7th bet Indiana ave and Forest ave North Des Moines" (City Directory 1889-1890:195).

The Ainsworths subsequently improved their residence by the purchase several years later of the south one-half of Lot 80, the city lot abutting their home on the north (*Lands Transfer Book* 2B:191). This additional land has remained attached to the title of the house to the present day.

ARCHITECTURE

The Ainsworth House stands as a fine example of the Queen Anne style in North Des Moines, particularly the spindlework subtype of that mode, as defined by Virginia and Lee McAlester. Diagnostic characteristics of this influence are evident in the building's roof design, the surface enrichment of its exterior walls, its bay window brackets, and its exuberant front porch.

The roof of the Ainsworth House features a cross-gabled configuration, much favored by the spindlework. Steeply pitched, the roof features a complex arrangement of intersecting gables, including a small side-gable roof at the apex of the design.

The Ainsworth House strives to avoid plain surfaces and achieves this end by employment of the cutaway bay windows with heavy brackets on the facade and south elevation and the ornamented gable ends.

The front porch--with its delicate spindleworked columns, frieze, and brackets--accents the solid massing of the main block. The pedimented entry of the porch repeats the rhythms of the main roof and helps visually unite the overall design of the building.

This house is very-well maintained and conveys the feeling of great integrity of fabric. This integrity is unusually high in the River Bend neighborhood, as well as Des Moines, for dwellings constructed of wood during the Victorian period.

This property presently serves as a group home, known as Dingman House, for the Catholic Worker House organization. This social service organization also operates two other group homes nearby.

REPRESENTATION IN OTHER CULTURAL RESOURCES SURVEYS

This house was also surveyed in 1994 as part of the "Towards a Greater Des Moines" reconnaissance survey of Des Moines' Victorian suburbs. As one resource within the intensive survey of the River Bend neighborhood, another part of this project, this house was evaluated as individually eligible, under Criterion C, for nomination to the National Register of Historic Places. The State Historical Society of Iowa concurred in this determination.

United States Department of the Interior
National Park Service

NATIONAL REGISTER OF HISTORIC PLACES

CONTINUATION SHEET

Section number 8 **Page** 9

CFN-259-1116

William W. and Elizabeth J. Ainsworth House, Polk County, Iowa.

POTENTIAL FOR HISTORICAL ARCHAEOLOGY

The site's potential for archaeological significance is, as yet, unevaluated. Pre-historical archaeological investigations might uncover traces of habitation on the site previous to the Ainsworths' occupancy, but much of the site was disturbed with construction of the house. The location of ancillary structures associated with this property, such as a barn, privy, and/or other service facility, might be identified and yield information of some historical archaeological significance. The 1901 fire insurance map shows, however, no ancillary structures on the site.

United States Department of the Interior
National Park Service

NATIONAL REGISTER OF HISTORIC PLACES CONTINUATION SHEET

Section number 9 Page 10

CFN-259-1116

William W. and Elizabeth J. Ainsworth House, Polk County, Iowa.

BIBLIOGRAPHY

Please refer to Section I of the Multiple Property Documentation Form for complete bibliography.

PRIMARY

Des Moines City Directory; 1886-1887; 1889-1890; 1920; 1943.

Sanborn Fire Insurance Maps for 1901 and 1920.

Lands Transfer Books; Polk County Auditor's Office; Des Moines, Iowa.

SECONDARY

Brigham, Johnson; *Des Moines, the Pioneer of Municipal Progress and Reform of the Middle West together with the History of Polk County, Iowa, the Largest, Most Populous and Most Prosperous County in the State of Iowa*; Chicago: The S. J. Clarke Publishing Company; 1911; 2 volumes.

Des Moines City Assessor's Office, City Assessor's Property Card.

McAlester, Virginia and Lee; *A Field Guide to American Houses*; New York: Alfred A. Knopf; 1984.

Page, William C., and Joanne R. Walroth; *Towards a Greater Des Moines: Early Suburbanization and Development, circa 1880-circa 1920*; Intensive cultural resources report prepared for and on file at the Des Moines Historic District Commission and State Historical Society of Iowa, Des Moines; 1992.

United States Department of the Interior
National Park Service

NATIONAL REGISTER OF HISTORIC PLACES
CONTINUATION SHEET

Section number 10 Page 11

CFN-259-1116

William W. and Elizabeth J. Ainsworth House, Polk County, Iowa.

VERBAL BOUNDARY DESCRIPTION

Lot 81 and the south one-half of Lot 80 in North Park in the City of Des Moines,
Iowa.

BOUNDARY JUSTIFICATION

Contains all land associated historically with the resource, including the south one-half of Lot 80, included in the property's title since at least 1891 and at the time of the Ainsworth occupancy.

United States Department of the Interior
National Park Service

NATIONAL REGISTER OF HISTORIC PLACES CONTINUATION SHEET

Section number 10 Page 12

CFN-259-1116

William W. and Elizabeth J. Ainsworth House, Polk County, Iowa.

LIST OF PHOTOGRAPHS

1. William W. and Elizabeth J. Ainsworth House
1310 7th Street
Des Moines, IA 50314
Looking west
William C. Page, Photographer
March 31, 1997

2. William W. and Elizabeth J. Ainsworth House
1310 7th Street
Des Moines, IA 50314
Looking northwest
William C. Page, Photographer
March 31, 1997

3. William W. and Elizabeth J. Ainsworth House
1310 7th Street
Des Moines, IA 50314
Looking northeast
William C. Page, Photographer
March 31, 1997