





KENTUCKY HERITAGE COUNCIL  
STATE HISTORIC PRESERVATION OFFICE  
FRANKFORT, KENTUCKY 40601

Name John Stone House

Location Bloomfield Vicinity

Photographer Carolyn Torma

Date Taken Spring 1978

Negative Location Kentucky Heritage Council

View View of front facade from the south

Photo # 1 of 12





KENTUCKY HERITAGE COUNCIL  
STATE HISTORIC PRESERVATION OFFICE  
FRANKFORT, KENTUCKY 40601

Name John Stone House

Location Bloomfield Vicinity

Photographer Carolyn Torma

Date Taken Spring 1978

Negative Location Kentucky Heritage Council

View View from the west showing the frame  
Greek Revival ell.

Photo # 2 of 12





KENTUCKY HERITAGE COUNCIL  
STATE HISTORIC PRESERVATION OFFICE  
FRANKFORT, KENTUCKY 40601

Name John Stone House

Location Bloomfield Vicinity

Photographer Carolyn Torma

Date Taken Spring 1978

Negative Location Kentucky Heritage Council

View Detail of front porch

Photo # 3 of 12





KENTUCKY HERITAGE COUNCIL  
STATE HISTORIC PRESERVATION OFFICE  
FRANKFORT, KENTUCKY 40601

Name John Stone House

Location Bloomfield Vicinity

Photographer Carolyn Torma

Date Taken Spring 1978

Negative Location Kentucky Heritage Council

View Interior photo of enclosed stair  
in the west room

Photo # 4 of 12







KENTUCKY HERITAGE COUNCIL  
STATE HISTORIC PRESERVATION OFFICE  
FRANKFORT, KENTUCKY 40601

Name John Stone House

Location Bloomfield Vicinity

Photographer Carolyn Torma

Date Taken Spring 1978

Negative Location Kentucky Heritage Council

View Interior photo of mantel and overmantel  
in east parlor

Photo # 5 of 12





KENTUCKY HERITAGE COUNCIL  
STATE HISTORIC PRESERVATION OFFICE  
FRANKFORT, KENTUCKY 40601

Name John Stone House

Location Bloomfield Vicinity

Photographer Carolyn Torma

Date Taken Spring 1978

Negative Location Kentucky Heritage Council

View Detail of upper left panel of overmantel

Photo # 6 of 12





KENTUCKY HERITAGE COUNCIL  
STATE HISTORIC PRESERVATION OFFICE  
FRANKFORT, KENTUCKY 40601

Name John Stone House

Location Bloomfield Vicinity

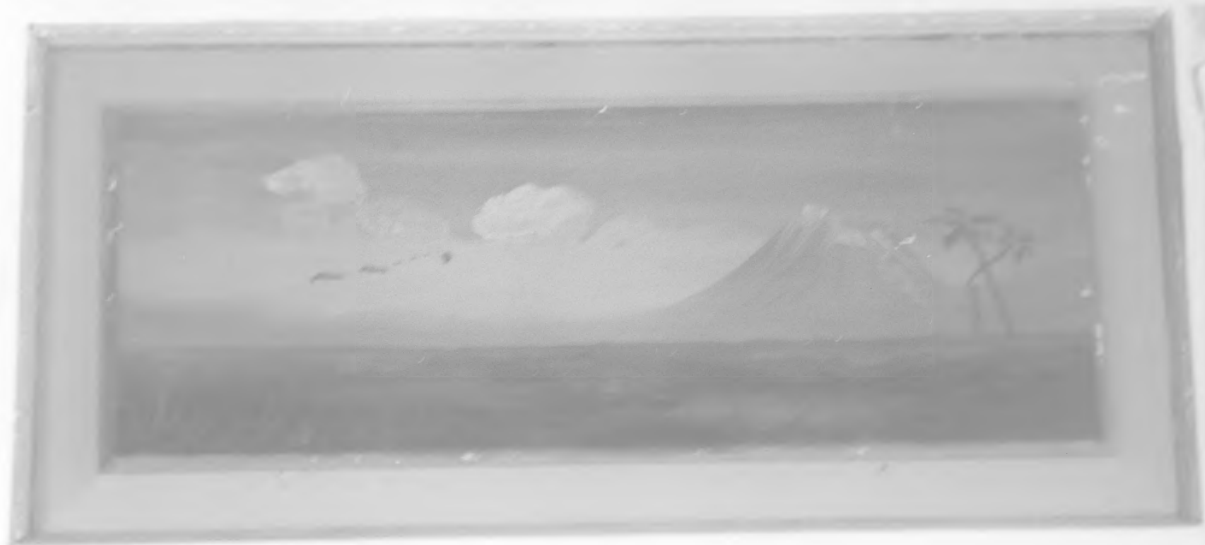
Photographer Carolyn Torma

Date Taken Spring 1978

Negative Location Kentucky Heritage Council

View Detail of upper center panel in overmantel

Photo # 7 of 12





KENTUCKY HERITAGE COUNCIL  
STATE HISTORIC PRESERVATION OFFICE  
FRANKFORT, KENTUCKY 40601

Name John Stone House

Location Bloomfield Vicinity

Photographer Carolyn Torma

Date Taken Spring 1978

Negative Location Kentucky Heritage Council

View Detail of upper right panel of  
overmantel

Photo # 8 of 12







KENTUCKY HERITAGE COUNCIL  
STATE HISTORIC PRESERVATION OFFICE  
FRANKFORT, KENTUCKY 40601

Name John Stone House

Location Bloomfield Vicinity

Photographer Carolyn Torma

Date Taken Spring 1978

Negative Location Kentucky Heritage Council

View Detail of ceiling medallion in the east  
parlor

Photo # 9 of 12





KENTUCKY HERITAGE COUNCIL  
STATE HISTORIC PRESERVATION OFFICE  
FRANKFORT, KENTUCKY 40601

Name John Stone House

Location Bloomfield Vicinity

Photographer Carolyn Torma

Date Taken Spring 1978

Negative Location Kentucky Heritage Council

View Detail of painted ceiling in east parlor

Photo # 10 of 12





KENTUCKY HERITAGE COUNCIL  
STATE HISTORIC PRESERVATION OFFICE  
FRANKFORT, KENTUCKY 40601

Name John Stone House

Location Bloomfield Vicinity

Photographer Carolyn Torma

Date Taken Spring 1978

Negative Location Kentucky Heritage Council

View Detail of ceiling medallion in the  
central hall

Photo # 11 of 12





KENTUCKY HERITAGE COUNCIL  
STATE HISTORIC PRESERVATION OFFICE  
FRANKFORT, KENTUCKY 40601

Name John Stone House

Location Bloomfield Vicinity

Photographer Carolyn Torma

Date Taken Spring 1978

Negative Location Kentucky Heritage Council

View Detail of painted ceiling in the  
central hall

Photo # 12 of 12