



ADDITIONAL DESCRIPTION/ANALYSIS (annotated form):

Verbal boundary description: Depot and outbuildings are located in the railroad right of way bounded by Washington and Frontier Streets on the north and south, and Yavapai and Sunset Avenue on the east and west.

SIGNIFICANCE:

AREAS OF SIGNIFICANCE: COMMERCE\_\_\_ COMMUNITY PLANNING\_\_\_ ECONOMICS\_\_\_  
EXPLORATION/SETTLEMENT\_\_\_ GOVERNMENTAL\_\_\_ MILITARY\_\_\_ RELIGION\_\_\_ SCIENCE\_\_\_  
THEATRE\_\_\_ TRANSPORTATION\_\_\_ TOURISM\_\_\_ OTHER(specify) Railroad

HISTORIC ASSOCIATIONS (be concise):

PROMINENT OCCUPANT/HISTORIC ASSOCIATION(S) Direct and significant association to historic railroad influence in Wickenburg.

RELATIONSHIP TO LOCAL DEVELOPMENT Important as first depot in Wickenburg.

CULTURAL AFFILIATIONS

ARCHITECTURAL STYLE A good representative of Vernacular railroad station architecture in Arizona.

MAJOR ARCH. FORM/MATERIAL

ENGINEERING/STRUCTURAL

DISTRICT/STREETScape CONTRIBUTION

DISCUSSION AS REQUIRED:

The Santa Fe Depot, completed in 1895, has a direct association with the arrival of the railroad in Wickenburg in 1894. The railroad is directly responsible for the renewal of mining activity in the Wickenburg area which stabilized the town's economy and ensured its continued existence.

See MRA Text, Item 8, p. 16.

CONTEXT: ISOLATED/RURAL\_\_\_ RESIDENTIAL STREET\_\_\_ COMMERCIAL<sup>X</sup> CENTRAL SQUARE\_\_\_  
CBD:\_\_\_ OTHER:\_\_\_

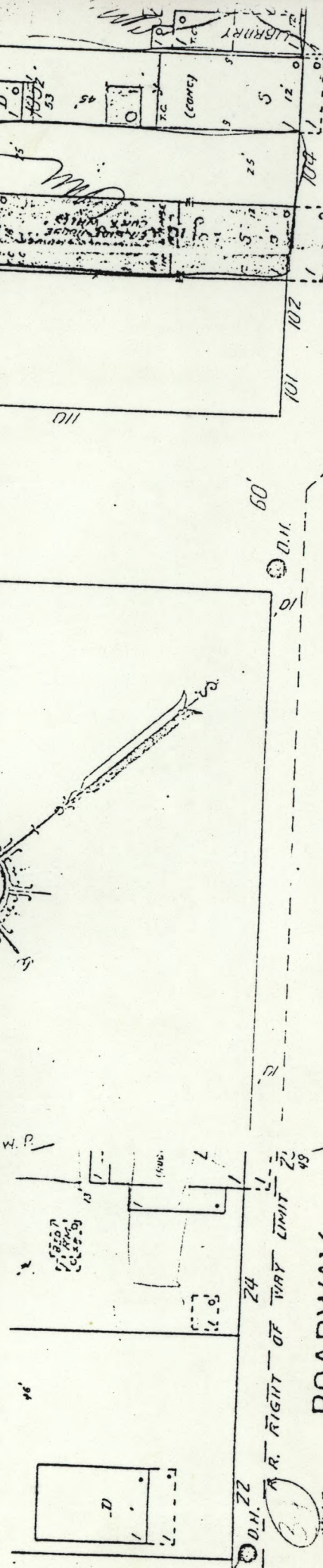
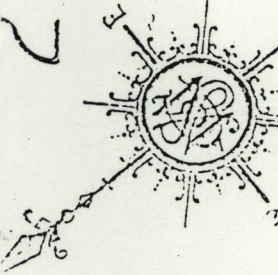
BIBLIOGRAPHY/SOURCES: 1915, 1931 Sanborn Fire Insurance Maps  
Wickenburg Sun 5/1/42  
Atchison, Topeka and Santa Fe Railway Co., Chicago, Illinois

LISTING IN OTHER SURVEYS: \_\_\_\_\_  
NATIONAL REGISTER STATUS:  
LISTED\_\_\_ DETERMINED ELIGIBLE\_\_\_ DETERMINED NOT ELIGIBLE\_\_\_ NOT EVALUATED\_\_\_

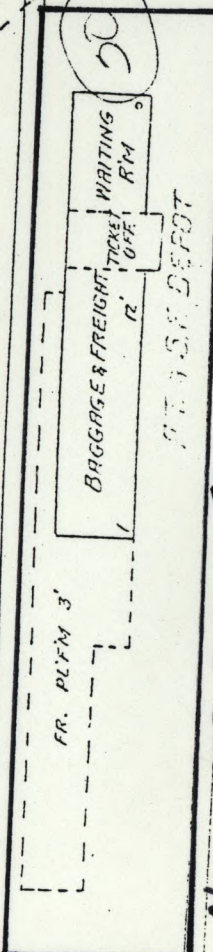
COMMENTS/DEVELOPMENT PLANS/THREATS:

SURVEYOR\_\_\_ SURVEY DATE\_\_\_ DATE FORM COMPLETED\_\_\_

# WICKENBURG, ARIZONA.

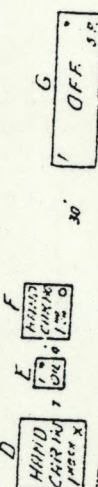


SANTA FE RAILROAD DEPOT.



NOMINATED PARCEL

R.R. RIGHT OF WAY LIMIT  
ROADWAY



STANDARD OIL CO.  
OF CAL.

