

United States Department of the Interior
National Park Service

National Register of Historic Places
Inventory—Nomination Form

PORTLAND WATERFRONT HISTORIC DISTRICT

Continuation sheet

ME

Item number

7

Page

8

For NPS use only
received NOV 21 1984
date entered 12/23/84

Owing to professional omission, I believe that three buildings should be added to the Portland Waterfront National Register Historic District. These structures lie at either end of the Commercial Street section of the district and form logical termini for this street. A revised map is included in this district amendment to indicate these proposed changes.

The following buildings are included in the amendment

Baxter- Davis Block

- A. 295-309 Commercial Street. 1902. Francis H. and Edward H. Fassett, architects. This large square five story building is constructed of brick. The principal elevation, facing east, is twenty-two bays wide and delineated by cast iron pilasters on the first two floors and brick pilasters on the upper stories. Shallow corbelling and a thin projecting cornice caps the roof line of this elevation, which is pressed brick. Between the cast iron pilasters of the first and second stories are wood frame sash with transoms. The two main entrances are distinguished by small pedimented porticos, banded brick and the company's monograph. The upper three stories have double-hung sash with two-over-two lights.

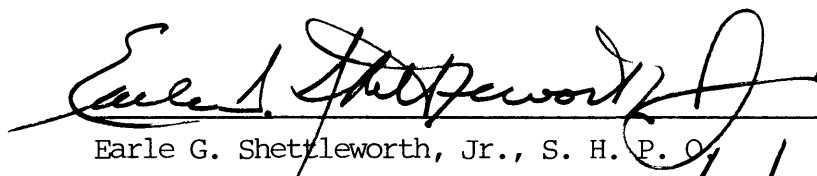
The north facade partially continues the design of the east front around the corner. The remainder of this wall is plain with double-hung sash. The south facade has six-over-six double-hung sash with segmental arched windows but is otherwise not ornamented.

Richardson Wharf Company Building

- B. 3 Center Street. 1890. Architect unknown. This small two-story rectangular building is wood frame construction with asphalt shingles. The windows consist of two-over-two double-hung sash.

Mayhew-Thomas Block

- C. 79-85 Commercial Street. 1859. Architect unknown. Constructed of brick and four stories high, this building has a hipped roof and square headed windows with granite lintels. The first story store fronts have granite piers and lintels with recessed shop fronts. A shallow corbelled cornice at the roof line is the only exterior ornamentation.


Earle G. Shettleworth, Jr., S. H. P. O.

Date

11/13/84

United States Department of the Interior
National Park Service

**National Register of Historic Places
Inventory—Nomination Form**

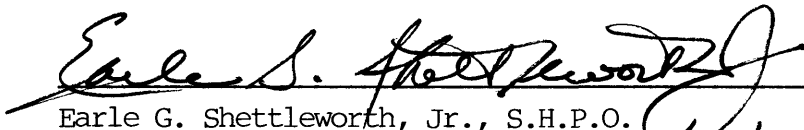
PORTLAND WATERFRONT HISTORIC DISTRICT
Continuation sheet

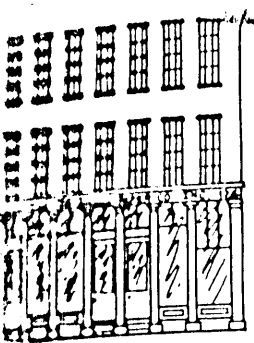
Item number 8

Page 9

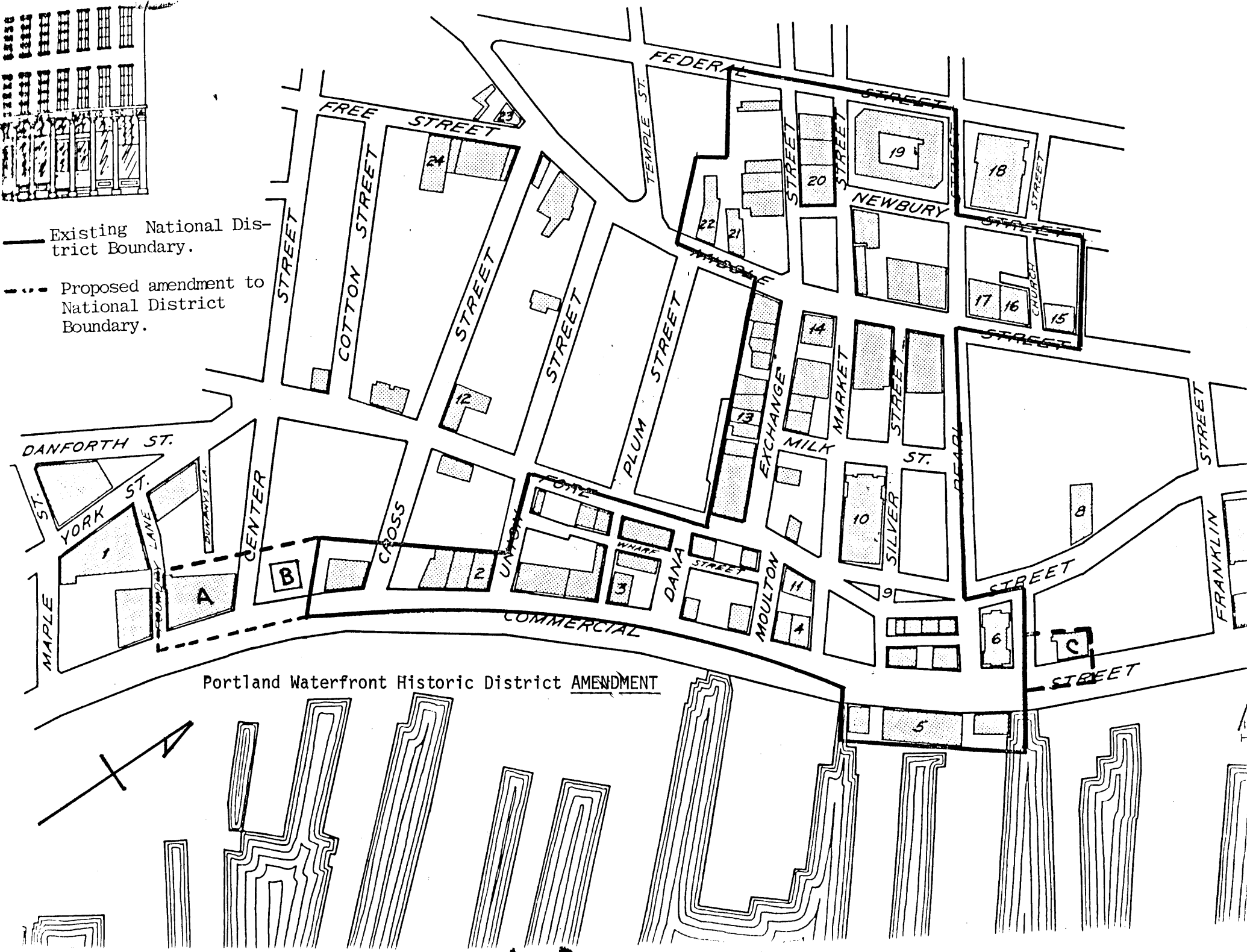
For NPS use only
received
date entered 12/23/84

The three buildings (A, B, and C) which are added to the Portland Waterfront National Register Historic District conform in style, time, place, and scale to the remainder of the district as indicated by the original statement of significance. They furthermore form natural termini for the district, there being nothing for a considerable distance on Commercial Street beyond them at either end of significance in terms of the delineation of said district.


Earle G. Shettleworth, Jr., S.H.P.O.
Date 11/13/84



- Existing National District Boundary.
- - - Proposed amendment to National District Boundary.



Portland Waterfront Historic District AMENDMENT