

Pott's Ford Bridge

Glasco, Kansas

Photos taken by Harry Jochims

Photos taken May 26, 1986

Negatives located at Kansas State Historical Soc.

North approach looking Southwest

199



Potts Ford Bridge  
Glasco, Kansas

Photos taken by Larry Jochims  
Photos taken May 26, 1986.

Negatives located at the  
Kansas State Historical Society.

Northwest side looking southeast.

2 of 9

A black and white photograph of a small, single-lane truss bridge. The bridge is constructed of dark metal beams and is supported by several vertical posts. It spans across a body of water, which is mostly obscured by dense trees and foliage. In the foreground, a concrete curb runs along the left side of the bridge's approach. A white rectangular sign with black text is mounted on a wooden post to the left of the bridge. The sign reads "WEIGHT LIMIT. 3 TONS". The background is filled with large, leafy trees under a cloudy sky.

WEIGHT  
LIMIT.  
3  
TONS

Potts Ford Bridge  
Glasco, Kansas

Photos taken by Larry Jochims  
Photos taken May 26, 1986

Negatives located at the  
Kansas State Historical Society

Southeast side looking northwest.

3 of 9





Potts Ford Bridge  
Glasco, Kansas

Photos taken by Larry Jochims  
Photos taken May 26, 1986.

Negatives located at the  
Kansas State Historical Society  
Southeast side looking northwest

4 of 9

Southeast Side looking northwest





Potts Ford Bridge  
Glasco, Kansas

Photos taken by Larry Joehims  
Photos taken May 26, 1986

Negatives located at the  
Kansas State Historical Society

Southwest approach  
looking northeast.

5 of 9



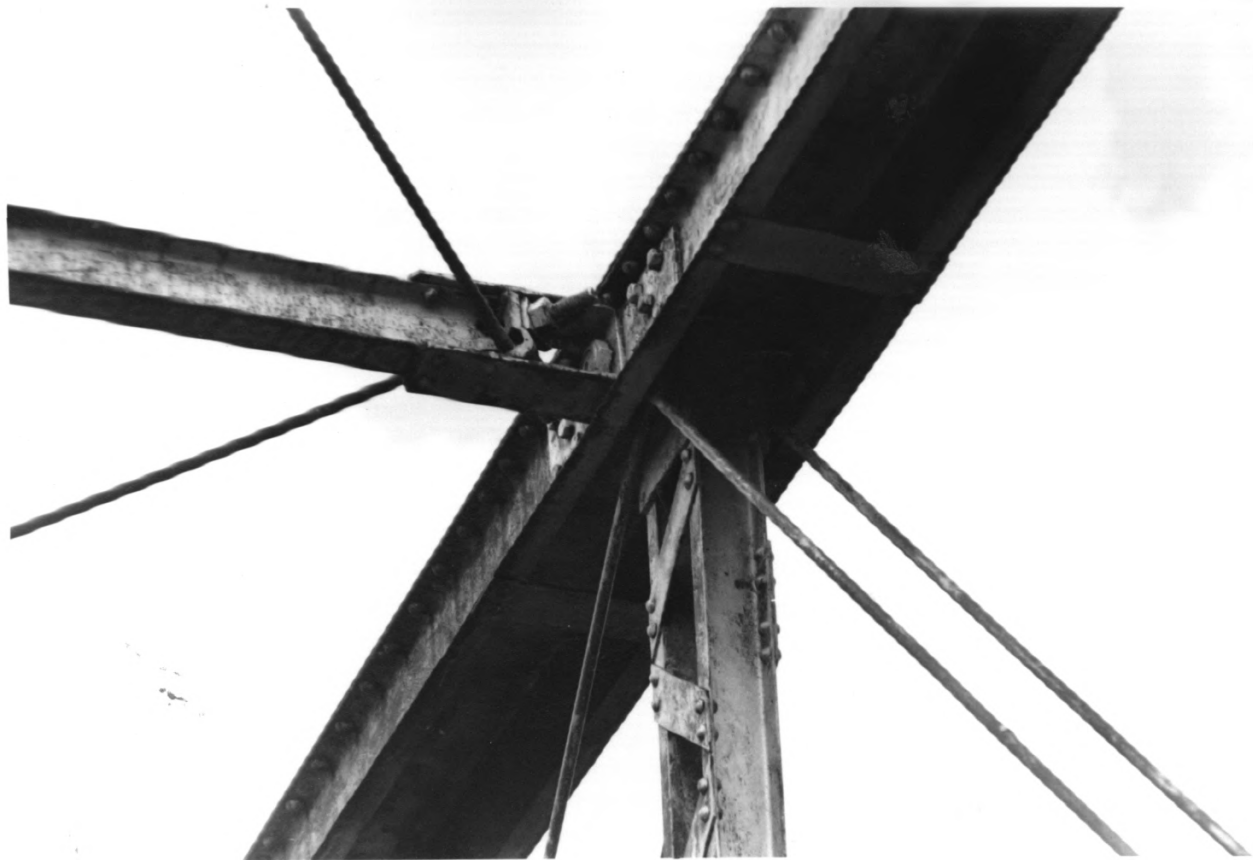
Potts Ford Bridge  
Glasco, Kansas

Photos taken by Larry Jochims  
photos taken May 26, 1986.

Negatives located at the  
Kansas State Historical Society

Builders Plaque

6 of 9



Potts Ford Bridge  
Glasco, Kansas

Photos taken by Larry Jochims  
Photos taken May 26, 1986.

Negatives located at the  
Kansas State Historical Society

Pin Connection detail  
Top chord

7 of 9

Pin Connection detail, Top chord





Potts Ford Bridge  
Glasco, Kansas

Photos taken by Larry Jochims  
Photos taken May 26, 1986.

Negatives located at the  
Kansas State Historical Society

Bottom chord connection,

8 of 9



Potts Ford Bridge  
Glasco, Kansas

Photos taken by Larry Jochims  
Photos taken May 26, 1986.

Negatives located at the  
Kansas State Historical Society

Pony truss, hip vertical  
connection,

9 of 9