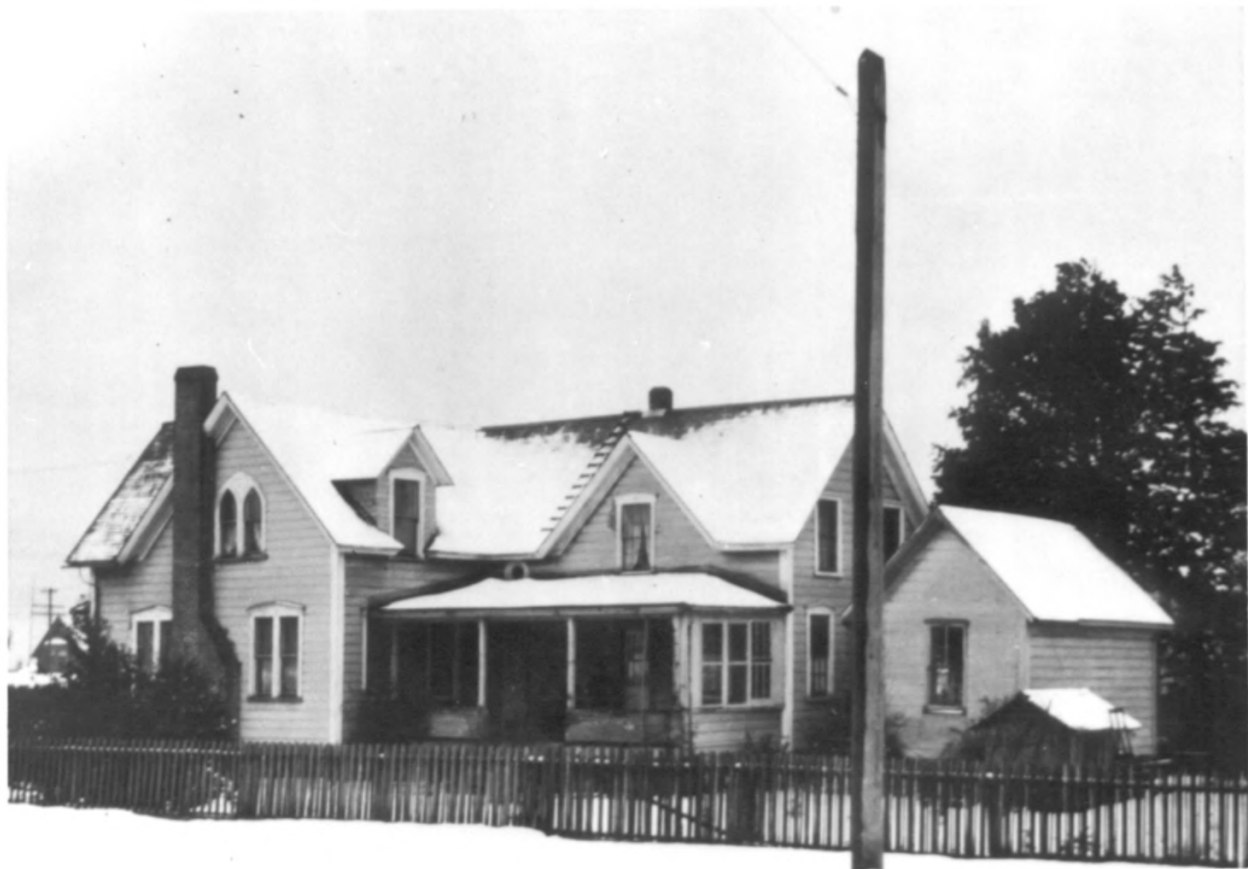




*Photo Taken Approximately 1940-1942*

Tower-Flanagan House  
476 Newmark Avenue  
Coos Bay, Coos County, Oregon  
1 of 9

Historic photo, c. 1940-42  
South (front) elevation  
Andrew Wenchel reproduction  
1475 Pine Street  
Coos Bay, Oregon 97420



*Photo Taken approximately 1940 - 1942*

Tower-Flanagan House  
476 Newmark Avenue  
Coos Bay, Coos County, Oregon  
2 of 9

Historic photo, c. 1940-42  
East Elevation  
Andrew Wenchel reproduction  
1475 Pine Street  
Coos Bay, Oregon 97420



Tower-Flanagan House

476 Newmark Avenue

Coos Bay, Coos County, Oregon

3 of 9

South (front) elevation, 1981

Margherita Krall photo

410 Commercial

Coos Bay, Oregon



Tower-Flanagan House

476 Newmark Avenue

Coos Bay, Coos County, Oregon

4 of 9

View from the northeast, 1981

Margherita Krall photo

410 Commercial

Coos Bay, Oregon 97420





Tower-Flanagan House

476 Newmark Avenue

Coos Bay, Coos County, Oregon

5 of 9

View from the east, 1981

Garage on left, carriage house on right

Margherita Krall photo

410 Commercial,  
Coos Bay, Oregon 97420



Tower-Flanagan House  
476 Newmark Avenue  
Coos Bay, Coos County, Oregon  
6 of 9

Interior view, looking south, 1981  
Margherita Krall photo  
410 Commercial  
Coos Bay, Oregon 97420



Tower-Flanagan House  
476 Newmark Avenue  
Coos Bay, Coos County, Oregon  
7 of 9

Kitchen, looking west, 1981  
Margherita Krall photo  
410 Commercial  
Coos Bay, Oregon 97420



Tower-Flanagan House

476 Newmark Avenue

Coos Bay, Coos County, Oregon

8 of 9

Parlor looking toward dining room

Margherita Krall photo, 1981

410 Commercial

Coos Bay, Oregon 97420





Tower-Flanagan House  
476 Newmark Avenue  
Coos Bay, Coos County, Oregon  
9 of 9

Stairhall  
Margherita Krall photo, 1981  
410 Commercial  
Coos Bay, Oregon 97420