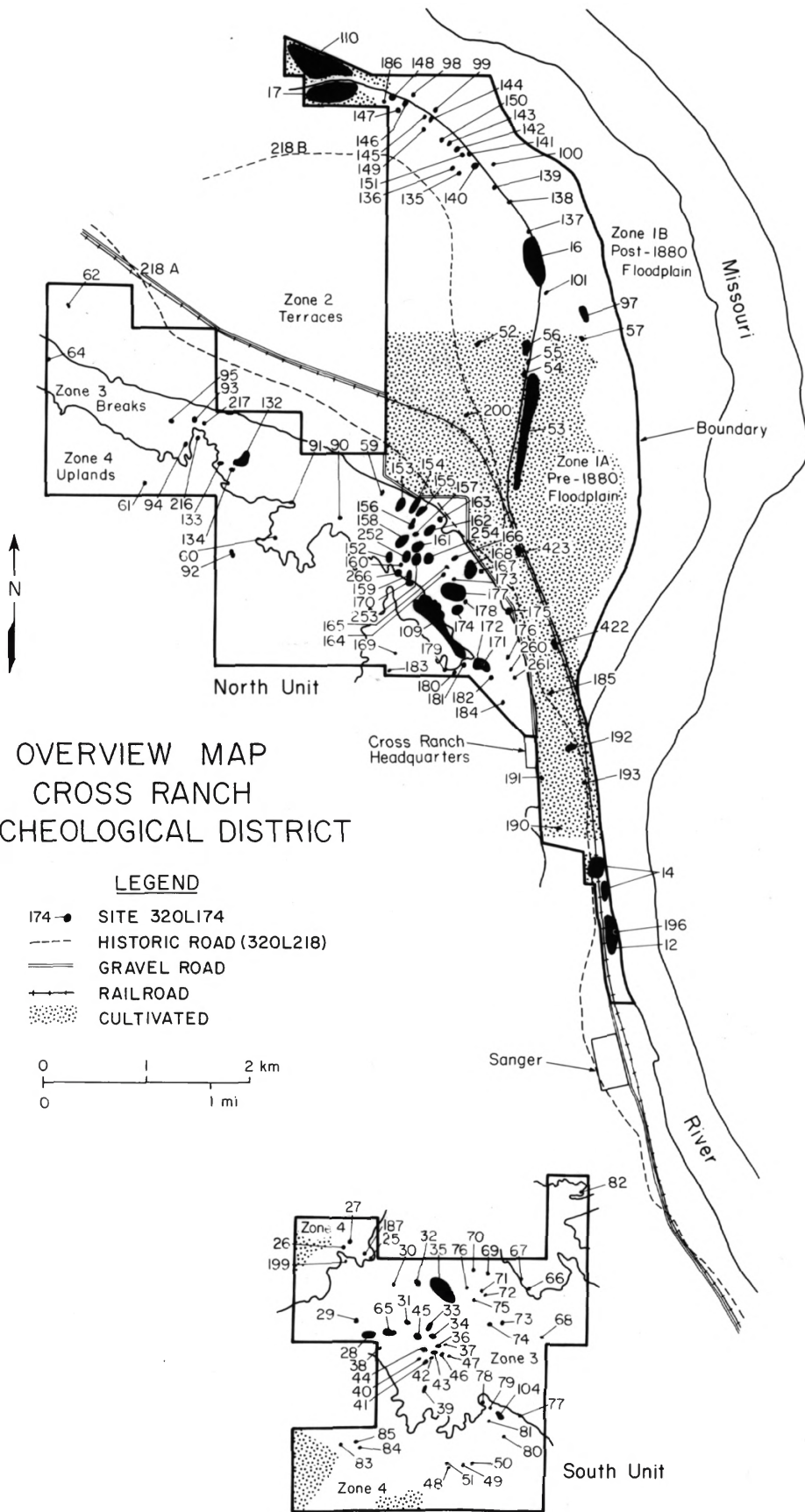
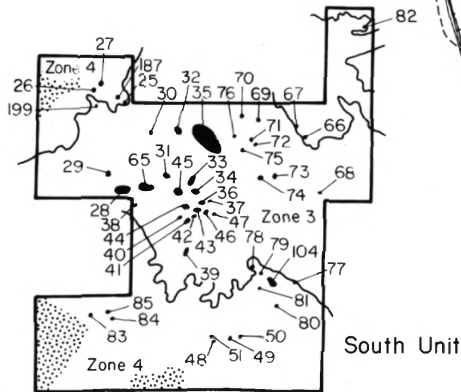
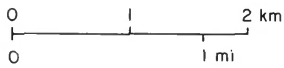


OVERVIEW MAP CROSS RANCH ARCHEOLOGICAL DISTRICT

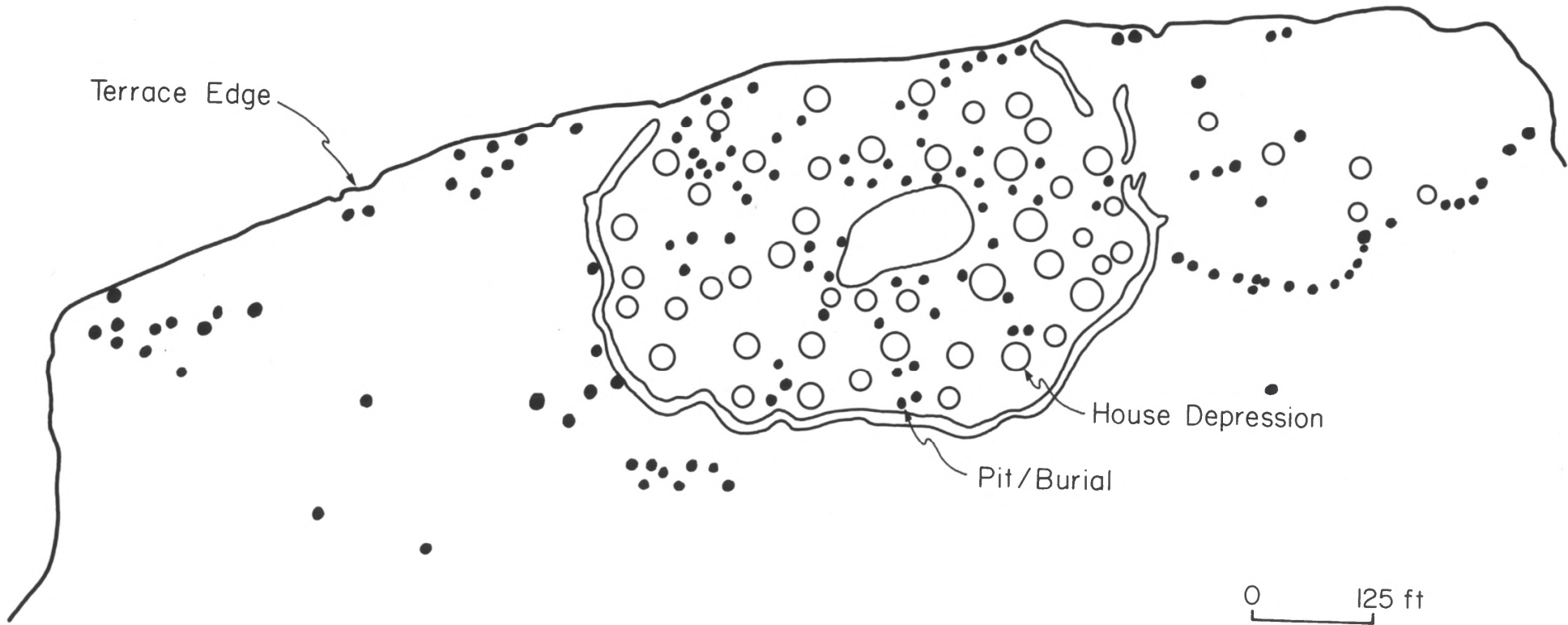


LEGEND

- 174 • SITE 320L174
- HISTORIC ROAD (320L218)
- GRAVEL ROAD
- +— RAILROAD
- CULTIVATED

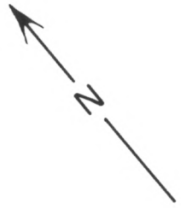
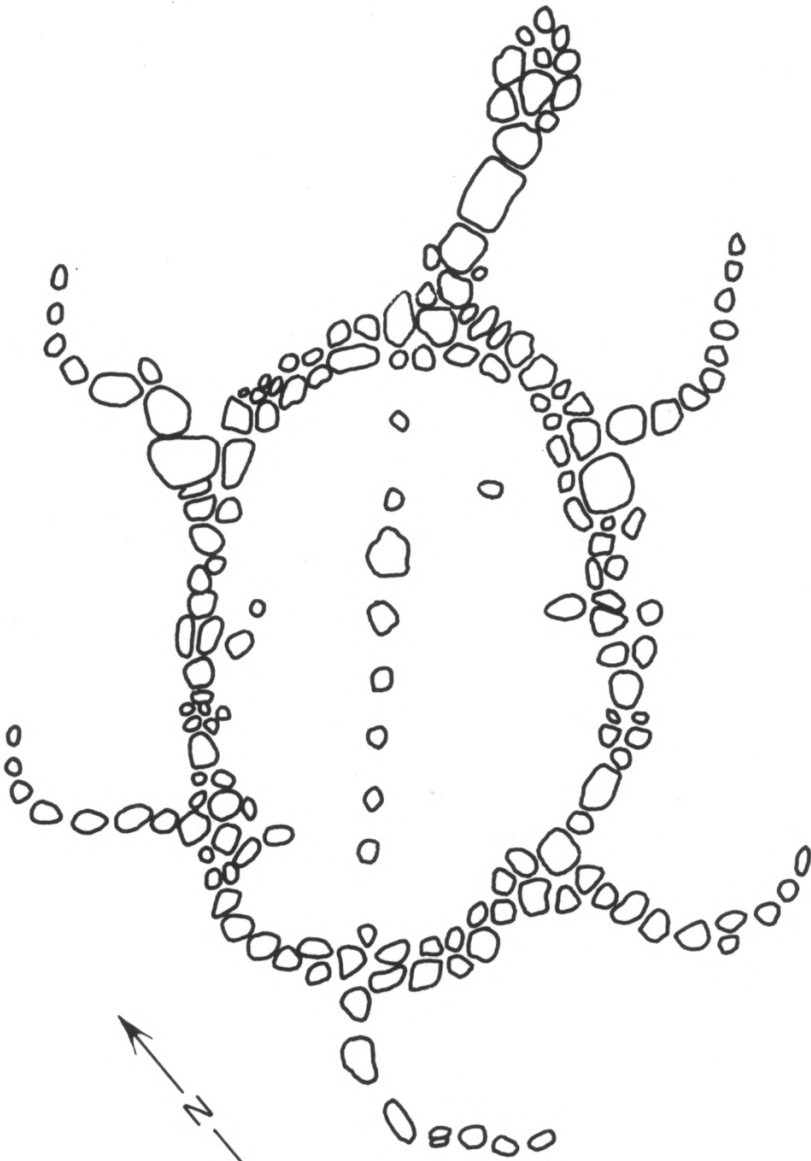


GREENSHIELD VILLAGE (320L17)



Greenshield Village (320L17)
Cross Ranch Archeological District
Hensler, North Dakota

Map of Greenshield Village showing the fortification ditch, house depressions, and other features. Adapted from a map produced by Alfred W. Bowers in 1929.



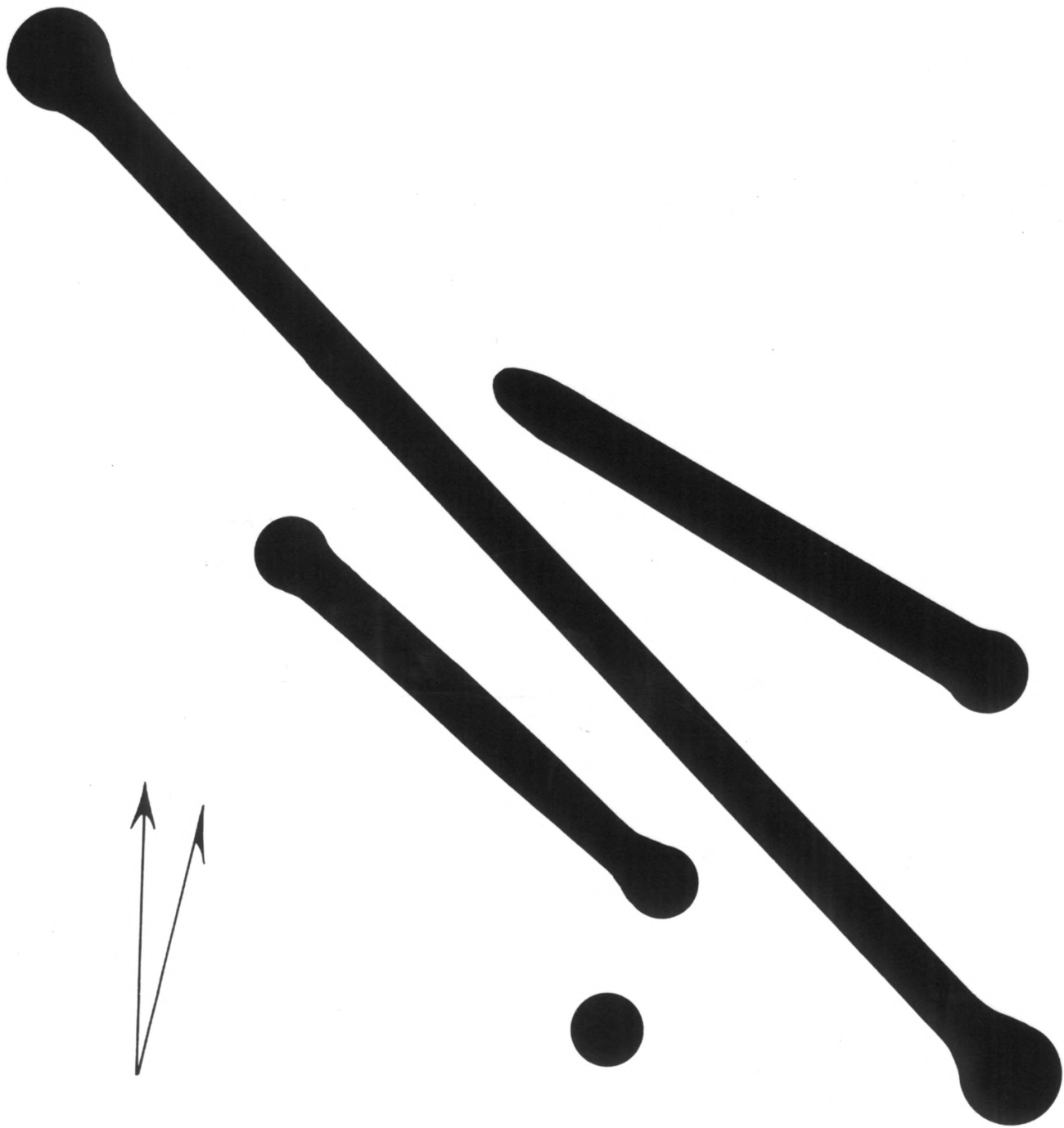
0 1 2 3 ft

South Unit

Cross Ranch Archeological District

Hensler, North Dakota

Turtle effigy found in 1909 in what was later the south unit of the Cross Ranch Archeological District. It was removed and reconstructed on the Statehouse lawn in Bismarck. After Stout (1910).



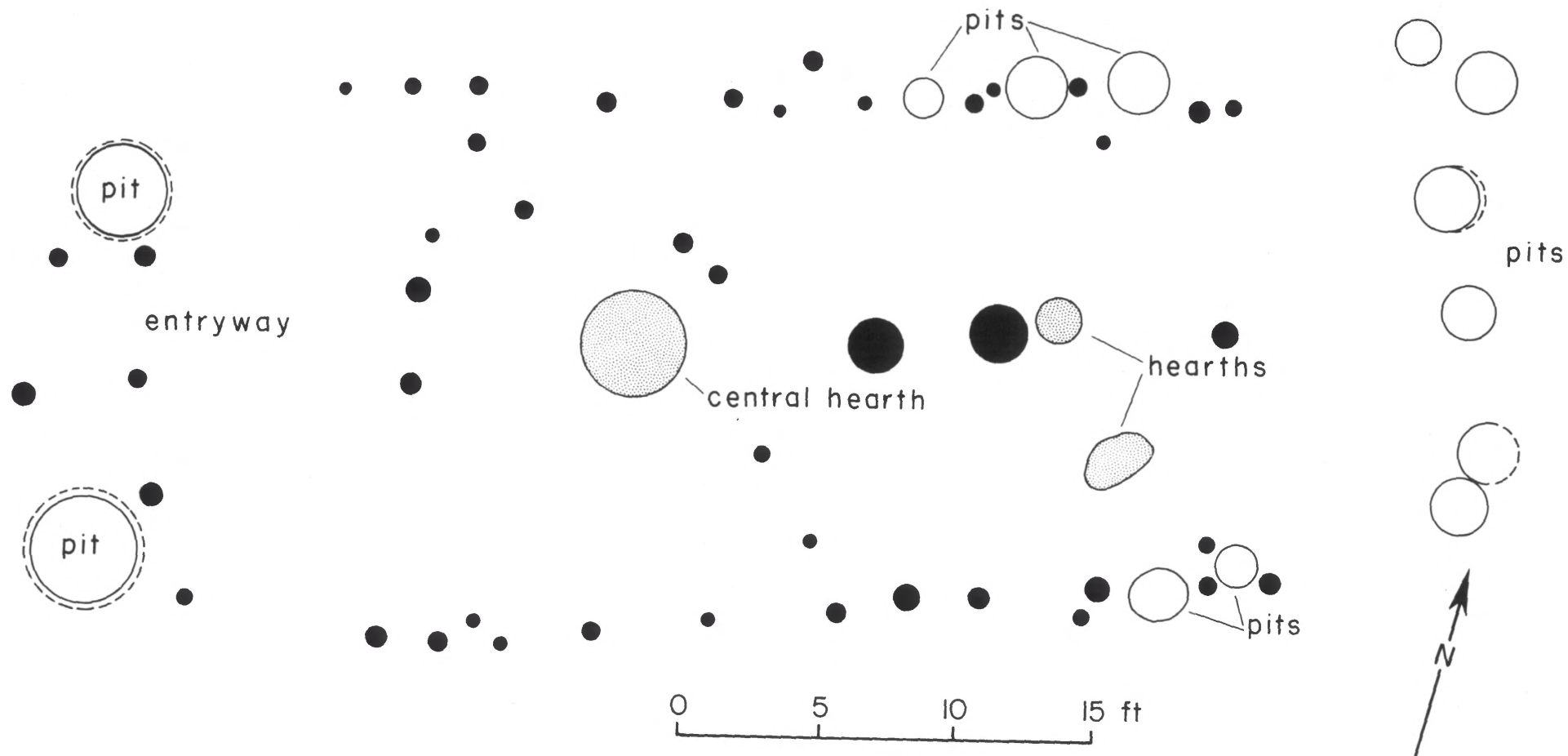
Levis Mound Group

Levis Mound Group (320L14)

Cross Ranch Archeological District

Hensler, North Dakota

The Levis Mound Group in the north unit of the district, investigated by D. J. Lehmer and F. A. Calabrese in 1970.



Cross Ranch Village (320L14)
Cross Ranch Archeological District
Hensler, North Dakota

Plan of rectangular-shaped House 7 excavated
at Cross Ranch Village in 1969. After
Calabrese (1972:Fig. 4).



Treat (320L72) & Ritterbush (320L73)
Cross Ranch Archeological District
Hensler, North Dakota

D. E. Griffin

21 June 1979

Department of Anthropology, University
of North Dakota, Grand Forks

View is South-Southeast

Photo No. 1-27

Typical view of wooded draws in the
breaks zone of the south unit of the
district.

The Treat site (320L72), a stone ring
site, is at the center of the photo
with survey crew members.

The Ritterbush site (320L73), a general
debris scatter, is in the background
near the trees.



Sanger Mound Group (320L104)
Cross Ranch Archeological District
Hensler, North Dakota
D. E. Griffin
27 June 1979
Department of Anthropology, University
of North Dakota, Grand Forks
View is East
Photo No. 2-35

View of the Missouri River valley from the uplands zone in the south unit of the district.

The pin flags (foreground) mark mounds in the Sanger Mound Group (320L104), which is situated at the edge of the uplands zone overlooking the breaks zone and the river bottoms.



Harvey (320L166)

Cross Ranch Archeological District

Hensler, North Dakota

D. E. Griffin

31 July 1979

Department of Anthropology, University
of North Dakota, Grand Forks

View is East

Photo No. 7-6

View of the Missouri River bottoms (terrace and floodplain zones) from the breaks zone in the north unit of the district. The Harvey site (320L166), a lithic scatter, is located on the slight rise with the survey crew member (near center) in the breaks zone overlooking the river bottoms.



Hat (320L177) & Levis Mound Group (320L109)
Cross Ranch Archeological District
Hensler, North Dakota
D. E. Griffin
3 August 1979
Department of Anthropology, University
of North Dakota, Grand Forks
View is Northwest
Photo No. 8-30

Typical view of the breaks zone and wooded draws in the north unit of the district. The Hat site (320L177), a campsite or occupation, is located on the sloping bench area (center). The Levis Mound Group (320L109), is situated at the edge of the uplands zone above the breaks near the van (upper left).



Hidden Rock (320L180)
Cross Ranch Archeological District
Hensler, North Dakota
D. E. Griffin
6 August 1979
Department of Anthropology, University
of North Dakota, Grand Forks
View is Southeast
Photo No. 8-36

View of the Missouri River valley from the edge of the uplands zone in the north unit of the district.

Buildings are the Cross Ranch Nature Preserve Headquarters.

The Hidden Rock site (320L180), a rock cairn, is located at the edge of the uplands zone (foreground).



Bagnell Village (320L16)
Cross Ranch Archeological District
Hensler, North Dakota
D. E. Griffin
18 August 1979
Department of Anthropology, University
of North Dakota, Grand Forks
View is South
Photo No. 9-4

View of the Bagnell Village (320L16)
site area at the edge of the terrace
zone overlooking the floodplain zone
(heavy trees).



Windy Ridge (320L35)
Cross Ranch Archeological District
Hensler, North Dakota
D. E. Griffin
12 August 1979
Department of Anthropology, University
of North Dakota, Grand Forks
View is North
Photo No. 9-16

Overview of the breaks zone in the south
unit of the district from the Windy
Ridge site (320L35), a stone ring site.
Note the stone ring visible in the
foreground.



Bundlemaker (320L159), Legacy (320L252)
& Stoney (320L161)

Cross Ranch Archeological District

Hensler, North Dakota

C. H. Lee

6 June 1980

Department of Anthropology, University
of North Dakota, Grand Forks

View is South

Photo No. 10-7

View of a wooded draw setting in the breaks zone in the north unit of the district. Bundlemaker (320L159), a bison kill and processing station, is located in the wooded draw.

Legacy (320L252), a campsite or occupation, is on the low slope (center).

Stoney (320L161), a campsite or occupation, is in the foreground.

320L159
UNIT 4
LEV 5



Bundlemaker (320L159)
Cross Ranch Archeological District
Hensler, North Dakota
C. H. Lee
9 July 1980
Department of Anthropology, University
of North Dakota, Grand Forks
View is East
Photo No. 13-15

Excavation view of the bison bone bed at Bundlemaker (320L159), a bison kill and processing station located in a wooded draw in the breaks zone in the north unit of the district.



320L148
U12.15 F3
7 14 82

PG (320L148)

Cross Ranch Archeological District

Hensler, North Dakota

S. A. Ahler

14 July 1982

Department of Anthropology, University
of North Dakota, Grand Forks

View is South

Photo No. 24-5

Excavation view of occupation surface and
bone debris at the PG site (320L148),
a campsite or occupation in the terrace
zone in the north unit of the district.



Angus (320L144)

Cross Ranch Archeological District

Hensler, North Dakota

S. A. Ahler

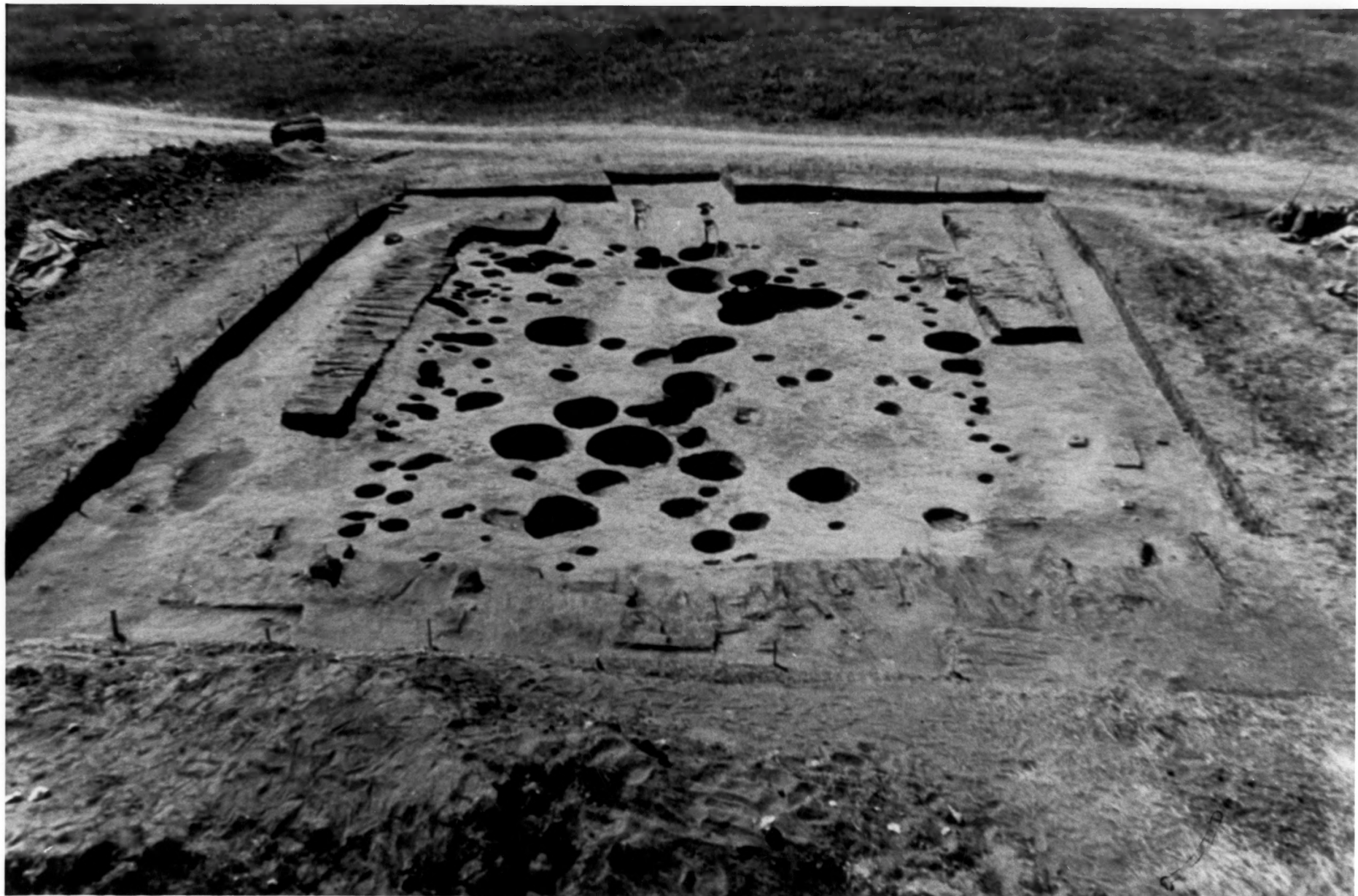
20 July 1982

Department of Anthropology, University
of North Dakota, Grand Forks

View is Northeast

Photo No. 24-24

View of the Angus site (320L144), a
campsite or occupation, during excavation.
The site is located at the edge of the
terrace zone overlooking the floodplain
zone in the north unit of the district



Bagnell Village (320L16)
Cross Ranch Archeological District
Hensler, North Dakota
D. J. Lehmer
July 1971
Department of Anthropology, University
of North Dakota, Grand Forks
View is Southwest
Photo No. 912

View of House 3, an earthlodge floor,
after excavation at Bagnell Village
(320L16). The village is in the terrace
zone overlooking the floodplain zone
in the north unit of the district.