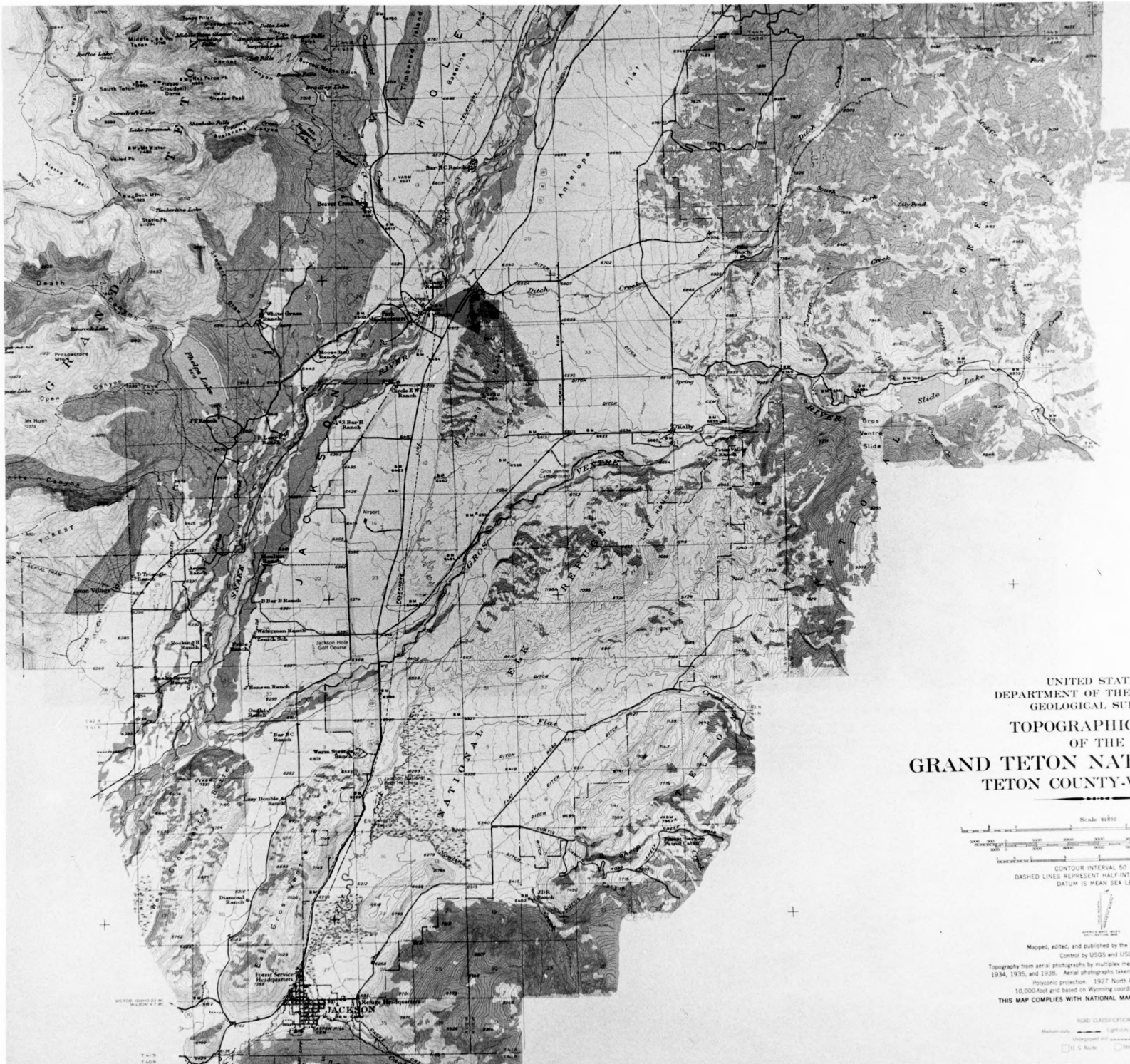


NPS Number 69-04-49-0012

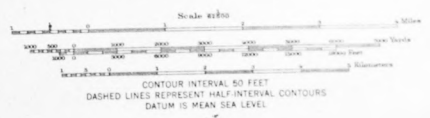
Title: MENOR'S FERRY


Loc. TETON COUNTY, WYOMING

Menor's Ferry - Grand Teton  
National Park, Wyoming.



UNITED STATES  
 DEPARTMENT OF THE INTERIOR  
 GEOLOGICAL SURVEY  
 TOPOGRAPHIC MAP  
 OF THE  
**GRAND TETON NATIONAL PARK**  
 TETON COUNTY-WYOMING



  
 Mapped, edited, and published by the Geological Survey  
 Control by USGS and USCGS  
 Topography from aerial photographs by multiple methods and by plane-table surveys  
 1934, 1935, and 1938. Aerial photographs taken July 1948. Field check 1948  
 Polyconic projection. 1927 North American Datum  
 10,000-foot grid based on Wyoming coordinate system, west zone  
**THIS MAP COMPLIES WITH NATIONAL MAP ACCURACY STANDARDS**

