



United Brick Corporation Brick Complex
Washington D.C.

1. Formerly United Clay Products Co. ('Brickyard'). View towards Kilns,
showing concrete apron and stacks, looking east.

District of Columbia

Photographer: Roberta A. Douglas

August 19, 1976

Plant Records Office, National Arboretum

Photograph # 1 of 10

DOE
OCT 3 1978

AUG 29 1977



United Brick Corporation Brick Complex
Washington D.C.

2. Formerly United Clay Products Co. ('Brickyard'). View of guard house, slate roof, looking southwest.

District of Columbia

Photographer: Roberta A. Douglas

August 19, 1976

Plant Records Office, National Arboretum

Photograph # 2 of 10

AUG 29 1977

DOE
OCT 3 1978

U
N
I
T
E
D



United Brick Corporation Brick Complex
Washington D.C.

3. Formerly United Clay Products Co. (Brickyard). View withing kiln area, showing slab and tracks and kiln with steel banding, looking southeast.

3 of 10

District of Columbia

Photographer: Roberta A. Douglas

August 19, 1976

Plant Records Office, National Arboretum

Photograph # 3910

AUG 29 1977

DOE
OCT 3 1978



United Brick Corporation Brick Complex
Washington D.C.

4. Formerly United Clay Products Co. ('Brickyard'). View of a building not related to brick making; built in 1942 to fill acetylene cylinders. Photograph is taken looking west.

District of Columbia

Photographer: Roberta A. Douglas

August 19, 1976

Plant Records Office, National Arboretum

Photograph # 4 *110*

POE AUG 29 1977
OCT 3 1978



United Brick Corporation Brick Complex
Washington D.C.

5. Formerly United Clay Products Co. ('Brickyard'). View of the building used to make bricks showing corrugated roofed entry for trains. Photograph is taken looking north.

District of Columbia

Photographer: Roberta A. Douglas

August 19, 1976

Plant Records Office, National Arboretum

Photograph # 54/10

AUG 29 1977

DOE
OCT 3 1978



United Brick Corporation Brick Complex
Washington D.C.

6. Formerly United Clay Products Co. ('Brickyard'). View of old shower-locker room building with Flemish bond design, looking northeast.

District of Columbia

Photographer: Roberta A. Douglas

August 19, 1976

Plant Records Office, National Arboretum

Photograph # 6 *810*

AUG 29 1977

DOE
OCT 3 1978



United Brick Corporation Brick Complex

7. Formerly United Clay Products Co. ('Brickyard'). Close-up of kiln showing entry way, steel banding, and disintegrating roof shell, looking southeast.

District of Columbia

Photographer: Roberta A. Douglas

August 19, 1976

Plant Records Office, National Arboretum

Photograph # *7 of 10*

Washington DC

AUG 29 1977

DOE
OCT 3 1978



United Brick Corporation Brick Complex

8. Formerly United Clay Products Co. ('Brickyard'). View of old oil storage tank room and main stack; extremely bad kiln at left, looking north.

District of Columbia

Photographer: Roberta A. Douglas

August 19, 1976

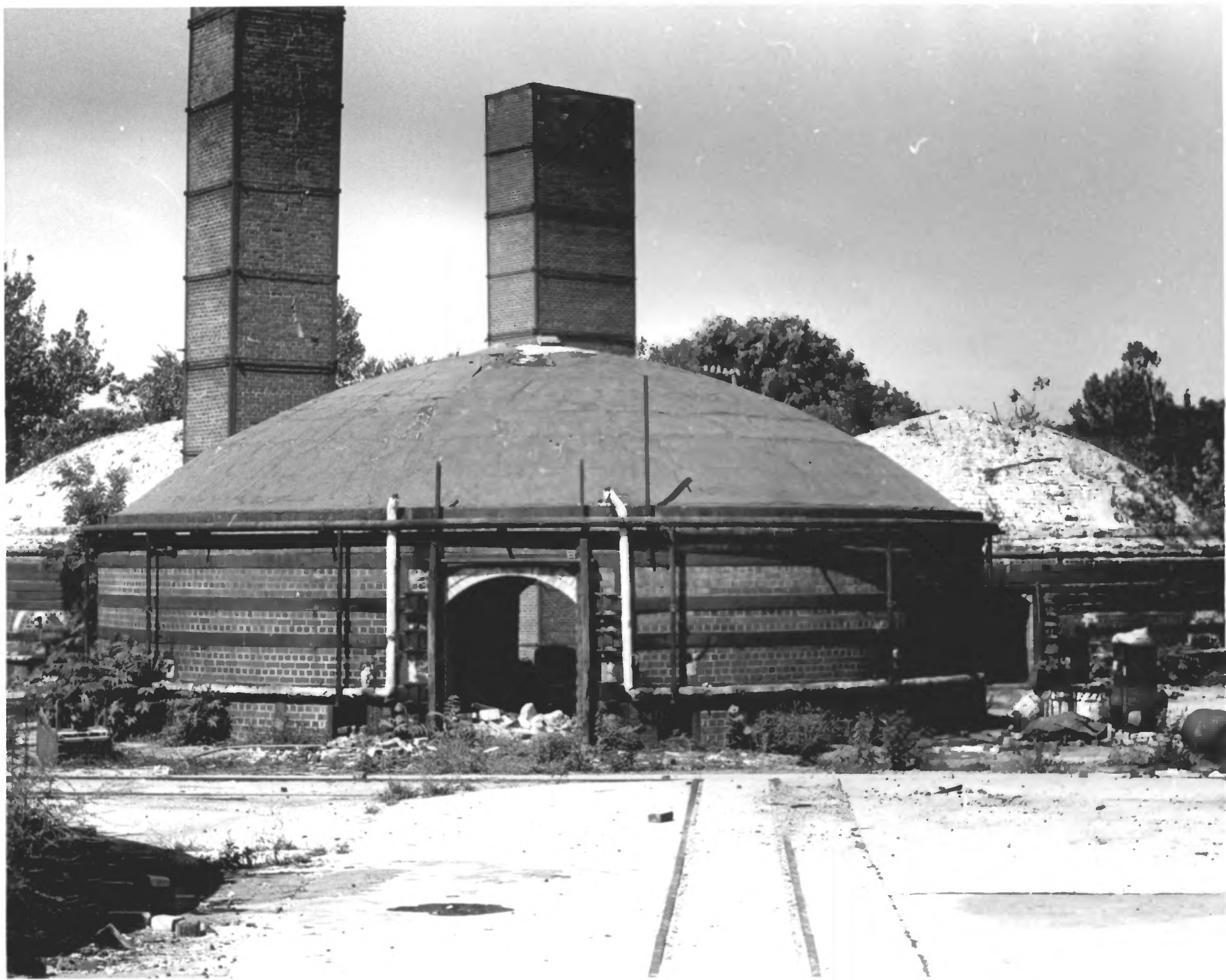
Plant Records Office, National Arboretum

Photograph # 8 ^{9/10}

^{DOE}
OCT 3 1978

Washington DC

AUG 29 1977



United Brick Corporation Brick Complex
Washington D.C.

9. Formerly United Clay Products Co. ('Brickyard'). View of most recently constructed kiln backed by stacks and two kilns in poor condition.

View looking west.

District of Columbia

Photographer: Roberta A. Douglas

August 19, 1976

Plant Records Office, National Arboretum *DOE*

Photograph # 9 *of 10*

OCT 3 1978

AUG 29 1977



United Brick Corporation Brick Complex

10. Formerly United Clay Products Co. ('Brickyard'). View of typical entrance to the brick kilns. View looking west. Note weeds growing on the surface of dome.

District of Columbia

Photographer: Roberta A. Douglas

August 19, 1976

Plant Records Office, National Arboretum

Photograph # 10 *9/10*

DrE
OCT 3 1978

AUG 29 1977