



WESLEYAN AVENUE HISTORIC HISTRICT
PROVIDENCE, RHODE ISLAND

Photographer: Leslie J. Vollmert

Date: July 1978

Negative: Rhode Island Historical Preservation
Commission

George H. Busiel House, 596 Broad Street

No 1



WESLEYAN AVENUE HISTORIC DISTRICT
PROVIDENCE, RHODE ISLAND

Photographer: Leslie J. Vollmert

Date: March 1978

Negative: Rhode Island Historical Preservation
Commission

38-40 Taylor Street; Francis F. Leckie House,
44 Taylor Street

No 2



WESLEYAN AVENUE HISTORIC DISTRICT
PROVIDENCE, RHODE ISLAND

Photographer: Leslie J. Vollmert

Date: March 1978

Negative: Rhode Island Historical Preservation
Commission

Eugene M. Sawin House, 15 Wesleyan Avenue

Nº 3



WESLEYAN AVENUE HISTORIC DISTRICT
PROVIDENCE, RHODE ISLAND

Photographer: Leslie J. Vollmert

Date
Date: July 1978

Negative: Rhode Island Historical Preservation
Commission

Wesleyan Avenue, north side, view to the east
showing Augustine H. Downing House,
25 Wesleyan Avenue; Walter F. Slade
House, 21 Wesleyan Avenue; and
Eugene M. Sawin House, 15 Wesleyan
Avenue

No 4



WESLEYAN AVENUE HISTORIC DISTRICT
PROVIDENCE, RHODE ISLAND

Photographer: Leslie J. Völmert

Date: March 1978

Negative: Rhode Island Historical Preservation
Commission

Eva S. Dean House, 24 Wesleyan Avenue

№5



WESLEYAN AVENUE HISTORIC DISTRICT
PROVIDENCE, RHODE ISLAND

Photographer: Leslie J. Vollmert

Date: March 1978

Negative: Rhode Island Historical Preservation
Commission

Amasa C. Tourtellot House, 32 Wesleyan Avenue

No 6



WESLEYAN AVENUE HISTORIC DISTRICT
PROVIDENCE, RHODE ISLAND

Photographer: Leslie J. Vollmert

Date: March 1978

Negative: Rhode Island Historical Preservation
Commission

Herbert W. Greene House, 40-42 Wesleyan Avenue

No 7



WESLEYAN AVENUE HISTORIC DISTRICT
PROVIDENCE, RHODE ISLAND

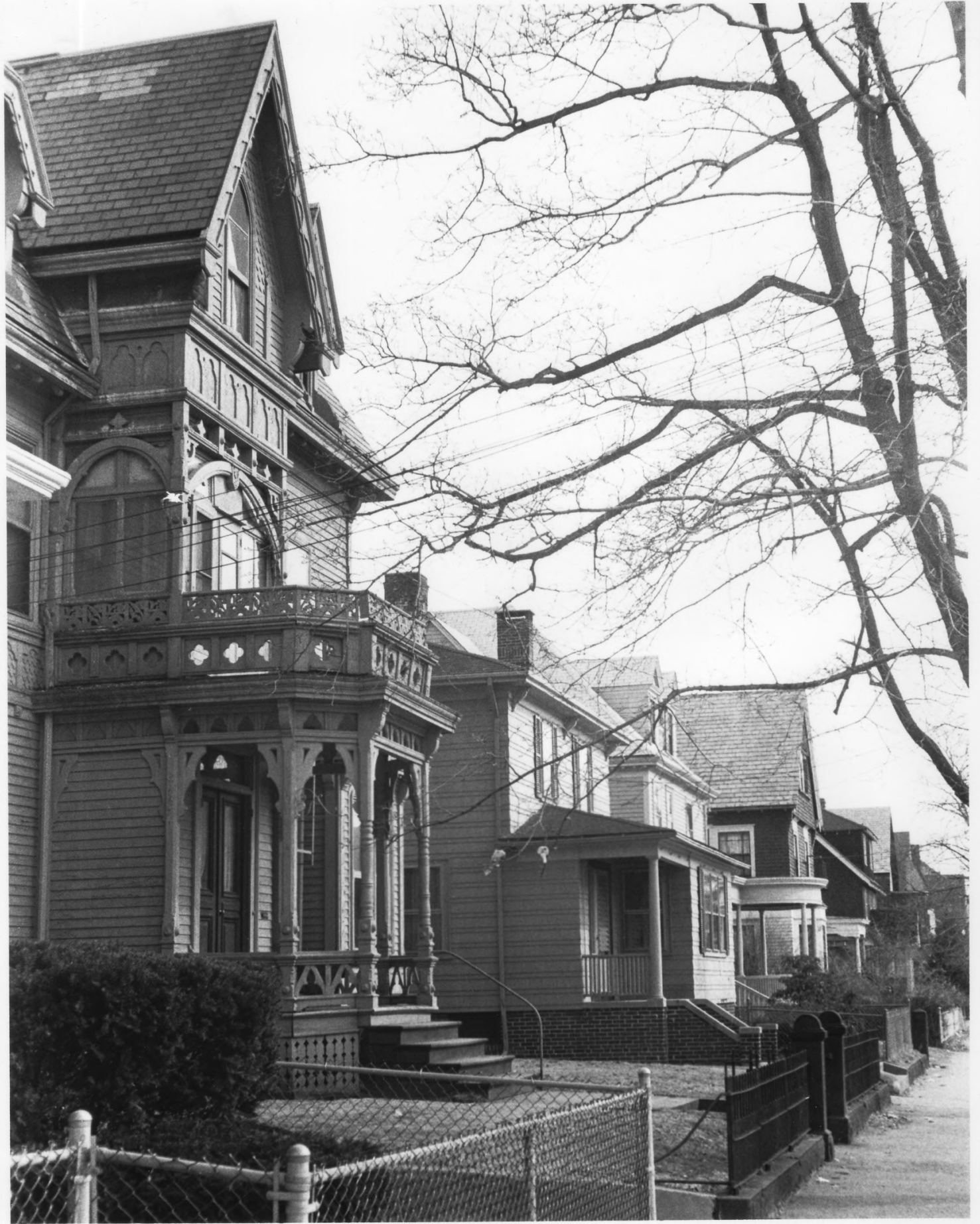
Photographer: Leslie J. Vollmert

Date: March 1978

Negative: Rhode Island Historical Preservation
Commission

Phebe W. Gardiner House, 43 Wesleyan Avenue

No 8



WESLEYAN AVENUE HISTORIC DISTRICT
PROVIDENCE, RHODE ISLAND

Photographer: Leslie J. Vollmert

Date: March 1978

Negative: Rhode Island Historical Preservation
Commission

Wesleyan Avenue, north side, view to the east
with Samuel B. Darling House, 53
Wesleyan Avenue, in foreground

No 9



WESLEYAN AVENUE HISTORIC DISTRICT
PROVIDENCE, RHODE ISLAND

Photographer: Leslie J. Vollmert

Date: February 1978

Negative: Rhode Island Historical Preservation
Commission

Samuel B. Darling House, 53 Wesleyan Avenue

No 10